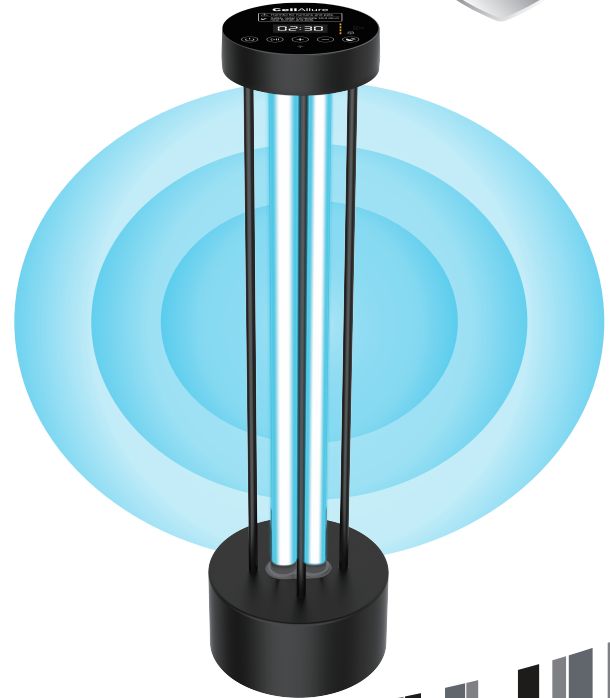


# CellAllure<sup>®</sup>

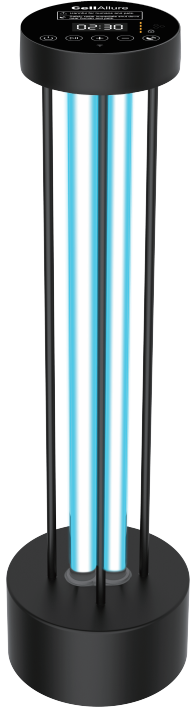
## SMART UV LAMP User Manual

Control From Anywhere



## Contents

Thank you for using this product.....	01
Smart UV lamp - giving you sun-like comfort.....	01
Touch button control panel.....	02
Description of the colorful lights.....	03
Radar intelligent human induction ensure safety.....	03
Wi-Fi smart network module.....	04
Many time levels freely adjustable.....	04
Radar detection range.....	05
Register and log in.....	06
Network paring.....	06
Tuya app control.....	07
Replace the lamp tube.....	07



## Thank you for using this product!

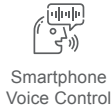
In order to enable you to use this product correctly and give full play to the effectiveness of the product, please read this manual carefully before using and fully understanding the relevant matters, especially the parts marked "Warning" "Caution" in boldface. While using it, please correctly understand the performance of this product and strictly follow the operating procedures.

This user manual is revised and released by CellAllure. CellAllure retains the right to modify and edit this manual at any time.

## Smart UV lamp - giving you sun-like comfort

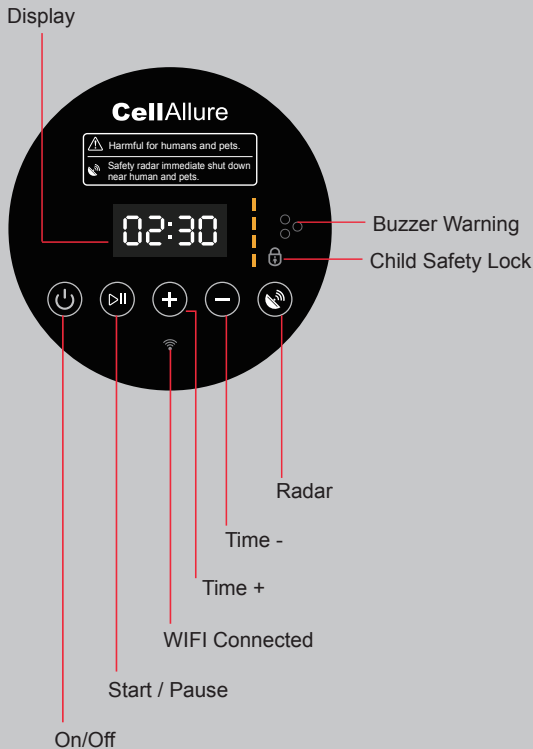
Professional testing strength kills mites and sterilizes  
creating a comfortable and pure environment for you





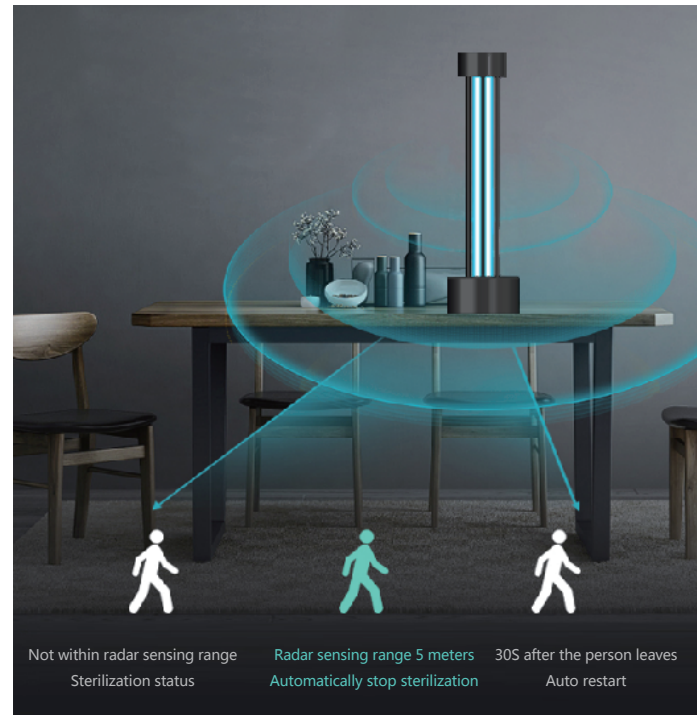
## Touch button control panel

1. Power button: Touch once to turn on, the colorful indicator lights up in blue, touch again to turn off, and cycle in turn.
2. Start/Pause button: Touch once to start the sterilization , touch again to pause the sterilization; When the machine is on, press the +, - keys to set the timing.
3. "-" button: The default is 60 minutes, Press "-" for 30 minutes; Press "-" to set the time for 15 minutes; Then press "-" to time for 1 minute, Then press "-" for 120 minutes and cycle.
4. "+" button: The default is 60 minutes, Press "+" for 90 minutes; Press "+" again to set 120 minutes; Press "+" again to set time for 1 minute; Then press "+", timing 15 minutes, cycle. Long press "+" key, press minute to increase; Long press "-" key, press minutes to decrease.
5. Radar button: Touch once to increase one level of the radar sensing range. And cycle from level 1 to level 4, the level corresponding to the indicator lights' numbers, such as the indicator lights up one orange light corresponding to the level 1, and then cycles in turn.



## Description of the colorful lights

1. Power on the equipment
  - 1) If there is no distribution network, turn on the power supply, the color light of the equipment will be on for 1s, and then the blue light will flash slowly.
  - 2) If the distribution network has been connected, the color lights of the power supply equipment will be on for 1s, and all lights will not be on.
2. Turn on the power and press the power key to enter the standby mode. No matter whether the equipment is distributed network or not, the green breath is on, and after 1 minute, the blue light is always on.
3. Sterilization mode:
  - 1) When entering the sterilization mode normally, all lights are not on
  - 2) In the process of sterilization, if the radar detects a living body, the red light will flash to remind you to leave, and the orange light will flash when the sterilization starts; When detect some people or animal is close to the radar area, the red light will flash quickly to remind to leave; When finish the sterilization, the colorful lights automatically switch to the same mode when power is on.



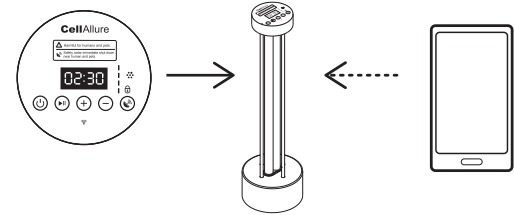
## Radar intelligent human induction ensure safety

Radar sensing distance: 1-7 meters (radar sensing is affected by the environment, the range will be slightly deviated), if detect any movements of a moving object within the radar sensing range, the lamp will automatically stop working.

## Wi-Fi smart network module

The product adapt to different product forms  
Stable communication: global stable operation  
Good performance: strong chips support data operation  
Ultra-low power consumption: smoother product use

Control from anywhere

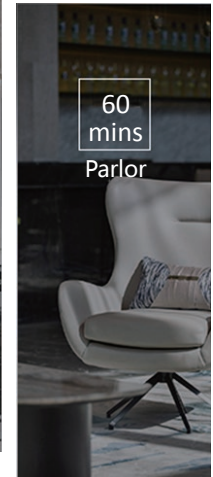
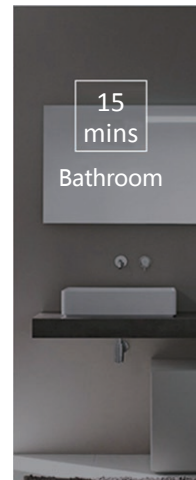
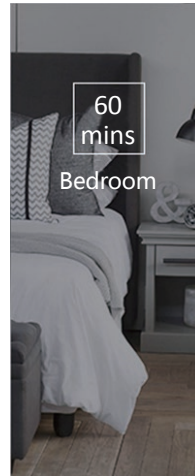


Smart display Control

Wi-Fi Smart network control

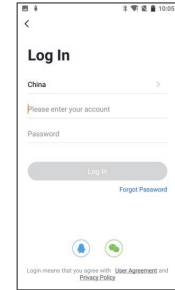
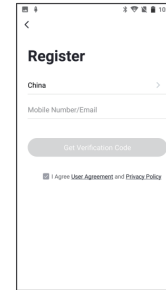
## Many time levels freely adjustable

Choose the appropriate sterilization time according to different regional occasions to achieve sterilization  
After setting the sterilization time, the lights will be turned off automatically.



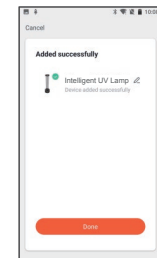
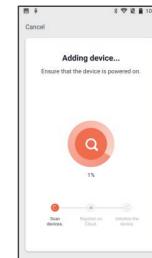
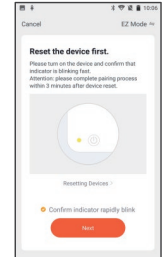
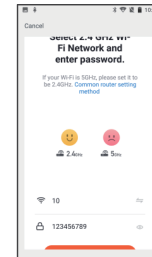
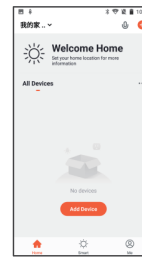
## Register and log in

- 1) Go to the App store and download the "tuya" APP.
- 2) After successfully download the "tuya" APP then installs it.
- 3) Open "tuya" and select "Register Account" to enter complete information to register.
- 4) After successfully register, enter the registered account and password , then click "Log in" to enter "Add Device" menu.



## Network paring

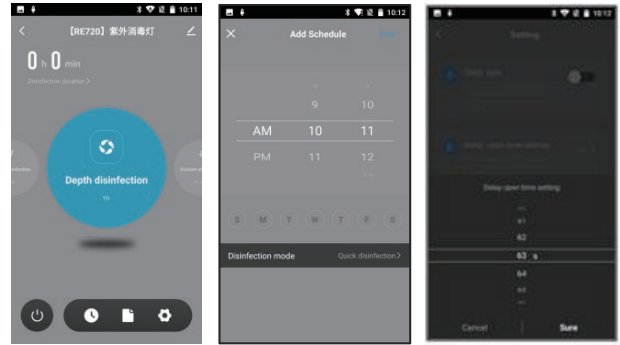
1. Connect your phone to the normal 2.4G Wi-Fi network.
2. Turn on the device and power switch.
3. 1) When starting the machine for the first time, the Wi-Fi indicator will flash quickly and enter the distribution network mode.  
3.2) If the equipment has been configured before, press and hold the power key for 5 seconds to enter the distribution mode.
4. Open the "tuya" app, click "Add device" or "+" to enter "add device" menu, then select "others".
5. Select the same Wi-Fi which your phone is connected to, enter the correct password, and click "Next" to start searching the device.
6. Checking whether the Wi-Fi indicator is flashing quickly. If it's flashing, please select "confirm the indicator is flashing".
7. After finding the device, it will automatically connect the device and pairing the network. .
8. After the network pairing is successful, rename the device name, click "Complete", and then display "Add Successfully".



## Tuya app control

Enter the control menu, do as the following shown :

1. Click on / off, default time is 10 seconds to turn on the UV-C lamp (start the radar detection, if the moving body or animals are detected, it will not start until 10 seconds after detecting the living body or animal left)
2. Timing function: You can set to start/stop the UV lamp from a certain time (default working time is the current default time selected on the main panel).
3. Delay function: You can set the delay time according to your needs.

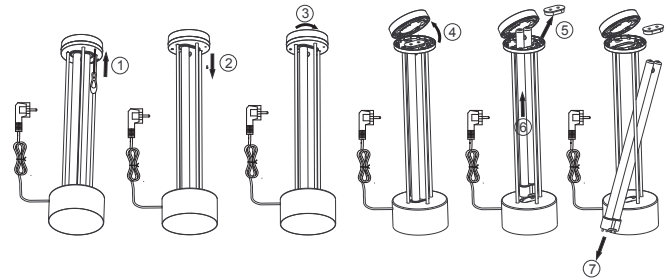


---

## Replace the lamp tube

If the lamp tube needs to be replaced, please replace with the original lamp tube and complete the operation under the guidance of professionals:

1. Locate and remove the fixing screws for the top cover under the top seat.
2. Rotate the top cover clockwise to unlock it.
3. Uncover the top cover, and then remove the fixing foam.
4. Take out the old lamp tube upwards.
5. Install the new lamp tube to the lamp base, cover with the fixing foam.
6. Fasten the top cover and rotate it counterclockwise to lock it.
7. Tighten the fixing screws to complete the replacement.





**Warning:**

Changes or modifications to this unit not expressly approved by the party responsible for compliance could void the user's authority to operate the equipment.

**NOTE:**

This device complies with part 15 of the FCC Rules. Operation is subject to the following two conditions: (1) This device may not cause harmful interference, and (2) this device must accept any interference received, including interference that may cause undesired operation.

**FCC Statement:**

This equipment has been tested and found to comply with the limits for a Class B digital device, pursuant to part 15 of the FCC Rules. These limits are designed to provide reasonable protection against harmful interference in a residential installation. This equipment generates, uses and can radiate radio frequency energy and, if not installed and used in accordance with the instructions, may cause harmful interference to radio communications. However, there is no guarantee that interference will not occur in a particular installation. If this equipment does cause harmful interference to radio or television reception, which can be determined by turning the equipment off and on, the user is encouraged to try to correct the interference by one or more of the following measures:

- Reorient or relocate the receiving antenna.
- Increase the separation between the equipment and receiver.
- Connect the equipment into an outlet on a circuit different from that to which the receiver is connected.
- Consult the dealer or an experienced radio/TV technician for help.

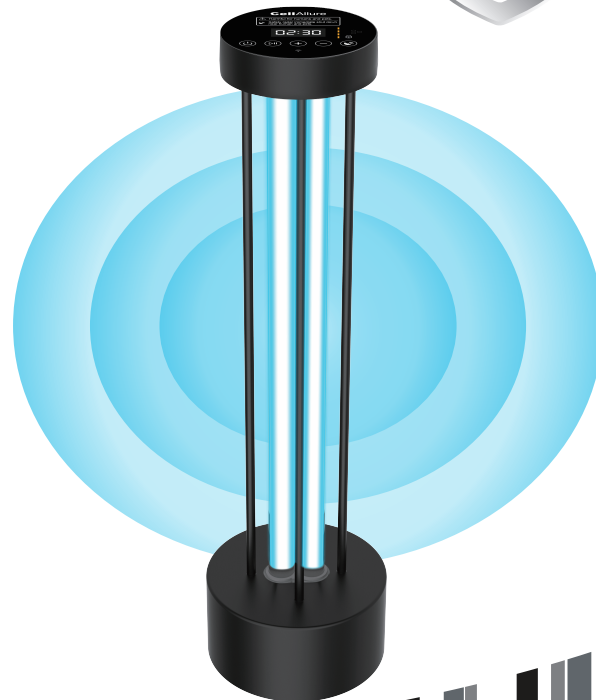
**RF exposure compliance statement:**

This device has been evaluated to meet the general RF exposure requirement

# CellAllure<sup>®</sup>

## SMART UV LAMP

manual de usuario



Control From Anywhere

