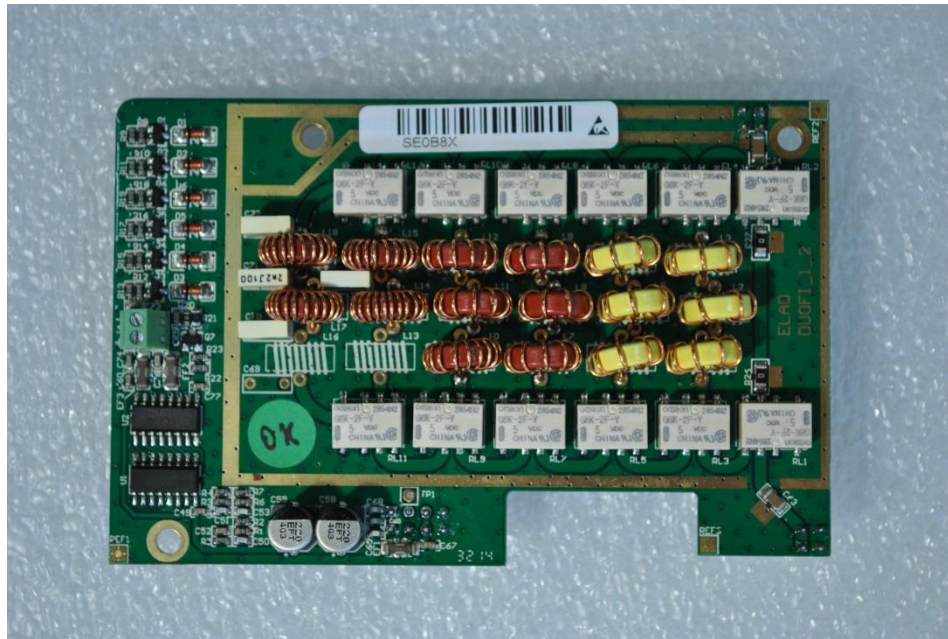
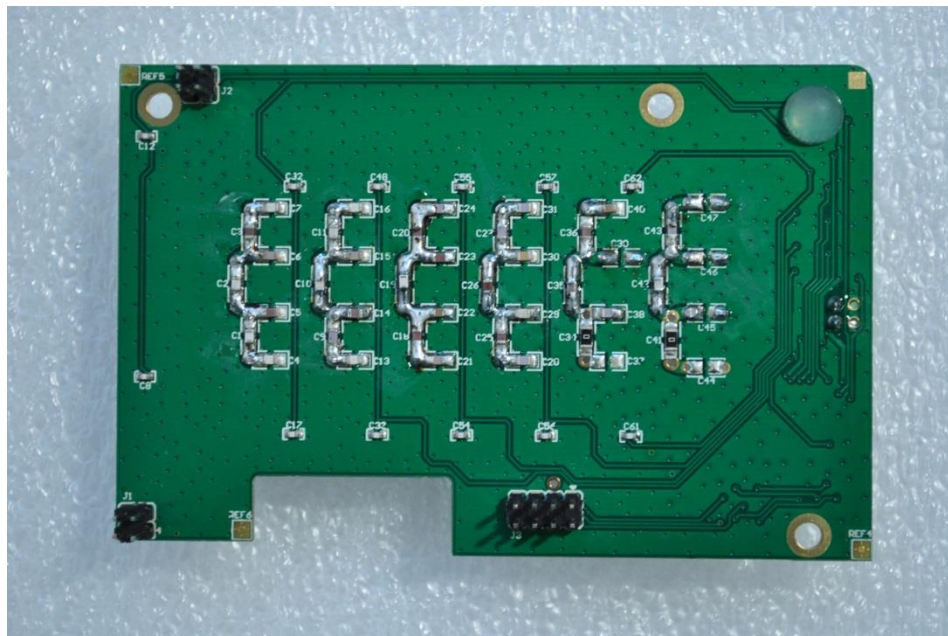


ELAD FDM-DUO Internal Photos

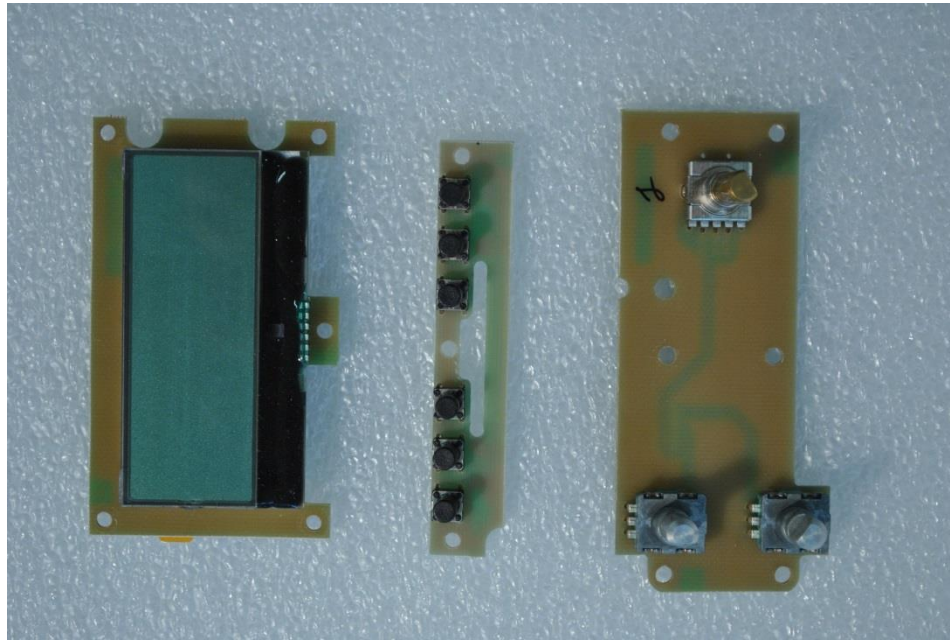
1 DUOFI Board: Top PCB View



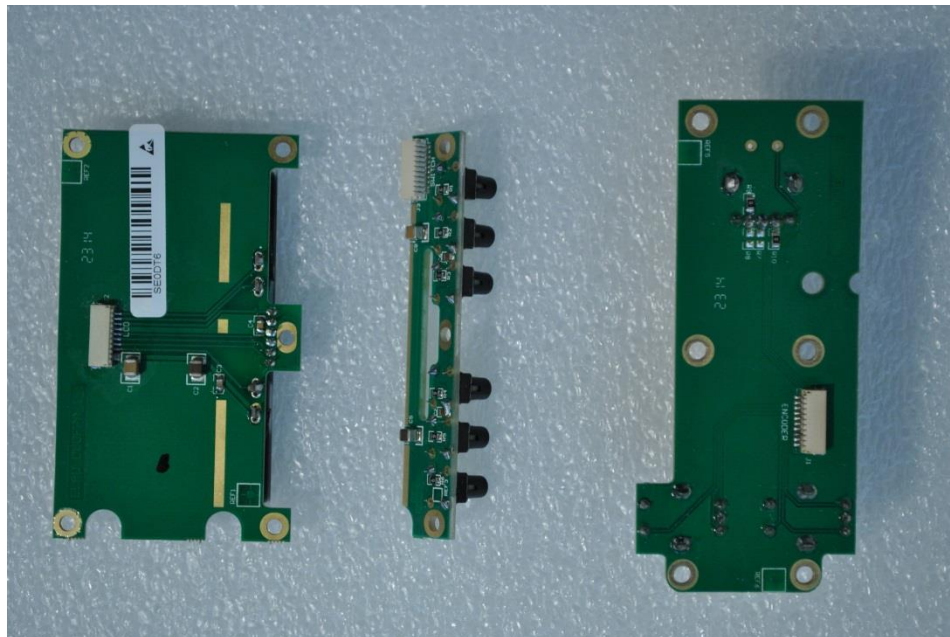
2 DUOFI Board: Bottom PCB View



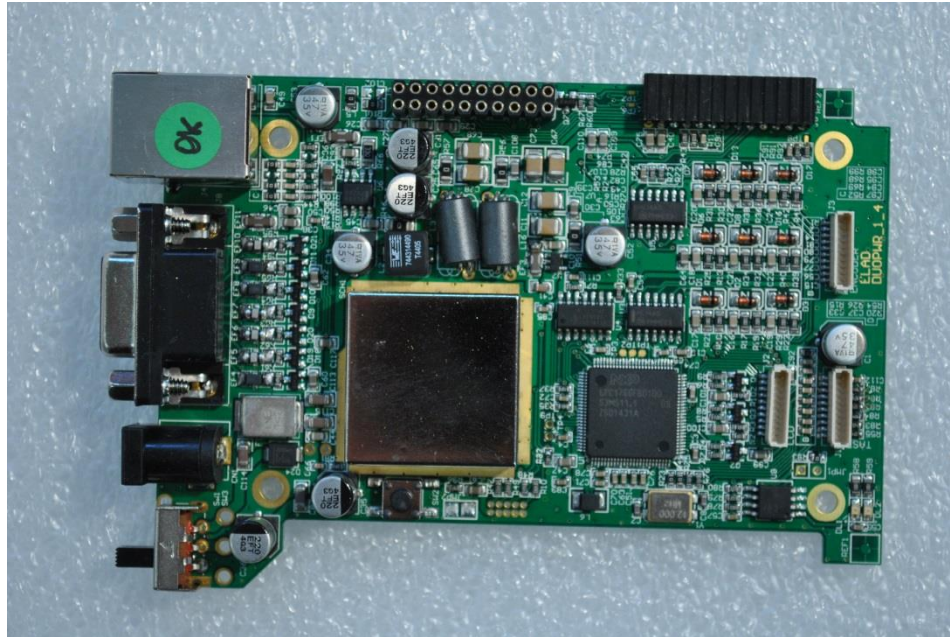
3 DUOFP Board: Top PCB View



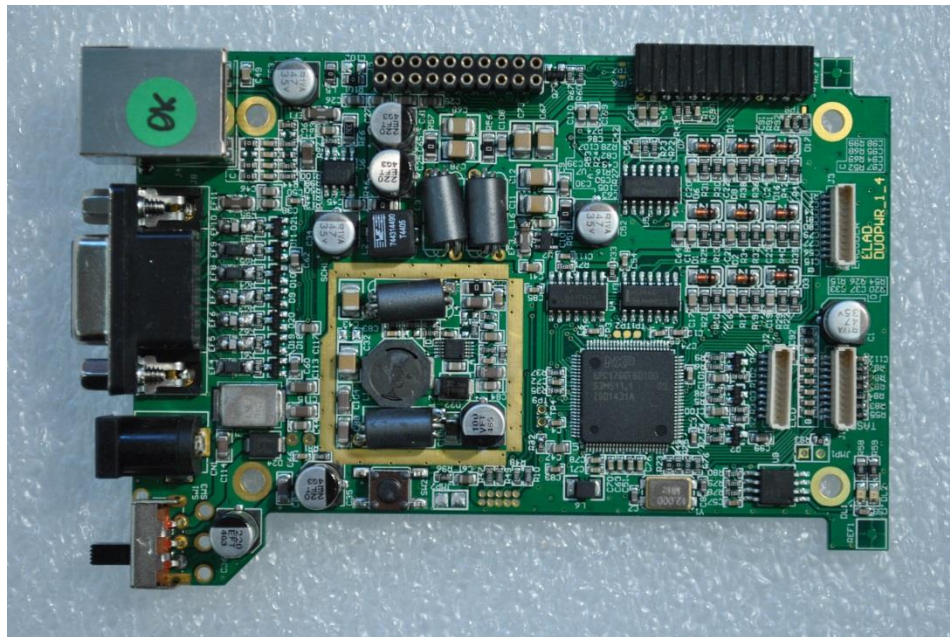
4 DUOFP Board: Bottom PCB View



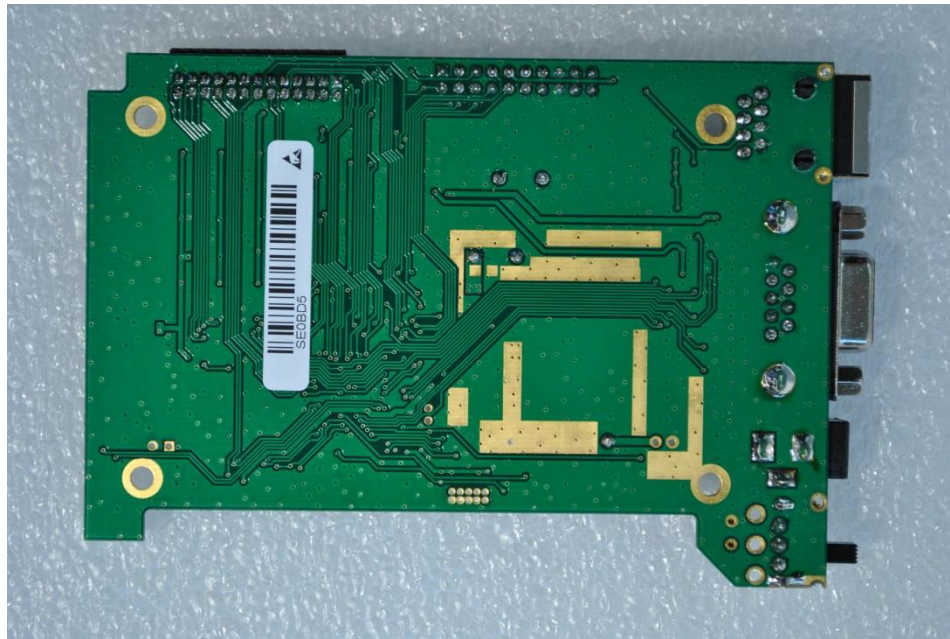
5 DUOPWR Board: Top PCB View (with shield)



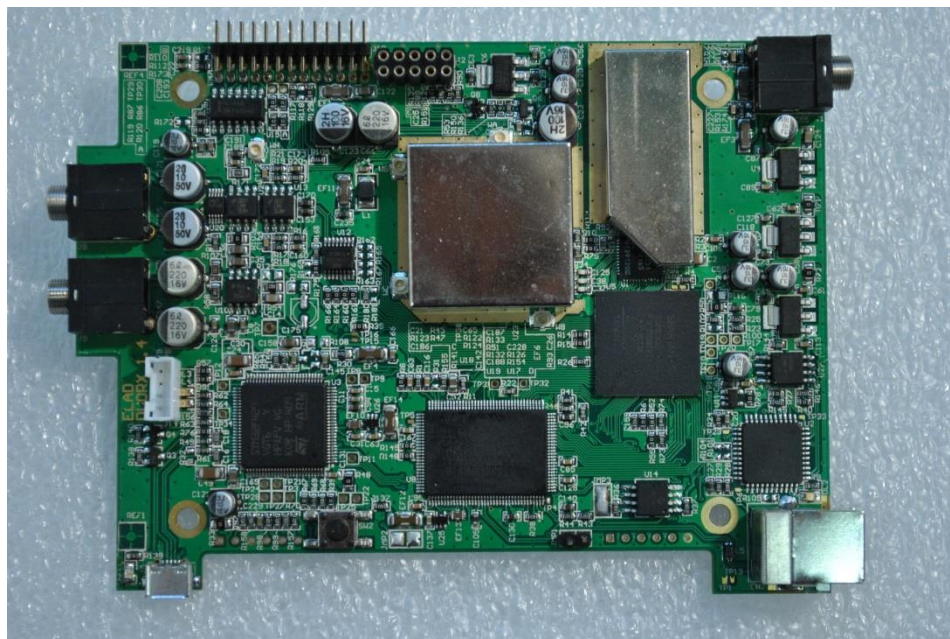
6 DUOPWR Board: Top PCB View (without shield)



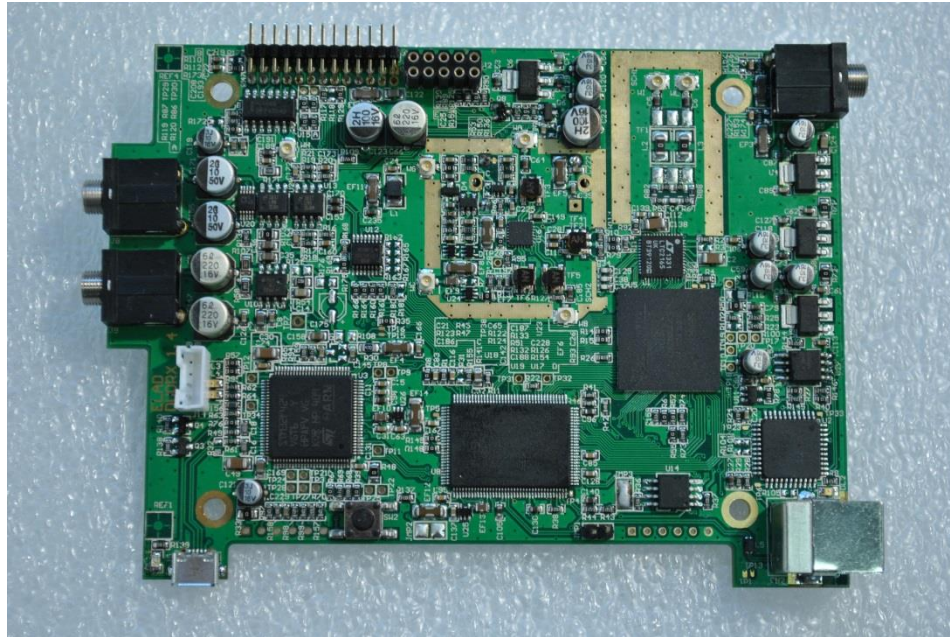
7 DUOPWR Board: Bottom PCB View



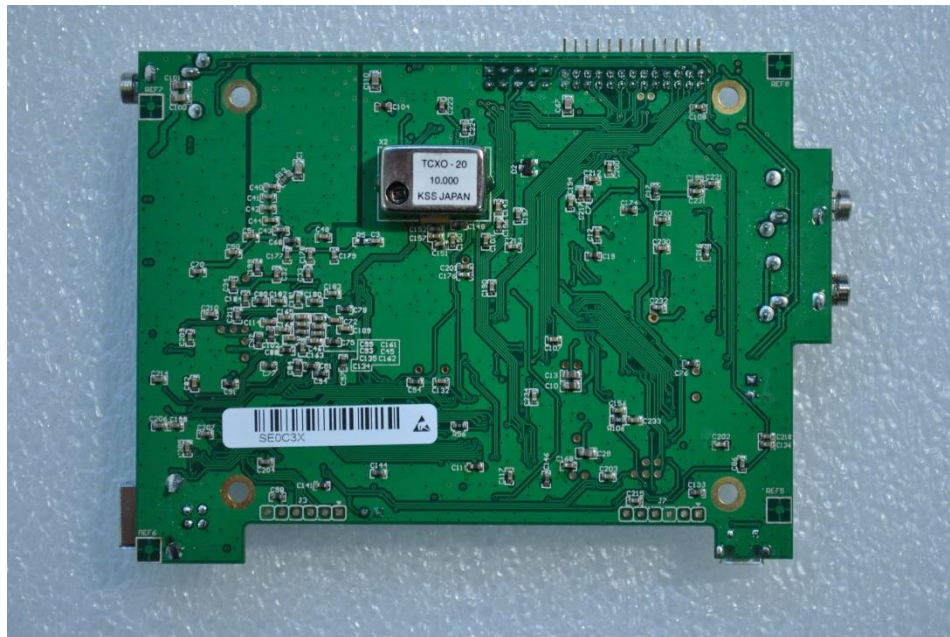
8 DUORX Board: Top PCB View (with shield)



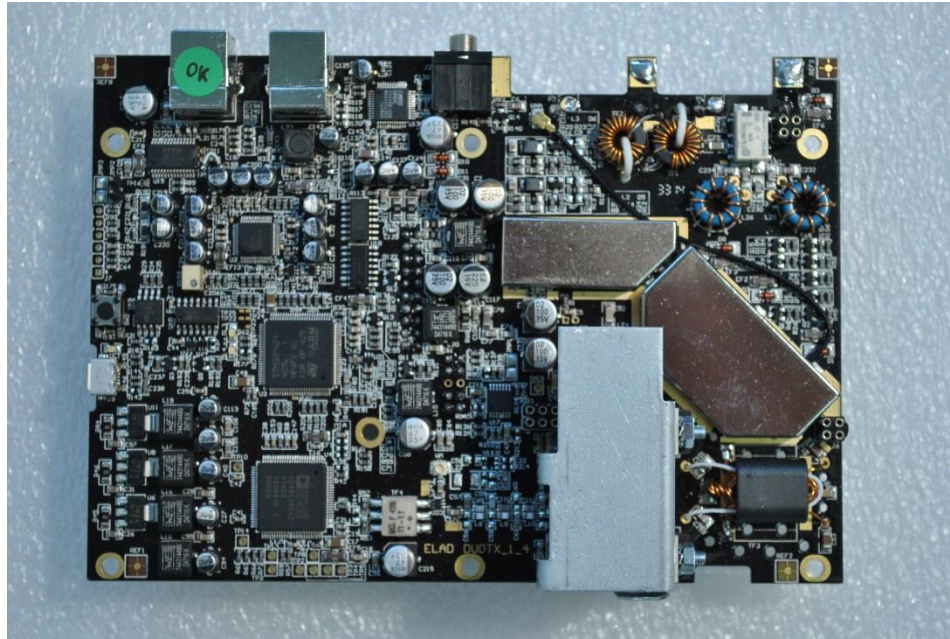
9 DUORX Board: Top PCB View (without shield)



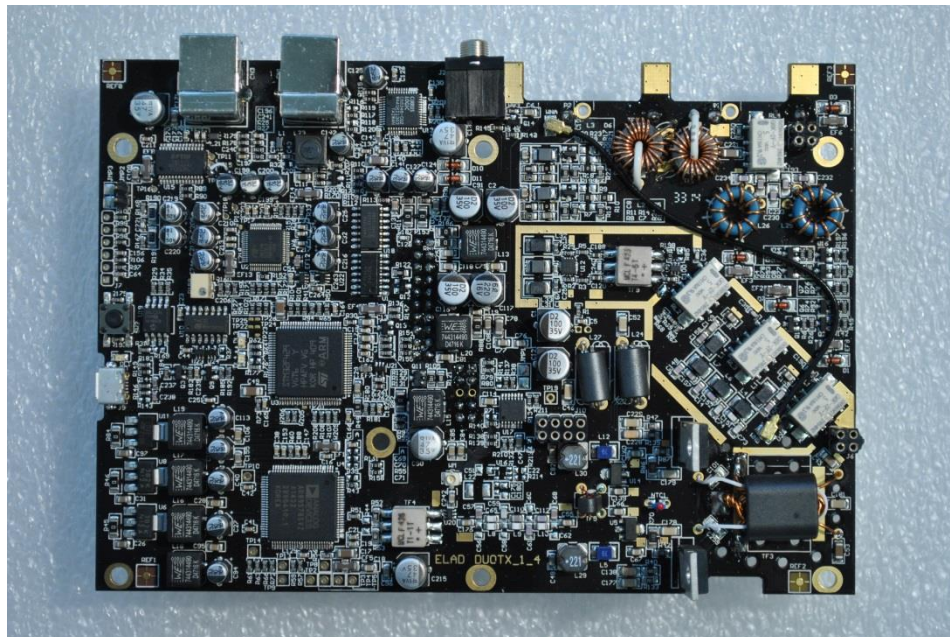
10 DUORX Board: Bottom PCB View



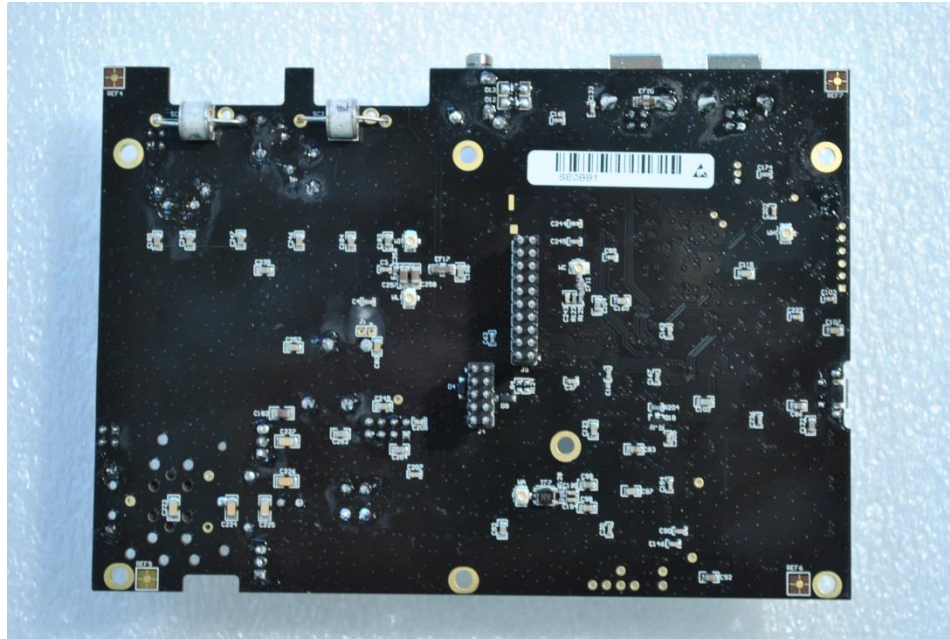
11 DUOTX Board: Top PCB View (with shield and heatsink)



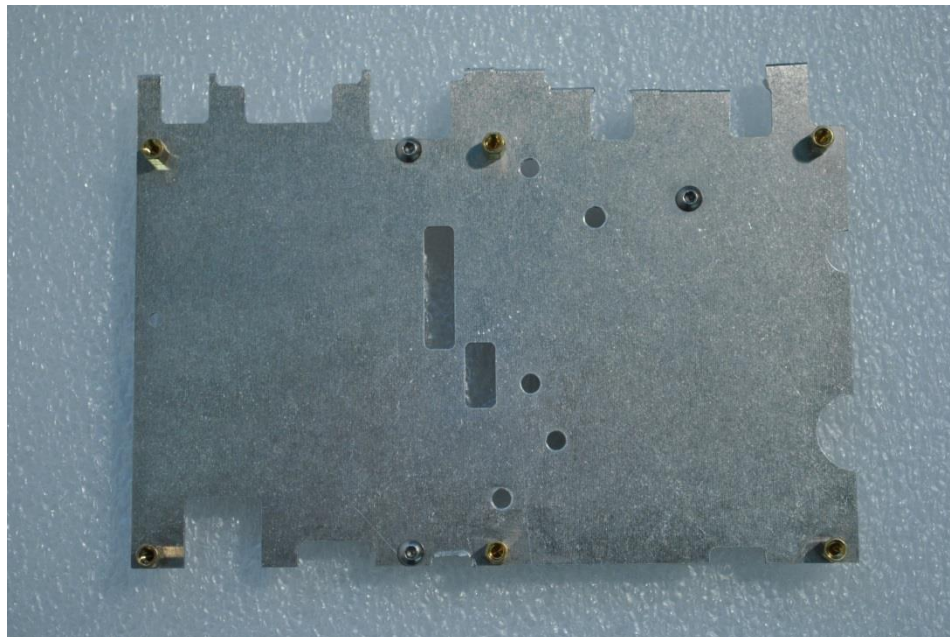
12 DUOTX Board: Top PCB View (without shield and heatsink)



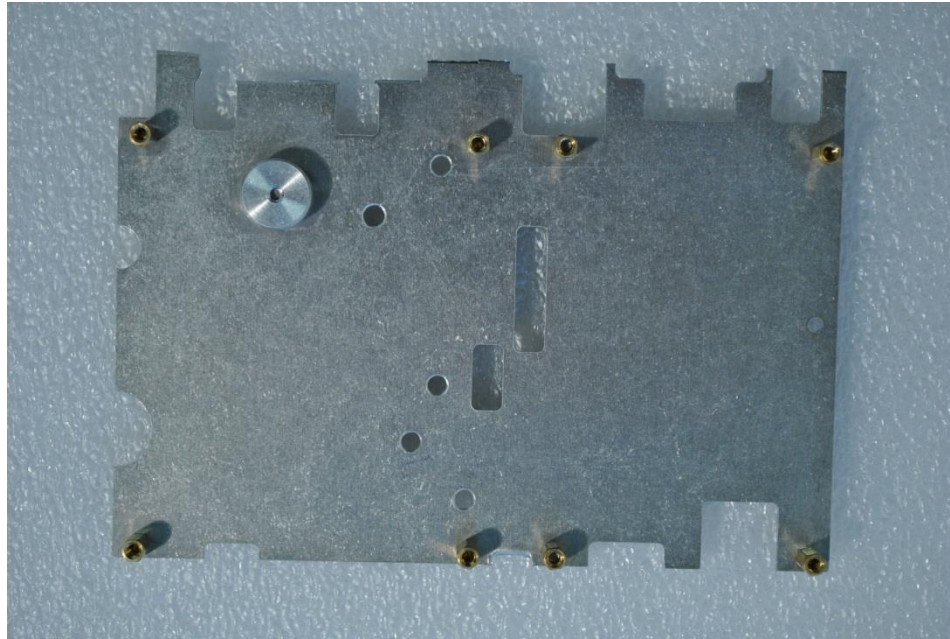
13 DUOTX Board: Bottom PCB View



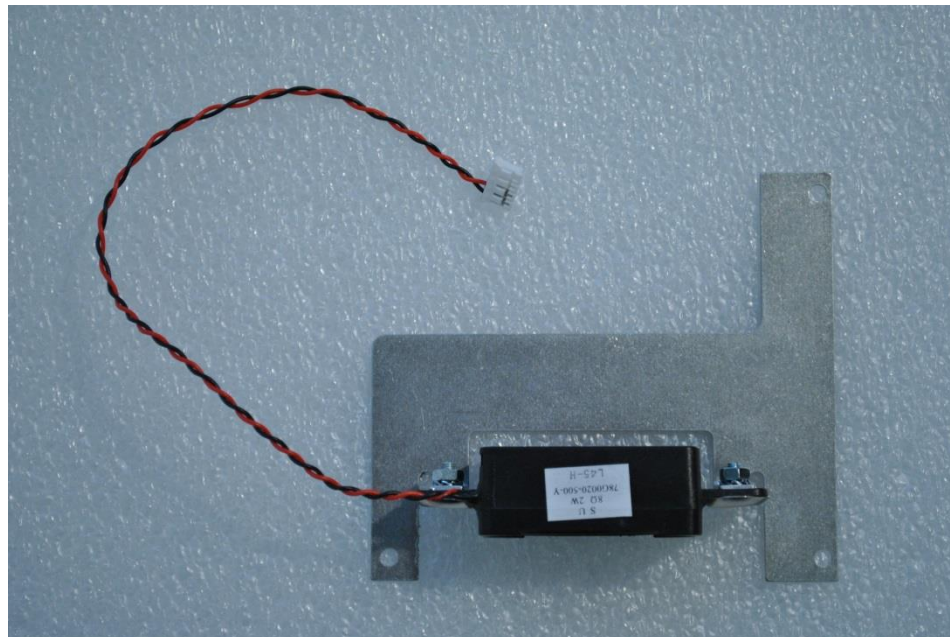
14 Intermediate Shield/Heatsink: Top View



15 Intermediate Shield/Heatsink: Bottom View



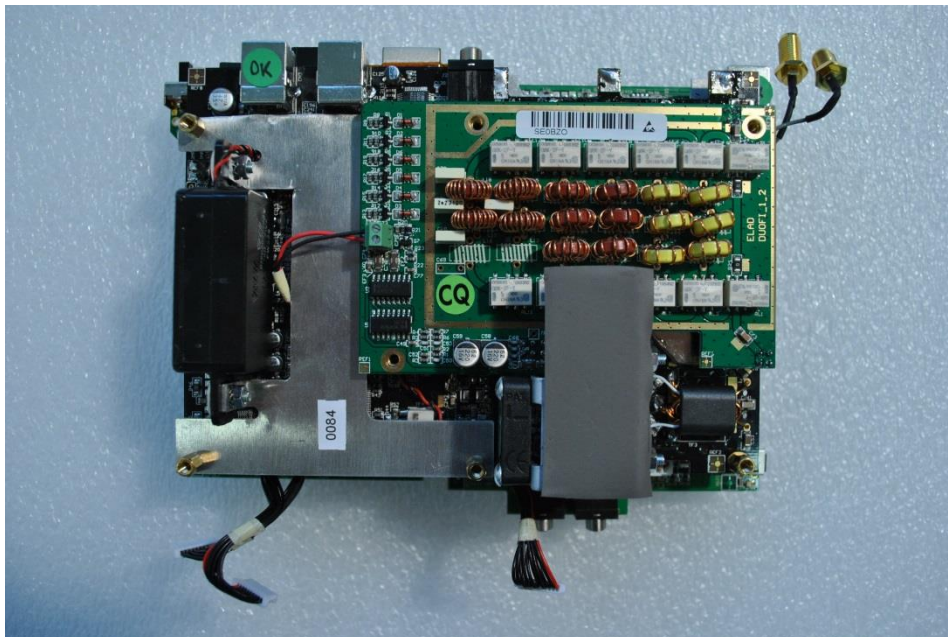
16 Internal Speaker: Top View



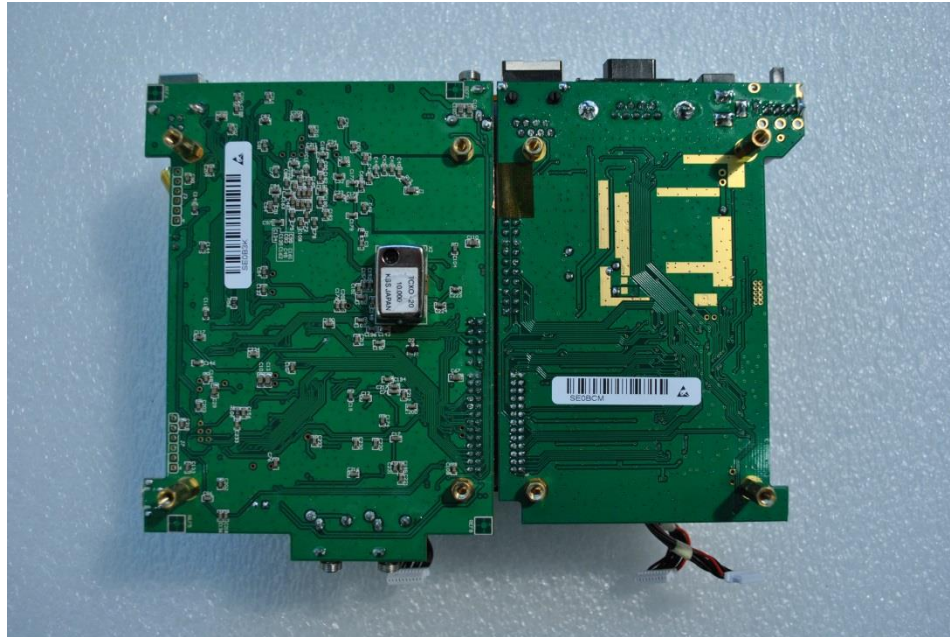
17 Internal Speaker: Front View



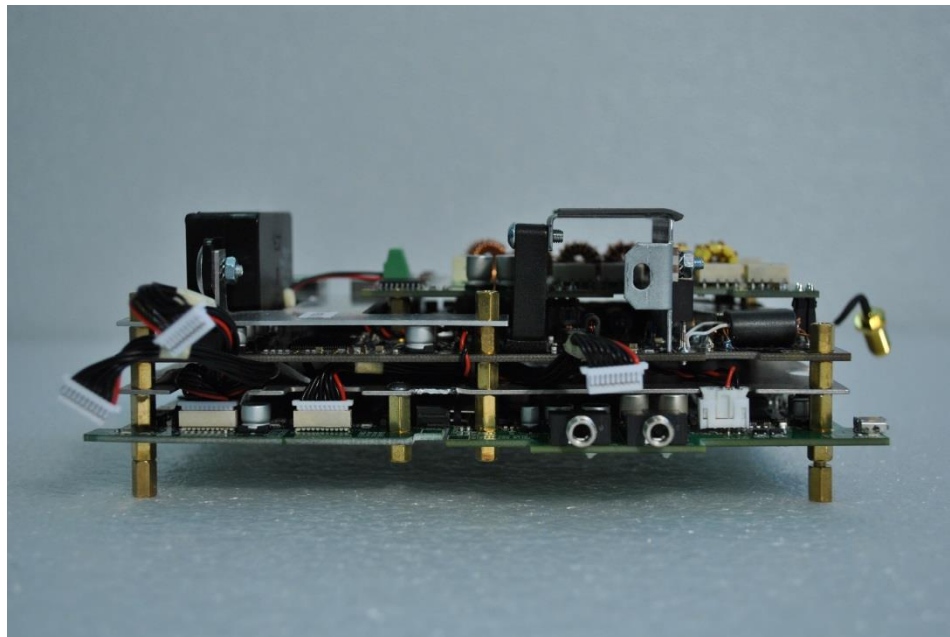
18 Boards Stack: Top View



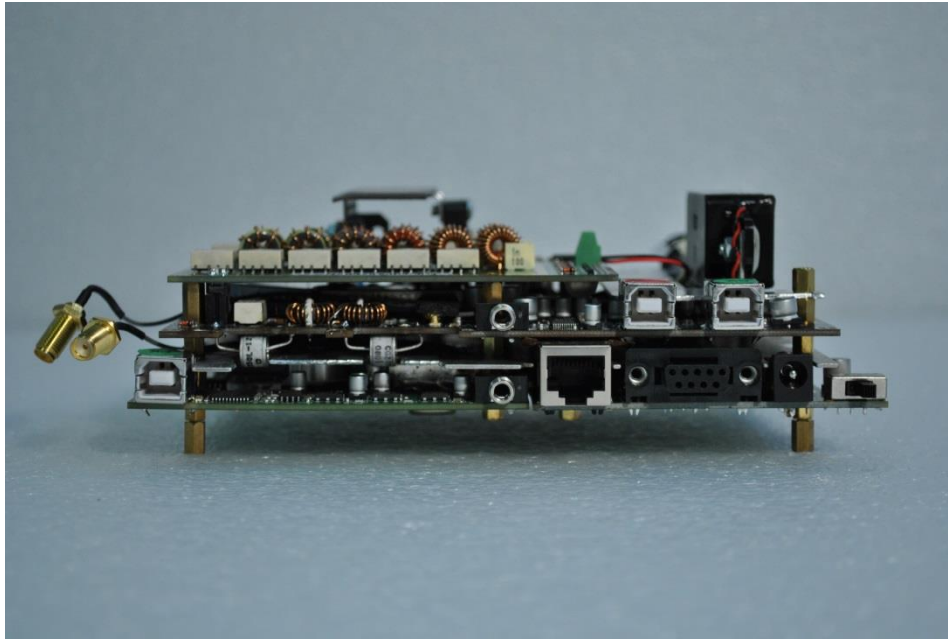
19 Boards Stack: Bottom View



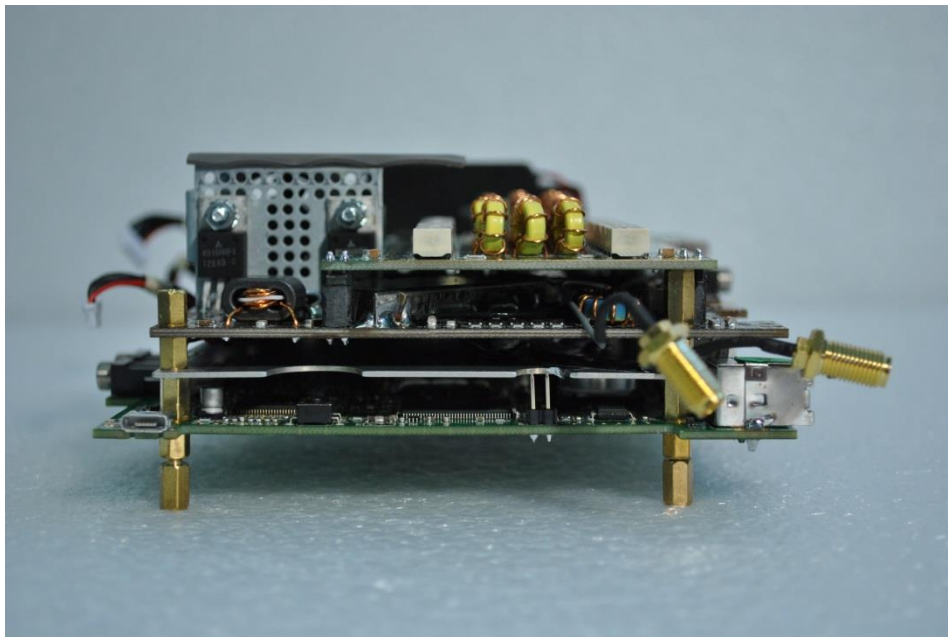
20 Boards Stack: Front View

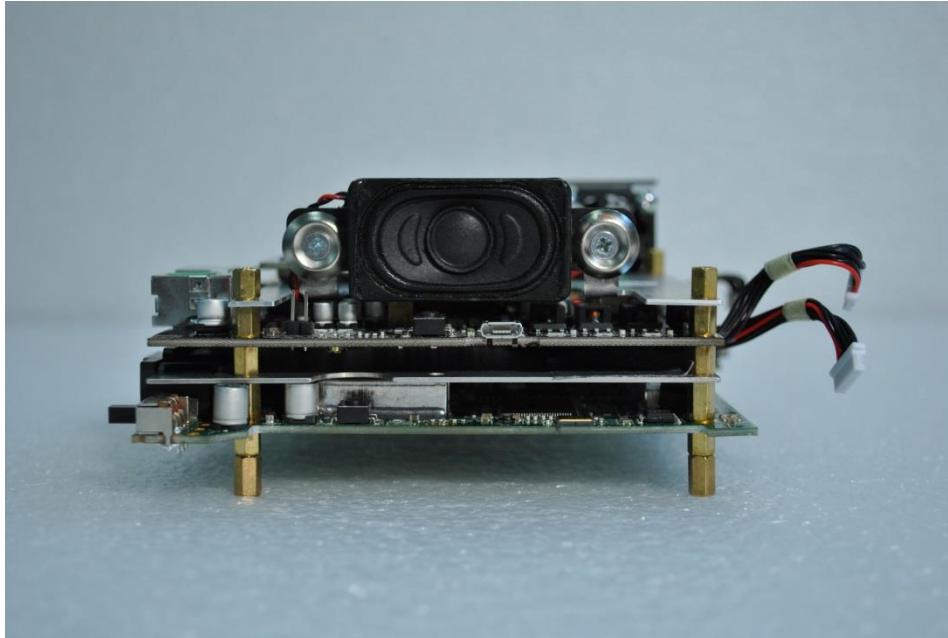


21 Boards Stack: Rear View

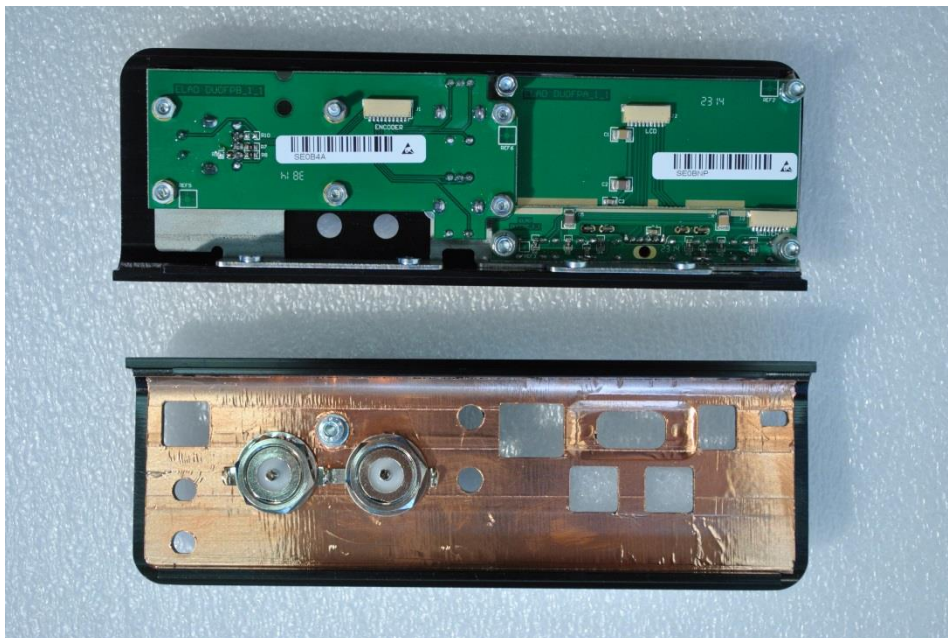


22 Boards Stack: Side View

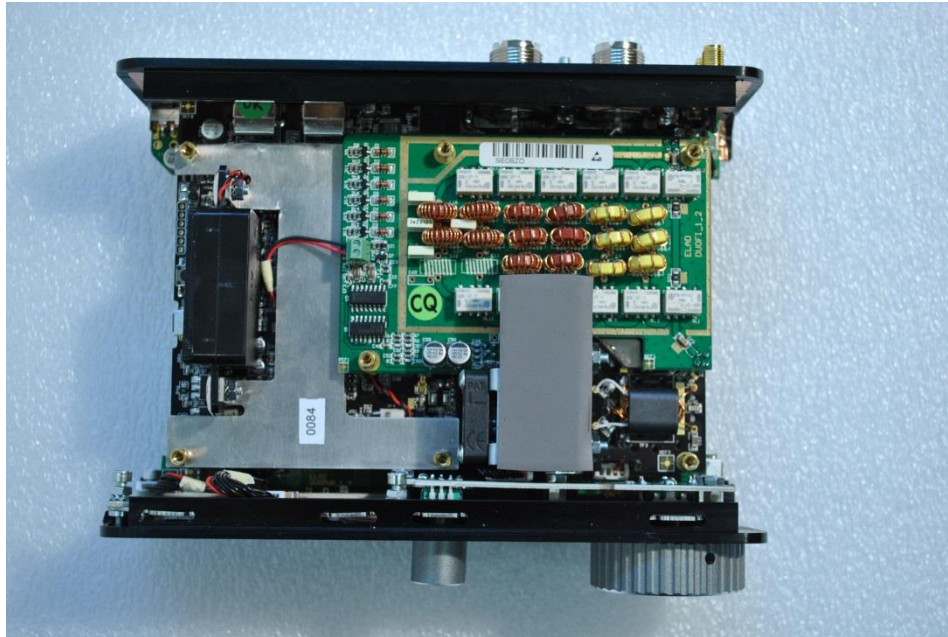




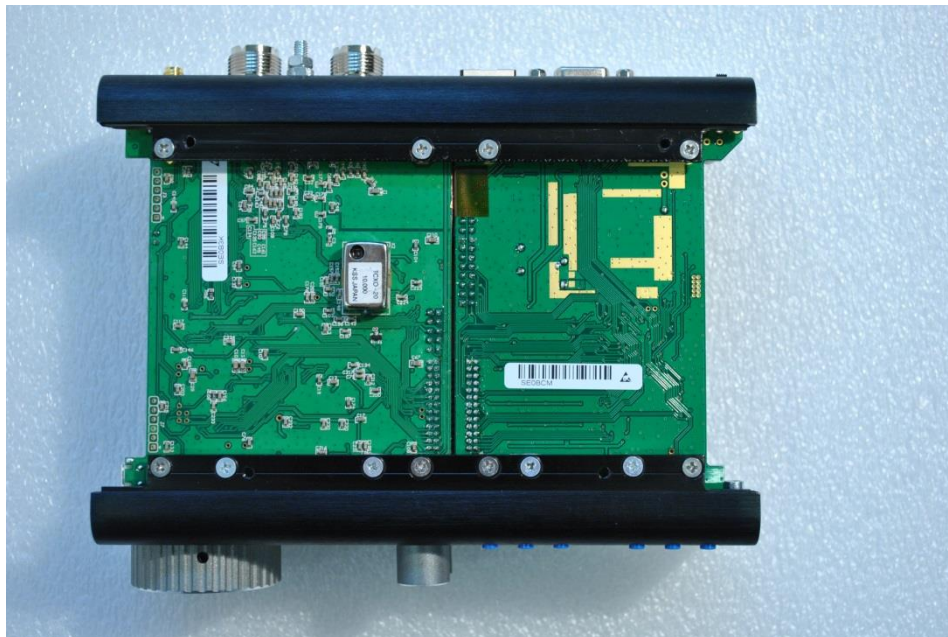
23 Front and Back Panels Mounted: Front View



24 Final Assembly without Covers: Top View



25 Final Assembly without Covers: Bottom View



26 Final Assembly without Covers: Side View

