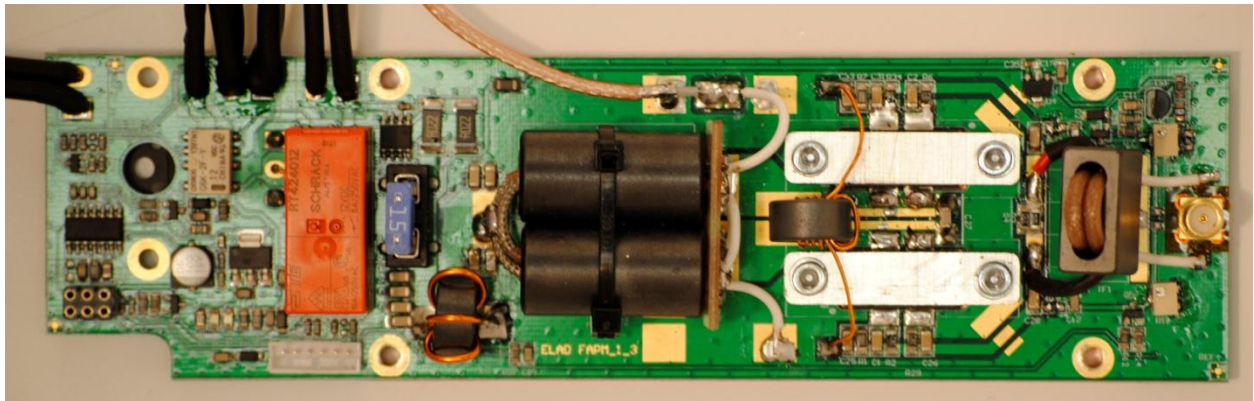


## ELAD DUOART60 Internal Photos

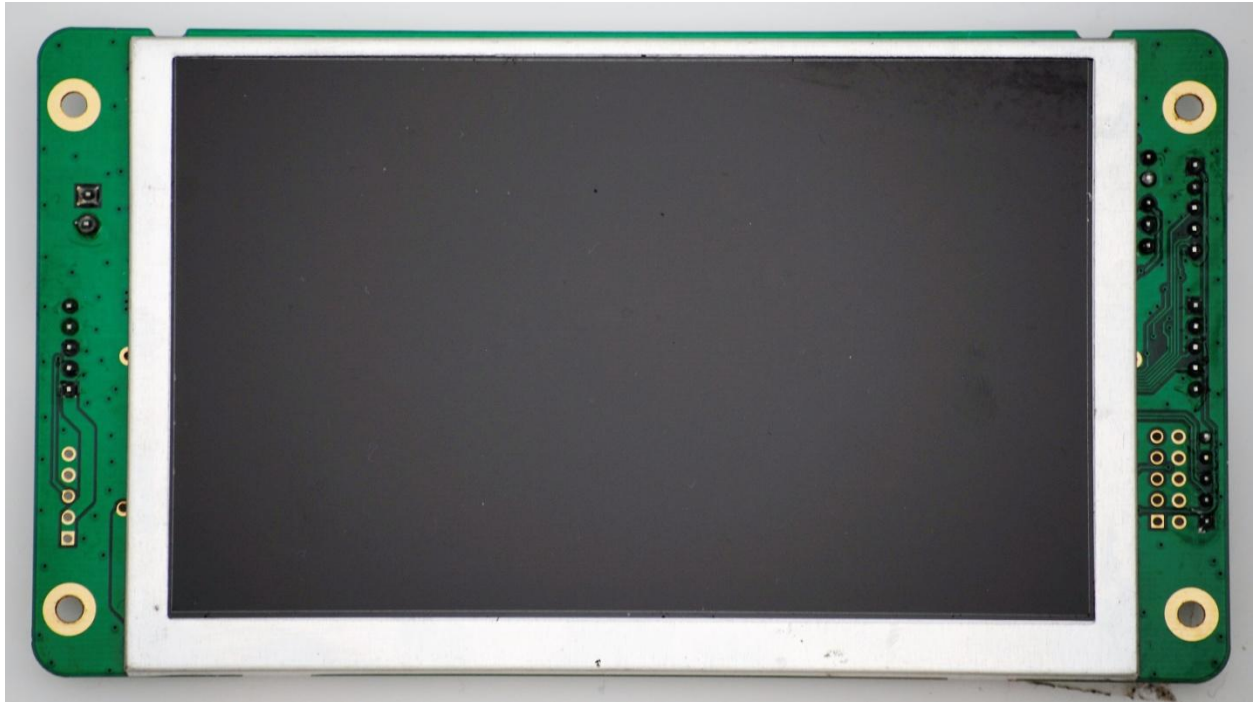
### 1 DUOART60\_FAPM Board: Top PCB View



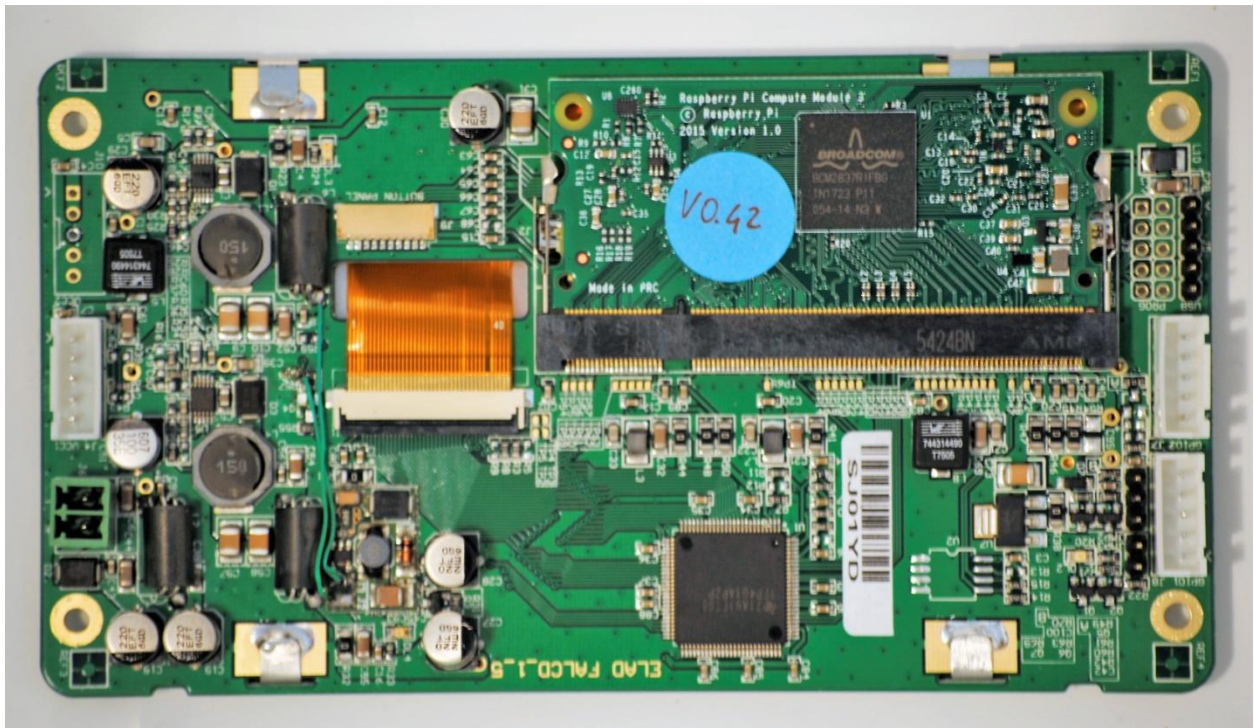
### 2 DUOART60\_FAPM Board: Bottom PCB View



### 3 DUOART60\_FALCD Board: Top PCB View

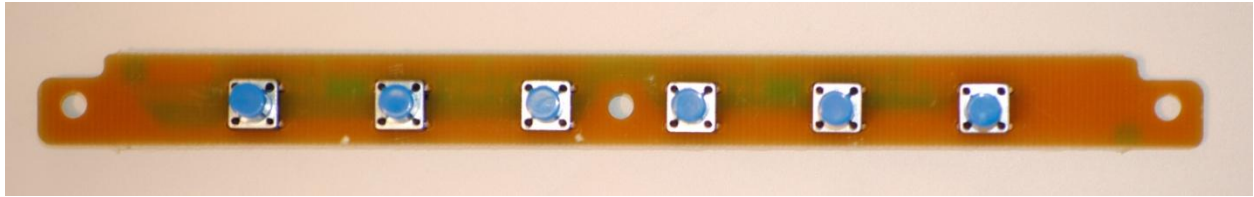


### 4 DUOART60\_FALCD Board: Bottom PCB View

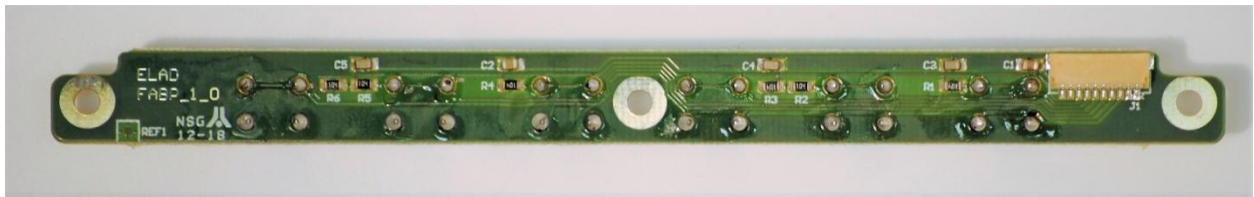




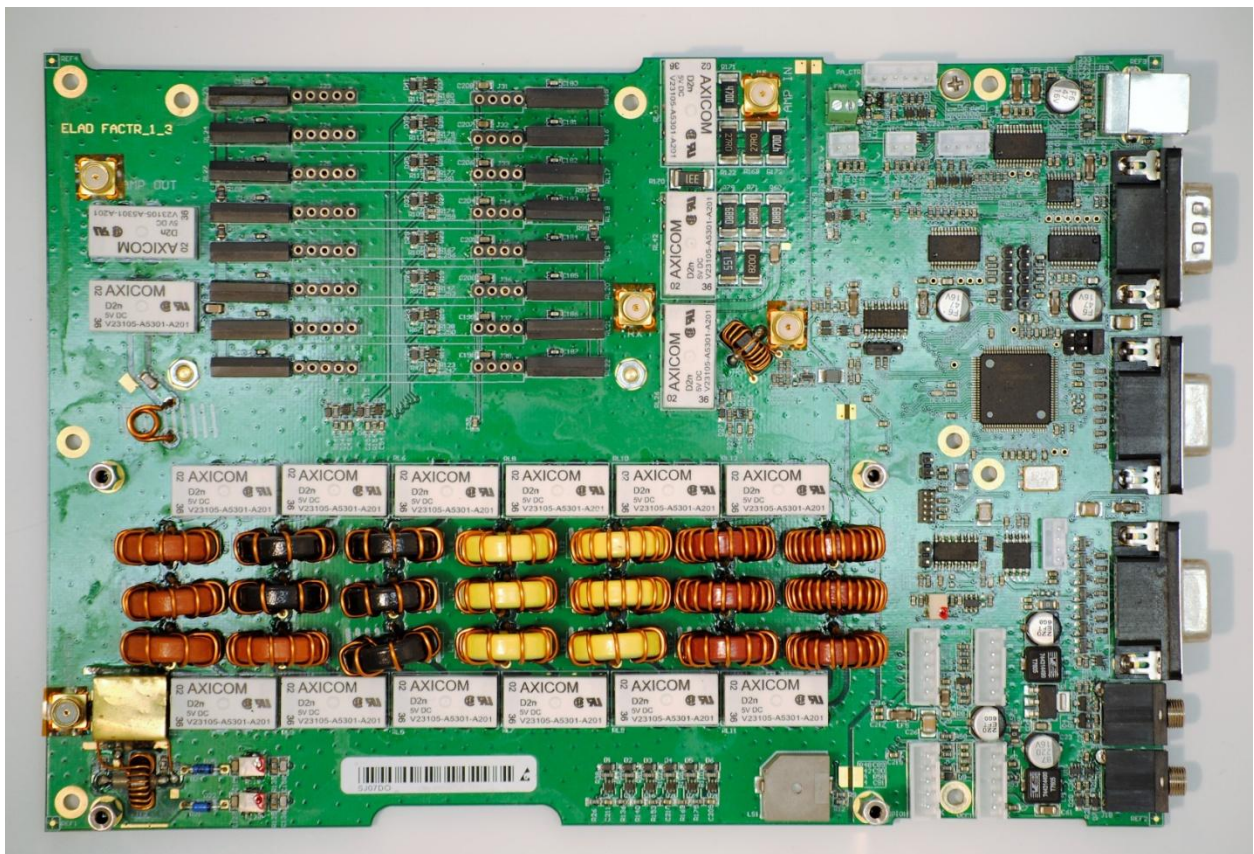
## 5 DUOART60\_FABP Board: Top PCB View



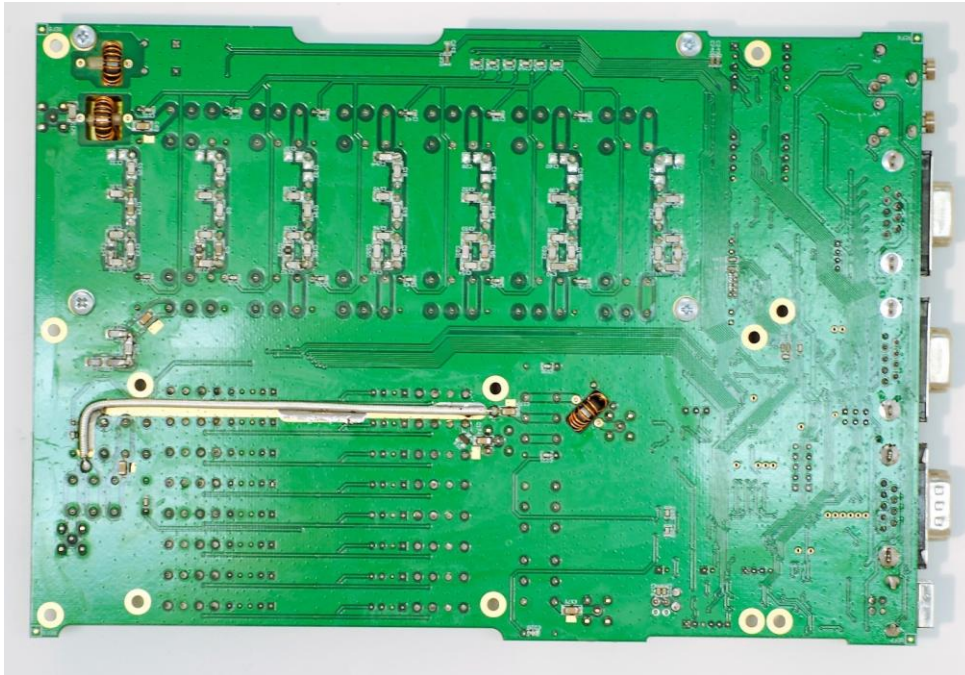
## 6 DUOART60\_FABP Board: Bottom PCB View



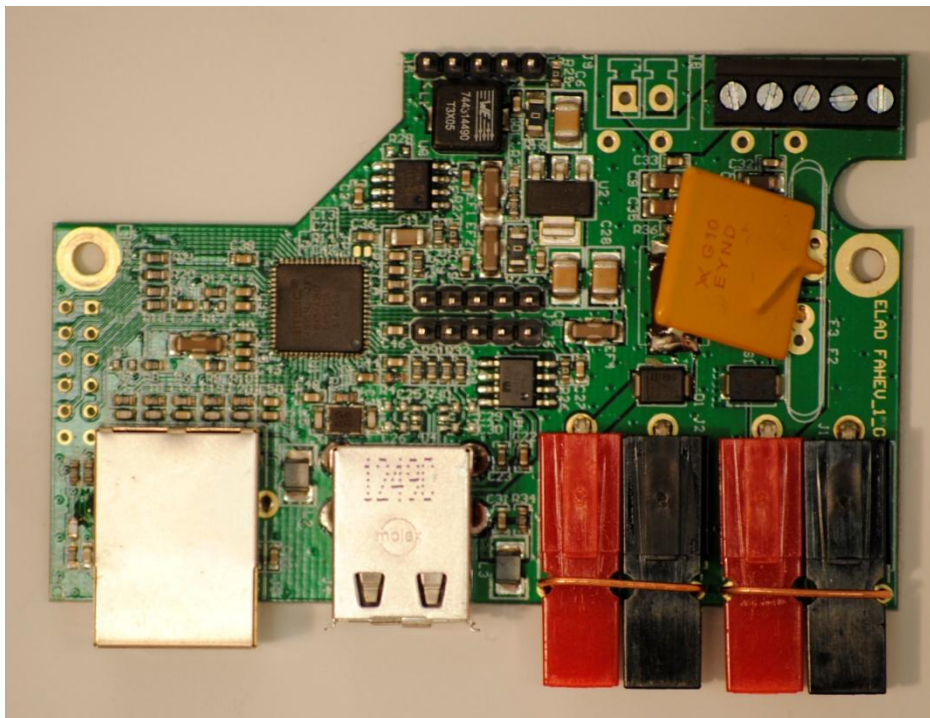
## 7 DUOART60\_FACTR Board: Top PCB View



## 8 DUOART60\_FACTR Board: Bottom PCB View

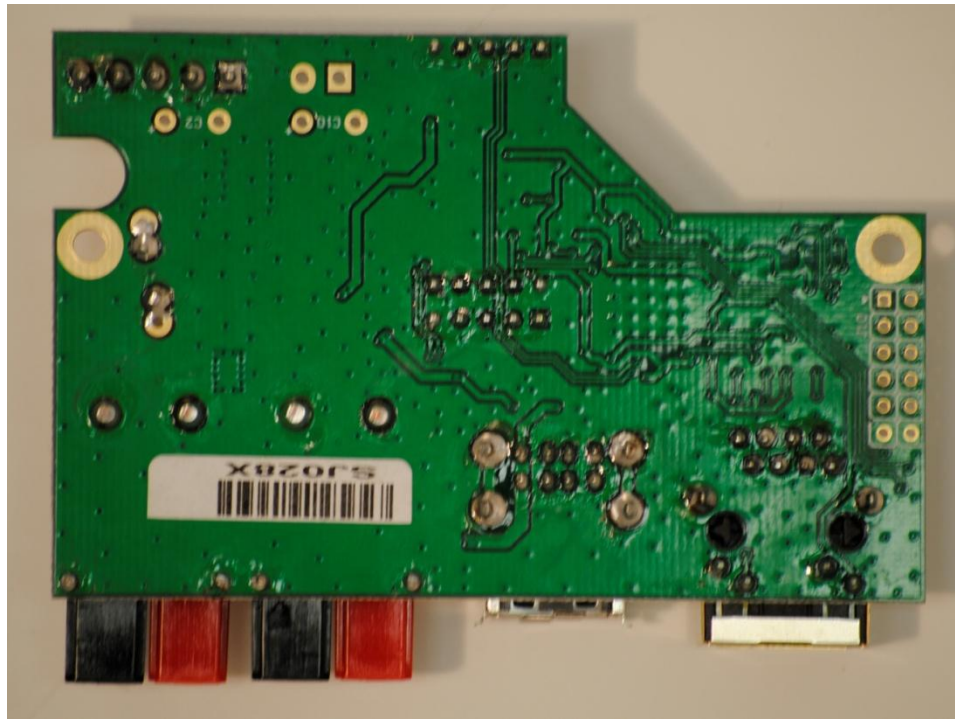


## 9 DUOART60\_FAHEV Board: Top PCB View

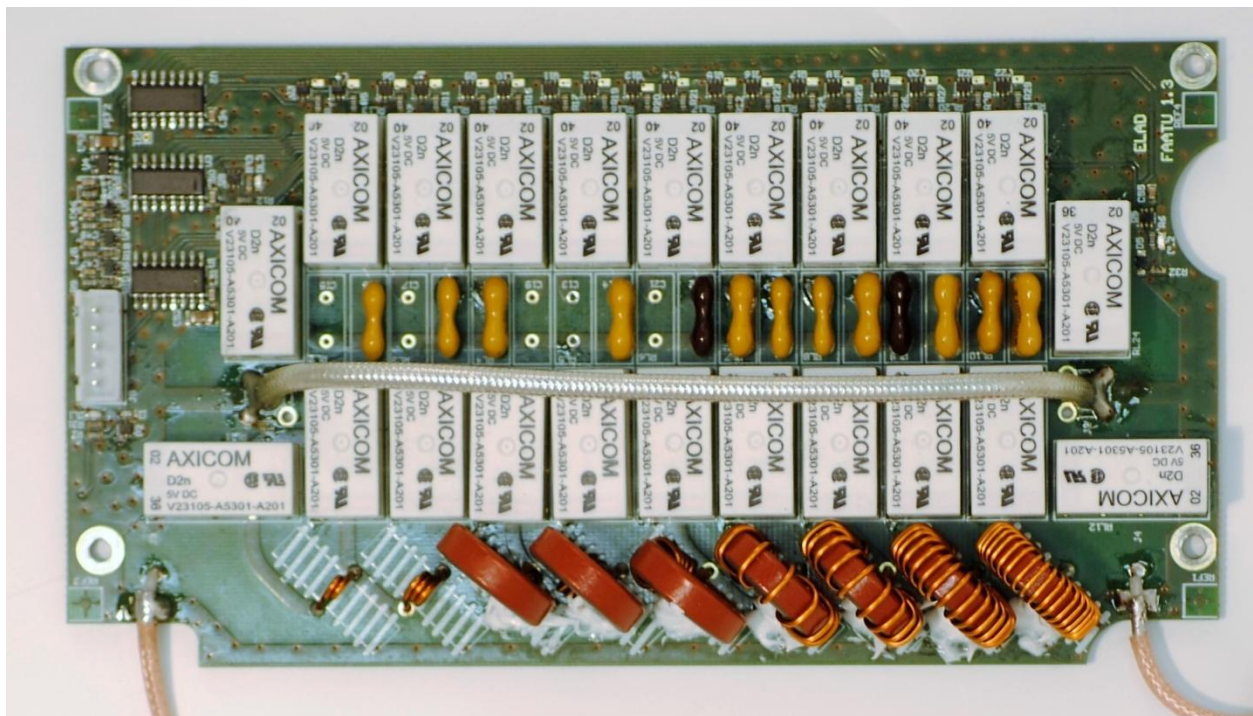




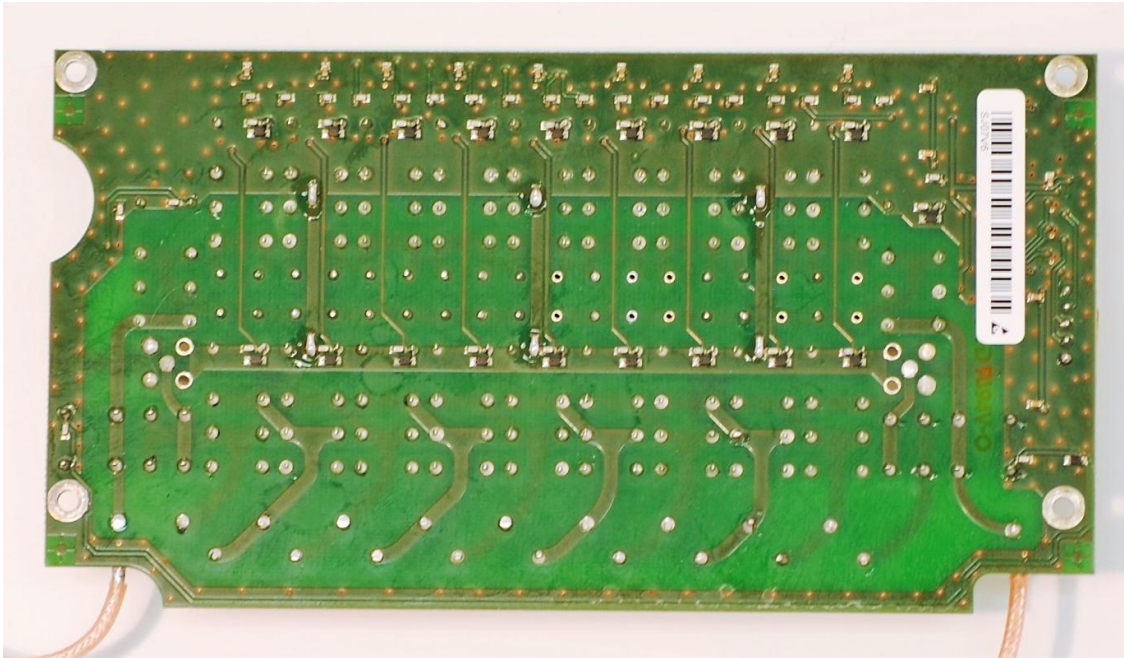
## 10 DUOART60\_FAHEV Board: Bottom PCB View



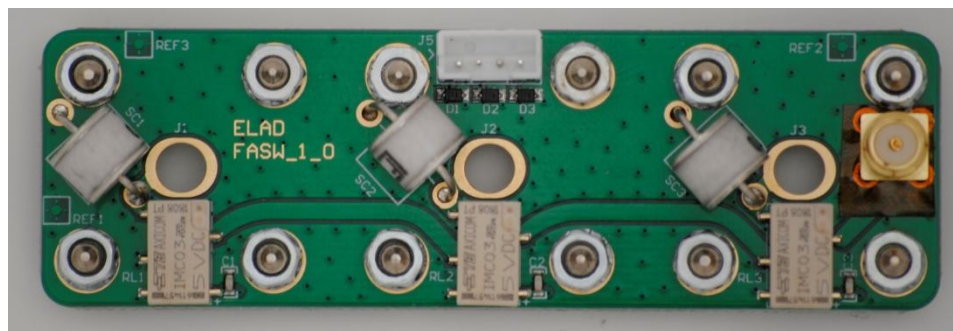
## 11 DUOART60\_FAATU Board: Top PCB View



## 12 DUOART60\_FAATU Board : Bottom PCB View



## 13 DUOART60\_FASW Board: Top PCB View

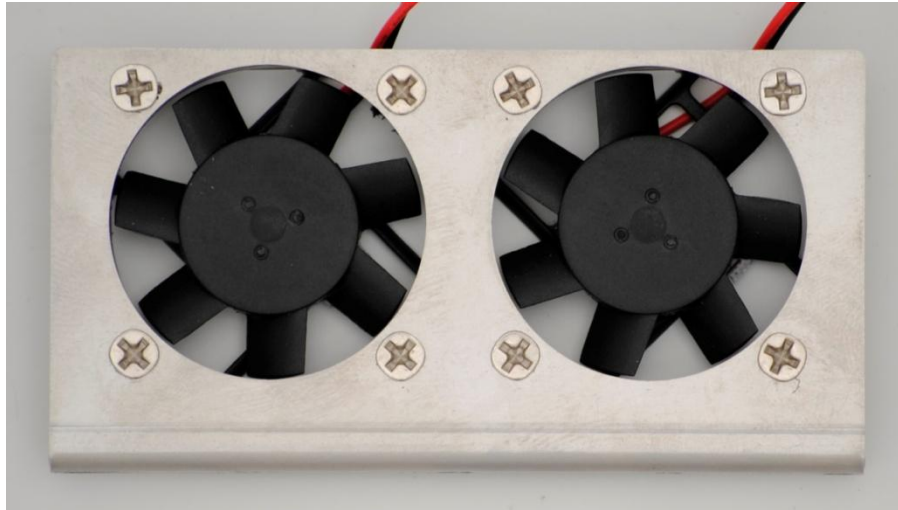


## 14 DUOART60\_FASW Board: Bottom View

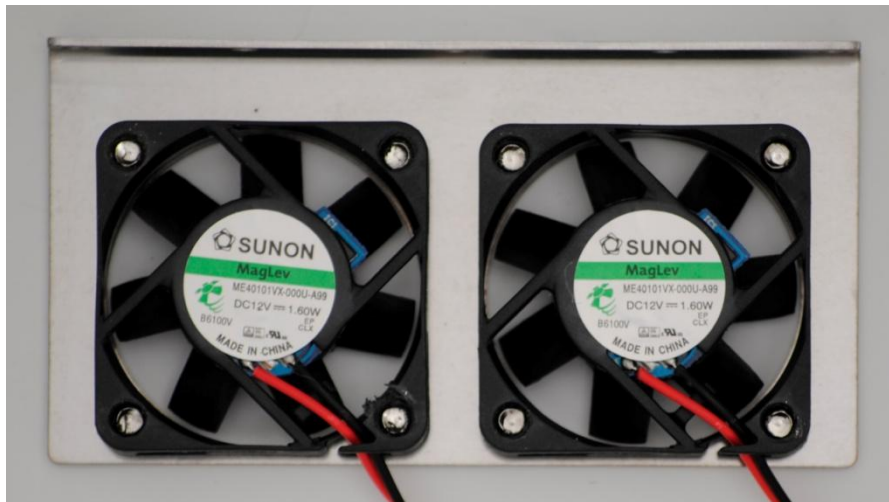




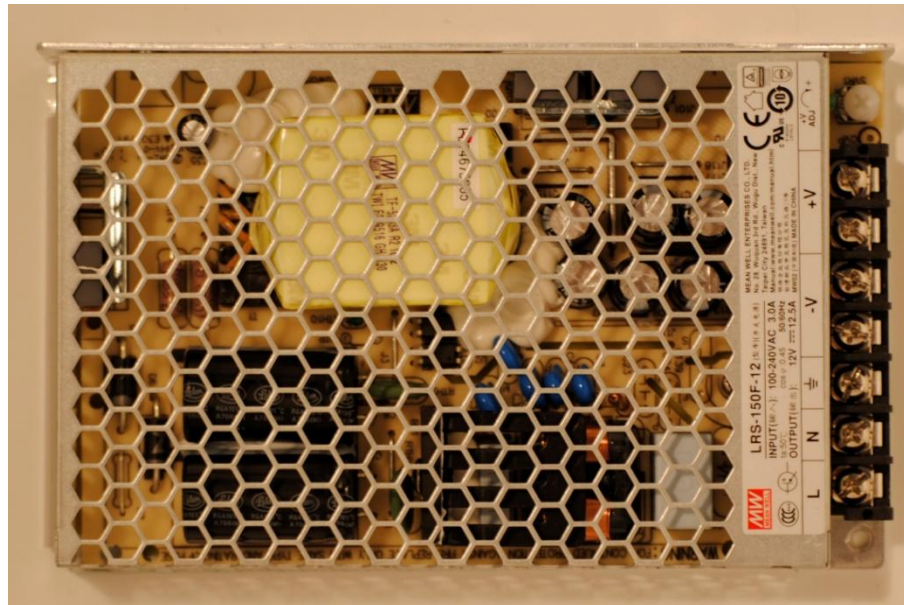
## 15 DUOART60 Fans Board: Top View



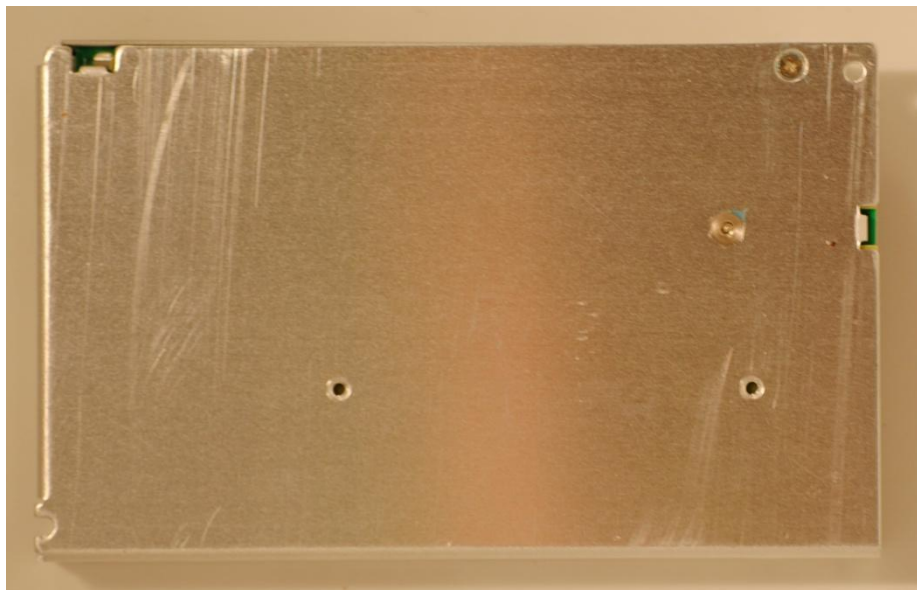
## 16 DUOART60 Fans Board: Bottom View



## 17 DUOART60 Power Supply: Top View

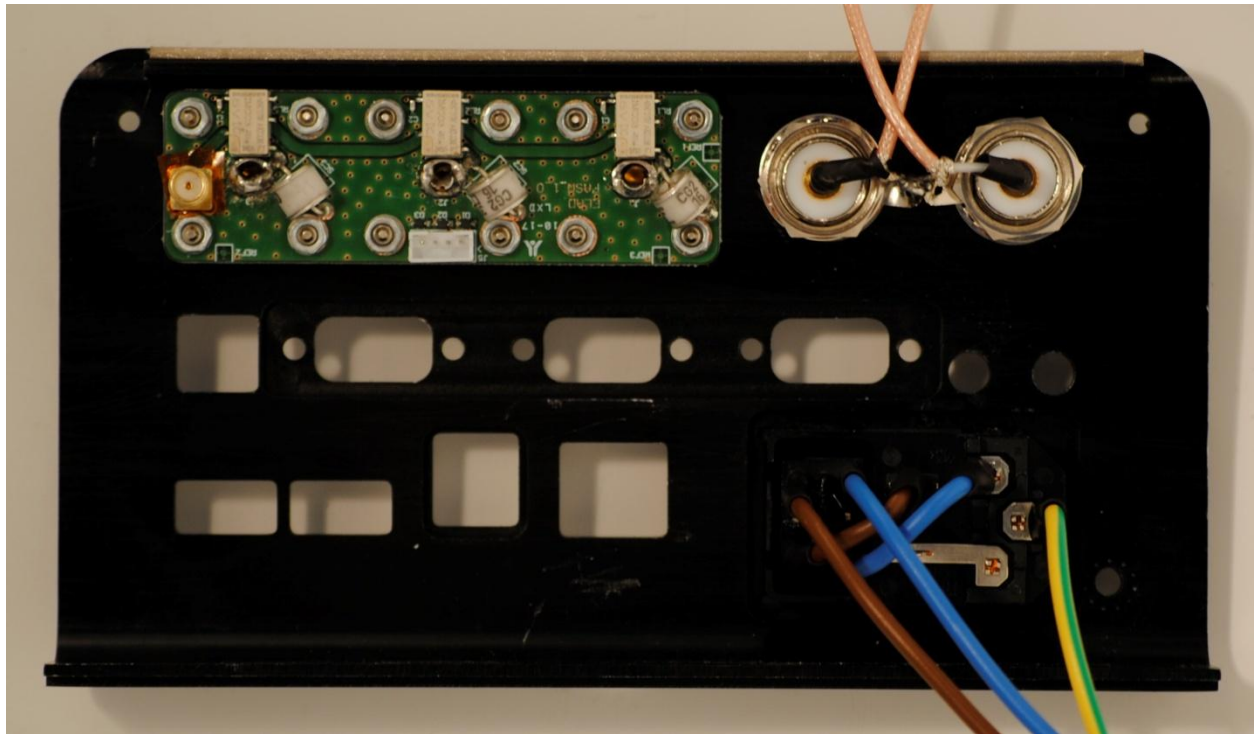


## 18 DUOART60 Power Supply: Bottom View





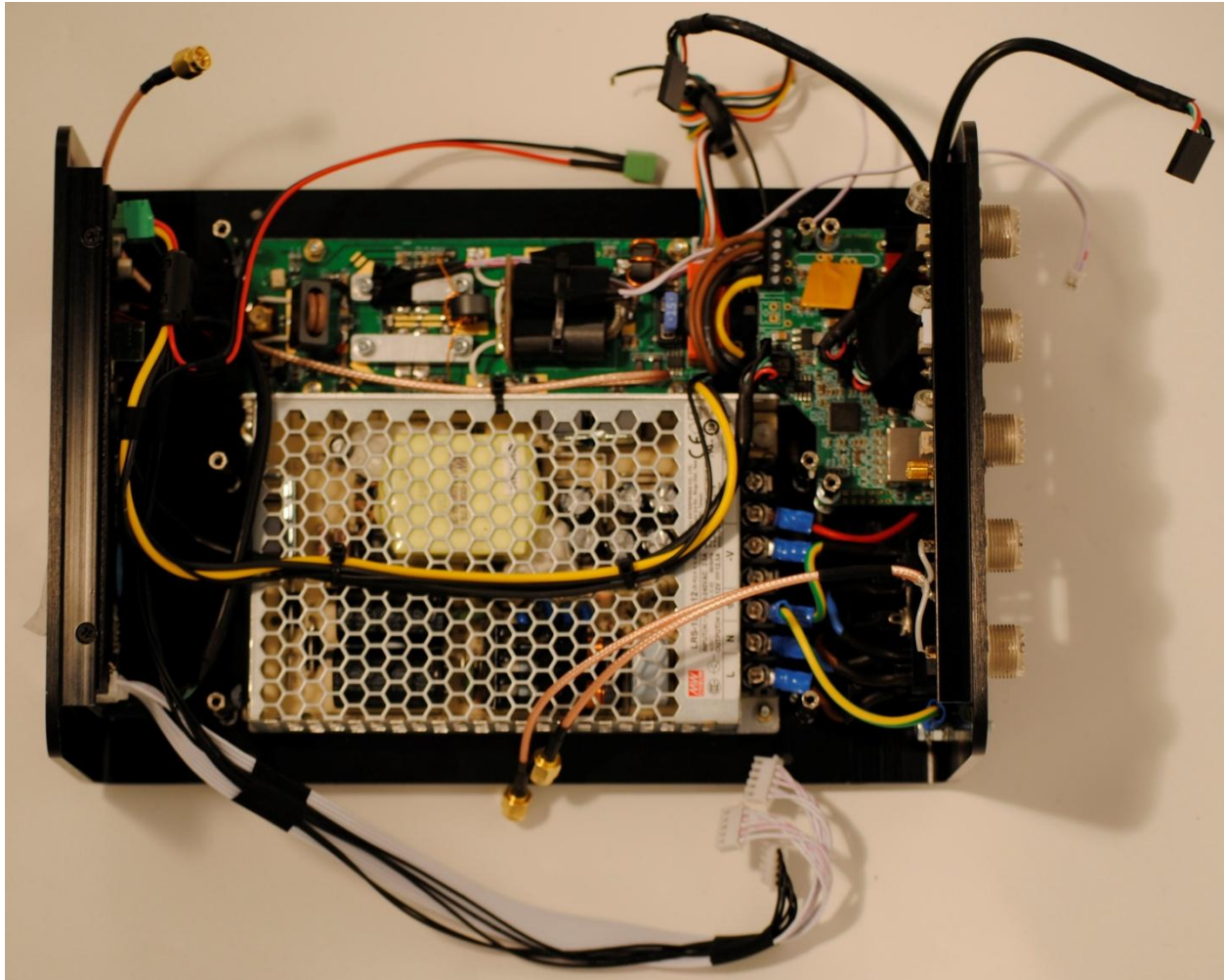
## 19 DUOART60 Rear Panel: Internal View



## 20 DUOART60 Rear Panel: External View



## 21 DUOART60 Intermediate Assembly: Internal View





## 22 DUOART60 Final Assembly: Internal View

