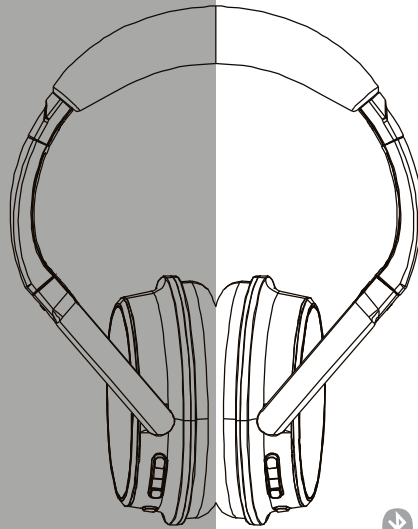


User manual

Bluetooth wireless headset

BT300



 **Bluetooth**[®]
English/Chinese

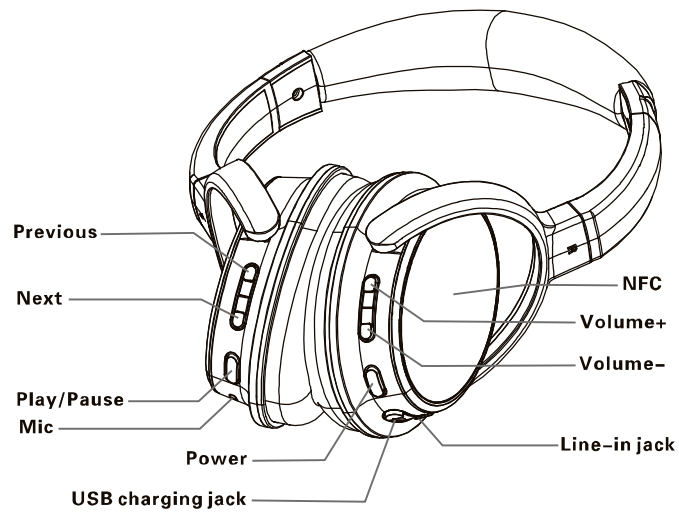
- Please read the user manual in details before using and keep it in good condition.

- User manual
- Warranty card
- Wireless headphone
- USB cable
- 3.5mm audio cable

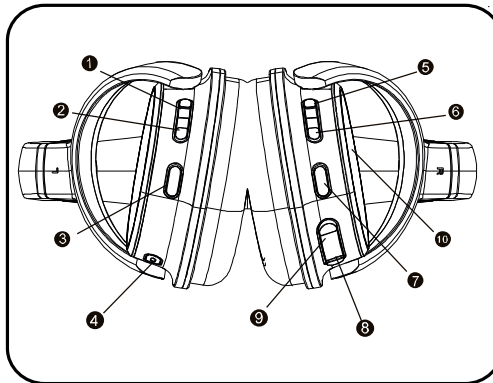


Pls read the user manual in details before using and keep it in good condition

Headphone Function



- ① Volume+
- ② Volume-
- ③ Power (Answer/End up, On/Off)
- ④ Mic
- ⑤ Previous
- ⑥ Pause/Play
- ⑦ Next
- ⑧ Line in jack
- ⑨ USB jack
- ⑩ NFC



Calling Operation

Answering calls

If headset is connected with cell phone to listen to music and a calls is coming to. At this moment, you can hear ringings of cell phone from headset. We can answer calls by pressing POWER button without taking out cell phone.

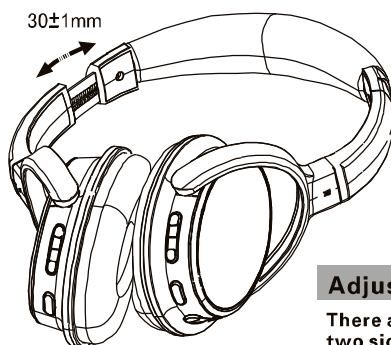
End up calls

Method 1: Press the POWER button to end up calls;
Method 2: End up calls on the cell phone.

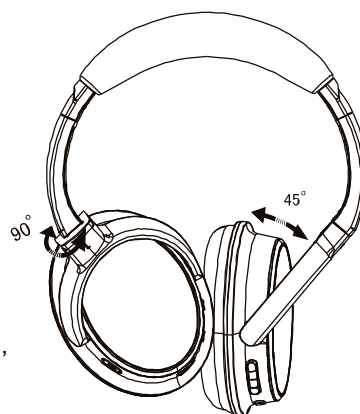
Music/Calls switch

Listening to music by connecting between cell phone and headset, here is coming calls and music will be paused. Headset will switch from music mode to calls mode. Music will be played again once ending up calls.

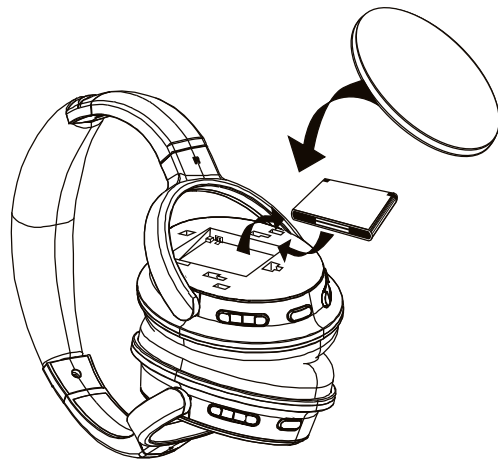
Notice: Pls press POWER button once to answer or end up calls, not hold and press the button.

**Adjustable headband**

There are adjustable headband at the two sides of headphone to adjust the length to enjoy music better.

**Rotary function**

45°-90° running freely and it's easy to carry and store.



Detachable lithium battery

- Open the right decoration piece of the headphone (hold the decoration piece and push up) and take out the lithium battery. When it is full of power by charging,put the battery into the headphone.
- Different charging methods can be decided by clients according to different situation.Also can be charged by the Universal Charger.

★ LED indicator of headphone

OPERATION/STATUS	LED INDICATOR STATUS	OPERATION METHOD/RESULT
Power on	Blue light glittering	Press POWER button until blue light is on and glittering
Power on/Matching	Red/blue light glittering in turn	Enter into pairing mode after 1s power on status
Power off	Red light hold on and extinguish	Press POWER button until red light hold on and extinguish
Charing indicator	Red light hold on	Connecting PC and headset by USB cable, red light is glittering and hold on
Finishing charging	Red light off and blue light hold on	Red light is extinguished and blue light hold on
Successfully paired	Blue light glittering	Blue light is glittering once per 5s after successfully pairing
Coming calls	Blue light glittering quickly	Blue light is glittering quickly when a call is coming. Ringings come from headset and press the POWER button once to answer calls
Calling	Blue light glittering	Blue light is glittering once per 5s

★ Pairing procedures between headset and cell phone

The procedures are as below and only for reference because of different cell phones, different procedures. It may lead to some minor different operation situation and procedures.

Step1: Enter into the cell phone menu and look for the bluetooth item

Step2: Open the cell phone bluetooth function

Step3: Hold and press POWER button until red and blue light is glittering in turn under the status of power off, it will enter into the pairing mode

Step 4: Cell phone is searching bluetooth device and find this headset' s model No. to pair. It may need code for first time pairing and pls input "0000"

Step 5: After successfully pairing, enjoy music wirelessly from cell phone or answer /make a call by headset

Pairing procedures between NFC headset and NFC cell phone

Step 1: Open cell phone' s NFC item

Step2: The NFC position of cell phone is tightly closed with one of headset. At this moment, the cell phone will show the notice whether is paired with "device name" .Pls choose "YES" and headset will enter into pairing mode from power on status automatically

Step 3: After successfully pairing, cell phone will show the notice "successful pair"

Please make sure that your computer are with the bluetooth function or the related drive installations have done.

Step 1: Download the bluetooth software from the website address: www.bluesoleil.com and install it on your computer.

Step 2: Complete the installation according to the software guide.

Step 3: Restart your computer,there will be a little bluetooth icon on the right corner of the computer.

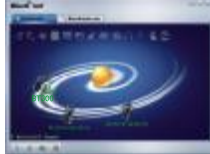



★ Enjoy music with the bluetooth wireless headsets:

Step 1: Insert the USB bluetooth dongle into computer USB port, then the bluetooth icon in the right corner of the computer will be lightened. If your computer is with bluetooth function itself, the USB dongle is no needed and it will be ready once you click the bluetooth icon.



Step 2: Press the power button 5-7s when the headset is off, then the blue light and red light will glitter in turn, which indicates entered into pairing status.



Step 3: Open up the "BlueSoleil" drive and enter into bluetooth interface. Double click the icon of  the drive will search for bluetooth device and the headset icon will appear several seconds later.



Step 4: Double click the headset icon, after the left corner appears "2 service", right click the headset icon and choose connect bluetooth high quality audio, as picture (2) showed. Then pop out a conversation table, as picture (3) showed. Key in the password (0000), then the headset will connect with the bluetooth in computer. Turn on the music player on computer, then you can enjoy the nice stereo music.

★ Wireless online chatting with the bluetooth headsets:

Follow the operation on page eight, right-click headphone icon, choose "connect"→ "Bluetooth Headset Service", then the headphone connected with pc with a red silence mark, last press power button 30ms to remove silence mark. And now you can begin voice chat by QQ,MSN, SKYPE ect.

**Attention:**

If you have connected both the bluetooth high quality audio and bluetooth monophony headset, the listening effect will be not good and it will be monophony when you listen to music. At this moment, if you would like to enjoy music, it's necessary to disconnect the bluetooth monophony headset and maintain the connect of bluetooth high quality audio, Then the music is stereo and the music quality is quite nice.

Speaker parameter

- Speaker diameter: $\varnothing 10\text{mm}$
- Impedance: $32\ \Omega$
- S.P.L.: 106dB S.P.L. at 1KHz
- Rated power: 20mW
- Aggregate capability: 40mW
- Frequency Response: 20Hz-20,000Hz

Micphone parameter

- Microphone Unit: $\varnothing 4*1.5\text{mm}$
- Microphone directivity: full directivity
- S.P.L.: $-52 \pm 2\text{dB}$
- Impedance: $<2.2\text{K}\ \Omega$
- Frequency Response: 30Hz-16,000Hz
- Operating voltage: 3.0V

Products specification

- Products description: bluetooth wireless headphone
- Bluetooth protocol standards: Bluetooth V3.0+EDR
- Receiver range: 10m / 360°
- Carrier frequency: 2402MHz-2480MHz
- Battery: chargeable lithium-ion polymer battery (3.7V/450mAH)
- Charger power: computer USB interface DC5V;DC5V(500MA); travel charger;DC 5V (500MA)car charger
- Successive working time: about 10 hours;
- Frequency response: 20Hz—20KHz;
- S/N ratio: – 82db;
- Successive working time: 180 hours standby and around 10 hours successive working time

Description of features

- Pure digital decode system ensures full acoustic fidelity and strong bass voice. Support multi-format files.
- High S/N ratio bluetooth audio frequency without any emitter.
- Intelligence power-saving modes and designs/180 hours long standby/lithium battery inside lasts for 8 hours.
- Switch conversation with music player modes automatically/ enjoy the entertainment and communication at the same time.
- Inserting the standard cable into the 3.5mm audio jack on iPhone can not only control the music playing but also the online chatting.

- Attention:**
- 1. The headphone will turn off automatically for unsuccessful matching or when there is no music to play.*
 - 2. The headphone has low-voltage sound when the electricity is not enough and it will turn off automatically if the charging is not prompt.*

Attention

Please correctly wear the headphone to ensure the best listening effects. "L" on the headphone stands for left and "R" stands for right. Do not detach the hardware of the headphone. Using the dry and soft cloth to clean the product.

The following preventative measures can be taken:

1. Ensure the first time for battery charge is not less than 4 hours. If it will not be used for a long time, please ensure there is enough electricity in the battery.
2. Ensure the battery is the original one and do not change another one.
3. Do not place the headphone under the temperature which is equal or higher than 45.
4. Do not detach the product unless you are a professional in this field.

FCC Caution: Any changes or modifications not expressly approved by the party responsible for compliance could void the user's authority to operate this equipment. This device complies with Part 15 of the FCC Rules. Operation is subject to the following two conditions: (1) This device may not cause harmful interference, and (2) this device must accept any interference received, including interference that may cause undesired operation. This device and its antenna(s) must not be co-located or operating in conjunction with any other antenna or transmitter.

NOTE: This equipment has been tested and found to comply with the limits for a Class B digital device, pursuant to Part 15 of the FCC Rules. These limits are designed to provide reasonable protection against harmful interference in a residential installation. This equipment generates, uses and can radiate radio frequency energy and, if not installed and used in accordance with the instructions, may cause harmful interference to radio communications. However, there is no guarantee that interference will not occur in a particular installation. If this equipment does cause harmful interference to radio or television reception, which can be determined by turning the equipment off and on, the user is encouraged to try to correct the interference by one or more of the following measures:

- Reorient or relocate the receiving antenna.
- Increase the separation between the equipment and **receiver**.
- Connect the equipment into an outlet on a circuit different from that to which the receiver is connected.
- Consult the dealer or an experienced radio/TV technician for help.