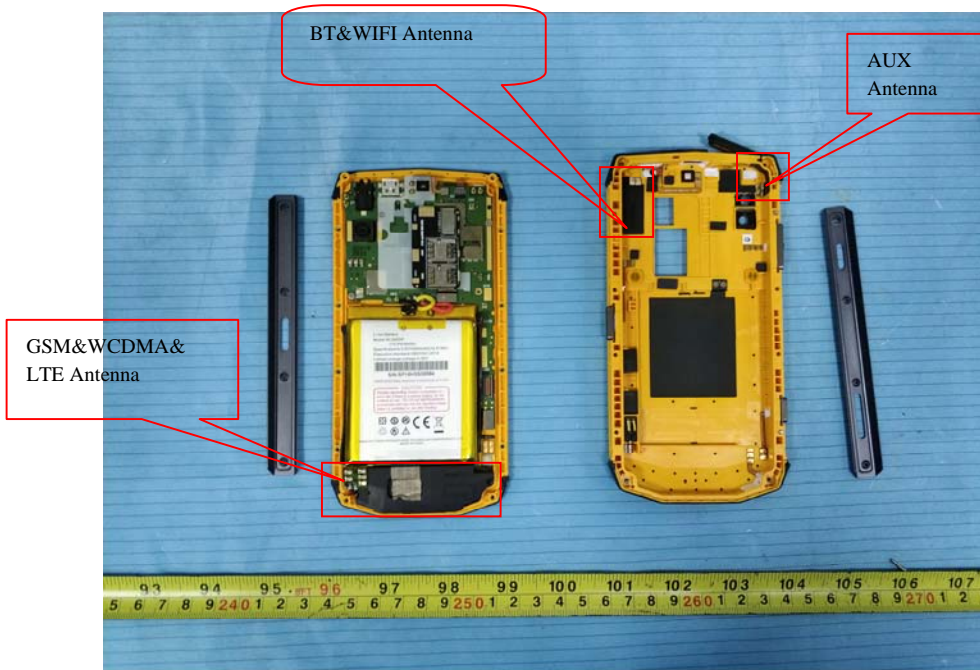


EXHIBIT C - EUT INTERNAL PHOTOGRAPHS

EUT – Cover off View 1



EUT – Cover off View 2



EUT – Cover off View 3



EUT – Cover off View 4



EUT – Cover off View 5



EUT – Main Board 1 Top View



EUT –Main Board 1 Top Shielding off View



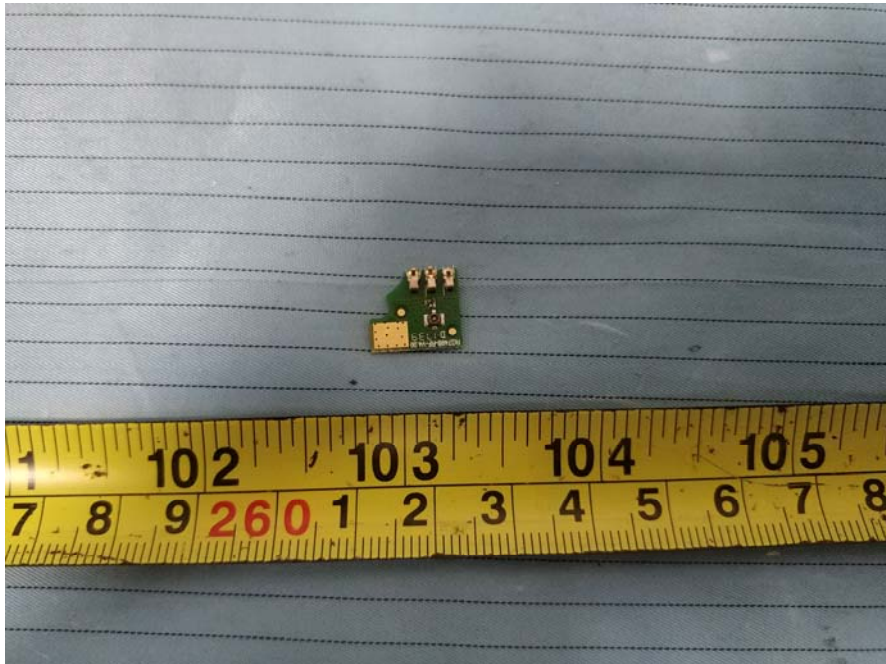
EUT –Main Board 1 Bottom View



EUT –Main Board 1 Bottom Shielding off View



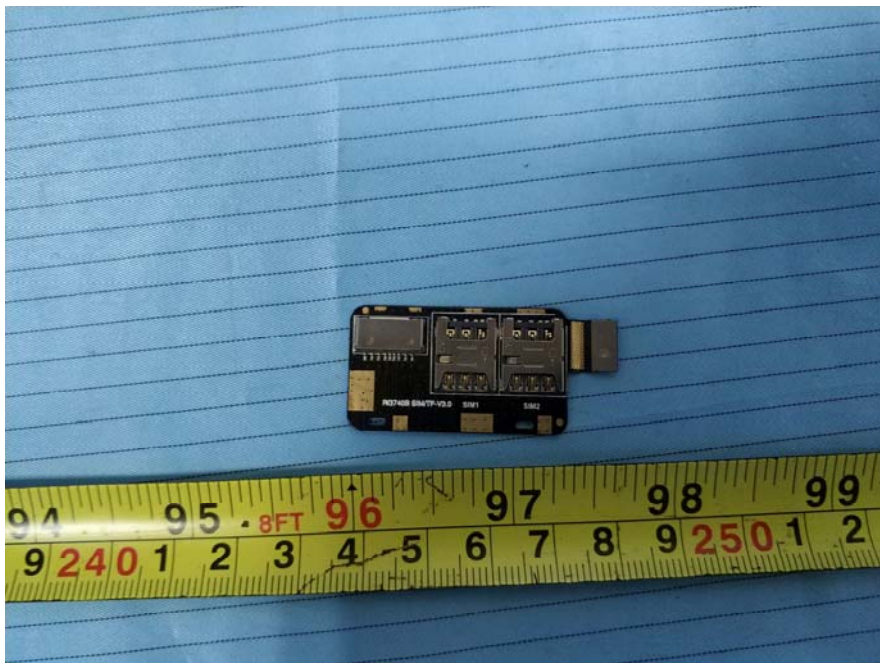
EUT – Main Board 2 Top View



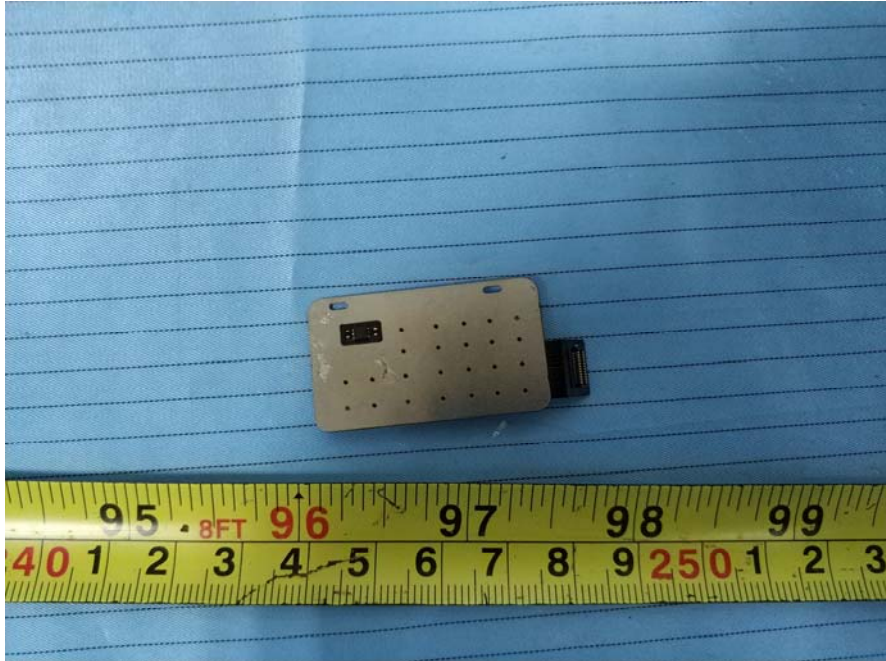
EUT –Main Board 2 Bottom View



EUT – Main Board 3 Top View



EUT – Main Board 3 Bottom View



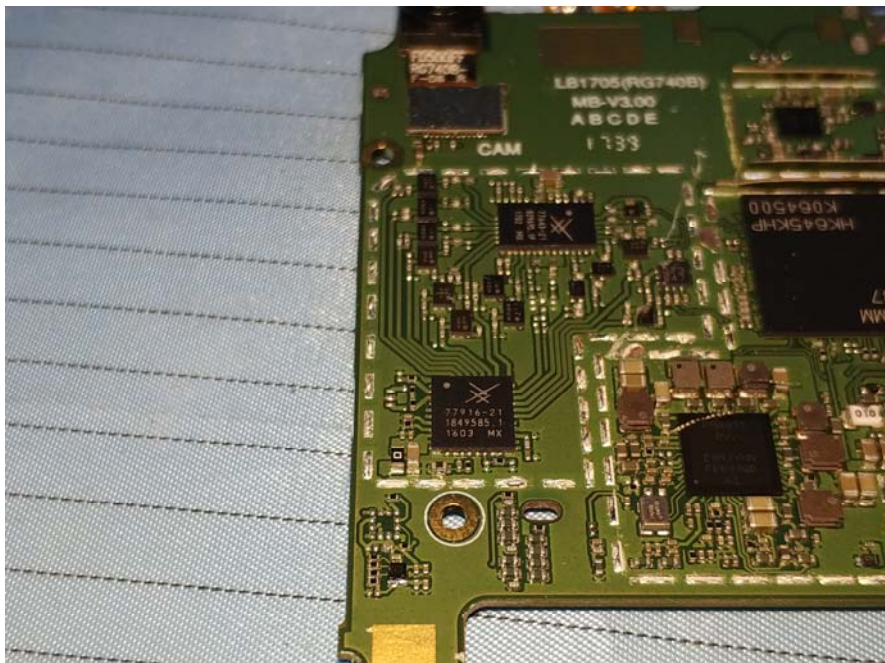
EUT – IC Chip View 1



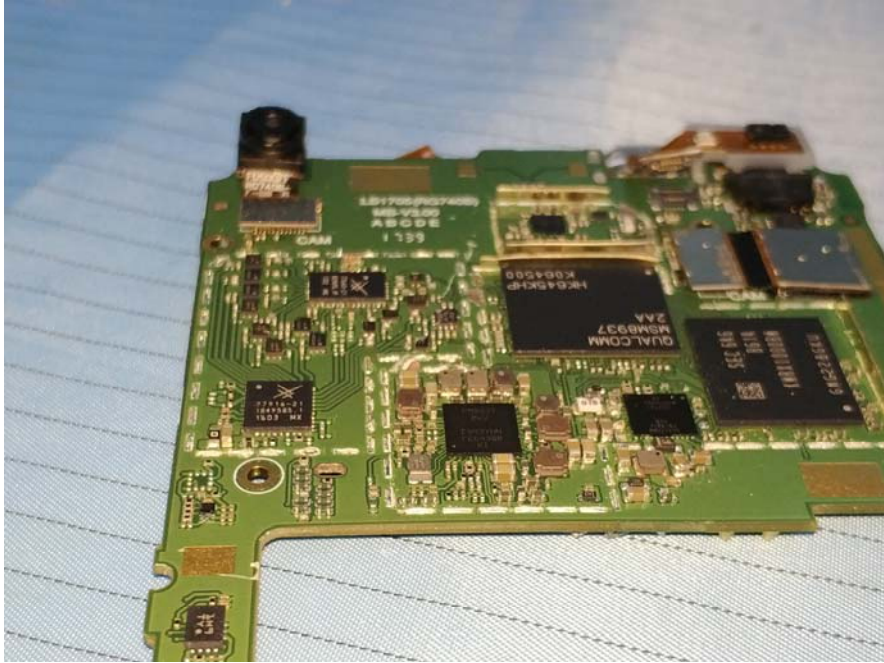
EUT – IC Chip View 2



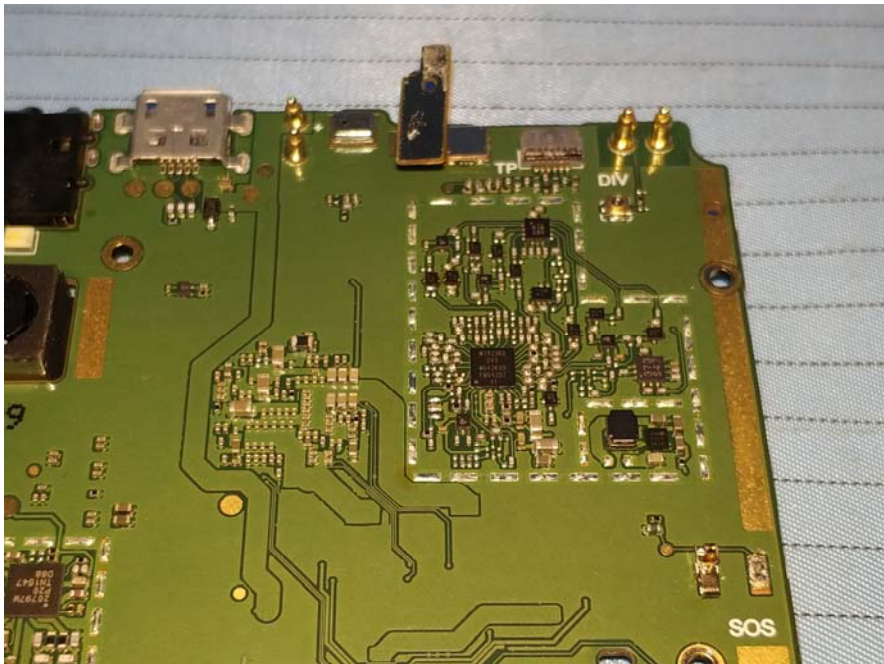
EUT – IC Chip View 3



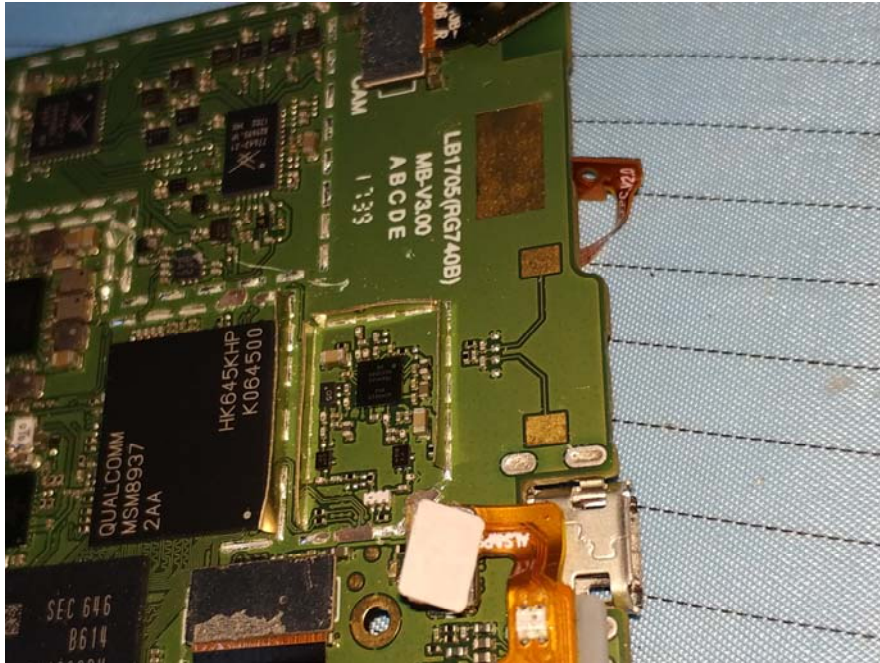
EUT – IC Chip View 4



EUT – IC Chip View 5



EUT – IC Chip View 6



EUT – Battery Front View



EUT – Battery Rear View



EUT – Battery Label View

⊕ ⊖

BPIS520.1A
(1ICP4/54/68-2)

S/N: RF18B1K00001



i.safe MOBILE GmbH
i_Park Tauberfranken 10
97922 Lauda-Koenigshofen, Germany

Li-Ion Battery 3.8V / 3600mAh / 13.68 Wh
Limited Charge Voltage (4.35V)
P/N:52010020

CE 2004

WARNING
Use only with **IS520.1** series!
May explode if disposed of in fire!
Dispose of properly!
See manual for more safety instructions!

ROOFER TECHNOLOGY (SHENZHEN) CO.,LTD
MADE IN CHINA

