



**SGS-CSTC Standards Technical Services Co., Ltd.
Shenzhen Branch**

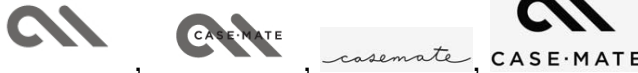
No. 1 Workshop, M-10, Middle Section, Science & Technology Park,
Shenzhen, China 518057

Telephone: +86 (0) 755 2601 2053
Fax: +86 (0) 755 2671 0594
Email: ee.shenzhen@sgs.com

Report No.: SZEM180100045402
Page: 1 of 11

Human Exposure Report

Application No.: SZEM1801000454CR
Applicant/ Manufacturer: Case-Mate, Inc.
Address of Applicant/ Manufacturer: 7000 Central Pkwy., Ste. 1050, Atlanta, Georgia 30328-4590, United States
Factory: Case-Mate, Inc.
Address of Factory: 7000 Central Pkwy., Ste. 1050, Atlanta, Georgia 30328-4590, United States
Equipment Under Test (EUT):
EUT Name: Wireless Power Pad with Stand
Model No.: CM037042, CM037040 ♣
 ♣ Please refer to section 3.2 of this report which indicates which model was actually tested and which were electrically identical.
Trade Mark:



FCC ID: 2AAC4-CMPOWERPAD
Standards: 47 CFR PART 1, Subpart I, Section 1.1310
Date of Receipt: 2018-01-16
Date of Test: 2018-01-23 to 2018-02-06
Date of Issue: 2018-02-08

Test Result :	Pass*
----------------------	--------------

* This report is just a test result base on the test method and limit requirement shown in the form on the second page. The report must not be used by the client to claim product certification, approval, or endorsement by NVLAP, NIST, or any agency of the federal government.



Keny Xu
EMC Laboratory Manager

The manufacturer should ensure that all products in series production are in conformity with the product sample detailed in this report. If the product in this report is used in any configuration other than that detailed in the report, the manufacturer must ensure the new system complies with all relevant standards. Any mention of SGS International Electrical Approvals or testing done by SGS International Electrical Approvals in connection with, distribution or use of the product described in this report must be approved by SGS International Electrical Approvals in writing.

This document is issued by the Company subject to its General Conditions of Service printed overleaf, available on request or accessible at <http://www.sgs.com/en/Terms-and-Conditions.aspx> and, for electronic format documents, subject to Terms and Conditions for Electronic Documents at <http://www.sgs.com/en/Terms-and-Conditions/Terms-e-Document.aspx>. Attention is drawn to the limitation of liability, indemnification and jurisdiction issues defined therein. Any holder of this document is advised that information contained hereon reflects the Company's findings at the time of its intervention only and within the limits of Client's instructions, if any. The Company's sole responsibility is to its Client and this document does not exonerate parties to a transaction from exercising all their rights and obligations under the transaction documents. This document cannot be reproduced except in full, without prior written approval of the Company. Any unauthorized alteration, forgery or falsification of the content or appearance of this document is unlawful and offenders may be prosecuted to the fullest extent of the law. Unless otherwise stated the results shown in this test report refer only to the sample(s) tested and such sample(s) are retained for 30 days only.



2 Contents

	Page
1 COVER PAGE	1
2 CONTENTS	2
3 GENERAL INFORMATION	3
3.1 DETAILS OF E.U.T.	3
3.2 DESCRIPTION OF SUPPORT UNITS.....	3
3.3 TEST LOCATION	4
3.4 TEST FACILITY	4
3.5 DEVIATION FROM STANDARDS.....	4
3.6 ABNORMALITIES FROM STANDARD CONDITIONS	4
4 EQUIPMENTS USED DURING TEST	5
5 TEST RESULTS	6
5.1 RF EXPOSURE TEST	6
5.1.1 <i>E.U.T. Operation</i>	6
<i>Operating Environment:</i>	6
<i>EUT Operation:</i>	6
5.1.2 <i>Measurement Data</i>	7
6 PHOTOGRAPHS	9
6.1 TEST PHOTOS	9-11



3 General Information

3.1 Details of E.U.T.

Power supply: INPUT: DC 5V/2A; DC 9V/2A
OUTPUT: DC 5V/1A; DC 9V/1.1A

Operation frequency: 117.6-170.2 kHz

Antenna type: Inductive Loop Coil Antenna

Remark: Tests were conducted in both loads and the worst case (DC 9V/1.1A) is reported only.

3.2 Description of Support Units

The EUT has been tested with associated equipment below.

Description	Manufacturer	Model No.	Serial No.
cement load	provided by client	DC 5V/1A	N/A
mobile phone	Samsung(provided by client)	Galaxy S7 edge	N/A
Power Supply	provided by client	DBS15Q	N/A

Remark:

Model No.: CM037042;CM037040

Only the model CM037042 was tested, since the electrical circuit design, layout, components used, internal wiring and functions were identical for all the above models, with only difference on housing color.



3.3 Test Location

All tests were performed at:

SGS-CSTC Standards Technical Services Co., Ltd., Shenzhen Branch E&E Lab,
No. 1 Workshop, M-10, Middle section, Science & Technology Park, Shenzhen, Guangdong, China
518057.

Tel: +86 755 2601 2053 Fax: +86 755 2671 0594

No tests were sub-contracted.

3.4 Test Facility

The test facility is recognized, certified, or accredited by the following organizations:

- **CNAS (No. CNAS L2929)**

CNAS has accredited SGS-CSTC Standards Technical Services Co., Ltd. Shenzhen Branch EMC Lab to ISO/IEC 17025:2005 General Requirements for the Competence of Testing and Calibration Laboratories (CNAS-CL01 Accreditation Criteria for the Competence of Testing and Calibration Laboratories) for the competence in the field of testing.

- **A2LA (Certificate No. 3816.01)**

SGS-CSTC Standards Technical Services Co., Ltd., Shenzhen EMC Laboratory is accredited by the American Association for Laboratory Accreditation (A2LA). Certificate No. 3816.01.

- **VCCI**

The 10m Semi-anechoic chamber and Shielded Room of SGS-CSTC Standards Technical Services Co., Ltd. have been registered in accordance with the Regulations for Voluntary Control Measures with Registration No.: G-823, R-4188, T-1153 and C-2383 respectively.

- **FCC – Registration No.: 556682**

SGS-CSTC Standards Technical Services Co., Ltd., Shenzhen EMC Laboratory has been registered and fully described in a report filed with the (FCC) Federal Communications Commission. The acceptance letter from the FCC is maintained in our files. Registration No.: 556682.

- **Industry Canada (IC)**

The 10m Semi-anechoic chambers of SGS-CSTC Standards Technical Services Co., Ltd. Shenzhen Branch EMC Lab has been registered by Certification and Engineering Bureau of Industry Canada for radio equipment testing with Registration No.: 4620C-3.

3.5 Deviation from Standards

None.

3.6 Abnormalities from Standard Conditions

None.



4 Equipments Used during Test

Item	Test Equipment	Manufacturer	Model No.	Inventory No.	Cal. Due date (yyyy-mm-dd)
1	3m Semi-Anechoic Chamber	ETS-LINDGREN	N/A	SEL0017	2018-06-10
2	Electric Field Meter	Schaffner	EMC20	EMC068	2018-03-27



5 Test Results

5.1 RF Exposure test

Test Requirement: 47 CFR PART 1, Subpart I, Section 1.1310

Measurement Distance: 10cm

Limit:

Frequency range (MHz)	Electric field strength (V/m)	Magnetic field strength (A/m)	Power density (mW/cm ²)	Averaging time (minutes)
(A) Limits for Occupational/Controlled Exposures				
0.3-3.0	614	1.63	*(100)	6
3.0-30	1842/f	4.89/f	*(900/f ²)	6
30-300	61.4	0.163	1.0	6
300-1500	/	/	f/300	6
1500-100,000	/	/	5	6
(B) Limits for General Population/Uncontrolled Exposure				
0.3-1.34	614	1.63	*(100)	30
1.34-30	824/f	2.19/f	*(180/f ²)	30
30-300	27.5	0.073	0.2	30
300-1500	/	/	f/1500	30
1500-100,000	/	/	1.0	30
F=frequency in MHz *=Plane-wave equivalent power density RF exposure compliance will need to be determined with respect to 1.1307(c) and (d) of the FCC rules. The emissions should be within the limits at 300kHz in Table 1 of 1.1310(use the 300kHz limits for 150kHz:614V/m,1.63A/m).				

5.1.1 E.U.T. Operation

Operating Environment:

Temperature: 24.0 °C Humidity: 52% RH Atmospheric Pressure: 1015 mbar

EUT Operation:

This device has been tested the worst status of full load and the device has been tested with mobile phone at zero charge, intermediate charge, and full charge.



5.1.2 Measurement Data

1: Output Voltage=DC 9V; The max output power =10W;Calculation of resistor value=8.2Ω

Electric Field Emissions

Operation frequency	Test Position	Test Distance (cm)	Probe Measure Result (V/m)	Limit (V/m)	30% Limit (V/m)
117.6-170.2 kHz	Side 1	10	4.91	614	184.2
	Side 2	10	4.82	614	184.2
	Side 3	10	5.46	614	184.2
	Side 4	10	4.84	614	184.2
	Top	10	6.31	614	184.2

Magnetic Field Emissions

Operation frequency	Test Position	Test Distance (cm)	Probe Measure Result (A/m)	Limit (A/m)	30% Limit (A/m)
117.6-170.2 kHz	Side 1	10	0.0779	1.63	0.489
	Side 2	10	0.0866	1.63	0.489
	Side 3	10	0.0831	1.63	0.489
	Side 4	10	0.0871	1.63	0.489
	Top	10	0.1450	1.63	0.489



4: Mobile phone has been charge at zero charge, intermediate charge, and full charge.

Electric Field Emissions

Operation frequency	Test Position	Test Distance (cm)	Probe Measure Result(V/m)			Limit(V/m)/ 30%Limit(V/m)
			zero charge	intermediate charge	full charge	
117.6-170.2 kHz	Side 1	10	4.61	4.86	3.69	614/184.2
	Side 2	10	4.52	4.89	3.30	614/184.2
	Side 3	10	4.36	5.67	4.57	614/184.2
	Side 4	10	3.97	4.20	3.47	614/184.2
	Top	10	5.70	5.57	5.23	614/184.2

Magnetic Field Emissions

Operation frequency	Test Position	Test Distance (cm)	Probe Measure Result(A/m)			Limit(A/m)/ 30%Limit(A/m)
			zero charge	intermediate charge	full charge	
117.6-170.2 kHz	Side 1	10	0.0215	0.0188	0.0186	1.63/0.489
	Side 2	10	0.0222	0.0167	0.0150	1.63/0.489
	Side 3	10	0.0265	0.0155	0.0195	1.63/0.489
	Side 4	10	0.0173	0.0142	0.0186	1.63/0.489
	Top	10	0.0337	0.0265	0.0323	1.63/0.489

6 Photographs

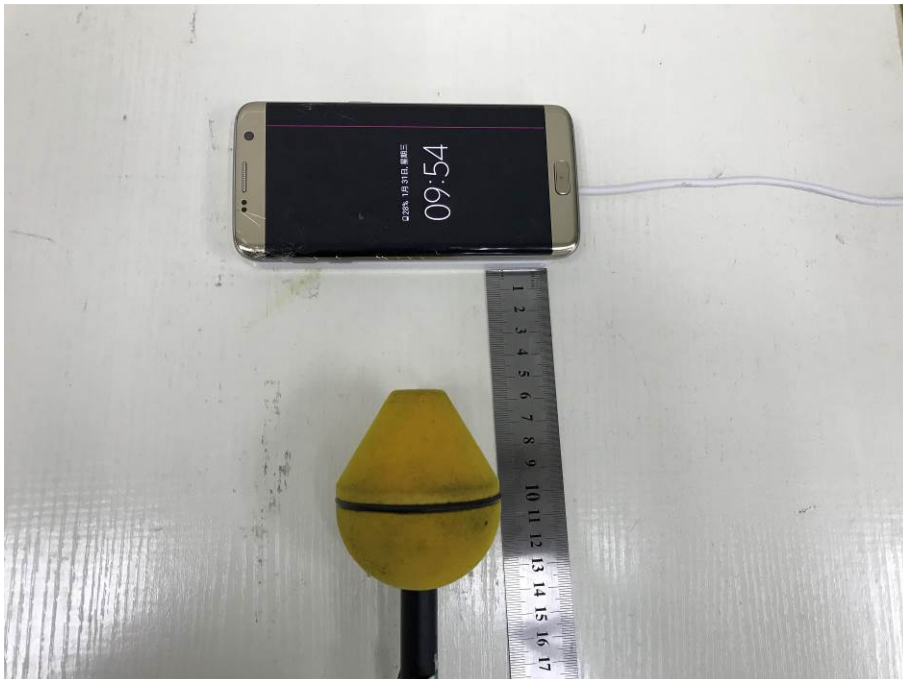
6.1 Test photos

Test with mobile phone

Side 1



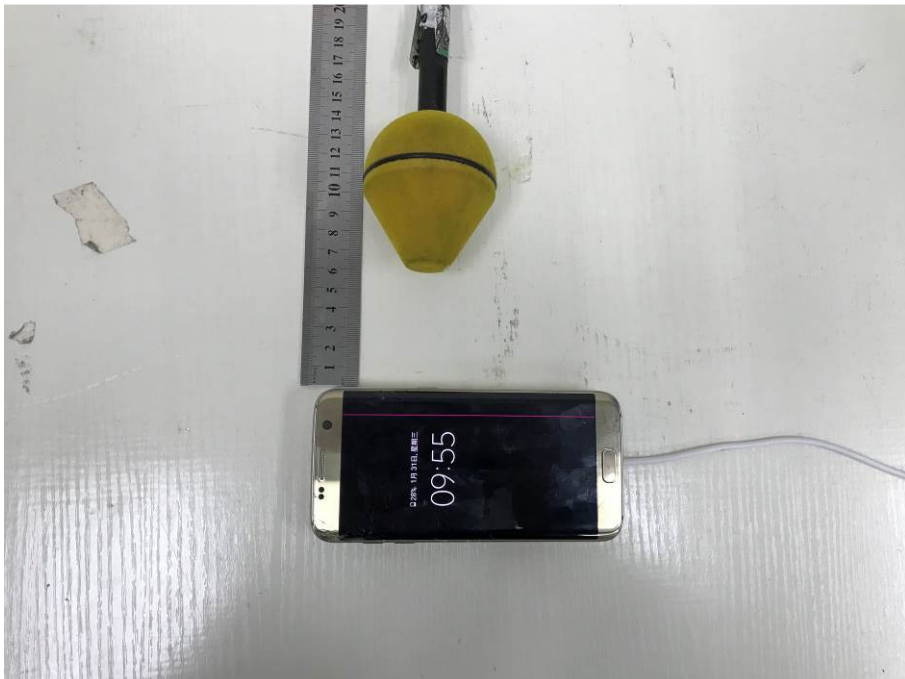
Side 2



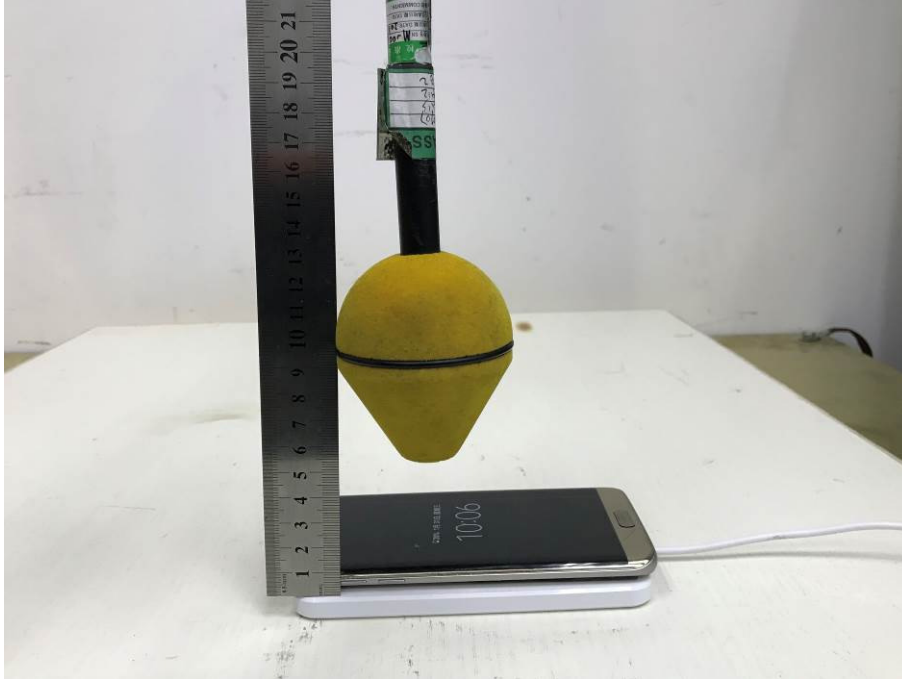
Side 3



Side 4



Top



- End of the Report -