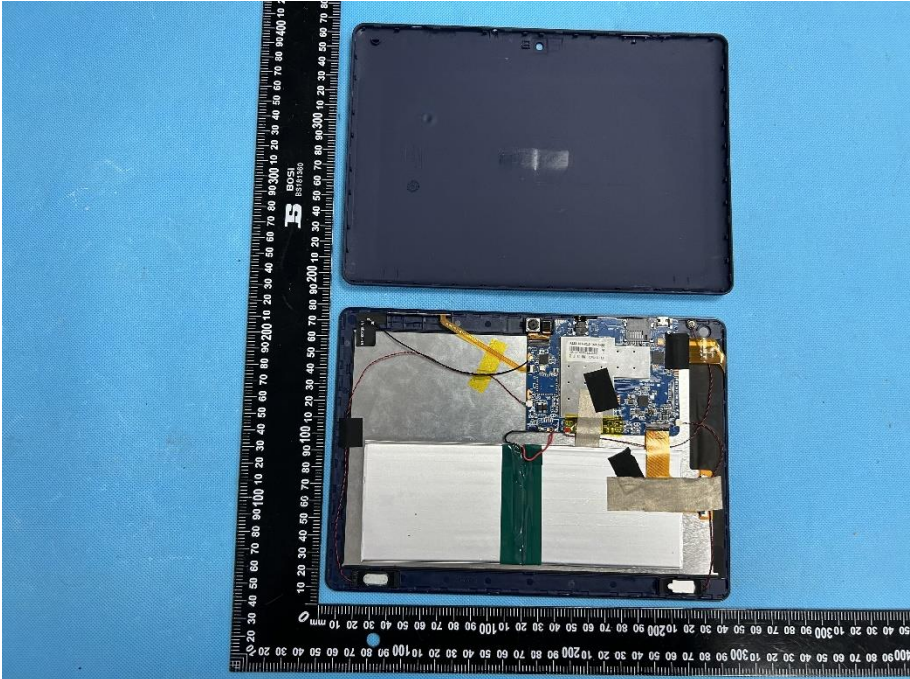
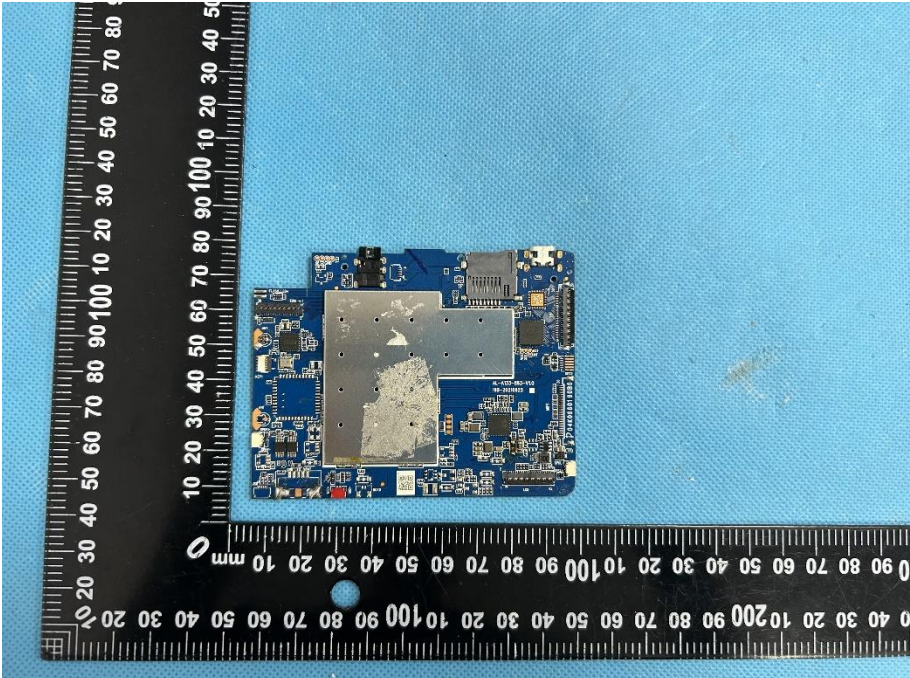
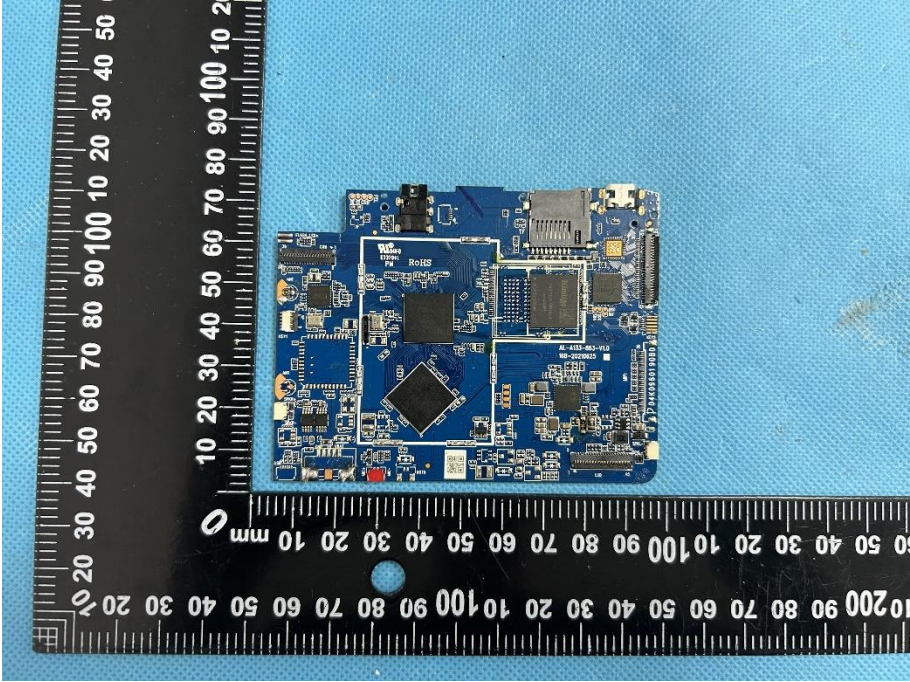
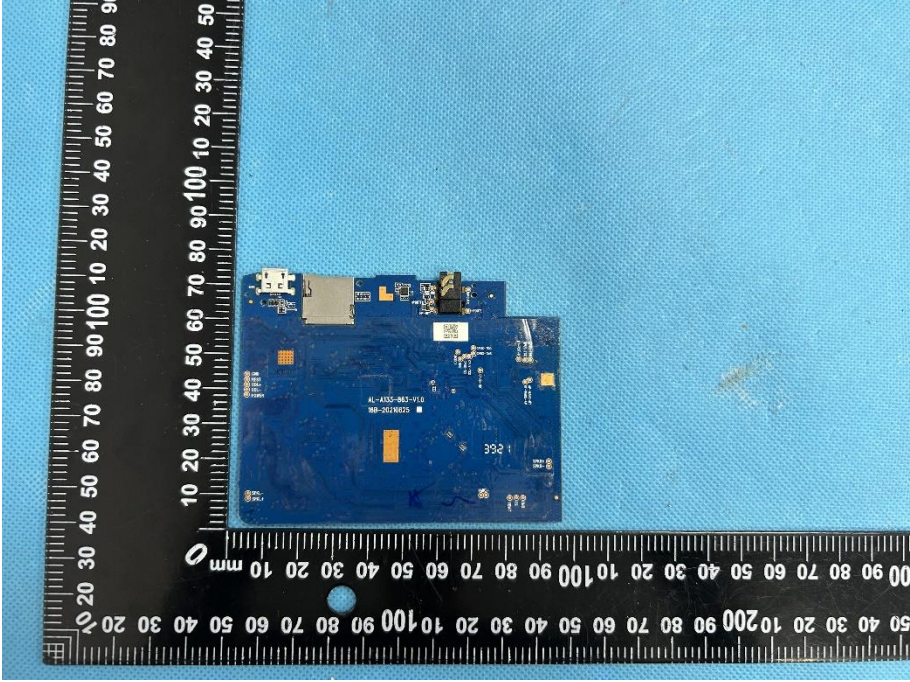
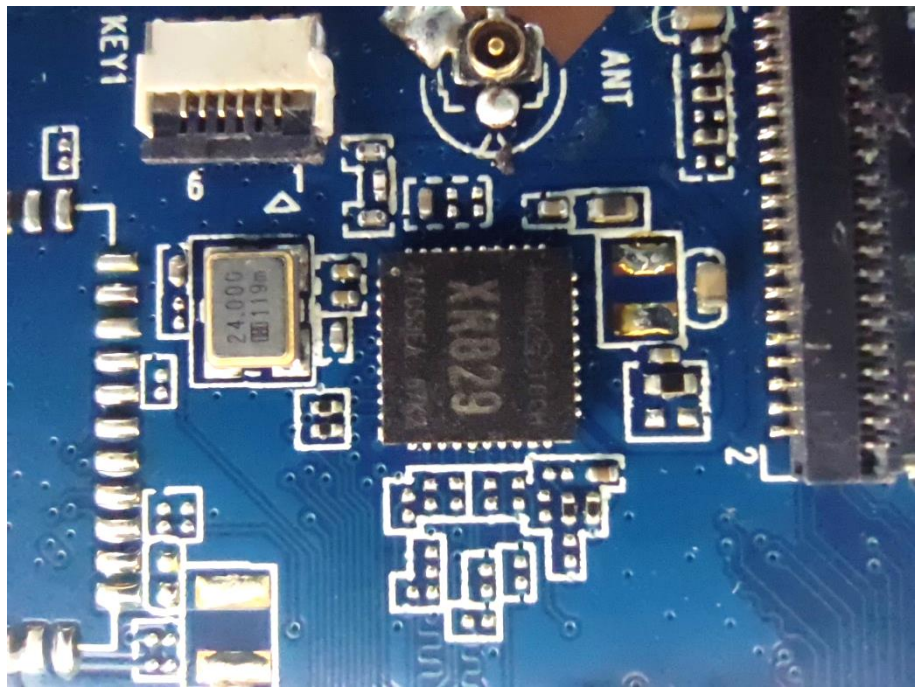


EXHIBIT 3 - EUT INTERNAL PHOTOGRAPHS

<p>EUT Housing and Board View 1</p>	 A photograph showing the internal components of an EUT (End User Terminal) housing. The top part of the image shows the dark, rectangular back cover of the device. Below it, the internal board is visible, featuring a large white battery pack, a blue printed circuit board (PCB) with various electronic components, and a silver metal shield. A black ruler with white markings is placed vertically to the left of the board for scale, showing measurements in millimeters and centimeters.
<p>Solder Board-Component View 1</p>	 A close-up photograph of a blue PCB component, likely a solder board, showing various electronic components and a large silver metal shield. A black ruler with white markings is placed vertically to the left of the component for scale, showing measurements in millimeters and centimeters.

<p>Solder Board-Component View 2</p>	 <p>A photograph showing the top view of a blue PCB component. The component is rectangular and populated with various electronic components, including a large square chip in the center, several smaller chips, and surface-mount components. A black ruler with white markings is placed horizontally below the component, showing measurements in millimeters. The ruler is oriented vertically in the image, with the 0 mark at the top and the 100 mm mark at the bottom. The component is placed on a light blue textured surface.</p>
<p>Solder Board-Component View 3</p>	 <p>A photograph showing the bottom view of the same blue PCB component. The component is rectangular and populated with various electronic components, including a large square chip in the center, several smaller chips, and surface-mount components. A black ruler with white markings is placed horizontally below the component, showing measurements in millimeters. The ruler is oriented vertically in the image, with the 0 mark at the top and the 100 mm mark at the bottom. The component is placed on a light blue textured surface.</p>

Solder
Board-Component
View 4



Solder
Board-Component
View 5

