
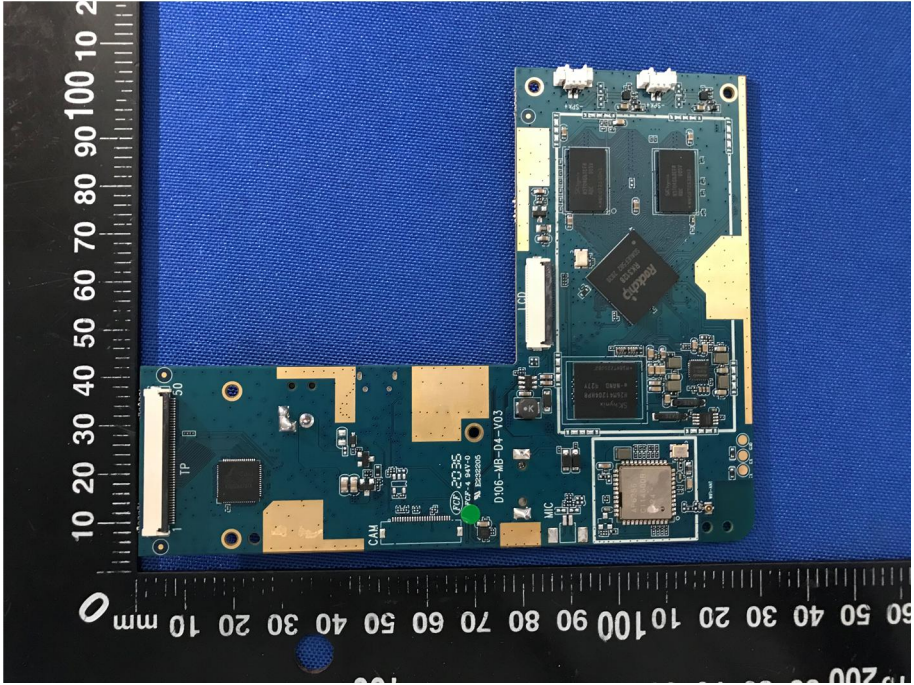
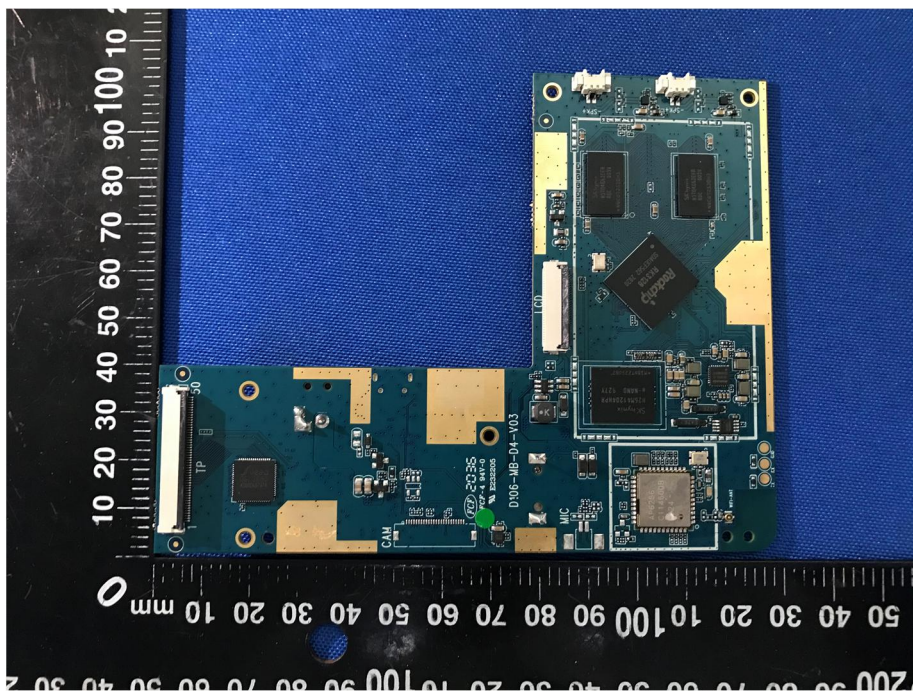


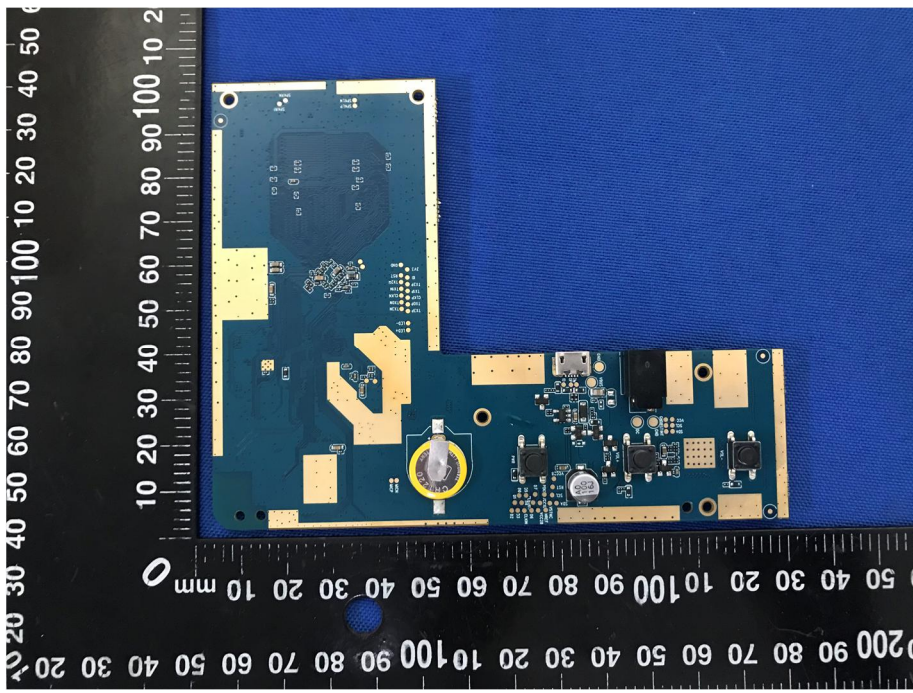
EXHIBIT 3 - EUT INTERNAL PHOTOGRAPHS

<p>EUT Housing and Board View 1</p>	 A photograph showing the internal components of an EUT (End User Terminal) housed in a black plastic casing. The top half of the casing is open, revealing a white rectangular component, possibly a display or sensor, with a black strip and a yellow adhesive tape attached. The bottom half of the casing contains a green printed circuit board (PCB) populated with various electronic components, including a large black chip, a battery, and other smaller components. A black ruler is placed vertically on the left side of the assembly for scale, with markings in millimeters and centimeters.
<p>Solder Board-Component View 1</p>	 A close-up photograph of the green PCB from the previous view. The board is populated with several integrated circuits (ICs), including a large black chip with "MCP602" visible, and other smaller components like capacitors and resistors. A black ruler is placed vertically on the left side of the board for scale, with markings in millimeters and centimeters.

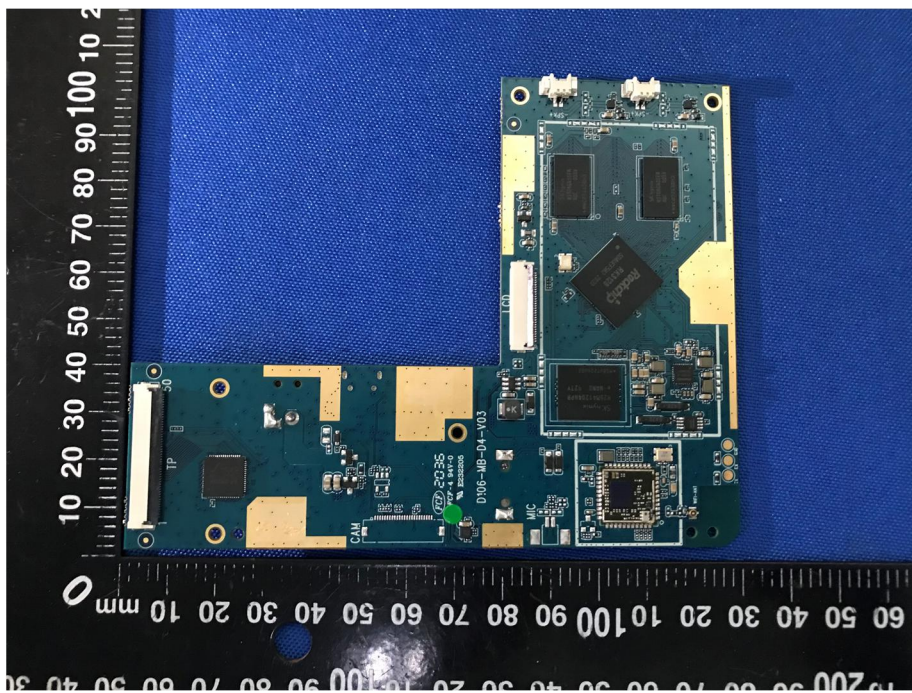
**Solder
Board-Component View
2**



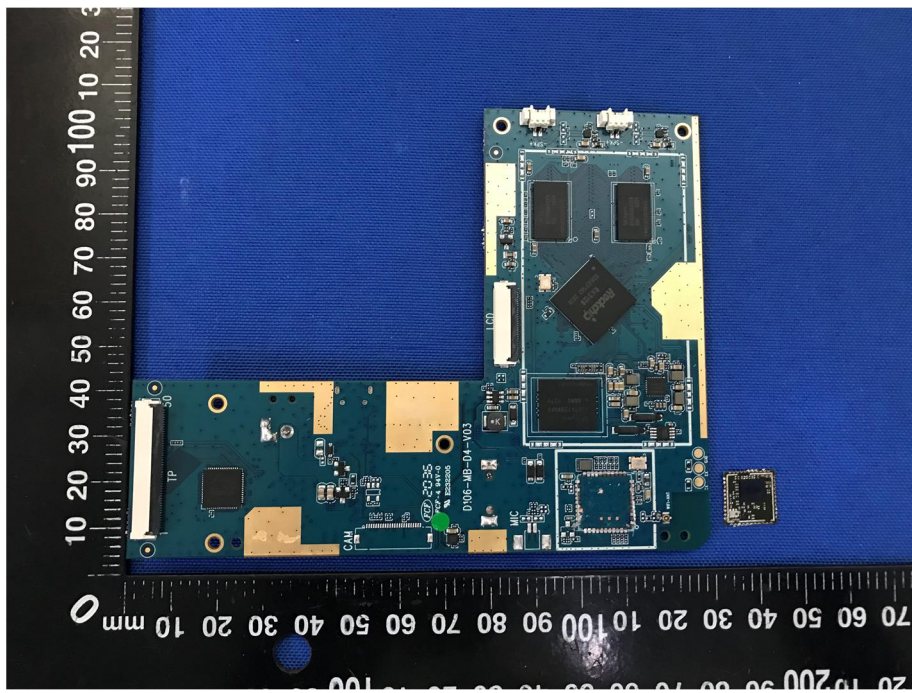
**Solder
Board-Component View
3**



**Solder
Board-Component View
4**



**Solder
Board-Component View
5**



<p style="text-align: center;">Solder Board-Component View 6</p>	
<p style="text-align: center;">Solder Board-Component View 7</p>	

Antenna View

