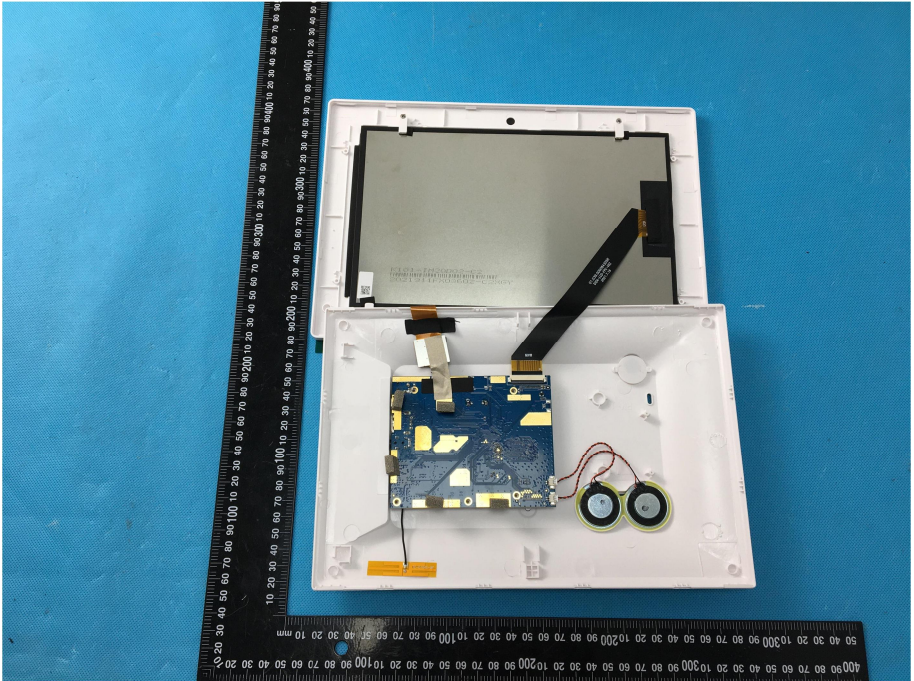
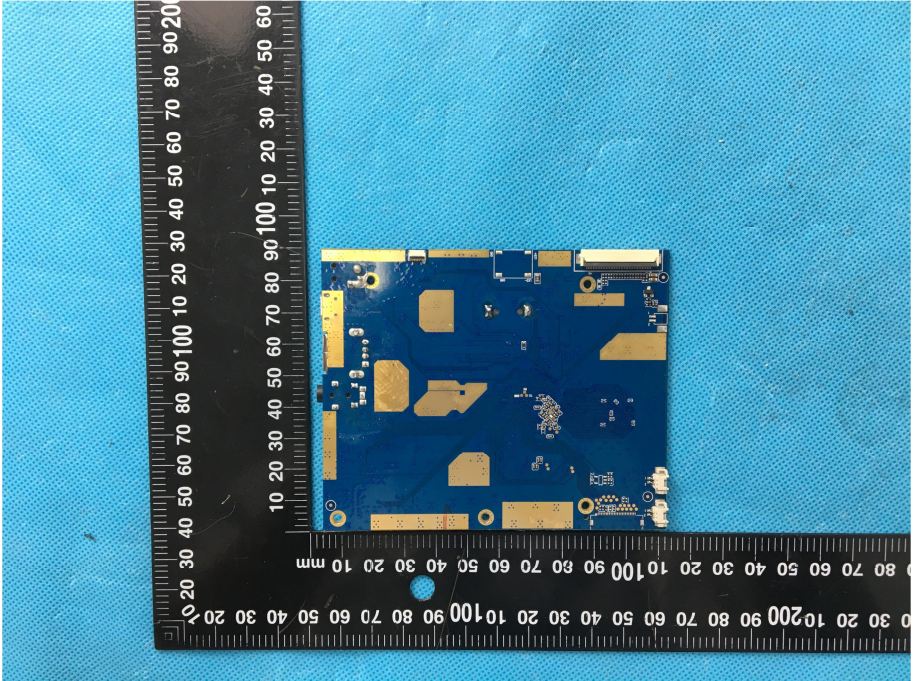
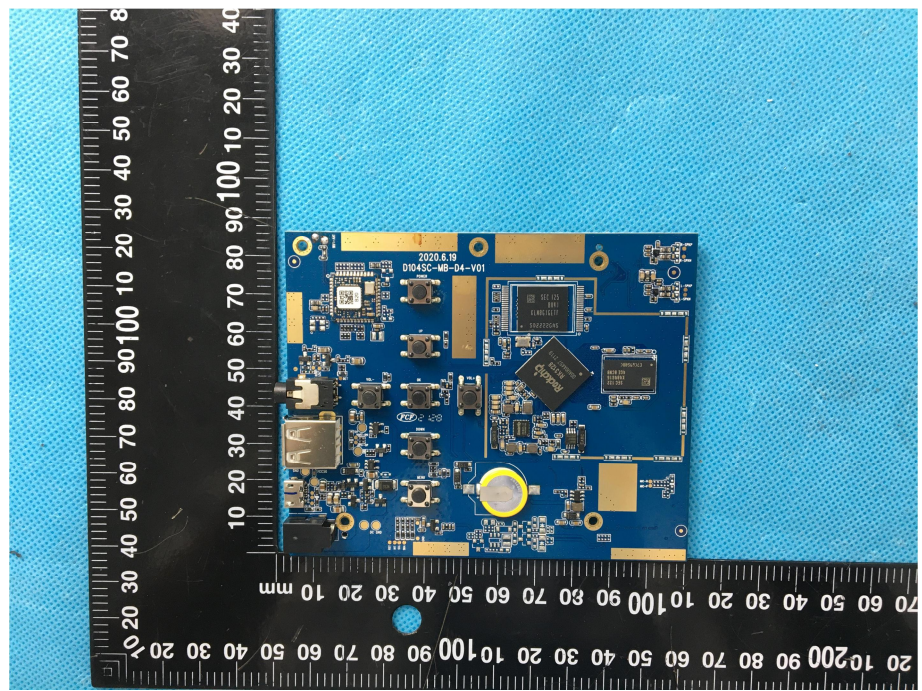


### EXHIBIT 3 - EUT INTERNAL PHOTOGRAPHS

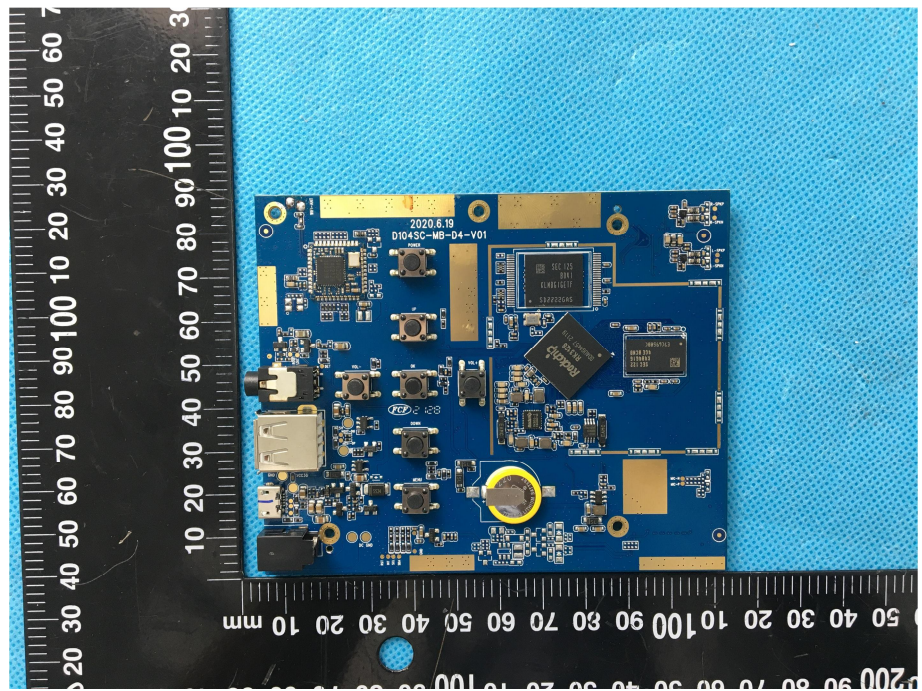
<p><b>EUT Housing and Board View 1</b></p>	 A photograph showing the internal components of a white plastic housing. A blue printed circuit board (PCB) is mounted inside, connected to a black flexible display strip. Two circular components, likely sensors or microphones, are visible on the right side of the board. A black ruler is placed vertically on the left side of the housing for scale, showing measurements in millimeters.
<p><b>Solder Board-Component View 1</b></p>	 A close-up photograph of the blue PCB component. The board features various electronic components, including gold-colored pads and solder joints. A black ruler is placed vertically on the left side of the board for scale, showing measurements in millimeters.



**Solder  
Board-Component View  
2**



**Solder  
Board-Component View  
3**



**Antenna View**

