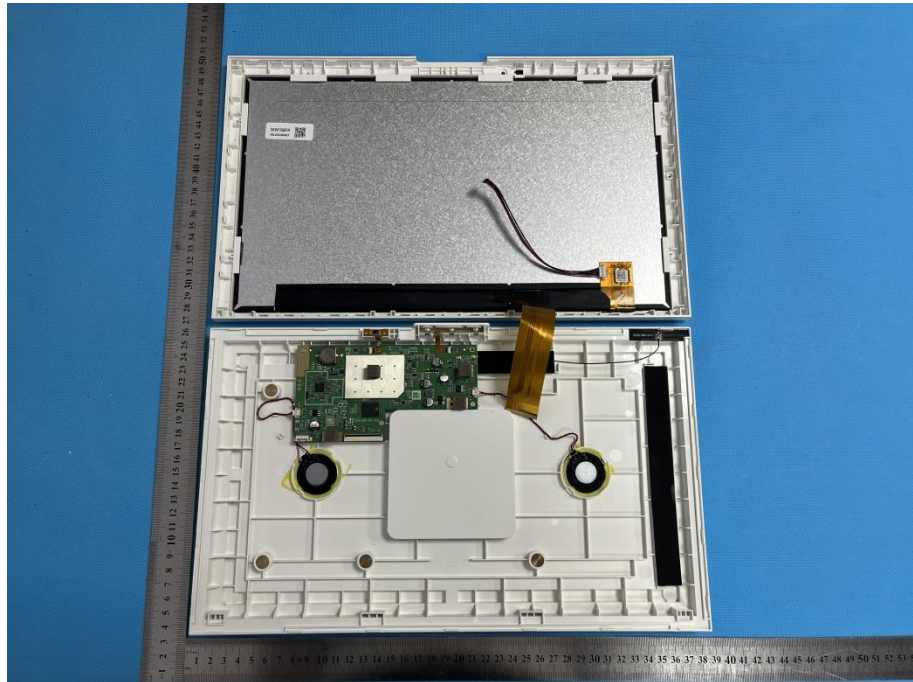
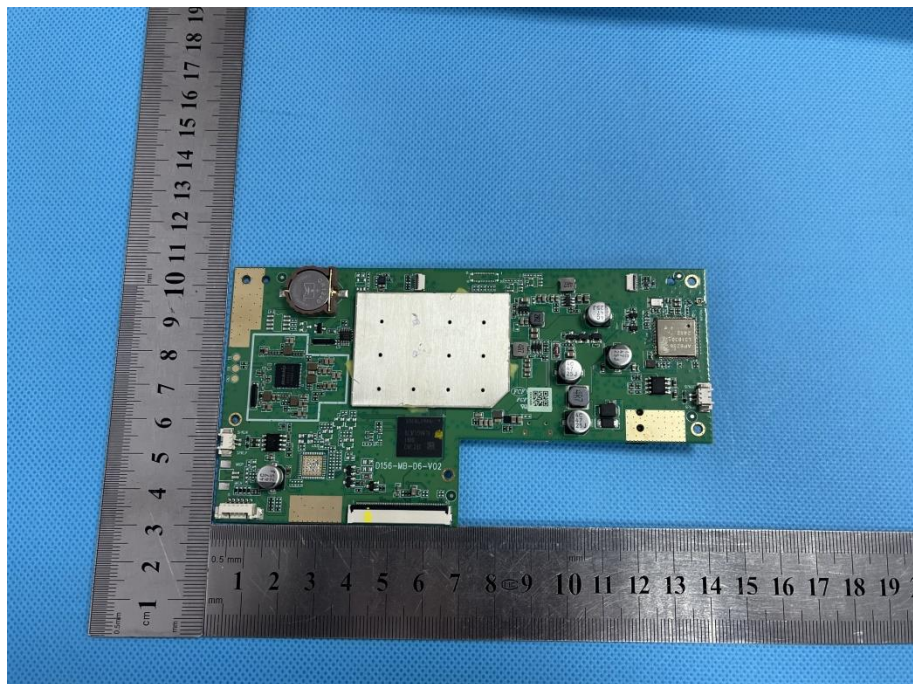


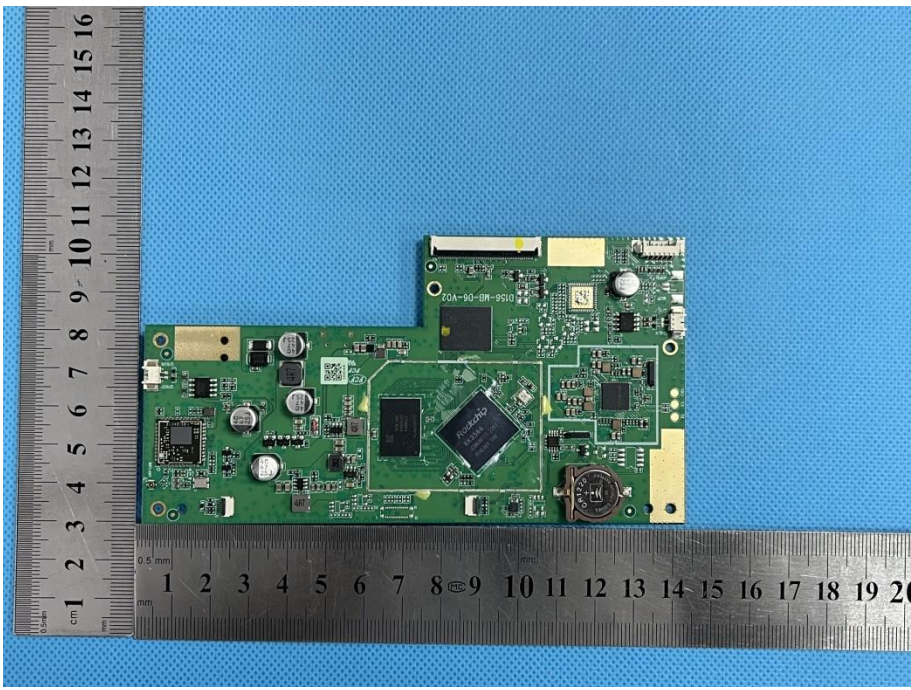
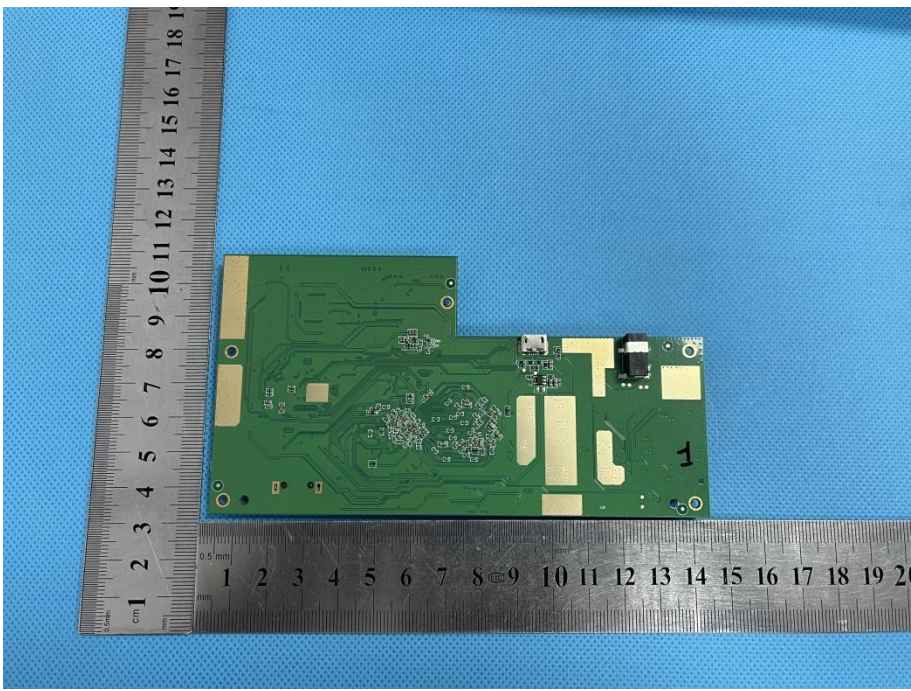
EXHIBIT 3 - EUT INTERNAL PHOTOGRAPHS

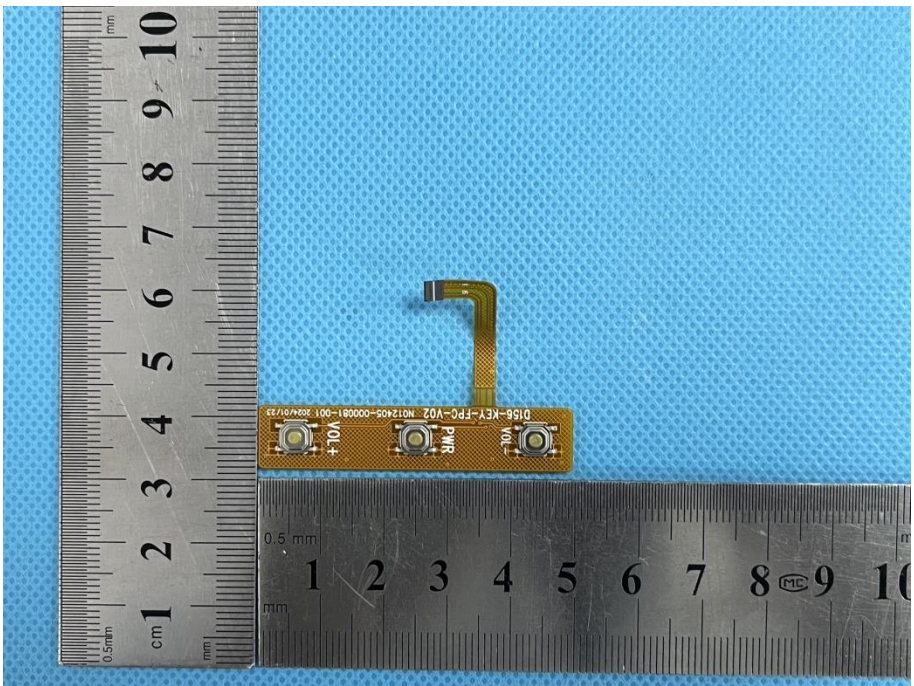
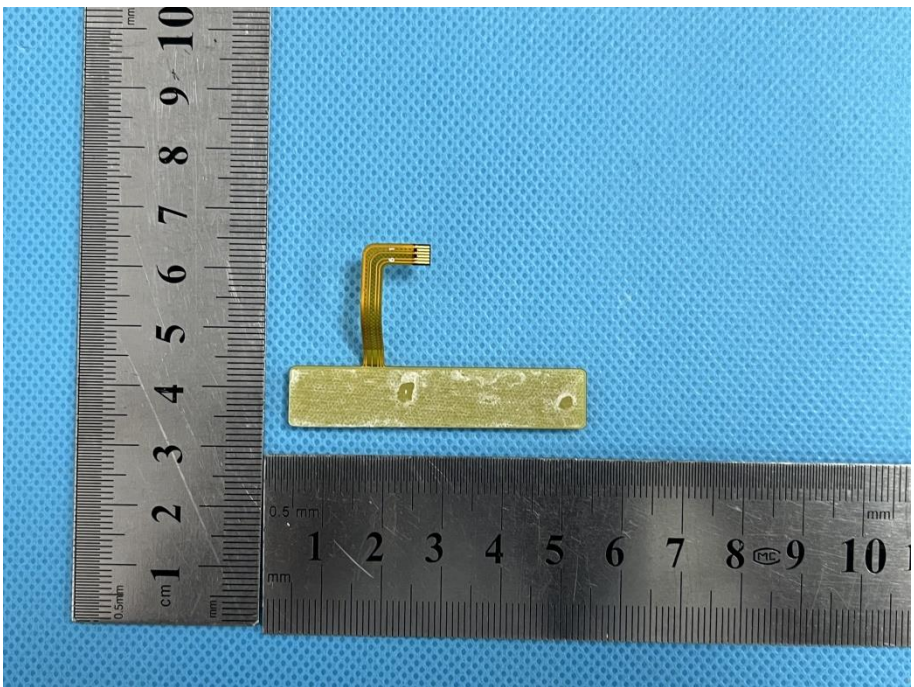
EUT Housing and Board View 1



Solder Board-Component View 1



<p>Solder Board-Component View 2</p>	 <p>A photograph of a green printed circuit board (PCB) component, labeled 'View 2'. The board is rectangular with a notch on the right side. It is populated with various electronic components, including a large black integrated circuit (IC) in the center, several smaller ICs, capacitors, and a circular component on the right. A silver ruler is placed horizontally below the board, showing measurements in centimeters (0 to 20) and millimeters (0.5 to 20). A vertical ruler is placed to the left of the board, showing measurements in centimeters (0 to 16) and millimeters (0.5 to 16). The background is a blue textured surface.</p>
<p>Solder Board-Component View 3</p>	 <p>A photograph of the same green PCB component, labeled 'View 3', showing the reverse side. The board features a complex pattern of copper traces and several large, rectangular gold-colored pads. A silver ruler is placed horizontally below the board, showing measurements in centimeters (0 to 20) and millimeters (0.5 to 20). A vertical ruler is placed to the left of the board, showing measurements in centimeters (0 to 18) and millimeters (0.5 to 18). The background is a blue textured surface.</p>

<p>Solder Board-Component View 4</p>	 <p>A photograph showing a small, rectangular, gold-colored solder board component with a flexible ribbon cable attached. The component is placed on a blue textured surface next to a metal ruler for scale. The ruler shows centimeters and millimeters. The component has three circular solder pads and a small rectangular pad. The ribbon cable is bent at a right angle. Text on the component includes "D156-KEY-FPC-V02", "N072405-000081-001 2024/07/23", "PWR", "V01", and "10A".</p>
<p>Solder Board-Component View 5</p>	 <p>A photograph showing the same solder board component from a different perspective. The component is placed on a blue textured surface next to a metal ruler for scale. The ruler shows centimeters and millimeters. The component is a rectangular gold-colored board with a flexible ribbon cable attached. The ribbon cable is bent at a right angle. There are three circular solder pads and a small rectangular pad on the board.</p>

Antenna View

