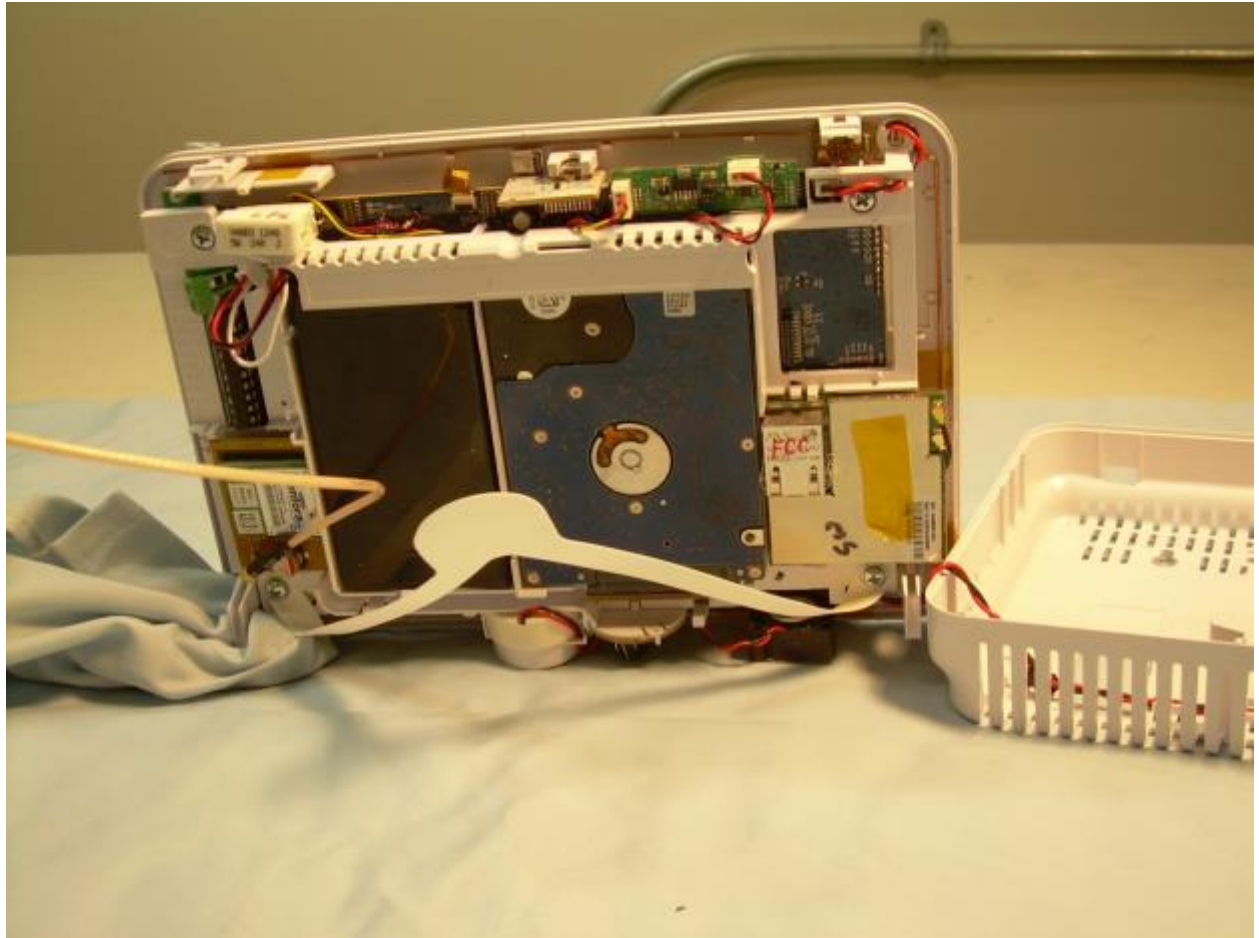
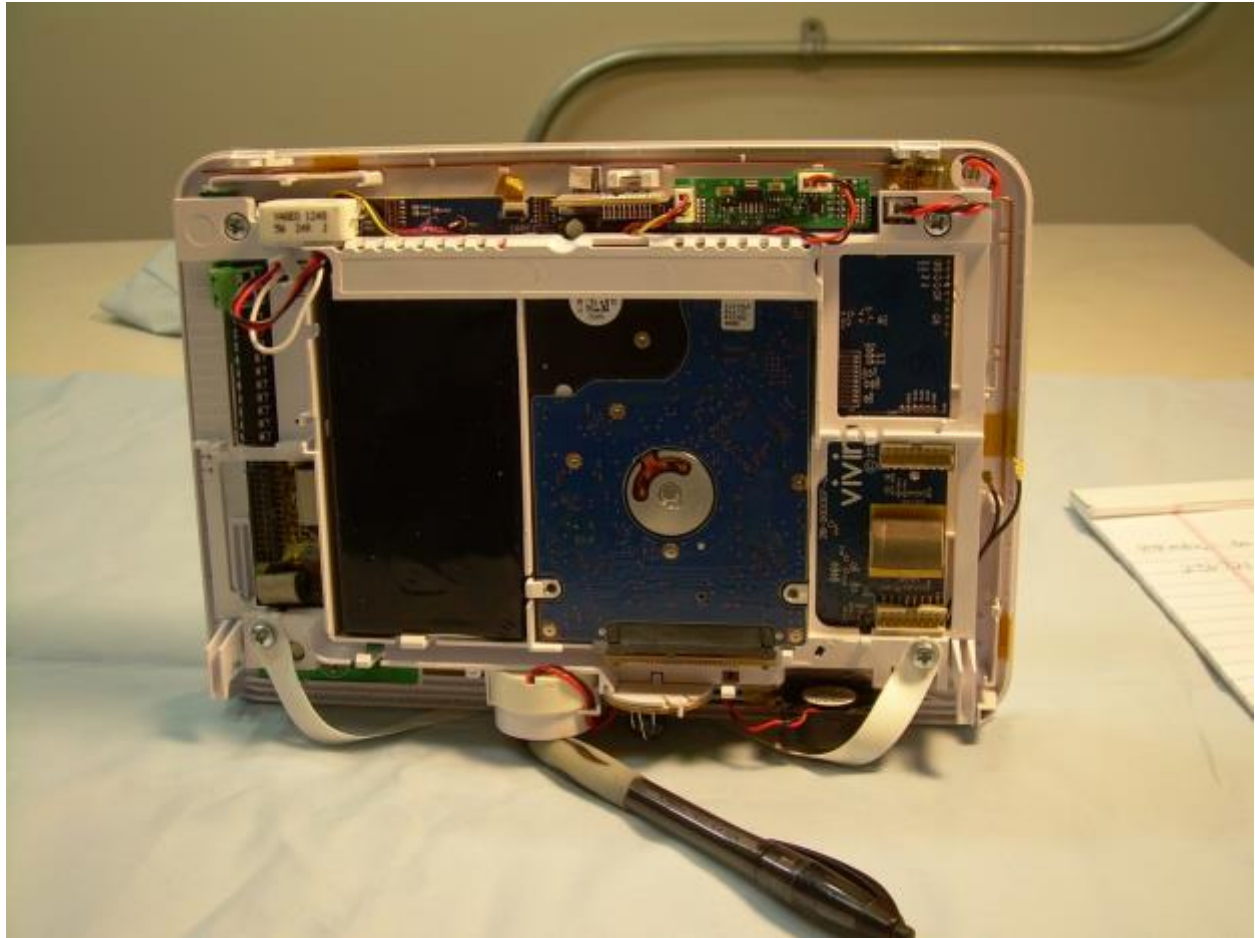


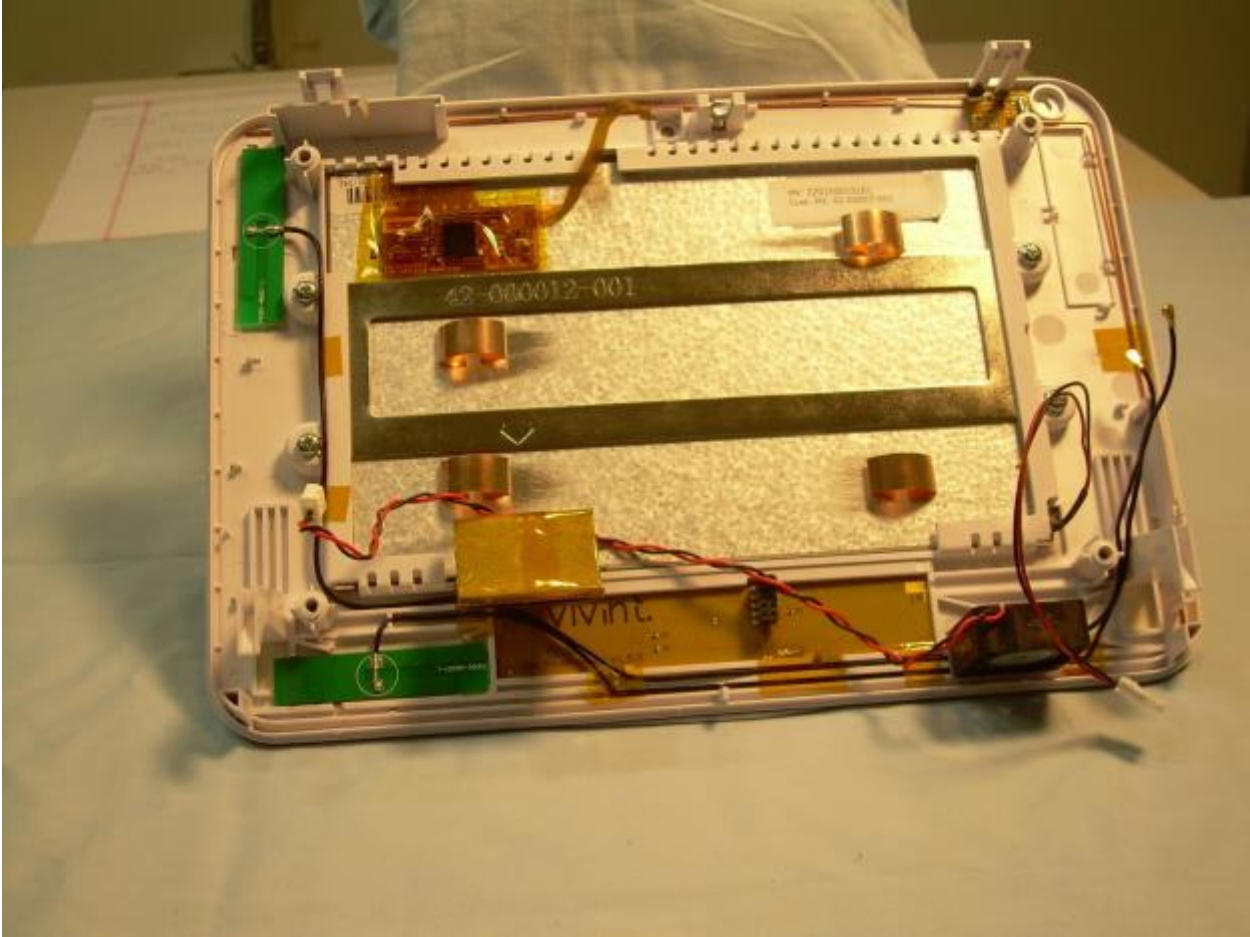
View of the EUT with the Back Cover Removed



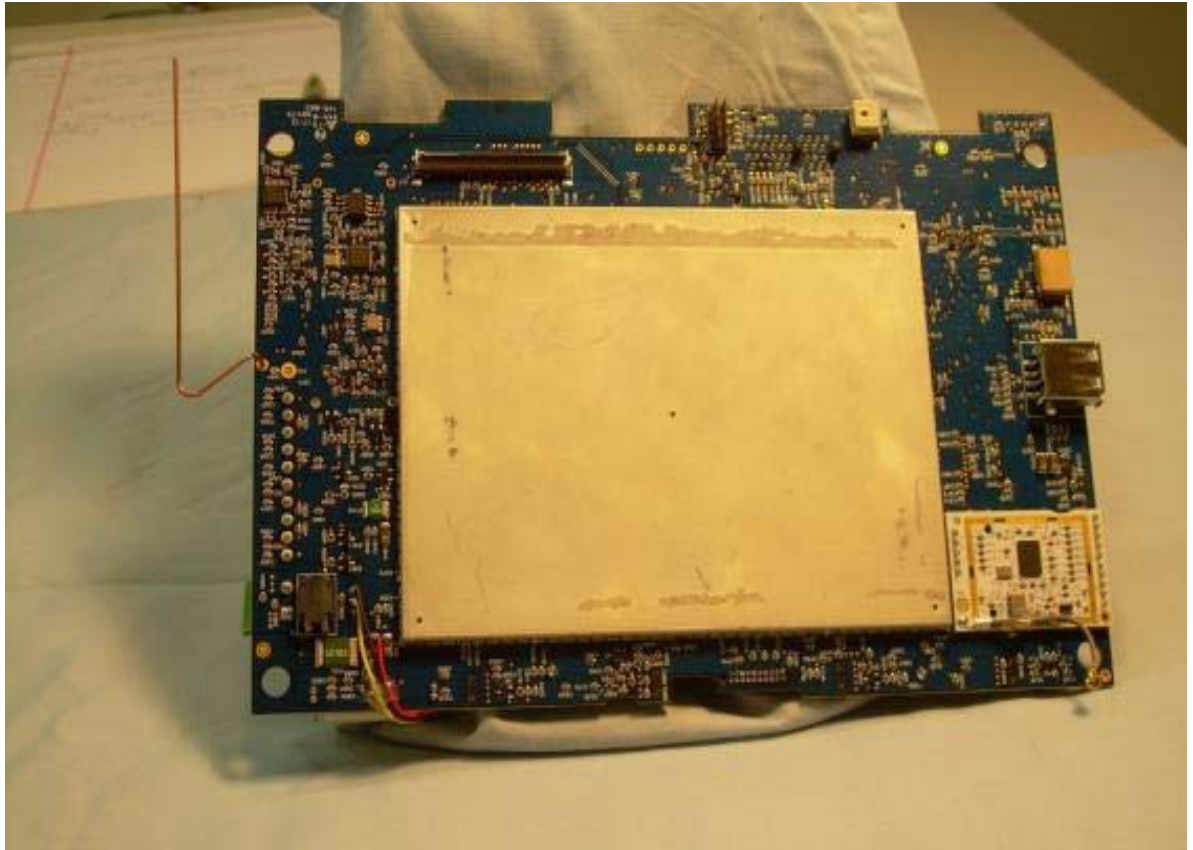
View of the EUT with the Cell Modem and Ethernet/WiFi Modules Removed



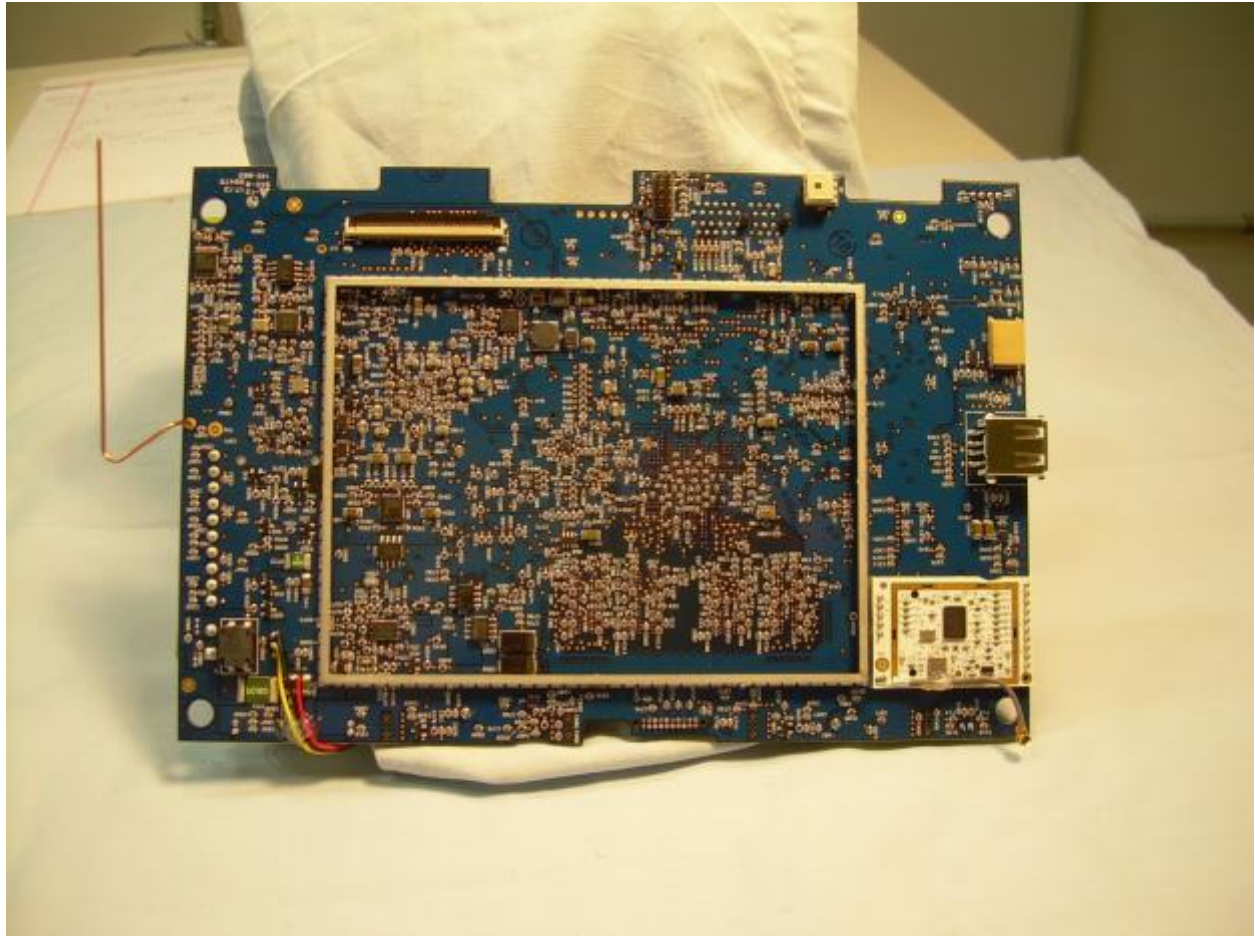
View of the EUT with the Main PCB Removed Showing WiFi Antennas, Fan, and Back of the Display Module



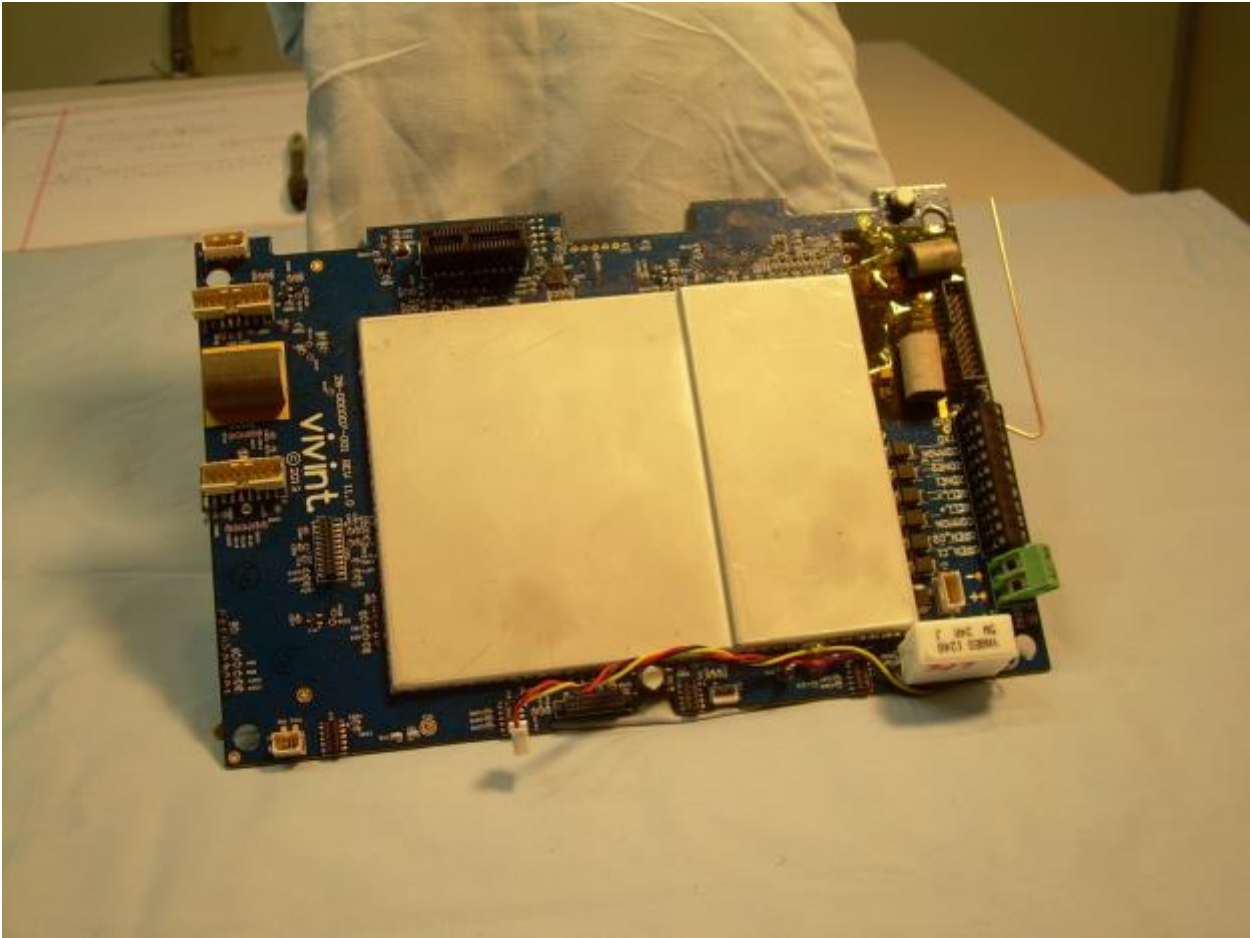
View of the Front Side of the Main PCB with RF Shield In Place



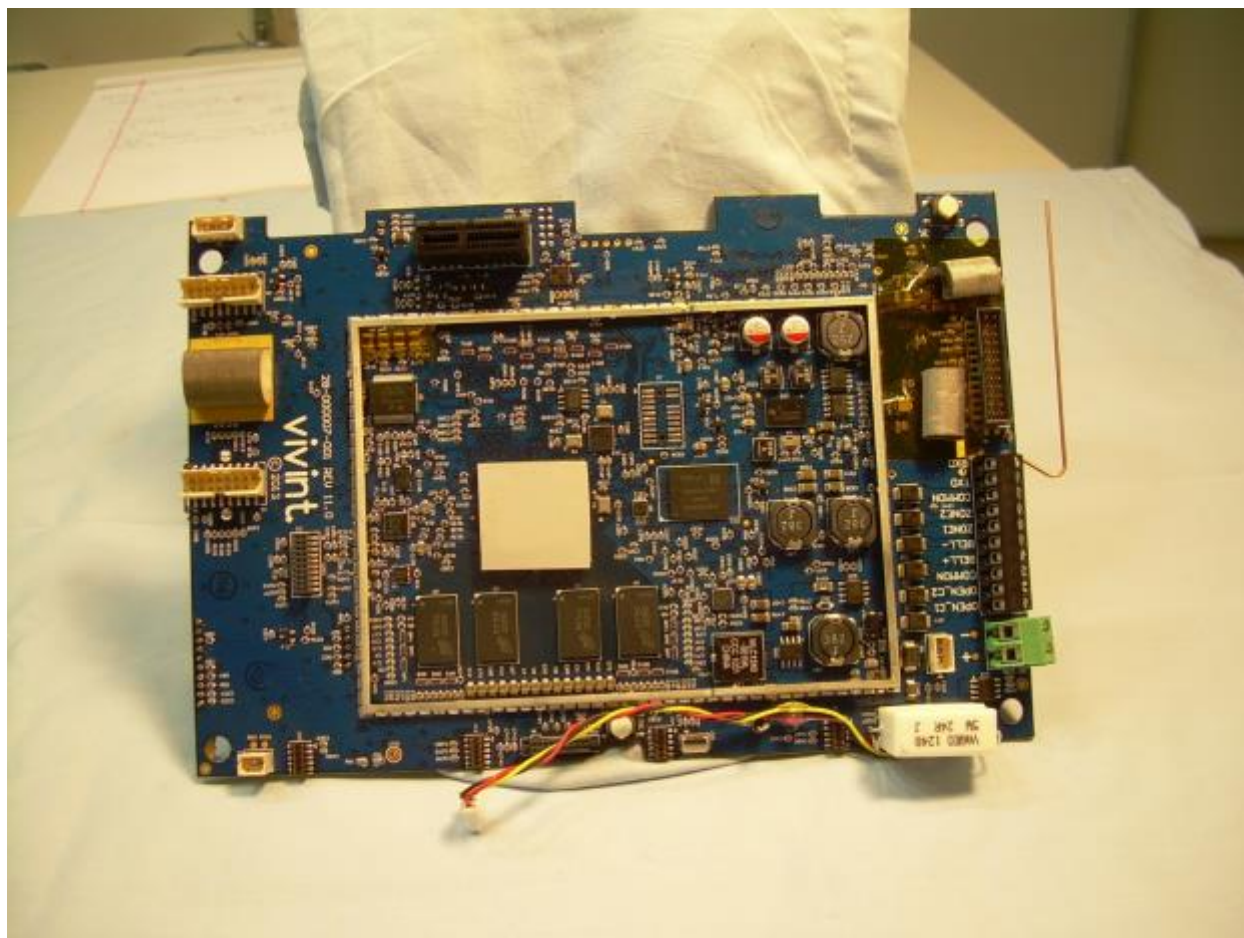
View of the Front Side of the Main PCB with RF Shield Removed



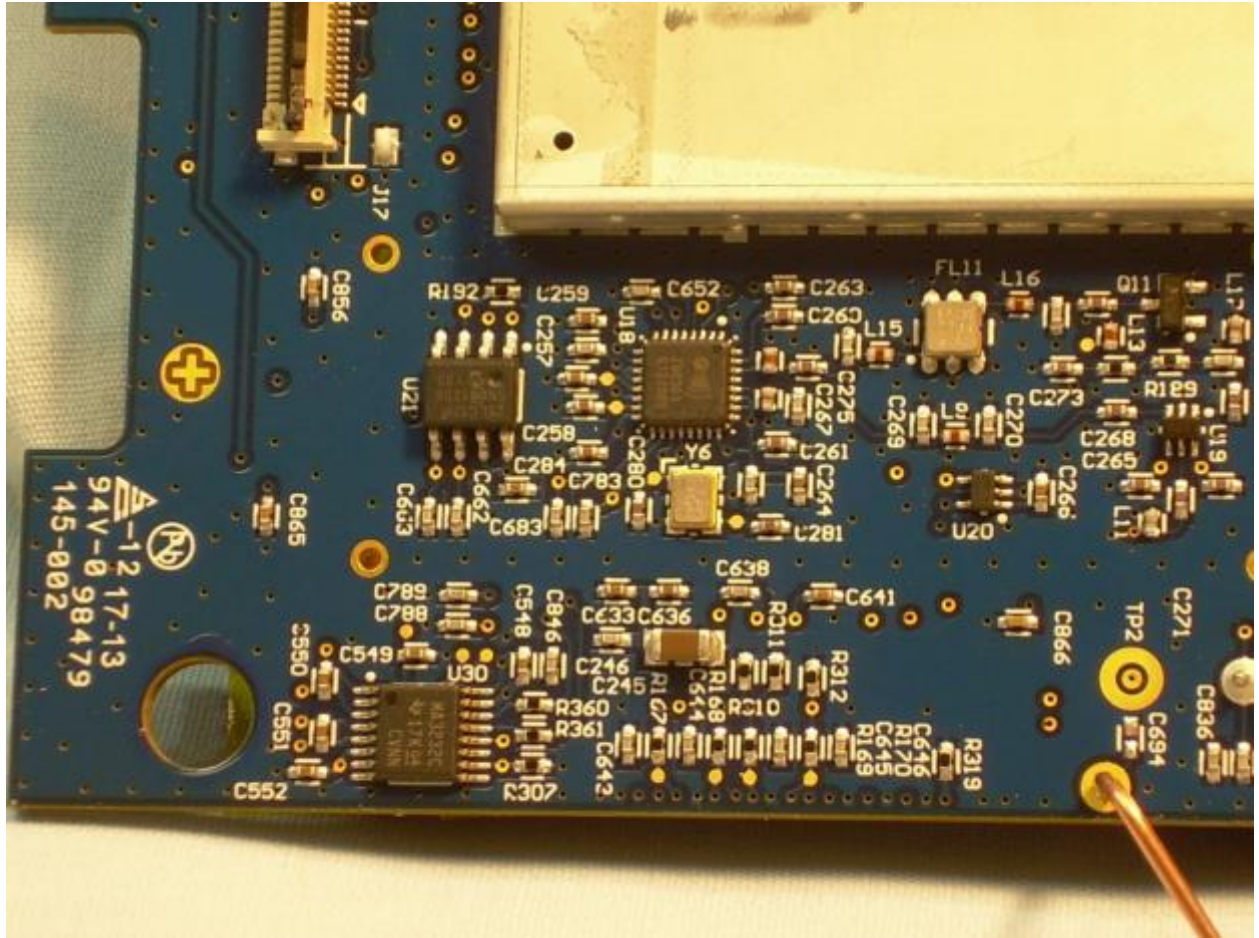
View of the Back Side of the Main PCB with RF Shield In Place



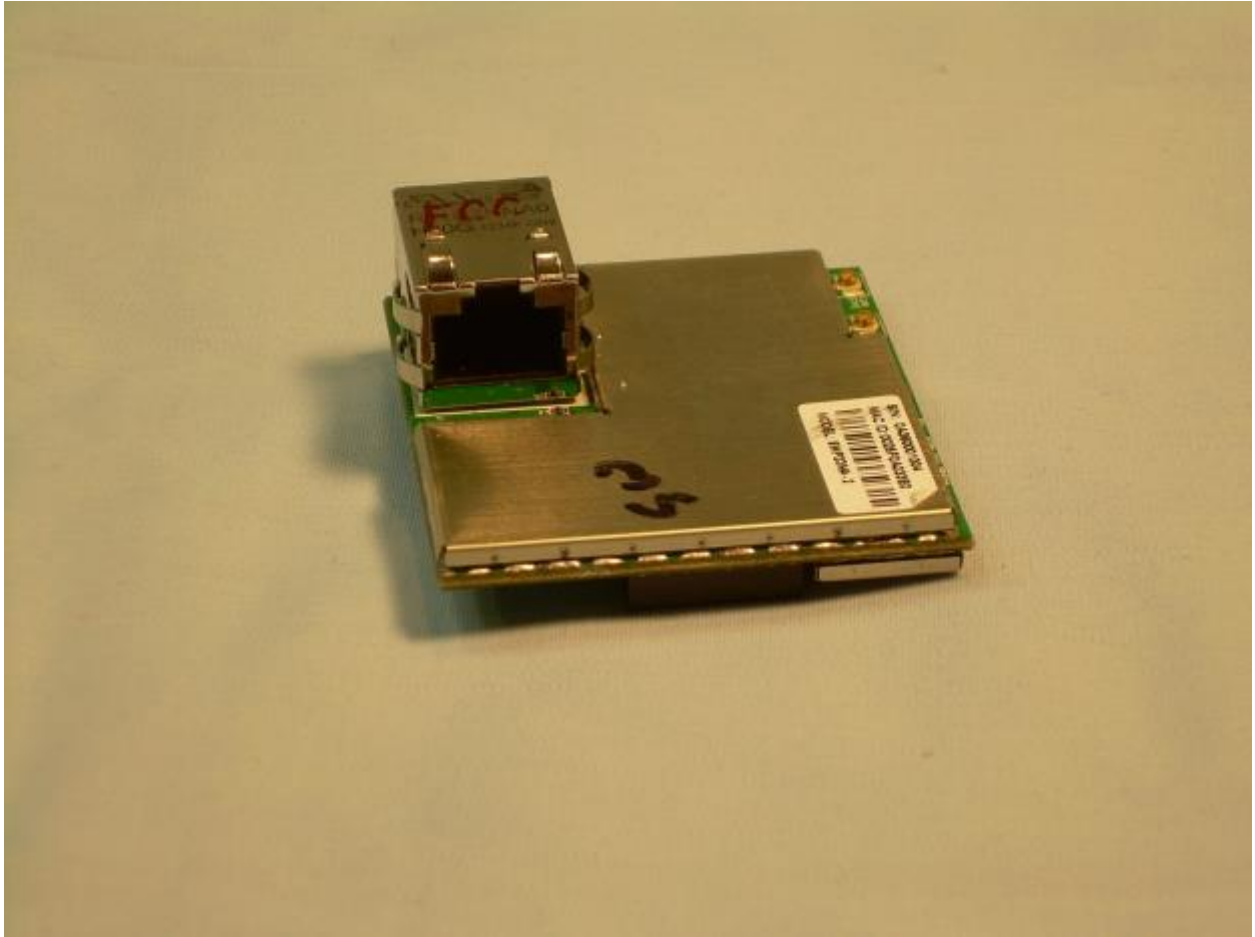
View of the Back Side of the Main PCB with RF Shield Removed



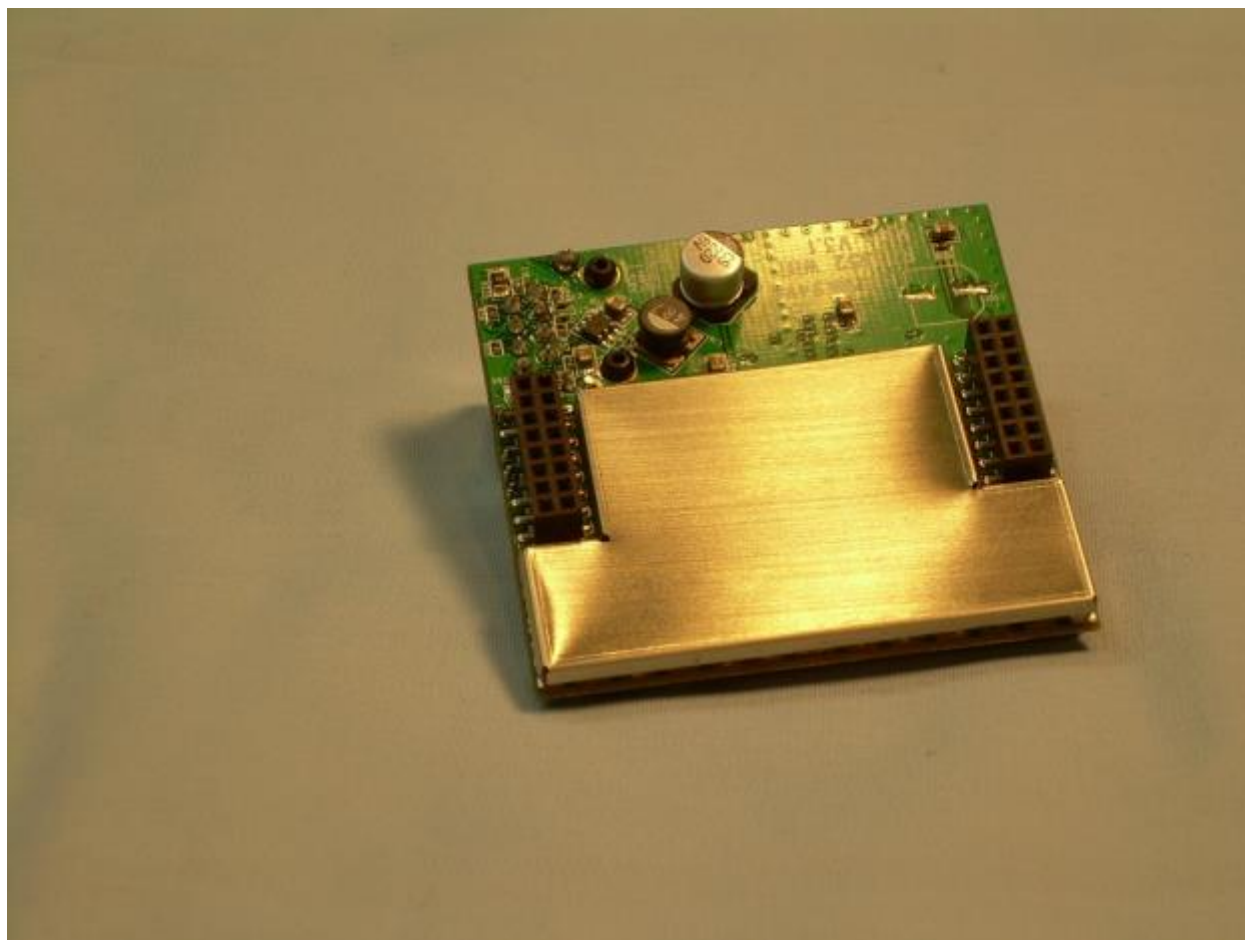
Circuitry Beneath Gasketing



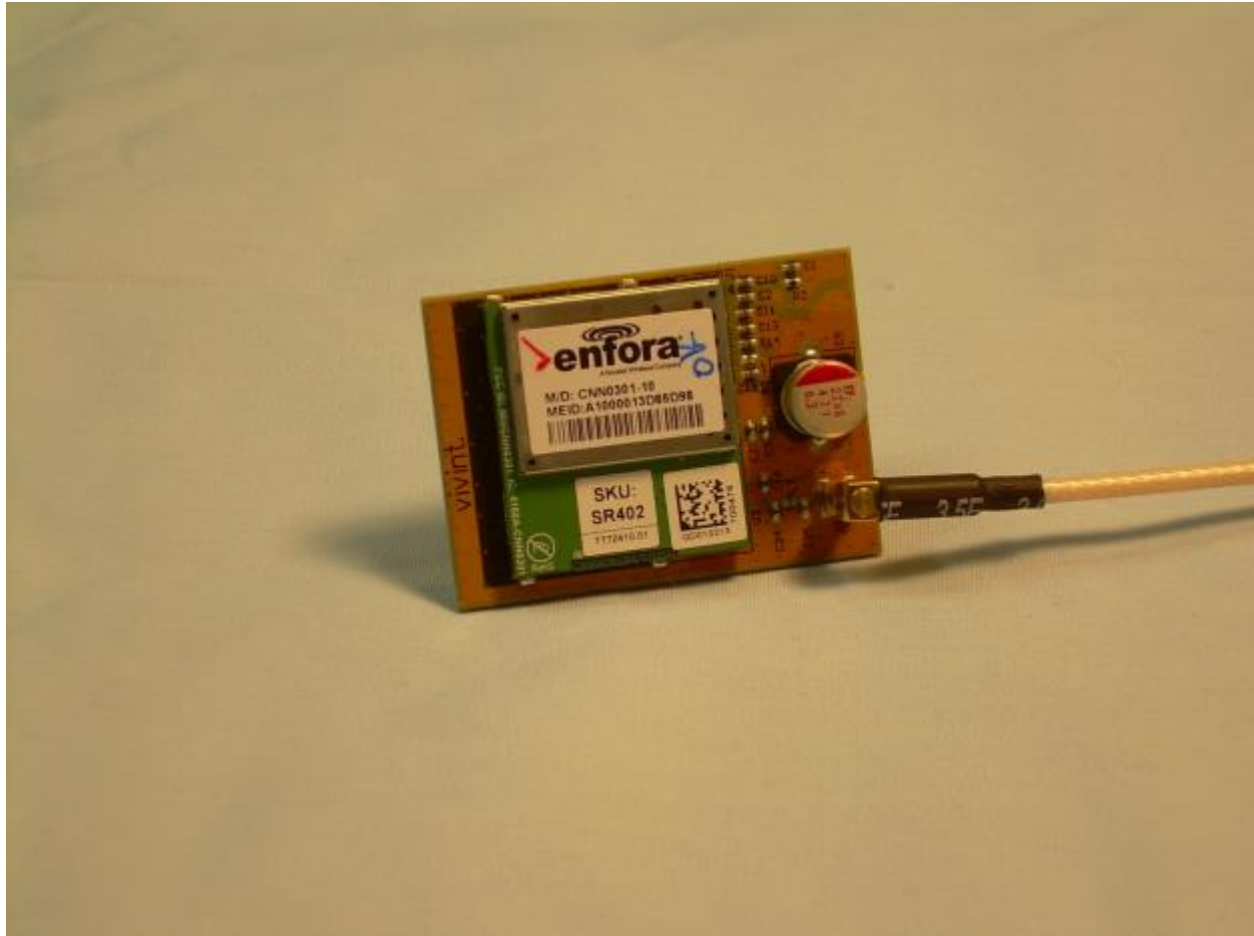
View of the Back Side of the Ethernet/WiFi Module



View of the Front Side of the Ethernet/WiFi Module



View of the Enfora HS3001 Cell Module



View of the Telit HE910-NAR Cell Module



View of the Telit CE910-DUAL Cell Module

