

## Bumblebee Regulatory WLAN Antenna Information

Platform information							
Brand	ODM	****Platform model name	Platform type (ex: regular NB, convertible PC, AIO...etc)	SAR minimum separation (mm)			
Vivint	Chicony	Bumblebee	Door bell				
Antenna information				Peak gain w/ cable loss (dBi)			
Vendor	Type	Antenna Part number (Main)	Antenna Part number (Diversity)	2.4GHz 2400-2500MHz	5.2GHz 5150-5350MHz	5.5GHz 5470-5725MHz	5.8GHz 5725-5850MHz
Amphenol	PIFA	CY5873-12-001-C	CY5873-12-002-C	0.72	1.08	2.56	0.53

## Antenna Information

### Section 1. Antenna Assembly Specifications

1A Antenna Part Number	1B Manu- facturer	1C Antenna Type	1D Cable Assembly Part Number and Information	Freq Range MHz	1E *Peak Gain W/ Cable loss (dBi)	1F Peak Gain w/o Cable Loss (dBi)	1G Max VSWR	1H Cable Loss (dB)
(P/N: CY5873-12-001-C) Main Tx1/ Rx1 Antenna	Amphenol Taiwan Corporation	PIFA	Connector: IPEX  Coaxial cable 50 ohm Coaxial length: 40.65mm	2400-2500	0.72	0.82	2.0	0.1
				5150-5350	1.08	1.48	2.0	0.4
				5470-5725	2.33	2.73	2.0	0.4
				5725-5850	0.53	0.94	2.0	0.41
(P/N: CY5873-12-002-C) Aux Tx2/ Rx2 Antenna	Amphenol Taiwan Corporation	PIFA	Connector: IPEX  Coaxial cable 50 ohm Coaxial length: 40.65mm	2400-2500	0.69	0.79	2.0	0.1
				5150-5350	-0.24	0.16	2.0	0.4
				5470-5725	0.12	0.52	2.0	0.4
				5725-5850	2.56	2.97	2.0	0.41

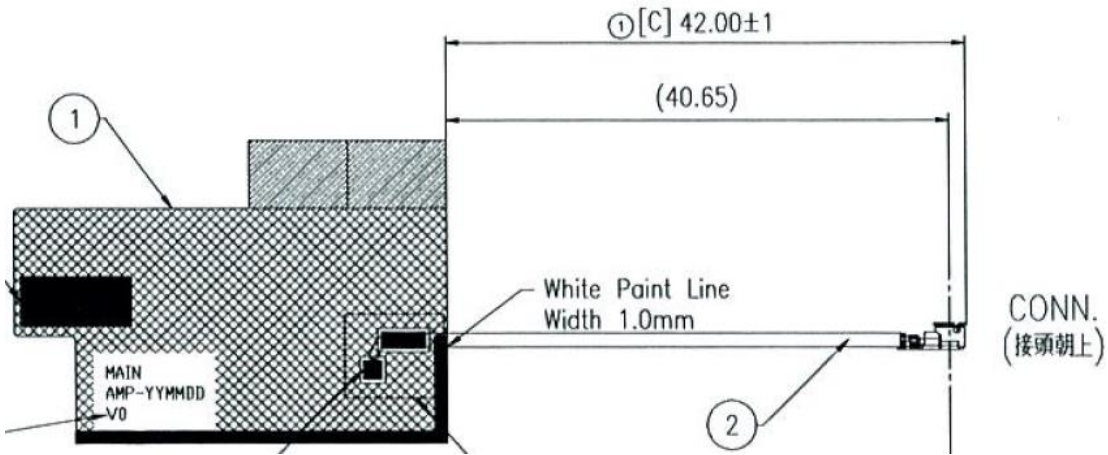
- Antenna Peak Gain required being test in system basis.

**3D Antenna Peak Gain Table:**

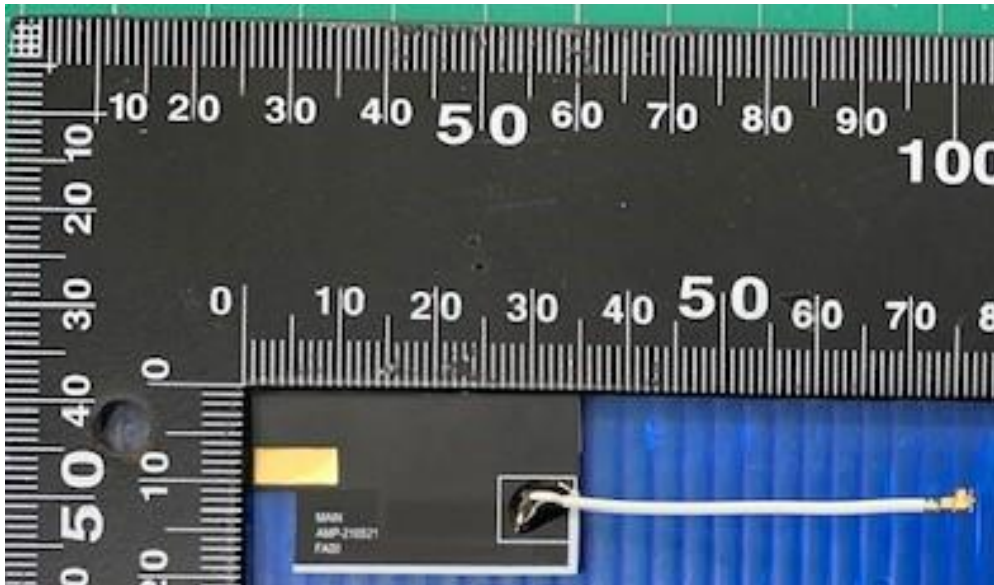
	<b>Main antenna</b>	<b>Diversity Antenna</b>
<b>Frequency (MHz)</b>	<b>(dBi)</b>	<b>(dBi)</b>
<b>2400</b>	0.22	0.20
<b>2450</b>	0.58	0.24
<b>2500</b>	0.72	0.69
<b>5150</b>	-0.14	-0.68
<b>5250</b>	1.08	-1.75
<b>5350</b>	0.87	-0.24
<b>5470</b>	2.33	-0.34
<b>5600</b>	1.86	-0.23
<b>5725</b>	0.53	0.12
<b>5785</b>	0.13	2.56
<b>5850</b>	-0.25	1.26

## Section 2. Dimensioned Photos or Drawings of Antennas

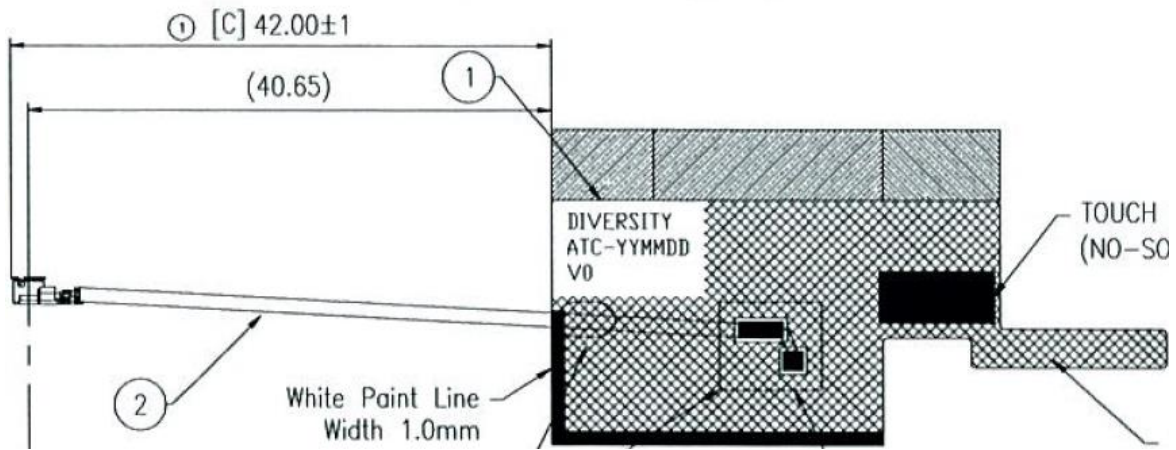
### Main Antenna Dimensioned Drawing:



### Main Antenna Photo:



**Diversity Antenna Dimensioned Drawing:**



**Diversity Antenna Photo:**

