

USB Power cable line 1: BLJ



Radiated spurious emission Test Setup-1(Below 1GHz)



Radiated spurious emission Test Setup-2(Above 1GHz)



Radiated spurious emission Test Setup-3(Below 30MHz)



Conducted Emissions Test Setup

USB Power cable line 2: CS



Radiated spurious emission Test Setup-1(Below 1GHz)



Radiated spurious emission Test Setup-2(Above 1GHz)



Radiated spurious emission Test Setup-3(Below 30MHz)



Conducted Emissions Test Setup

PHOTOGRAPHS OF EUT Constructional Details

Test model No.:DXR-8



View of Product-1



View of Product-2



View of Product-3



View of Product-4



View of Product-5



View of Product-6



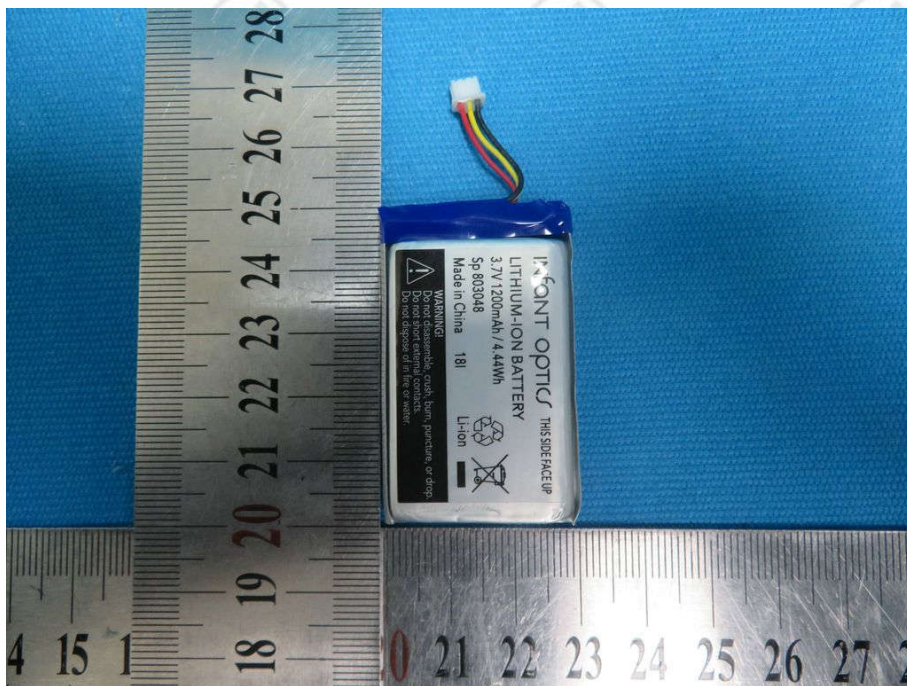
View of Product-7



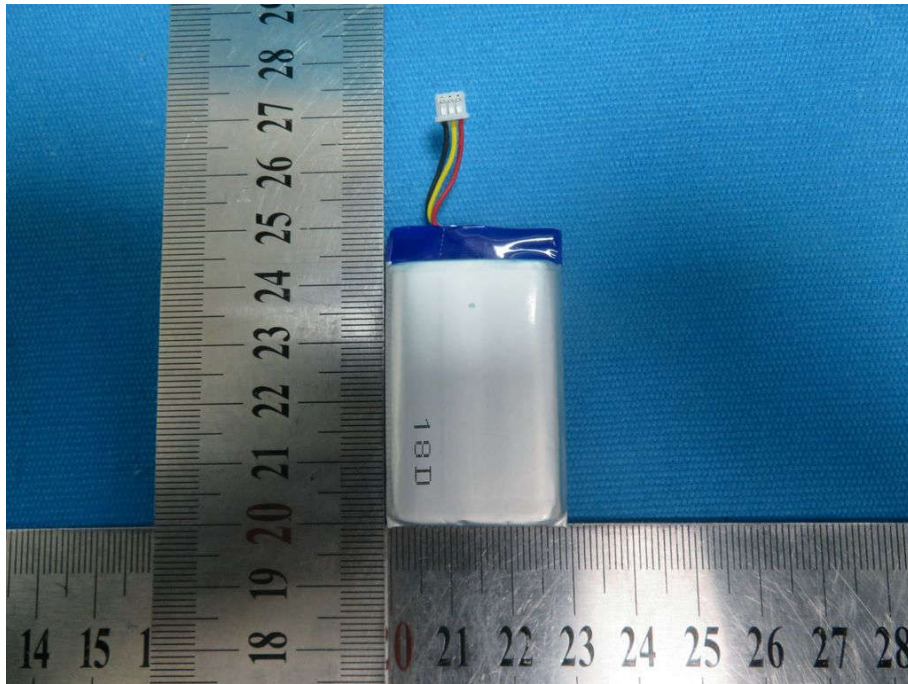
View of Product-8



View of Product-9



View of Product-10



View of Product-11



View of Product-12



View of Product-13



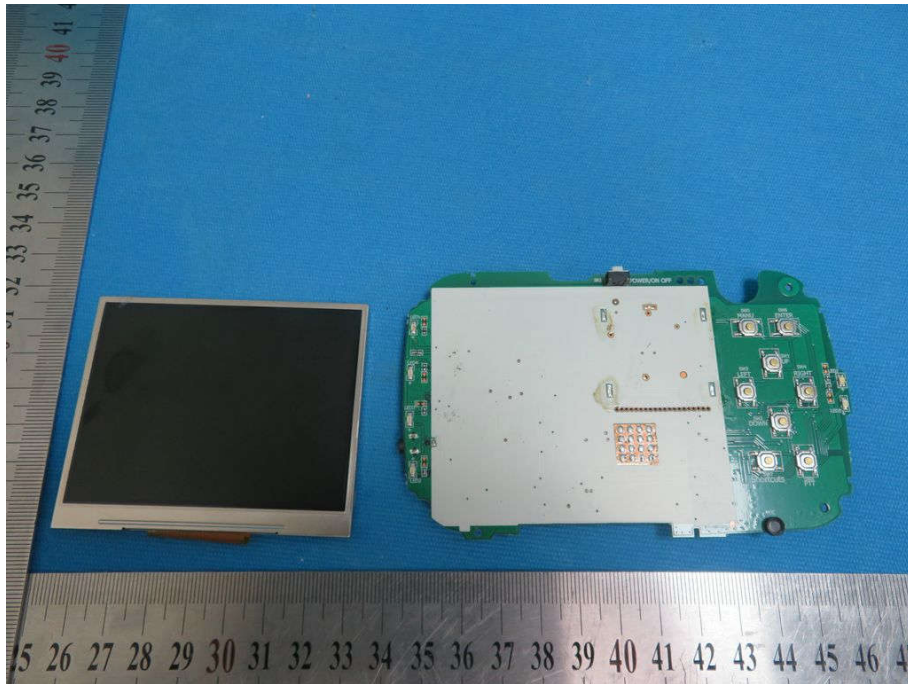
View of Product-14



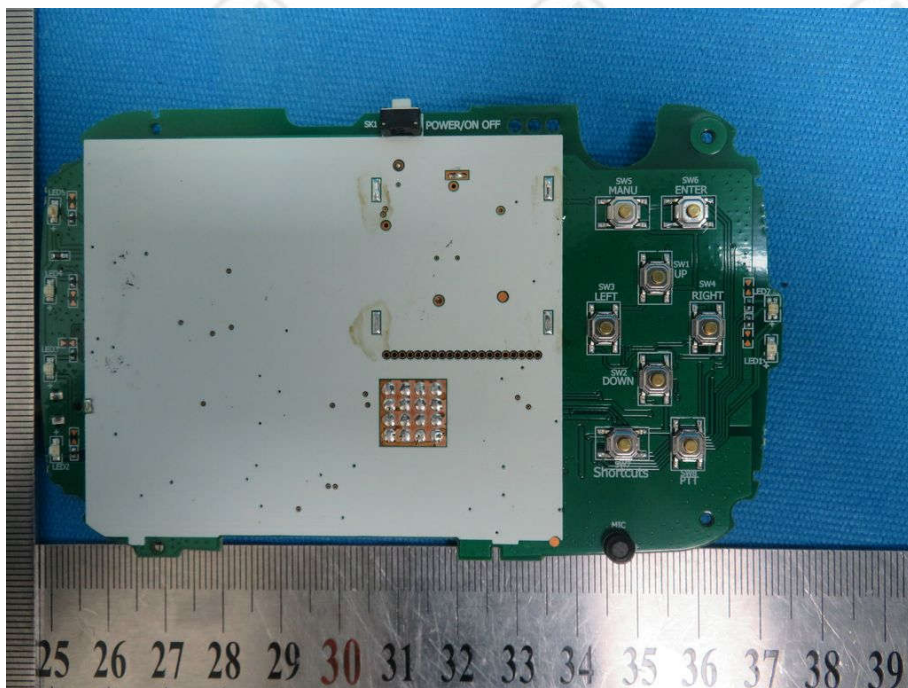
View of Product-15



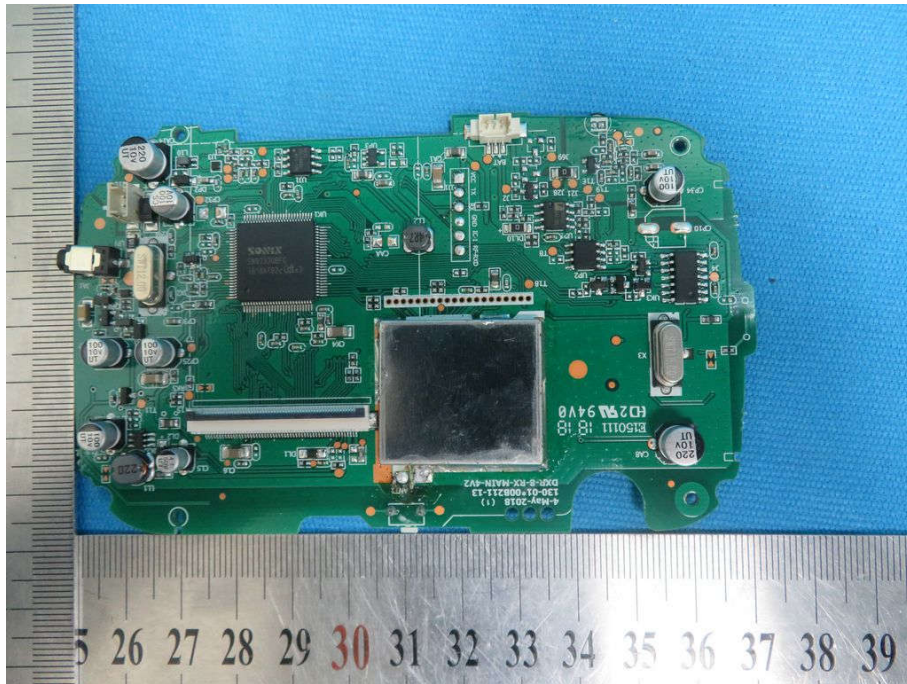
View of Product-16



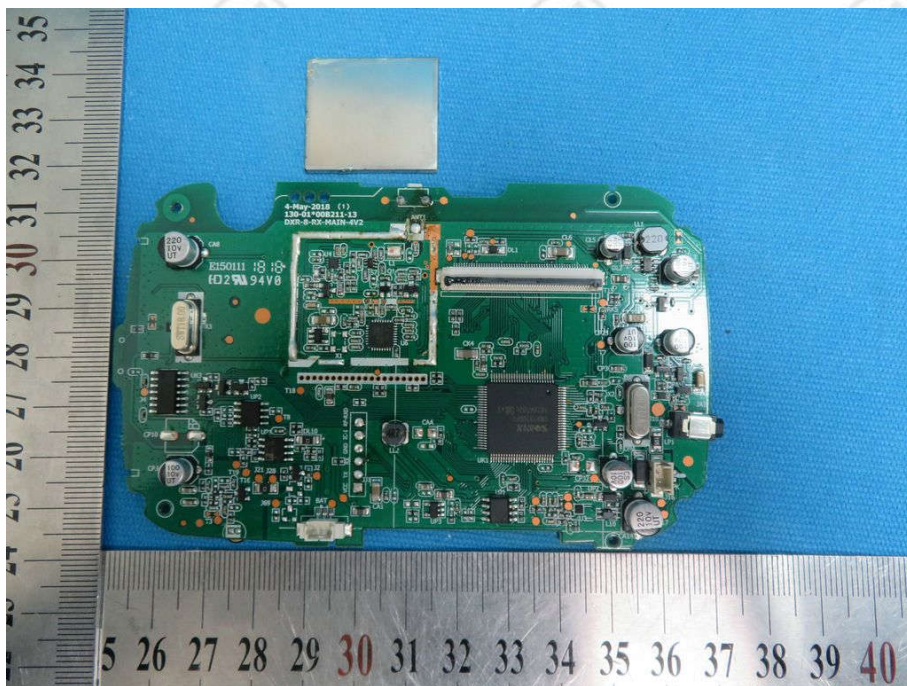
View of Product-17



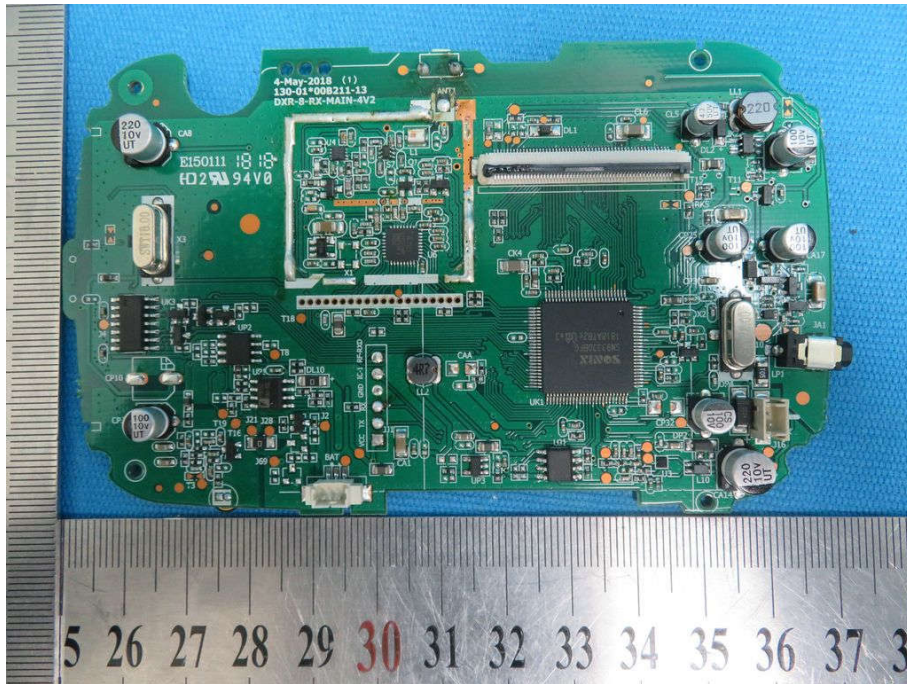
View of Product-18



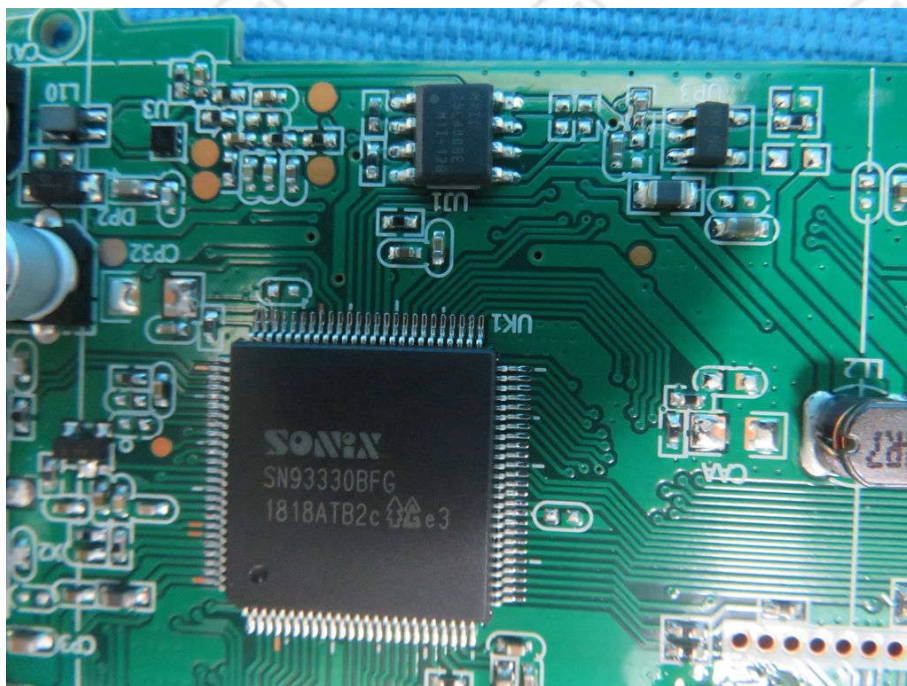
View of Product-19



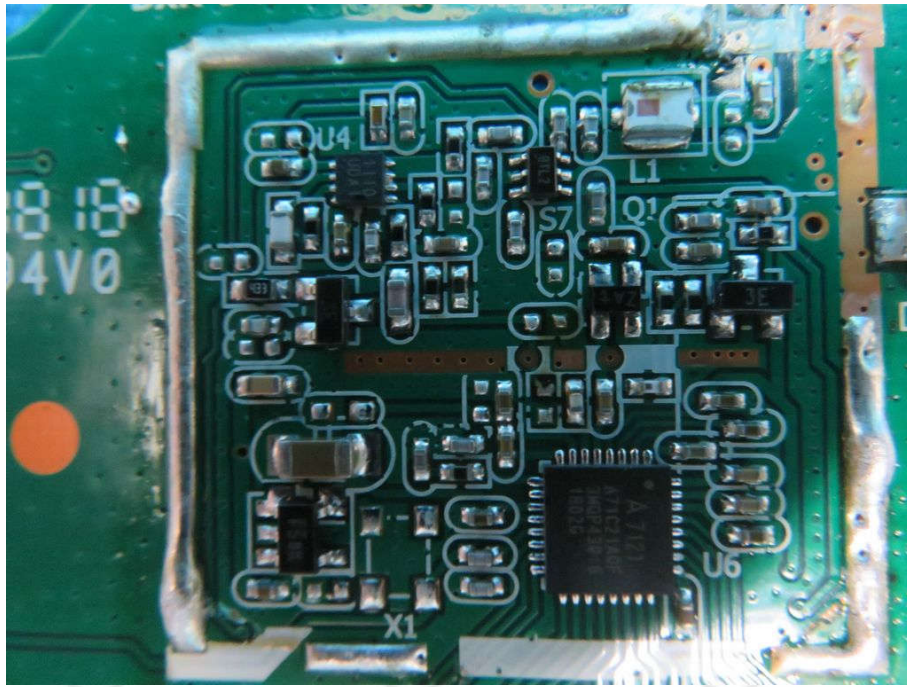
View of Product-20



View of Product-21



View of Product-22



View of Product-23

BLJ06W050055P1-U



View of Product-24



View of Product-25



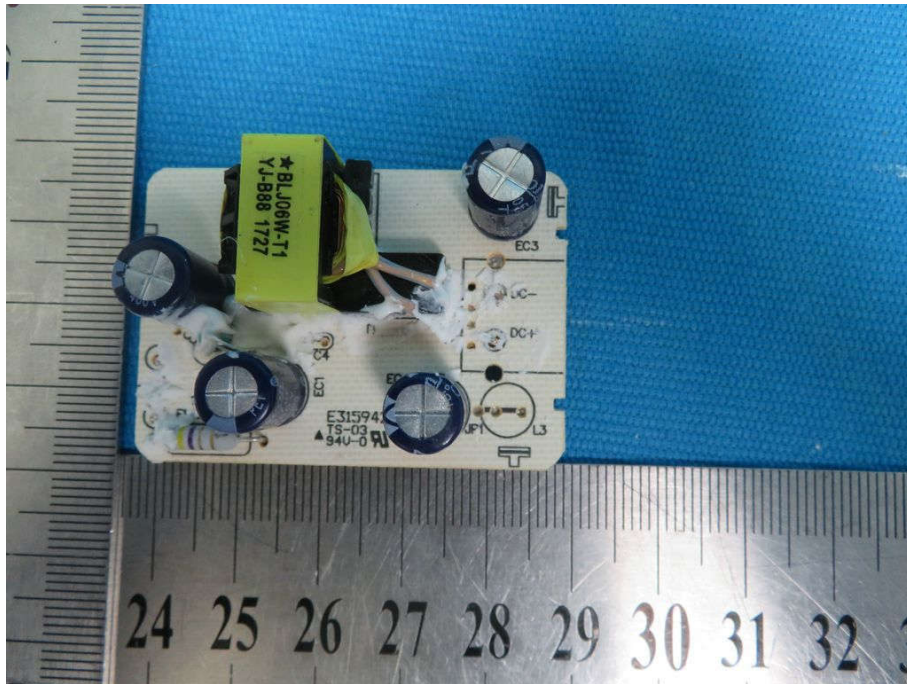
View of Product-26



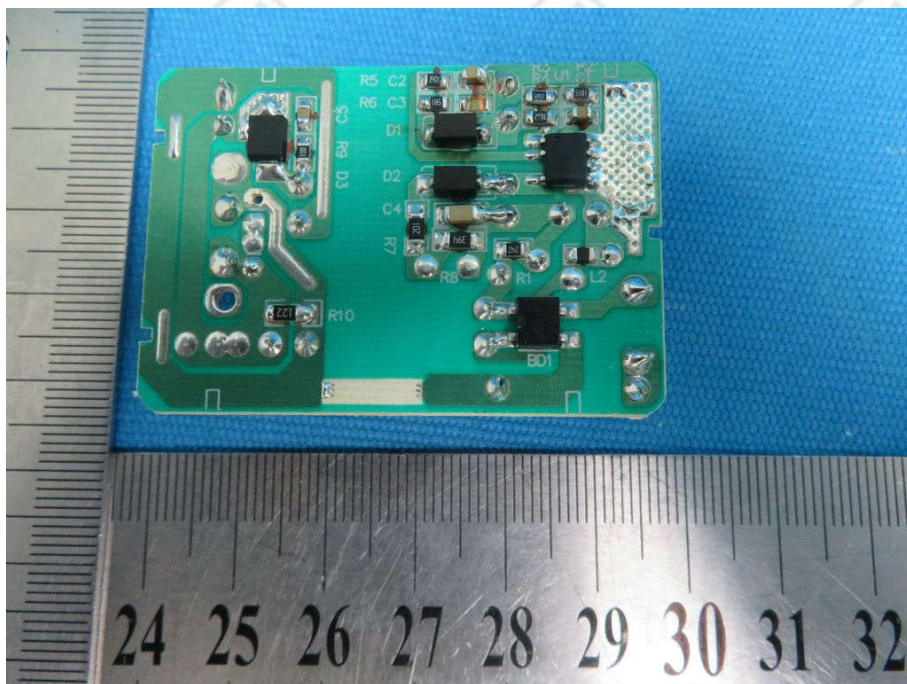
View of Product-27



View of Product-28



View of Product-29



View of Product-30

CS3B050055FU



View of Product-31



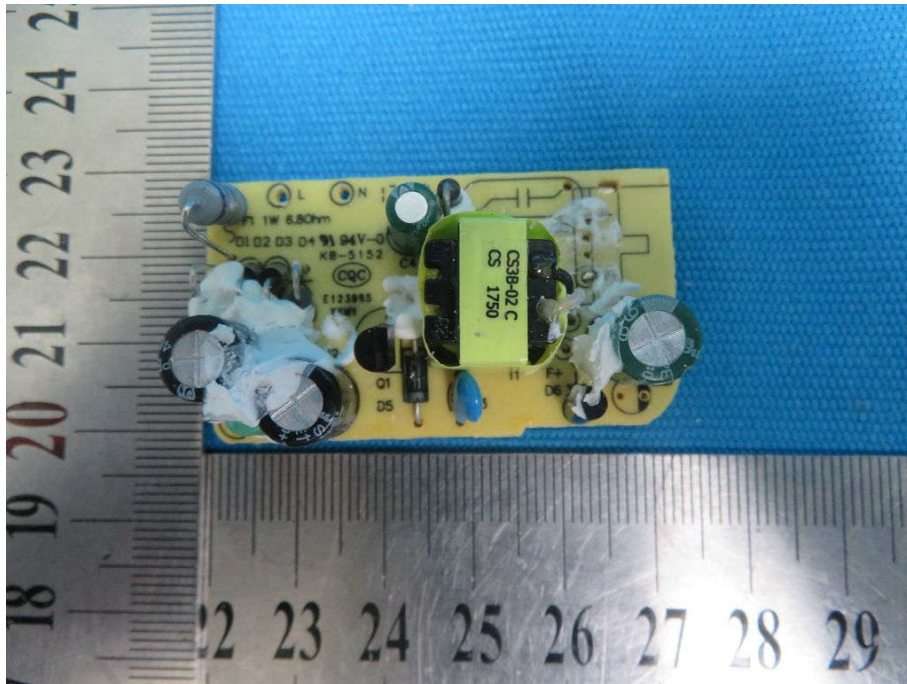
View of Product-32



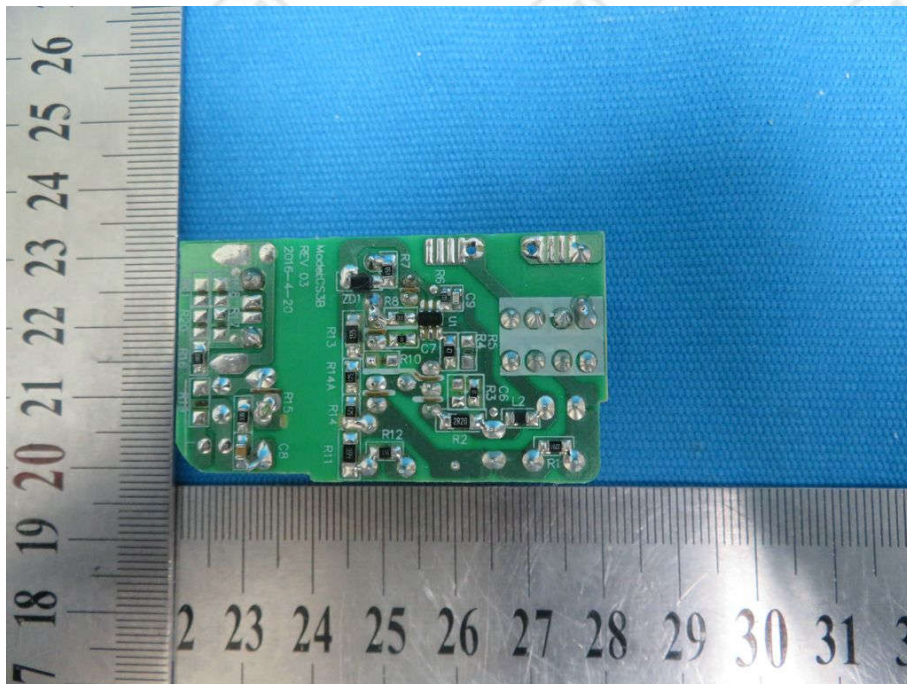
View of Product-33



View of Product-34



View of Product-35



View of Product-36

*** End of Report ***

The test report is effective only with both signature and specialized stamp, The result(s) shown in this report refer only to the sample(s) tested. Without written approval of CTI, this report can't be reproduced except in full.