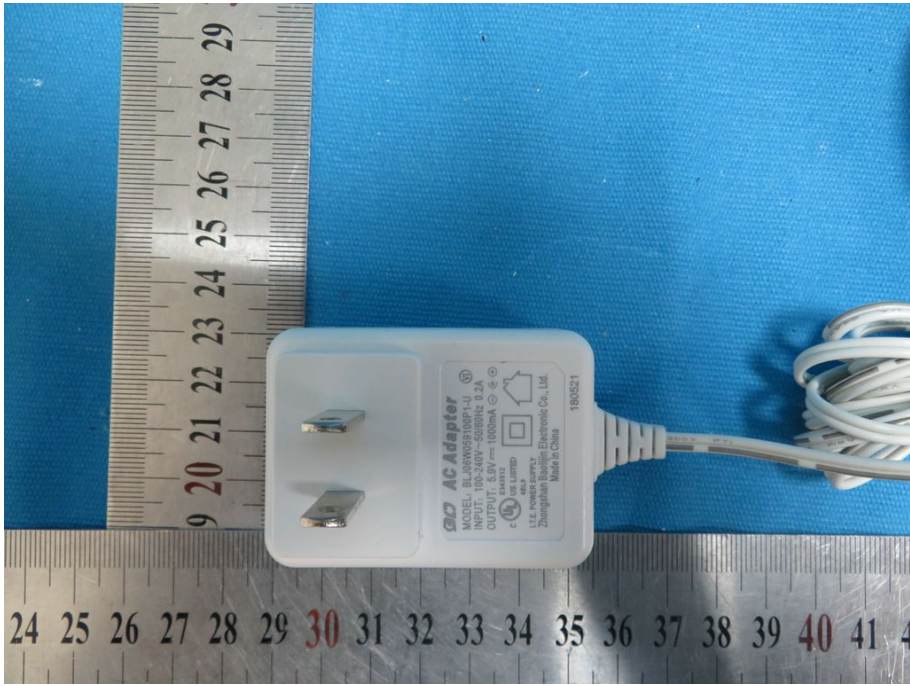


BLJ06W059100P1-U





CS6D059100FU





INFANT OPTICS

I.T.E. POWER SUPPLY

Class II Equipment

Model: CS6D059100FU

Input: 100-240V~ 50/60Hz 200mA

Output: 5.9VDC --- 1.0A

Efficiency Level: (V)

FC

UL

UL

US LISTED

E234082

1076

Made in China