

SEASIDE

WIRELESS KEYLESS ENTRY

MODEL : T06111R1010

! WARNING

To reduce any possible *SERIOUS INJURY* or *DEATH* from a moving garage door :

- **READ AND FOLLOW ALL INSTRUCTIONS.**
- **NEVER** let children operate or play with remote controls. Keep remote control away from children.
- Always keep the moving door in sight and away from people and objects until it is completely closed. **NO ONE SHOULD CROSS THE PATH OF THE MOVING DOOR.**

FCC Caution. This device complies with part 15 of the FCC Rules. Operation is subject to the following two conditions: (1) This device may not cause harmful interference, and (2) this device must accept any interference received, including interference that may cause undesired operation.

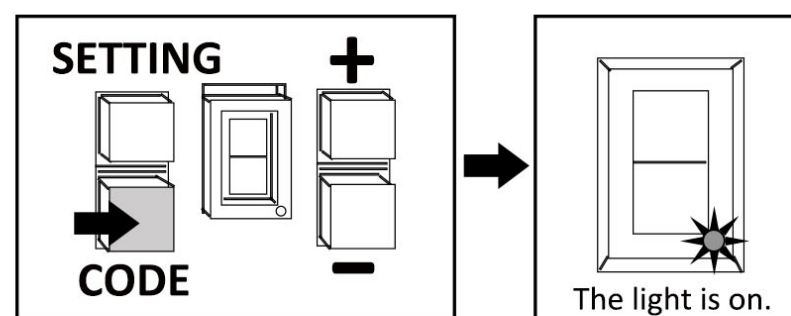
Any Changes or modifications not expressly approved by the party responsible for compliance could void the user's authority to operate the equipment.

Note: This equipment has been tested and found to comply with the limits for a Class B digital device, pursuant to part 15 of the FCC Rules. These limits are designed to provide reasonable protection against harmful interference in a residential installation. This equipment generates uses and can radiate radio frequency energy, and, if not installed and used in accordance with the instructions, may cause harmful interference to radio communications. However, there is no guarantee that interference will not occur in a particular installation. If this equipment does cause harmful interference to radio or television reception, which can be determined by turning the equipment off and on, the user is encouraged to try to correct the interference by one or more of the following measures:

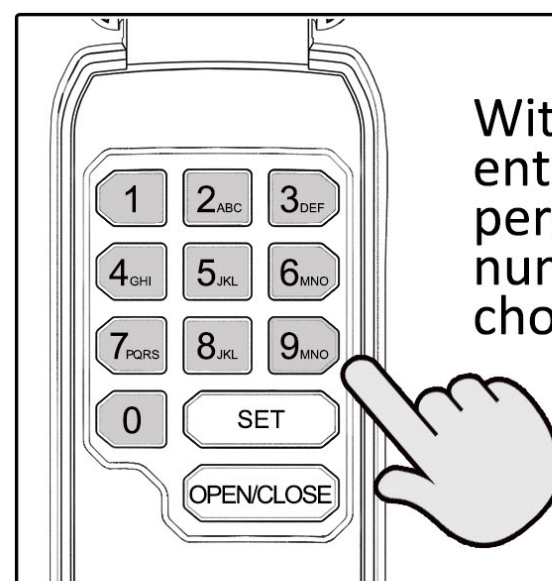
- Reorient or relocate the receiving antenna.
- Increase the separation between the equipment and receiver.
- Connect the equipment into an outlet on a circuit different from that to which the receiver is connected.
- Consult the dealer or an experienced radio/TV technician for help.

SET THE MASTER PASSWORD

1 Press and release the "CODE" button on motor unit. The learn indicator light will glow steadily for 10 seconds.



2 Within 10 seconds, enter a three to six personal identification number (PIN) of your choice on the keypad.

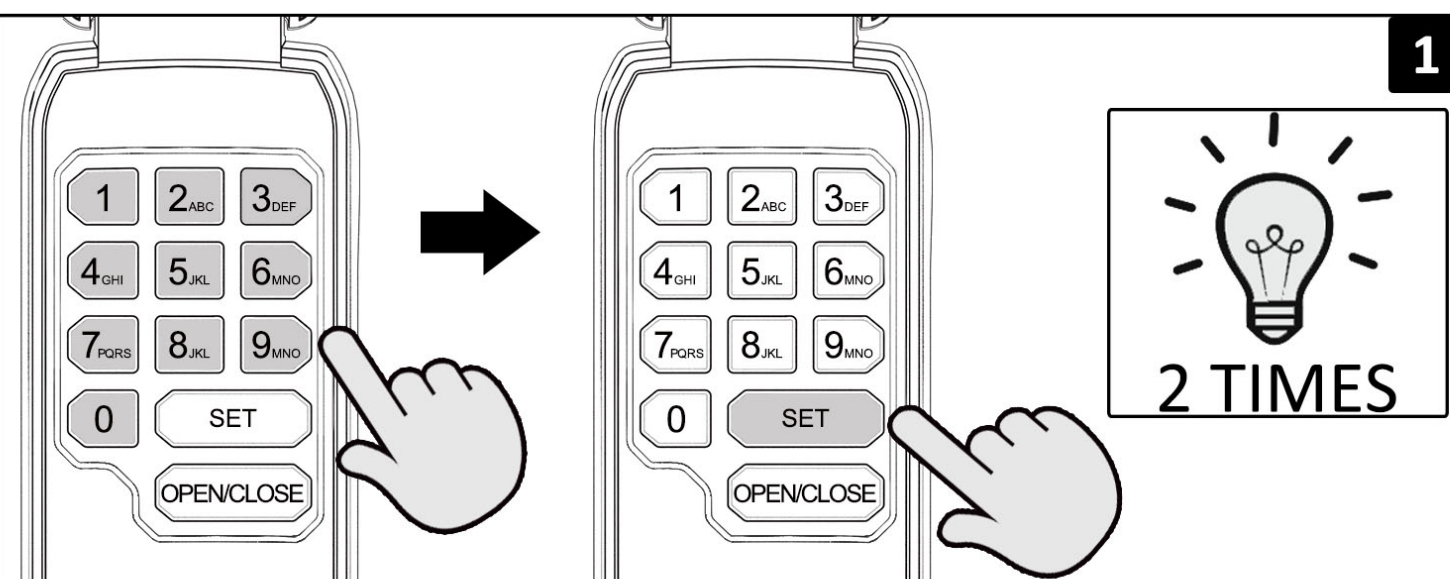


3 Press the " OPEN/CLOSE " key. Then the motor unit lights blink three times.

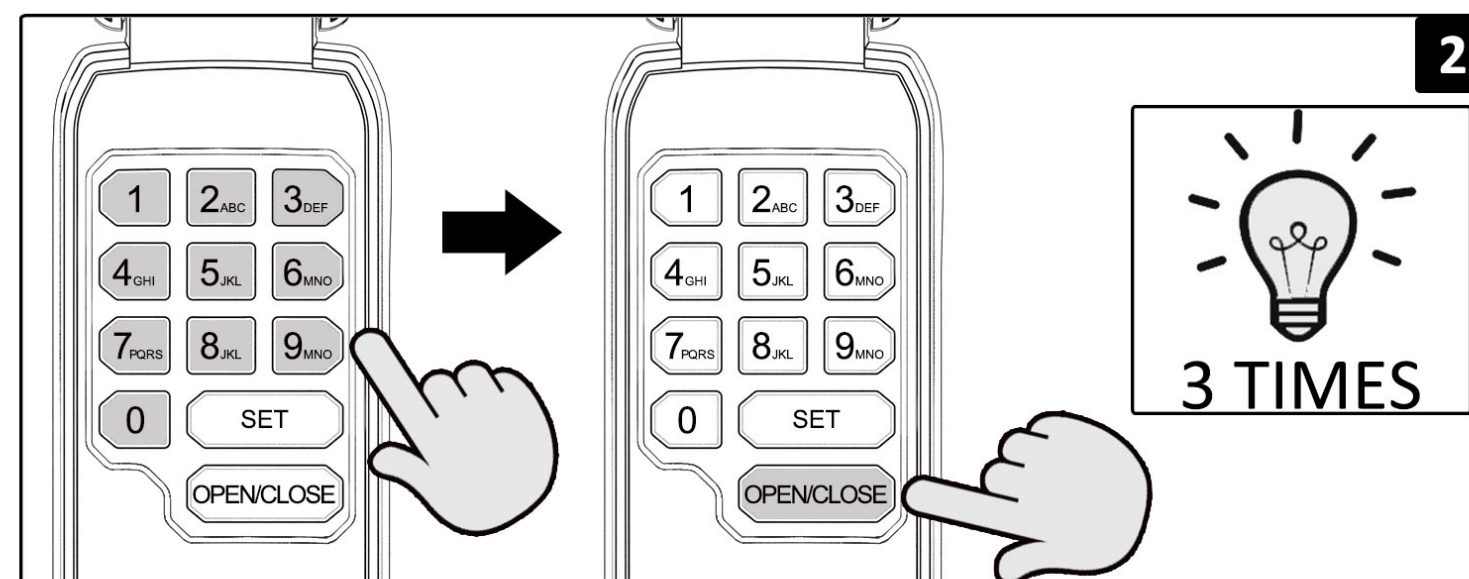


According to the above steps, the master password set success. (*One key to open and close until the door is fully closed*)

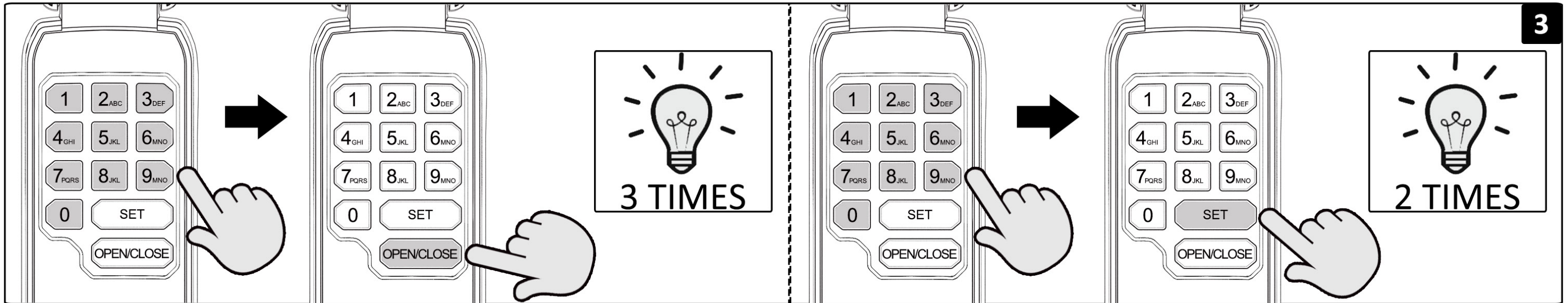
SET A TEMPORARY PASSWORD



Enter the master password, hold the "SET" key. Then the motor unit lights blink twice.



Enter new three to six digit temporary PIN. Hold the " OPEN/CLOSE " key until motor unit lights blink three times.



Enter **number of hours**(1~255) for temp PIN to last and hold the“OPEN/CLOSE”key until motor unit lights blink three times. | Enter **number of openings**(1~255) for temp PIN to last and hold the“SET”key until motor unit lights will blink twice.

According to the above steps , a temporary password set success.

INSTALLATION

1

- The wireless keyless entry must be mounted at least 5 feet (1.5m) above the floor out of the reach of children and away from any moving door part.
- Drill a 1/8" (3.2mm) pilot hole for the top mounting screw (included).
- Install a screw into the pilot hole , leaving a 1/8" (3.2mm) between the wall and the screw.

2

- Remove battery cover and battery.
- Hang the keyless entry through the slot on back over the screw.
- Mark and drill a pilot hole for the bottom screw.

3

- Secure the keyless entry to wall by a screw.(DO NOT overtighten).
- Reinstall battery cover and battery.

REPLACE THE BATTERY