

HAUNTED
LIVING™

ITEM #5267928
MODEL #60390

BLUETOOTH®
REAPER WITH GUITAR



Questions, problems, missing parts? Before returning to your retailer, call our customer service department at 888-251-1006 8 a.m. - 8 p.m., EST, Monday - Sunday. You could also contact us at partsplus@lowes.com.

SAFETY INFORMATION

Please read and understand this entire manual before attempting to assemble, operate or install the product.

- Battery installation and removal should be performed by an adult.
- Contains (4) AA 1.5 volt alkaline batteries. Batteries are not rechargeable.
- Batteries are harmful if swallowed. Keep away from young children.
- Remove batteries when not in use.
- Use only batteries recommended in the instructions.
- Do not mix new and used batteries.
- Do not mix alkaline, carbon-zinc, nickel-cadmium, rechargeable or different types of batteries.
- Be mindful to insert batteries with the correct polarity (+/-) as indicated.
- Remove all exhausted batteries.
- Rechargeable batteries are only to be charged under adult supervision.
- Rechargeable batteries are to be removed from the item before being charged.
- Non-rechargeable batteries are not to be recharged.
- The supply terminals are not to be short-circuited.
- Always dispose of exhausted batteries properly.
- Do NOT dispose of batteries in fire, they may leak or explode.

WARNING

- **Warning Risk of injury to persons. Read and understand instruction manual before use.**
- Warning: CHOKING HAZARD! Small parts. This item is not a toy. For decoration only.
- Do not turn item on until you have completely finished assembly.
- Stay clear of item while operating.
- Do not place item on uneven ground.
- Do not place weight on item while in operation.

PREPARATION

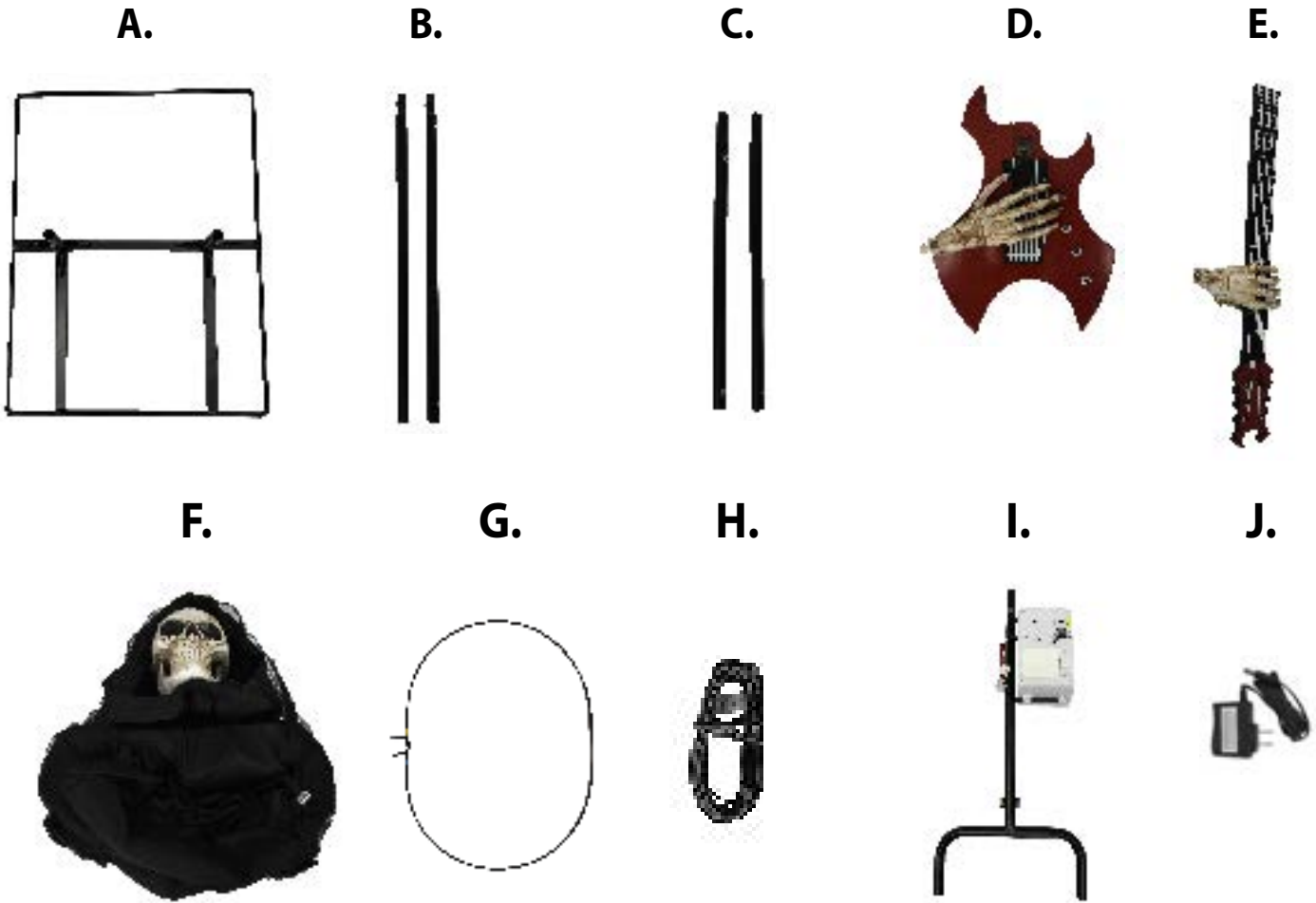
ADULT ASSEMBLY REQUIRED

Before beginning assembly of product, make sure all parts are present. Compare parts with package contents list and hardware contents list. If any part is missing or damaged, do not attempt to assemble the product.

No tools required for assembly.

Estimated Assembly Time: 8 minutes

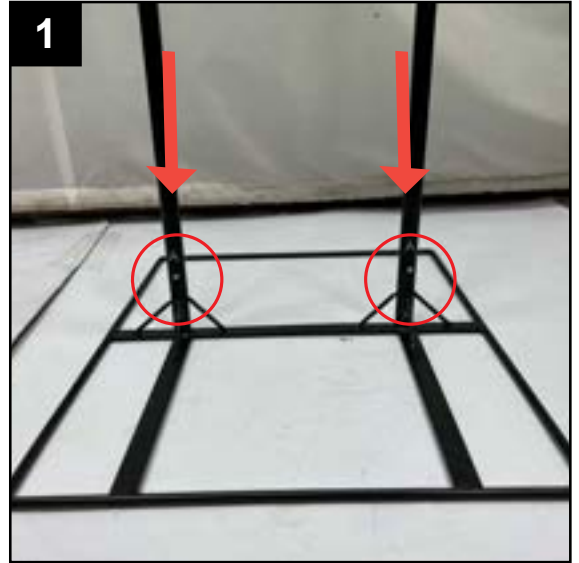
PACKAGE CONTENTS



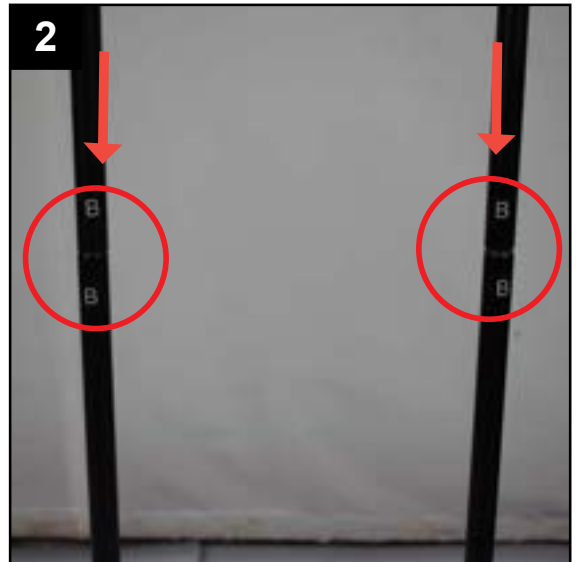
PART	DESCRIPTION	QUANTITY
A	Metal Stand	1
B	Lower Poles	2
C	Upper Poles	2
D	Guitar Body and Hand	1
E	Guitar Neck and Hand	1
F	Head and Body	1
G	Wire Waist and Back Frame	1
H	Input Output wire	1
I	Spine and Control Box	1
J	6V2A Adapter	1

ASSEMBLY INSTRUCTIONS

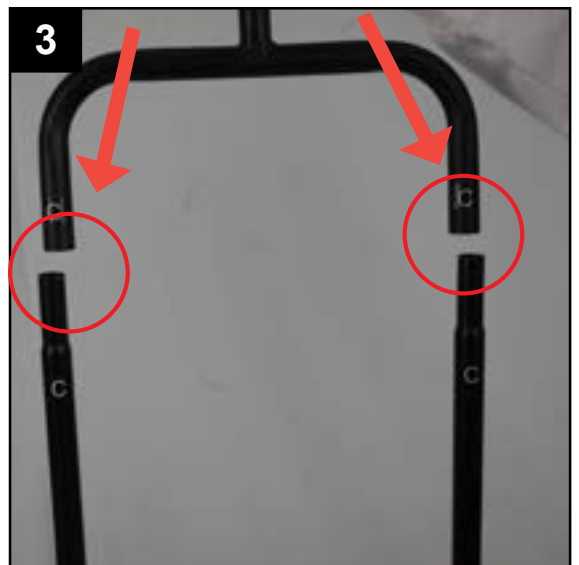
1. Insert and snap lock 2 lower poles into the metal base. (Match A to A)



2. Insert and snap lock the upper poles to the lower poles. (Match B to B)

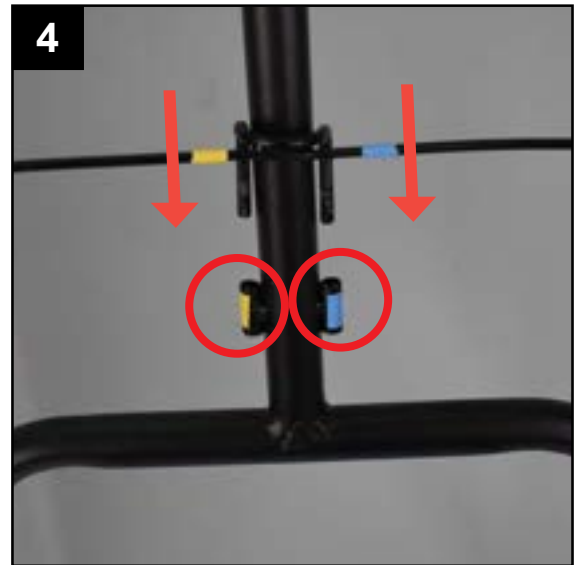


3. Insert and snap lock the spine and control box to the upper poles. (Match C to C)

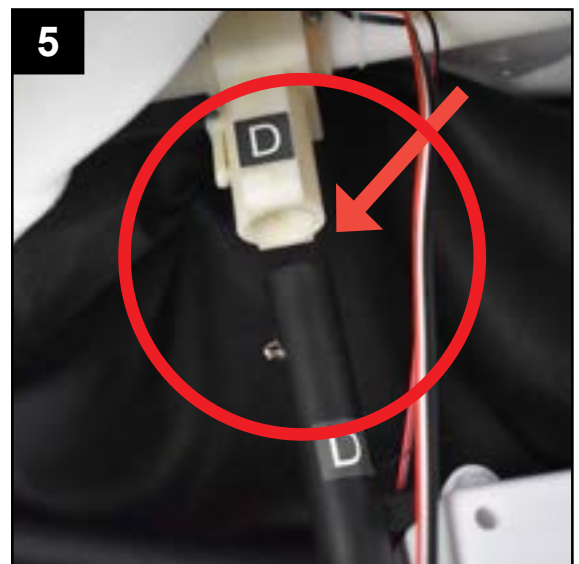


ASSEMBLY INSTRUCTIONS

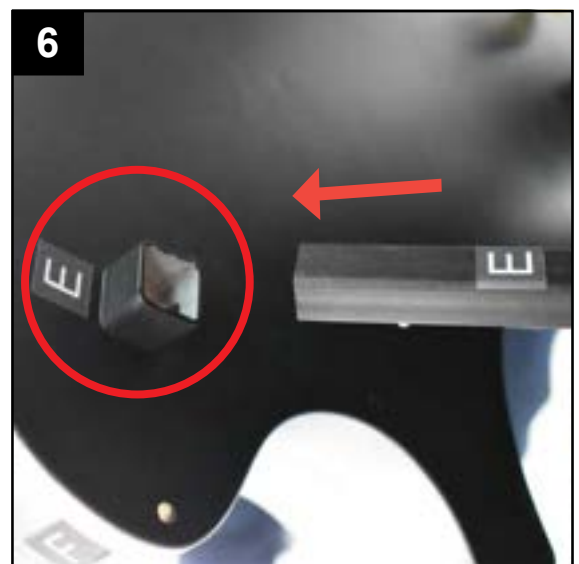
4. Insert the waist and back frame into the spine pole and control box. Match yellow to yellow, and blue to blue.



5. Lift the fabric and snap lock the body and head to the spine pole and control box. (Match D to D)



6. Open the front of the clothing and locate the pole marked E. Snap lock the guitar body and hand to the pole on the spine and control box. (Match E to E)



ASSEMBLY INSTRUCTIONS

7. Snap lock the guitar neck with hand to the guitar body and hand. (Match F to F)

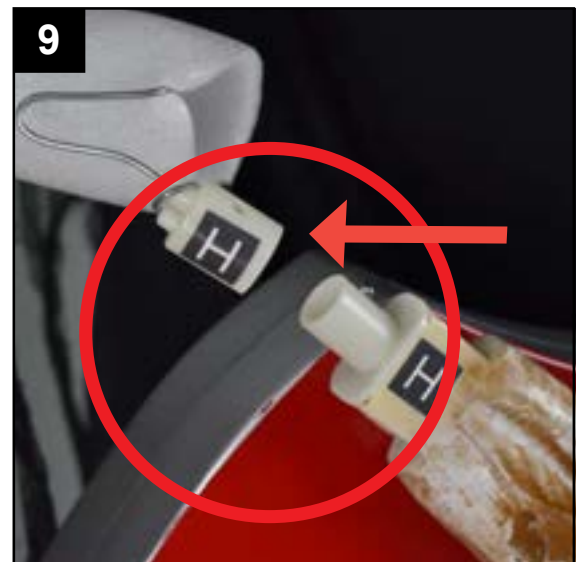
NOTE: This is a one time snap lock. Once the guitar neck is assembled to the body it cannot be disconnected.



8. Insert and snap lock the guitar neck hand to the left arm located on the body and head. (Match G to G)

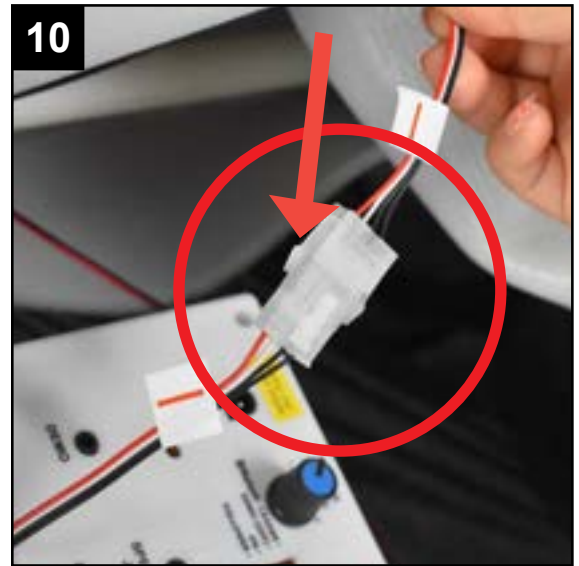


9. Insert and snap lock the guitar body hand to the right arm located on the body and head. (Connect H to H)



ASSEMBLY INSTRUCTIONS

10. Connect the wire from the control box to the wire from the body and head. (Connect I to I)



11. Connect the wire from the control box to the wire from the body and head. (Connect J to J)

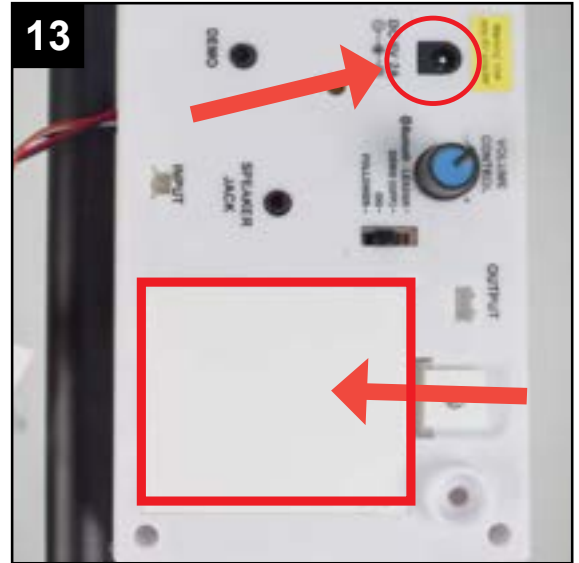


12. Attach the hook and loop fastener on both sleeves to the hook and loop fasteners located on the backs of both hands.



ASSEMBLY INSTRUCTIONS

13. Replace and insert 4 fresh AA alkaline (recommended) batteries into the battery compartment or insert the 6V2A adapter (included) into the adapter jack located on the control box.



OPERATING/BLUETOOTH PAIRING INSTRUCTIONS

ON SWITCH POSITION

Move the switch to the ON position located on the control box.

Move in front of the item or make a loud sound (clap) to activate the item. This mode will play the Reaper Band song and also send a signal to a follower device/additional band member (Drummer) when wired together on the control box. (Drummer sold separately)

Turn item to DEMO/OFF position when not in use.



BLUETOOTH LEADER SWITCH POSITION

Move the switch to the BLUETOOTH LEADER position on the control box to play your own music/playlist. Locate the name REAPER BAND on your phone/device and pair.

When your music is playing the item will automatically activate.

**FOLLOWER SWITCH ONLY USED WITH ADDITIONAL ITEM.
FORGET/UNPAIR YOUR DEVICE TO CONNECT TO A NEW DEVICE.**



LEADER SWITCH POSITION



FOLLOWER SWITCH POSITION

OPTIONAL MULTIPLE ITEM BAND SETUP

1. Insert the INPUT/OUTPUT WIRE into the OUTPUT jack.
2. Move the switch into the BLUETOOTH® LEADER position.
3. Insert the INPUT/OUTPUT WIRE into the INPUT jack on the second band member.
4. Move the switch on the second band member to FOLLOWER.



LEADER SWITCH POSITION



FOLLOWER SWITCH POSITION

LEADER



FOLLOWER



OPTIONAL DEMO SET UP

FOOTPAD/PUSH BUTTON IS NOT INCLUDED. MUST BE PURCHASED SEPARATELY.

1. Insert the cable from optional footpad/push button into the jack labeled DEMO on the CONTROL BOX.
 2. Place the switch in the DEMO position to enable DEMO activation.
 3. Step on the footpad or press push button to activate the scary sequence!
- * Footpads and push buttons are sold separately and can be purchased at www.tekkyaccessories.com



OPTIONAL EXTERNAL SPEAKER SET UP

EXTERNAL SPEAKER IS NOT INCLUDED. MUST BE PURCHASED SEPARATELY.

1. Plug speaker cord into the jack labeled SPEAKER JACK located on the CONTROL BOX.
2. Use volume knob on external speaker to control volume levels.



CARE AND MAINTENANCE

- STORE IN A COOL AND DRY ENVIRONMENT.
- IN INCLEMENT WEATHER BRING ITEM INDOORS.
- SURFACE WASHABLE ONLY. DO NOT USE ANY HARSH OR ABRASIVE CLEANING AGENTS.
- REMOVE BATTERIES WHEN STORING ITEM FOR LONG PERIODS OF TIME.

TROUBLESHOOTING

PROBLEM	POSSIBLE CAUSE	CORRECTIVE ACTION
Item will not activate.	<ul style="list-style-type: none"> • 6V 2A adapter is not plugged in. • Switch on control box is not in the DEMO/OFF position. • Batteries are not inserted correctly. 	<ul style="list-style-type: none"> • Check 6V 2A adapter is plugged in and securely inserted into the control box. • Move switch to Bluetooth®/Leader or ON positions • Install batteries with positive and negative in the correct positions.
You only hear item sound but no item activation.	<ul style="list-style-type: none"> • Wire from the control box to head is not connected. 	<ul style="list-style-type: none"> • Check that the J wire from the control box is securely connected.
You cannot connect to Bluetooth® on NEW device.	<ul style="list-style-type: none"> • Prior device is still connected to REAPER BAND Bluetooth®. 	<ul style="list-style-type: none"> • Unpair/forget prior Bluetooth® device
Item has no sound while operating.	<ul style="list-style-type: none"> • Volume knob is turned all the way down. 	<ul style="list-style-type: none"> • Adjust volume knob to desired volume.



visit us at tekkydesign.com

Requires 6V 2A adapter (included) or 4AA batteries. (included)

ALL NEW MATERIALS:
METAL, Foam, PLASTIC, POLYESTER
Surface washable only.

Bluetooth Reaper with Guitar™ is a trademark of Tekky. Copyright © 2023 Tekky.

All Rights Reserved.

MADE IN CHINA

The Bluetooth® word mark and logos are registered trademarks owned by Bluetooth SIG, Inc. and any use of such marks by JCW Investments, Inc. DBA Tekky Toys is under license. Other trademarks and trade names are those of their respective owners.

SMART PHONE SCAN

SETUP VIDEO



FCC STATEMENT

This device complies with part 15 of the FCC Rules. Operation is subject to the following two conditions: (1) This device may not cause harmful interference, and (2) this device must accept any interference received, including interference that may cause undesired operation.

This device must not be co-located or operating in conjunction with any other antenna or transmitter.

This equipment has been tested and found to comply with the limits for a Class B digital device, pursuant to part 15 of the FCC Rules. These limits are designed to provide reasonable protection against harmful interference in a residential installation. This equipment generates, uses and can radiate radio frequency energy and, if not installed and used in accordance with the instructions, may cause harmful interference to radio communications. However, there is no guarantee that interference will not occur in a particular installation. If this equipment does cause harmful interference to radio or television reception, which can be determined by turning the equipment off and on, the user is encouraged to try to correct the interference by one or more of the following measures:

- Reorient or relocate the receiving antenna.
- Increase the separation between the equipment and receiver.
- Connect the equipment into an outlet on a circuit different from that to which the receiver is connected.
- Consult the dealer or an experienced radio/TV technician for help.

FCC ID: 2AAAI-REAPER-BAND

To comply with FCC's RF radiation exposure limits for general population/uncontrolled exposure, this device must be installed to provide a separation distance of at least 20cm from all persons.

WARNING: Any changes or modifications to this unit not expressly approved by the party responsible for compliance could void the user's authority to operate the equipment.