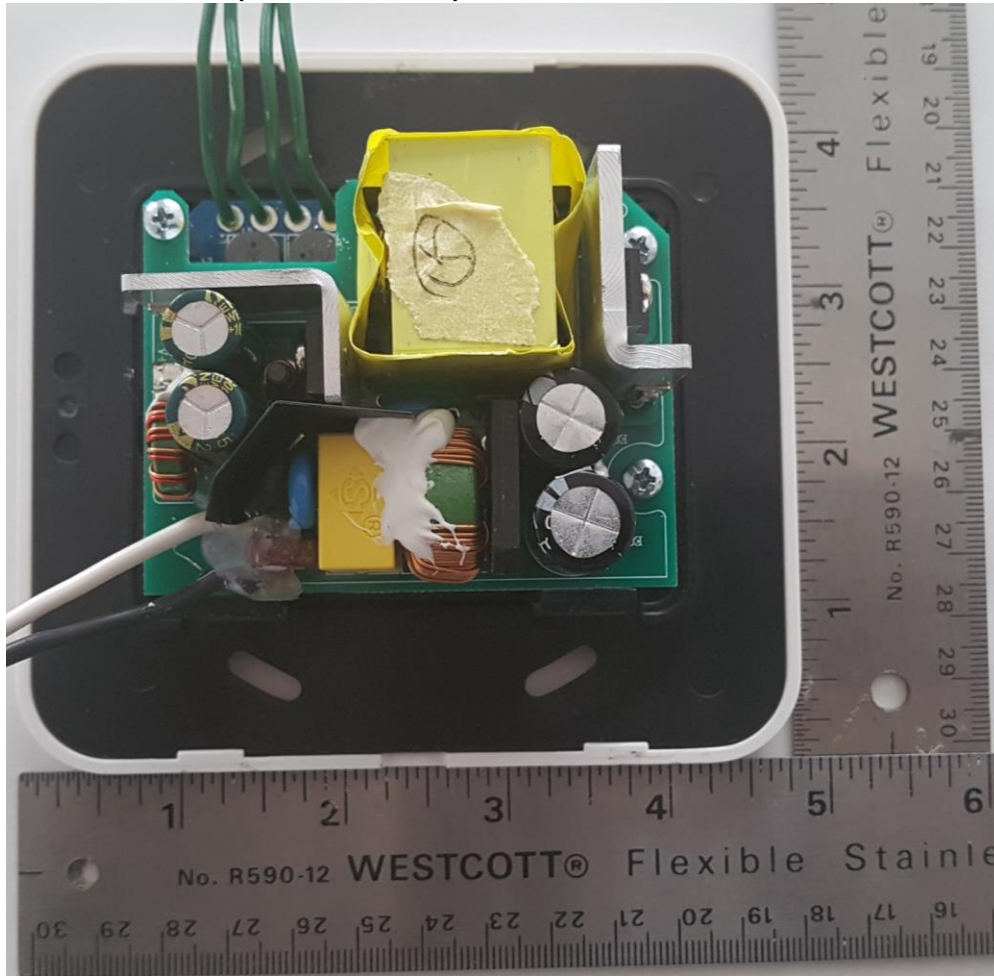


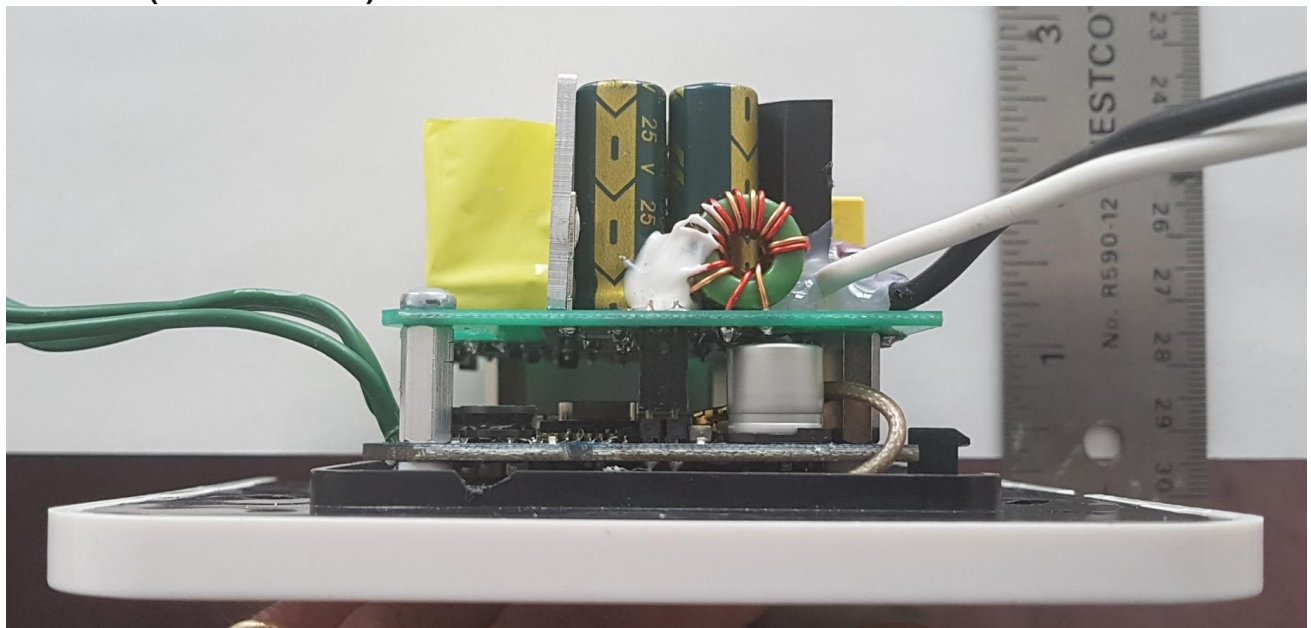
FCC ID: 2AA9N-LASY40
IC ID: 11506A-LASY40

Internal Photos

Inside rear view (cover removed)



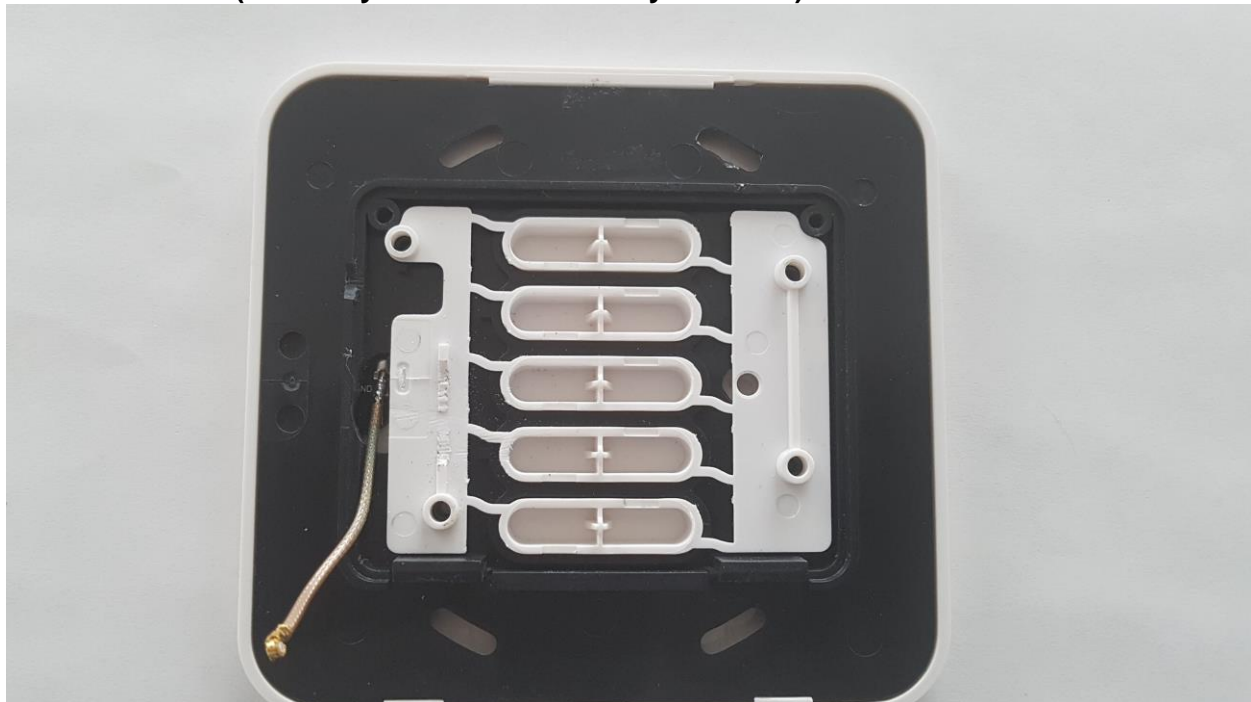
Side view (cover removed)



Inside rear view (Power supply PCB assembly removed)



Inside rear view (Soul Play main PCB assembly removed)



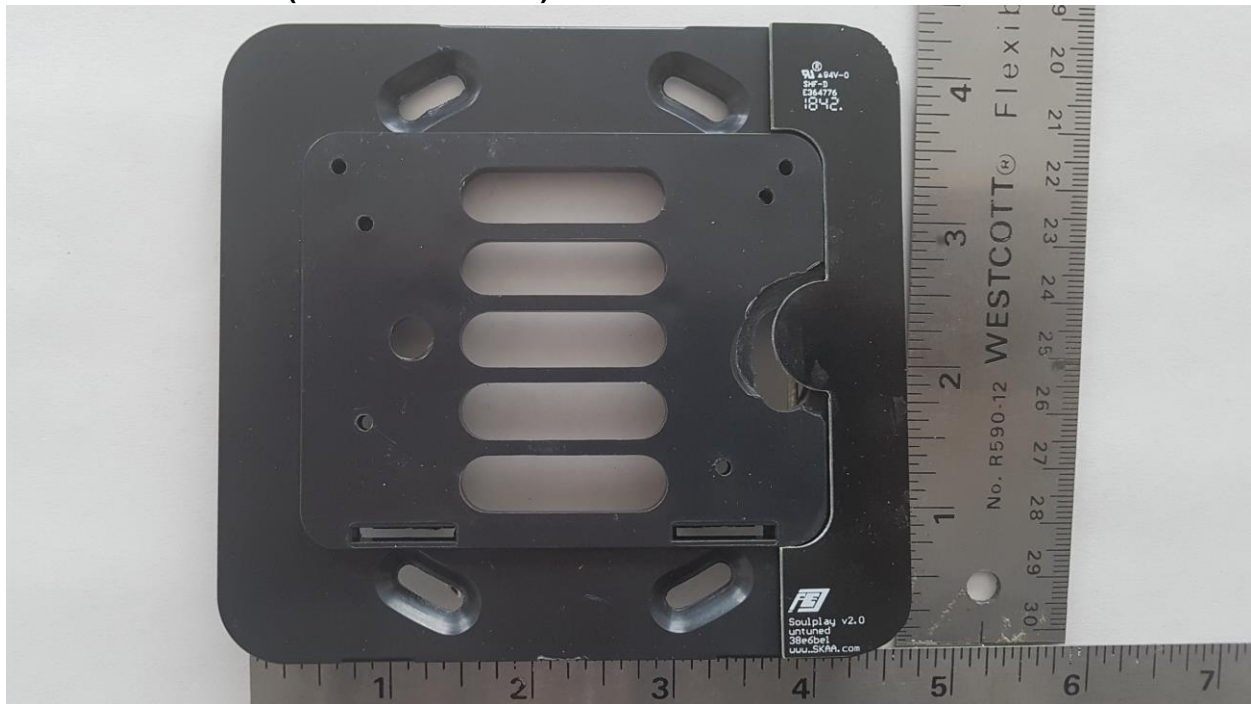
Inside rear view (Button assembly removed)



Inside rear view (black front cover and antenna removed)



Front of front cover (and antenna view)



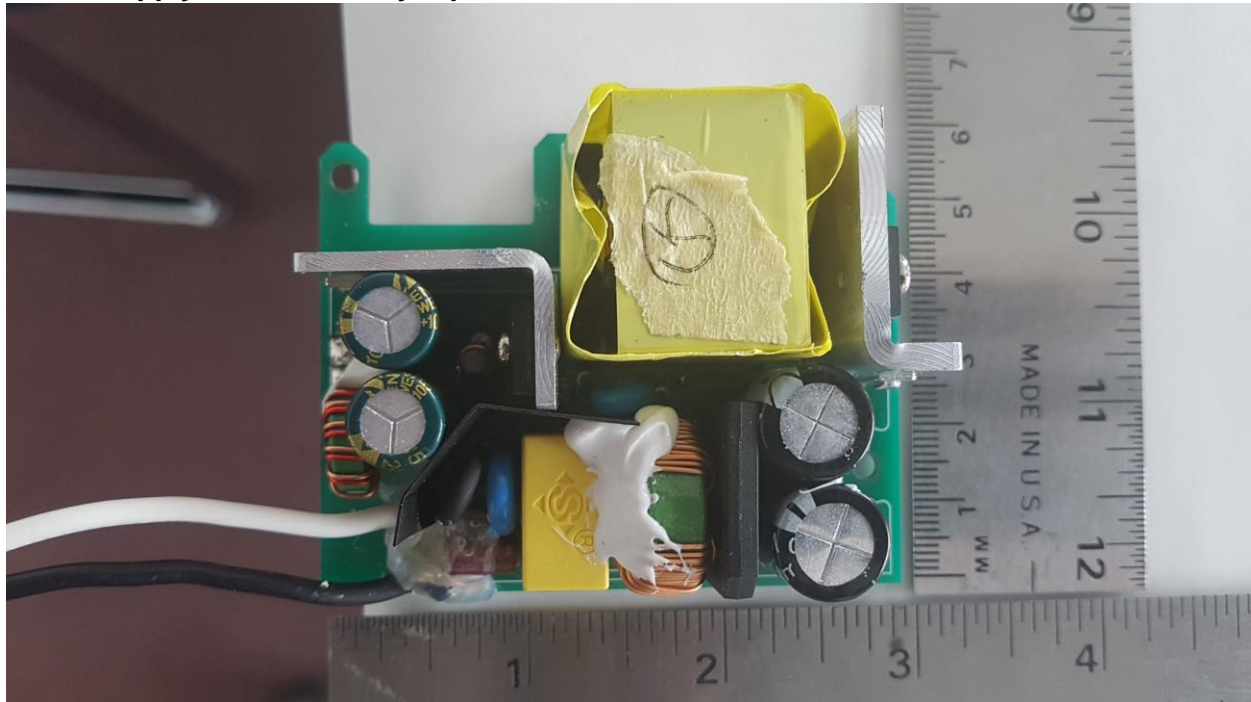
Front antenna connector side (used with Nadja Ginseng radio)



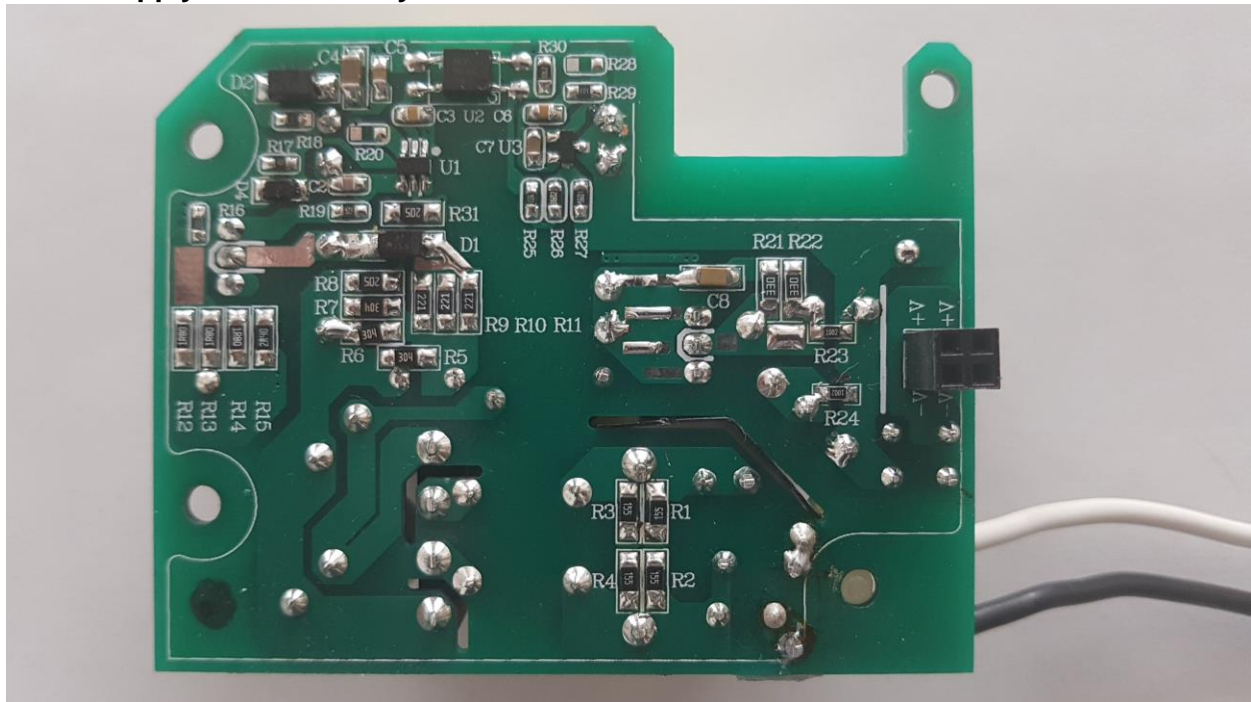
Front antenna other side (used with Nadja Ginseng radio)



Power supply PCB Assembly top view

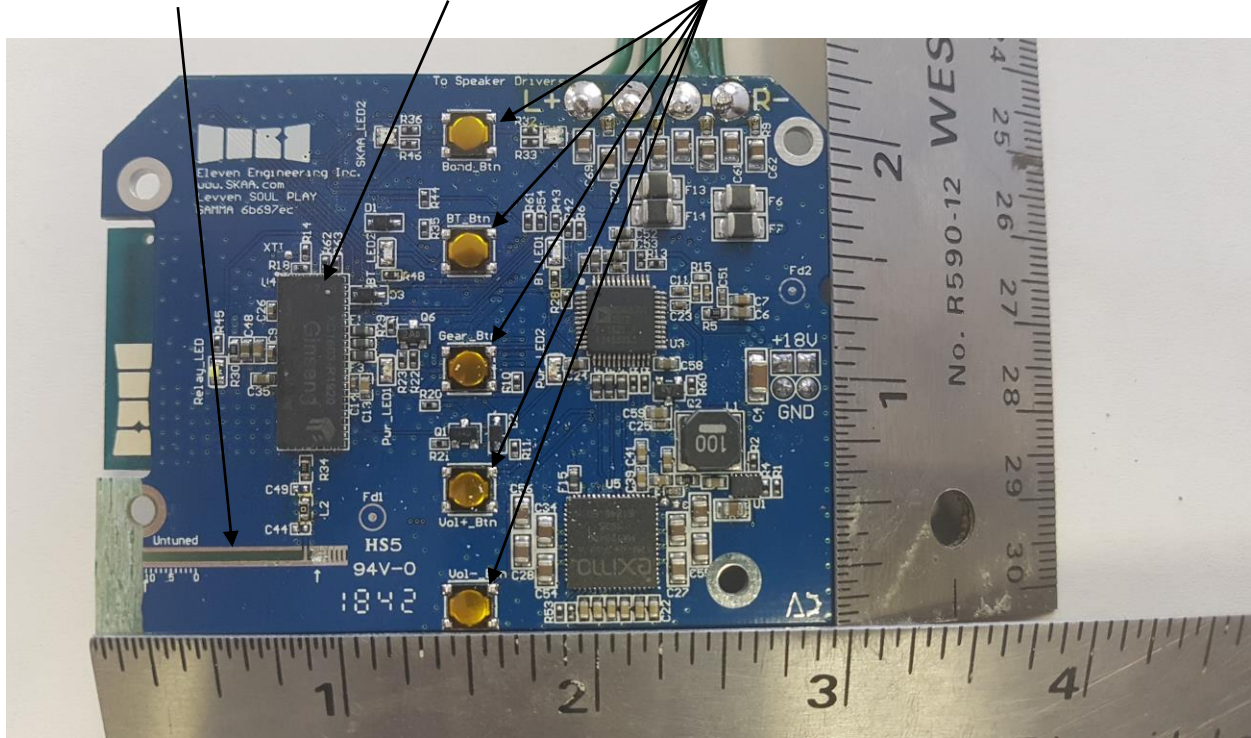


Power supply PCB Assembly bottom view



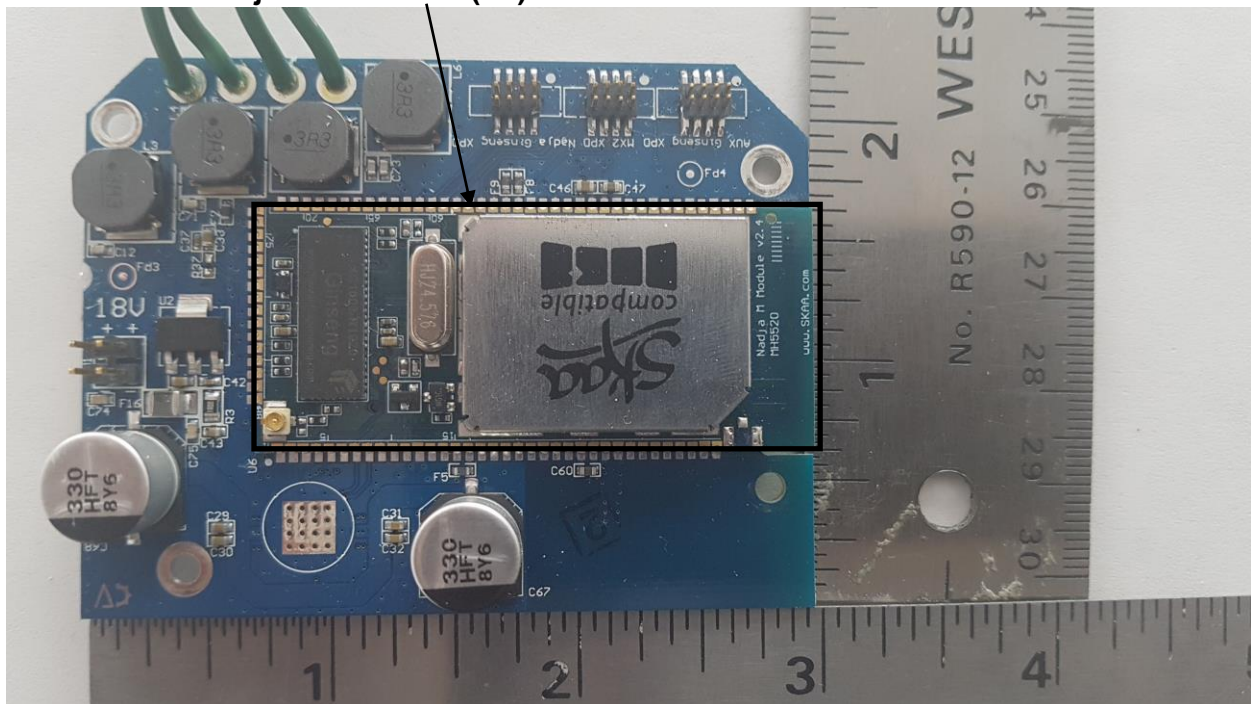
Soul Play PCB assembly solder side view

Ginseng antenna Ginseng radio IC(U4) Buttons

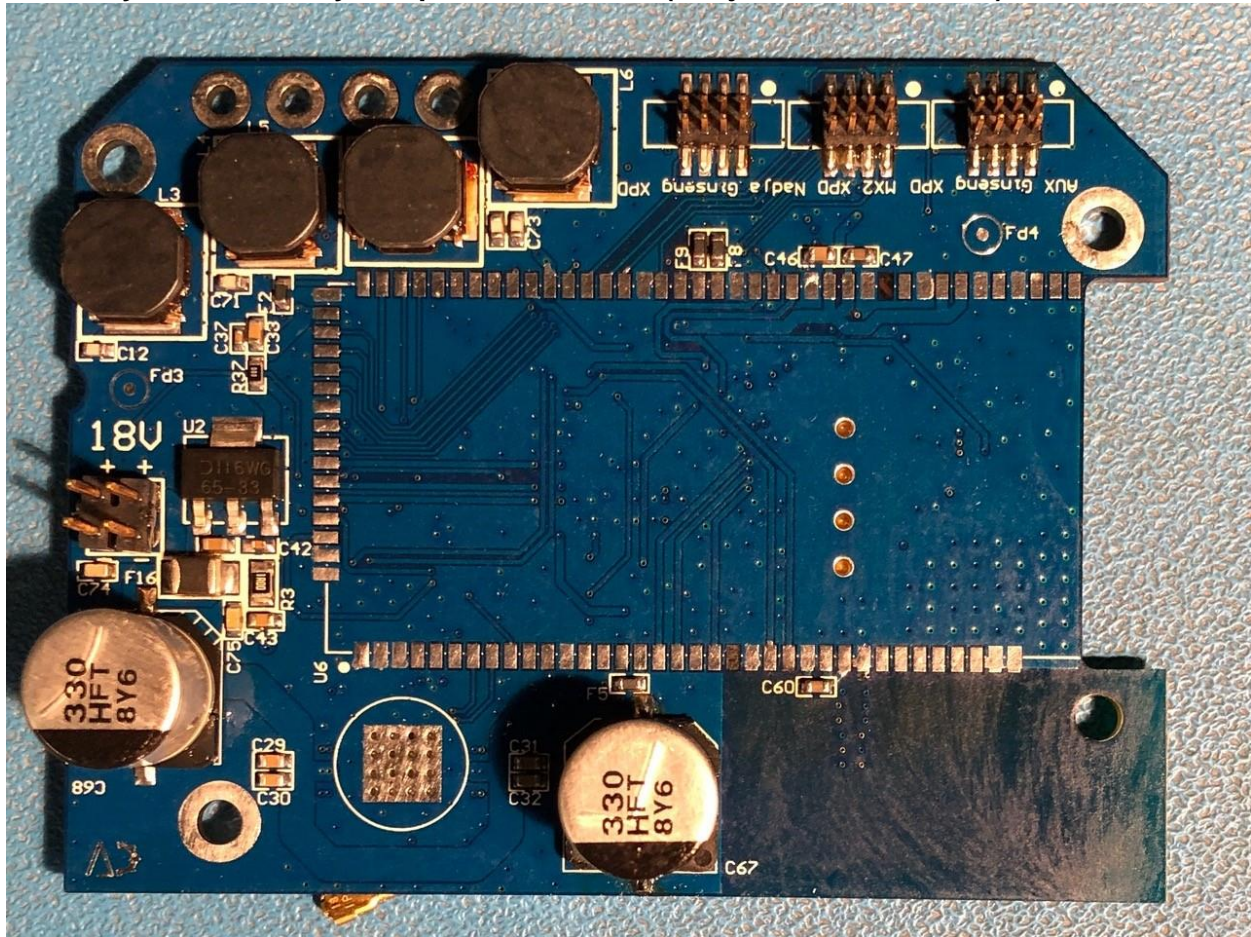


Soul Play PCB assembly component side view

Nadja radio module(U6)



Soul Play PCB assembly component side view (Nadja module removed)



FCC ID: 2AA9N-LASY40
IC ID: 11506A-LASY40

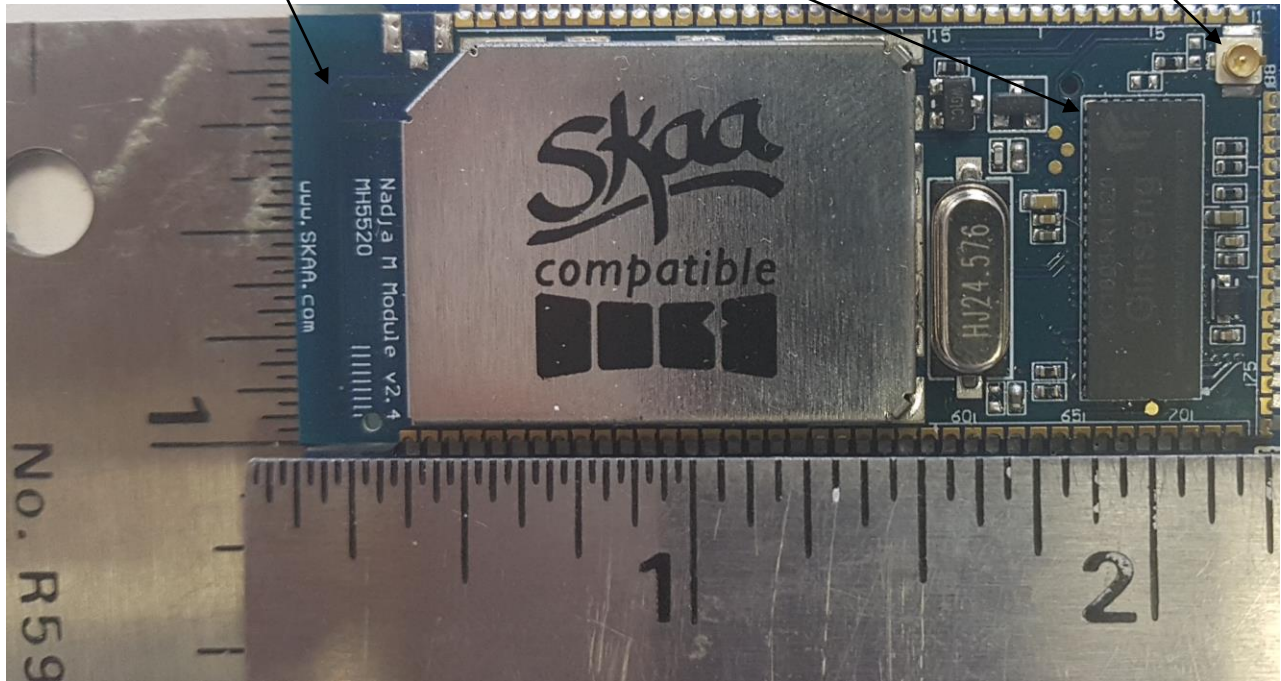
Internal Photos

Nadja PCB assembly component side view

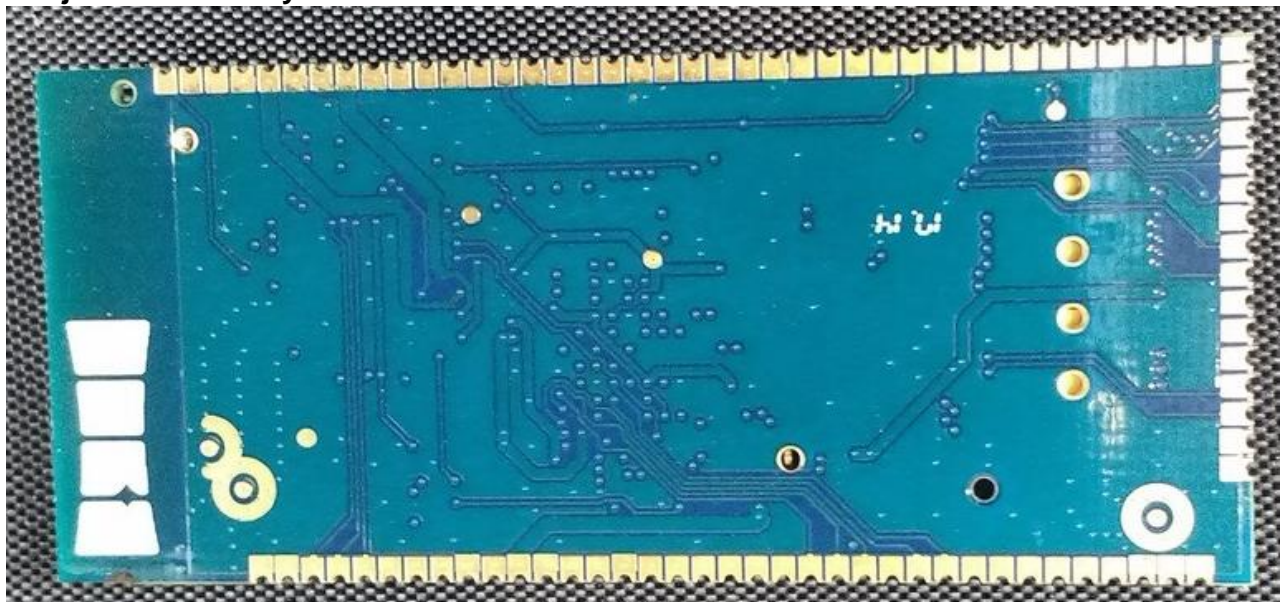
Nadja Bluetooth antenna

Nadja Ginseng IC

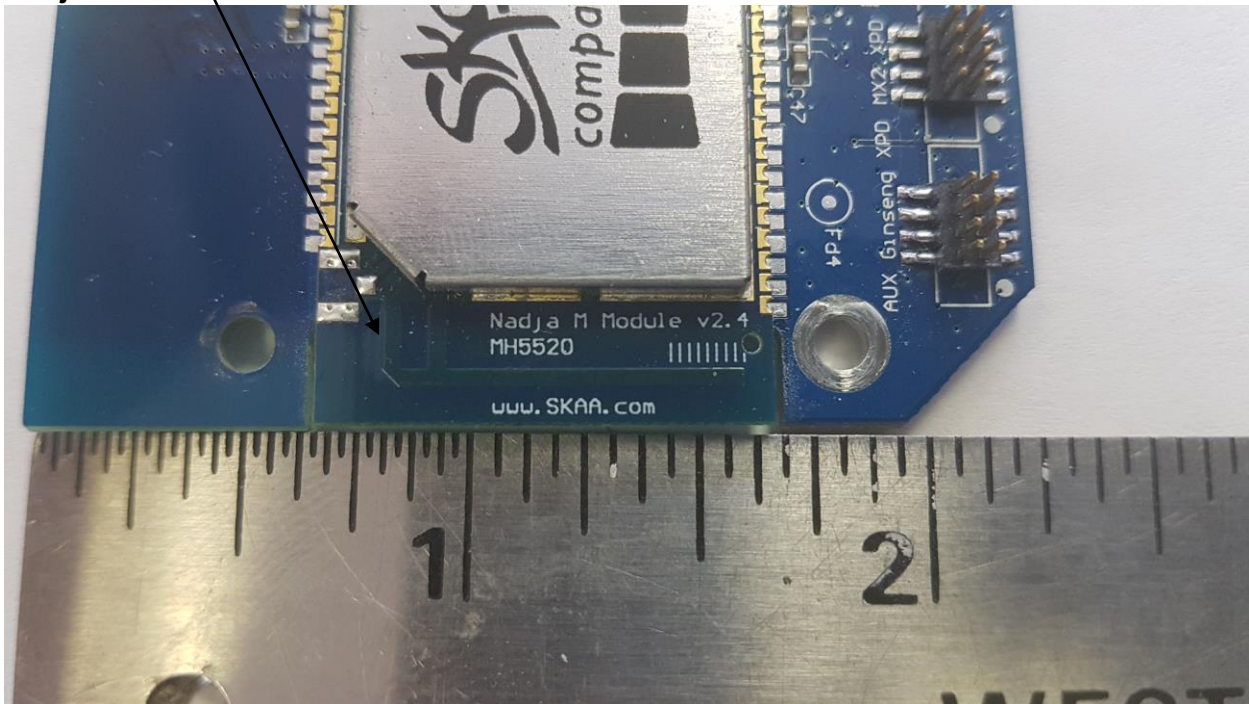
Nadja Ginseng antenna conn



Nadja PCB assembly solder side view



Nadja Bluetooth antenna



Nadja PCB assembly component side view (without shield)

