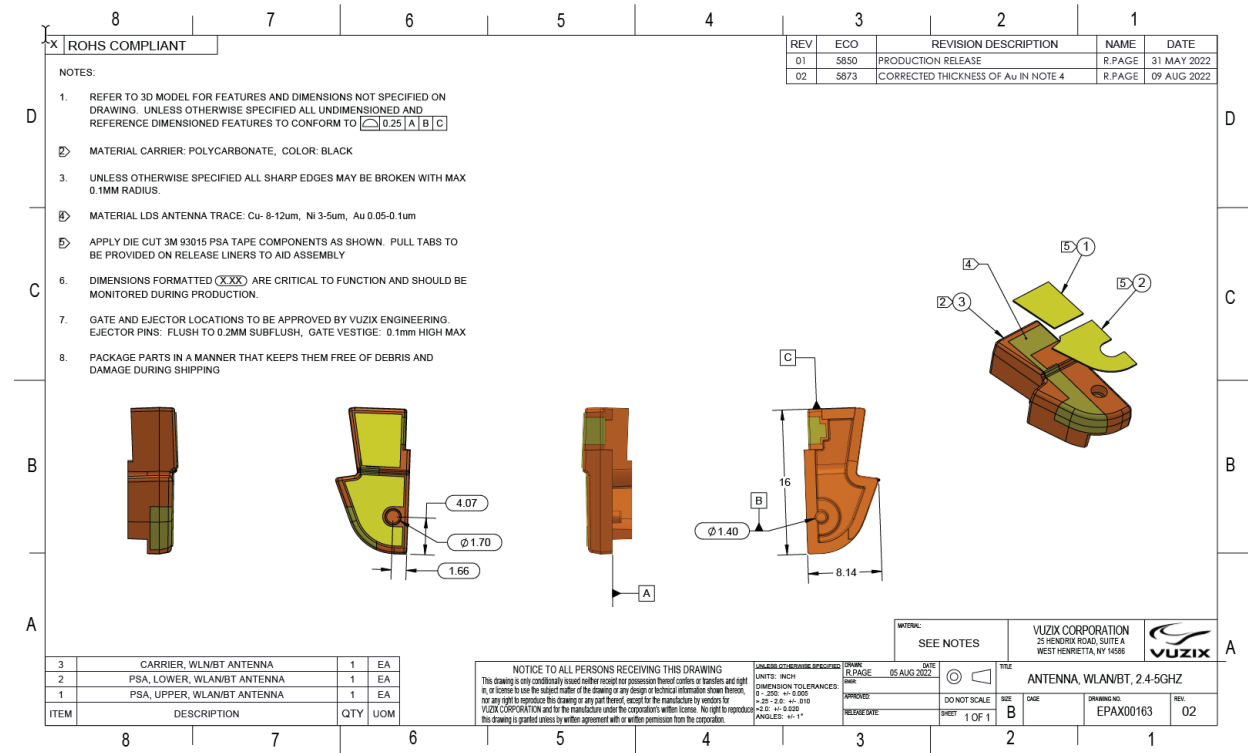


# Vuzix Shield (Model 492) Antenna Datasheet

## Drawing

Antenna model: EPAX00163



## Gain

Frequency (MHz)	Efficiency (%)	Efficiency (dB)	Peak gain (dBi)
2400	44	-3.6	0.7
2405	44	-3.6	0.7
2410	44	-3.5	0.7
2415	44	-3.6	0.7
2420	44	-3.6	0.7
2425	44	-3.6	0.7
2430	44	-3.6	0.7
2435	43	-3.6	0.7
2440	43	-3.6	0.8
2445	43	-3.6	0.9
2450	43	-3.6	0.9

2455	44	-3.6	1.1
2460	44	-3.6	1.5
2465	43	-3.6	1.2
2470	43	-3.6	1.3
2475	43	-3.7	1.4
2480	43	-3.7	1.4
2485	43	-3.7	1.5
2490	43	-3.7	1.5
5150	37	-4.3	-0.6
5155	37	-4.3	-0.7
5160	38	-4.2	-0.6
5165	39	-4.1	-0.5
5170	39	-4.1	-0.5
5175	39	-4.1	-0.6
5180	38	-4.2	-0.7
5185	39	-4.1	-0.6
5190	39	-4.1	-0.6
5195	39	-4.1	-0.6
5200	40	-4.0	-0.6
5205	41	-3.9	-0.4
5210	40	-3.9	-0.4
5215	39	-4.1	-0.6
5220	40	-4.0	-0.5
5225	41	-3.8	-0.3
5230	42	-3.7	-0.2
5235	44	-3.6	-0.1
5240	44	-3.5	0.0
5245	44	-3.5	0.0
5250	43	-3.6	0.0
5255	41	-3.9	-0.3
5260	40	-3.9	-0.4
5265	43	-3.7	0.0
5270	44	-3.5	0.1
5275	46	-3.4	0.2
5280	46	-3.3	0.4
5285	45	-3.5	0.2
5290	42	-3.7	0.0
5295	42	-3.8	-0.1
5300	42	-3.8	-0.1
5305	44	-3.6	0.1
5310	46	-3.3	0.4
5315	47	-3.3	0.4

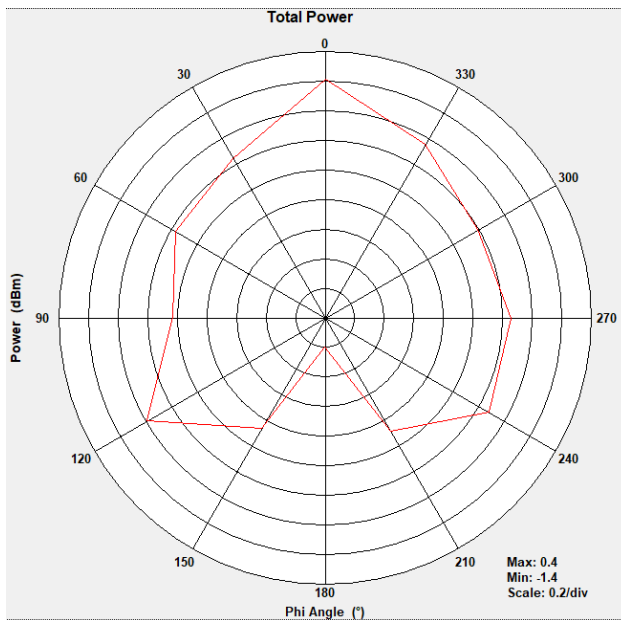
5320	47	-3.3	0.5
5325	46	-3.3	0.5
5330	44	-3.6	0.2
5335	44	-3.6	0.2
5340	46	-3.4	0.4
5345	48	-3.2	0.6
5350	49	-3.1	0.7
5355	48	-3.2	0.7
5360	47	-3.3	0.6
5365	47	-3.3	0.5
5370	46	-3.4	0.4
5375	45	-3.5	0.3
5380	47	-3.3	0.5
5385	48	-3.2	0.6
5390	47	-3.3	0.5
5395	46	-3.4	0.5
5400	46	-3.4	0.5
5405	45	-3.4	0.4
5410	46	-3.4	0.5
5415	47	-3.3	0.6
5420	47	-3.2	0.6
5425	48	-3.2	0.7
5430	47	-3.3	0.6
5435	45	-3.4	0.4
5440	45	-3.5	0.3
5445	47	-3.2	0.5
5450	49	-3.1	0.6
5455	49	-3.1	0.6
5460	50	-3.0	0.7
5465	48	-3.2	0.6
5470	46	-3.4	0.4
5475	45	-3.5	0.3
5480	45	-3.5	0.3
5485	48	-3.2	0.6
5490	51	-3.0	0.9
5495	51	-3.0	0.9
5500	50	-3.0	0.8
5505	50	-3.0	0.8
5510	47	-3.3	0.5
5515	46	-3.4	0.5
5520	49	-3.1	0.7
5525	51	-2.9	0.9
5530	54	-2.7	1.2

5535	54	-2.7	1.2
5540	52	-2.9	1.0
5545	51	-2.9	1.0
5550	50	-3.0	0.8
5555	48	-3.2	0.7
5560	51	-3.0	1.0
5565	53	-2.8	1.2
5570	52	-2.8	1.2
5575	52	-2.9	1.1
5580	52	-2.9	1.1
5585	51	-2.9	1.1
5590	51	-2.9	1.1
5595	51	-2.9	1.1
5600	53	-2.8	1.2
5605	54	-2.7	1.3
5610	53	-2.8	1.3
5615	52	-2.9	1.2
5620	51	-2.9	1.2
5625	52	-2.8	1.2
5630	52	-2.8	1.2
5635	53	-2.8	1.3
5640	54	-2.7	1.4
5645	54	-2.7	1.3
5650	51	-2.9	1.1
5655	51	-3.0	1.0
5660	51	-2.9	1.0
5665	52	-2.8	1.1
5670	53	-2.8	1.1
5675	52	-2.8	1.1
5680	52	-2.9	1.0
5685	51	-2.9	1.0
5690	48	-3.2	0.7
5695	48	-3.2	0.7
5700	51	-3.0	1.0
5705	52	-2.8	1.1
5710	53	-2.8	1.2
5715	53	-2.7	1.2
5720	52	-2.9	1.2
5725	51	-2.9	1.1
5730	50	-3.0	1.0
5735	49	-3.1	0.9
5740	52	-2.8	1.2
5745	54	-2.7	1.4

5750	53	-2.8	1.2
5755	53	-2.8	1.2
5760	52	-2.8	1.2
5765	50	-3.0	1.0
5770	50	-3.0	1.0
5775	50	-3.0	1.1
5780	51	-2.9	1.2
5785	52	-2.8	1.3
5790	51	-2.9	1.3
5795	51	-3.0	1.2
5800	51	-3.0	1.2
5805	50	-3.0	1.1
5810	49	-3.1	1.0
5815	50	-3.1	1.1
5820	50	-3.0	1.2
5825	50	-3.0	1.3
5830	49	-3.1	1.2
5835	48	-3.1	1.2
5840	49	-3.1	1.3
5845	49	-3.1	1.3
5850	50	-3.0	1.4

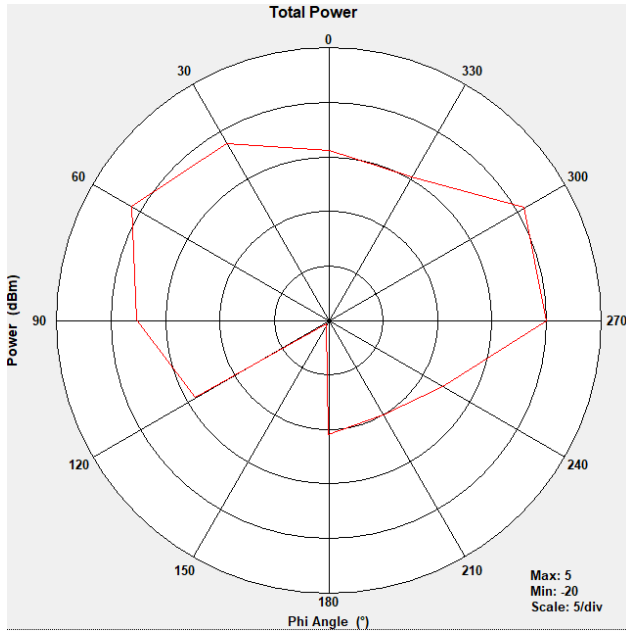
## Radiation Pattern

2.4GHz

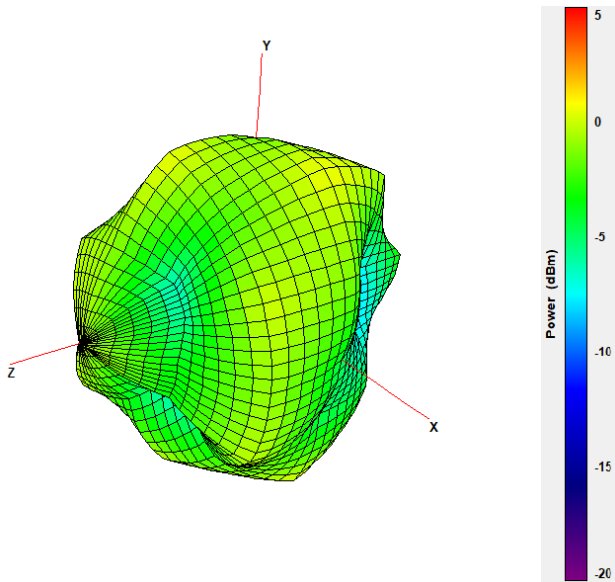


2440MHz Theta = 0

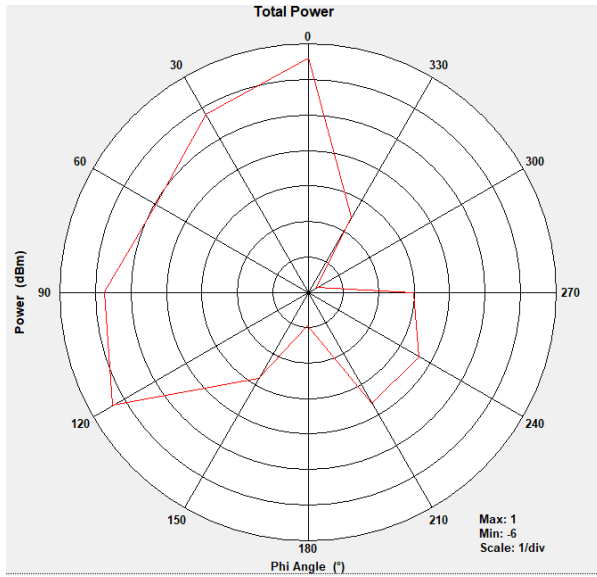
2440MHz Theta =90



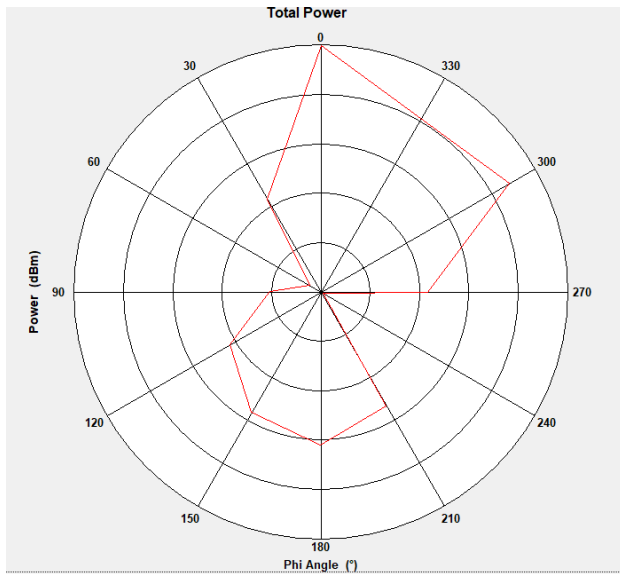
2440MHz 3D



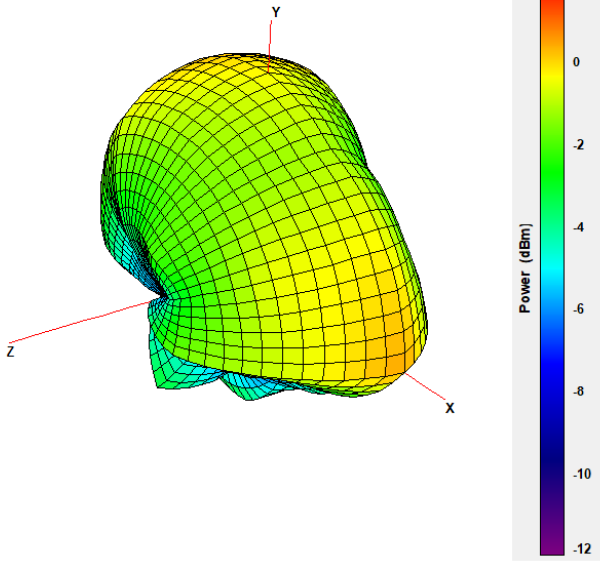
5GHz



5500MHz Theta = 0



5500MHz Theta = 90



5500MHz 3D