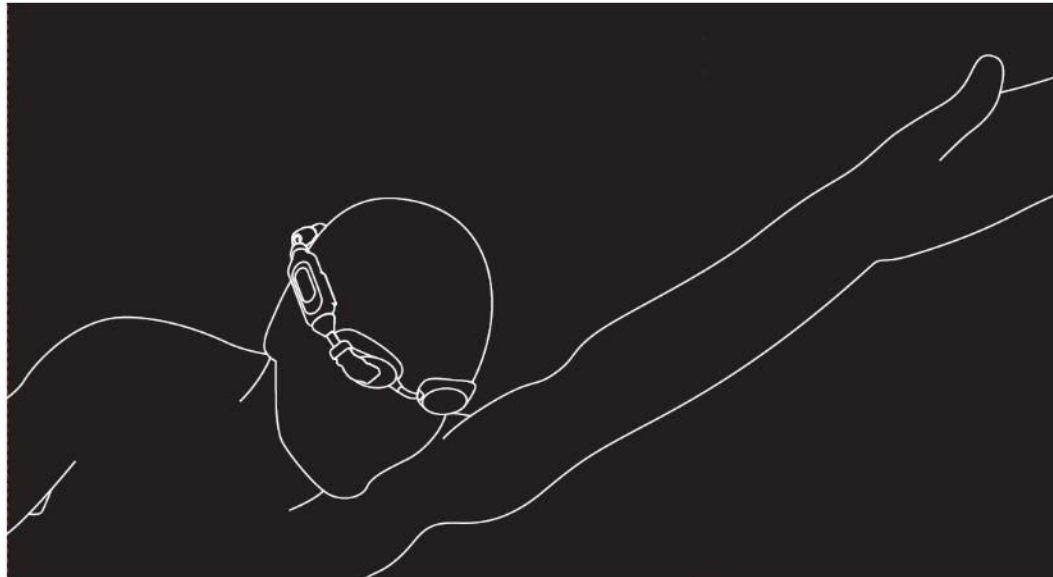


SMART SWIM™

VUZIX®

Quick Start Guide V0.2



CONGRATULATIONS ON YOUR NEW VUZIX SMART SWIM™

SMART SWIM™ is a wearable Android-based swim accessory designed for monitoring and tracking swim performance and enhancing training.

It has Wi-Fi connectivity and GPS right out of the box and includes:

- SMART SWIM™ viewer
- Goggles
- USB-A to Micro USB cable
- USB-A Splitter cable
- Grappling tool
- Bungies (5 sizes)
- Floats (6)
- Soft case for storage
- Battery (Not a waterproof battery)

CHARGING FOR THE FIRST TIME

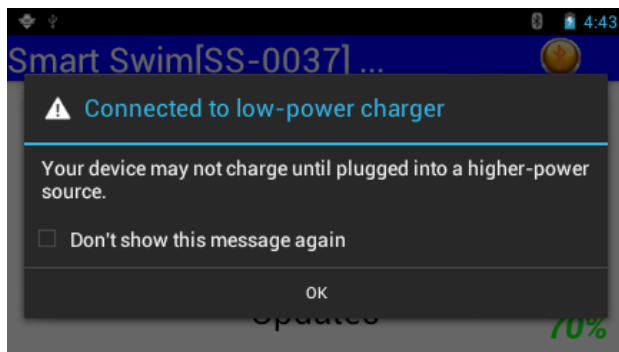
Charge battery before use with wall charger or similar USB power supply

Can take up to two hours if the battery is fully empty.

POWER ON

Press Power Button

Power on Smart Swim™



Press Forward Button to scroll through dialog

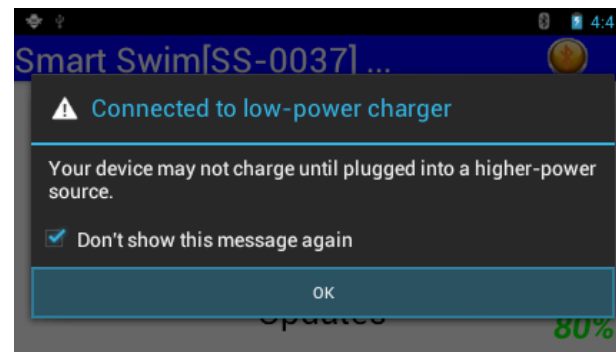
POWER OFF

Press and hold Power Button until menu displays

Press Right Button to select Power Off

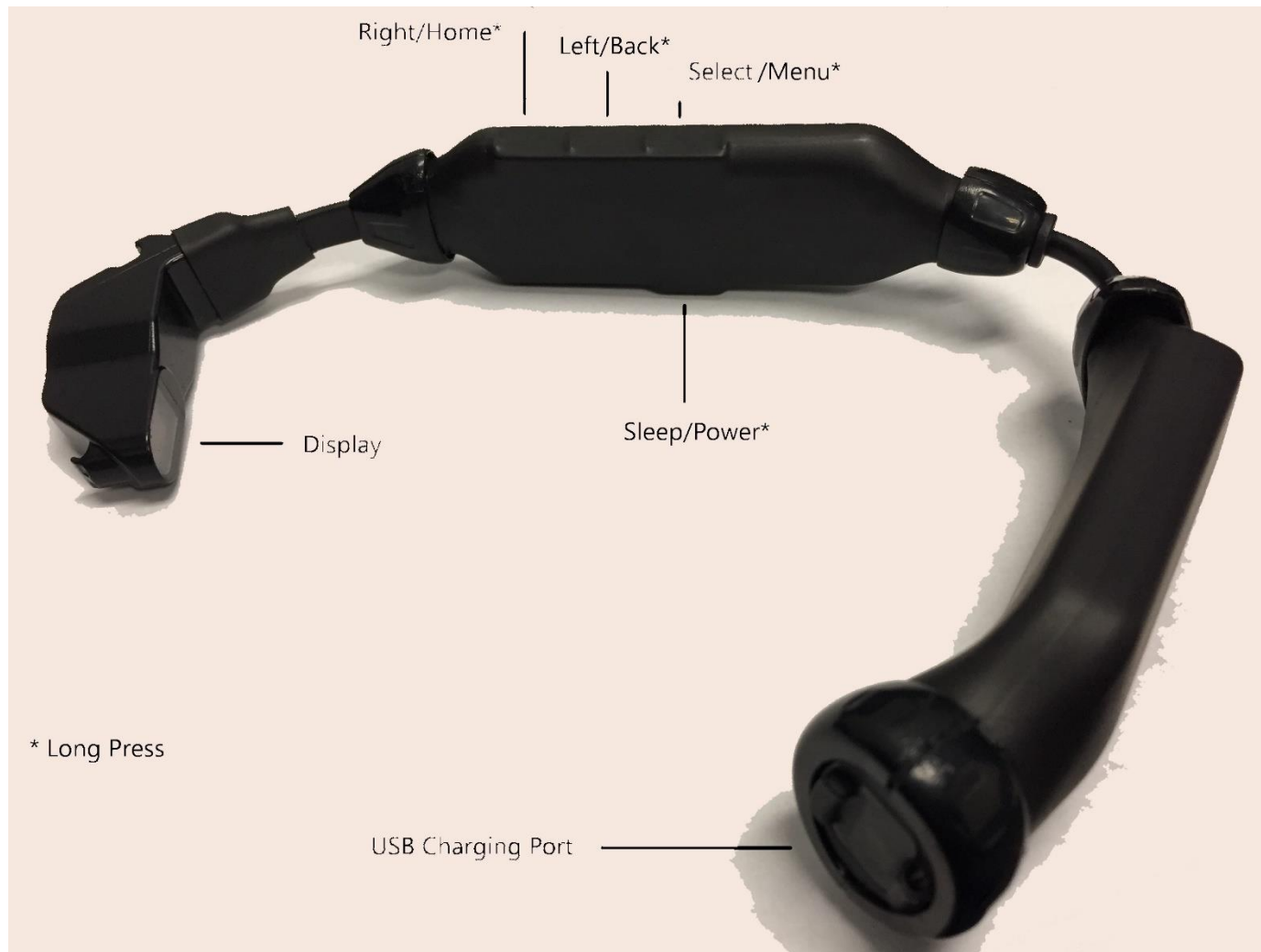
Press Select Button to power off

Dismiss Power Dialog



Press Select Button to dismiss power dialog

NAVIGATING THE SMART SWIM™



ASSEMBLING YOUR SMART SWIM™ SYSTEM – PART 1

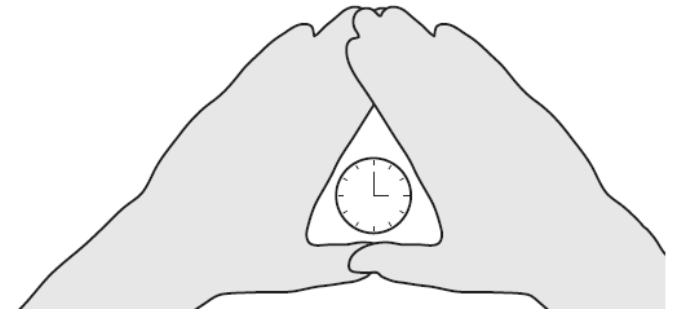
The Smart Swim and goggles come preassembled for right dominant eye. The viewer should be worn on the dominant eye.

The user can use as is, attach another pair of swim goggles or switch the viewer for left dominant eye use.

Before attaching the viewer to either side of swim goggles, determine your dominant eye for optimum use of SMART SWIM capabilities.

Once attached, the orientation can be changed:

- System Configure
- Select Eye Orientation



DETERMINE YOUR DOMINANT EYE

Extend your hands, placing them together to make a small triangle between your thumbs and knuckle. Keeping both eyes open, center a nearby object inside the triangle. Close each eye one at a time. Notice how the object moves out of view when one eye is closed? When the object remains in view, the open eye is your dominant eye.

ASSEMBLING YOUR SMART SWIM™ SYSTEM – PART 2

Assembled



SMART CAROUSEL

#4



Lap Trainer

#5



Open Water

#6



Media Player



#3



Apps+And Updates

#7



Apps+And Updates



System Configure



Lap Trainer



Media Player



Open Water

100%



YouTube Streamer

#2



System Settings

#1



System Configure

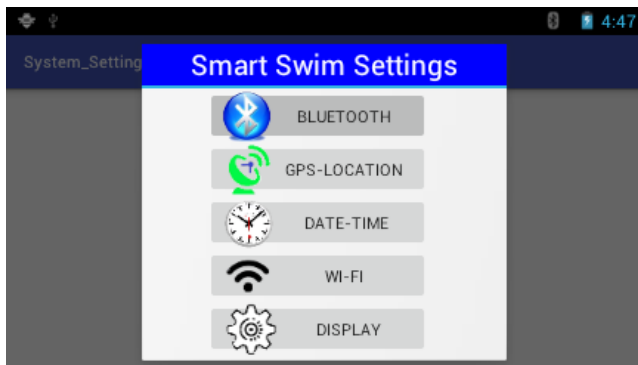
CONNECT TO WIFI

Scroll to and Open Settings:

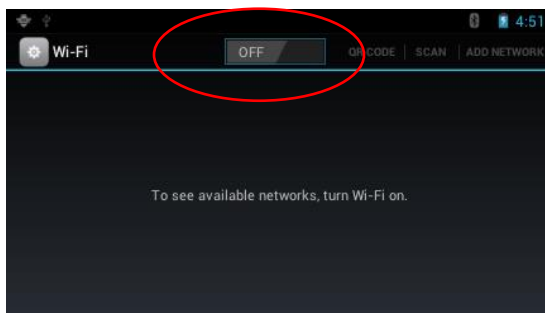


System
Settings

Select Wi-Fi option



Turn on Wi-Fi

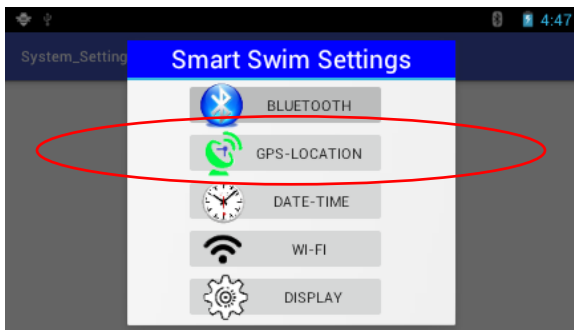


Verify Wi-Fi is detected

PAIR WITH BLUETOOTH DEVICE

Scroll to and Open Settings:

Select Blue Tooth



System
Settings

Turn on Bluetooth Device

Select Scan

Verify Device Found

Your blue tooth device is now ready and paired. The system will auto pair with the same device each time you reboot the system.

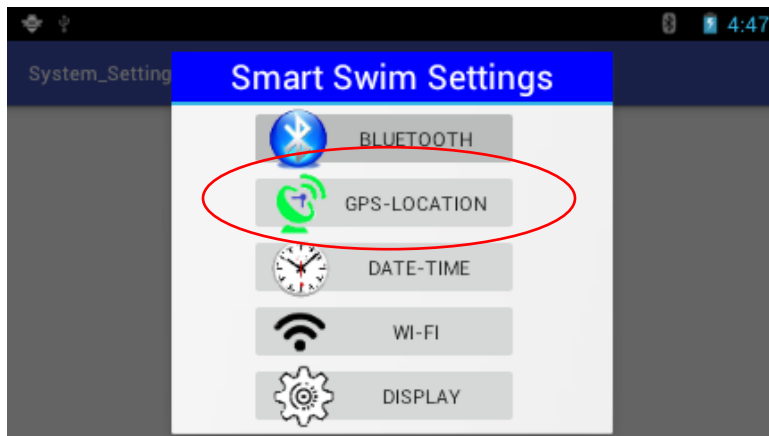
ENABLE GPS LOCATION

Scroll to and Open Settings:



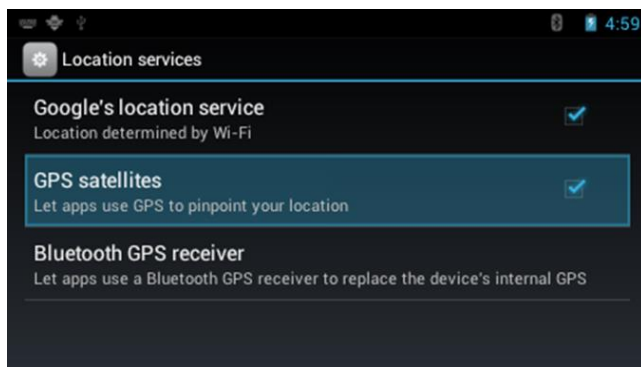
System Settings

Select GPS-Location



Check both GPS settings

REGULATORY



Note: Satellite connections will take as much as 7 to 10 minutes the first time you turn on your GPS connection. Connection time will be much shorter with successive connections in the future.

See the Open Water App for details on GPS connections.

- 1- Open Settings app.
- 2- Press Left Button
- 3- Press Select button
 - a. You will see regulatory info.
- 4- To close, press “OK” button

FCC and ISED Compliance

This device complies with part 15 of the FCC Rules and with the Radio Standards Specifications (RSS) for licence-exempt transmitters/receivers of Innovation, Science and Economic Development Canada (ISED). Operation is subject to the following two conditions: (1) This device may not cause harmful interference, and (2) this device must accept any interference received, including interference that may cause undesired operation.

Changes or modifications not expressly approved by the manufacturer could void the user’s authority to operate the equipment.

This equipment has been tested and found to comply with the limits for a Class B digital device, pursuant to part 15 of the FCC Rules. These limits are designed to provide reasonable protection against harmful interference in a residential installation. This equipment generates, uses and can radiate radio frequency energy and, if not installed and used in accordance with the instructions, may cause harmful interference to radio communications. However, there is no guarantee that interference will not occur in a particular installation. If this equipment does cause harmful interference to radio or television reception, which can be determined by turning the equipment off and on, the user is encouraged to try to correct the interference by one or more of the following measures:

- Reorient or relocate the receiving antenna.
- Increase the separation between the equipment and receiver.
- Connect the equipment into an outlet on a circuit different from that to which the receiver is connected.
- Consult the dealer or an experienced radio/TV technician for help.

This equipment complies with the FCC(US) and ISED(CAN) radio frequency (RF) exposure limits set forth for an uncontrolled environment, when used as intended, described and instructed in the user guidance. User guidance is part of the delivered package and provided through our home page.

Canada

The installer of this radio equipment must ensure that the antenna is located or pointed such that it does not emit RF field in excess of Health Canada limits for the general population; consult Safety Code 6, obtainable from Health Canada's website:

<https://www.canada.ca/en/health-canada/services/environmental-workplace-health/reports-publications/radiation/understanding-safety-code-6.html>

LEARNING MORE

Visit vuzix.com to reference a comprehensive online user's manual or contact technical_support@vuzix.com for additional information and assistance.

FOR MORE INFORMATION ON THE Smart Swim[®], VISIT:
vuzix.com

© Vuzix 2020. This quick start guide is subject to change.

Please read the safety and warranty section of the Safety and Warranty Guide before using the product.

All trademarks belong to respective owners.

467PB0001 (0001) – SMART SWIM QUICK START GUIDE