

System Check_Body_2450MHz_160204

DUT: D2450V2-736

Communication System: CW; Frequency: 2450 MHz; Duty Cycle: 1:1
Medium: MSL_2450_160204 Medium parameters used: $f = 2450$ MHz; $\sigma = 1.877$ mho/m; $\epsilon_r = 51.792$; $\rho = 1000$ kg/m³
Ambient Temperature : 23.5 °C; Liquid Temperature : 22.5 °C

DASY5 Configuration:

- Probe: ES3DV3 - SN3270; ConvF(4.37, 4.37, 4.37); Calibrated: 2015/9/28;
- Sensor-Surface: 2mm (Mechanical Surface Detection)
- Electronics: DAE4 Sn1490; Calibrated: 2015/9/14
- Phantom: ELI 4.0_Right; Type: QDOVA001BB; Serial: 1026
- Measurement SW: DASY52, Version 52.8 (1); SEMCAD X Version 14.6.5 (6469)

Configuration/Pin=250mW/Area Scan (71x71x1): Measurement grid: dx=12mm, dy=12mm

Maximum value of SAR (interpolated) = 18.3 mW/g

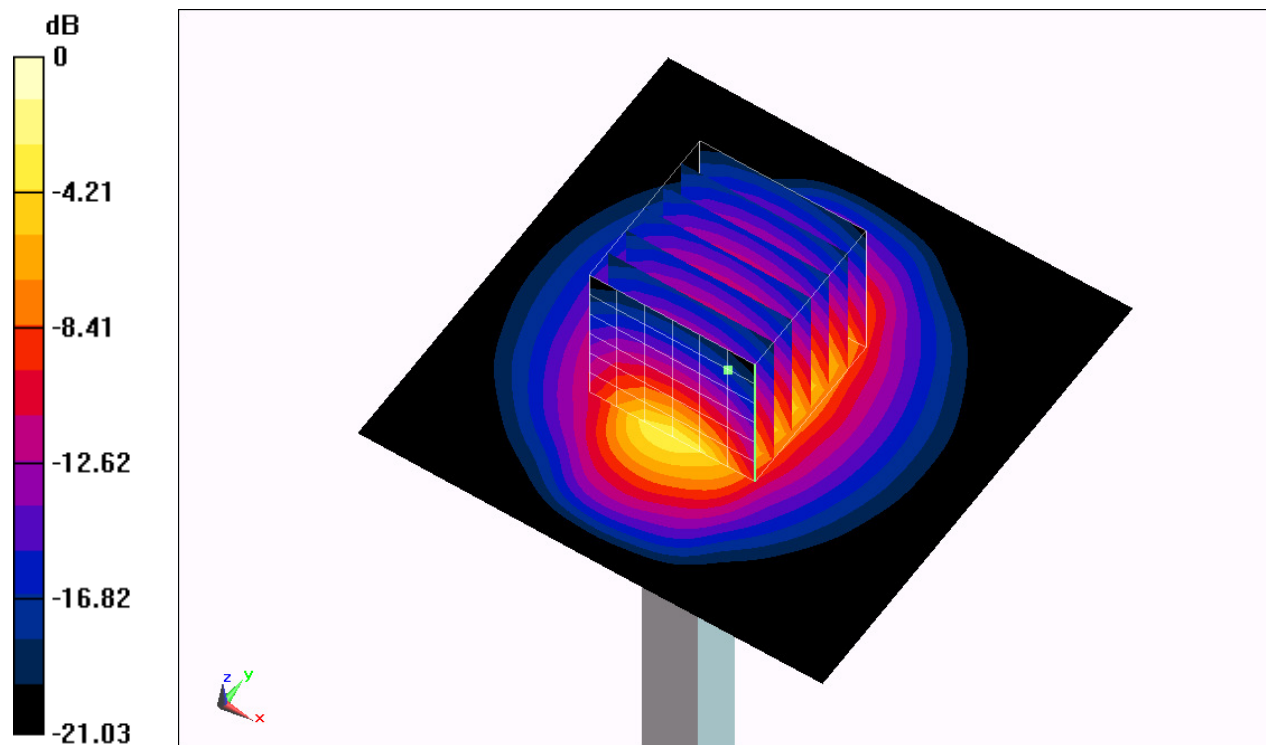
Configuration/Pin=250mW/Zoom Scan (7x7x7)/Cube 0: Measurement grid: dx=5mm, dy=5mm, dz=5mm

Reference Value = 105.6 V/m; Power Drift = 0.13 dB

Peak SAR (extrapolated) = 24.758 mW/g

SAR(1 g) = 12.2 mW/g; SAR(10 g) = 5.71 mW/g

Maximum value of SAR (measured) = 18.5 mW/g



0 dB = 18.5 mW/g = 25.34 dB mW/g

System Check_Body_5250MHz_160205

DUT: D5GHzV2-1128

Communication System: CW; Frequency: 5250 MHz; Duty Cycle: 1:1
Medium: MSL_5G_160205 Medium parameters used: $f = 5250$ MHz; $\sigma = 5.493$ mho/m; $\epsilon_r = 46.81$;
 $\rho = 1000$ kg/m³
Ambient Temperature : 23.5 °C; Liquid Temperature : 22.5 °C

DASY5 Configuration:

- Probe: EX3DV4 - SN3931; ConvF(4.48, 4.48, 4.48); Calibrated: 2015/10/1;
- Sensor-Surface: 1.4mm (Mechanical Surface Detection)
- Electronics: DAE3 Sn577; Calibrated: 2015/9/24
- Phantom: ELI 4.0_Right; Type: QDOVA001BB; Serial: 1026
- Measurement SW: DASY52, Version 52.8 (1); SEMCAD X Version 14.6.5 (6469)

Configuration/Pin=100mW/Area Scan (71x71x1): Measurement grid: dx=10mm, dy=10mm

Maximum value of SAR (interpolated) = 18.9 mW/g

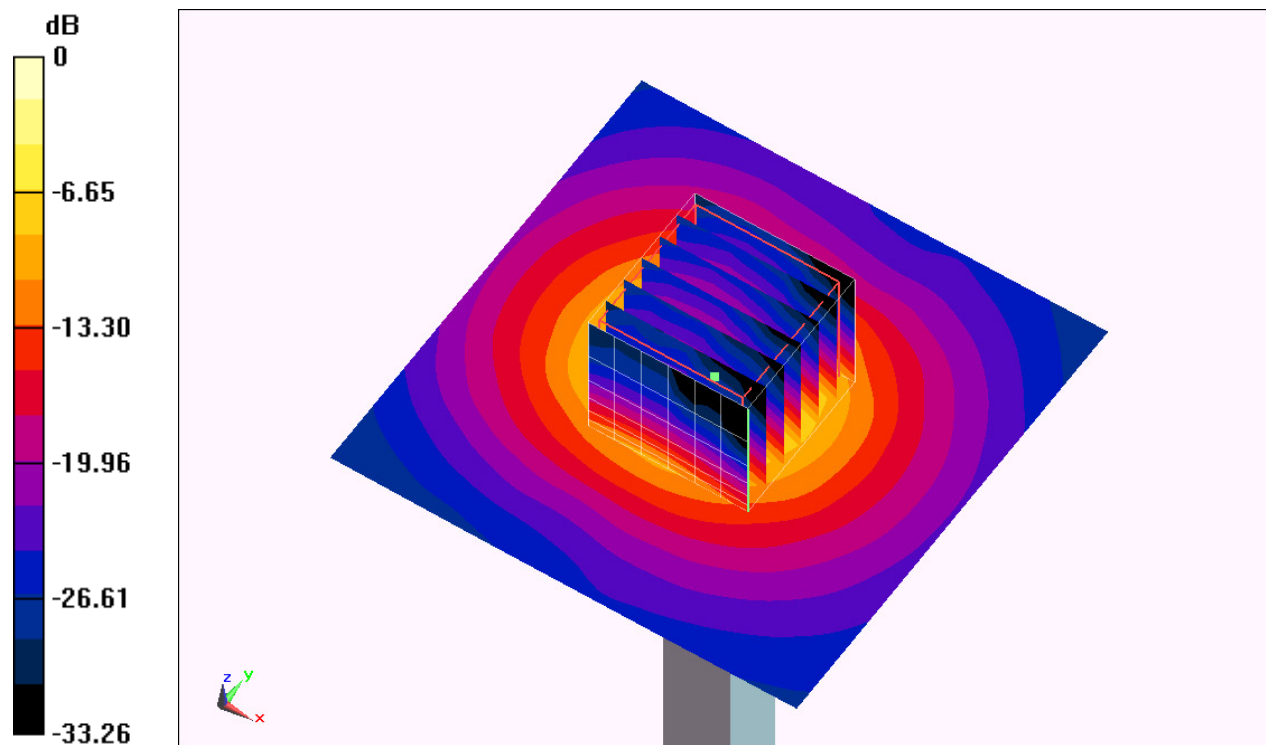
Configuration/Pin=100mW/Zoom Scan (7x7x7)/Cube 0: Measurement grid: dx=4mm, dy=4mm, dz=1.4mm

Reference Value = 65.412 V/m; Power Drift = 0.18 dB

Peak SAR (extrapolated) = 32.163 mW/g

SAR(1 g) = 7.93 mW/g; SAR(10 g) = 2.19 mW/g

Maximum value of SAR (measured) = 19.6 mW/g



0 dB = 19.6 mW/g = 25.85 dB mW/g

System Check_Body_5750MHz_160205

DUT: D5GHzV2-1128

Communication System: CW; Frequency: 5750 MHz; Duty Cycle: 1:1
Medium: MSL_5G_160205 Medium parameters used: $f = 5750$ MHz; $\sigma = 6.15$ mho/m; $\epsilon_r = 45.941$;
 $\rho = 1000$ kg/m³
Ambient Temperature : 23.5 °C; Liquid Temperature : 22.5 °C

DASY5 Configuration:

- Probe: EX3DV4 - SN3931; ConvF(3.98, 3.98, 3.98); Calibrated: 2015/10/1;
- Sensor-Surface: 1.4mm (Mechanical Surface Detection)
- Electronics: DAE3 Sn577; Calibrated: 2015/9/24
- Phantom: ELI 4.0_Right; Type: QDOVA001BB; Serial: 1026
- Measurement SW: DASY52, Version 52.8 (1); SEMCAD X Version 14.6.5 (6469)

Configuration/Pin=100mW/Area Scan (71x71x1): Measurement grid: dx=10mm, dy=10mm

Maximum value of SAR (interpolated) = 18.5 mW/g

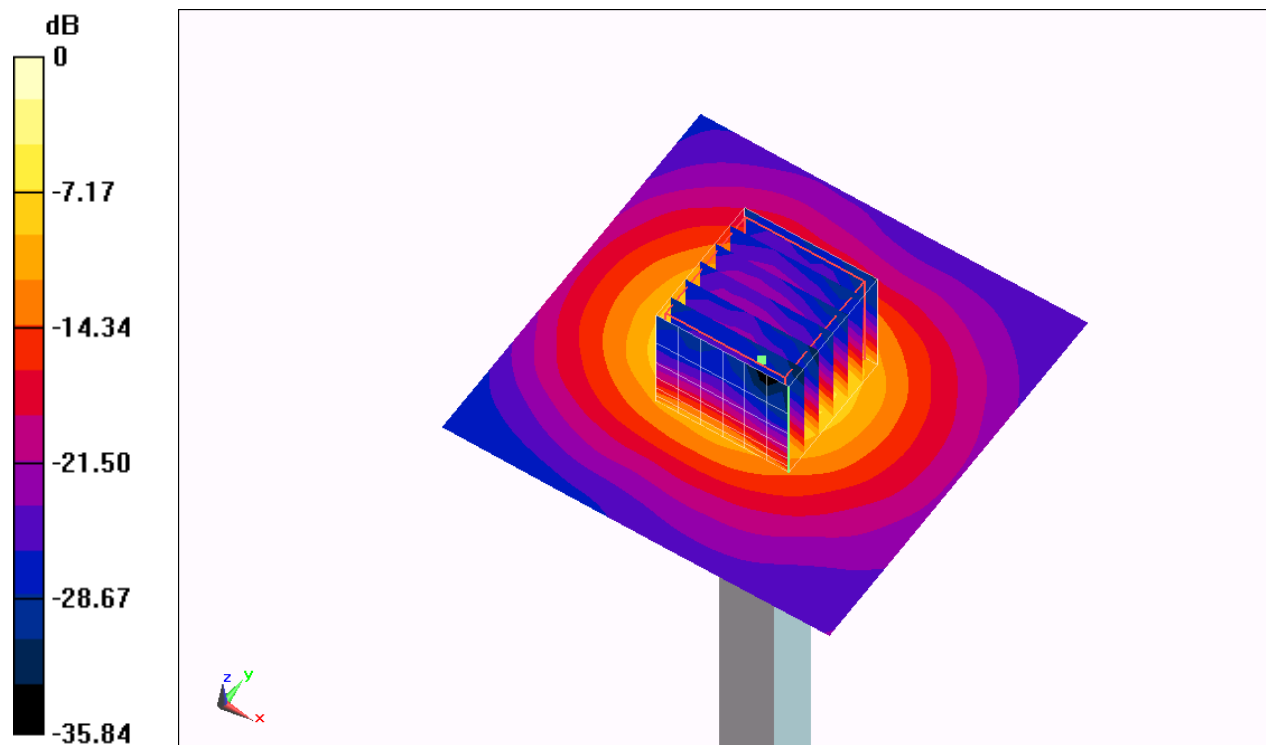
Configuration/Pin=100mW/Zoom Scan (7x7x7)/Cube 0: Measurement grid: dx=4mm, dy=4mm, dz=1.4mm

Reference Value = 63.147 V/m; Power Drift = 0.06 dB

Peak SAR (extrapolated) = 34.262 mW/g

SAR(1 g) = 7.54 mW/g; SAR(10 g) = 2.07 mW/g

Maximum value of SAR (measured) = 19.3 mW/g



0 dB = 19.3 mW/g = 25.71 dB mW/g