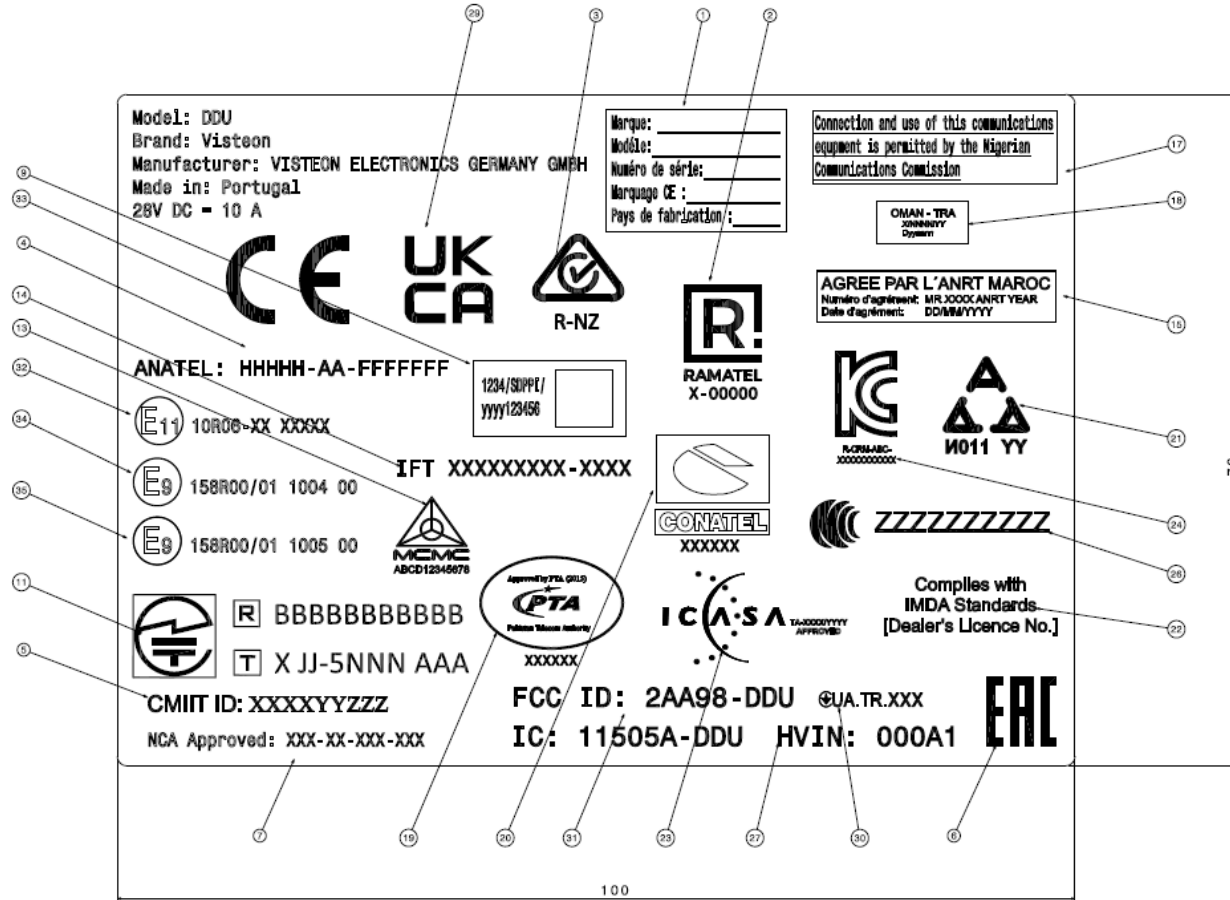
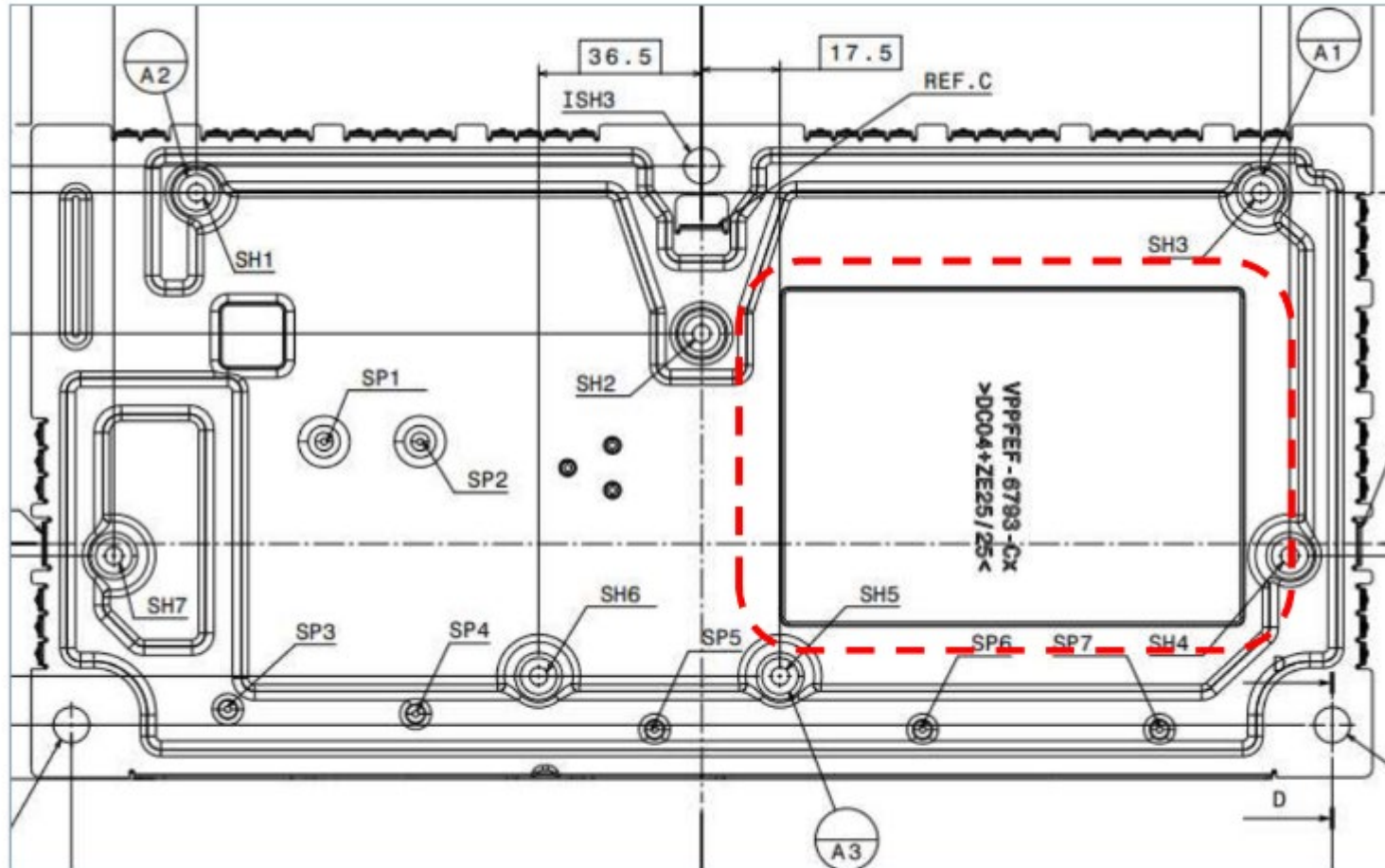


Label



| No | Country | Regulatory Authority |
|----|--------------------------|----------------------|
| 1 | Algeria | ANRC |
| 2 | Argentina | ENACOM |
| 3 | Australia New Zealand | ACMA RCM |
| 4 | Brazil | ANATEL |
| 27 | Canada | |
| 5 | China | MIIT |
| 6 | Custom Union | EAC |
| 7 | Ghana | NCA |
| 9 | Indonesia | SDPP1 |
| 11 | Japan | MIC |
| 13 | Malaysia | MCMC |
| 14 | Mexico | IFT |
| 15 | Morocco | ANRT |
| 17 | Nigeria | NCC |
| 18 | Oman | TRA |
| 19 | Pakistan | PTA |
| 20 | Paraguay | CONATEL |
| 21 | Serbia | RTT |
| 22 | Singapore | IMDA |
| 23 | South Africa | ICASA |
| 24 | South Korea | KC |
| 26 | Taiwan (BSMI) | BSMI |
| | Taiwan (NCC) | NCC |
| 29 | UK | UKCA |
| 30 | Ukraine | NKRZ1 |
| 31 | USA | |
| 32 | Venezuela | CONATEL |
| 33 | EU | |
| 34 | EU | |
| 35 | EU | |

Mechanical drawing_label position



Bottom of Equipment