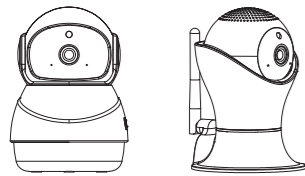


Instruction Book of PTZ Camera

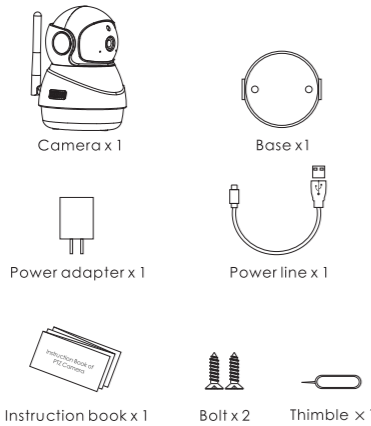


(Take this model for example)



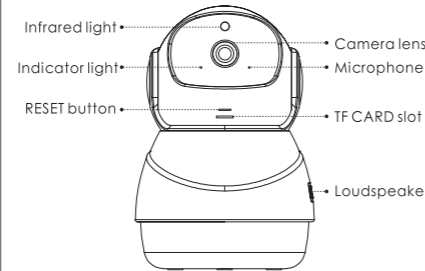
Packing list

After opening the package, please make sure whether PTZ camera (hereinafter referred to as "the Device") be intact. Check whether the accessories are intact according to the following figures.



1

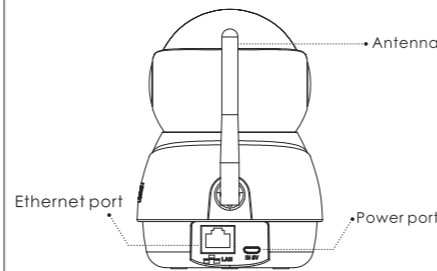
Appearance description-front



Content	Description
Indicator lamp	<ul style="list-style-type: none"> The red light is normally on: the camera is energized The red light flickers: wait for users to add the device The green light is normally on: no internet accessed The green light flickers: the camera is on line and the user can view the video
RESET button	<ul style="list-style-type: none"> Press RESET key for 1~2s, the device restores the factory setting and restart
TF CARD slot	<ul style="list-style-type: none"> Support local storage of TF CARD (Max. 128G). If you insert TF CARD, please initialize it firstly.

2

Appearance description- back side



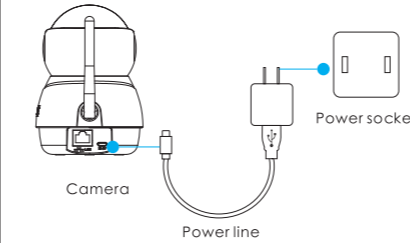
Content	Description
Power port	• DC 5V
Ethernet port	• 10M/100M self-adaptive Ethernet port

3

Operation guide

Turn on the device

Connect the device and power adapter through power line, then put through the power. When the indicator light is red, it means the device is started.



User registration

Please connect Wi-Fi (5G Wi-Fi is not supported) with your phone, scan the following QR code of APP, download and install the APP and then complete user registration according to the hint.

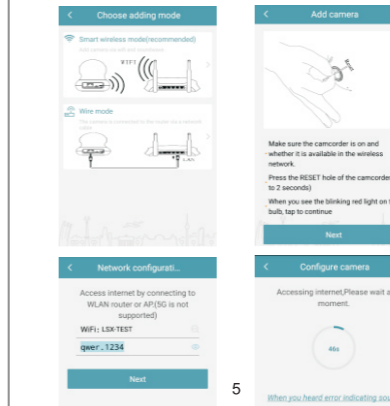


4

Quick configuration

Add device

Log in APP, complete WiFi connection and device addition according to the hint. If the user needs to select Wi-Fi network again, please press RESET button for 1~2s, the equipment will be restarted. When the indicator light is red, reconnect Wi-Fi. The user can also access cable network, connect the router and device with a reticle, search MAC address of the device and then add it.

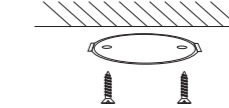


5

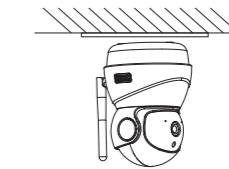
Device installation(optional)

The installation wall should be a certain thickness and bear at least three times of the weight of the device.

1 Install the base
Select clean and flat wall. Make the mark of base toward the user and then use the screw to fix the base on the selected position.



2 Install the main body
Install the main body of the device on the base and rotate it clockwise for about 90°



3 Connect wires
Connect the power line of the device. After completing the equipment startup, wifi accessed previously will be accessed automatically without being added gain.

6



FCC Caution.
This device complies with part 15 of the FCC Rules. Operation is subject to the following two conditions: (1) This device may not cause harmful interference, and (2) this device must accept any interference received, including interference that may cause undesired operation.

Any Changes or modifications not expressly approved by the party responsible for compliance could void the user's authority to operate the equipment.

Note: This equipment has been tested and found to comply with the limits for a Class B digital device, pursuant to part 15 of the FCC Rules. These limits are designed to provide reasonable protection against harmful interference in a residential installation. This equipment generates uses and can radiate radio frequency energy and, if not installed and used in accordance with the instructions, may cause harmful interference to radio communications. However, there is no guarantee that interference will not occur in a particular installation. If this equipment does cause harmful interference to radio or television reception, which can be determined by turning the equipment off and on, the user is encouraged to try to correct the interference by one or more of the following measures:

- Reorient or relocate the receiving antenna.
- Increase the separation between the equipment and receiver.
- Connect the equipment into an outlet on a circuit different from that to which the receiver is connected.
- Consult the dealer or an experienced radio/TV technician for help.

*RF warning for Mobile device:
This equipment complies with FCC radiation exposure limits set forth for an uncontrolled environment. This equipment should be installed and operated with minimum distance 20cm between the radiator & your body.

Product warranty card

Dear users,

Thank you for using our products. please read the following terms carefully before installing the product.

- The warranty period is one year since the date of purchasing. Within the warranty period, the trouble caused by the quality problem of the product in the case of normal use will be maintained by our company free of cost.
- The following cases are beyond the warranty range:
 - Any faults or defects caused by improper operating environment or operation.
 - Any faults or defects caused by improper installation, misuse, unauthorized maintenance, revision, accident, force majeure event or other external factors.
 - Any faults or defects caused by using the product, software or component of the third party.
 - The product has been beyond the warranty period.
 - The product barcode cannot be identified or is mismatched.
 - The faults or damage not arising from the design, technology, manufacturing and quality problems of the product.

Function introduction

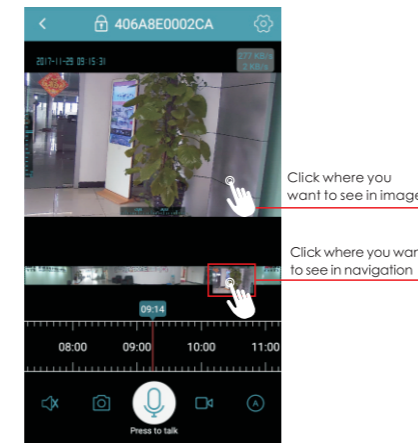
- Panorama picture and 3D navigation**
- Multiple video encryption**
- Warning and warning playback**
- 1080P HD image resolution**
- Support PTZ control, horizontal rotation for 340° and vertical rotation for 140°**

The realization of some functions of the product (including but not limited to the browsing of real-time video, remote playback of video, push of warning information, voice talkback, PTZ control and sharing, etc.) depends on the internet.

7

Panorama photograph and 3D navigation

3D navigation function breaks through the constraint of the previously rotating the device through sliding the image with finger. It makes the user find out the needed position fast and accurately, realize low operation-workload, high-accuracy, fast, convenient and perfect experience and really implements what you click on is what you want to get.

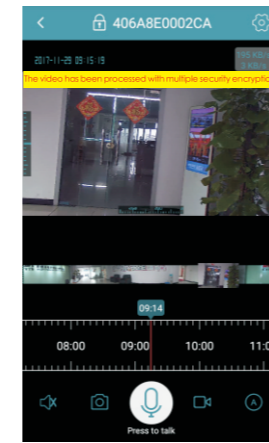


8

Multiple video encryption

The video has been processed with multiple security encryption methods to protect your privacy safety.

- Default encryption.
- Camera setting-Encryption setting-Custom encryption and password setting.



9

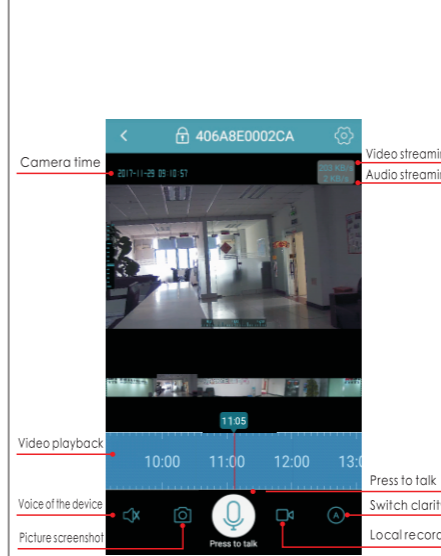
Warning playback

Click on to enter warning interface. When the camera is inserted with TF card, the user can download and view the warning pictures, or else the device only pushes the warning messages, but the user cannot download the picture. After the warning picture is downloaded successfully, click on the play icon on the picture, search the corresponding video file and then the device will skip to the position 10s before the warning to play back the video.



10

APP setting interface



11

FAQ

- Question: Why does the time of camera show 2000-01-01?**
Answer: It is the factory default time. After you accessing internet, the camera will synchronize the network time automatically. Please wait for it patiently.
- Question: Why can't the warning pictures be downloaded ?**
Answer: The warning pictures can be downloaded after TF card is inserted. In the case when the camera is outage, insert the TF card to the slot, energize it again. Prior to inserting the TF card, the warning pictures cannot be downloaded.
- Question: I want to enquire the previous video, what should I operate ?**
Answer: Camera can save and play back the video only if it is equipped with TF card. When the camera is outage, insert TF card to the slot, energize it again, drag the timer shaft, and select the time point to be played back in the blue video file bar. If the playback is interrupted or there is no playback file at the current position, the next video file will be played automatically. (Please confirm the time on the top of left corner of the camera has been synchronized to the current time, if the time is not synchronized, the user cannot enquire the video until the time is synchronized).
- Question: Provided turning off the video or exiting APP, will the camera continue recording ?**
Answer: The camera has two recording modes: one is press "recording" icon on the APP to record manually; the other is inserting SD card, the camera will record automatically in the case of internet access.

12

Notes:

- Please try to put the device in an open space far away from the metal.
- Avoid putting the device at the back of the furniture or nearby the microwave oven.
- Avoid the intertwining of audio line, video line and USB line.
- Ensure the device is within the coverage of Wifi signal and try to be near the Wifi signal.

Important declaration
• For your safety and your families' safety, please keep the registration password properly to prevent the leakage of personal information.
• Prior to inserting or pulling out the SD card, please cut off the power, or else the SD card or device may be damaged.