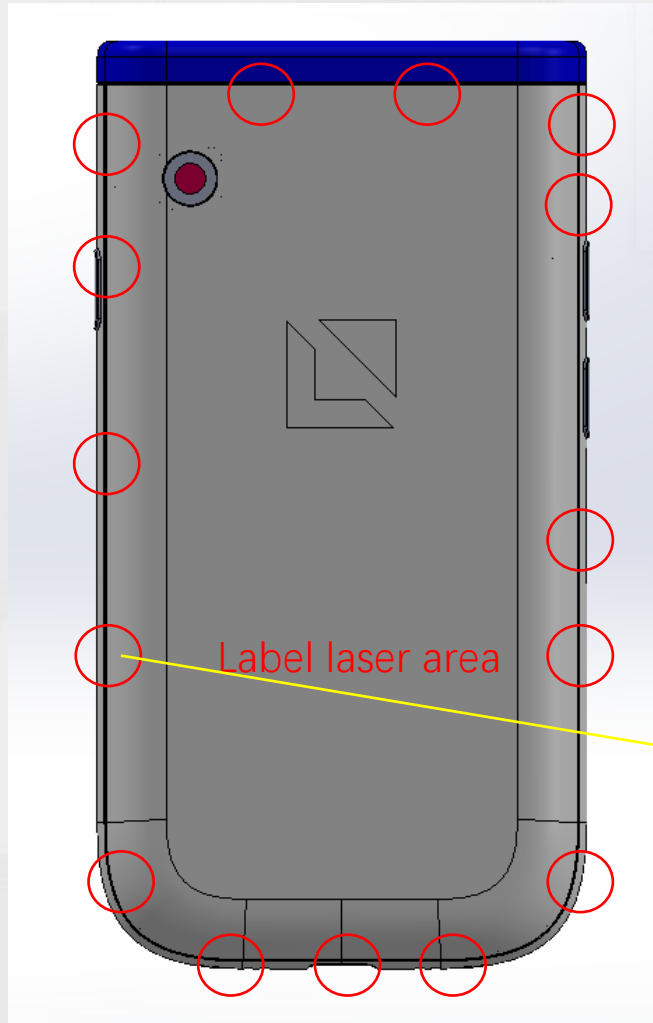


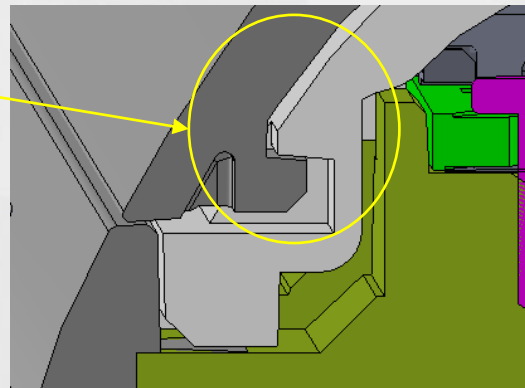
BG1000 Cover design explanation

BG1000 Design



- BG1000 back cover which the label laser area is design cannot be opened
- A. The design has 15 location having snaps design as below. If it opened, it will need to pry it open by using a tools. It will also damage the cover and the housing.
 - B. The battery is installed in production, it is not able to be replacement.
 - C. The SIM card is installed and activated in production line, too.
 - D. The cover will be sealed and glued

End user will not be able or need to open the cover.
If it open even in our production line, the whole housing will be damaged



Snap design is not intend to be opened

Cover Gluing

silicon glue		surface curing time:5-10min complete curing time:1day (23°C × 51%RH)
--------------	--	--

+



Glue : KINGBOXER DX-458-T

4 axis gluing machine

Model: DS-DP50 Serial Number:
C10010100050

The cover will also be glued when production closed the cover for secondary protection

