

ORBITSOUND



M10_{LX}

High Performance Spatial Soundbar
with Subwoofer and Bluetooth®

Handbook v2

Contents

Welcome	3
Orbitsound contact information	3
Package contents	3
The soundbar	4
Remote control	4
Subwoofer	4
Control panel overview	5
Getting Started	6
Connect, power on	6
Connect the Soundbar to your TV	7
Bluetooth	9
AUX input	9
Remote control	10
Advanced Setup & Use	11
Positioning - getting the most from spatial sound	11
Subwoofer placement	11
Other features	12
Power saving	12
Setting memory	12
Reset soundbar levels	12
Auto-mute	13
Bluetooth resume / grab	13
Important safety information	13
Maintenance	14
Cleaning and care	14
Troubleshooting	15
No sound is heard	15
The sound is out of sync with the TV	15
Remote does not work	15
Sound is distorted	15
Sound is noisy / 'hissy'	16
Digital optical issues: 'Clicking' or no sound	16
No sound from subwoofer (soundbar working)	16
Battery replacement (remote)	16
Warranty Terms	17
Making a Warranty Claim	17
FCC Statement:	18
Orbitsound Ltd Warranty Terms and Conditions	18
WARNINGS	19
Specifications	20

Welcome

Thank you for purchasing the orbitsound M10LX spatial soundbar with compact subwoofer and Bluetooth. With proper use the orbitsound M10LX delivers superb sound fidelity, engaging spatial sound, and will provide you with a fantastic listening experience.

This instruction booklet covers important safety and setup information as well as advice on how to get the most out of your orbitsound M10LX.

Orbitsound contact information

ORBITSOUND LTD.

UK Support Tel: +44 (0)8456 521 219

International Support: www.orbitsound.com

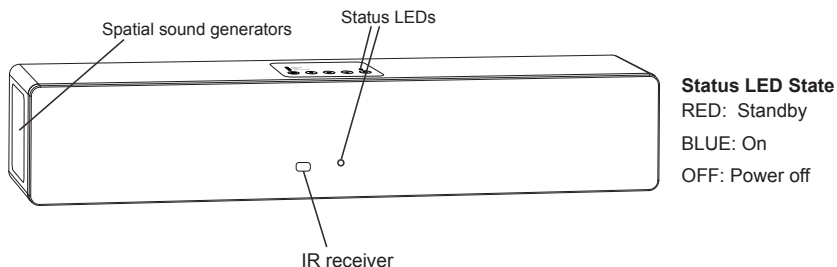
Email: support@orbitsound.com

Package contents

Inside the packaging you will find:

- Soundbar
- Subwoofer
- Remote control
- Inline power supply + power cord
- Subwoofer cable
- This handbook
- Quick start guide
- Audio connection cable
- Digital optical (TOSLINK) connection cable

The soundbar

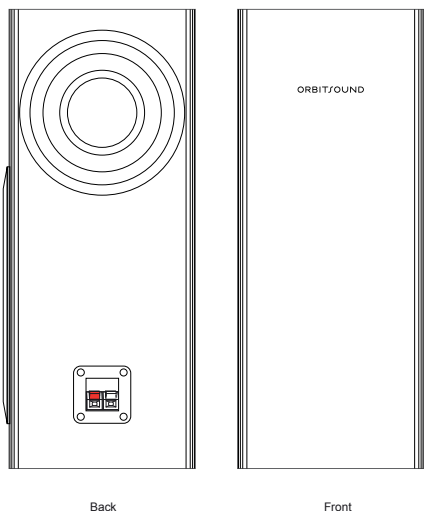


The orbitsound M10LX soundbar produces most of the sound that you hear. It produces the main signal and spatial information.

Remote control

The remote control provides volume control, tone control and sound source selection, and additionally playback controls when using a connected Bluetooth device.

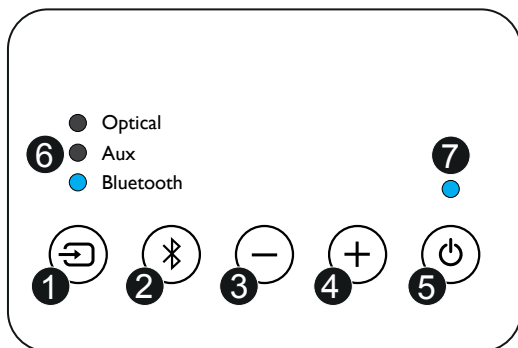
Subwoofer



The subwoofer is a wired passive loudspeaker that produces powerful Hi-Fi bass. It has been designed specially to complement the soundbar.

Control panel overview

The soundbar can be controlled from the control panel:

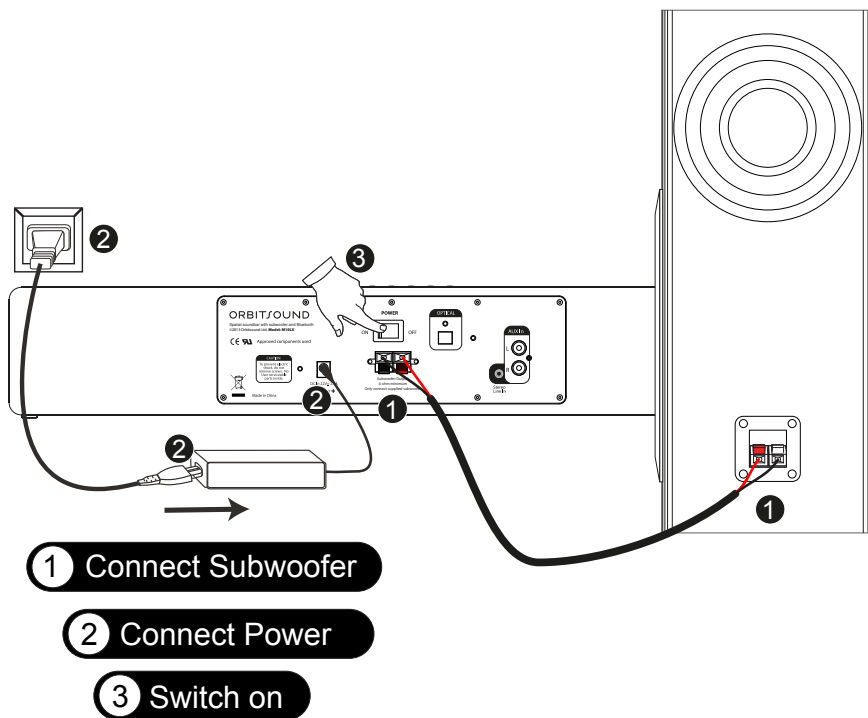


1. Source: Press to cycle through the inputs. This controls what device is playing through the soundbar.
2. Bluetooth: Short press to renew a Bluetooth connection / start playback. Long press (Press and hold) to enter pairing mode.
3. Vol - : Reduce volume.
4. Volume +: Increase volume.
5. Standby: Enter standby mode or power on.
6. Source LED: Shows which source is currently playing
7. Status: Blue shows the soundbar is on. Red shows standby. The light will flash when a button is pressed on the remote or on the control panel.

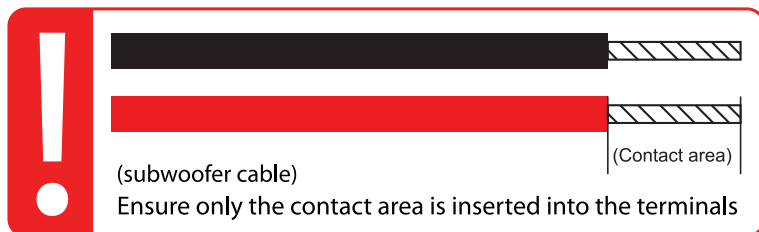
Hint: Long press the power button to reset the soundbar. This will reset the source, volume, treble and bass memory to factory default settings. Press and hold for 3 seconds. The soundbar will confirm by flashing the power/status light 3 times. The unit will reset and optical source will be selected.

Getting Started

Connect, power on

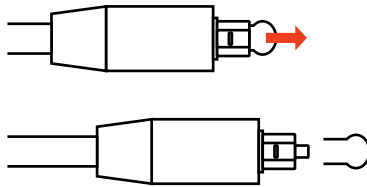


1. Connect the subwoofer as shown (see below picture)
2. Connect power to the soundbar.
3. Switch on the power switch.



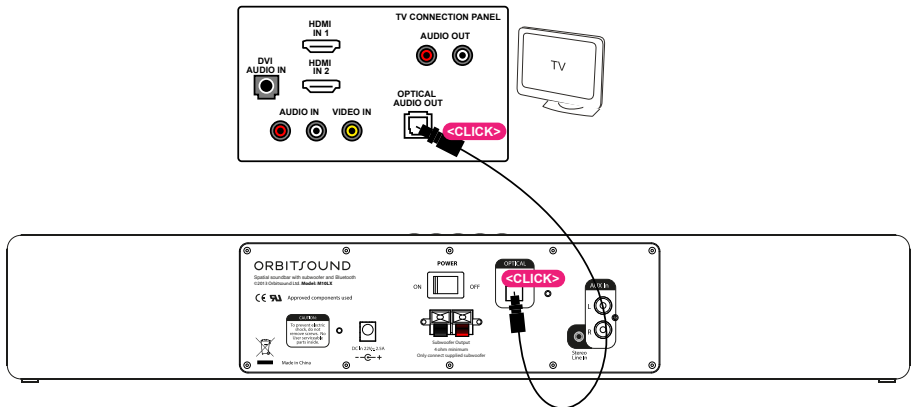
Connect the Soundbar to your TV

1) Remove plastic covers from optical cable:



IMPORTANT: Remove the protective plastic covers from a new TOSLINK (optical) cable before connecting to the optical sockets. Failure to remove these covers may result in damage and will interrupt the sound output.

2) Connect to your TV with the optical cable:

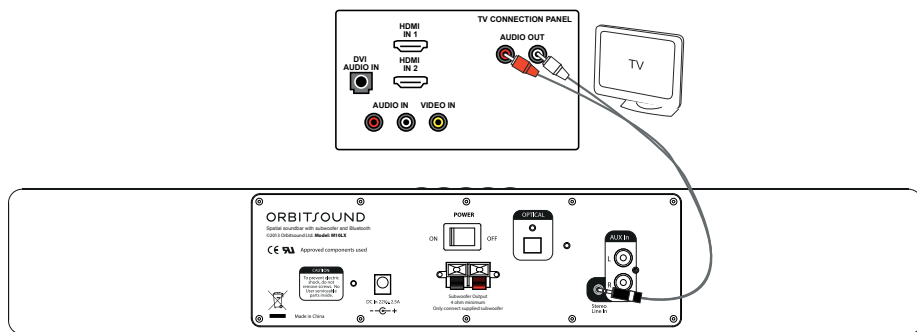


HINT: When using the soundbar in this way, it is normal that the speakers on the TV will need to be turned down or muted to stop sound coming from the TV's own speakers.

HINT: Make sure that the sound output mode for the optical output on the TV is set to 'PCM', or 'Normal'. This provides the best overall listening experience.

IMPORTANT: FIRMLY CONNECT THE OPTICAL CABLE UNTIL IT 'CLICKS'

2) (OPTION) If your TV does not have an optical output:

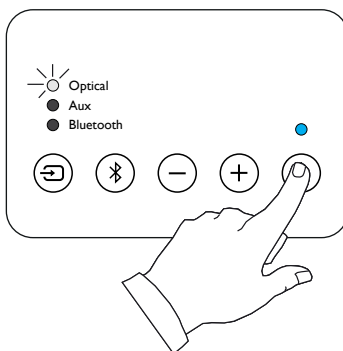


Use the included analogue RCA/Jack cable to connect the audio output from your TV to the soundbar.

Note: Some TVs may only have a 3.5mm jack output, you can also use this same cable. Simply use the 3.5mm jack end for the TV, and connect to the RCA inputs on your soundbar.

Note: If your TV has no audio output, you can connect the optical or analogue cable to your set top box or DVD player.

3) Turn the soundbar ON:

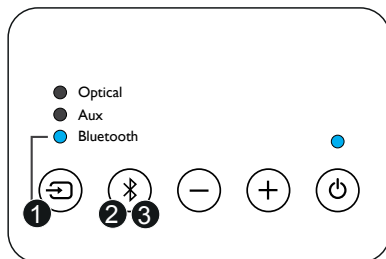


Press the power button. The indicator light will turn blue, and the optical indicator will light, showing the unit is playing the optical source.

You can now hear the sound from your TV via the digital optical cable.

Bluetooth

You can connect your phone or tablet for Bluetooth playback.



- Solid blue light: You're paired!
- Slow flash blue light: Looking for previously paired device
- Fast flash blue light: In pairing mode

1. Press to select Bluetooth sound source. The Bluetooth source light will show the status of the Bluetooth connection.

2. To pair a new device: Press and hold the Bluetooth pairing button for 3 seconds. The Bluetooth source light will flash quickly to show that pairing mode has started. Look on your device for 'Orbitsound' in the Bluetooth device list, and pair with it. When a device is paired, the soundbar Bluetooth source light will change to solid blue.

3. If your device was previously paired, then you can short press the Bluetooth button to 'grab' the device and resume playback.

Note: If you are asked for a PIN number, enter '0000'.

AUX input

The Jack and RCA inputs (AUX) input can be heard by choosing 'AUX' on the control panel.

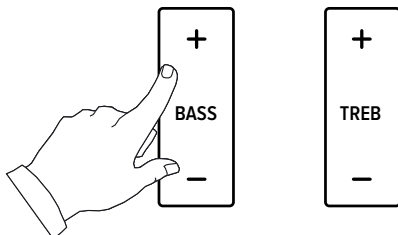
Hint: The RCA inputs and jack (3.5mm) inputs mix, so more than once external device can be connected. The soundbar will mix the 2 sources together.

Remote control

The control panel functions can also be done from the remote control:

Source	Changes the input source
Volume + / -	Controls volume
Power	Enter standby / resume

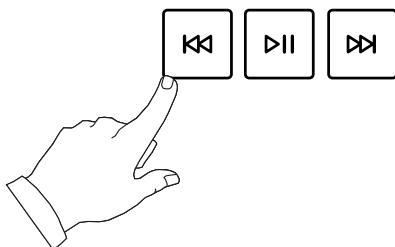
Change tone: Bass and treble controls the sound:



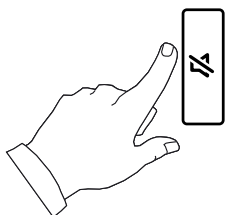
Note: Treble changes the sound of the soundbar + / - 5 steps.

Note: Bass changes the volume of the subwoofer remotely + / - 5 steps.

Remote playback: You can control the track and playback of a connected Bluetooth device:



Mute: Press the mute button to engage mute. This will stop all sound. The Soundbar status light will flash blue when mute is enabled. To resume play, press mute again:

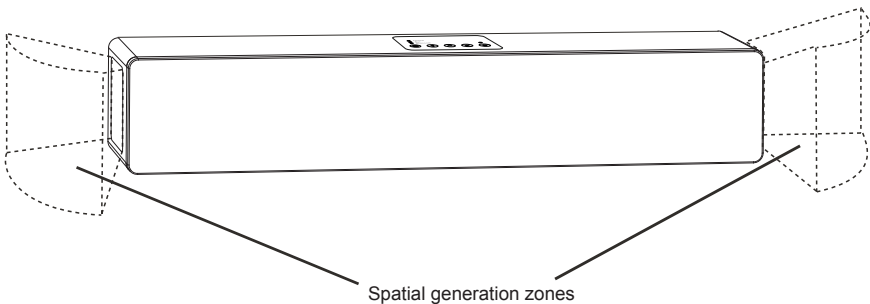


Advanced Setup & Use

The orbitsound M10LX is easy to set up and enjoy, but even better sound may be achieved by following these guidelines.

Positioning - getting the most from spatial sound

The spatial sound field is produced by the speakers in the sides of the soundbar. These special signals interact with the main signal (front) to produce true imaging in your listening environment:



IMPORTANT: The areas marked need to be clear of obstacles in order for the spatial stereo sound field to work properly.

HINT: Because Orbitsound produces a uniform spatial sound field, the soundbar does not need to be placed directly in front of the listener. Therefore, placing the soundbar conveniently so that the sides are not obstructed is more important than central placement, i.e. on low or high shelf, counter top, below/above TV

Subwoofer placement

Subwoofer placement does not affect the overall sound much. Position the subwoofer after optimising placement of the soundbar.

HINT: The sound output from the subwoofer is omni directional, so this can be placed anywhere.

IMPORTANT: Always make sure that the subwoofer's side with a port (rear) is clear from obstruction. Covering this port will adversely affect the sound.

Other features

Power saving

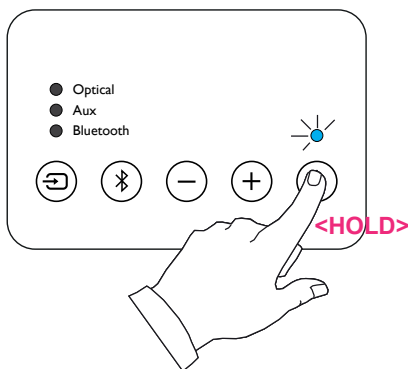
The M10LX features a low power state. When the soundbar enters standby mode, the power consumption is reduced. It is recommended that Users routinely use standby mode to save energy.

Setting memory

When in standby mode, or if disconnected from the mains completely, the soundbar will remember settings for pairing, bass, treble, volume and source selection.

Note that the volume will be reduced if set very high when the unit restarts to protect the listener.

Reset soundbar levels



You may wish to reset the soundbar settings. To do this, switch the unit on, then press and hold the power button for a few seconds on the control panel. The soundbar status light will flash, and then the soundbar will reset. Optical source will be selected with default settings.

Auto-mute

If there is no signal, or extremely low input signal, the soundbar will enter auto-mute mode. This reduces power consumption, and also completely silences the soundbar and subwoofer.

Bluetooth resume / grab

If you have previously paired your phone/tablet, there is no need to re-pair the device. Simply choose the Bluetooth source, then short press the Bluetooth button on the control panel. The soundbar will seek a previously paired device, and resume playback.

Note: You can also press play/pause on the remote control in Bluetooth mode to 'grab' your paired device and continue playback.

Important safety information

1 - The apparatus shall not be exposed to dripping or splashing and that objects filled with liquids, such as vases, coffee mugs, glasses etc. shall not be placed on apparatus.

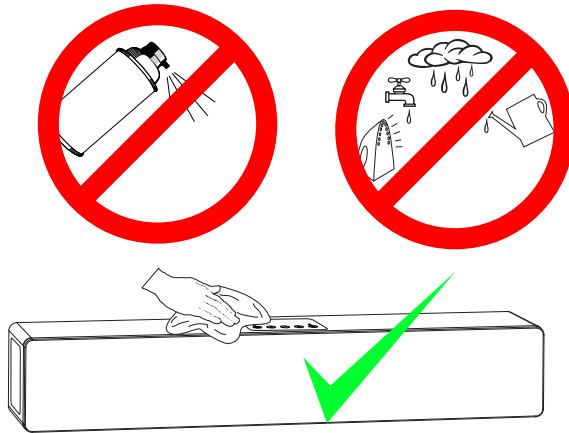
2 - The mains plug/appliance coupler/direct plug-in adapter is used as disconnect device for the soundbar and the subwoofer, the disconnect device shall remain readily operable.

CAUTION: Danger of remote control failure if battery is incorrectly replaced. Replace only with CR2025 or CR2032 (preferred).

WARNING: The remote control battery shall not be exposed to excessive heat such as sunshine, fire or the like.

Maintenance

Cleaning and care



Use a soft, clean cloth moistened with plain, luke-warm water to clean the exterior of the unit. Glass cleaner is a good way to remove finger marks, but please use it sparingly, and avoid contact with the actual loudspeaker driver units.

IMPORTANT: Never use solvents such as benzene or other strong chemical cleaners since these could damage the unit's finish. It is **VERY** important that no liquid reaches the inside of the unit.

Troubleshooting

No sound is heard

- Check power connections and that there is a continuous blue light on control panel.
- Check that the TV or other sound source is playing and that it is connected properly to the soundbar. If unsure that your media device is playing, unplug, and test with headphones.
- Press the sound source button on the remote control or control panel to change the sound source. The indicators show which source is playing.
- Adjust the volume of the soundbar until sound is heard.
- Increase the volume of the playback device. The M10LX features an energy saving mode that cuts the power to the amplifiers when there is no signal for a long time.

The sound is out of sync with the TV

- Make sure all video sources are connected to the TV and that the soundbar is connected to the TV optical output or RCA output sockets. This connection method should re-align the sound. If it is still out of sync, look for a sound/time alignment menu in the TV menus.

Remote does not work

- Check that plastic strip in remote (battery compartment) has been removed.
- If the remote has had a lot of use, replace the battery.
- Check there are no obstructions between the remote and the front of the soundbar.

Sound is distorted

- Turn down the output of the device playing into the soundbar
- Turn up the master volume on the soundbar if necessary.
- Check that all audio connections are well seated / plugged in fully.

Sound is noisy / ‘hissy’

- Turn down the volume of the soundbar unit
- Turn up the output volume of music source to compensate.
- Use the digital optical (TOSLINK) inputs if possible to reduce noise.

Digital optical issues: ‘Clicking’ or no sound

- Connect the TV optical output to the soundbar optical input preferentially.
- Ensure both ends of the optical cable have had the protective plastic tip removed.
- Ensure both ends of the cable have been inserted fully; a distinct ‘click’ will be felt when the cable is properly seated.
- Check the output format of the optical signal from the playing device. Choose ‘normal’ or ‘PCM’ format. Refer to the TV manufacturer’s handbook for more information. You can also contact Orbitsound for advice, see contact help line in this handbook and on the packaging.

No sound from subwoofer (soundbar working)

- Check the subwoofer cable is connected properly, and that only the metal parts of the wire are inserted into the socket.
- Press the Bass + button on the remote control, or try a reset (press and hold the power button on the soundbar for 3 seconds until the unit resets).

Battery replacement (remote)

Replace remote battery with anode up (+) from back-side.



Use battery type CR2032

Orbitsound Warranty

This Orbitsound product is supplied with a 12 month limited manufacturer's warranty dated from new purchase date. This warranty covers repairs or replacement that may be required in the event of unit failure during normal use, subject to the terms and conditions stated below and at the Agent's discretion. This warranty is non transferable and excludes any routine maintenance, consumables or parts, or any work arising from use of the equipment outside the recommendations in the handbook, misuse or negligence. This Warranty does not affect any statutory Consumer rights in the place of purchase.

Warranty Terms

'Agent' means Orbitsound Ltd. or an Orbitsound representative appointed for the purposes of fulfilling the manufacturer's warranty.

'Purchaser' means the company, firm or person using the product for the warranty period.

'Product' means the good sold to the Purchaser under contract.

Making a Warranty Claim

In the event that the unit stops working or performing as described in the handbook, the following procedure must be followed in order to have the unit restored or replaced by this warranty:

1. Contact your Orbitsound support agent FIRST.
2. If the support agent advises to do so, return the unit in its original packaging complete with PROOF OF PURCHASE to the address advised.
3. You will be advised by the Agent on the action that will be taken and any costs payable, subject to the conditions of this warranty.

Orbitsound Ltd Warranty Terms and Conditions

1. RETURN TO BASE WARRANTY

Faulty products will be repaired or replaced (as deemed appropriate by the relevant Agent) at the Agent's premises.

2. LIMITATIONS

The warranty covers the product and any agent installed accessories provided that the equipment has been installed and used in accordance with the supplied handbook instructions. The warranty will not cover repairs or replacements arising from misuse or accidental damage. See Warranties and Liabilities.

3. CHARGES

For warranty repairs that are 100% covered by the manufacturer's warranty, there will be no charge for any repair or replacement or return freight to the purchaser. Any repairs or replacements that are found to be outside the scope of this manufacturer's warranty are chargeable, and the return freight will be charged at the Agent's discretion. Associated charges must be paid in full before the returned item(s) will be dispatched to the Purchaser.

4. WARRANTIES AND LIABILITIES

Subject to the provisions below the supplier warrants that the product will perform in a manner fit for purpose.

- a. The Agent shall be under no liability in respect of any defect in the product arising from any action whatsoever by the Purchaser except such action as is described and recommended in the handbook supplied.
- b. The Agent shall accept no liability for any defect arising from excessive wear and tear, willful or accidental damage, abuse, negligence, abnormal operating or storage conditions or failure to follow the operating
- c. Unauthorised modification or repair by unauthorised person(s) voids this warranty immediately.
- d. The Agent shall be under no liability under this warranty if the total agreed price for the product has not been paid in full.
- e. The liability of the Agent shall not exceed the price paid for the product and the Agent shall not be liable for any loss of profit or consequential damage or any other claim for compensation.
- f. This warranty does not affect any statutory consumer rights that may exist where the Product was purchased.

5. FORCE MAJEURE

The Agent shall have no liability for delay or failure to perform if such failure is due directly or indirectly to any cause beyond the Agent's reasonable control including but without limitation to acts of God, explosion, fire, terrorism, accident, war or threats of war, prohibitions of any kind, embargoes, strikes or lockouts.

GENERAL

The Agent may assign or subcontract responsibilities and rights under this warranty. In all warranty cases, please refer to the support pages of www.orbitsound.com first.

FCC Statement:

This device complies with Part 15 of the FCC Rules. Operation is subject to the following two conditions: (1) this device may not cause harmful interference, and (2) this device must accept any interference received, including interference that may cause undesired operation. Any changes or modifications not expressly approved by the party responsible for compliance could void the user's authority to operate the equipment.

THE MANUFACTURER IS NOT RESPONSIBLE FOR ANY RADIO OR TV INTERFERENCE CAUSED BY UNAUTHORIZED MODIFICATIONS OR CHANGE TO THIS EQUIPMENT. SUCH MODIFICATIONS OR CHANGE COULD VOID AND CHANGE ANTENNA WHICH THE MANUFACTURER PROVIDES. IT IS THE USER'S AUTHORITY TO OPERATE THE EQUIPMENT.

This equipment has been tested and found to comply with the limits for a Class B digital device, pursuant to part 15 of the FCC Rules. These limits are designed to provide reasonable protection against harmful interference in a residential installation. This equipment generates, uses and can radiate radio frequency energy and, if not installed and used in accordance with the instructions, may cause harmful interference to radio communications. However, there is no guarantee that interference will not occur in a particular installation. If this equipment does cause harmful interference to radio or television reception, which can be determined by turning off and on, the user is encouraged to try to correct the interference by one or more of the following measures:

- Reorient or relocate the receiving antenna.
- Increase the separation between the equipment and receiver.

- Connect the equipment into an outlet on a circuit different from that to which the receiver is connected.
- Consult the dealer or an experienced radio/TV technician for help.

This equipment complies with FCC radiation exposure limits set forth for an uncontrolled environment. To maintain compliance with FCC's RF exposure guidelines, this equipment should be installed and operated with a minimum distance of 20cm between radiator and your body. This transmitter must not be co-located or operating in conjunction with any other antenna or transmitter.

WARNINGS

- To reduce the risk of fire or electric shock, do not expose this apparatus to rain or moisture. The apparatus shall not be exposed to dripping or splashing and that objects filled with liquids, such as vases, shall not be placed on apparatus
- Where the mains plug or appliance coupler is used as the disconnect device, such disconnect device shall remain readily operable
- Only use AC/DC adaptor specified rating: Input 100-240Vac, 50-60HZ; Output 22Vdc, 2.5A. This product is intended to be used only with the power supply provided
- The direct plug-in adaptor is used as disconnect device, the disconnect device shall remain readily operable (for speaker)

Important Safety Information

1. Read these instructions.
2. Keep these instructions.
3. Heed all warnings – on the product and in the owner's guide.
4. Follow all instructions.
5. Do not use this apparatus near water.
6. Clean only with a dry cloth.
7. Do not block any ventilation openings. Install in accordance with the manufacturer's instructions.
8. Do not install near any heat sources, such as radiators, heat registers, stoves or other apparatus (including amplifiers) that produce heat.
9. No naked flame sources, such as lighted candles, should be placed on the apparatus.
10. Do not defeat the safety purpose of the polarized or grounding-type plug. A polarized plug has two blades with one wider than the other. A grounding-

type plug has two blades and a third grounding prong. The wider blade or third prong is provided for your safety. If the provided plug does not fit in your outlet, consult an electrician for replacement of the obsolete outlet.

11. Protect the power cord from being walked on or pinched, particularly at plugs, convenience receptacles, and the point where they exit from the apparatus.
12. Only use attachments/accessories specified by Orbitsound.
13. Do not let objects or liquids enter the product – as they may touch dangerous voltage points or short-out parts that could result in a fire or electric shock.
14. Do not dispose of batteries in a fire as they may explode. Batteries may also explode if damaged.
15. This product may contain magnetic parts. Metallic materials may be attracted to the product. Do not place credit cards or other magnetic storage media near the product, because information stored on them may be erased.
16. Use only with the cart, stand, tripod, bracket or table specified by the manufacturer or sold with the apparatus. When a cart is used, use caution when moving the cart/apparatus combination to avoid injury from tip-over.
17. Unplug this apparatus during lightning storms or when unused for long periods of time to prevent damage to this product.
18. To prevent risk of fire or electric shock, avoid overloading wall outlets, extension cords, or integral convenience receptacles.
19. The mains plug is used to disconnect the device and it shall remain readily operable. To completely disconnect the power input, the mains plug of the apparatus shall be disconnected from the mains.
20. Refer all servicing to qualified service personnel. Servicing is required when the apparatus has been damaged in any way, such as power-supply cord or plug is damaged, liquid has been spilled or objects have fallen into the apparatus; the apparatus has been exposed to rain or moisture, does not operate normally, or has been dropped.

Specifications

Frequency range +/- 3 dB [Hz]	38 – 16KHz
Control; response (remote control)	+,-8dB at 100Hz and 10KHz
Maximum SPL [dB]	97dBA
Amp. power	250W total
Crossover frequencies [Hz]	190/5,000
Tweeter drivers	1 x 1" m/c
Front main drivers	4 x 2 "
Spatial drivers	2 x 2" full-range
Enclosure type	Sealed/orbitsound spatial
Sub-Bass driver	1 x 6.5"
Sub-Bass Enclosure type	Tuned reflex
Connection input(s)	Stereo Line level -10dBu 3.5mm jack and RCA. TOSLINK optical digital input Bluetooth (wireless)
Output(s)	Subwoofer Low pass
Recommended placement	Bar, in front of television Sub, floor, port facing wall with clearance distance
Dimensions (H x W x D) [mm]	90 x 500 x 95mm (soundbar) 130 x 230 x 340mm (sub)
Cabinet finish	Soundbar: High gloss Subwoofer: High density PVC
Weight (in packaging)	10.4Kg
Power consumption Standby / Idle	0.4W / 4W
Voltage / Power	22V DC / 110-240v AC
Remote Control IR lead code	6122/01FE

ORBITSOUND