

M10 airSOUND™ BAR



USER'S GUIDE

version 2.0

ORBITSOUND



CONTENTS

Welcome	2
Product Overview	3
Getting Started	5
Advanced Setup & Use	9
Subwoofer Wireless	9
Other features	11
Maintenance	12
Troubleshooting	13
Specifications	16

Welcome

Thank you for purchasing the orbitsound M10 airSOUND BAR with wireless subwoofer and Bluetooth. With proper use the orbitsound M10 delivers superb sound fidelity, engaging airSOUND, and will provide you with a fantastic listening experience.

This instruction booklet covers important safety and setup information as well as advice on how to get the most out of your orbitsound M10.

Orbitsound contact information

ORBITSOUND LTD.

UK Support Tel: +44 (0)8456 521 219

Web support: www.orbitsound.com/support

Email: support@orbitsound.com

Package contents

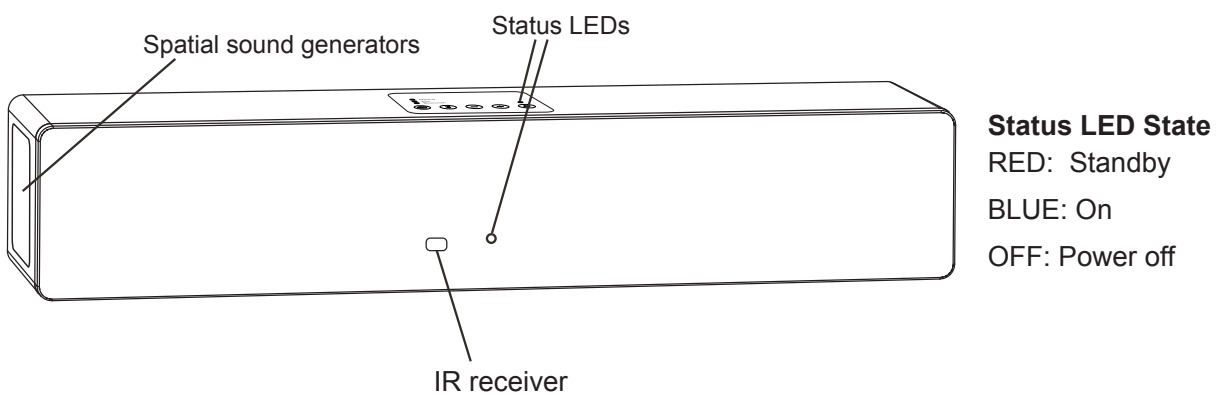
Inside the box you will find:

- M10 soundbar
- Wireless subwoofer
- Remote control
- Power supply + power cord (soundbar)
- Power cord (subwoofer)
- Quick start guide
- Safety and Warranty guide
- Analogue audio connection cable
- Digital optical (TOSLINK) connection cable

Note: This User Guide is available for online download only.

Product Overview

Soundbar

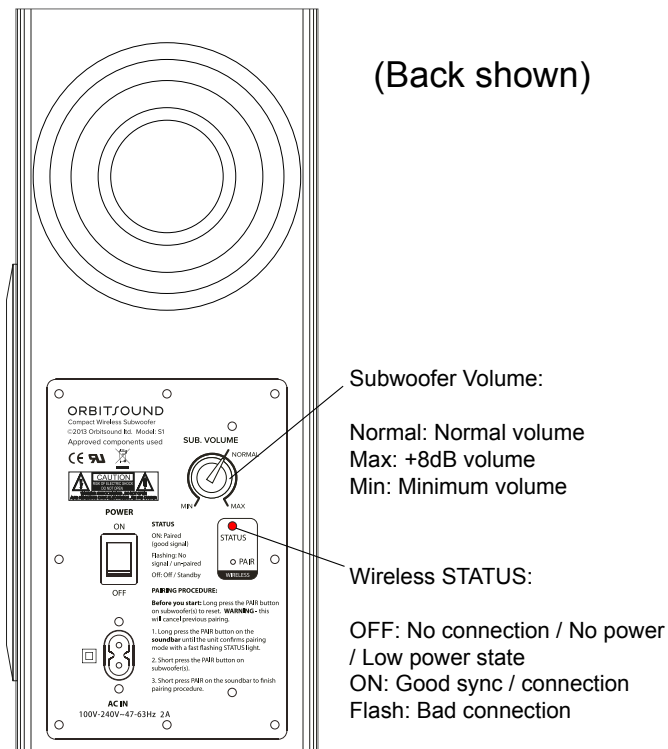


The orbitsound M10 soundbar delivers most of the sound that you hear. It produces the main signal and airSOUND spatial information that combine in your listening area to create a panorama of sound.

Remote control

The remote control provides volume control, tone control and sound source selection, and additionally playback controls when using a connected Bluetooth device.

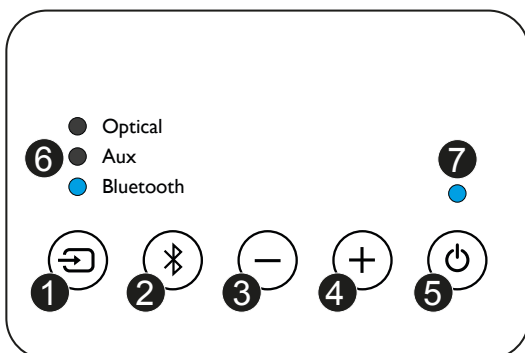
The subwoofer



The subwoofer is a wireless active loudspeaker that produces powerful Hi-Fi bass. It has been designed specially to complement the soundbar.

Control panel overview

The soundbar can be controlled from the control panel:



- 1. Source:** Press to cycle through the inputs. This controls what connected device is heard.
- 2. Bluetooth:** Short press to start playback through connected device. Long press (Press and hold) to enter pairing mode.
- 3. Vol - :** Reduce soundbar volume.
- 4. Volume +:** Increase soundbar volume
- 5. Standby:** Enter standby mode or power on.

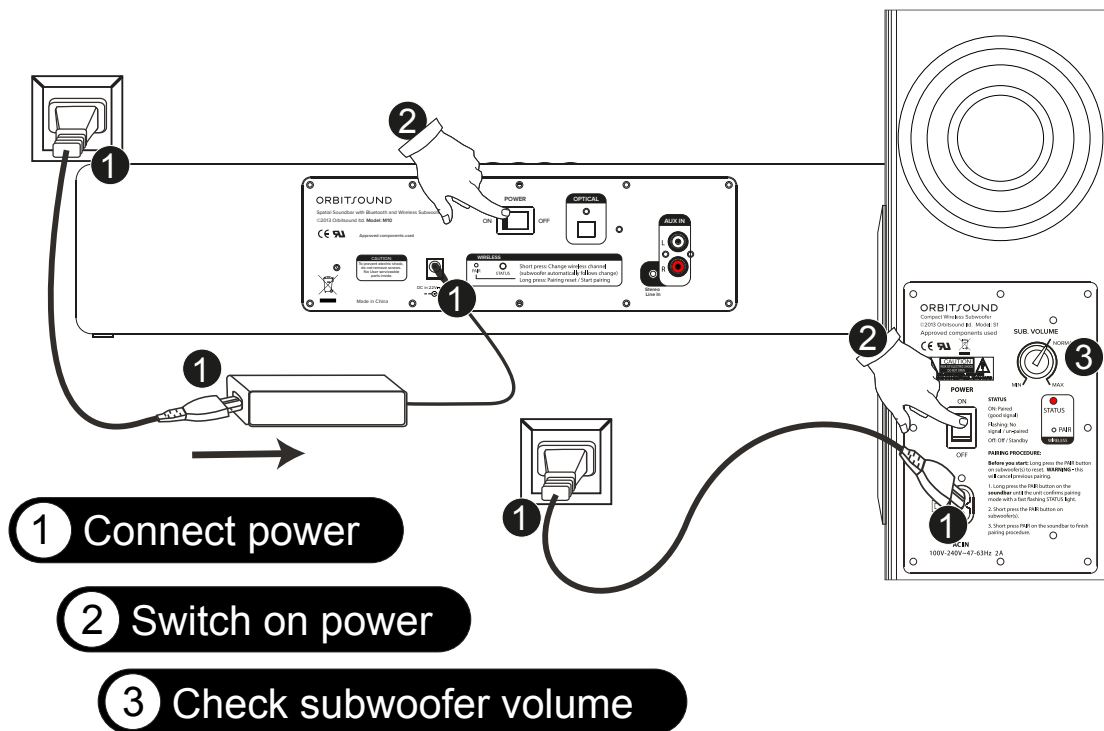
6. Source LED: Shows which source is currently playing

7. Status: Blue shows the soundbar is on.
Red shows standby.
(The light will flash when a button is pressed on the remote or on the control panel.)

Hint: Long press the power button to reset the soundbar. This will reset the source, volume, treble and bass memory to factory default settings. Press and hold for 3 seconds. The soundbar will confirm by flashing the power/status light 3 times. The unit will reset and optical source will be selected.

Getting Started

Setting up



1. Connect the power supply and mains cord to the soundbar. The subwoofer connects directly to the mains via a mains cord (all cables included).

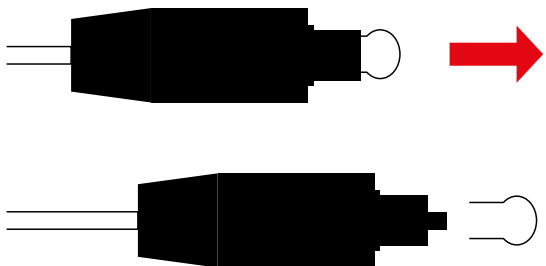
2. Switch on the power on both the soundbar and subwoofer.

3. Check the volume setting on the subwoofer. Point this to normal. You can adjust this later as preferred.

Hint: See advanced setup for more information on (3) subwoofer level. For the moment, set it to 'normal'

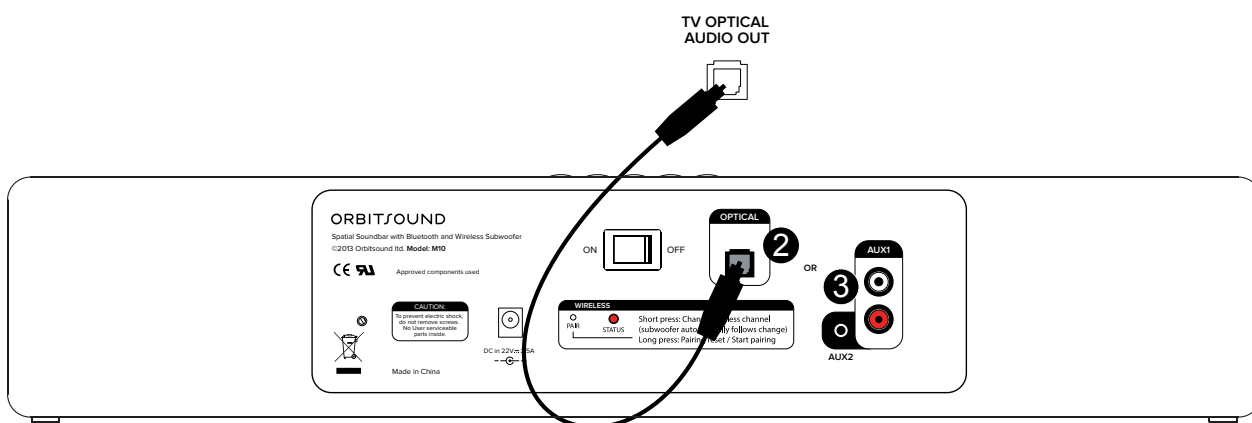
Connect the Soundbar to your TV

1) Remove plastic covers from optical cable:



IMPORTANT: Remove the protective plastic covers from a new TOSLINK (optical) cable before connecting to the optical sockets. Failure to remove these covers may result in damage and will interrupt the sound output.

2) Connect to your TV (optical)



HINT: When using the soundbar in this way, it is normal that the speakers on the TV will need to be turned down or muted to stop sound coming from the TV's own speakers.

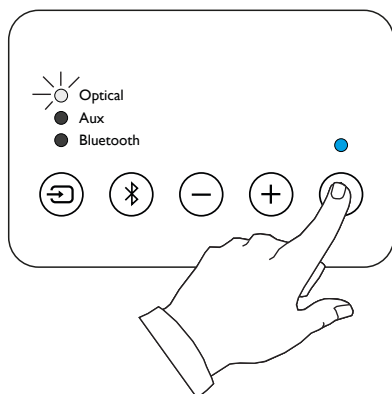
IMPORTANT: Make sure that the sound output mode for the optical output on the TV is set to 'PCM', or 'Normal'. This provides the best overall listening experience.

IMPORTANT: FIRMLY CONNECT THE OPTICAL CABLE UNTIL IT 'CLICKS'

If your TV does not have optical

Use the included analogue cable to connect the audio output from your TV to the soundbar. Note: Some TVs may only have a 3.5mm jack output, you can also use this output. If your TV has no audio output, you can connect the optical cable to your set top box.

3) Turn the soundbar ON:

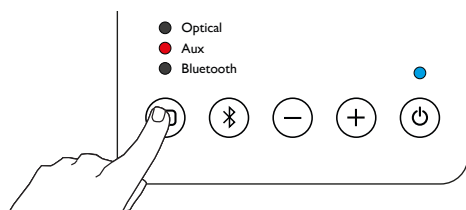


Press the power button. The indicator light will turn blue, and the optical indicator will light, showing the unit is playing the optical source.

You can now hear the sound from your TV via the digital optical cable.

Hint: Use the Volume + and - buttons to control playback volume.

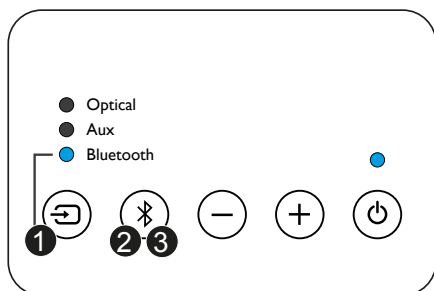
4) Changing Source



Pressing the source button on the control panel cycles through the inputs.

Bluetooth

You can connect your Bluetooth device for music playback.



- Solid blue light: You're paired!
- ⋯ Slow flash blue light: Looking for previously paired device
- ⚡ Fast flash blue light: In pairing mode

1. Press to select Bluetooth sound source. The Bluetooth source light will show the status of the Bluetooth connection.

2. To pair a new device: Press and hold the Bluetooth pairing button for 3 seconds. The Bluetooth source light will flash quickly to show that pairing mode has started. Look on your device for 'Orbitsound' in the Bluetooth device list, and pair with it. When a device is paired, the soundbar Bluetooth source light will change to solid blue.

3. If your device was previously paired, then you can short press the Bluetooth button to 'grab' the device and resume playback.

Note: If you are asked for a PIN number, enter '0000'.

AUX input

The Jack and RCA inputs (AUX) input can be heard by choosing 'AUX' on the control panel.

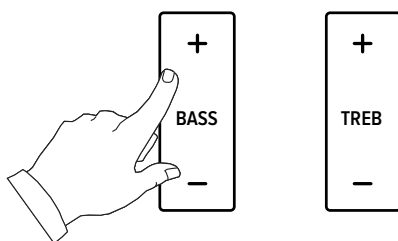
Hint: The RCA inputs and jack (3.5mm) inputs mix, so more than once external device can be connected. The soundbar will mix the 2 sources together.

Remote control

The control panel functions can also be done from the remote control:

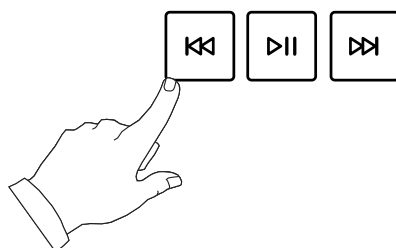
Source	Changes the input source
Volume + / -	Controls volume
Power	Enter standby / resume

Change tone: Bass and treble controls the sound:

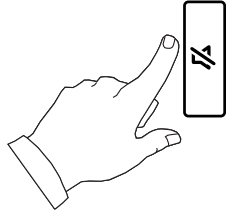


Note: Treble changes the sound of the soundbar + / - 5 steps.

Note: Bass changes the volume of the subwoofer remotely + / - 5 steps.



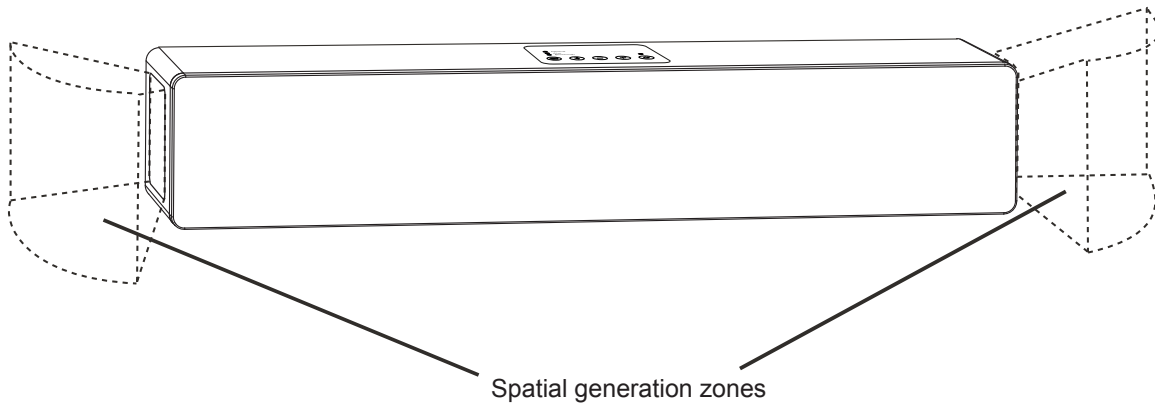
Remote playback: You can control the track and playback of a connected Bluetooth device.



Mute: Press the mute button to engage mute. This will stop all sound. The Soundbar status light will flash blue when mute is enabled. To resume play, press mute again.

Advanced Setup & Use

The orbitsound M10 is easy to set up and enjoy, but even better sound may be achieved by following these guidelines.



IMPORTANT: The areas marked need to be clear of obstacles in order for the spatial stereo sound field to work properly.

HINT: Because Orbitsound produces a uniform sound field, the soundbar does not need to be placed directly in front of the listener. Therefore, placing the soundbar conveniently so that the sides are not obstructed is more important than central placement, i.e. on low or high shelf, counter top, below/above TV.

Subwoofer placement

Subwoofer placement does not affect the overall sound much. Position the subwoofer for convenience after optimising placement of the soundbar.

IMPORTANT: Always make sure that the subwoofer's side with a port (rear) is clear from obstruction. Covering this port will adversely affect the sound.

Subwoofer volume

The subwoofer volume control on the back of the subwoofer allows you to preset the amount of bass that the system produces. Setting to 'normal' is the recommended balance. For quiet TV use, you can reduce the level. For louder music, you can increase the volume.

Hint: The Bass control on the remote also changes the volume of the subwoofer.

Hint: Once the subwoofer volume is set, you won't need to adjust it often. It is set for the conditions of the room.

Subwoofer Wireless

The Orbitsound subwoofer wireless system is uniquely developed to deliver the best possible listening experience in terms of minimal delay, and maximum sound fidelity. The system uses a digital 2.4GHz signal, similar to that used by computer WiFi systems.

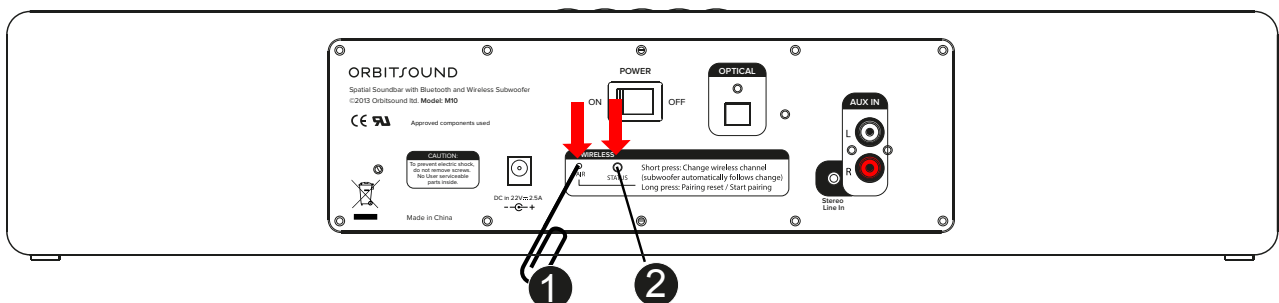
The soundbar and subwoofer should be paired for you from new, working out of the box.

Channel selection

If you experience intermittent sound, perhaps interference from a router, computer, or another sound device operating on the same frequency, you can change the channel that the Orbitsound wireless system is running on.

Note: Interference usually sounds like the bass is stopping and starting, and maybe a 'popping' sound. This is easily fixed by changing channel.

To change channel - Make sure the soundbar AND subwoofer are switched on:



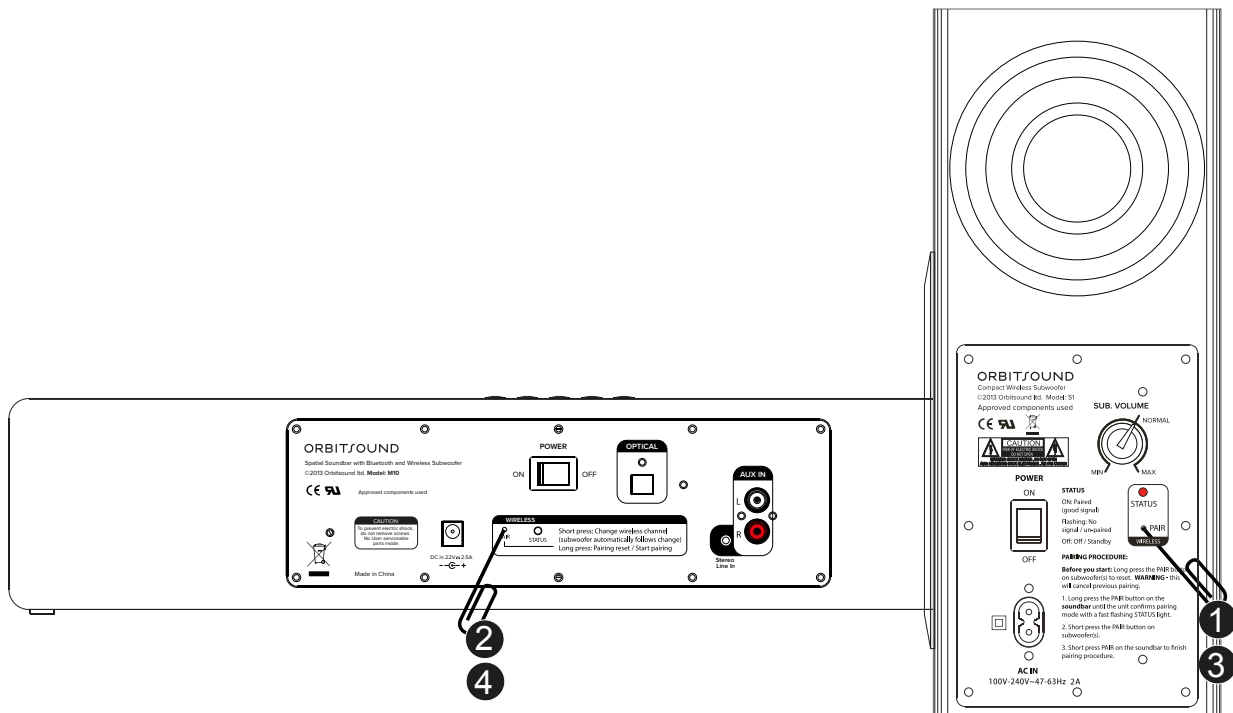
1. Use a paperclip to briefly press the 'PAIR' button on the soundbar rear panel. We recommend changing channel 2 times (2 presses) if you are hearing interference.

2. The PAIR status lights will flash on the soundbar and subwoofer. This acknowledges that the channel has changed.

Hint: There are a total of 10 channels. Shift the channel repeatedly until there is no more interference. The soundbar will remember the channel when power is disconnected, so once set, there is no need to re-set.

Subwoofer Pairing

To pair a subwoofer to the soundbar, follow this procedure:



1. (Optional Step - resets subwoofer) Long press the subwoofer pair button (this erases any previous pairing). The subwoofer STATUS will flash confirmation.
2. Long press the soundbar pair button to enter pairing mode. The soundbar pairing STATUS will slow flash to show it has entered pairing mode.
3. Short press the subwoofer pair button for it to join the soundbar. The LED will change it's flashing pattern to acknowledge.
4. Short press the soundbar pair button to exit pairing mode. The soundbar and subwoofer STATUS lights will light together to show successful paring.

Note: A short version of these instructions is printed on the subwoofer

Hint: You only need to re-pair a subwoofer if the STATUS light on it's rear panel is NOT showing solid red. I.e. if it is flashing, it is not currently paired with the soundbar.

Other features

Power saving

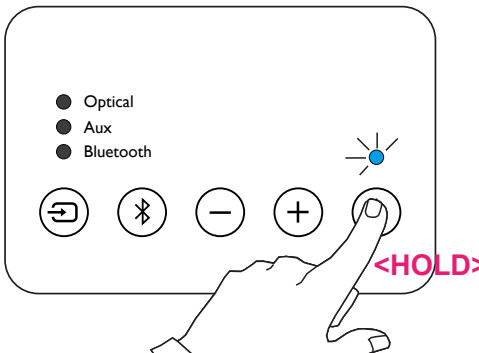
The M9 features a low power state with wireless subwoofer low-power control. When the soundbar enters standby mode, the power consumption reduces. It is recommended that Users routinely use standby mode to minimise household energy use.

Setting memory

When in standby mode, or if disconnected from the mains completely, the soundbar will remember settings for pairing, bass, treble, volume and source selection.

Note that the volume will be reduced if set very high when the unit restarts to protect the listener.

Reset soundbar settings



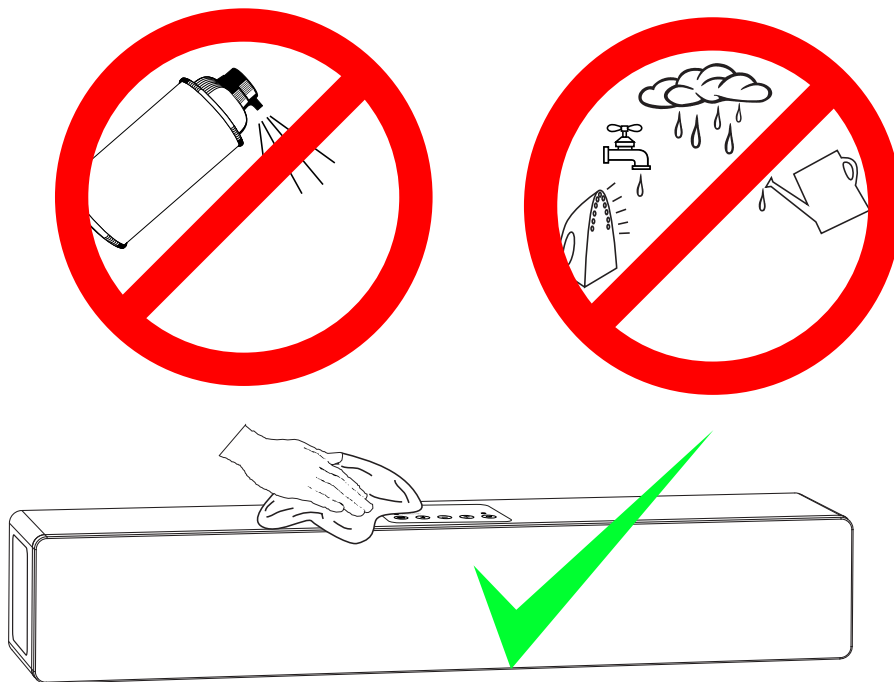
You may wish to reset the soundbar settings (returning everything to factory default). To do this, switch the unit on, then press and hold the power button for a few seconds on the control panel. The soundbar status light will flash, and then the soundbar will reset. Optical source will be selected when the reset is complete.

Bluetooth resume / grab

If you have previously paired your phone/tablet, there is no need to re-pair the device. Simply choose the Bluetooth source, then short press the Bluetooth button on the control panel (or press play/pause on the remote control). The soundbar will seek a previously paired device, and resume playback.

Maintenance

Cleaning and care advice



Use a soft, clean cloth moistened with plain, luke-warm water to clean the exterior of the unit. Glass cleaner is a good way to remove finger marks, but please use it sparingly, and avoid contact with the actual loudspeaker driver units.

IMPORTANT: Never use solvents such as benzene or other strong chemical cleaners since these could damage the unit's finish. It is **VERY** important that no liquid reaches the inside of the unit.

Troubleshooting

No sound is heard

Check power connections and that there is a continuous blue light on control panel.

Check that the TV or other sound source is playing and that it is connected properly to the soundbar. If unsure that your media device is playing, unplug, and test with headphones.

Press the sound source button on the remote control or control panel to change the sound source. The indicators show which source is playing.

Adjust the volume of the soundbar until sound is heard.

The sound is out of sync with the TV

Make sure all video sources are connected to the TV and that the soundbar is connected to the TV optical output or RCA (AUX) output. This connection method should re-align the sound. If it is still out of sync, look for a sound/time alignment menu in the TV menus.

Remote does not work

Check that plastic strip in remote has been removed.

If the remote has had a lot of use, replace the battery. We recommend type CR2032

Check there are no obstructions between the remote and the front of the soundbar.

Sound is distorted

Turn down the output of the device playing into the soundbar

Turn up the master volume on the soundbar if necessary.

Check that all audio connections are well seated / plugged in fully.

Sound is noisy / 'hissy'

Turn down the volume of the soundbar unit

Turn up the output volume of music source to compensate.

Use the digital optical (TOSLINK) inputs if possible to reduce noise.

Digital optical: 'Clicking' or no sound

Connect the TV optical output to the soundbar optical input preferentially.

Ensure both ends of the optical cable have had the protective plastic tip removed.

Ensure both ends of the cable have been inserted fully; a distinct 'click' will be felt when the cable is properly seated.

Check the output format of the optical signal from the playing device. Choose 'normal' or 'PCM' format. Refer to the TV manufacturer's handbook for more information. You can also contact Orbitsound for advice, see contact help line in this handbook and on the packaging.

No sound/broken sound from

subwoofer (soundbar working)

Check the subwoofer volume (back of subwoofer). Set to 'normal', then adjust to preference.

Switch off subwoofer, wait for 1 minute, and switch on the subwoofer to reset it.

Check power cables and power switches on soundbar and subwoofer.

Try a different wireless channel. Use a paperclip to short press the pair button on the back of the soundbar. (See Channel selection)

If the subwoofer STATUS light is not lit, re-pair the subwoofer (see Pairing)

Battery replacement (remote)

Replace remote battery with anode up (+) from back-side. Use type CR2032 Lithium battery.



Specifications

Frequency range +/- 3 dB [Hz]	38 – 16KHz
Control; response (remote control)	LF: +,-8dB subwoofer volume HF: 10KHz +/- 8dB EQ
Maximum SPL [dB]	97dBA
Amp. power	280W total
Crossover frequencies [Hz]	190/5,000
Tweeter drivers	1 x 1" m/c
Front main drivers	4 x 2" Orbitsound mk2
Spatial drivers	2 x 2" Orbitsound mk2
Enclosure type	Sealed/orbitsound spatial
Sub-Bass driver	1 x 6.5"
Sub-Bass Enclosure type	Tuned reflex
Connection input(s)	Stereo Line level -10dBu 3.5mm jack and RCA. TOSLINK optical digital input Bluetooth (wireless)
Output(s)	Orbitsound 2.4GHz audio
Recommended placement	Bar, in front of television Sub, floor, port facing rear
Dimensions (H x W x D) [mm]	90 x 500 x 100mm (soundbar) 135 x 230 x 320mm (sub)
Cabinet finish	Soundbar: High gloss Subwoofer: High density PVC
Weight (in packaging)	11.4Kg
Power consumption Standby / Idle	0.4W / 4W
Voltage / Power	22V DC / 110-240v AC
Remote Control IR lead code	6122/01FE

E&OE Exceptions and omissions excluded

FCC Statement:

This device complies with Part 15 of the FCC Rules. Operation is subject to the following two conditions: (1) this device may not cause harmful interference, and (2) this device must accept any interference received, including interference that may cause undesired operation. Any changes or modifications not expressly approved by the party responsible for compliance could void the user's authority to operate the equipment.

THE MANUFACTURER IS NOT RESPONSIBLE FOR ANY RADIO OR TV INTERFERENCE CAUSED BY UNAUTHORIZED MODIFICATIONS OR CHANGE TO THIS EQUIPMENT. SUCH MODIFICATIONS OR CHANGE COULD VOID AND CHANGE ANTENNA WHICH THE MANUFACTURER PROVIDES. IT IS THE USER'S AUTHORITY TO OPERATE THE EQUIPMENT.

This equipment has been tested and found to comply with the limits for a Class B digital device, pursuant to part 15 of the FCC Rules. These limits are designed to provide reasonable protection against harmful interference in a residential installation. This equipment generates, uses and can radiate radio frequency energy and, if not installed and used in accordance with the instructions, may cause harmful interference to radio communications. However, there is no guarantee that interference will not occur in a particular installation. If this equipment does cause harmful interference to

radio or television reception, which can be determined by turning off and on, the user is encouraged to try to correct the interference by one or more of the following measures:

- Reorient or relocate the receiving antenna.
- Increase the separation between the equipment and receiver.
- Connect the equipment into an outlet on a circuit different from that to which the receiver is connected.
- Consult the dealer or an experienced radio/TV technician for help.

This equipment complies with FCC radiation exposure limits set forth for an uncontrolled environment. To maintain compliance with FCC's RF exposure guidelines, this equipment should be installed and operated with a minimum distance of 20cm between radiator and your body. This transmitter must not be co-located or operating in conjunction with any other antenna or transmitter.

WARNINGS

- To reduce the risk of fire or electric shock, do not expose this apparatus to rain or moisture. The apparatus shall not be exposed to dripping or splashing and that objects filled with liquids, such as vases, shall not be placed on apparatus
- Where the mains plug or appliance coupler is used as the disconnect device, such disconnect device shall remain readily operable
- Only use AC/DC adaptor specified rating: Input 100-240Vac, 50-60HZ; Output 22Vdc, 2.5A. This product is intended to be used only with the power supply provided
- The direct plug-in adaptor is used as disconnect device, the disconnect device shall remain readily operable (for speaker)

Important Safety Information

1. Read these instructions.
2. Keep these instructions.
3. Heed all warnings – on the product and in the owner's guide.
4. Follow all instructions.
5. Do not use this apparatus near water.
6. Clean only with a dry cloth.
7. Do not block any ventilation openings. Install in accordance with the manufacturer's instructions.

8. Do not install near any heat sources, such as radiators, heat registers, stoves or other apparatus (including amplifiers) that produce heat.

9. No naked flame sources, such as lighted candles, should be placed on the apparatus.

10. Do not defeat the safety purpose of the polarized or grounding-type plug. A polarized plug has two blades with one wider than the other. A grounding-type plug has two blades and a third grounding prong. The wider blade or third prong is provided for your safety. If the provided plug does not fit in your outlet, consult an electrician for replacement of the obsolete outlet.

11. Protect the power cord from being walked on or pinched, particularly at plugs, convenience receptacles, and the point where they exit from the apparatus.

12. Only use attachments/accessories specified by Orbitsound.

13. Do not let objects or liquids enter the product – as they may touch dangerous voltage points or short-out parts that could result in a fire or electric shock.

14. Do not dispose of batteries in a fire as they may explode. Batteries may also explode if damaged.

15. This product may contain magnetic parts. Metallic materials may be attracted to the product. Do not place credit cards or other magnetic storage media near the product, because information stored on them may be erased.

16. Use only with the cart, stand, tripod, bracket or table specified by the manufacturer or sold with the apparatus. When a cart is used, use caution when moving the cart/apparatus combination to avoid injury from tip-over.

17. Unplug this apparatus during lightning storms or when unused for long periods of time to prevent damage to this product.

18. To prevent risk of fire or electric shock, avoid overloading wall outlets, extension cords, or integral convenience receptacles.

19. The mains plug is used to disconnect the device and it shall remain readily operable. To completely disconnect the power input, the mains plug of the apparatus shall be disconnected from the mains.

20. Refer all servicing to qualified service personnel. Servicing is required when the apparatus has been damaged in any way, such as power-supply cord or plug is damaged, liquid has been spilled or objects have fallen into the apparatus; the apparatus has been exposed to rain or moisture, does not operate normally, or has been dropped.

ORBITSOUND

ORBITSOUND LTD.
+44 (0)8456 521 219
www.orbitsound.com/support
support@orbitsound.com