



TPMS TP001

Tire pressure monitoring system

Manual

Index:

- 1.Notice of usage
- 2.Specification
- 3.Installation of battery
- 4.QR code sticker
- 5.App installation & device installation
- 6.Error code & status
- 7.Program pause
- 8.Notice
- 9.Warranty

Package includes :

1.TPMS set (including sensor/ CR2032 battery/ bolt)



- 4 sensors for car version
- 2 sensors for motorcycle version
- single sensor package

2.Wrench*1



1. Notice of usage

Reminder:

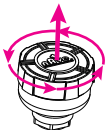
1. Using chemical sealing system inside the tire could lead to TPMS malfunction.
2. Regularly check tire valve & external treads to make sure they work properly, as TPMS is only an optional safety equipment.
3. TPMS wireless signals could be lost by interference, wrongly operation and installation could also lead to signal loss.
4. Proper tire pressure and good maintenance will save your gasoline consumption and a safe journey.

2.Specification

| | |
|-------------------------|---|
| Dimension: | Width:24.4mm* Height:22.68mm |
| Weight: | 7.5g±0.2g(per sensor) |
| Transmission distance: | 10~30m line of sight |
| Operation temp: | -20°C~85°C |
| Tir pressure range: | 0 KPa~800KPa |
| Battery: | CR-2032 (3.0V) |
| Max power consumption: | 107 μ A |
| Transmission interface: | Bluetooth BT 4.0 (BLE) |
| RF | 2.4-GHz/Bluetooth/Low Energy Compliant Output Power : 0dBm |

3.Installation of battery

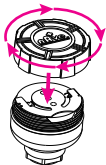
1.Open the lid counter-clockwise.



2.Insert CR2032 battery with "+" facing up.



3.close the lid clock-wise



4.Finish



Notice:
Please only use CR2032 battery for battery swap. Wrong battery could lead to malfunction and damage.

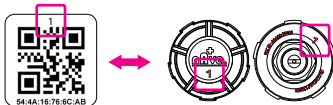
4. QR code sticker

QR code sticker is included inside the package, please do not lost it.
QR code sticker number should match with TPMS sensor number
, please pair the sensors by order on your phone app.

a.



b.



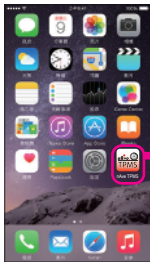
5.App & TPMS installation & usage

5-1.APP download

A.Please search “nAve TPMS” , and installation for free.



B.Open the app, the app ca be used with your phone either vertically or horizontally.



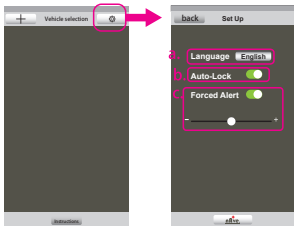
5-2.App setup

Click “  ” for setting

A.Choose your language: Japanese, English,Chinese (simplified), Chinese (traditional)

B.B.Choose “always-on” mode, then the app will always on.

C.Turn on alarm overwrite mode, system alarm sound will function even in phone silent mode. Adjust the volume to 50%~100%.



5-3.Build up new vehicle info

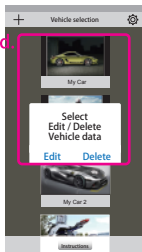
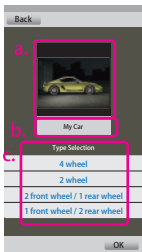
Press “ + ” enter vehicle info

A.Press picture area to choose picture from database or to take a photo.

B.Name your vehicle by pressing name area

C.Choose vehicle spec, then press finish.

D.To redo or edit, press the picture 3 secs.

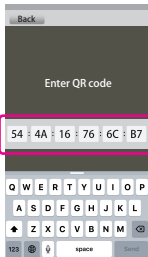
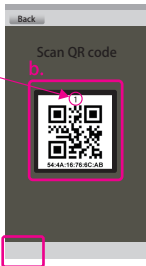
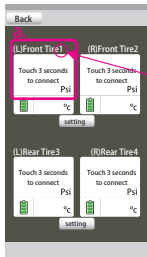


5-4. Pairing the sensor

Pairing the sensor on your App, please follow serial number and pair in order.

A. Press 3 sec for pairing mode.

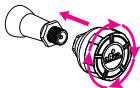
B. Scan QR code with your phone for pairing, or enter the serial number below QR code for pairing.



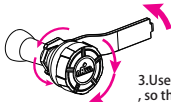
5-5.Installation of sensors



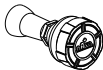
1.Lock the bolt onto the valve clock-wise.



2.Lock the sensor (with battery) onto the valve clock-wise.



3.Use wrench to fasten the bot counter clock-wise , so the sensor & bolt will lock tightly.

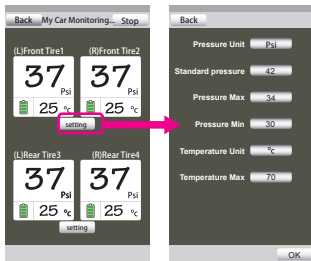


4.Finish, then apply soap water on the sensor to see if leaking.

5-6. Tire pressure setup

Press setup button to setup tire pressure.

Follow the suggested tire pressure range from tire company, tire pressure range can be set up automatically or manually.



6.Error code

A. Wrong tire pressure

Too low or too high, the background color will turn red + alarm sound

B. Wrong tire temperature

Too low or too high, the background color will turn red + alarm sound

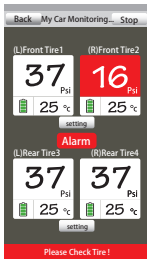
C. Sensor malfunction:

1. Please check if the sensor is missing

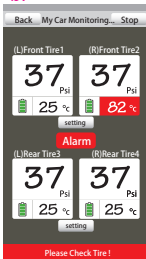
2. Please re-pair, choose **pause** then **connect** a gain or scan QR code to re-pair.

3. If the sensor is mail-functional, please contact your dealer.

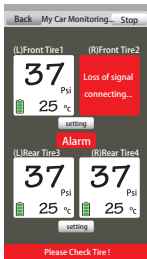
a.



b.

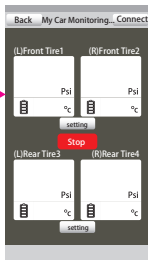


c.



7. Program pause

1. Press " pause " button on right top of your app screen to pause.
2. Press " connect " button again on right top to resume.



8.Notice

- 1.TPMS cannot guarantee the safety of your trip, please check your tire regularly.
- 2.Please pull over whenever you sees/hears alarm.
- 3.TPMS cannot detect any instant tire damage from outside environment.
4. Do not operate TPMS and drive at the same time.
- 5.Sensor battery life varies by battery quality and usage.
- 6.please only use CR2032 battery for battery swap. Wrong battery could lead to malfunction and damage.
- 7.Recycle the dead battery
- 8.Battery power shortens by regular usage and battery life could also shorten under -20C environment.
- 9.Sensor could not be working if battery voltage is too low, please change batteries.
- 10.Tire pressure varies when temperature inside/outside the tire varies.
- 11.Please park your vehicle properly to avoid any damage/lost to TPMS.
- 12.TPMS device is IP67 certified, but please do not soak the sensor into water or chemicals for a long time.
- 13.Please consult tire vendor or professionals for related tire index.

9.Warranty

Thank you for purchasing this device, we provide limited one year warranty upon your purchase date, please do not lost your QR code sticker , warranty card.

Below conditions are not within our warranty:

- 1.Product damaged by nature cause
- 2.Product damaged by miss-use
- 3.Product damaged by not following the manual instruction
- 4.Product failure not caused by product
- 5.Use non-original parts.
- 6.Product failure by battery out.

Disclaimer:

This TPMS device is only an optional accessory, any car accidents by driver behavior or by damaged tire is not a responsibility to the manufacturer.



Manufacturer:

ICHI TECHNOLOGIES, INC.

268, Hwa-Ya 2nd Road, Hwa-Ya Park,
Gueishan, Taoyuan, Taiwan. R.O.C.

Designed in Taiwan, Made in China

NCC警語

NCC 警語 低功率電波輻射性電機管理辦法

第十二條

型式認證合格之低功率射頻電機，非經許可，公司、商號或使用者均不得擅自變更頻率、加大功率或變更原設計之特性及功能。

第十四條

低功率射頻電機之使用不得影響飛航安全及干擾合法通信；經發現有干擾現象時，應立即停用，並改善至無干擾時方得繼續使用。

前項合法通信，指依電信法規定作業之無線電通信。低功率射頻電機須忍受合法通信或工業、科學及醫療用電波輻射性電機設備之干擾。

警告 任何的自行修改或變更系統本體，將無法保證使用者的權益繼續受到保護。

符合歐盟法規(European Union Regulatory Conformance)

本設備的CE標誌，符合歐盟 R&TTE Directive 1999/5/EC 的基本要求及其他相關規定。

本設備符合下列標準：

EN 300 328，EN62479，EN 301 489-1&17，EN 60950-1 符合歐盟法規的聲明(EU Declaration of Conformity)

Salutica Allied Solutions Sdn. Bhd. 在此鄭重聲明此藍芽設備符合 1999/5/EC 的基本要

求和其他相關規定。

FCC 聲明

FCC Compliance and Advisory Statement

This device complies with Part 15 of the FCC rules. Operation is subject to the following two conditions: (1) this device may not cause harmful interference, and (2) this device must accept any interference received, including interference that may cause undesired operation.

This equipment has been tested and found to comply with the limits for a Class B digital device, according to Part 15 of the FCC rules. These limits are designed to provide reasonable protection against harmful interference in a residential installation. This equipment generates, uses and can radiate radio frequency energy and if not installed and used in accordance with the instructions, may cause harmful interference to radio communications. However, there is no guarantee that interference will not occur in a particular installation. If this equipment does cause harmful interference to radio or television reception, which can be determined by turning the equipment off and on, the user is encouraged to try correct the interference by one or more of the following measures:

1. Reorient the receiving antenna.
2. Increase the separation between the equipment and receiver.
3. Connect the equipment into an outlet on a circuit different from that to which the receiver is connected.
4. Consult the dealer or an experienced radio/TV technician for help.

Any special accessories needed for compliance must be specified in the instruction manual.

Warning: A shielded-type power cord is required in order to meet FCC emission limits and also to prevent interference to the nearby radio and television reception. It is essential that only the supplied power cord be used. Use only shielded cables to connect I/O devices to this equipment.

CAUTION: Any changes or modifications not expressly approved by the party responsible for compliance could void your authority to operate the equipment.