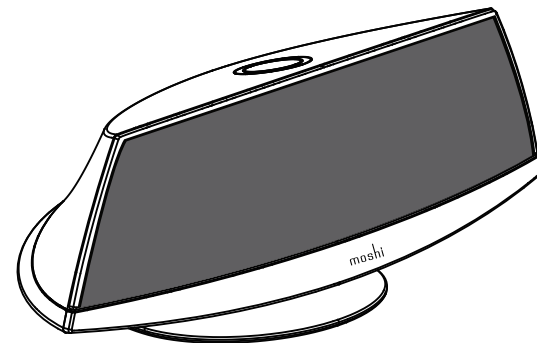


moshi
pioneer of electronics fashion

spatia

gratify your senses · electrify your soul

Preparations for listening to music via your home network



PRODUCT NAME: WIRELESS SPEAKER SYSTEM
MODEL: Spatia
MODULE: CX870-3IB
INPUT: 24V ~ 2.5A
USB OUTPUT: 5V ~ 2.1A

www.moshimonde.com
copyright © 2013 aevoe corp. all rights reserved.



Copyright © 2014 Aevoe Corp. Printed in China 4712052314658

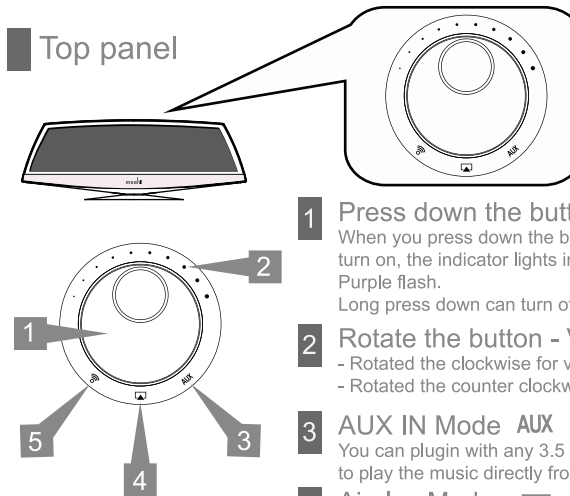
Quick Start Guide

What's in the box

Please confirm that the following accessories are in the box when you open it.

- Moshi Spatia Speaker
- Power Cord
- AC Adapter
- Quick Start Guide
- Warranty Card

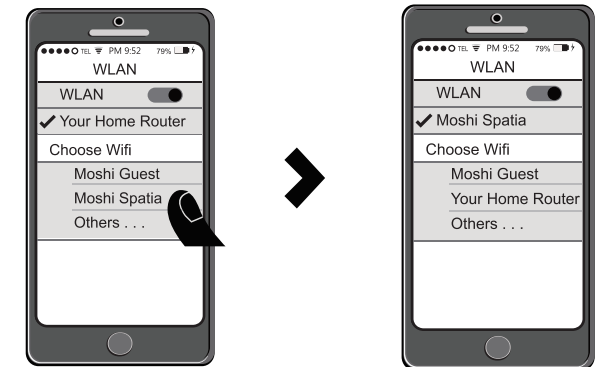
Top panel



- 1 Press down the button - Power**
When you press down the button, the power will turn on, the indicator lights in the front will be Purple flash.
Long press down can turn off the speaker.
- 2 Rotate the button - Volume**
- Rotated the clockwise for volume up.
- Rotated the counter clockwise for volume down.
- 3 AUX IN Mode AUX**
You can plugin with any 3.5 mm AUX cable to play the music directly from your player
- 4 Airplay Mode**
You can play any music through your home wifi network.
- 5 JB Direct Mode**
You can play any music direct connect through speaker from your cellphone wifi network.

Play your music using JB Direct

- 1** JB Direct Setting
- 1** Turning the speaker on
- 2** Make sure the speaker is on JB direct mode () Blue light flash
- 3** Connecting your cell phone device with speaker



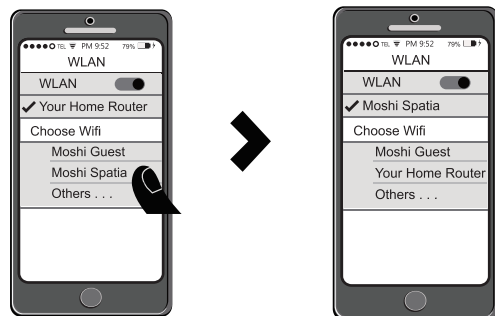
- 4** Play your music through Airplay



Web page Setting

(Suit for IOS and Android system)

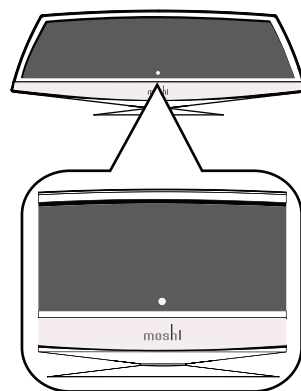
- 1** Turning the speaker on
- 2** Make sure the speaker is on JB direct mode () Blue light flash
- 3** Connecting your cell phone device with speaker



- 4** Go to the web page through your cell phone device.
- 5** Key in the web address at : <http://192.168.1.12>
- 6** Apply the network you select
- 7** Change your speaker mode from JB direct back to Airplay mode. Play your music through Airplay

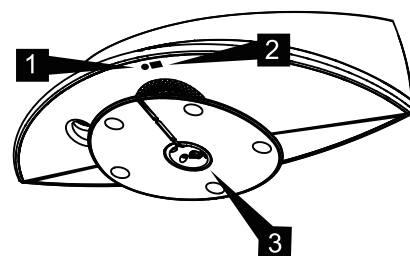


Front panel indicator



- 1 Input indicator**
When the input source changes, this indicator lights. The indicator's color changes as noted below.
 - Light OFF - Aux IN
 - Lights Green - Airplay
 - Lights Blue - JB Direct
- 2 network indicator**
When the network status changes, this indicator lights.
 - Lights Red (Steady) - Firmware update
 - Lights Purple (flash) - Operating Instructions
 - Lights Green (flash) - Wifi network setting
 - Lights Green (Steady) - Wifi network connected
 - Lights Blue (flash) - Wifi network setting with your cell phone
 - Lights Blue (Steady) - Wifi network connected with your cell phone

Connections



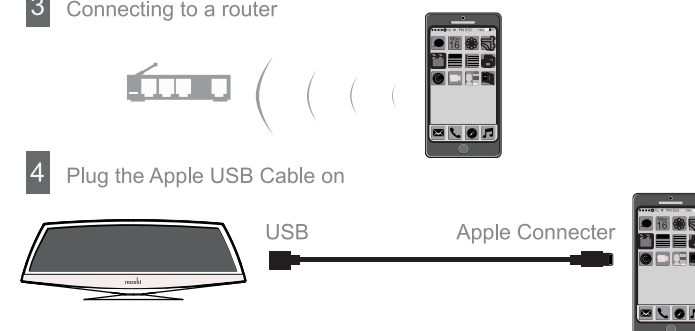
- 1** AUX - Stereo mini-plug cable
- 2** Apple USB Cable - Apple connection USB cable (30pins and Lightning)
- 3** AC adapter - AC adapter with Power cord (Supplied)

Set up this Airplay speaker on your home network

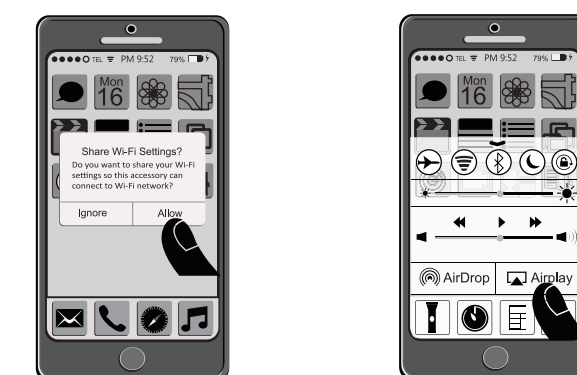
Set up the speaker as shown below

Smart Setting

- 1** Turning the speaker on
- 2** Make sure the speaker is on Airplay mode () Green light flash
- 3** Connecting to a router



- 4** Plug the Apple USB Cable on
- 5** Share Wifi Settings
- 6** Play your music through Airplay



WAC Setting

- 1** Turning the speaker on
- 2** Make sure the speaker is on Airplay mode () Green light flash
- 3** Connecting to a router



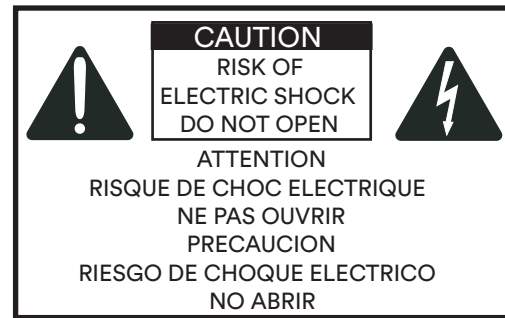
- 4** Open the WLAN setting Choose set up the new Airplay Speaker
- 5** Play your music through Airplay



English

Introduction

This document includes statutory safety instructions and statements, guarantee information, and a CE Declaration of Conformity. Please read this document before installing and using your mu-so.



This symbol is intended to alert the user to the presence of uninsulated "dangerous voltage" within the product's enclosure that may be of sufficient magnitude to constitute a risk of electric shock to persons.



This symbol is intended to alert the user to the presence of important operating and maintenance (servicing) instructions in the literature accompanying the appliance.

Important Safety Instructions

1. Read these instructions – All the safety and operating instructions should be read before this product is operated.
2. Keep these instructions – The safety and operating instructions should be retained for future reference.
3. Heed all warnings – All warnings on the appliance and in the operating instructions should be adhered to.
4. Follow all instructions – All operating and use instructions should be followed.
5. Do not use this apparatus near water – The appliance should not be used near water or moisture – for example, in a wet basement or near a swimming pool, and the like.
6. Clean only with a dry cloth.
7. Do not block any ventilation openings. Install in accordance with the manufacturer's instructions.
8. Do not install near any heat sources such as radiators, heat registers, stoves, or other apparatus (including amplifiers) that produce heat.
9. Do not defeat the safety purpose of the polarized plug. A polarized plug has two blades with one wider than the other. The wide blade or the third prong is provided for your safety. If the provided plug does not fit into your outlet, consult an electrician for replacement of the obsolete outlet.
10. Protect the power cord from being walked on or pinched particularly at the plugs, convenience receptacles, and at the point where it exits from the apparatus.
11. Only use attachments/accessories specified by the manufacturer.
12. Use only with the cart, stand, tripod, bracket, or table specified by the manufacturer, or sold with the apparatus. When a cart or rack is used, use caution when moving the cart/apparatus combination to avoid injury from tip-over.
13. Unplug the apparatus during lightning storms or when unused for long periods of time.
14. Refer all servicing to qualified service personnel. Servicing is required when the apparatus has been damaged in any way, such as; the power-supply cord or plug is damaged, liquid has been spilt or objects have fallen into the apparatus, the apparatus has been exposed to rain or moisture, does not operate normally, or has been dropped.
15. CAUTION: Servicing instructions are for use by qualified service personnel only. To reduce the risk of electric shock, do not perform any servicing other than that contained in the operating instructions unless you are qualified to do so.
16. Do not install this equipment in a confined or built-in space such as a book case or similar unit. The equipment must remain in well ventilation conditions. Ventilation should not be impeded by covering the ventilation openings with items such as newspaper, table-cloths, curtains etc.
17. WARNING: Only use attachments/accessories (such as the battery etc.) specified or provided by the manufacturer.
18. WARNING: Refer to the information on the underside of the enclosure for electrical and safety information before installing or operating the apparatus.
19. WARNING: To reduce the risk of fire or electric shock do not expose this apparatus to rain or moisture. The apparatus shall not be exposed to dripping or splashing and objects filled with liquids, such as vases, shall not be placed on apparatus.



20. CAUTION: Danger of explosion if battery is incorrectly replaced. Replace only with the same or equivalent type.
21. WARNING: The battery shall not be exposed to excessive heat such as sunshine, fire or the like.
22. WARNING: The appliance coupler is used as disconnect device, the disconnect device shall remain readily operable.
23. WARNING: DO NOT INGEST BATTERY. CHEMICAL BURN HAZARD.
24. This product contains a coin/button cell battery. If the battery is swallowed, it can cause severe internal burns in just 2 hours and can lead to death.
25. Keep new and used batteries away from children. If the battery compartment does not close securely, stop using the product and keep it away from children.
26. If you think batteries might have been swallowed or placed inside any part of the body, seek immediate medical attention.
27. When the apparatus is not in use or during its relocation, take care of the power cord and plugs; e.g. tie up the power cord with cable tie or similar. The tie must be free from sharp edges and the like that might cause abrasion of the power cord. When put into use again ensure the power cord and plugs are not damaged. If any damage is found the power cord and plugs should be replaced by items either specified by the manufacturer or that have same characteristics as the original items.

28. This equipment is a Class II or double insulated electrical appliance. It has been designed in such a way that it does not require a safety connection to electrical earth.



29. This lightning flash with arrowhead symbol within an equilateral triangle is intended to alert the user to the presence of non-insulated "dangerous voltage" within the product's enclosure that may be of sufficient magnitude to constitute a risk of electric shock. WARNING: To reduce the risk of electric shock, do not remove cover (or back) as there are no user-serviceable parts inside. Refer servicing to qualified personnel.

- The exclamation point within an equilateral triangle is intended to alert the user to the presence of important operating and maintenance instructions in the literature accompanying the appliance.

30. CAUTION: To prevent electric shock hazard, replace grille. (CSA 60065, clause 5.3A)



This product can be recycled. Products bearing this symbol must NOT be thrown away with normal household waste. At the end of the product's life, take it to a collection point designated for recycling of electrical and electronic devices. Find out more about return and collection points through your local authority. The European Waste Electrical and Electronic Equipment (WEEE) Directive was implemented to dramatically reduce the amount of waste going to landfills, thereby reducing the environmental impact on the planet and on human health. Please act responsibly by recycling used products. If this product is still useable, consider giving it away or selling it.

FCC Statement

This device complies with FCC radiation exposure limits set forth for an uncontrolled environment. This device complies with Part 15 of the FCC Rules. Operation is subject to the following two conditions: (1) this device may not cause harmful interference, and (2) this device must accept any interference received, including interference that may cause undesired operation.

This equipment has been tested and found to comply with the limits for a Class B digital device, pursuant to Part 15 of the FCC rules. These limits are designed to provide reasonable protection against harmful interference in a residential installation. This equipment generates, uses and can radiate radio frequency energy and, if not installed and used in accordance with the instructions, may cause harmful interference to radio communications. However there is no guarantee that interference will not occur in a particular installation. If this equipment does cause harmful interference to radio or television reception, which can be determined by turning the equipment off and on, the user is encouraged to try to correct the interference by one or more of the following measures:

- Reorient or relocate the receiving antenna
- Increase the separation between the equipment and receiver
- Connect the equipment into an outlet on a circuit different from that to which the receiver is connected
- Consult the dealer or an experienced radio/TV technician for help.

Only operate the device in accordance with the instructions supplied. This device complies with FCC radiation exposure limits set forth for an uncontrolled environment. In order to avoid the possibility of exceeding the FCC radio frequency exposure limits, human proximity to the antenna shall not be less than 20cm (8 inches) during normal operation. Changes or modifications not expressly approved by the party responsible for compliance could void the user's authority to operate the equipment.

IC Statement

This device complies with Industry Canada licence-exempt RSS standard(s). Operation is subject to the following two conditions : (1) this device may not cause interference, and (2) this device must accept any interference, including interference that may cause undesired operation of the device.

Le présent appareil est conforme aux CNR d'Industrie Canada applicables aux appareils radio exempts de licence. L'exploitation est autorisée aux deux conditions suivantes : (1) l'appareil ne doit pas produire de brouillage, et (2) l'utilisateur de l'appareil doit accepter tout brouillage radioélectrique subi, même si le brouillage est susceptible d'en compromettre le fonctionnement.

The device meets the exemption from the routine evaluation limits in section 2.5 of RSS 102 and compliance with RSS-102 RF exposure. Users can obtain Canadian information on RF exposure and compliance.

Le dispositif rencontre l'exemption des limites courantes d'évaluation dans la section 2.5 de RSS 102 et la conformité à l'exposition de RSS-102 RF, utilisateurs peut obtenir l'information canadienne sur l'exposition et la conformité de RF.

This equipment complies with IC radiation exposure limits set forth for an uncontrolled environment.

Cet équipement est conforme à l'exposition aux rayonnements IC limites établies pour un environnement non contrôlé.

Cet appareil numérique de classe B est conforme aux normes canadiennes ICES-003 et RSS-210. Son fonctionnement est soumis aux deux conditions suivantes : (1) cet appareil ne doit pas causer d'interférence et (2) cet appareil doit accepter toute interférence, notamment les interférences qui peuvent affecter son fonctionnement.

This Class B digital apparatus complies with Canadian ICES-003.

Cet appareil numérique de la classe B est conforme à la norme NNB-003 du Canada.

This Category II radiocommunication device complies with industry Canada Standard RDD-310.

Ce dispositif de radiocommunication de catégorie II respecte la norme CNR-310 d'Industrie Canada.

Guarantee Information

To the fullest extent permitted by applicable law, Naim Audio Ltd. disclaims all liability for any loss or damages whether real, incidental or consequential that arise from using this product. Naim Audio Limited, its agents and representatives, cannot be held responsible for the loss of any data or content from a Naim/NaimNet server, however caused. Do not under any circumstances allow anyone to modify your Naim equipment without first checking with the factory, your retailer, or your distributor. Unauthorised modifications will invalidate your guarantee.