

BLUETOOTH MINI SPEAKER SBL 4.1 A1
Operating Instructions

Bluetooth Mini Speaker

Thank you for your trust!

Congratulations on your new Bluetooth mini speaker.

For a safe handling of the device and in order to get to know the entire scope of features:

- **Thoroughly read these operating instructions prior to initial commissioning.**
- **Above all, observe the safety instructions!**
- **The device should only be used as described in these operating instructions.**
- **Keep these operating instructions for future reference.**
- **If you pass the device on to someone else, please include these operating instructions. The operating instructions are a part of the product.**

We hope you enjoy your new Bluetooth mini speaker!

The Bluetooth® brand and corresponding logos are the property of Bluetooth SIG, Inc.
All other names and trademarks are the property of their respective owners.

Intended purpose

This is a consumer electronics device. The Bluetooth speaker is intended for playing sound from audio devices. The device has a hands-free function. The device is designed for private, domestic use. This device must not be used for commercial purposes.

Safety information

Warnings

If necessary, the following symbols and warnings will be used in these operating instructions:

- DANGER!** This symbol, in combination with the note "Danger" means a high risk. Failure to observe this warning may result in injury to life and limb.
- WARNING!** This symbol, in combination with the note "Warning" means a moderate risk. Failure to observe this warning may result in injury or serious material damage.

DANGER! Risk of electric shock!
CAUTION: low risk: failure to observe this warning may result in minor injury or material damage.

NOTE: circumstances and specifics that must be observed when handling the device.

DANGER for children and people with disabilities
Packing materials are not children's toys. Children must not play with the packing material. **There is a risk of suffocation!**

- ⊙ This device is not designed to be used by people (including children) with limited physical, sensory or mental capabilities or people without adequate experience and/or understanding, unless they are supervised by someone responsible for their safety or are instructed by them on how to use the device.
- ⊙ Children must not play with the device.
- ⊙ Keep the device out of the reach of children.

DANGER from battery

- ⊙ This device must not be thrown into fire. **DANGER OF EXPLOSION!**
- ⊙ The device must not be covered whilst charging the battery.
- ⊙ The device must only be charged in a dry environment.
- ⊙ The device is provided with a lithium polymer battery.
 - The battery cannot be removed.
 - This device must not be opened.
 - Completely dispose of the device.
- ⊙ Do not expose the device to direct sunshine or heat. The ambient temperature should not be lower than 10 °C or higher than 40 °C.
- ⊙ The battery may only be charged with the original accessory (USB charger cable).

WARNING! Risk of material damage

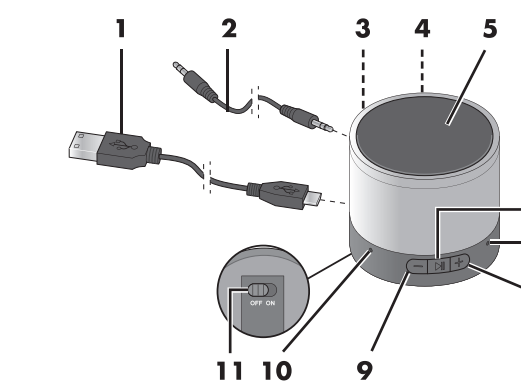
- ⊙ If you notice any irregularities (e.g. unusual noises, strange smells or smoke developing) turn the device off immediately. Do not use the device any longer.
- ⊙ If the device is moved from a cold location to a warm location, condensate may form in the device. Leave the device switched off for a few hours.

- ⊙ Protect the device against damage, e.g. from:
 - drips and splashes of water
 - heat, direct sun radiation and open flames (e.g. candles)
 - impacts and similar violent effects
- ⊙ Protect the cable against damage, e.g. from:
 - sharp edges
 - hot places
 - clamping or crushing
- ⊙ Do not use any astringent or abrasive cleaning agents.
- ⊙ To avoid any risk, do not make modifications to the device. Repairs must be carried out by a specialist workshop or the Service Centre.

Items supplied

- 1 Bluetooth speaker
- 1 USB charger cable (Type A on Micro USB) **1**
- 1 3.5 mm stereo jack cable **2**
- 1 Operating instructions

Overview



- 1** USB charger cable for Micro USB/Type A
- 2** 3.5 mm stereo jack cable
- 3** Micro USB port
- 4** Jack socket
- 5** Speaker
- 6** Button
- 7** LED
- 8** Button
- 9** Button
- 10** Microphone
- 11** OFF/ON switch

Before using for the first time

- Remove all packing material.
- Remove the protective film on the underside of the device.
- Check that the device is undamaged.

Charging

DANGER from battery!

- ⊙ The device must not be covered whilst charging the battery.
- ⊙ The device must only be charged in a dry environment.

NOTES:

- Charge the battery fully before using the device.
- With an accumulator capacity of less than approx. 10%, LED **7** flashes in red.
- The charging time of an empty battery is approx. 4-5 hours. It is possible to operate the device during the charging process, however, this extends the charging time.

1. Plug the Micro USB connector of the USB charger cable **1** into the Micro USB port **3** of the device.
2. Connect the USB-A connector of the USB charger cable **1** e.g. to the USB port of a PC or to a USB power unit (not included in scope of supply). The LED **7** is lit red and turns off when the battery is fully charged.

Operation

Functions of the buttons

NOTE: it is possible, that not all of the functions will be supported by all mobile phones.

Button	Function
6	while playing: <ul style="list-style-type: none"> • short press: Pause / Play during a call: <ul style="list-style-type: none"> • short press: pick up / end call
8	<ul style="list-style-type: none"> • short press: next song • keep pressed: increase volume (acoustic signal sounds at maximum volume)
9	<ul style="list-style-type: none"> • short press: beginning of the song • short press 2x: previous song • keep pressed: decrease volume (acoustic signal sounds at minimum volume)

LED indicators

LED indicator	Function
LED is lit red	The battery is being charged
LED flashes red	The battery must be charged
LED is lit green	Connector of the 3.5 mm stereo jack cable 2 is plugged into the jack socket 4
LED flashes red/blue	<ul style="list-style-type: none"> • Device attempts to make a connection to the most recently paired device • Device sends device identification
LED flashes blue	Bluetooth connection is established

Establish a Bluetooth connection

NOTES:

- The identification of the device is "SBL 4.1 A1".
- After turning it on, the device automatically tries to reconnect to the last paired device or to establish a new connection.
- Please observe that the establishment process of the connection may vary slightly depending on the device and the software used.
- The device switches off if no Bluetooth connection can be established within 10 minutes.
- If the device has switched off automatically, first switch it off by means of the switch **OFF/ON 11** before being able to switch it back on again.
- With moderate volume settings, the device may be used for a period of approx. 10 hours while the Bluetooth connection is established.