

Appendix B _ Radiated Test Data

FIELD STRENGTH OF SPURIOUS EMISSIONS

Note:

All antennas have been tested for radiated spurious emission, But the report only shows the worst data of the Avior antenna1.

Radiated emission below 30MHz

The amplitude of spurious emissions from 9kHz to 30MHz which are attenuated more than 20 dB below the permissible value not need be reported.

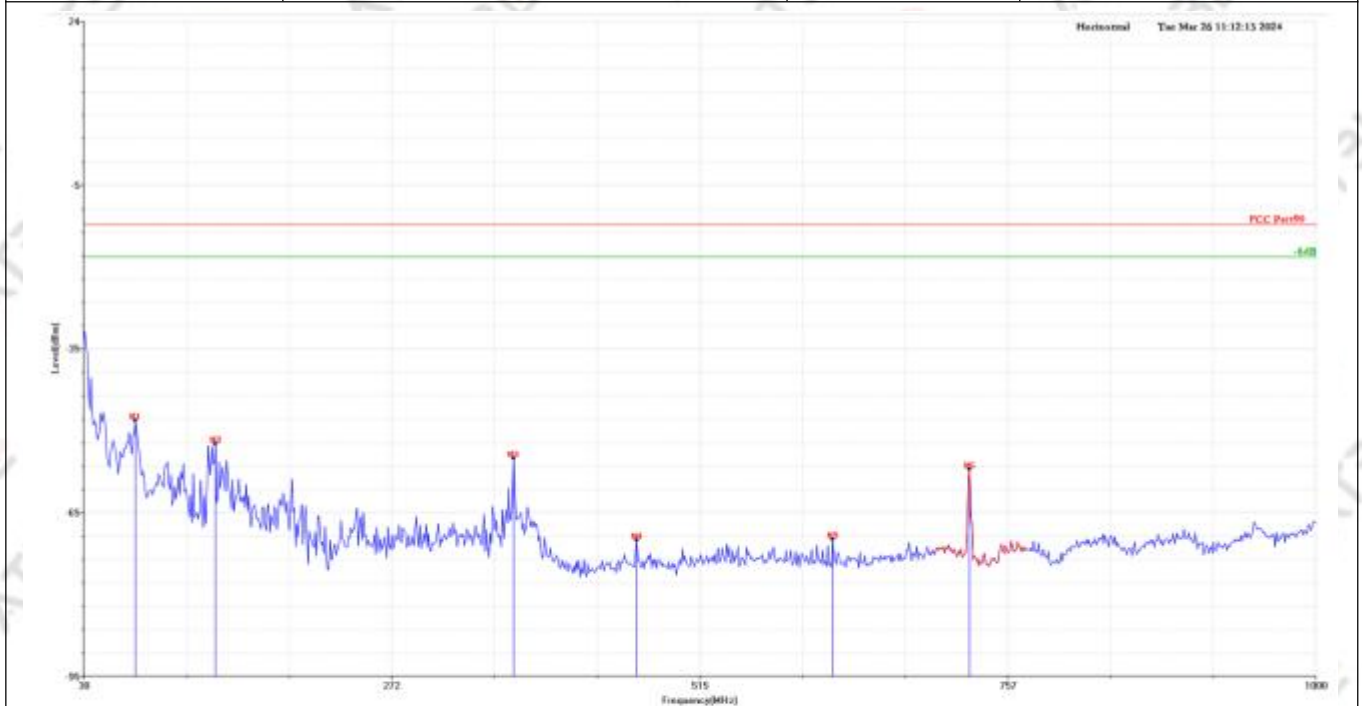
Radiated emission below 1000MHz and Radiated emission Below 1GHz

Test condition

Temperature	25.2°C	Relative Humidity	51%
Pressure	960mbar	Test Voltage	DC56V

Test result

Test Mode	Dense reader mode for ISOC FM2 640	Test Channel	Low Channel
Frequency range	30MHz-1000MHz	Antenna	Horizontal

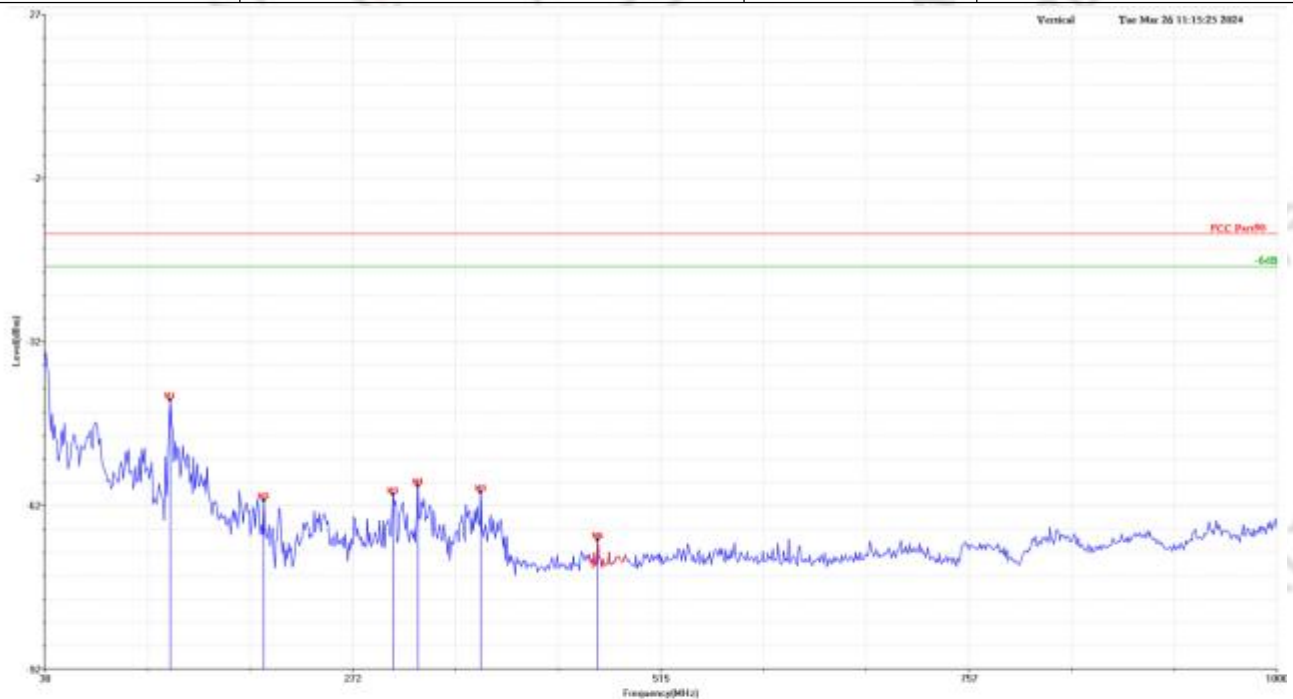


Test Summary Result

Frequency (MHz)	Read_Level (dBm)	Factor (dB)	Level (dBm)	Limit (dBm)	Margin (dB)	Table(o)	Pol/Phase
*70.74	-35.74	-13.20	-48.94	-13.00	-35.94	0.00	Horizontal
133.79	-39.53	-13.67	-53.20	-13.00	-40.20	0.00	Horizontal
368.53	-41.03	-14.82	-55.85	-13.00	-42.85	0.00	Horizontal
465.53	-58.32	-12.55	-70.87	-13.00	-57.87	0.00	Horizontal
619.76	-60.69	-10.01	-70.70	-13.00	-57.70	0.00	Horizontal
727.43	-49.35	-8.52	-57.87	-13.00	-44.87	0.00	Horizontal

Note : The test worst case was marked with the " * " in front of frequency.

Test Mode	Dense reader mode for ISOC FM2 640	Test Channel	Low Channel
Frequency range	30MHz-1000MHz	Antenna	Vertical



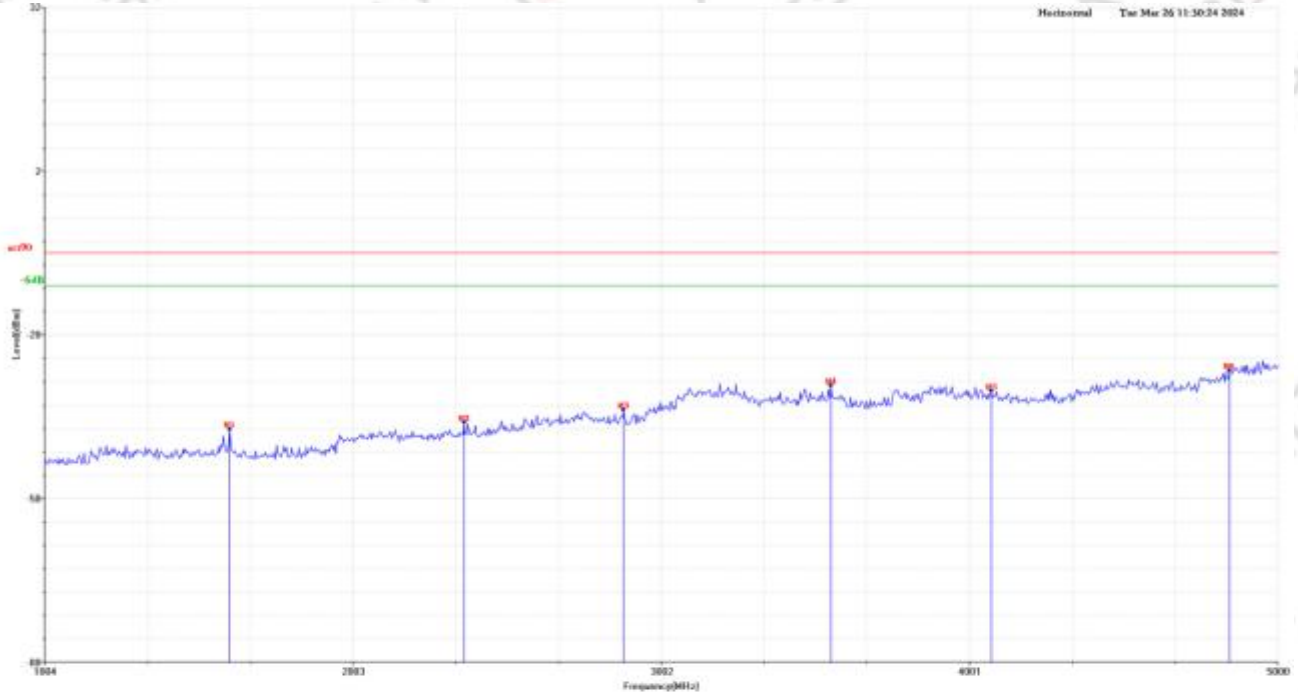
Test Summary Result

Frequency (MHz)	Read_Level (dBm)	Factor (dB)	Level (dBm)	Limit (dBm)	Margin (dB)	Table(o)	Pol/Phase
*128.94	-35.26	-8.24	-43.50	-13.00	-30.50	0.00	Vertical
202.66	-44.06	-17.87	-61.93	-13.00	-48.93	0.00	Vertical
304.51	-46.19	-14.57	-60.76	-13.00	-47.76	0.00	Vertical
323.91	-45.31	-13.93	-59.24	-13.00	-46.24	0.00	Vertical
373.38	-47.44	-12.95	-60.39	-13.00	-47.39	0.00	Vertical
465.53	-58.69	-10.43	-69.12	-13.00	-56.12	0.00	Vertical

Note : The test worst case was marked with the " * " in front of frequency.

Radiated emission below 1000MHz and Radiated emission Above 1GHz

Test Mode	Dense reader mode for ISOC FM2 640	Test Channel	Low Channel
Frequency range	1GHZ-5GHz	Antenna	Horizontal

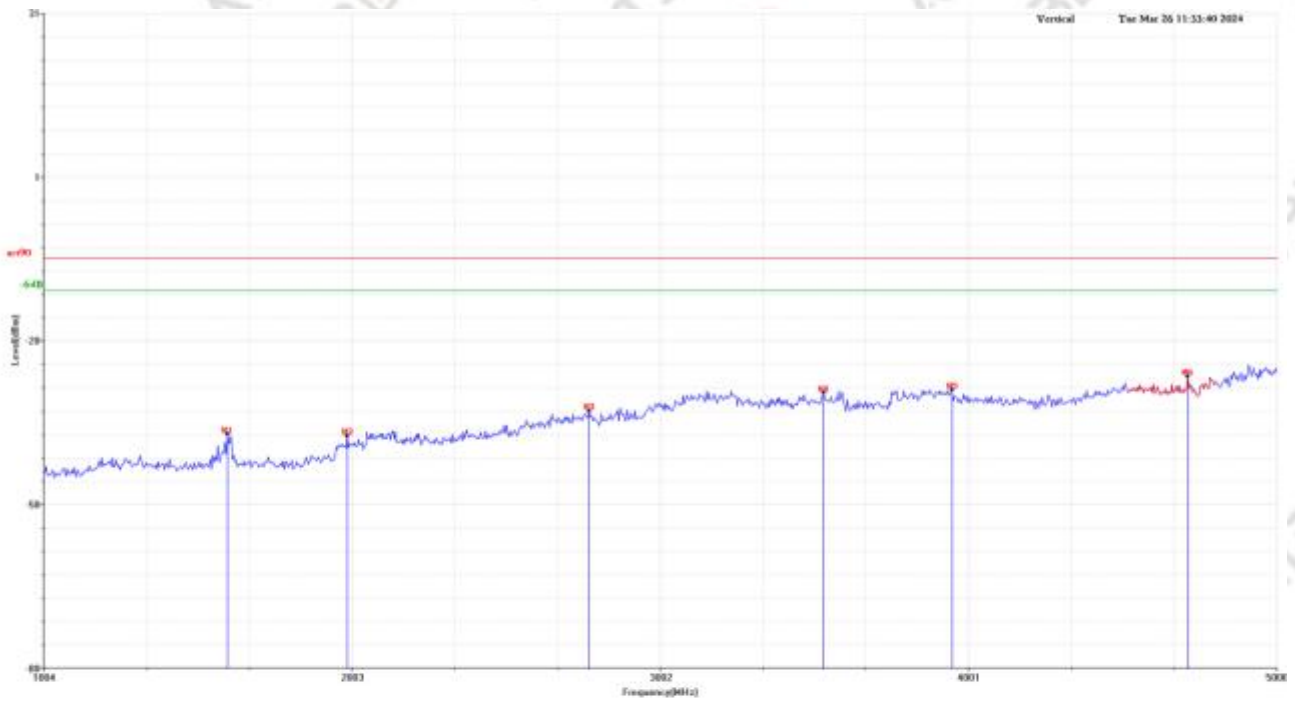


Test Summary Result

Frequency (MHz)	Read_Level (dBm)	Factor (dB)	Level (dBm)	Limit (dBm)	Margin (dB)	Table(o)	Pol/Phase
1604.00	-45.89	0.56	-45.33	-13.00	-32.33	0.00	Horizontal
2364.00	-47.37	3.29	-44.08	-13.00	-31.08	0.00	Horizontal
2880.00	-47.00	5.28	-41.72	-13.00	-28.72	0.00	Horizontal
3552.00	-46.78	9.47	-37.31	-13.00	-24.31	0.00	Horizontal
4072.00	-49.30	10.99	-38.31	-13.00	-25.31	0.00	Horizontal
*4844.00	-47.91	13.32	-34.59	-13.00	-21.59	0.00	Horizontal

Note : The test worst case was marked with the "*" in front of frequency.

Test Mode	Dense reader mode for ISOC FM2 640	Test Channel	Low Channel
Frequency range	1GHZ-5GHz	Antenna	Vertical

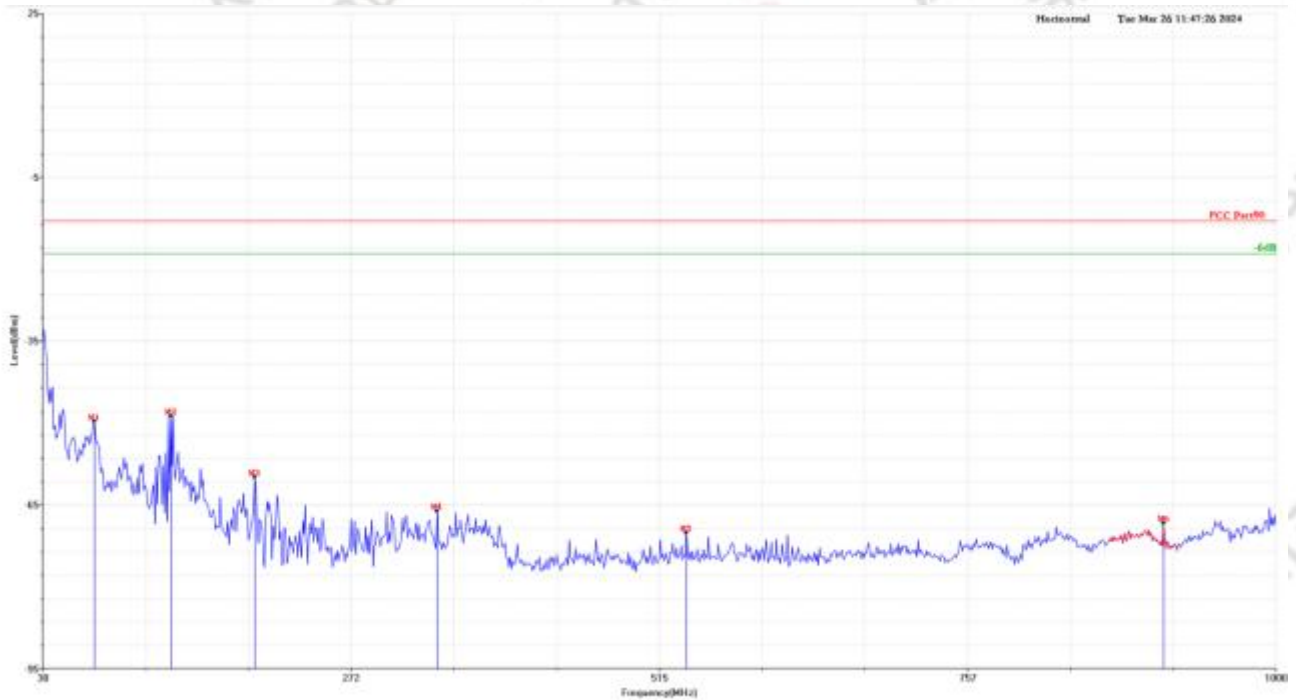


Test Summary Result

Frequency (MHz)	Read_Level (dBm)	Factor (dB)	Level (dBm)	Limit (dBm)	Margin (dB)	Table(o)	Pol/Phase
1600.00	-44.86	-0.44	-45.30	-13.00	-32.30	0.00	Vertical
1988.00	-47.97	2.31	-45.66	-13.00	-32.66	0.00	Vertical
2772.00	-47.46	6.36	-41.10	-13.00	-28.10	0.00	Vertical
3532.00	-47.83	10.09	-37.74	-13.00	-24.74	0.00	Vertical
3948.00	-50.22	13.02	-37.20	-13.00	-24.20	0.00	Vertical
*4712.00	-47.21	12.47	-34.74	-13.00	-21.74	0.00	Vertical

Note : The test worse case was marked with the " * " in front of frequency.

Test Mode	Dense reader mode for ISOC FM2 640	Test Channel	High Channel
Frequency range	30MHz-1000MHz	Antenna	Horizontal

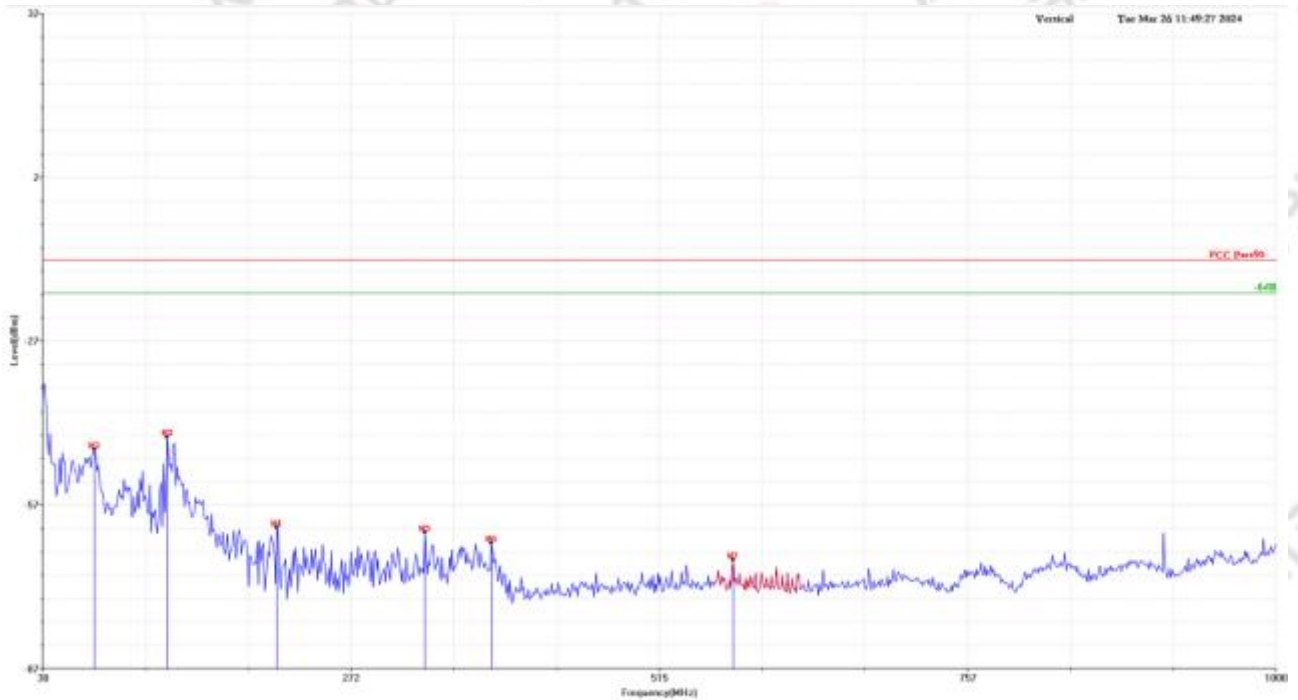


Test Summary Result

Frequency (MHz)	Read_Level (dBm)	Factor (dB)	Level (dBm)	Limit (dBm)	Margin (dB)	Table(o)	Pol/Phase
70.74	-36.53	-13.20	-49.73	-13.00	-36.73	0.00	Horizontal
*130.88	-35.33	-13.41	-48.74	-13.00	-35.74	0.00	Horizontal
196.84	-40.60	-19.34	-59.94	-13.00	-46.94	0.00	Horizontal
340.40	-50.36	-15.83	-66.19	-13.00	-53.19	0.00	Horizontal
536.34	-59.32	-10.85	-70.17	-13.00	-57.17	0.00	Horizontal
911.73	-63.18	-5.20	-68.38	-13.00	-55.38	0.00	Horizontal

Note : The test worst case was marked with the " * " in front of frequency.

Test Mode	Dense reader mode for ISOC FM2 640	Test Channel	High Channel
Frequency range	30MHz-1000MHz	Antenna	Vertical

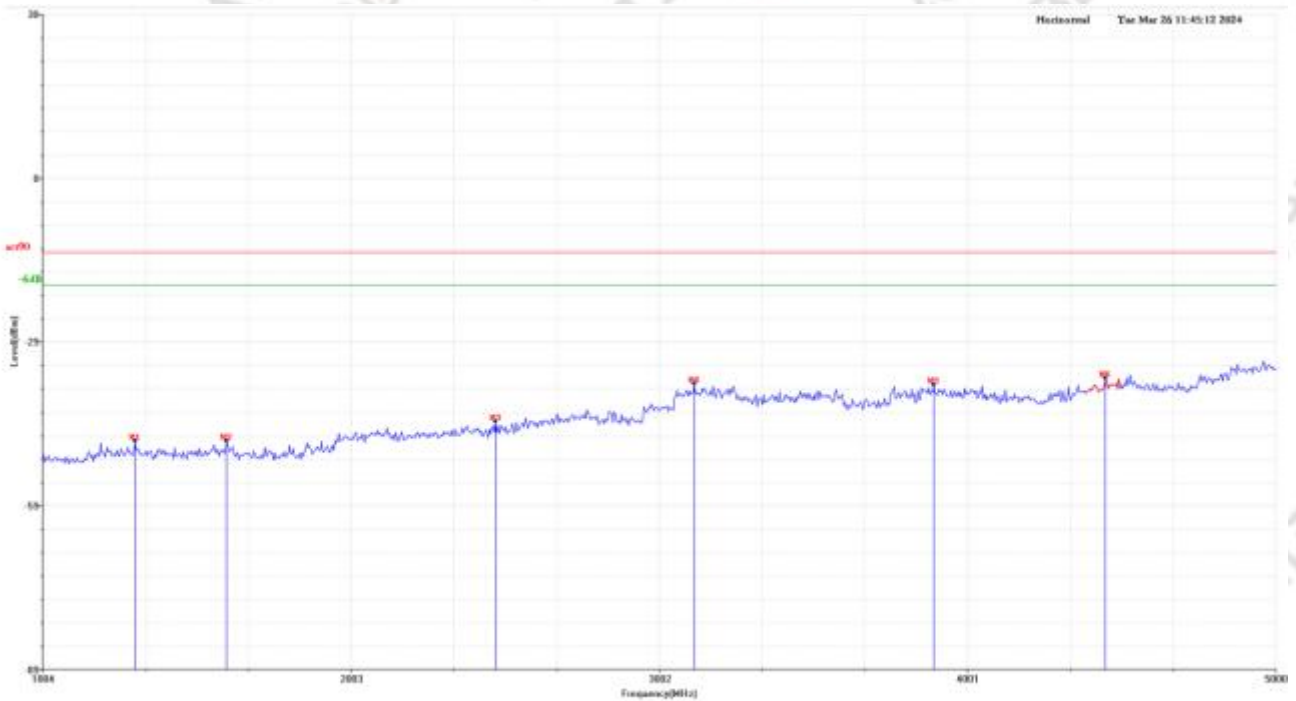


Test Summary Result

Frequency (MHz)	Read_Level (dBm)	Factor (dB)	Level (dBm)	Limit (dBm)	Margin (dB)	Table(o)	Pol/Phase
70.74	-37.77	-9.90	-47.67	-13.00	-34.67	0.00	Vertical
*127.97	-36.90	-8.52	-45.42	-13.00	-32.42	0.00	Vertical
214.30	-43.79	-18.22	-62.01	-13.00	-49.01	0.00	Vertical
330.70	-48.91	-13.93	-62.84	-13.00	-49.84	0.00	Vertical
383.08	-51.87	-12.95	-64.82	-13.00	-51.82	0.00	Vertical
573.20	-59.54	-8.31	-67.85	-13.00	-54.85	0.00	Vertical

Note : The test worse case was marked with the " * " in front of frequency.

Test Mode	Dense reader mode for ISOC FM2 640	Test Channel	High Channel
Frequency range	1GHZ-5GHz	Antenna	Horizontal

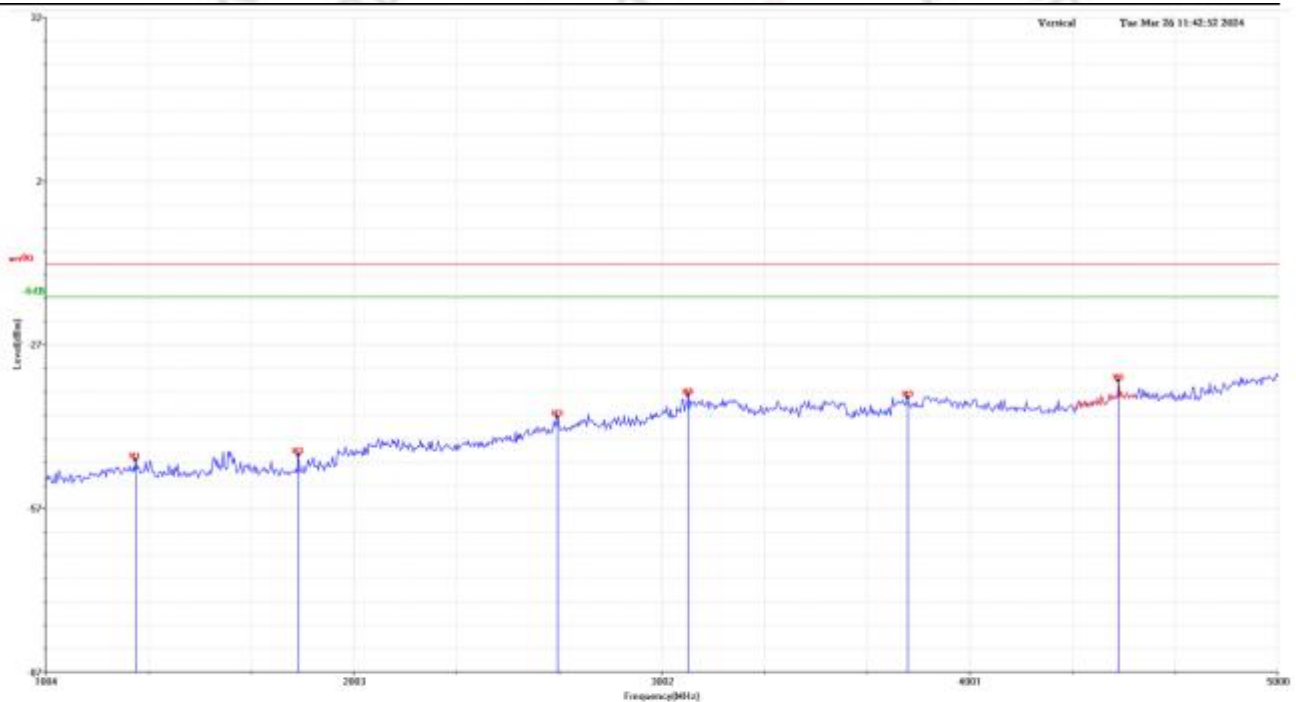


Test Summary Result

Frequency (MHz)	Read_Level (dBm)	Factor (dB)	Level (dBm)	Limit (dBm)	Margin (dB)	Table(o)	Pol/Phase
1304.00	-48.74	1.22	-47.52	-13.00	-34.52	0.00	Horizontal
1600.00	-48.08	0.56	-47.52	-13.00	-34.52	0.00	Horizontal
2472.00	-47.53	3.58	-43.95	-13.00	-30.95	0.00	Horizontal
3116.00	-46.47	9.41	-37.06	-13.00	-24.06	0.00	Horizontal
3892.00	-49.59	12.36	-37.23	-13.00	-24.23	0.00	Horizontal
*4448.00	-48.27	12.25	-36.02	-13.00	-23.02	0.00	Horizontal

Note : The test worst case was marked with the " * " in front of frequency.

Test Mode	Dense reader mode for ISOC FM2 640	Test Channel	High Channel
Frequency range	1GHZ-5GHz	Antenna	Vertical

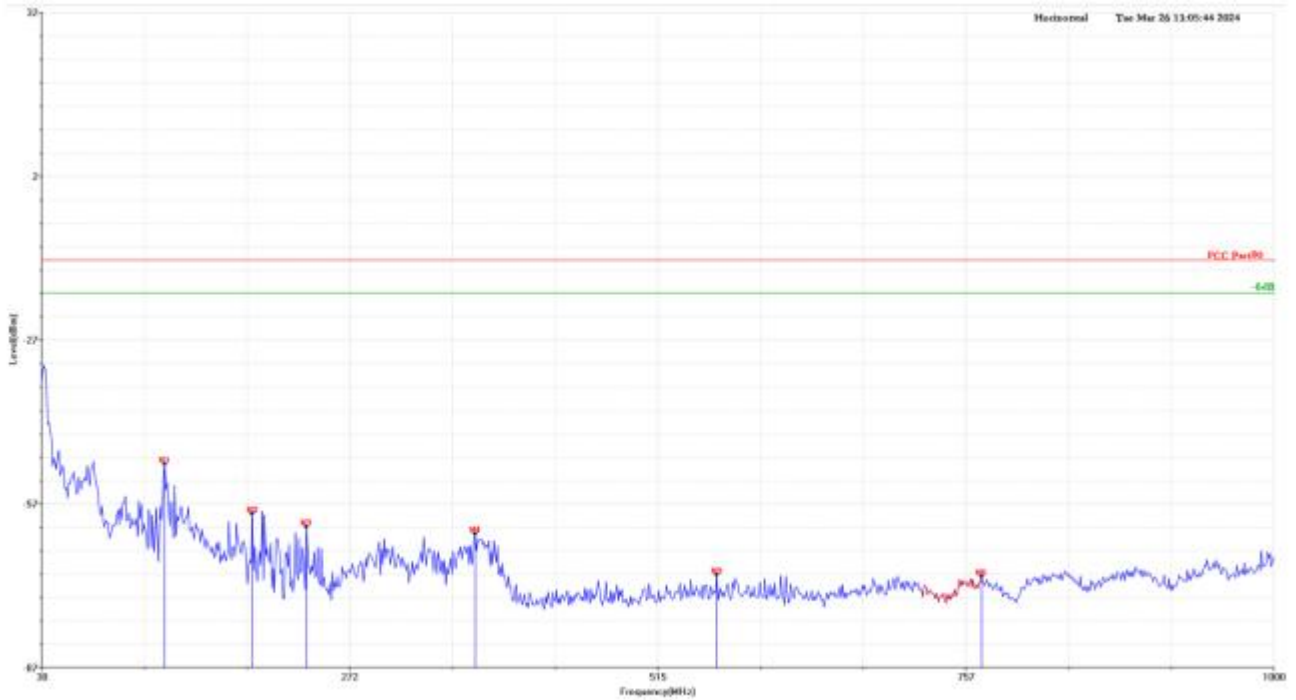


Test Summary Result

Frequency (MHz)	Read_Level (dBm)	Factor (dB)	Level (dBm)	Limit (dBm)	Margin (dB)	Table(o)	Pol/Phase
1296.00	-49.21	0.27	-48.94	-13.00	-35.94	0.00	Vertical
1824.00	-47.41	-0.63	-48.04	-13.00	-35.04	0.00	Vertical
2664.00	-46.78	5.69	-41.09	-13.00	-28.09	0.00	Vertical
3088.00	-46.60	9.54	-37.06	-13.00	-24.06	0.00	Vertical
3800.00	-49.41	11.90	-37.51	-13.00	-24.51	0.00	Vertical
*4484.00	-46.93	12.51	-34.42	-13.00	-21.42	0.00	Vertical

Note : The test worse case was marked with the " * " in front of frequency.

Test Mode	Single Reader mode ISOC FM0 640	Test Channel	Low Channel
Frequency range	30MHz-1000MHz	Antenna	Horizontal

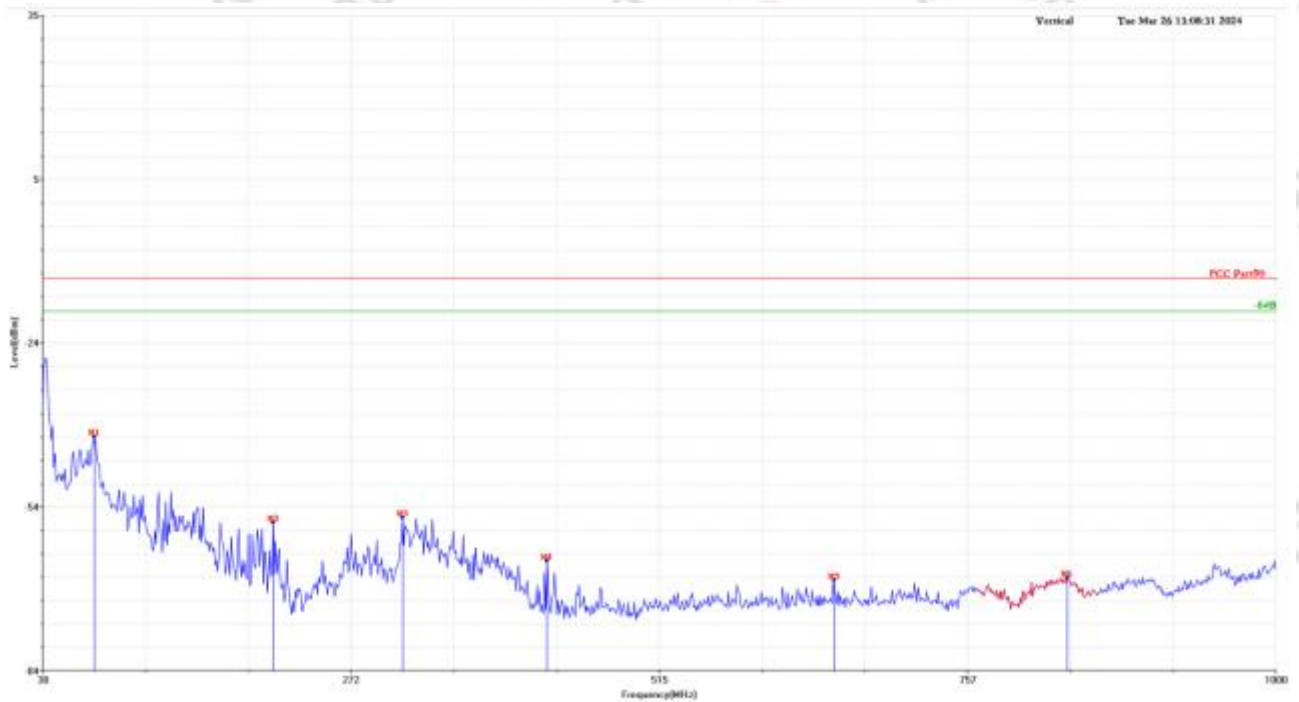


Test Summary Result

Frequency (MHz)	Read_Level (dBm)	Factor (dB)	Level (dBm)	Limit (dBm)	Margin (dB)	Table(o)	Pol/Phase
*127.00	-36.53	-13.83	-50.36	-13.00	-37.36	0.00	Horizontal
195.87	-40.51	-18.92	-59.43	-13.00	-46.43	0.00	Horizontal
238.55	-44.80	-17.04	-61.84	-13.00	-48.84	0.00	Horizontal
371.44	-48.32	-14.82	-63.14	-13.00	-50.14	0.00	Horizontal
561.56	-60.34	-10.27	-70.61	-13.00	-57.61	0.00	Horizontal
770.11	-63.92	-7.02	-70.94	-13.00	-57.94	0.00	Horizontal

Note : The test worse case was marked with the " *" in front of frequency.

Test Mode	Single Reader mode ISOC FM0 640	Test Channel	Low Channel
Frequency range	30MHz-1000MHz	Antenna	Vertical

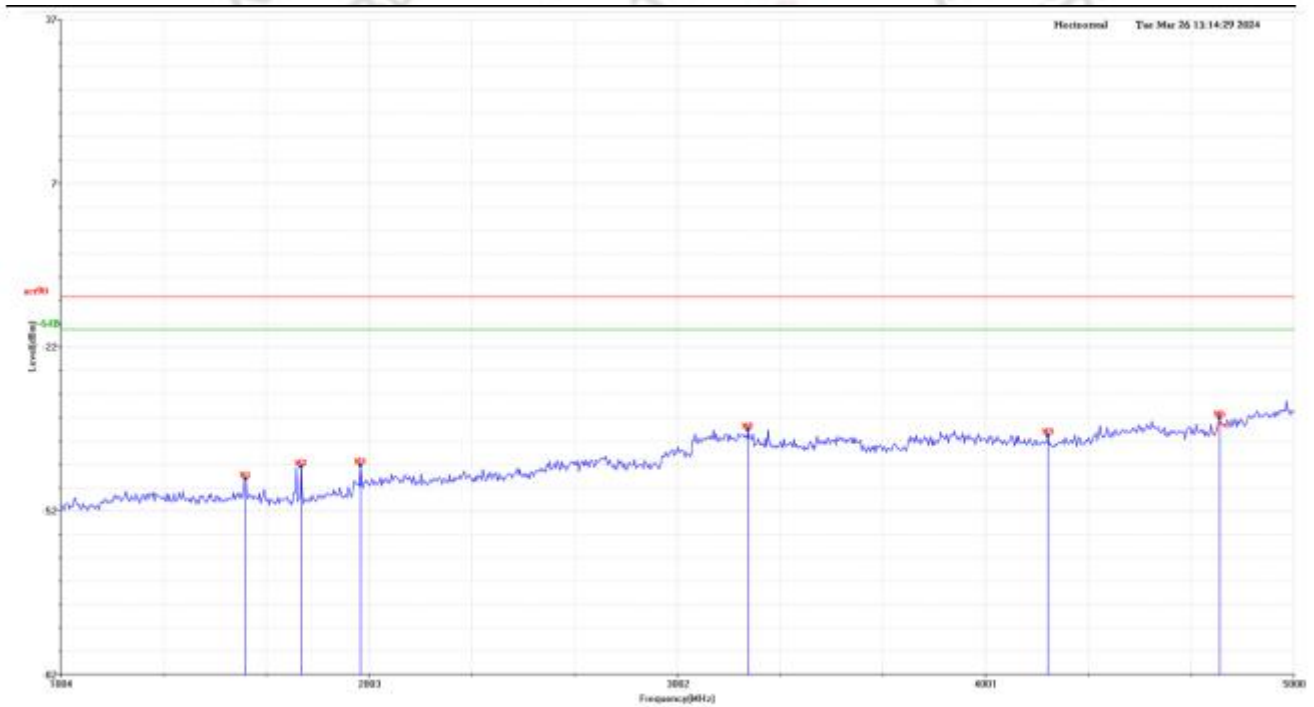


Test Summary Result

Frequency (MHz)	Read_Level (dBm)	Factor (dB)	Level (dBm)	Limit (dBm)	Margin (dB)	Table(o)	Pol/Phase
*70.74	-32.08	-9.90	-41.98	-13.00	-28.98	0.00	Vertical
211.39	-39.47	-18.22	-57.69	-13.00	-44.69	0.00	Vertical
313.24	-42.26	-14.57	-56.83	-13.00	-43.83	0.00	Vertical
426.73	-53.06	-11.68	-64.74	-13.00	-51.74	0.00	Vertical
652.74	-60.75	-7.50	-68.25	-13.00	-55.25	0.00	Vertical
836.07	-64.12	-3.74	-67.86	-13.00	-54.86	0.00	Vertical

Note : The test worse case was marked with the " * " in front of frequency.

Test Mode	Single Reader mode ISOC FM0 640	Test Channel	Low Channel
Frequency range	1GHZ-5GHz	Antenna	Horizontal

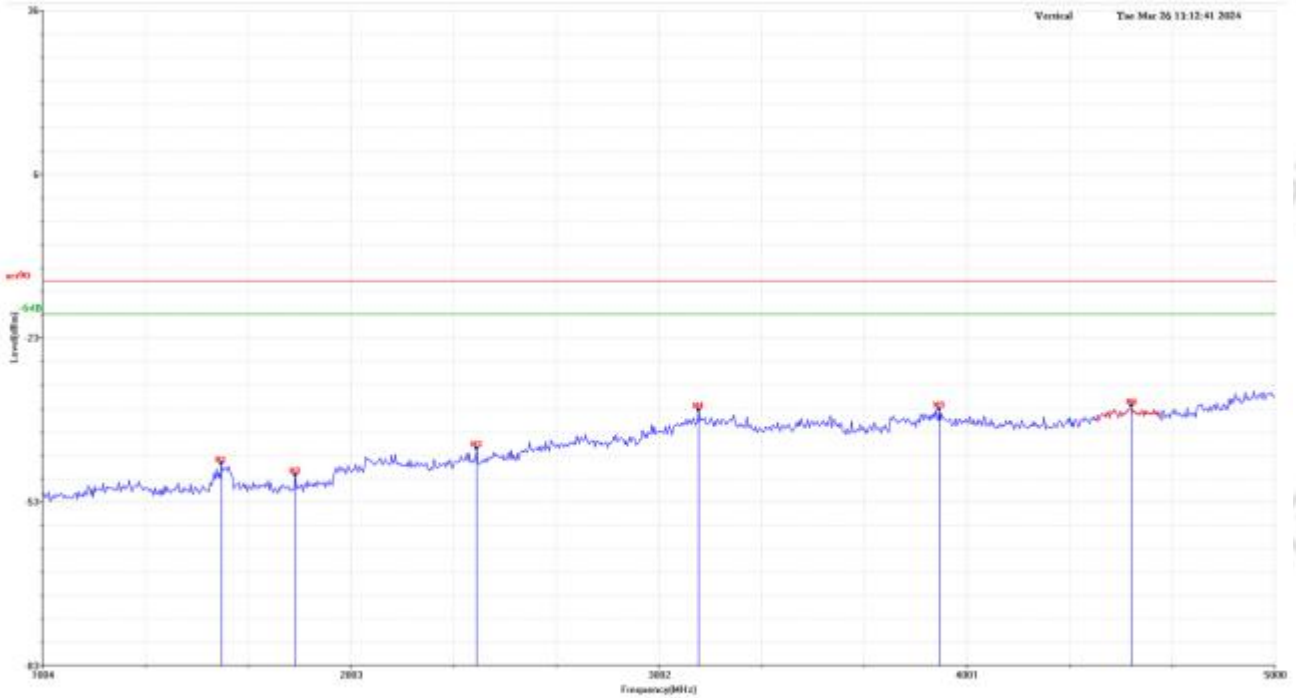


Test Summary Result

Frequency (MHz)	Read_Level (dBm)	Factor (dB)	Level (dBm)	Limit (dBm)	Margin (dB)	Table(o)	Pol/Phase
1604.00	-46.96	0.56	-46.40	-13.00	-33.40	0.00	Horizontal
1784.00	-44.49	0.33	-44.16	-13.00	-31.16	0.00	Horizontal
1976.00	-46.60	2.65	-43.95	-13.00	-30.95	0.00	Horizontal
3232.00	-47.20	9.81	-37.39	-13.00	-24.39	0.00	Horizontal
4204.00	-49.32	10.84	-38.48	-13.00	-25.48	0.00	Horizontal
*4760.00	-48.51	13.32	-35.19	-13.00	-22.19	0.00	Horizontal

Note : The test worse case was marked with the " * " in front of frequency.

Test Mode	Single Reader mode ISOC FM0 640	Test Channel	Low Channel
Frequency range	1GHZ-5GHz	Antenna	Vertical

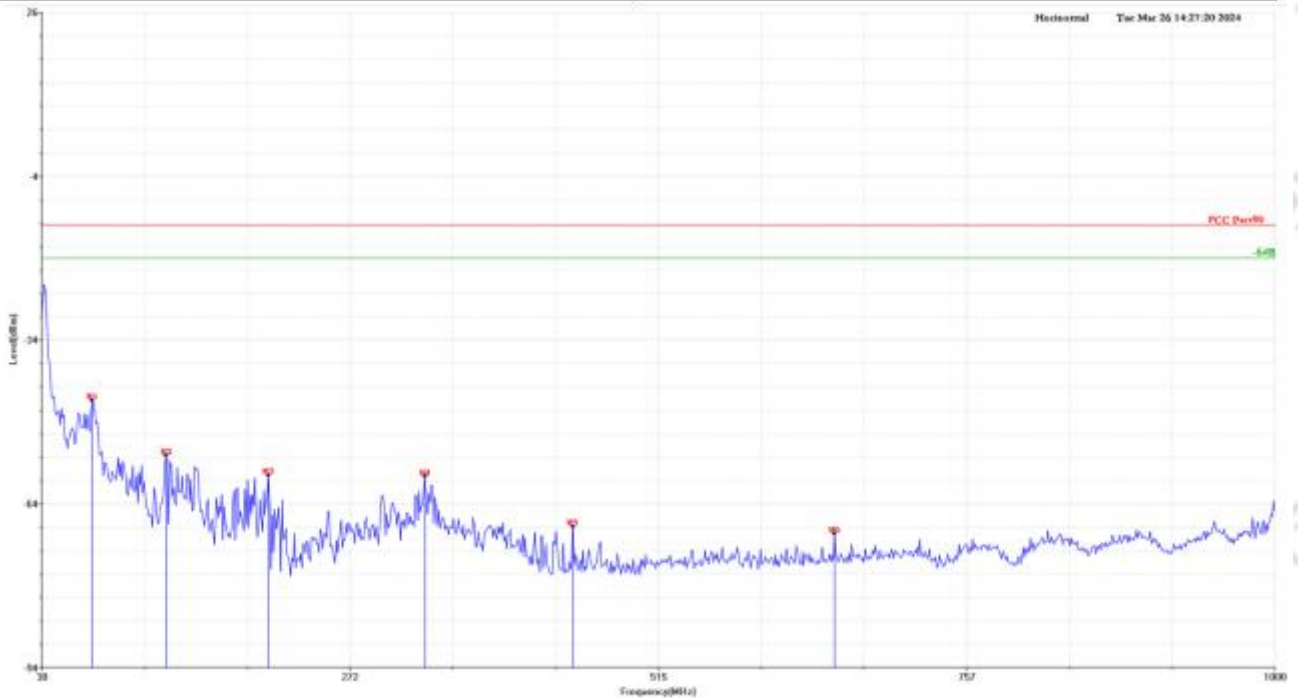


Test Summary Result

Frequency (MHz)	Read_Level (dBm)	Factor (dB)	Level (dBm)	Limit (dBm)	Margin (dB)	Table(o)	Pol/Phase
1584.00	-45.92	-0.44	-46.36	-13.00	-33.36	0.00	Vertical
1824.00	-47.86	-0.63	-48.49	-13.00	-35.49	0.00	Vertical
2412.00	-46.94	3.34	-43.60	-13.00	-30.60	0.00	Vertical
3132.00	-46.14	9.54	-36.60	-13.00	-23.60	0.00	Vertical
3912.00	-49.48	13.02	-36.46	-13.00	-23.46	0.00	Vertical
*4536.00	-48.30	12.51	-35.79	-13.00	-22.79	0.00	Vertical

Note : The test worse case was marked with the " * " in front of frequency.

Test Mode	Single Reader mode ISOC FM0 640	Test Channel	High Channel
Frequency range	30MHz-1000MHz	Antenna	Horizontal

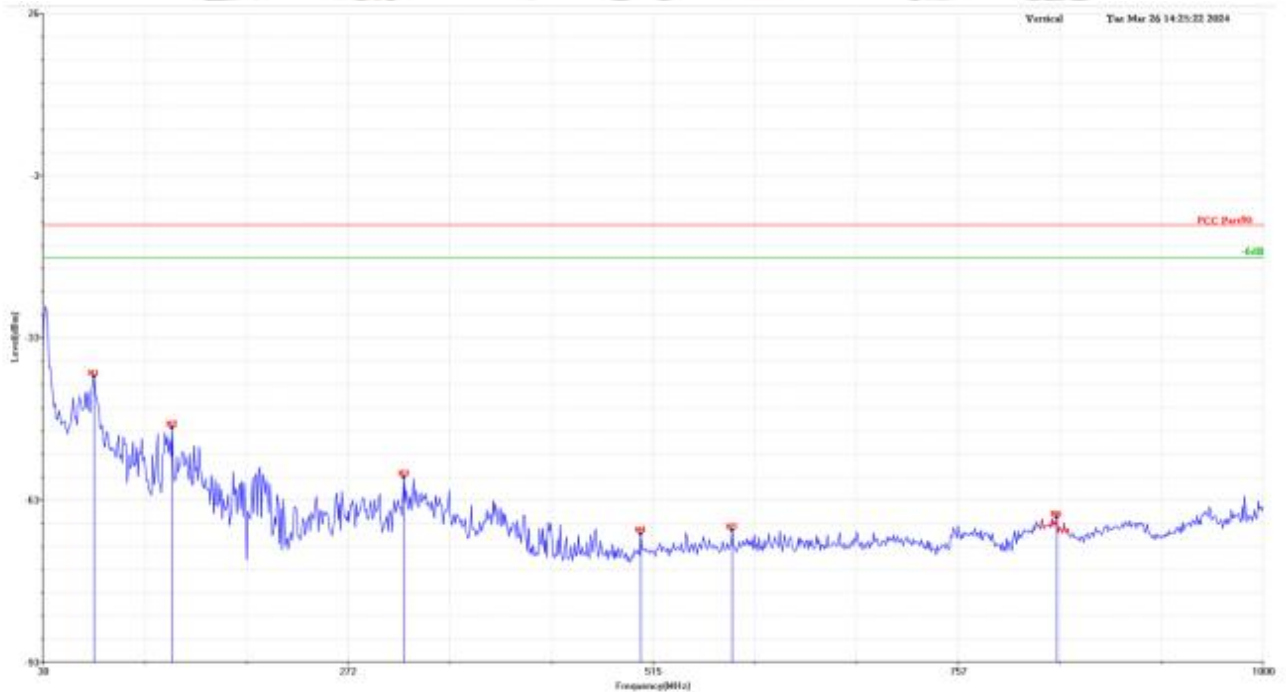


Test Summary Result

Frequency (MHz)	Read_Level (dBm)	Factor (dB)	Level (dBm)	Limit (dBm)	Margin (dB)	Table(o)	Pol/Phase
*69.77	-32.07	-13.01	-45.08	-13.00	-32.08	0.00	Horizontal
127.97	-41.35	-13.83	-55.18	-13.00	-42.18	0.00	Horizontal
208.48	-38.89	-19.94	-58.83	-13.00	-45.83	0.00	Horizontal
331.67	-43.18	-15.83	-59.01	-13.00	-46.01	0.00	Horizontal
448.07	-54.65	-13.56	-68.21	-13.00	-55.21	0.00	Horizontal
653.71	-60.33	-9.15	-69.48	-13.00	-56.48	0.00	Horizontal

Note : The test worst case was marked with the " * " in front of frequency.

Test Mode	Single Reader mode ISOC FM0 640	Test Channel	High Channel
Frequency range	30MHz-1000MHz	Antenna	Vertical

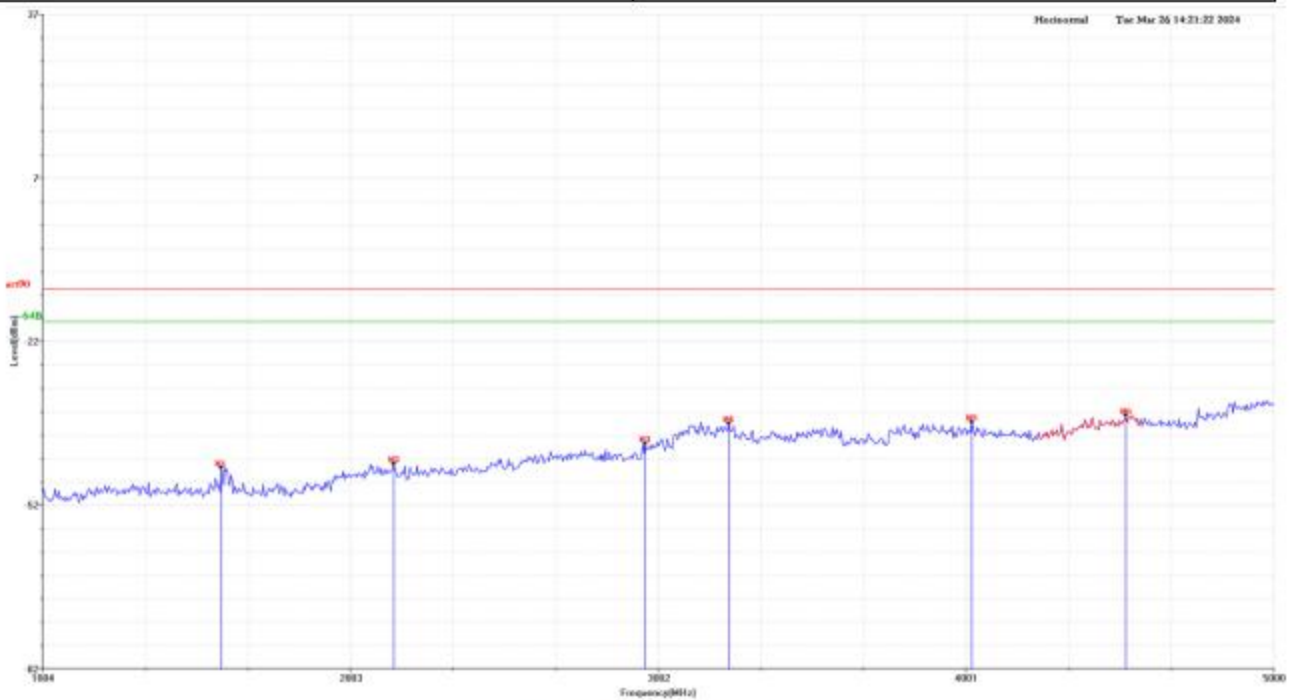


Test Summary Result

Frequency (MHz)	Read_Level (dBm)	Factor (dB)	Level (dBm)	Limit (dBm)	Margin (dB)	Table(o)	Pol/Phase
*70.74	-31.13	-9.90	-41.03	-13.00	-28.03	0.00	Vertical
132.82	-42.24	-8.24	-50.48	-13.00	-37.48	0.00	Vertical
317.12	-45.09	-14.57	-59.66	-13.00	-46.66	0.00	Vertical
505.30	-61.21	-8.93	-70.14	-13.00	-57.14	0.00	Vertical
578.05	-61.11	-8.31	-69.42	-13.00	-56.42	0.00	Vertical
836.07	-63.34	-3.74	-67.08	-13.00	-54.08	0.00	Vertical

Note : The test worse case was marked with the " * " in front of frequency.

Test Mode	Single Reader mode ISOC FM0 640	Test Channel	High Channel
Frequency range	1GHZ-5GHz	Antenna	Horizontal

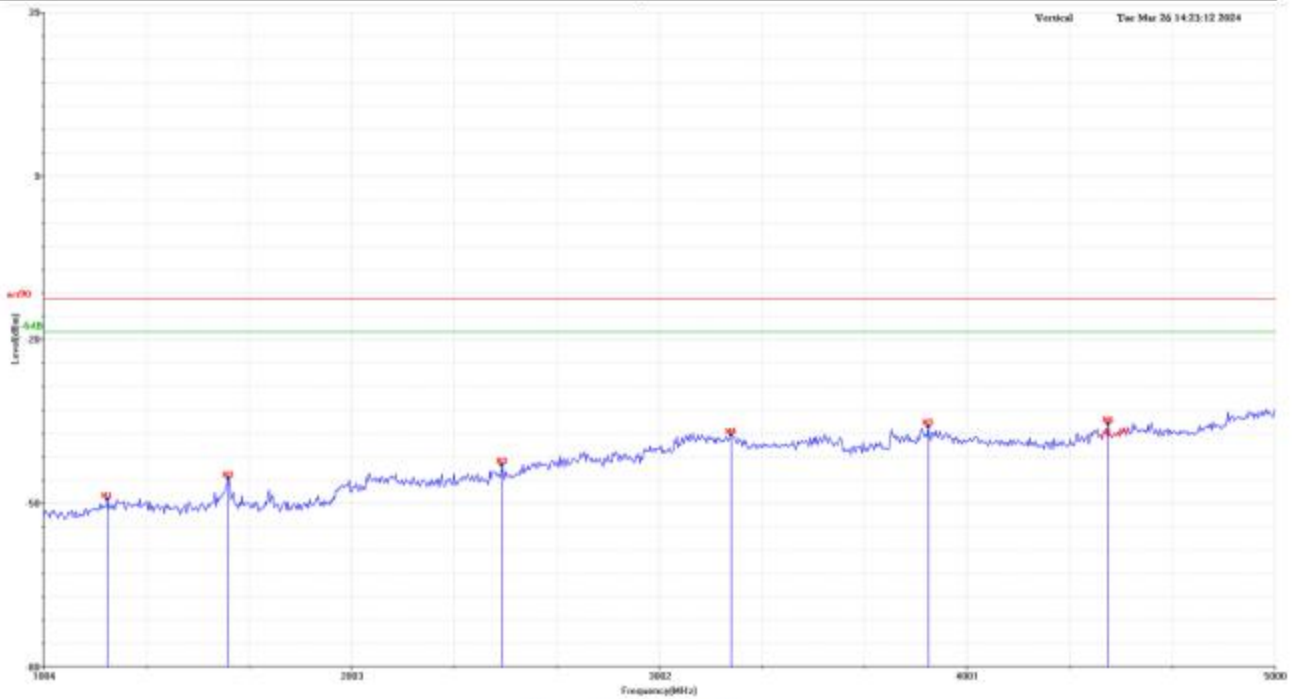


Test Summary Result

Frequency (MHz)	Read_Level (dBm)	Factor (dB)	Level (dBm)	Limit (dBm)	Margin (dB)	Table(o)	Pol/Phase
1584.00	-46.28	0.56	-45.72	-13.00	-32.72	0.00	Horizontal
2144.00	-48.23	3.19	-45.04	-13.00	-32.04	0.00	Horizontal
2960.00	-48.33	6.98	-41.35	-13.00	-28.35	0.00	Horizontal
3232.00	-47.49	9.81	-37.68	-13.00	-24.68	0.00	Horizontal
4020.00	-49.13	11.75	-37.38	-13.00	-24.38	0.00	Horizontal
*4520.00	-48.58	12.45	-36.13	-13.00	-23.13	0.00	Horizontal

Note : The test worse case was marked with the " * " in front of frequency.

Test Mode	Single Reader mode ISOC FM0 640	Test Channel	High Channel
Frequency range	1GHZ-5GHz	Antenna	Vertical

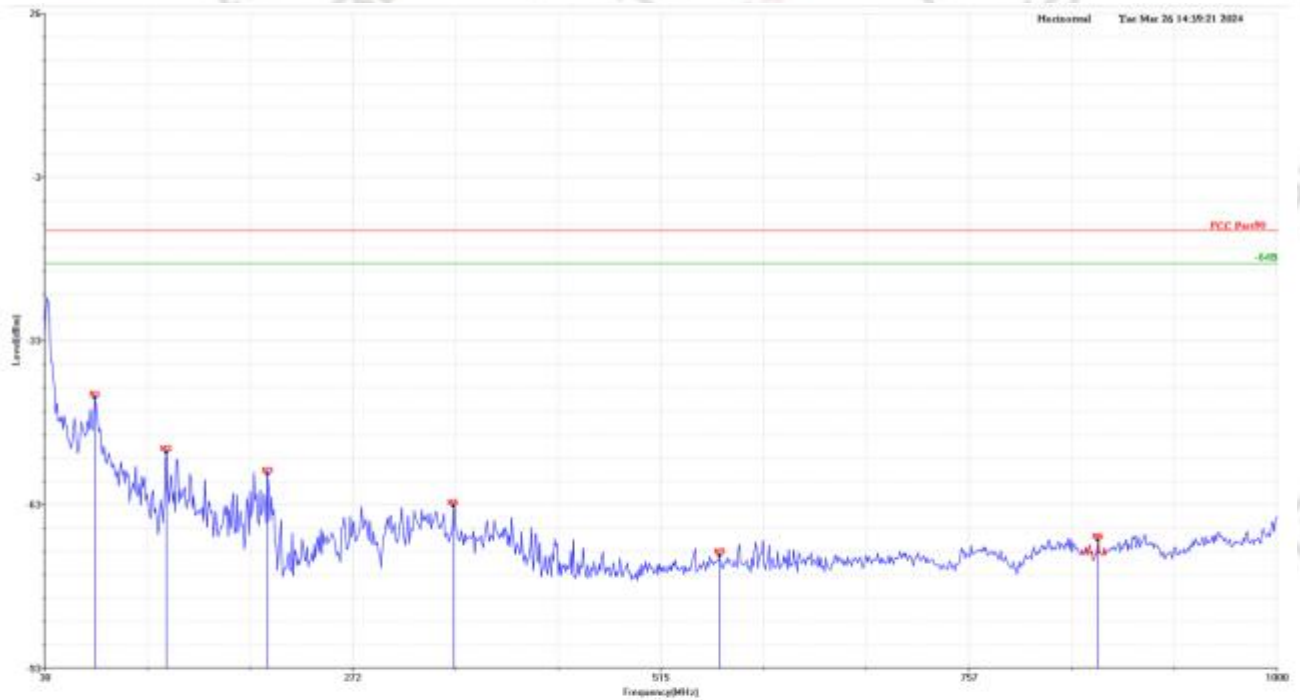


Test Summary Result

Frequency (MHz)	Read_Level (dBm)	Factor (dB)	Level (dBm)	Limit (dBm)	Margin (dB)	Table(o)	Pol/Phase
1212.00	-49.90	0.16	-49.74	-13.00	-36.74	0.00	Vertical
1604.00	-45.44	-0.44	-45.88	-13.00	-32.88	0.00	Vertical
2492.00	-47.30	3.85	-43.45	-13.00	-30.45	0.00	Vertical
3236.00	-47.81	9.91	-37.90	-13.00	-24.90	0.00	Vertical
3876.00	-49.39	13.02	-36.37	-13.00	-23.37	0.00	Vertical
*4460.00	-48.40	12.51	-35.89	-13.00	-22.89	0.00	Vertical

Note : The test worst case was marked with the " * " in front of frequency.

Test Mode	Low data rate ISOB-40k	Test Channel	Low Channel
Frequency range	30MHz-1000MHz	Antenna	Horizontal



Test Summary Result

Frequency (MHz)	Read_Level (dBm)	Factor (dB)	Level (dBm)	Limit (dBm)	Margin (dB)	Table(o)	Pol/Phase
*69.77	-30.69	-13.01	-43.70	-13.00	-30.70	0.00	Horizontal
126.03	-39.87	-13.83	-53.70	-13.00	-40.70	0.00	Horizontal
205.57	-38.14	-19.56	-57.70	-13.00	-44.70	0.00	Horizontal
352.04	-48.71	-14.82	-63.53	-13.00	-50.53	0.00	Horizontal
561.56	-62.35	-10.27	-72.62	-13.00	-59.62	0.00	Horizontal
859.35	-64.53	-5.29	-69.82	-13.00	-56.82	0.00	Horizontal

Note : The test worse case was marked with the "*" in front of frequency.

Test Mode	Low data rate ISOB-40k	Test Channel	Low Channel
Frequency range	30MHz-1000MHz	Antenna	Vertical

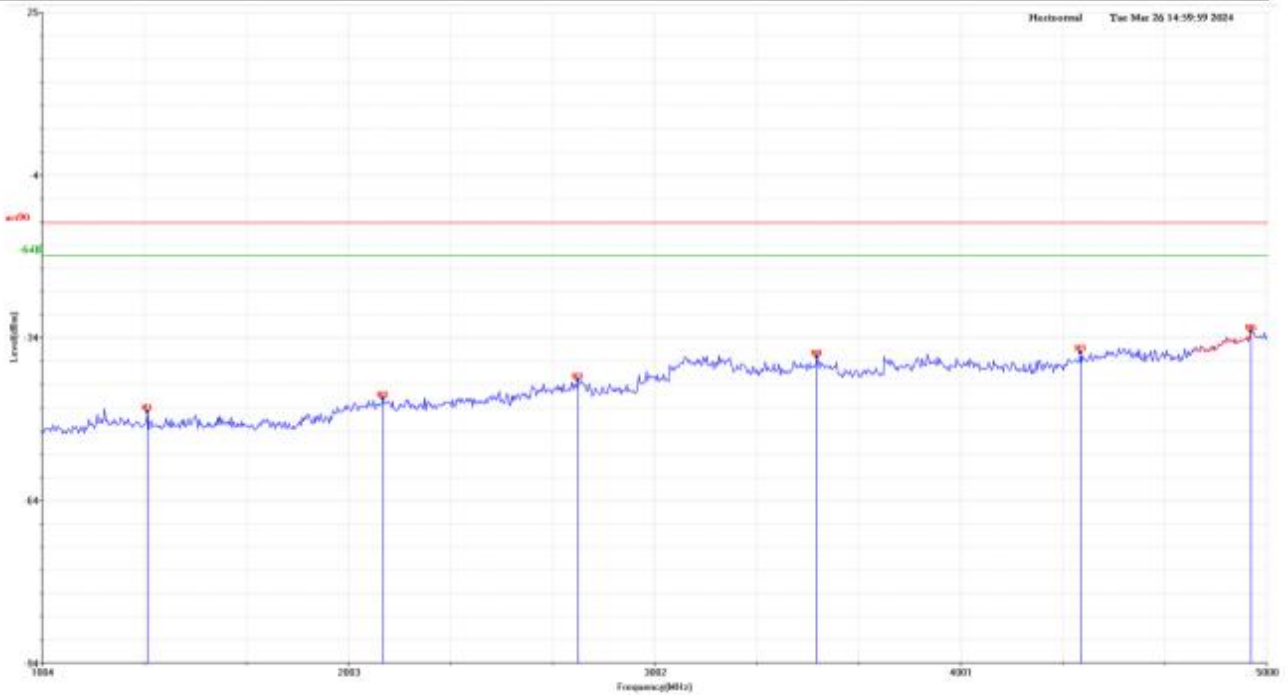


Test Summary Result

Frequency (MHz)	Read_Level (dBm)	Factor (dB)	Level (dBm)	Limit (dBm)	Margin (dB)	Table(o)	Pol/Phase
*70.74	-30.51	-9.90	-40.41	-13.00	-27.41	0.00	Vertical
132.82	-37.20	-8.24	-45.44	-13.00	-32.44	0.00	Vertical
321.97	-43.61	-14.57	-58.18	-13.00	-45.18	0.00	Vertical
419.94	-54.90	-11.68	-66.58	-13.00	-53.58	0.00	Vertical
655.65	-61.60	-7.50	-69.10	-13.00	-56.10	0.00	Vertical
832.19	-62.92	-3.74	-66.66	-13.00	-53.66	0.00	Vertical

Note : The test worse case was marked with the " *" in front of frequency.

Test Mode	Low data rate ISOB-40k	Test Channel	Low Channel
Frequency range	1GHZ-5GHz	Antenna	Horizontal

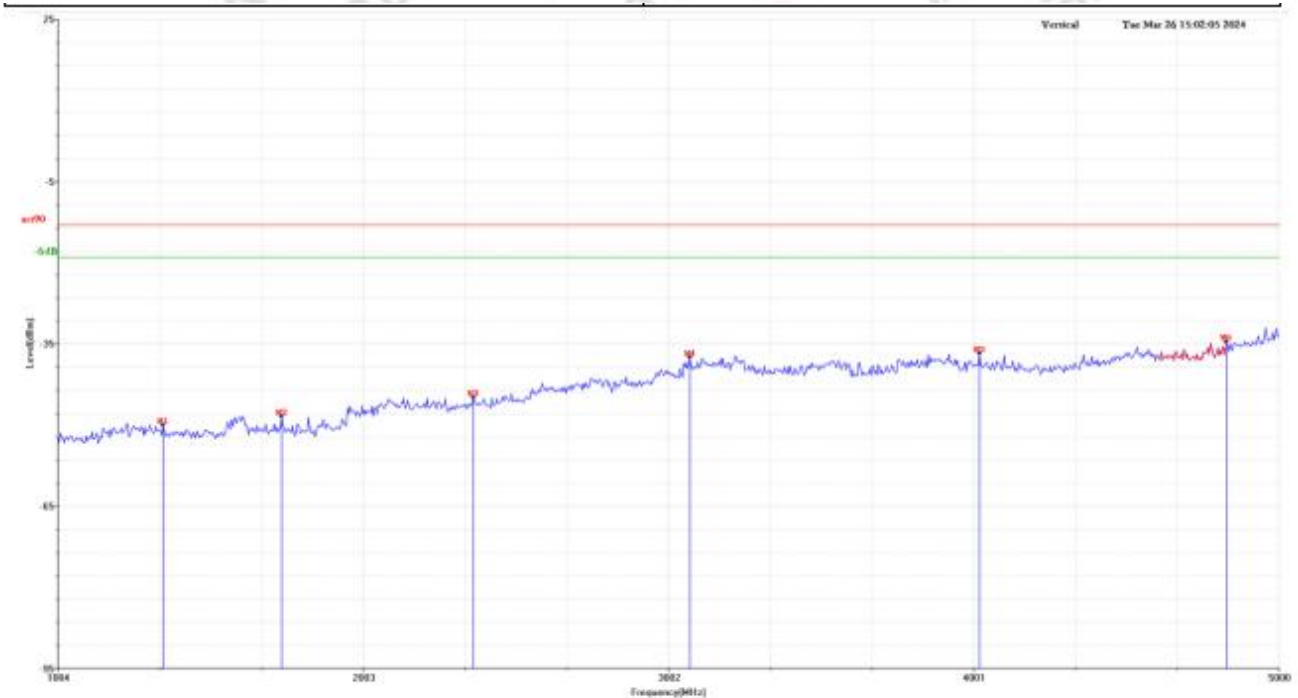


Test Summary Result

Frequency (MHz)	Read_Level (dBm)	Factor (dB)	Level (dBm)	Limit (dBm)	Margin (dB)	Table(o)	Pol/Phase
1348.00	-49.08	1.22	-47.86	-13.00	-34.86	0.00	Horizontal
2116.00	-48.63	3.19	-45.44	-13.00	-32.44	0.00	Horizontal
2752.00	-47.15	5.12	-42.03	-13.00	-29.03	0.00	Horizontal
3532.00	-47.50	9.73	-37.77	-13.00	-24.77	0.00	Horizontal
4392.00	-49.21	12.25	-36.96	-13.00	-23.96	0.00	Horizontal
*4948.00	-47.52	14.39	-33.13	-13.00	-20.13	0.00	Horizontal

Note : The test worst case was marked with the " * " in front of frequency.

Test Mode	Low data rate ISOB-40k	Test Channel	Low Channel
Frequency range	1GHZ-5GHz	Antenna	Vertical

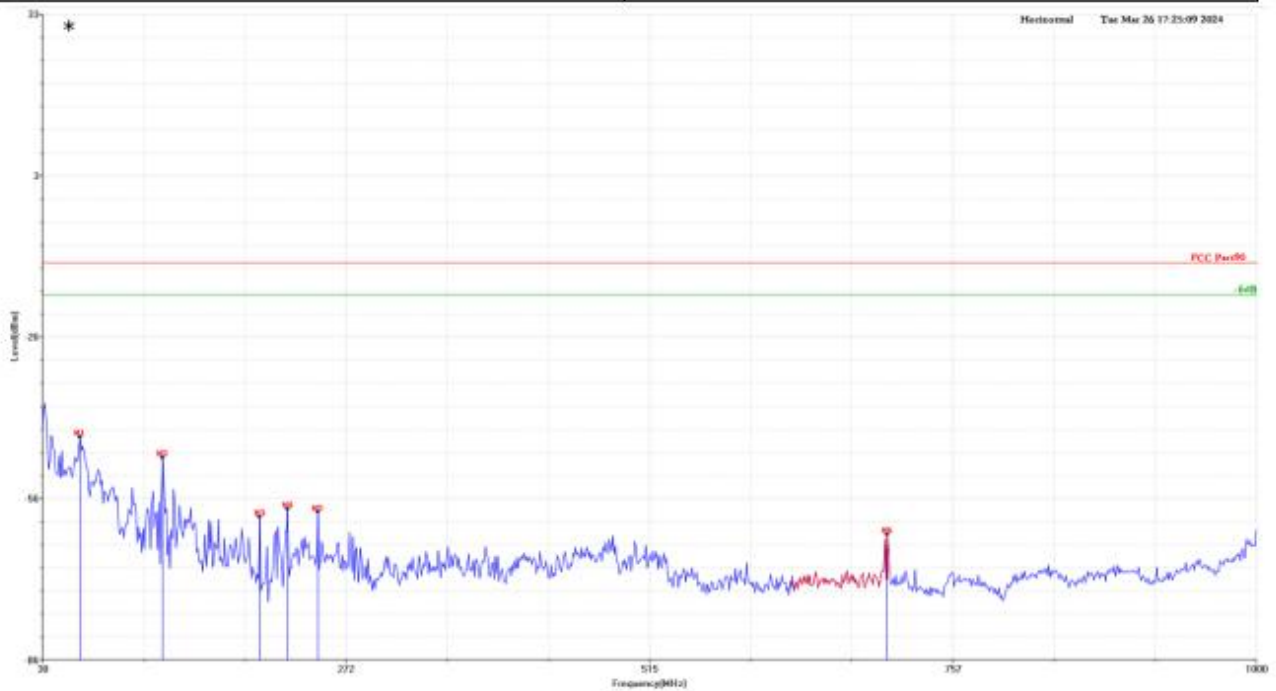


Test Summary Result

Frequency (MHz)	Read_Level (dBm)	Factor (dB)	Level (dBm)	Limit (dBm)	Margin (dB)	Table(o)	Pol/Phase
1348.00	-50.28	0.27	-50.01	-13.00	-37.01	0.00	Vertical
1736.00	-48.14	-0.26	-48.40	-13.00	-35.40	0.00	Vertical
2364.00	-48.29	3.34	-44.95	-13.00	-31.95	0.00	Vertical
3072.00	-47.03	9.54	-37.49	-13.00	-24.49	0.00	Vertical
4020.00	-48.80	12.00	-36.80	-13.00	-23.80	0.00	Vertical
*4828.00	-48.03	13.38	-34.65	-13.00	-21.65	0.00	Vertical

Note : The test worse case was marked with the " * " in front of frequency.

Test Mode	Low data rate ISOB-40k	Test Channel	High Channel
Frequency range	30MHz-1000MHz	Antenna	Horizontal

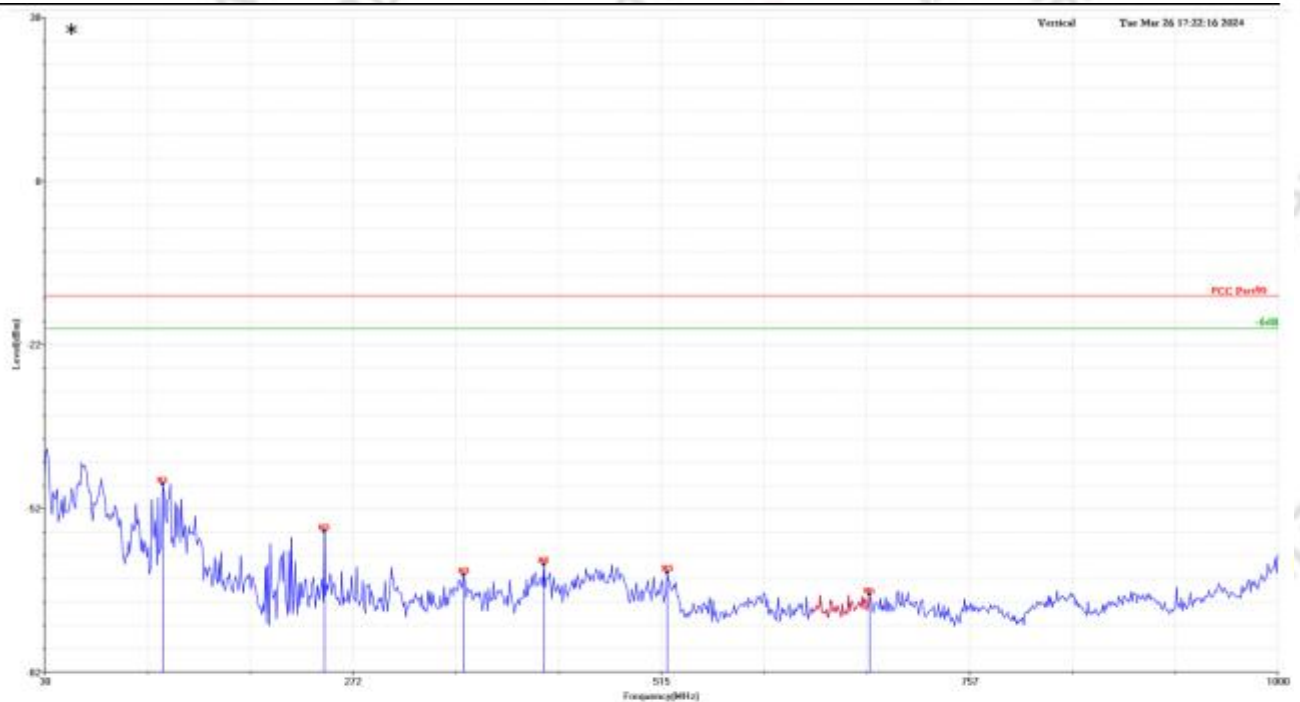


Test Summary Result

Frequency (MHz)	Read_Level (dBm)	Factor (dB)	Level (dBm)	Limit (dBm)	Margin (dB)	Table(o)	Pol/Phase
*60.07	-33.88	-11.56	-45.44	-13.00	-32.44	0.00	Horizontal
126.03	-35.41	-13.83	-49.24	-13.00	-36.24	0.00	Horizontal
203.63	-40.70	-19.56	-60.26	-13.00	-47.26	0.00	Horizontal
225.94	-39.09	-19.74	-58.83	-13.00	-45.83	0.00	Horizontal
250.19	-42.98	-16.35	-59.33	-13.00	-46.33	0.00	Horizontal
705.12	-55.03	-8.52	-63.55	-13.00	-50.55	0.00	Horizontal

Note : The test worst case was marked with the " * " in front of frequency.

Test Mode	Low data rate ISOB-40k	Test Channel	High Channel
Frequency range	30MHz-1000MHz	Antenna	Vertical

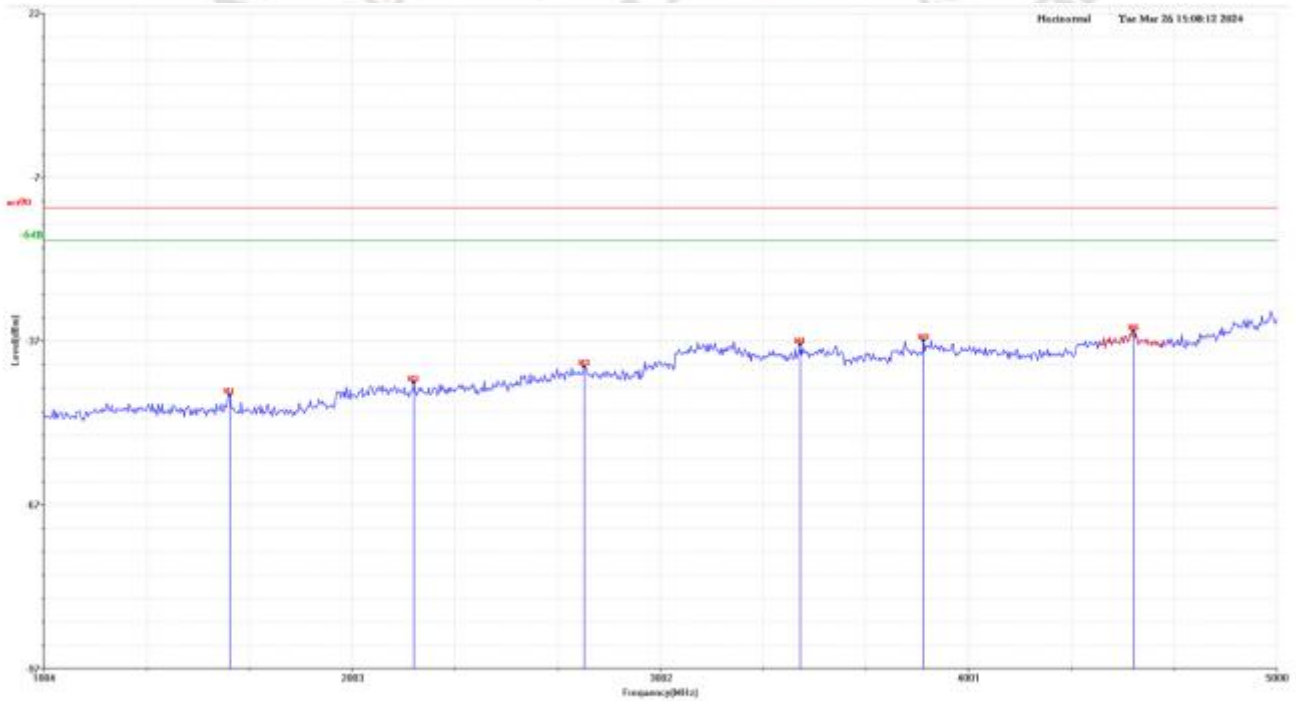


Test Summary Result

Frequency (MHz)	Read_Level (dBm)	Factor (dB)	Level (dBm)	Limit (dBm)	Margin (dB)	Table(o)	Pol/Phase
*123.12	-39.00	-8.54	-47.54	-13.00	-34.54	0.00	Vertical
250.19	-42.00	-14.21	-56.21	-13.00	-43.21	0.00	Vertical
359.80	-51.26	-12.95	-64.21	-13.00	-51.21	0.00	Vertical
422.85	-50.62	-11.68	-62.30	-13.00	-49.30	0.00	Vertical
519.85	-54.84	-8.93	-63.77	-13.00	-50.77	0.00	Vertical
678.93	-60.30	-7.50	-67.80	-13.00	-54.80	0.00	Vertical

Note : The test worst case was marked with the " *" in front of frequency.

Test Mode	Low data rate ISOB-40k	Test Channel	High Channel
Frequency range	1GHZ-5GHz	Antenna	Horizontal

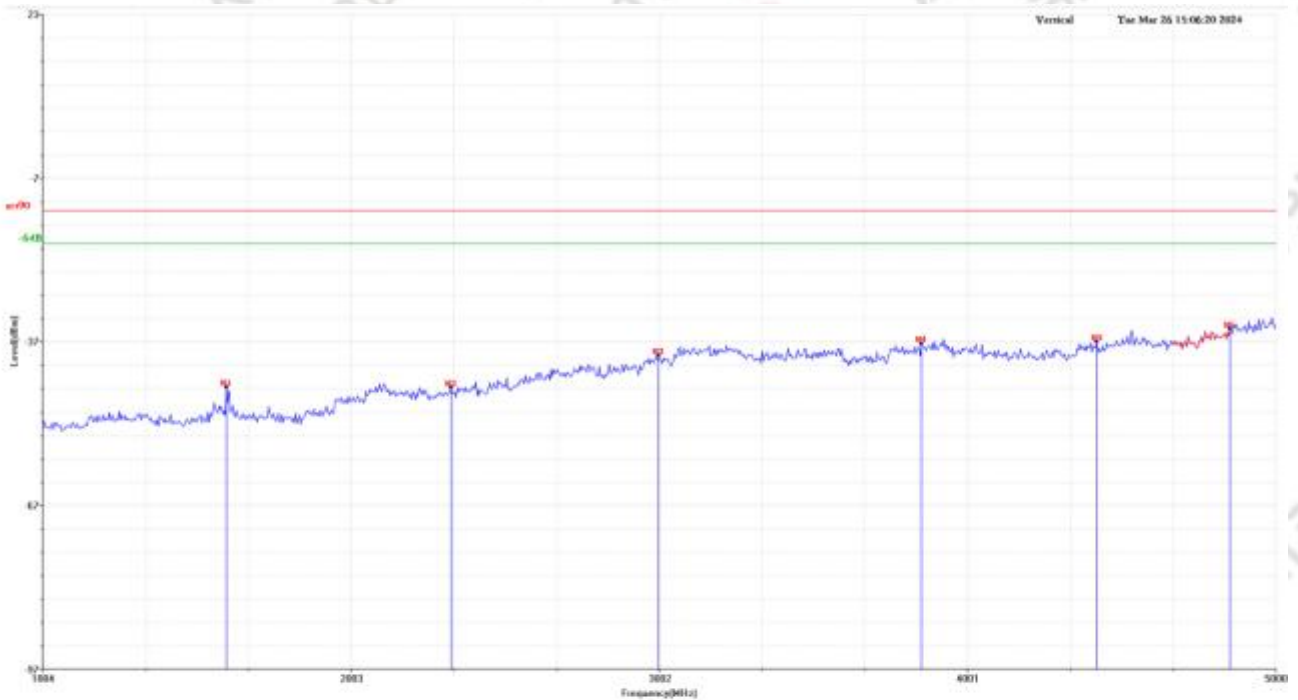


Test Summary Result

Frequency (MHz)	Read_Level (dBm)	Factor (dB)	Level (dBm)	Limit (dBm)	Margin (dB)	Table(o)	Pol/Phase
1608.00	-47.93	0.56	-47.37	-13.00	-34.37	0.00	Horizontal
2204.00	-47.90	2.86	-45.04	-13.00	-32.04	0.00	Horizontal
2756.00	-47.23	5.12	-42.11	-13.00	-29.11	0.00	Horizontal
3456.00	-47.87	9.73	-38.14	-13.00	-25.14	0.00	Horizontal
3856.00	-49.73	12.36	-37.37	-13.00	-24.37	0.00	Horizontal
*4536.00	-48.13	12.45	-35.68	-13.00	-22.68	0.00	Horizontal

Note : The test worse case was marked with the " * " in front of frequency.

Test Mode	Low data rate ISOB-40k	Test Channel	High Channel
Frequency range	1GHZ-5GHz	Antenna	Vertical

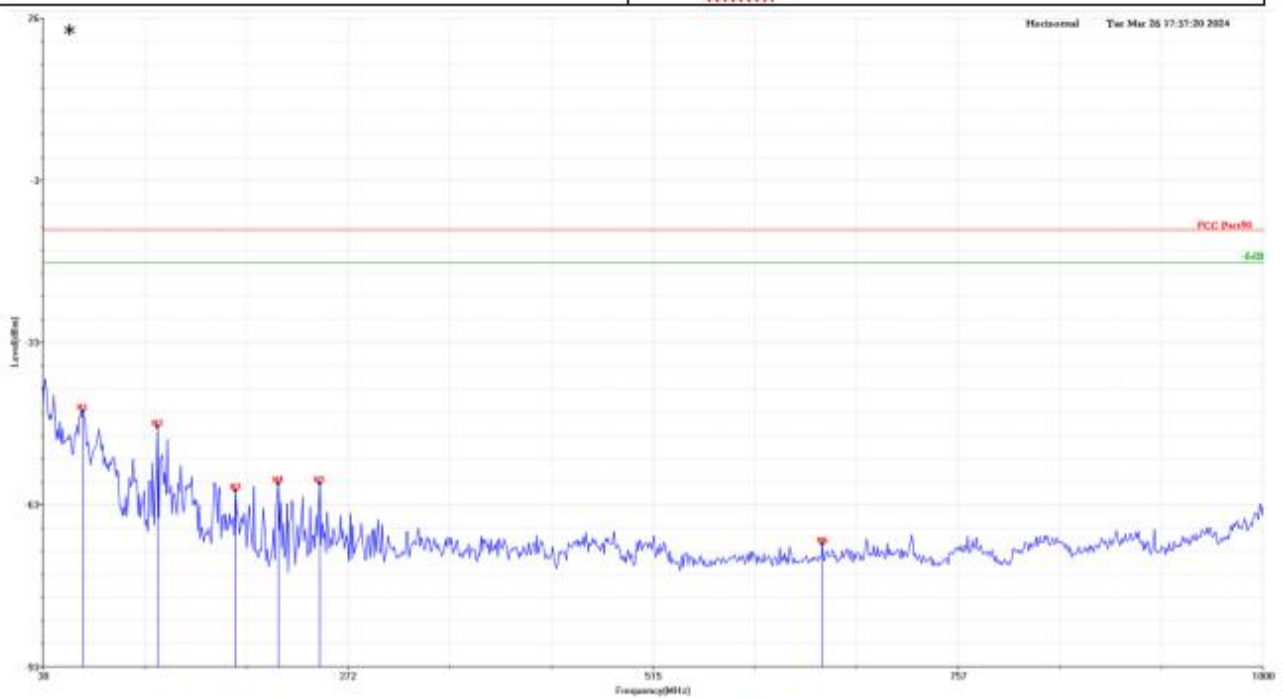


Test Summary Result

Frequency (MHz)	Read_Level (dBm)	Factor (dB)	Level (dBm)	Limit (dBm)	Margin (dB)	Table(o)	Pol/Phase
1600.00	-44.88	-0.44	-45.32	-13.00	-32.32	0.00	Vertical
2328.00	-48.32	2.93	-45.39	-13.00	-32.39	0.00	Vertical
3000.00	-47.62	8.11	-39.51	-13.00	-26.51	0.00	Vertical
3852.00	-50.39	13.02	-37.37	-13.00	-24.37	0.00	Vertical
4420.00	-49.11	12.09	-37.02	-13.00	-24.02	0.00	Vertical
*4852.00	-49.01	14.36	-34.65	-13.00	-21.65	0.00	Vertical

Note : The test worse case was marked with the " * " in front of frequency.

Test Mode	High data rate ISOB-80k	Test Channel	Low Channel
Frequency range	30MHz-1000MHz	Antenna	Horizontal

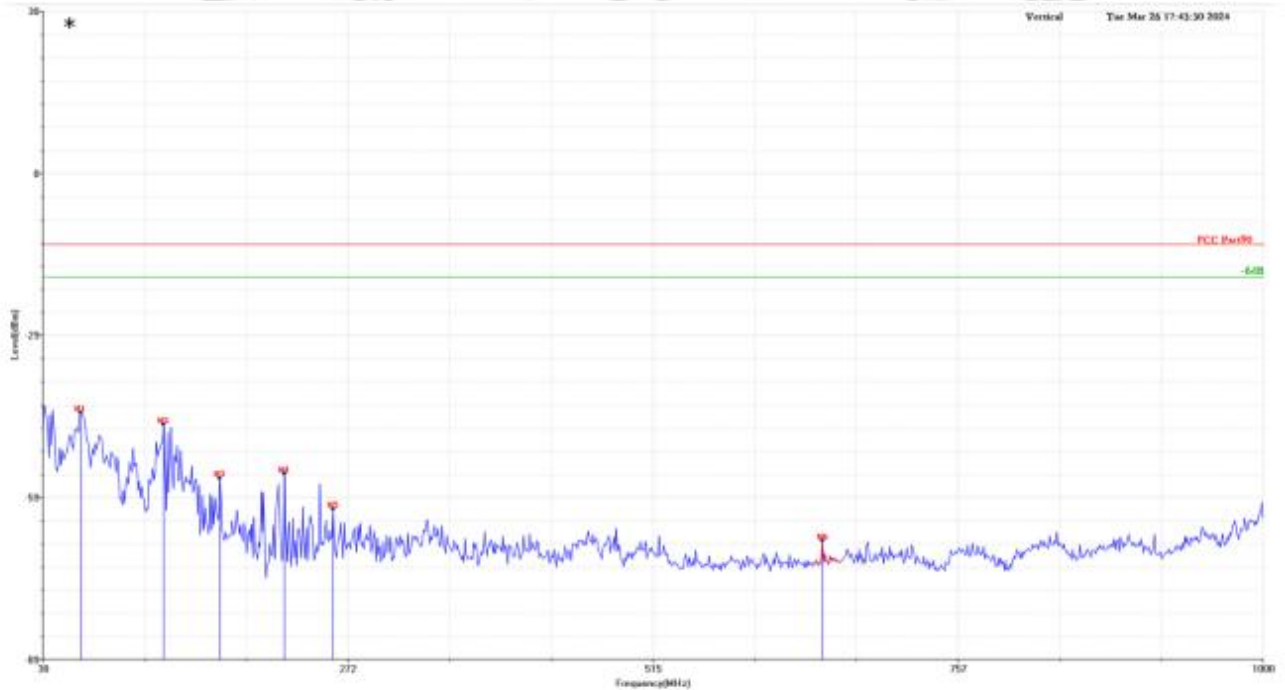


Test Summary Result

Frequency (MHz)	Read_Level (dBm)	Factor (dB)	Level (dBm)	Limit (dBm)	Margin (dB)	Table(o)	Pol/Phase
*62.01	-34.41	-12.17	-46.58	-13.00	-33.58	0.00	Horizontal
121.18	-35.28	-14.12	-49.40	-13.00	-36.40	0.00	Horizontal
183.26	-43.99	-17.27	-61.26	-13.00	-48.26	0.00	Horizontal
217.21	-39.87	-20.08	-59.95	-13.00	-46.95	0.00	Horizontal
250.19	-43.56	-16.35	-59.91	-13.00	-46.91	0.00	Horizontal
649.83	-61.10	-10.01	-71.11	-13.00	-58.11	0.00	Horizontal

Note : The test worse case was marked with the " * " in front of frequency.

Test Mode	High data rate ISOB-80k	Test Channel	Low Channel
Frequency range	30MHz-1000MHz	Antenna	Vertical

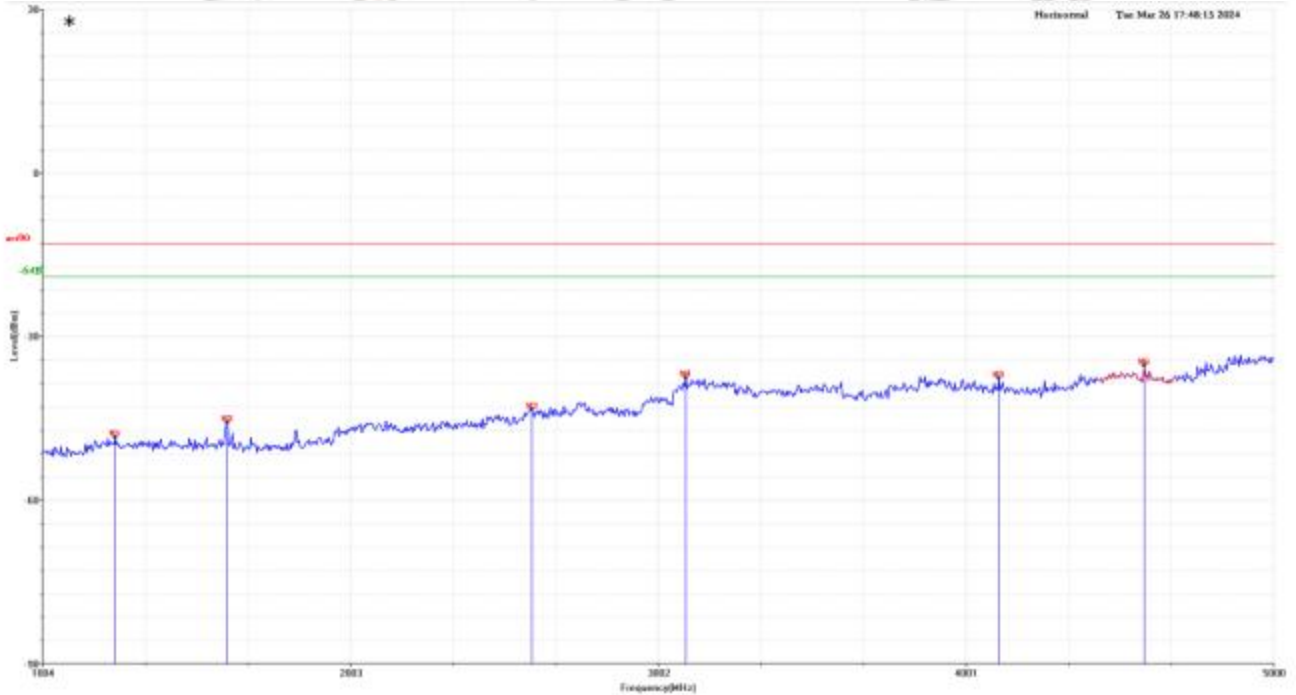


Test Summary Result

Frequency (MHz)	Read_Level (dBm)	Factor (dB)	Level (dBm)	Limit (dBm)	Margin (dB)	Table(o)	Pol/Phase
*60.07	-35.47	-8.64	-44.11	-13.00	-31.11	0.00	Vertical
126.03	-37.75	-8.52	-46.27	-13.00	-33.27	0.00	Vertical
170.65	-44.83	-11.45	-56.28	-13.00	-43.28	0.00	Vertical
222.06	-37.88	-17.54	-55.42	-13.00	-42.42	0.00	Vertical
260.86	-48.47	-13.48	-61.95	-13.00	-48.95	0.00	Vertical
649.83	-59.73	-8.08	-67.81	-13.00	-54.81	0.00	Vertical

Note : The test worse case was marked with the " *" in front of frequency.

Test Mode	High data rate ISOB-80k	Test Channel	Low Channel
Frequency range	1GHZ-5GHz	Antenna	Horizontal

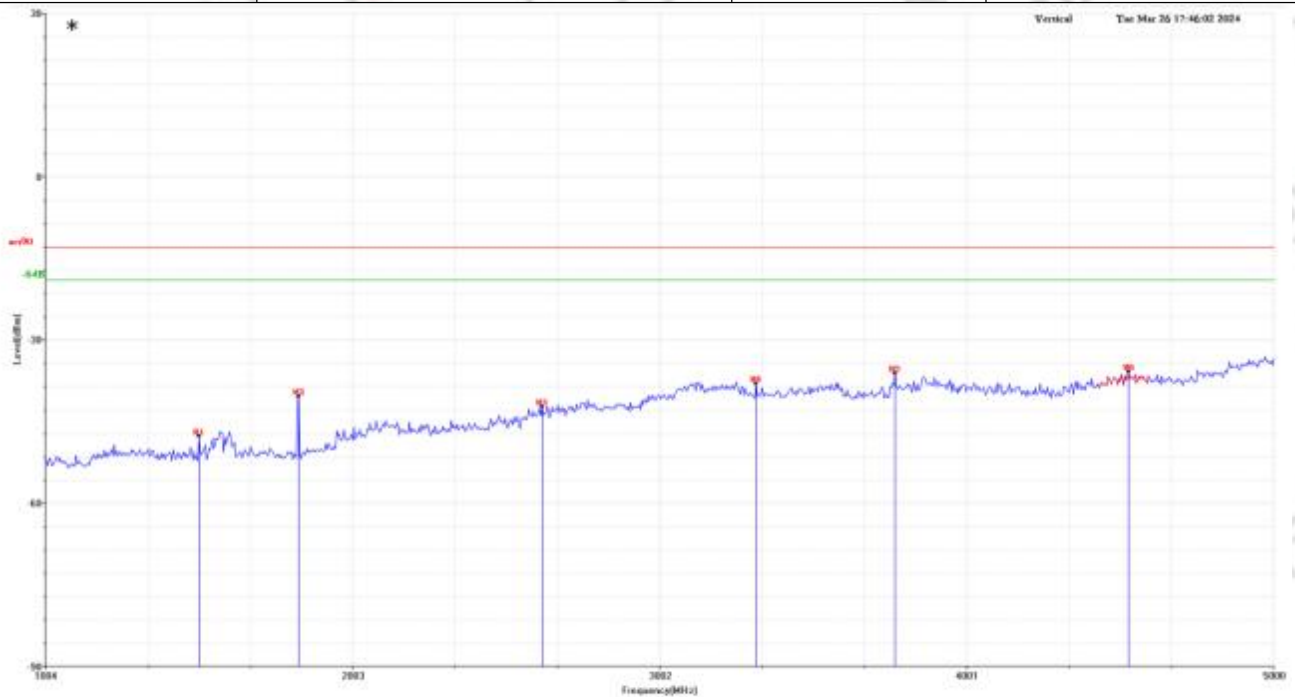


Test Summary Result

Frequency (MHz)	Read_Level (dBm)	Factor (dB)	Level (dBm)	Limit (dBm)	Margin (dB)	Table(o)	Pol/Phase
1240.00	-49.79	1.30	-48.49	-13.00	-35.49	0.00	Horizontal
1604.00	-46.37	0.56	-45.81	-13.00	-32.81	0.00	Horizontal
2592.00	-47.59	4.20	-43.39	-13.00	-30.39	0.00	Horizontal
3092.00	-46.97	9.41	-37.56	-13.00	-24.56	0.00	Horizontal
4108.00	-48.62	10.99	-37.63	-13.00	-24.63	0.00	Horizontal
*4580.00	-47.15	11.85	-35.30	-13.00	-22.30	0.00	Horizontal

Note : The test worst case was marked with the " * " in front of frequency.

Test Mode	High data rate ISOB-80k	Test Channel	Low Channel
Frequency range	1GHZ-5GHz	Antenna	Vertical

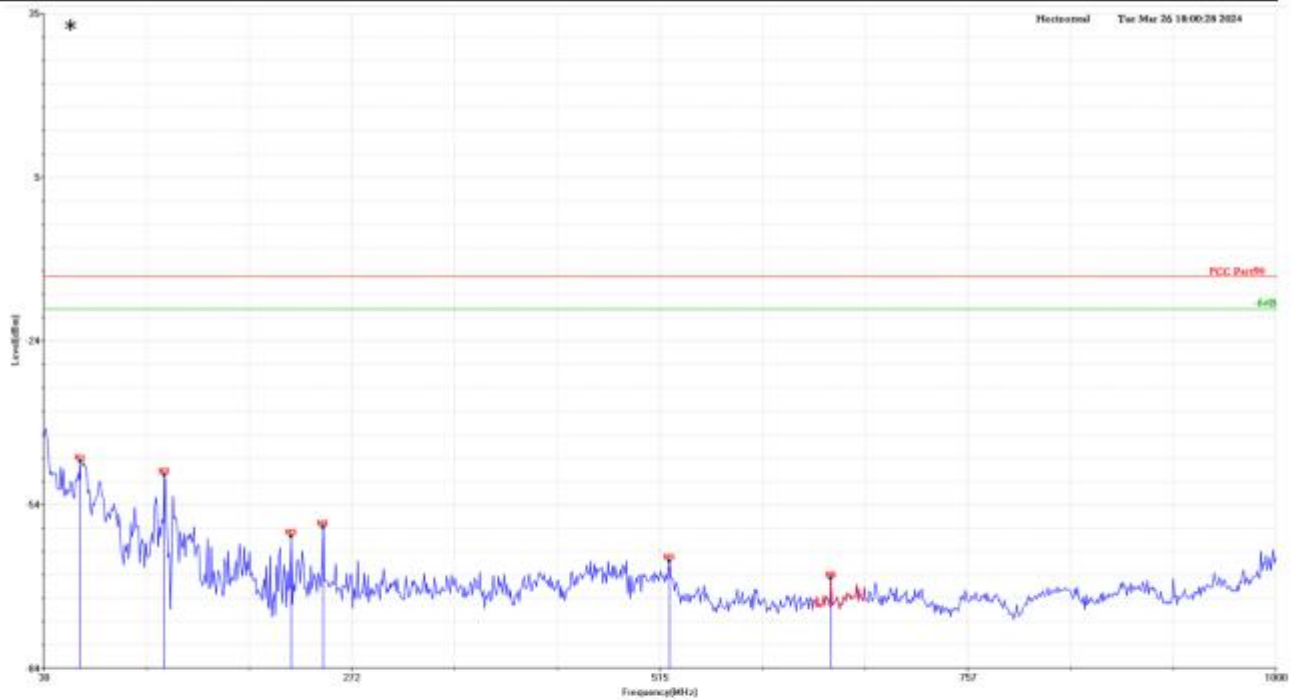


Test Summary Result

Frequency (MHz)	Read_Level (dBm)	Factor (dB)	Level (dBm)	Limit (dBm)	Margin (dB)	Table(o)	Pol/Phase
1504.00	-47.10	-0.58	-47.68	-13.00	-34.68	0.00	Vertical
1828.00	-39.77	-0.63	-40.40	-13.00	-27.40	0.00	Vertical
2620.00	-47.14	4.86	-42.28	-13.00	-29.28	0.00	Vertical
3316.00	-47.11	9.05	-38.06	-13.00	-25.06	0.00	Vertical
3768.00	-48.04	11.90	-36.14	-13.00	-23.14	0.00	Vertical
*4528.00	-48.33	12.51	-35.82	-13.00	-22.82	0.00	Vertical

Note : The test worse case was marked with the " * " in front of frequency.

Test Mode	High data rate ISOB-80k	Test Channel	High Channel
Frequency range	30MHz-1000MHz	Antenna	Horizontal

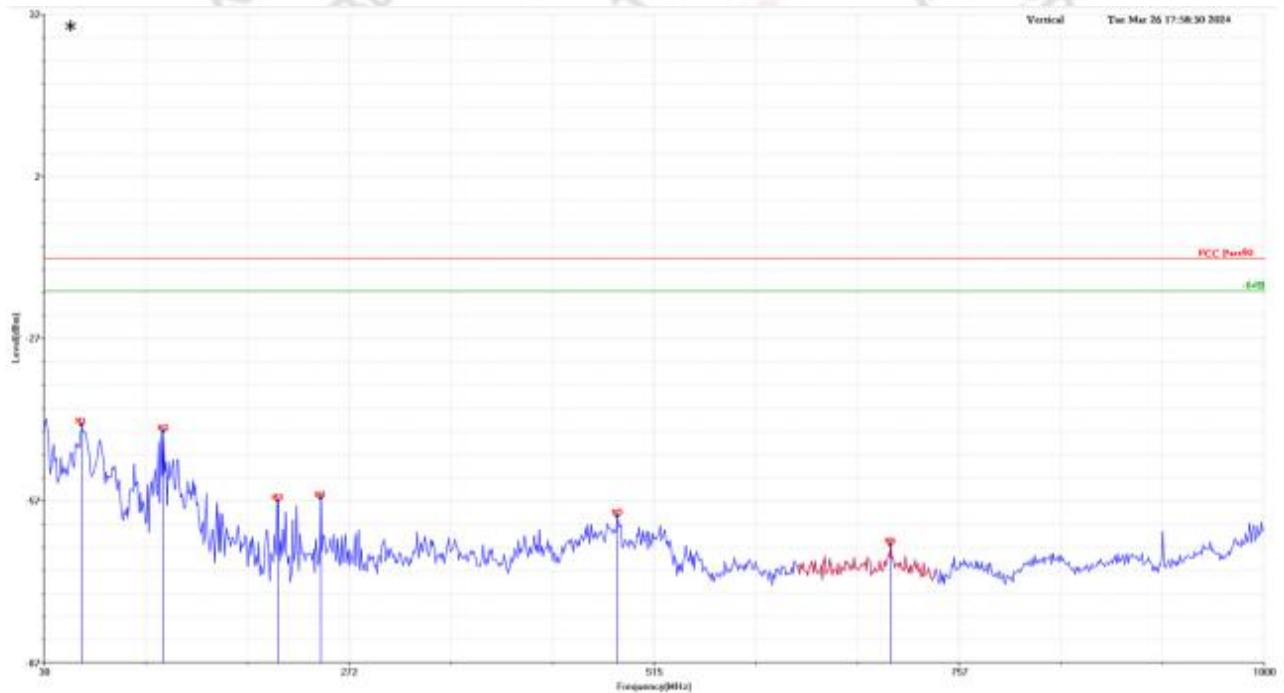


Test Summary Result

Frequency (MHz)	Read_Level (dBm)	Factor (dB)	Level (dBm)	Limit (dBm)	Margin (dB)	Table(o)	Pol/Phase
*59.10	-35.88	-11.04	-46.92	-13.00	-33.92	0.00	Horizontal
125.06	-35.61	-13.83	-49.44	-13.00	-36.44	0.00	Horizontal
224.97	-40.96	-19.74	-60.70	-13.00	-47.70	0.00	Horizontal
250.19	-42.68	-16.35	-59.03	-13.00	-46.03	0.00	Horizontal
522.76	-54.39	-10.85	-65.24	-13.00	-52.24	0.00	Horizontal
649.83	-58.37	-10.01	-68.38	-13.00	-55.38	0.00	Horizontal

Note : The test worse case was marked with the " * " in front of frequency.

Test Mode	High data rate ISOB-80k	Test Channel	High Channel
Frequency range	30MHz-1000MHz	Antenna	Vertical

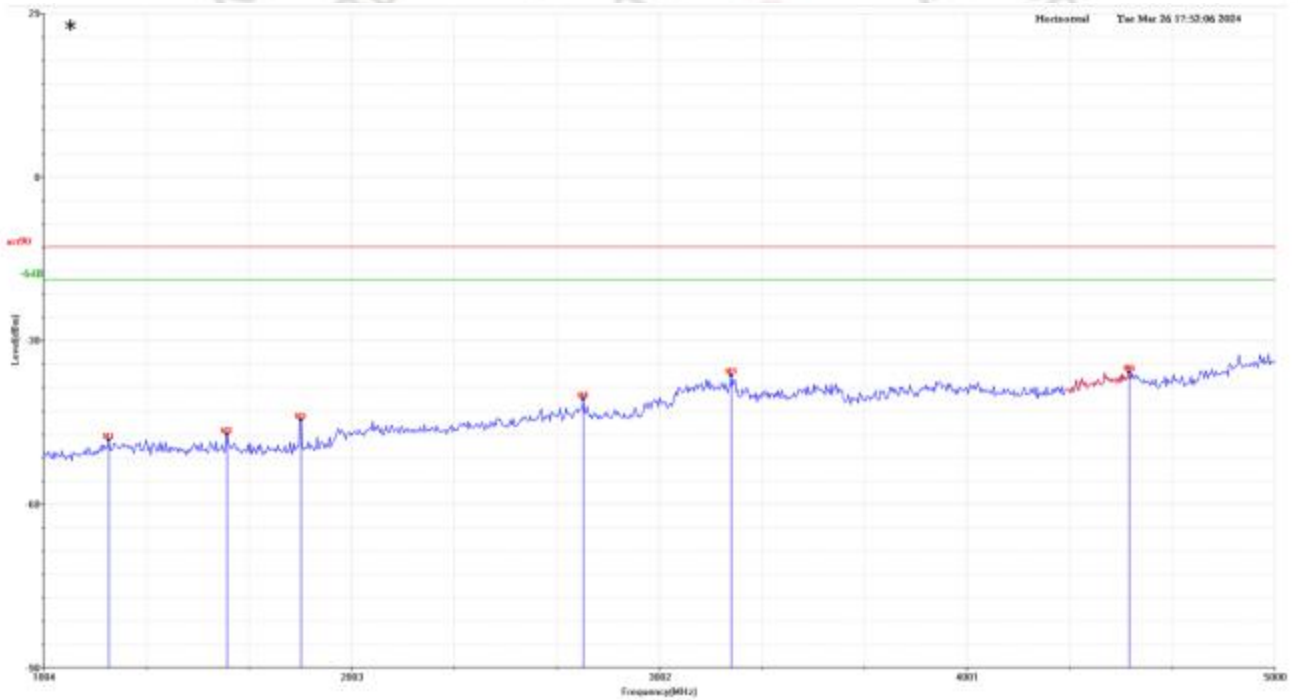


Test Summary Result

Frequency (MHz)	Read_Level (dBm)	Factor (dB)	Level (dBm)	Limit (dBm)	Margin (dB)	Table(o)	Pol/Phase
*60.07	-35.18	-8.64	-43.82	-13.00	-30.82	0.00	Vertical
125.06	-36.52	-8.52	-45.04	-13.00	-32.04	0.00	Vertical
216.24	-39.97	-17.99	-57.96	-13.00	-44.96	0.00	Vertical
250.19	-43.17	-14.21	-57.38	-13.00	-44.38	0.00	Vertical
485.90	-50.30	-10.43	-60.73	-13.00	-47.73	0.00	Vertical
703.18	-59.41	-6.63	-66.04	-13.00	-53.04	0.00	Vertical

Note : The test worst case was marked with the " * " in front of frequency.

Test Mode	High data rate ISOB-80k	Test Channel	High Channel
Frequency range	1GHZ-5GHz	Antenna	Horizontal

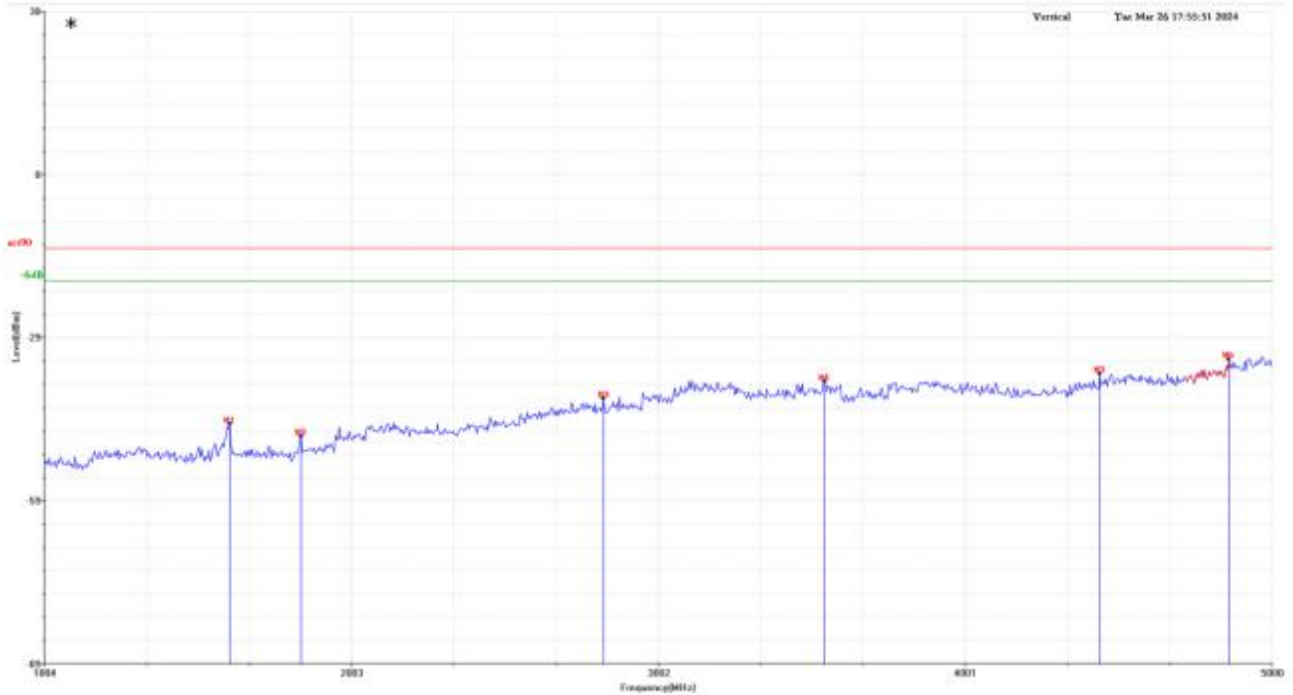


Test Summary Result

Frequency (MHz)	Read_Level (dBm)	Factor (dB)	Level (dBm)	Limit (dBm)	Margin (dB)	Table(o)	Pol/Phase
1216.00	-49.78	1.30	-48.48	-13.00	-35.48	0.00	Horizontal
1600.00	-48.06	0.56	-47.50	-13.00	-34.50	0.00	Horizontal
1840.00	-45.12	0.33	-44.79	-13.00	-31.79	0.00	Horizontal
2756.00	-46.10	5.12	-40.98	-13.00	-27.98	0.00	Horizontal
3236.00	-46.44	9.81	-36.63	-13.00	-23.63	0.00	Horizontal
*4528.00	-48.50	12.45	-36.05	-13.00	-23.05	0.00	Horizontal

Note : The test worse case was marked with the " * " in front of frequency.

Test Mode	High data rate ISOB-80k	Test Channel	High Channel
Frequency range	1GHZ-5GHz	Antenna	Vertical

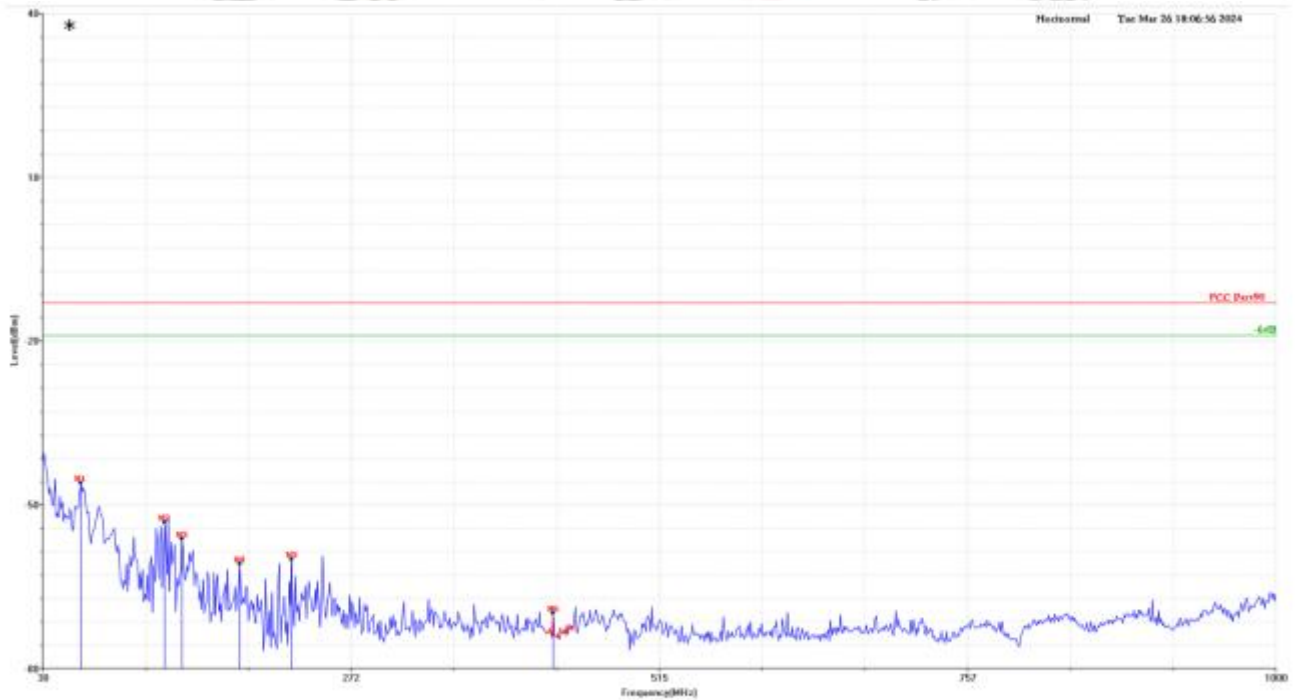


Test Summary Result

Frequency (MHz)	Read_Level (dBm)	Factor (dB)	Level (dBm)	Limit (dBm)	Margin (dB)	Table(o)	Pol/Phase
1608.00	-44.86	-0.44	-45.30	-13.00	-32.30	0.00	Vertical
1840.00	-46.95	-0.63	-47.58	-13.00	-34.58	0.00	Vertical
2824.00	-47.00	6.36	-40.64	-13.00	-27.64	0.00	Vertical
3544.00	-47.61	10.09	-37.52	-13.00	-24.52	0.00	Vertical
4440.00	-48.15	12.09	-36.06	-13.00	-23.06	0.00	Vertical
*4860.00	-47.82	14.36	-33.46	-13.00	-20.46	0.00	Vertical

Note : The test worst case was marked with the " * " in front of frequency.

Test Mode	Unmodulated ISO1374	Test Channel	Low Channel
Frequency range	30MHz-1000MHz	Antenna	Horizontal

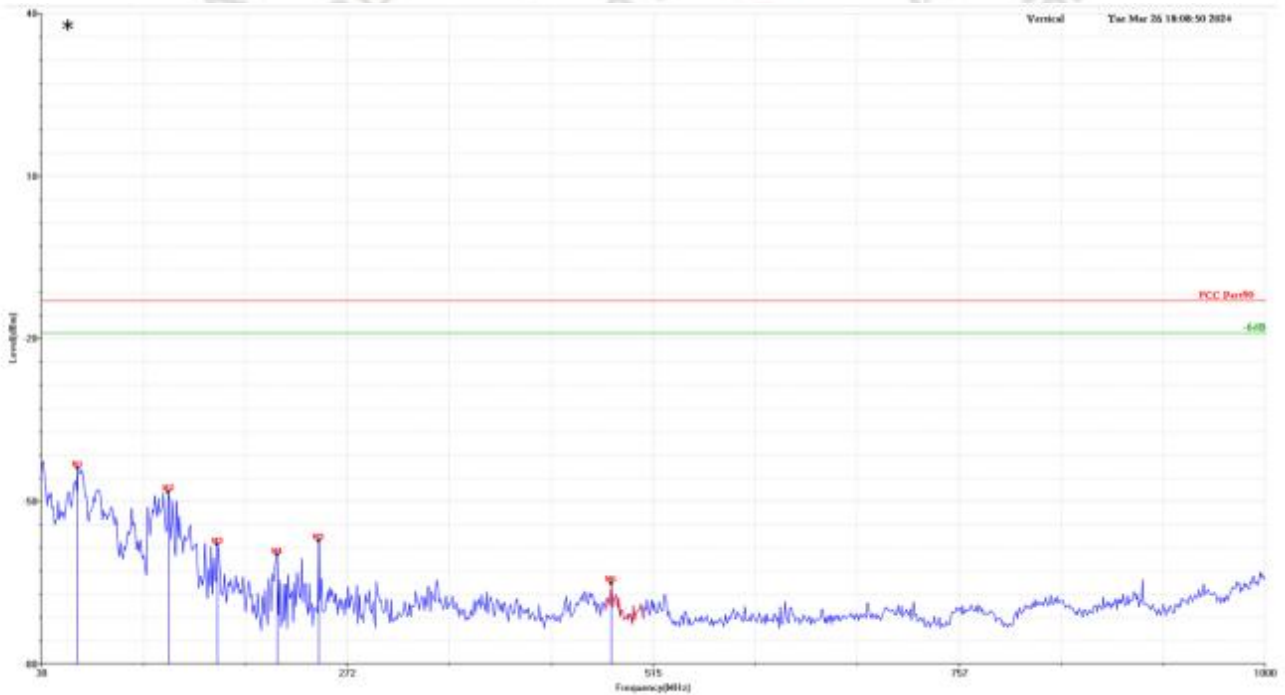


Test Summary Result

Frequency (MHz)	Read_Level (dBm)	Factor (dB)	Level (dBm)	Limit (dBm)	Margin (dB)	Table(o)	Pol/Phase
*60.07	-34.46	-11.56	-46.02	-13.00	-33.02	0.00	Horizontal
126.03	-39.41	-13.83	-53.24	-13.00	-40.24	0.00	Horizontal
139.61	-42.32	-13.95	-56.27	-13.00	-43.27	0.00	Horizontal
185.20	-43.58	-17.27	-60.85	-13.00	-47.85	0.00	Horizontal
225.94	-40.29	-19.74	-60.03	-13.00	-47.03	0.00	Horizontal
431.58	-56.29	-13.56	-69.85	-13.00	-56.85	0.00	Horizontal

Note : The test worst case was marked with the " * " in front of frequency.

Test Mode	Unmodulated ISO1374	Test Channel	Low Channel
Frequency range	30MHz-1000MHz	Antenna	Vertical

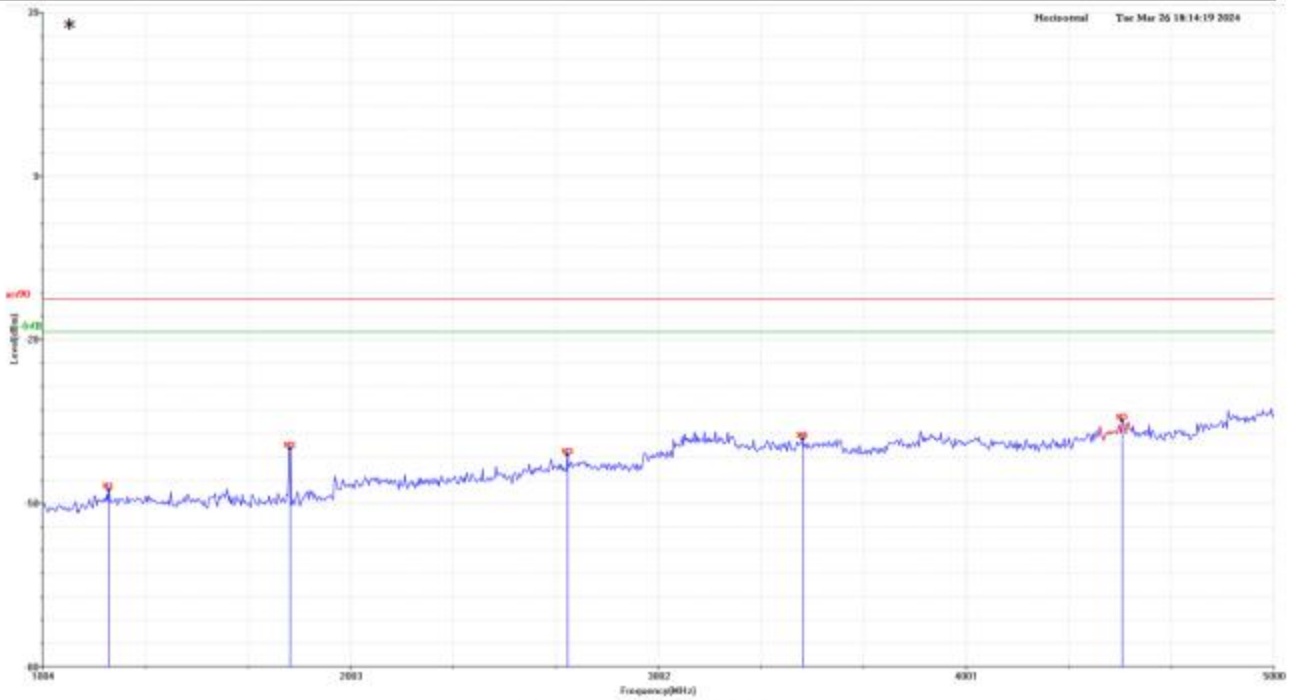


Test Summary Result

Frequency (MHz)	Read_Level (dBm)	Factor (dB)	Level (dBm)	Limit (dBm)	Margin (dB)	Table(o)	Pol/Phase
*59.10	-35.79	-8.16	-43.95	-13.00	-30.95	0.00	Vertical
130.88	-40.13	-8.24	-48.37	-13.00	-35.37	0.00	Vertical
169.68	-46.57	-11.45	-58.02	-13.00	-45.02	0.00	Vertical
217.21	-41.92	-17.99	-59.91	-13.00	-46.91	0.00	Vertical
250.19	-43.17	-14.21	-57.38	-13.00	-44.38	0.00	Vertical
482.02	-54.76	-10.43	-65.19	-13.00	-52.19	0.00	Vertical

Note : The test worst case was marked with the " * " in front of frequency.

Test Mode	Unmodulated ISO1374	Test Channel	Low Channel
Frequency range	1GHZ-5GHz	Antenna	Horizontal

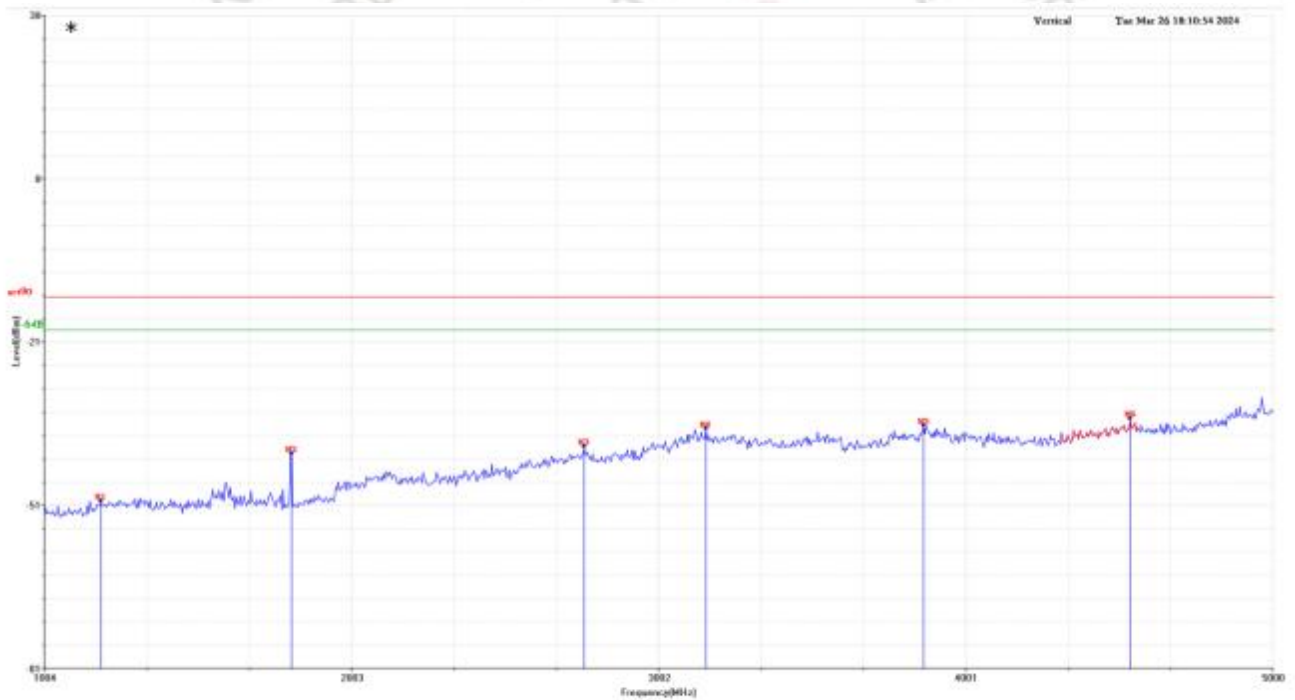


Test Summary Result

Frequency (MHz)	Read_Level (dBm)	Factor (dB)	Level (dBm)	Limit (dBm)	Margin (dB)	Table(o)	Pol/Phase
1220.00	-49.34	1.30	-48.04	-13.00	-35.04	0.00	Horizontal
1808.00	-40.84	0.33	-40.51	-13.00	-27.51	0.00	Horizontal
2708.00	-46.42	4.81	-41.61	-13.00	-28.61	0.00	Horizontal
3472.00	-48.40	9.73	-38.67	-13.00	-25.67	0.00	Horizontal
*4508.00	-47.73	12.45	-35.28	-13.00	-22.28	0.00	Horizontal

Note : The test worst case was marked with the " * " in front of frequency.

Test Mode	Unmodulated ISO1374	Test Channel	Low Channel
Frequency range	1GHZ-5GHz	Antenna	Vertical



Test Summary Result

Frequency (MHz)	Read_Level (dBm)	Factor (dB)	Level (dBm)	Limit (dBm)	Margin (dB)	Table(o)	Pol/Phase
1188.00	-50.56	0.16	-50.40	-13.00	-37.40	0.00	Vertical
1808.00	-41.12	-0.63	-41.75	-13.00	-28.75	0.00	Vertical
2760.00	-46.73	6.36	-40.37	-13.00	-27.37	0.00	Vertical
3156.00	-46.99	9.91	-37.08	-13.00	-24.08	0.00	Vertical
3864.00	-49.53	13.02	-36.51	-13.00	-23.51	0.00	Vertical
*4536.00	-47.79	12.51	-35.28	-13.00	-22.28	0.00	Vertical

Note : The test worst case was marked with the " * " in front of frequency.

Test Mode	Unmodulated ISO1374	Test Channel	High Channel
Frequency range	30MHz-1000MHz	Antenna	Horizontal

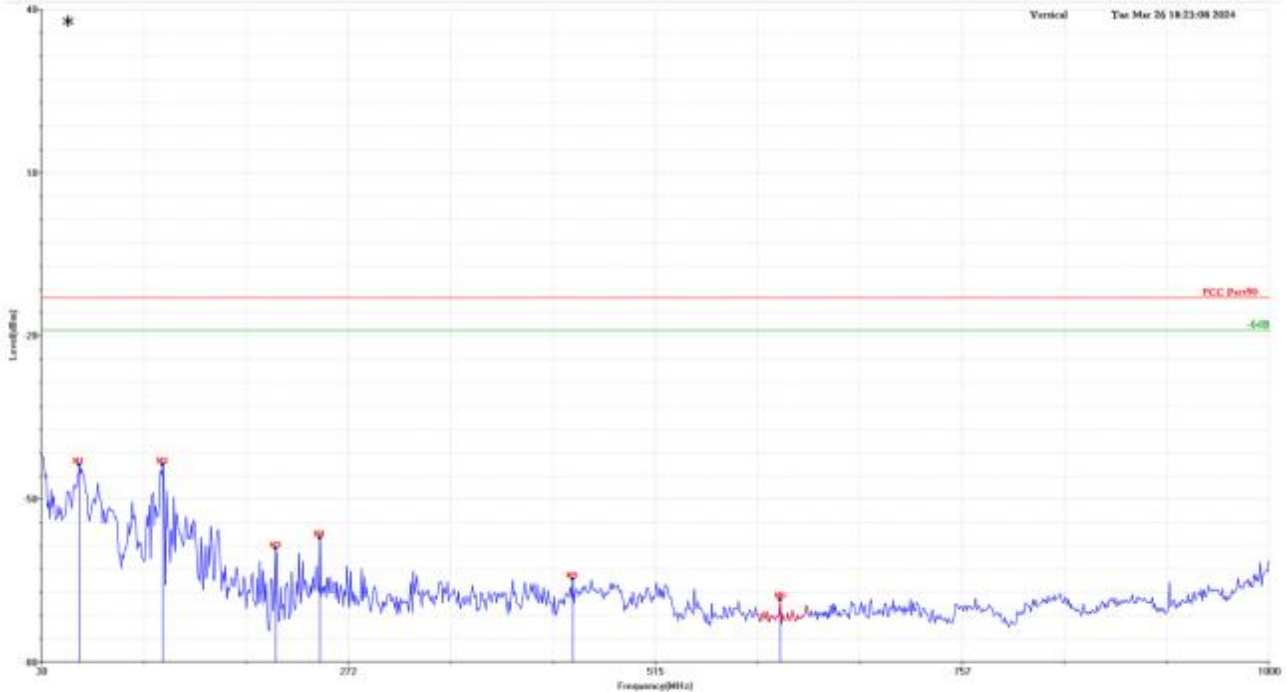


Test Summary Result

Frequency (MHz)	Read_Level (dBm)	Factor (dB)	Level (dBm)	Limit (dBm)	Margin (dB)	Table(o)	Pol/Phase
*126.03	-34.68	-13.83	-48.51	-13.00	-35.51	0.00	Horizontal
222.06	-41.52	-19.74	-61.26	-13.00	-48.26	0.00	Horizontal
250.19	-43.60	-16.35	-59.95	-13.00	-46.95	0.00	Horizontal
389.87	-48.38	-14.82	-63.20	-13.00	-50.20	0.00	Horizontal
519.85	-56.40	-10.85	-67.25	-13.00	-54.25	0.00	Horizontal
894.27	-62.94	-5.29	-68.23	-13.00	-55.23	0.00	Horizontal

Note : The test worst case was marked with the " * " in front of frequency.

Test Mode	Unmodulated ISO1374	Test Channel	High Channel
Frequency range	30MHz-1000MHz	Antenna	Vertical

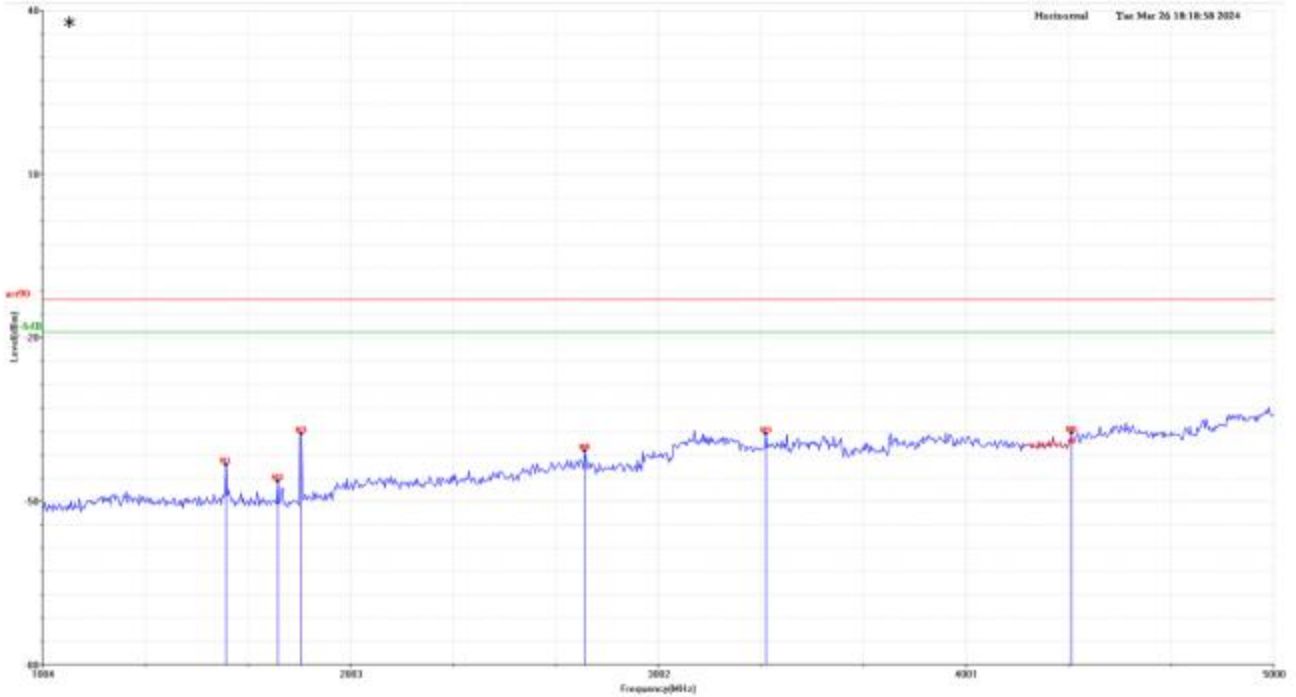


Test Summary Result

Frequency (MHz)	Read_Level (dBm)	Factor (dB)	Level (dBm)	Limit (dBm)	Margin (dB)	Table(o)	Pol/Phase
60.07	-35.14	-8.64	-43.78	-13.00	-30.78	0.00	Vertical
*126.03	-35.24	-8.52	-43.76	-13.00	-30.76	0.00	Vertical
215.27	-40.94	-18.22	-59.16	-13.00	-46.16	0.00	Vertical
250.19	-43.01	-14.21	-57.22	-13.00	-44.22	0.00	Vertical
450.01	-53.09	-11.68	-64.77	-13.00	-51.77	0.00	Vertical
613.94	-60.49	-8.08	-68.57	-13.00	-55.57	0.00	Vertical

Note : The test worst case was marked with the " * " in front of frequency.

Test Mode	Unmodulated ISO1374	Test Channel	High Channel
Frequency range	1GHZ-5GHz	Antenna	Horizontal

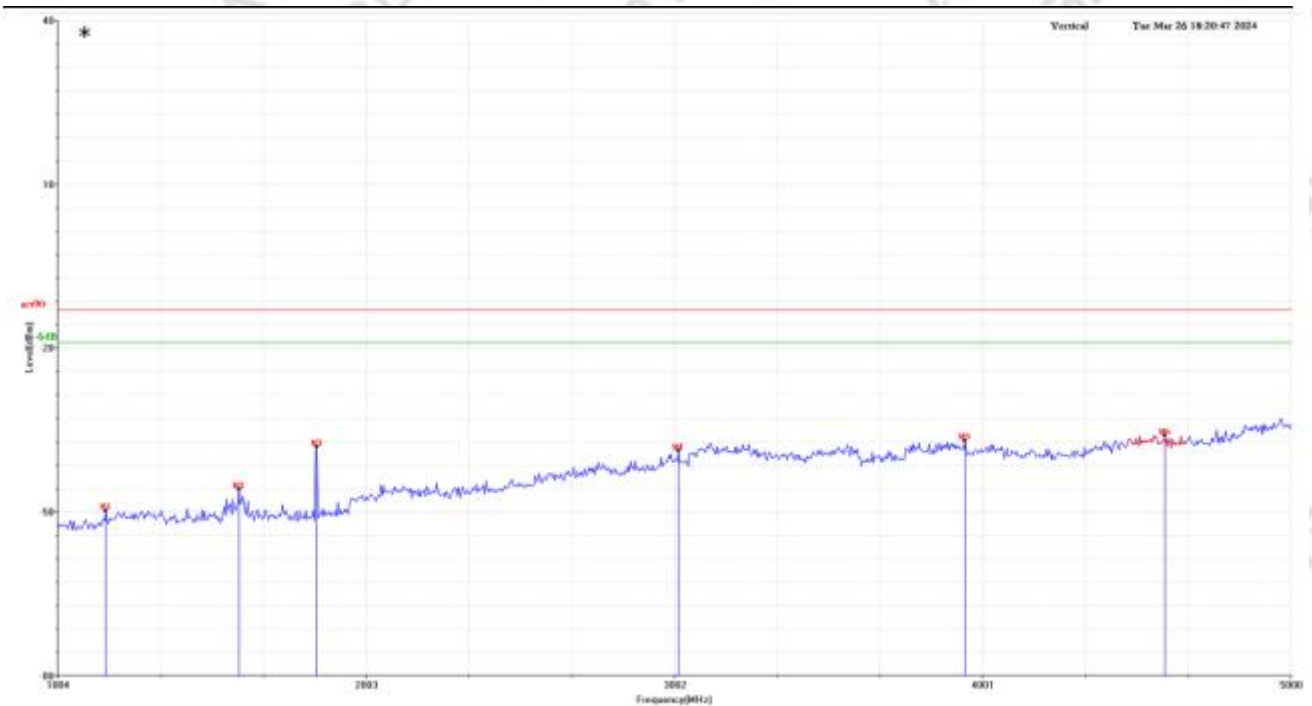


Test Summary Result

Frequency (MHz)	Read_Level (dBm)	Factor (dB)	Level (dBm)	Limit (dBm)	Margin (dB)	Table(o)	Pol/Phase
1600.00	-43.94	0.56	-43.38	-13.00	-30.38	0.00	Horizontal
1768.00	-46.73	0.33	-46.40	-13.00	-33.40	0.00	Horizontal
1844.00	-37.99	0.33	-37.66	-13.00	-24.66	0.00	Horizontal
2764.00	-45.94	5.12	-40.82	-13.00	-27.82	0.00	Horizontal
3352.00	-46.49	8.83	-37.66	-13.00	-24.66	0.00	Horizontal
*4344.00	-48.82	11.27	-37.55	-13.00	-24.55	0.00	Horizontal

Note : The test worst case was marked with the " * " in front of frequency.

Test Mode	Unmodulated ISO1374	Test Channel	High Channel
Frequency range	1GHZ-5GHz	Antenna	Vertical

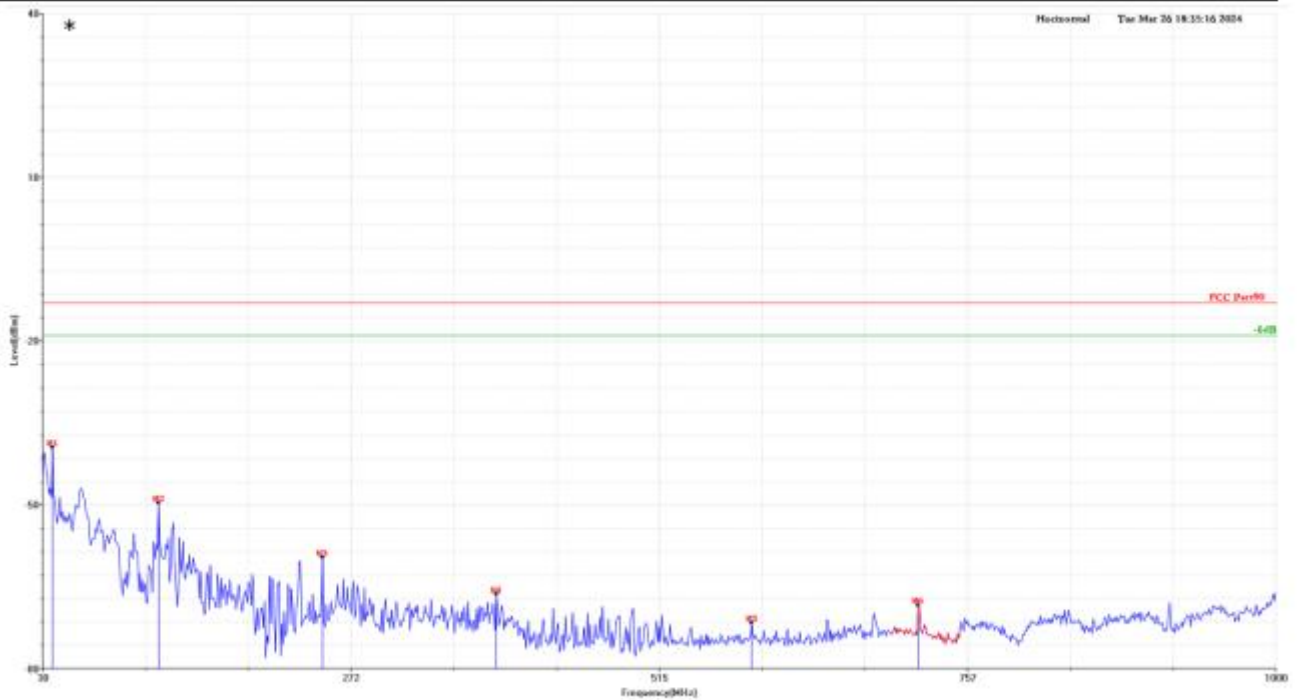


Test Summary Result

Frequency (MHz)	Read_Level (dBm)	Factor (dB)	Level (dBm)	Limit (dBm)	Margin (dB)	Table(o)	Pol/Phase
1160.00	-50.01	0.16	-49.85	-13.00	-36.85	0.00	Vertical
1592.00	-45.50	-0.44	-45.94	-13.00	-32.94	0.00	Vertical
1844.00	-37.47	-0.63	-38.10	-13.00	-25.10	0.00	Vertical
3016.00	-46.96	8.11	-38.85	-13.00	-25.85	0.00	Vertical
3944.00	-50.00	13.02	-36.98	-13.00	-23.98	0.00	Vertical
*4592.00	-48.28	12.25	-36.03	-13.00	-23.03	0.00	Vertical

Note : The test worse case was marked with the " *" in front of frequency.

Test Mode	PS111	Test Channel	Channel 13
Frequency range	30MHz-1000MHz	Antenna	Horizontal

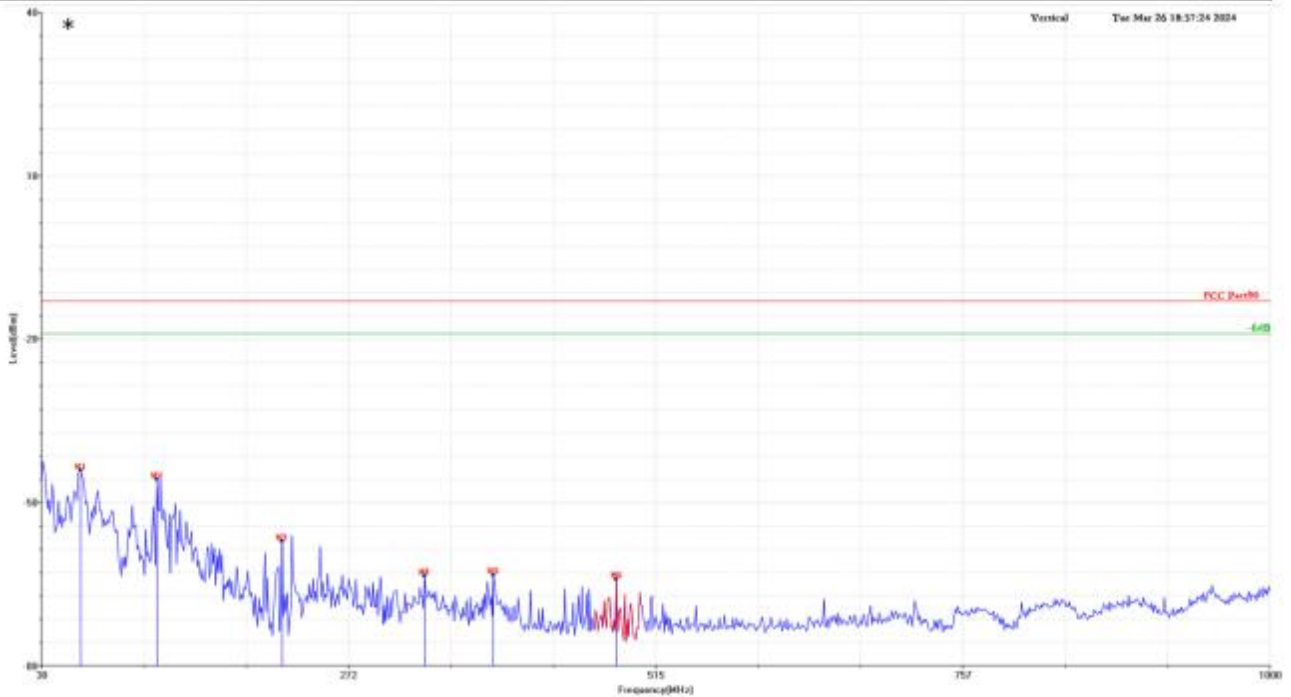


Test Summary Result

Frequency (MHz)	Read_Level (dBm)	Factor (dB)	Level (dBm)	Limit (dBm)	Margin (dB)	Table(o)	Pol/Phase
*37.76	-42.04	2.56	-39.48	-13.00	-26.48	0.00	Horizontal
121.18	-35.56	-14.12	-49.68	-13.00	-36.68	0.00	Horizontal
250.19	-43.28	-16.35	-59.63	-13.00	-46.63	0.00	Horizontal
386.96	-51.56	-14.82	-66.38	-13.00	-53.38	0.00	Horizontal
587.75	-61.37	-10.27	-71.64	-13.00	-58.64	0.00	Horizontal
718.70	-59.91	-8.52	-68.43	-13.00	-55.43	0.00	Horizontal

Note : The test worst case was marked with the " * " in front of frequency.

Test Mode	PS111	Test Channel	Channel 13
Frequency range	30MHz-1000MHz	Antenna	Vertical

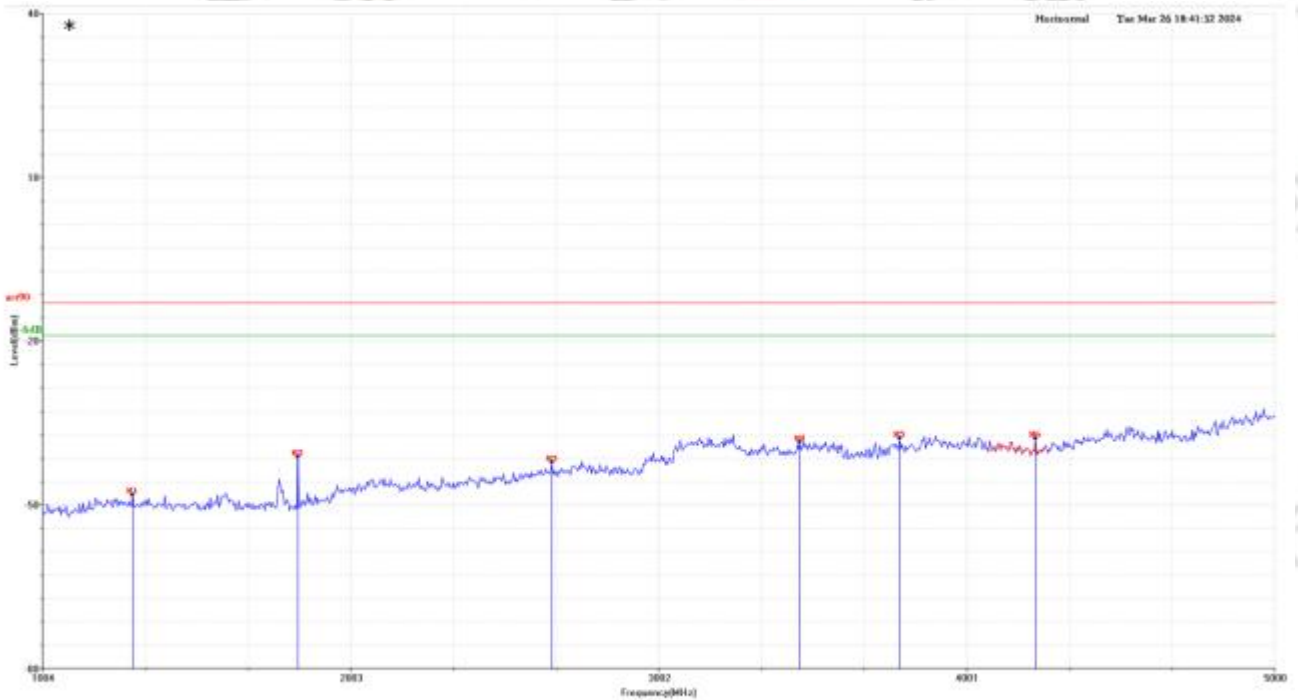


Test Summary Result

Frequency (MHz)	Read_Level (dBm)	Factor (dB)	Level (dBm)	Limit (dBm)	Margin (dB)	Table(o)	Pol/Phase
*61.04	-35.11	-9.02	-44.13	-13.00	-31.13	0.00	Vertical
121.18	-37.21	-8.54	-45.75	-13.00	-32.75	0.00	Vertical
220.12	-39.13	-17.99	-57.12	-13.00	-44.12	0.00	Vertical
332.64	-49.58	-13.93	-63.51	-13.00	-50.51	0.00	Vertical
386.96	-50.44	-12.95	-63.39	-13.00	-50.39	0.00	Vertical
483.96	-53.70	-10.43	-64.13	-13.00	-51.13	0.00	Vertical

Note : The test worse case was marked with the " * " in front of frequency.

Test Mode	PS111	Test Channel	Channel 13
Frequency range	1GHZ-5GHz	Antenna	Horizontal

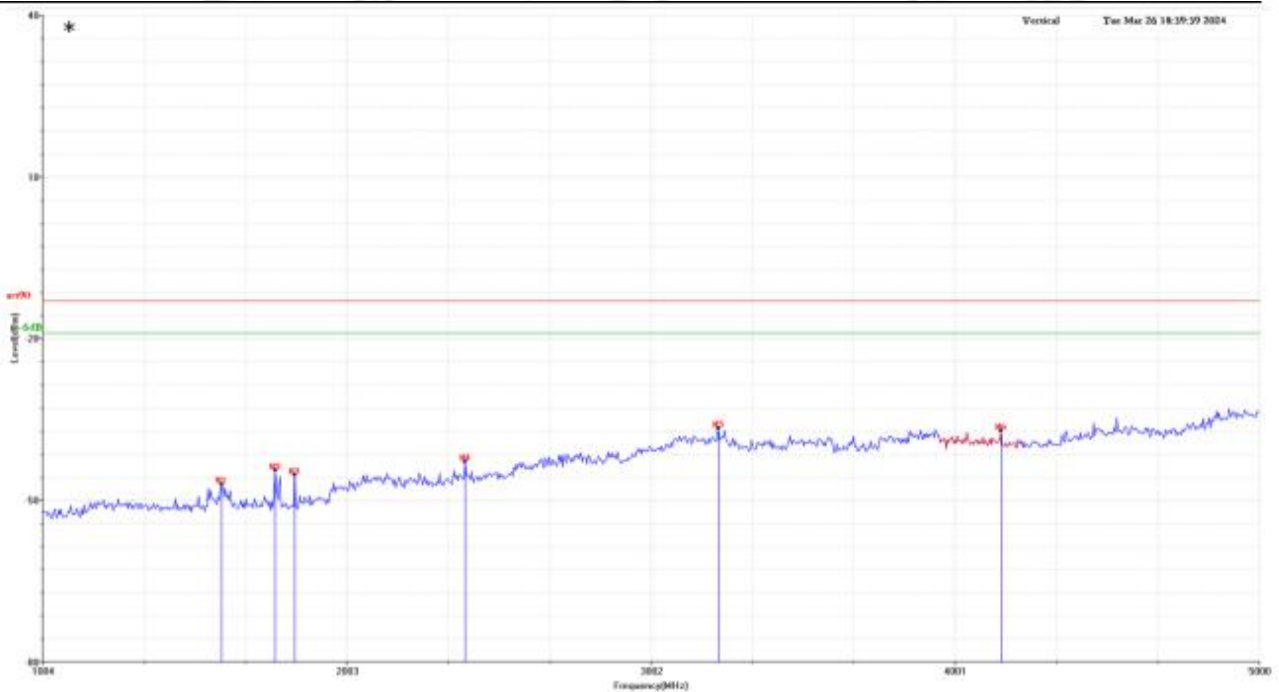


Test Summary Result

Frequency (MHz)	Read_Level (dBm)	Factor (dB)	Level (dBm)	Limit (dBm)	Margin (dB)	Table(o)	Pol/Phase
1296.00	-49.43	1.22	-48.21	-13.00	-35.21	0.00	Horizontal
1832.00	-41.61	0.33	-41.28	-13.00	-28.28	0.00	Horizontal
2656.00	-47.02	4.81	-42.21	-13.00	-29.21	0.00	Horizontal
3460.00	-48.26	9.73	-38.53	-13.00	-25.53	0.00	Horizontal
*3784.00	-48.88	11.07	-37.81	-13.00	-24.81	0.00	Horizontal
4224.00	-48.69	10.84	-37.85	-13.00	-24.85	0.00	Horizontal

Note : The test worst case was marked with the " * " in front of frequency.

Test Mode	PS111	Test Channel	Channel 13
Frequency range	1GHZ-5GHz	Antenna	Vertical

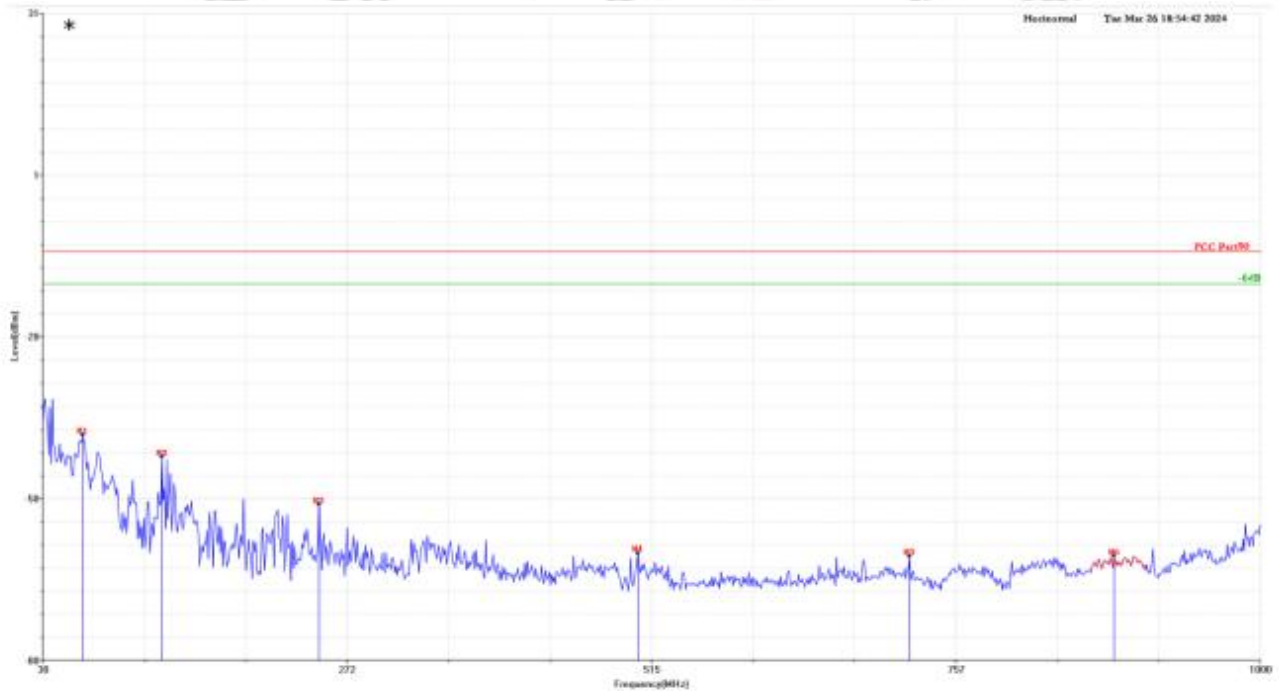


Test Summary Result

Frequency (MHz)	Read_Level (dBm)	Factor (dB)	Level (dBm)	Limit (dBm)	Margin (dB)	Table(o)	Pol/Phase
1592.00	-46.63	-0.44	-47.07	-13.00	-34.07	0.00	Vertical
1768.00	-43.79	-0.63	-44.42	-13.00	-31.42	0.00	Vertical
1832.00	-44.69	-0.63	-45.32	-13.00	-32.32	0.00	Vertical
2392.00	-46.19	3.34	-42.85	-13.00	-29.85	0.00	Vertical
*3224.00	-46.57	9.91	-36.66	-13.00	-23.66	0.00	Vertical
4152.00	-48.35	11.25	-37.10	-13.00	-24.10	0.00	Vertical

Note : The test worse case was marked with the " * " in front of frequency.

Test Mode	T21	Test Channel	Low Channel
Frequency range	30MHz-1000MHz	Antenna	Horizontal

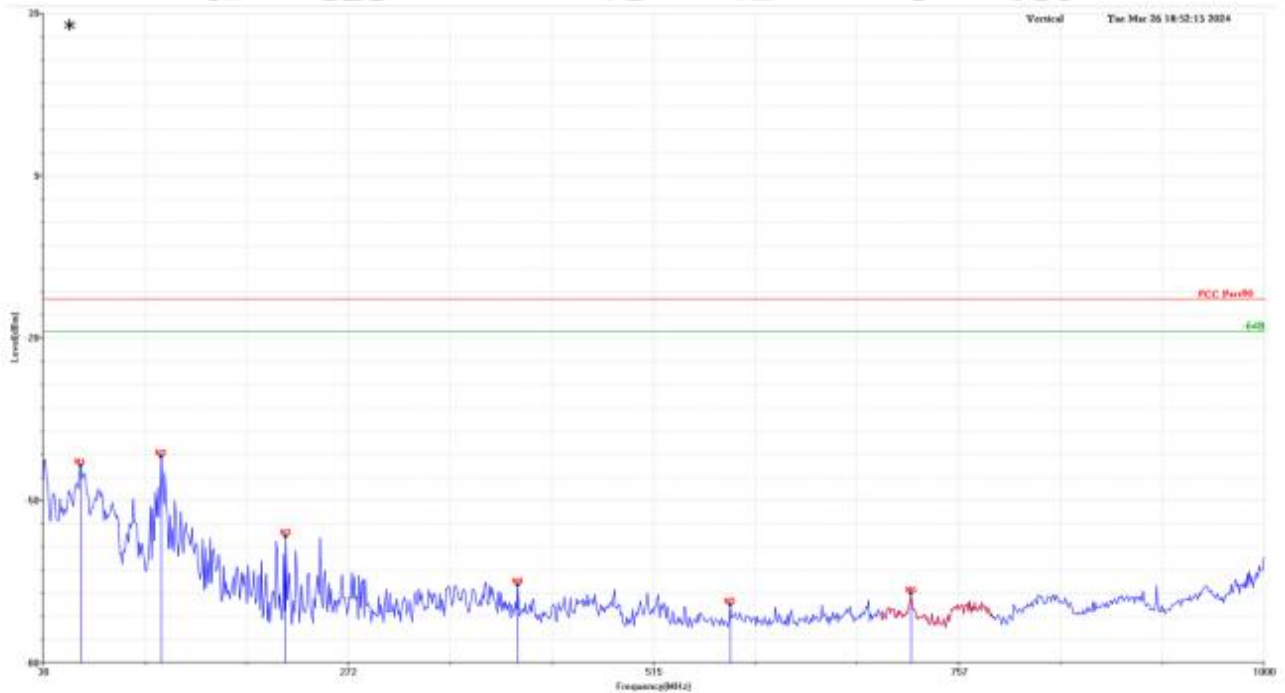


Test Summary Result

Frequency (MHz)	Read_Level (dBm)	Factor (dB)	Level (dBm)	Limit (dBm)	Margin (dB)	Table(o)	Pol/Phase
*62.01	-34.82	-12.17	-46.99	-13.00	-33.99	0.00	Horizontal
125.06	-37.25	-13.83	-51.08	-13.00	-38.08	0.00	Horizontal
250.19	-43.52	-16.35	-59.87	-13.00	-46.87	0.00	Horizontal
504.33	-58.12	-10.85	-68.97	-13.00	-55.97	0.00	Horizontal
720.64	-60.97	-8.52	-69.49	-13.00	-56.49	0.00	Horizontal
883.60	-64.15	-5.29	-69.44	-13.00	-56.44	0.00	Horizontal

Note : The test worst case was marked with the " * " in front of frequency.

Test Mode	T21	Test Channel	Low Channel
Frequency range	30MHz-1000MHz	Antenna	Vertical

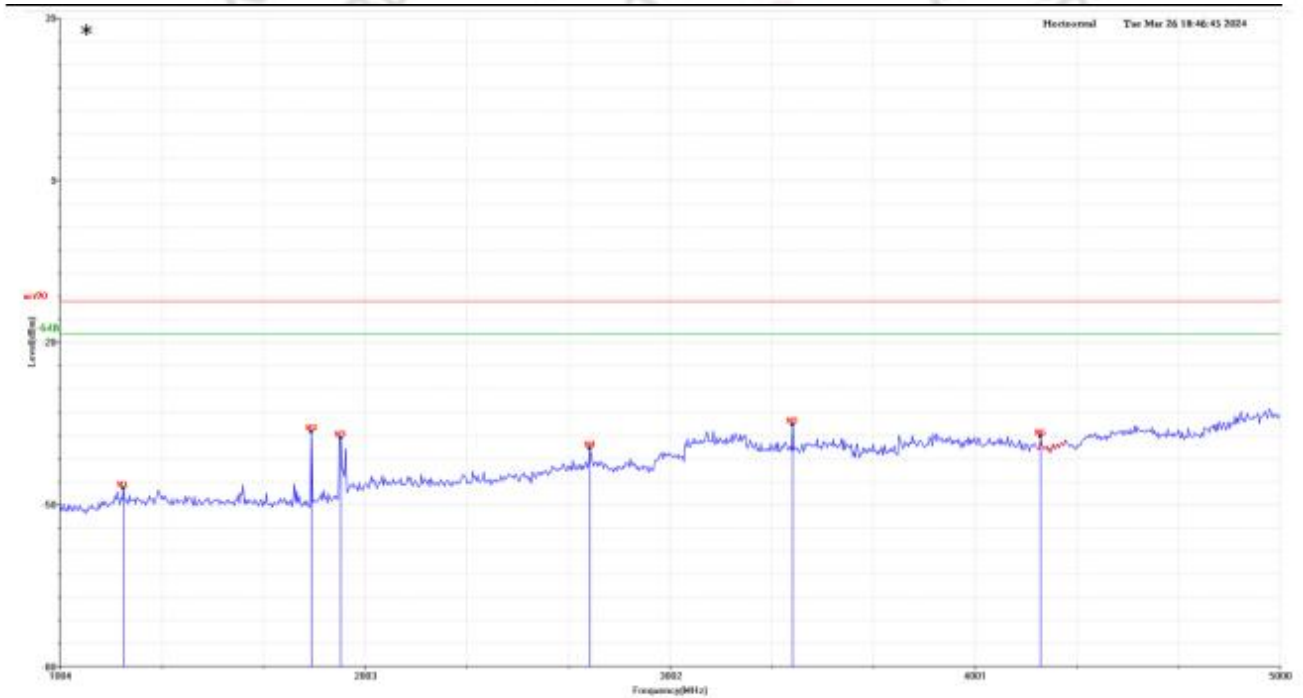


Test Summary Result

Frequency (MHz)	Read_Level (dBm)	Factor (dB)	Level (dBm)	Limit (dBm)	Margin (dB)	Table(o)	Pol/Phase
60.07	-35.24	-8.64	-43.88	-13.00	-30.88	0.00	Vertical
*124.09	-33.67	-8.52	-42.19	-13.00	-29.19	0.00	Vertical
223.03	-39.40	-17.54	-56.94	-13.00	-43.94	0.00	Vertical
407.33	-54.27	-11.68	-65.95	-13.00	-52.95	0.00	Vertical
576.11	-61.24	-8.31	-69.55	-13.00	-56.55	0.00	Vertical
719.67	-60.83	-6.63	-67.46	-13.00	-54.46	0.00	Vertical

Note : The test worse case was marked with the " * " in front of frequency.

Test Mode	T21	Test Channel	Low Channel
Frequency range	1GHZ-5GHz	Antenna	Horizontal

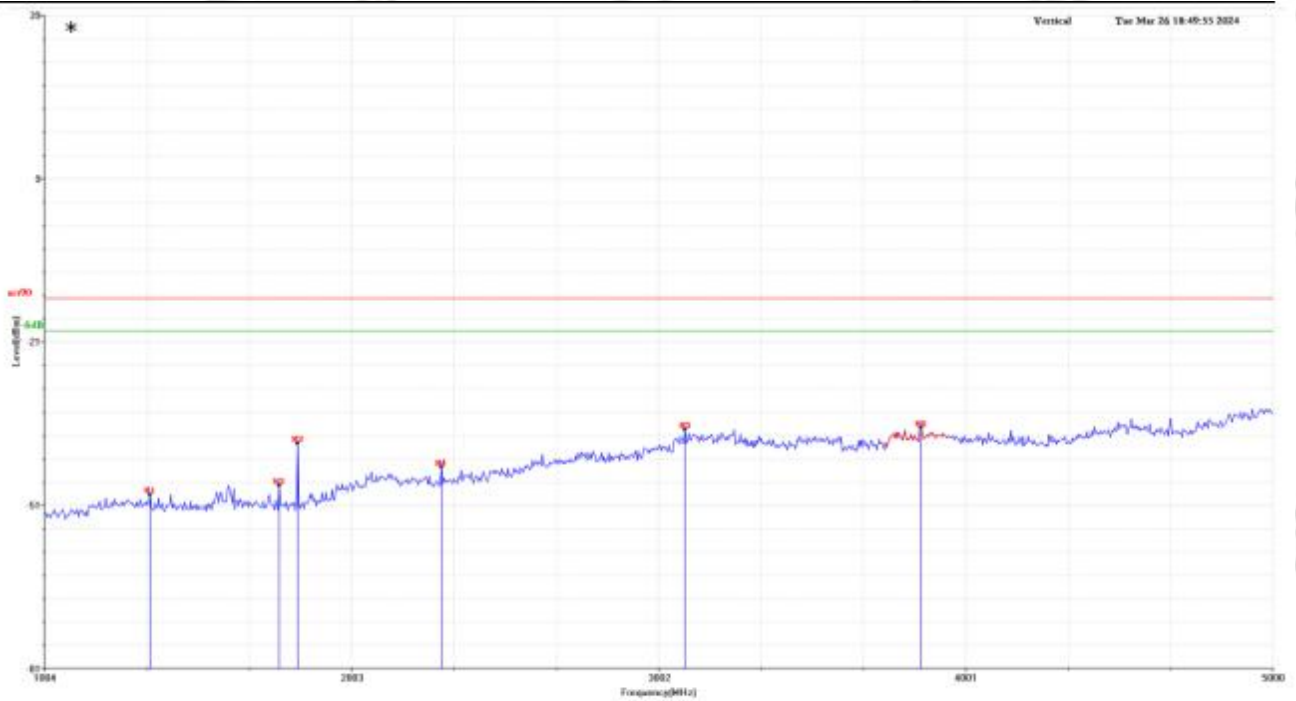


Test Summary Result

Frequency (MHz)	Read_Level (dBm)	Factor (dB)	Level (dBm)	Limit (dBm)	Margin (dB)	Table(o)	Pol/Phase
1212.00	-48.94	1.30	-47.64	-13.00	-34.64	0.00	Horizontal
1828.00	-37.51	0.33	-37.18	-13.00	-24.18	0.00	Horizontal
1924.00	-39.30	0.95	-38.35	-13.00	-25.35	0.00	Horizontal
2740.00	-45.07	4.81	-40.26	-13.00	-27.26	0.00	Horizontal
*3404.00	-44.69	8.83	-35.86	-13.00	-22.86	0.00	Horizontal
4216.00	-48.86	10.84	-38.02	-13.00	-25.02	0.00	Horizontal

Note : The test worse case was marked with the " * " in front of frequency.

Test Mode	T21	Test Channel	Low Channel
Frequency range	1GHZ-5GHz	Antenna	Vertical

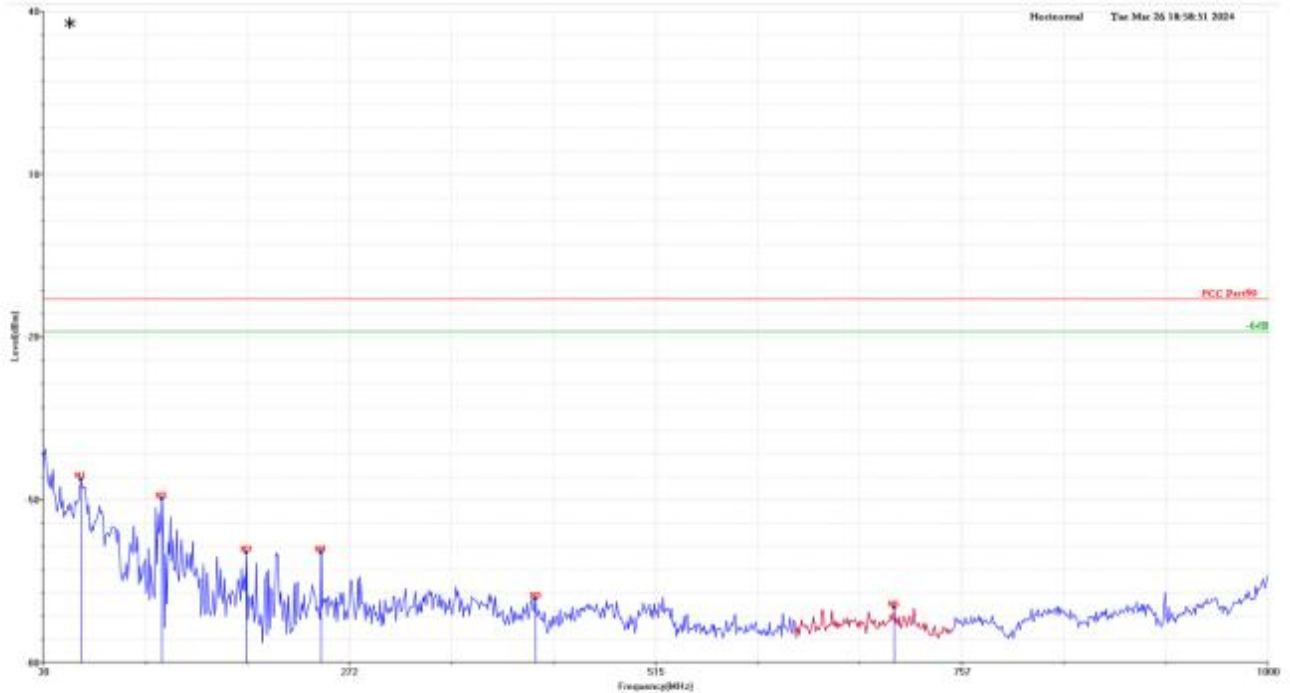


Test Summary Result

Frequency (MHz)	Read_Level (dBm)	Factor (dB)	Level (dBm)	Limit (dBm)	Margin (dB)	Table(o)	Pol/Phase
1348.00	-49.36	0.27	-49.09	-13.00	-36.09	0.00	Vertical
1768.00	-46.77	-0.63	-47.40	-13.00	-34.40	0.00	Vertical
1828.00	-39.03	-0.63	-39.66	-13.00	-26.66	0.00	Vertical
2296.00	-46.94	2.93	-44.01	-13.00	-31.01	0.00	Vertical
3088.00	-46.66	9.54	-37.12	-13.00	-24.12	0.00	Vertical
*3856.00	-49.82	13.02	-36.80	-13.00	-23.80	0.00	Vertical

Note : The test worst case was marked with the " * " in front of frequency.

Test Mode	T21	Test Channel	High Channel
Frequency range	30MHz-1000MHz	Antenna	Horizontal

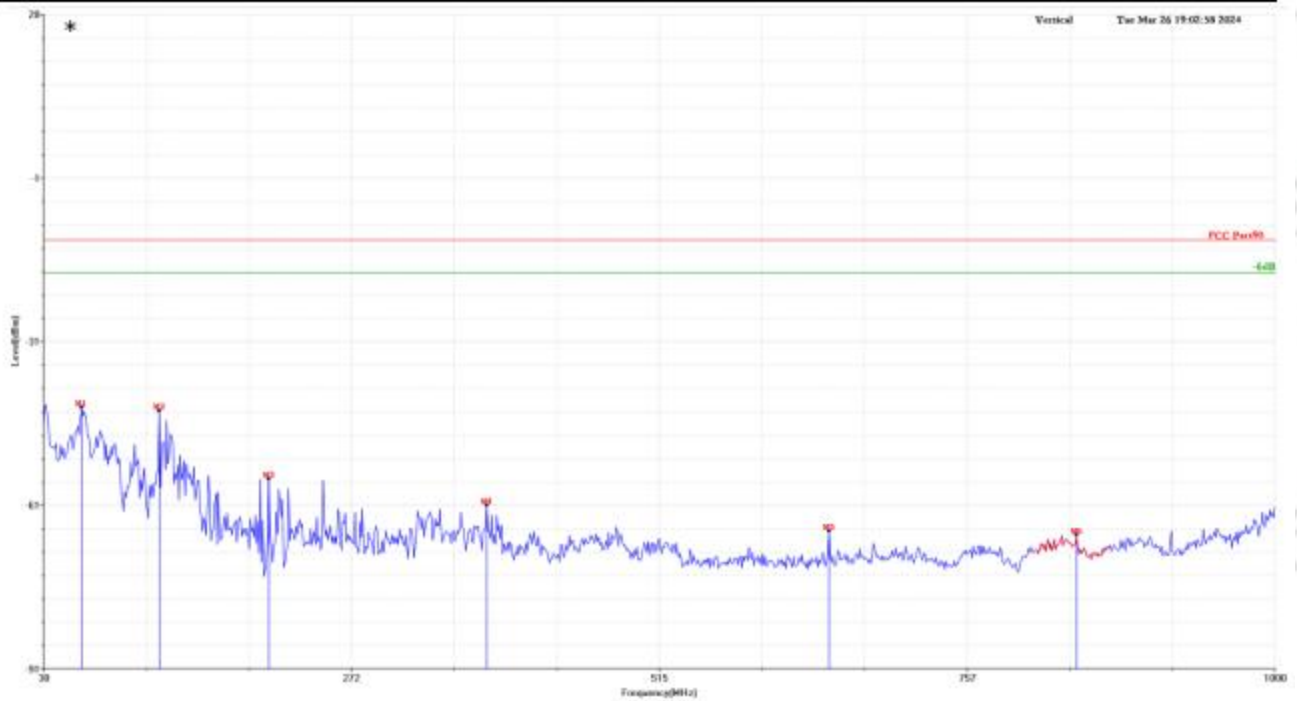


Test Summary Result

Frequency (MHz)	Read_Level (dBm)	Factor (dB)	Level (dBm)	Limit (dBm)	Margin (dB)	Table(o)	Pol/Phase
*60.07	-34.76	-11.56	-46.32	-13.00	-33.32	0.00	Horizontal
124.09	-36.06	-13.83	-49.89	-13.00	-36.89	0.00	Horizontal
191.02	-40.86	-18.92	-59.78	-13.00	-46.78	0.00	Horizontal
250.19	-43.47	-16.35	-59.82	-13.00	-46.82	0.00	Horizontal
419.94	-54.79	-13.56	-68.35	-13.00	-55.35	0.00	Horizontal
704.15	-61.40	-8.52	-69.92	-13.00	-56.92	0.00	Horizontal

Note : The test worst case was marked with the " * " in front of frequency.

Test Mode	T21	Test Channel	High Channel
Frequency range	30MHz-1000MHz	Antenna	Vertical

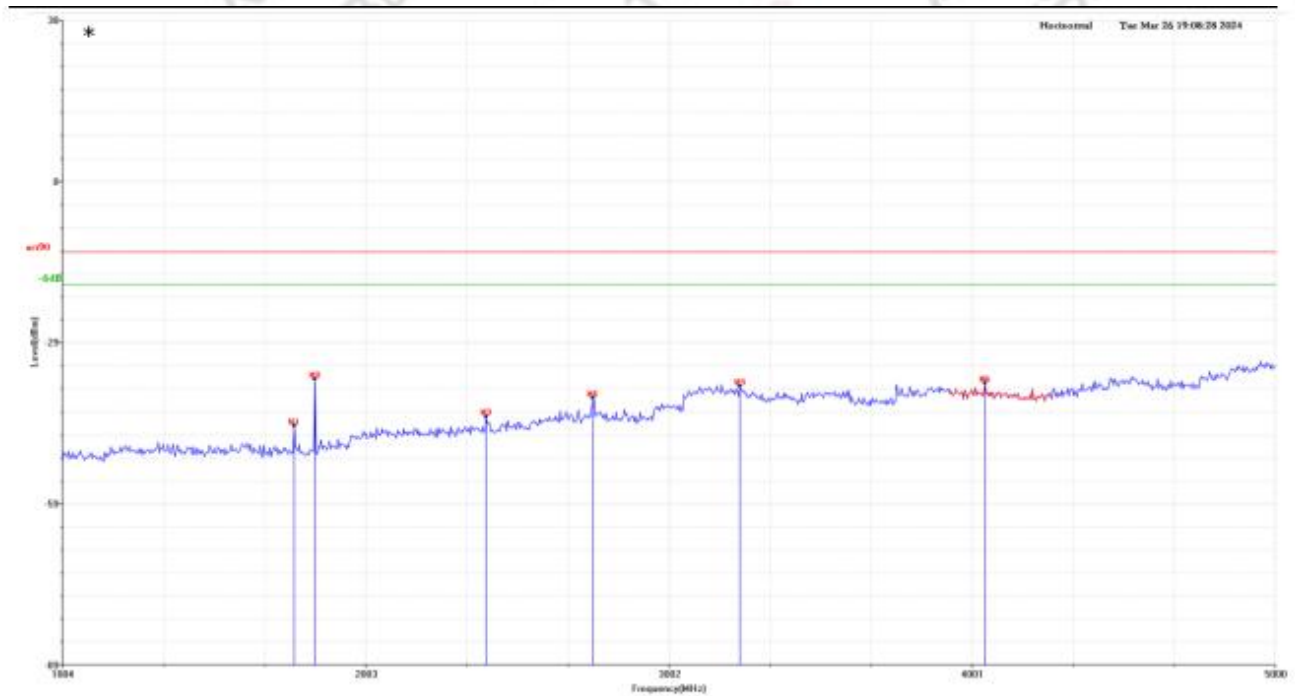


Test Summary Result

Frequency (MHz)	Read_Level (dBm)	Factor (dB)	Level (dBm)	Limit (dBm)	Margin (dB)	Table(o)	PoI/Phase
*60.07	-35.04	-8.64	-43.68	-13.00	-30.68	0.00	Vertical
121.18	-35.80	-8.54	-44.34	-13.00	-31.34	0.00	Vertical
207.51	-38.72	-18.07	-56.79	-13.00	-43.79	0.00	Vertical
379.20	-48.69	-12.95	-61.64	-13.00	-48.64	0.00	Vertical
648.86	-58.28	-8.08	-66.36	-13.00	-53.36	0.00	Vertical
843.83	-63.34	-3.74	-67.08	-13.00	-54.08	0.00	Vertical

Note : The test worst case was marked with the " * " in front of frequency.

Test Mode	T21	Test Channel	High Channel
Frequency range	1GHZ-5GHz	Antenna	Horizontal

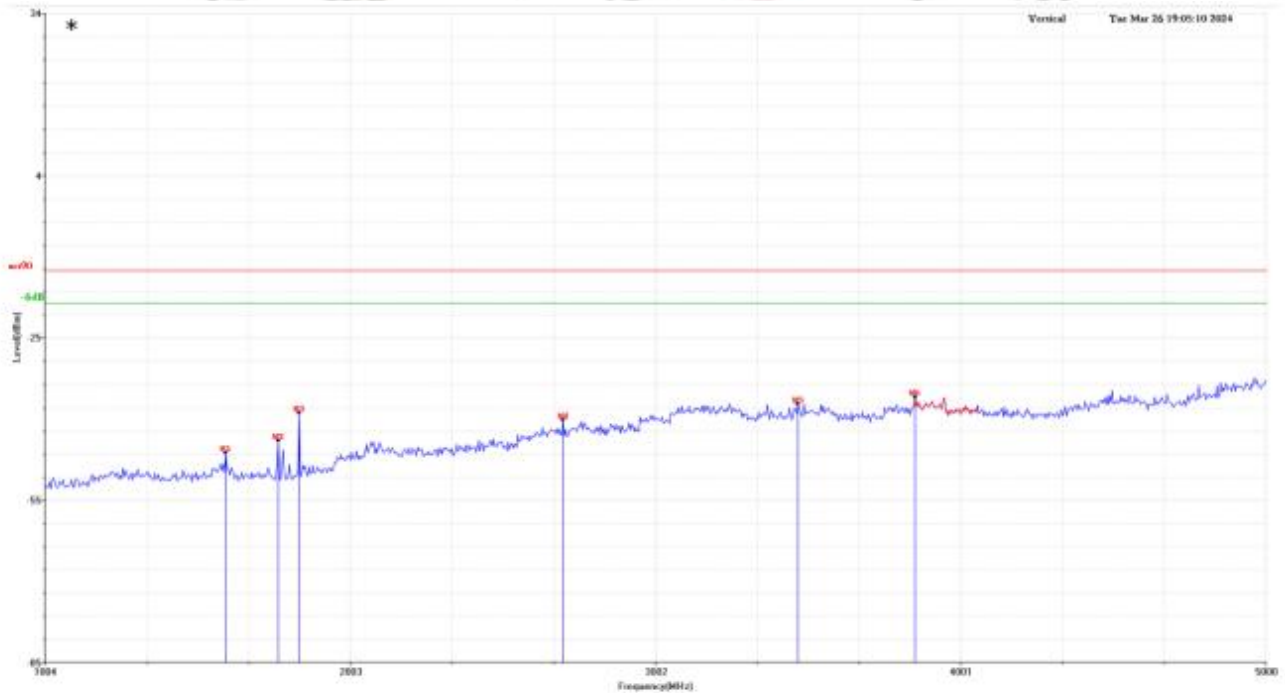


Test Summary Result

Frequency (MHz)	Read_Level (dBm)	Factor (dB)	Level (dBm)	Limit (dBm)	Margin (dB)	Table(o)	Pol/Phase
1768.00	-45.62	0.33	-45.29	-13.00	-32.29	0.00	Horizontal
*1836.00	-36.95	0.33	-36.62	-13.00	-23.62	0.00	Horizontal
2400.00	-46.87	3.29	-43.58	-13.00	-30.58	0.00	Horizontal
2752.00	-45.22	5.12	-40.10	-13.00	-27.10	0.00	Horizontal
3236.00	-47.71	9.81	-37.90	-13.00	-24.90	0.00	Horizontal
4044.00	-49.08	11.75	-37.33	-13.00	-24.33	0.00	Horizontal

Note : The test worse case was marked with the " * " in front of frequency.

Test Mode	T21	Test Channel	High Channel
Frequency range	1GHZ-5GHz	Antenna	Vertical



Test Summary Result

Frequency (MHz)	Read_Level (dBm)	Factor (dB)	Level (dBm)	Limit (dBm)	Margin (dB)	Table(o)	Pol/Phase
1596.00	-46.23	-0.44	-46.67	-13.00	-33.67	0.00	Vertical
1768.00	-43.76	-0.63	-44.39	-13.00	-31.39	0.00	Vertical
1836.00	-38.63	-0.63	-39.26	-13.00	-26.26	0.00	Vertical
2700.00	-46.25	5.69	-40.56	-13.00	-27.56	0.00	Vertical
3468.00	-47.69	10.09	-37.60	-13.00	-24.60	0.00	Vertical
*3852.00	-49.41	13.02	-36.39	-13.00	-23.39	0.00	Vertical

Note : The test worse case was marked with the " * " in front of frequency.

*****END OF APPENDIX B*****