

buzzpi odtechs.com
2016 Nov 18, V1

DIGI PRO SX
MODEL: XBP9X
FCC ID: MCO-XBP9X
XBP9X-DMRS-
KAY9X-001-R9VD
412669AA
SN2: 100727AF

PN: 500184-04
REV: D
NO: 142008
REV: 1831
MADE IN THAILAND

3.3V
MAX1
SEE REF
GUIDE

680
AFK
836

HO01
02u

HO01
02u

GPIO
CTRL

DIO2
DIO1

DIO2

DIO1

DIO2

DIO1

DIO2

DIO1

DIO2

DIO1

DIO2

DIO1

DIO2

DIO1

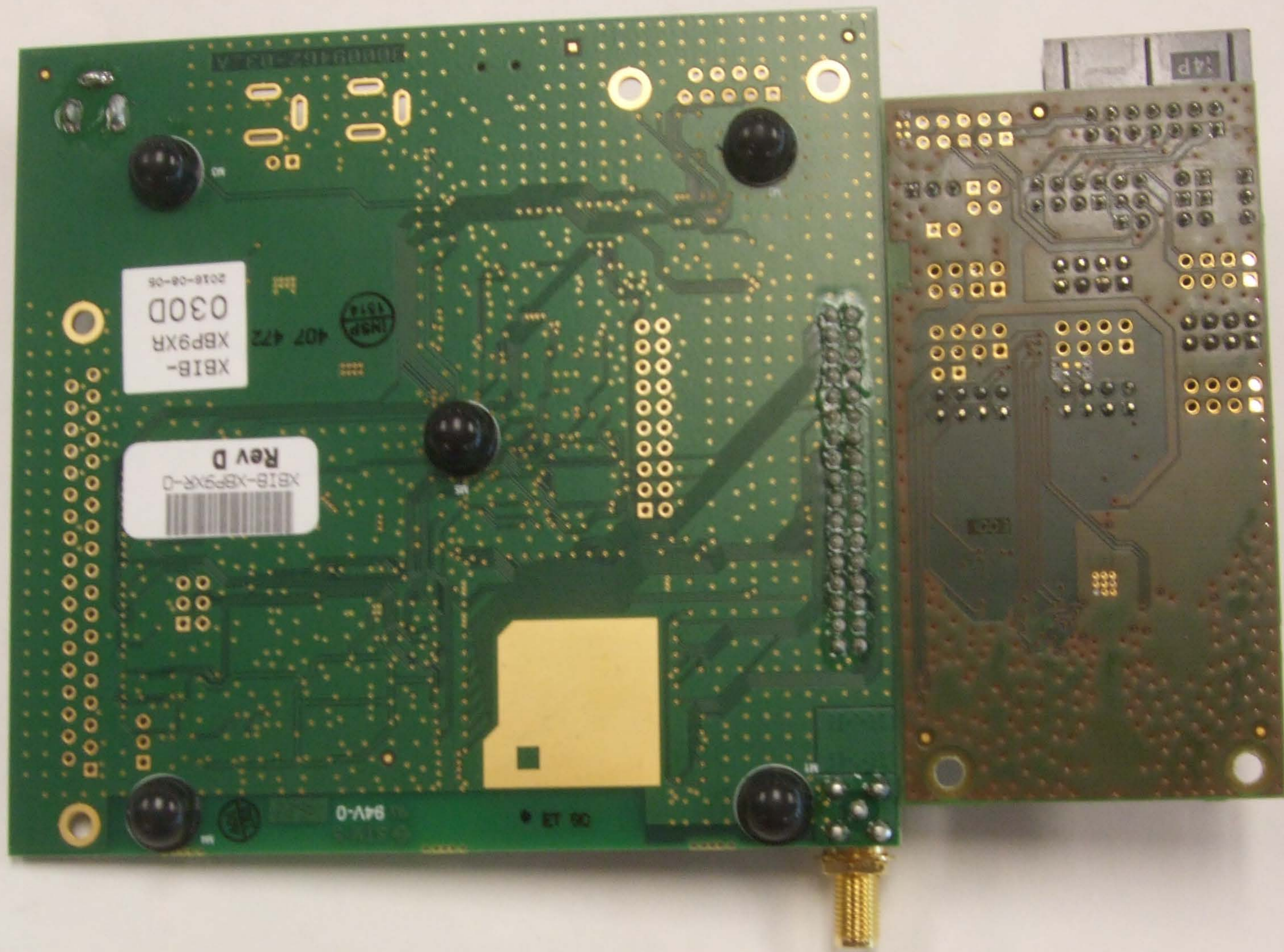
DIO2

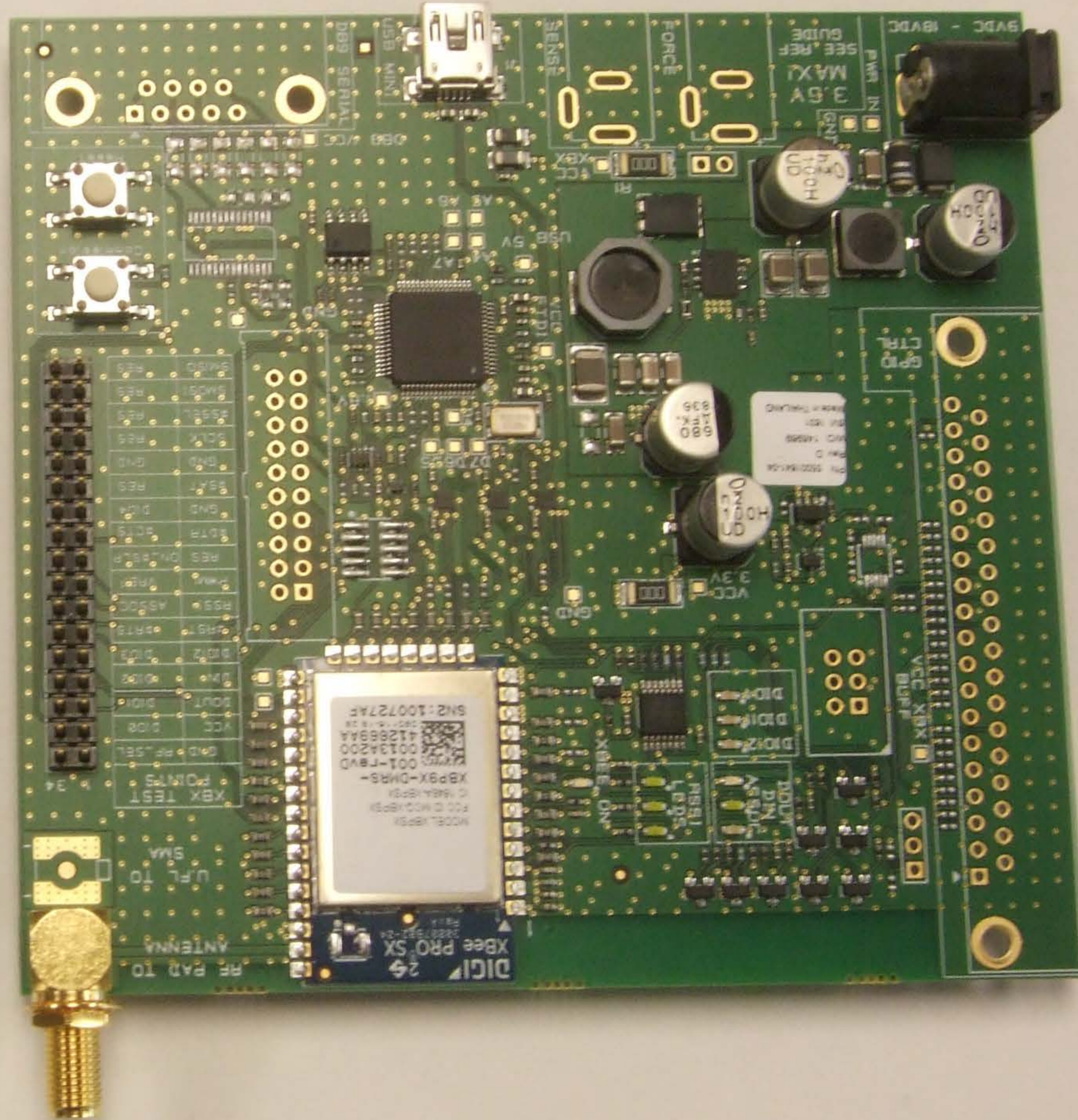
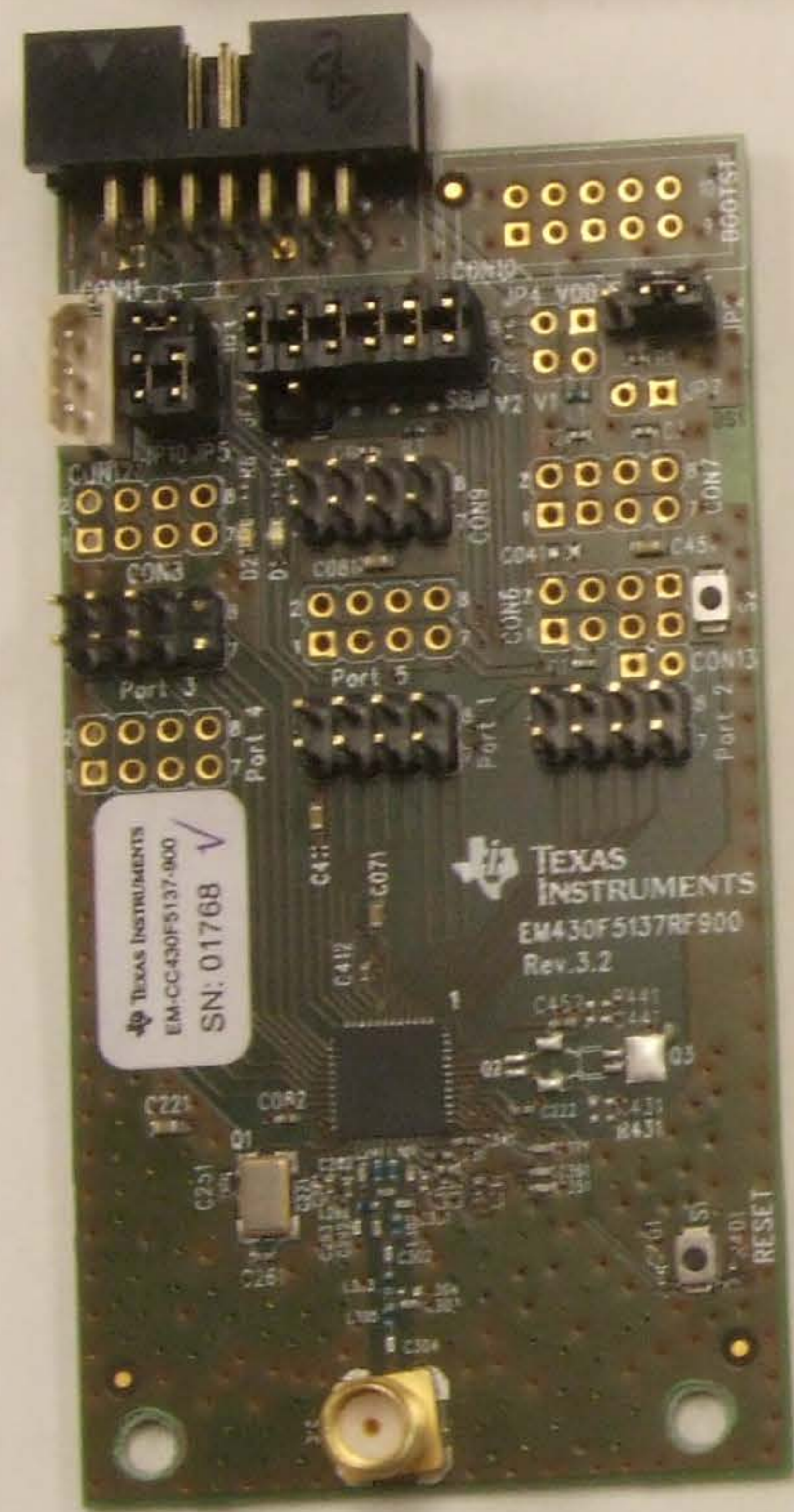
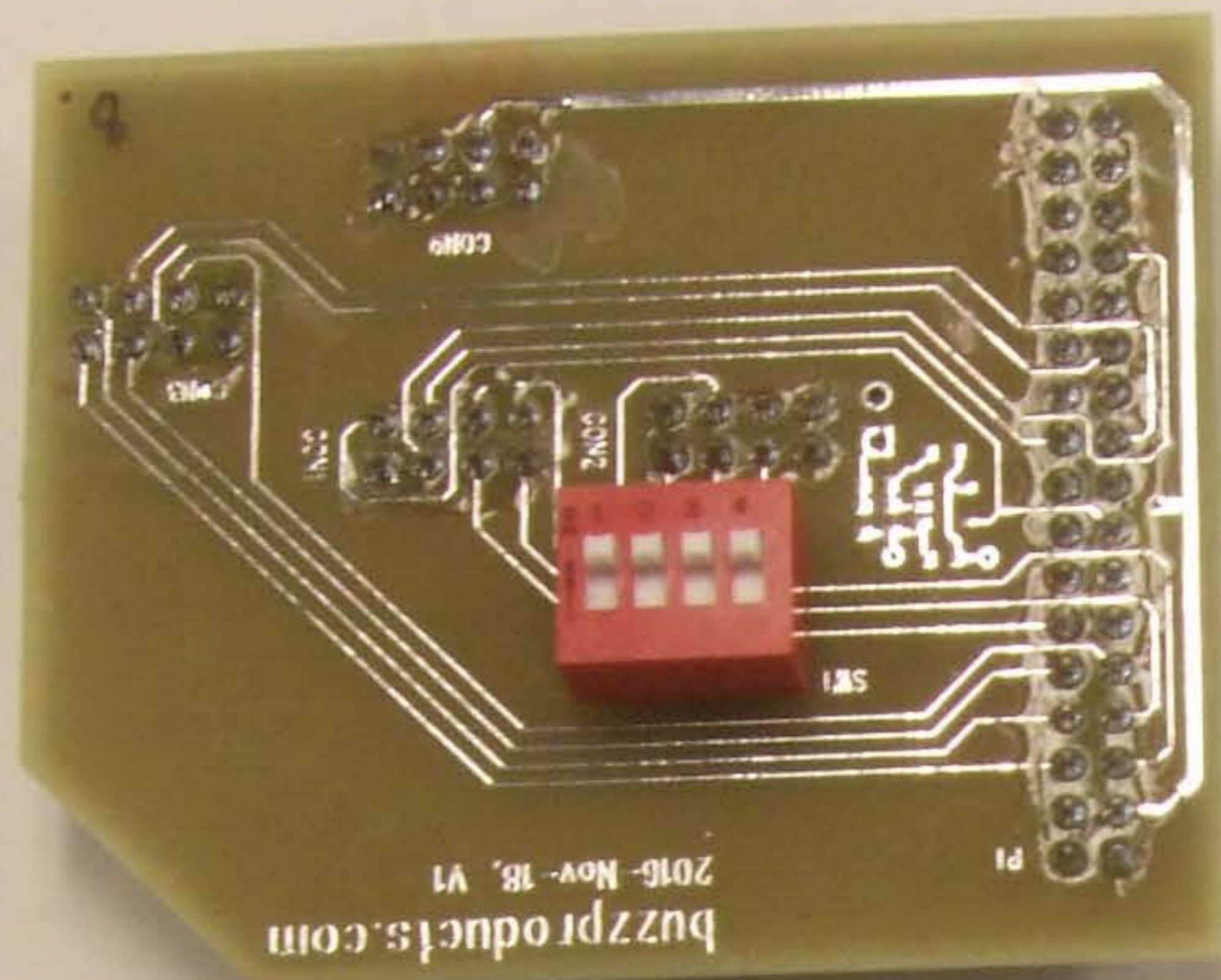
DIO1

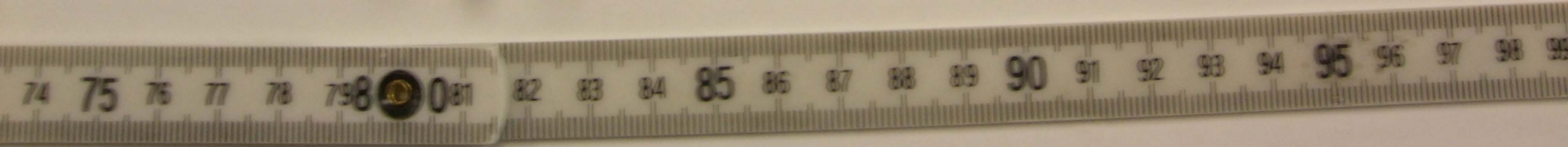
DIO2

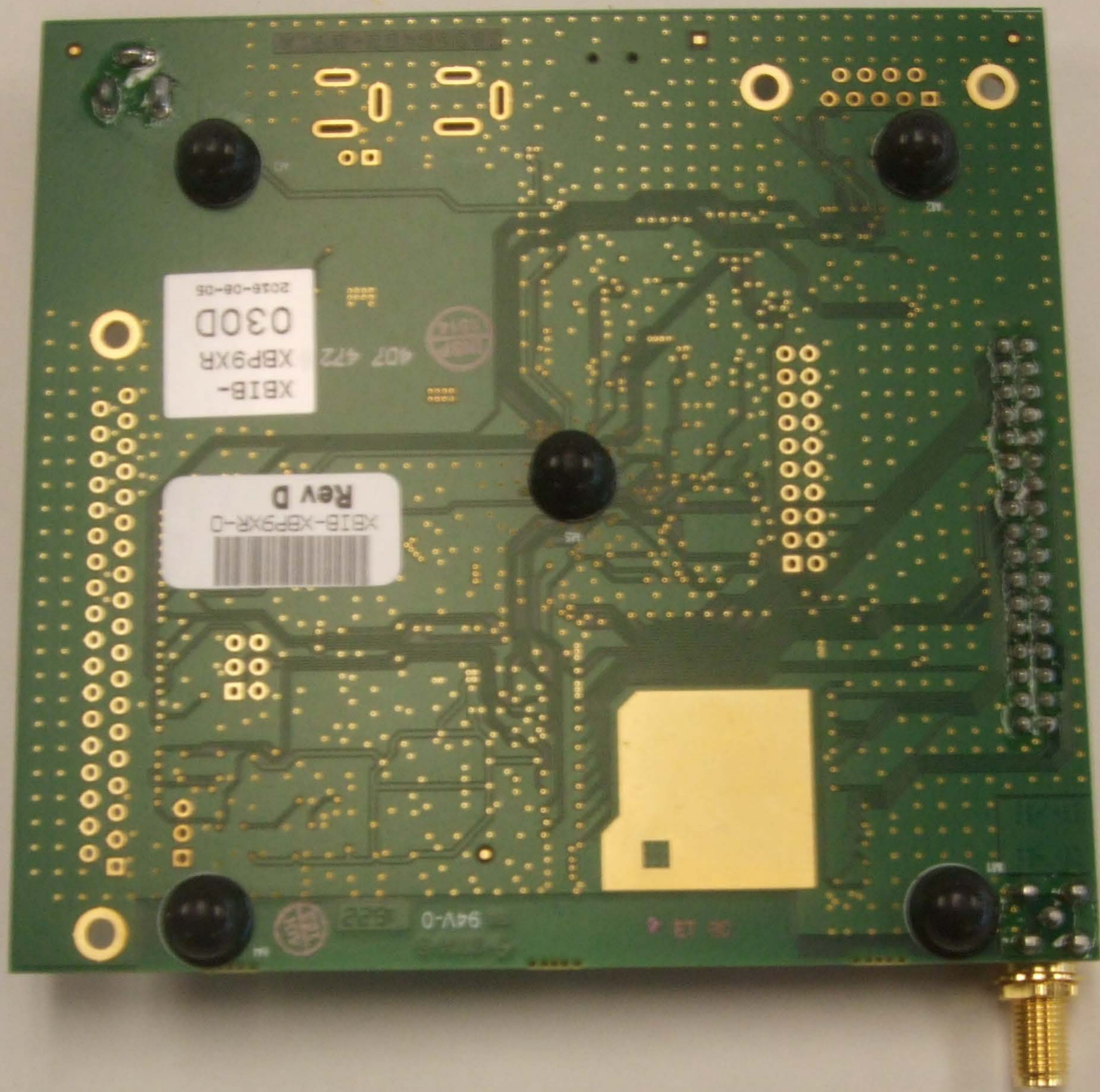
DIO1

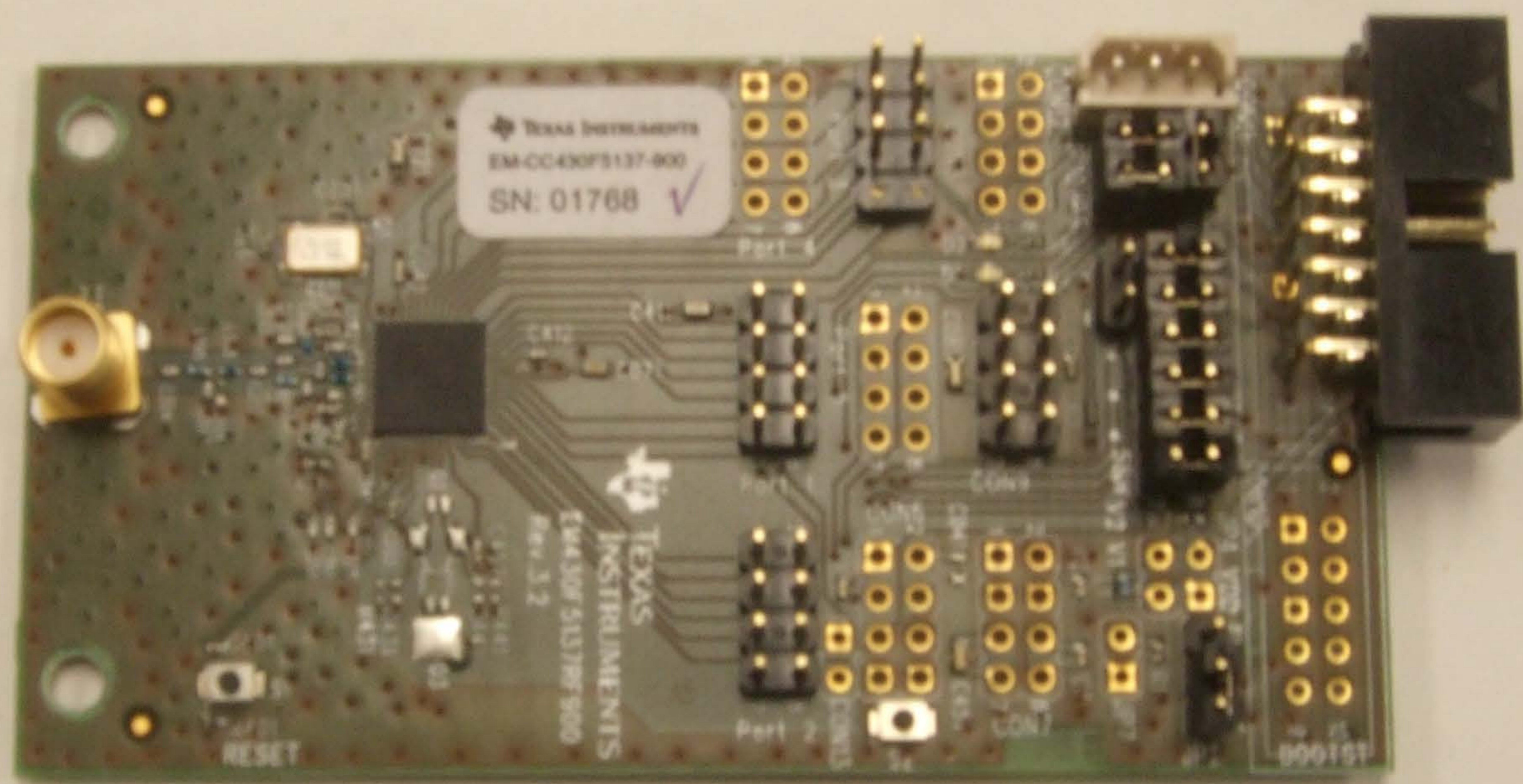
DIO2











TEXAS INSTRUMENTS
EM-CC430F5137-000
SN: 01768 ✓

TEXAS INSTRUMENTS
EM-CC430F5137-000
Rev. 3.2

RESET

Port 1

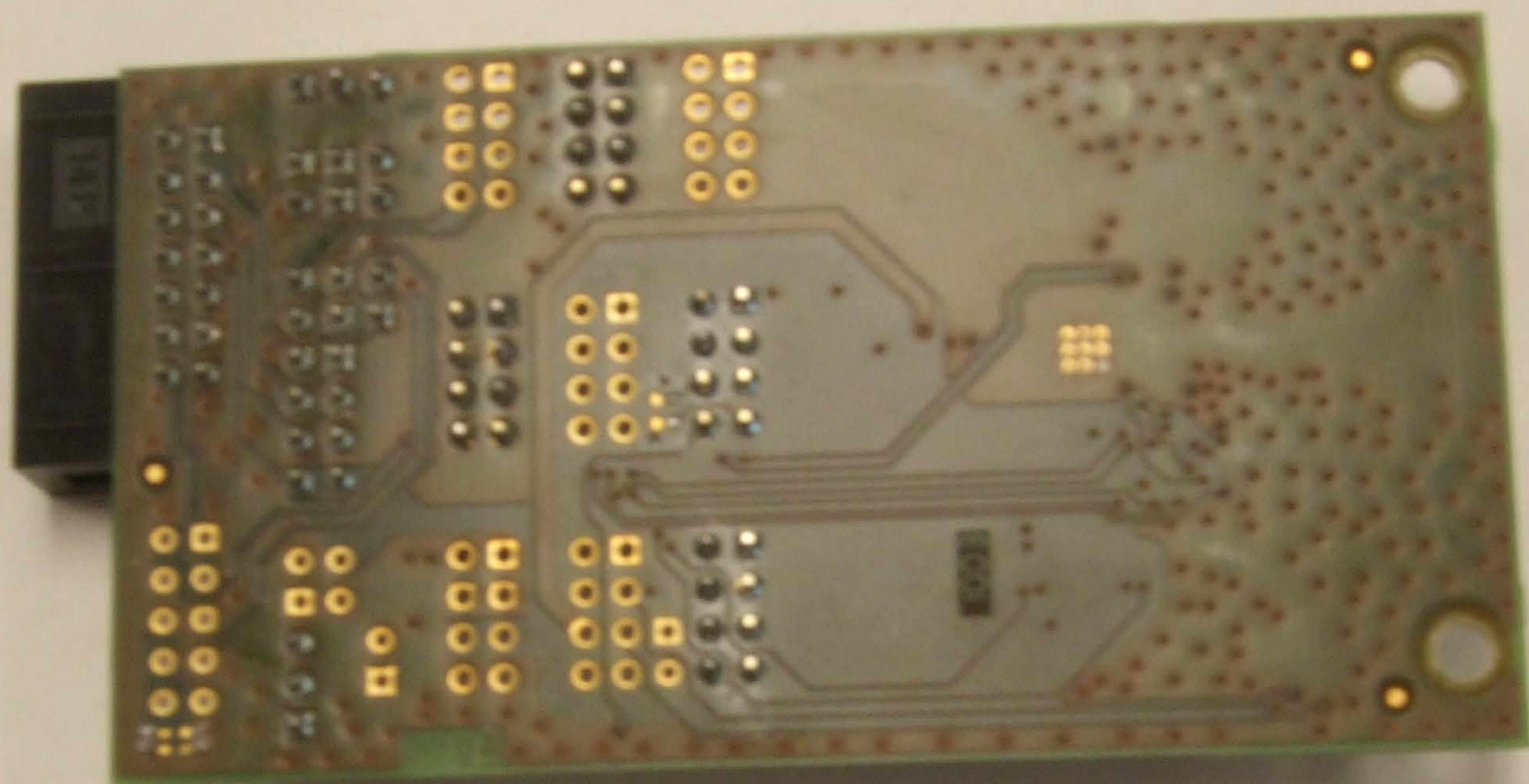
Port 2

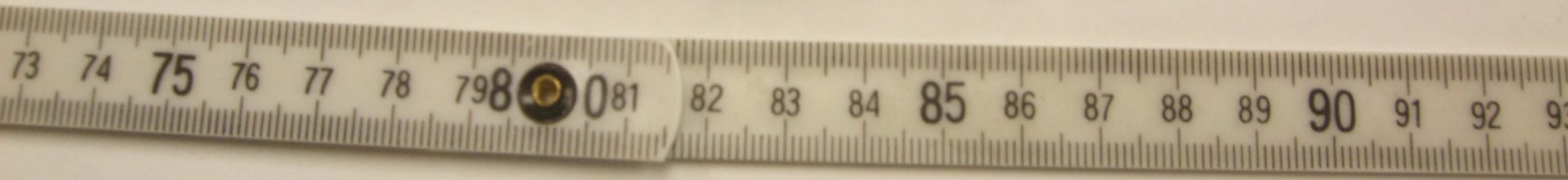
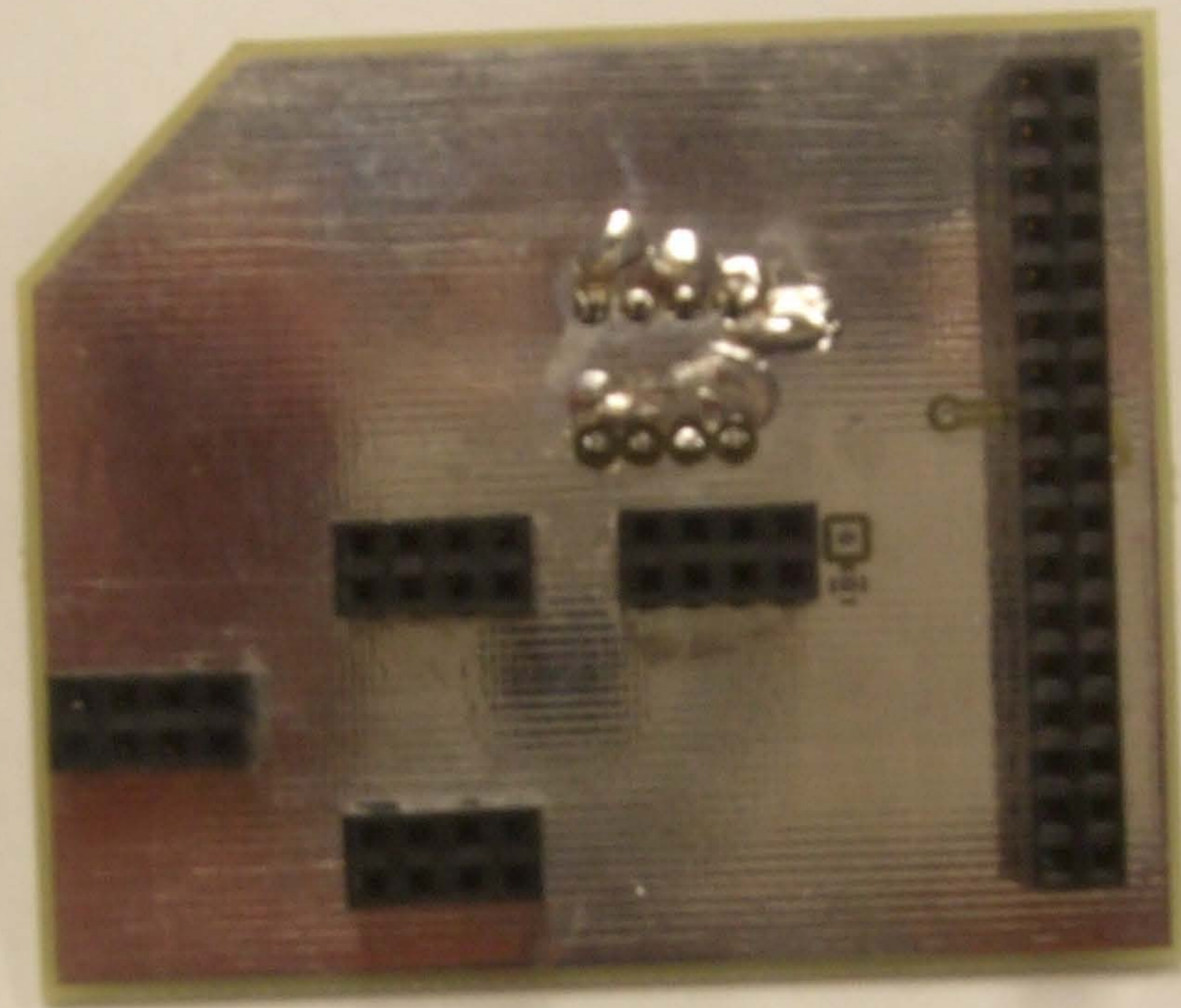
CON3

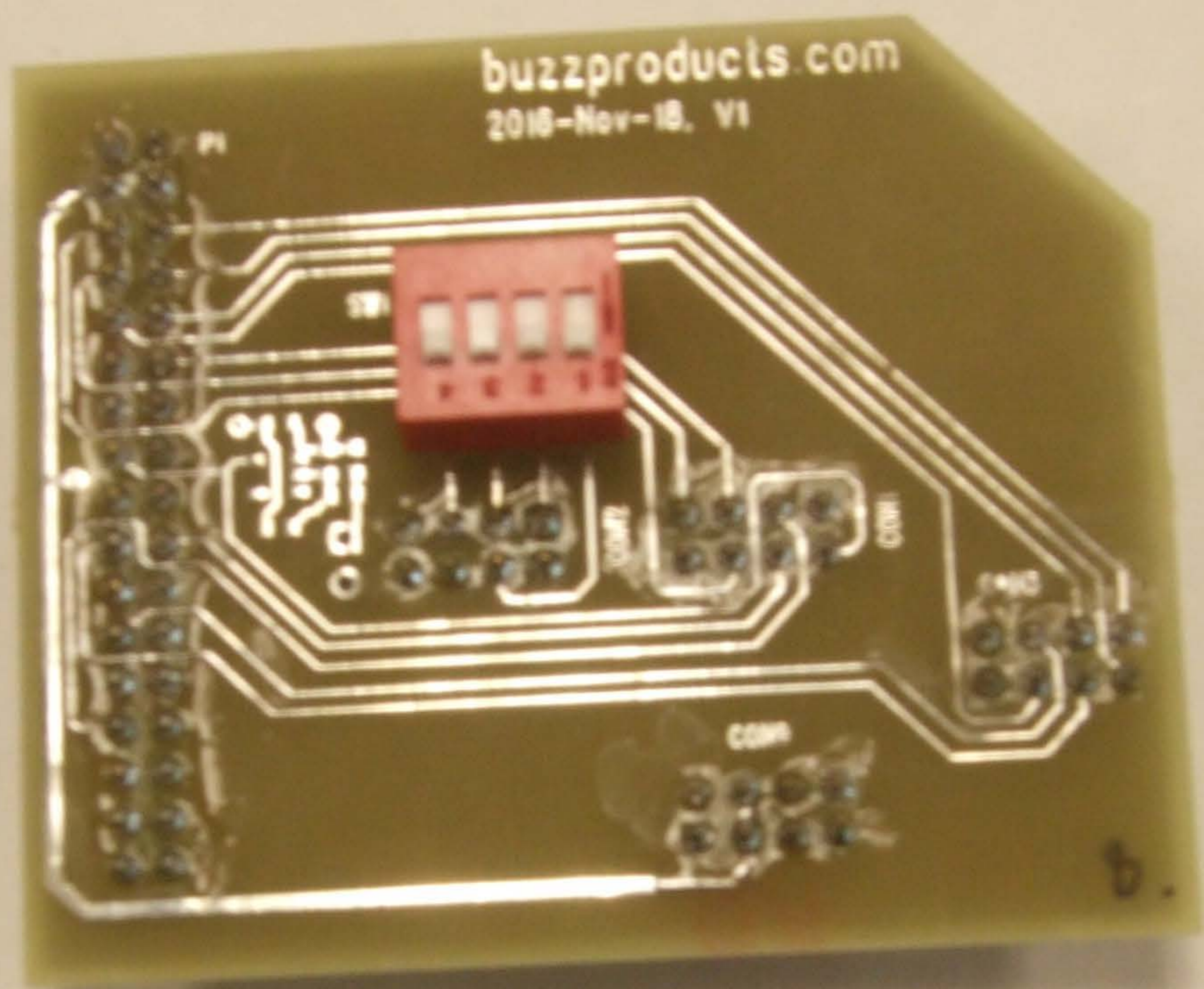
CON4

CON7

000151







buzzproducts.com
2018-Nov-18, V1

