

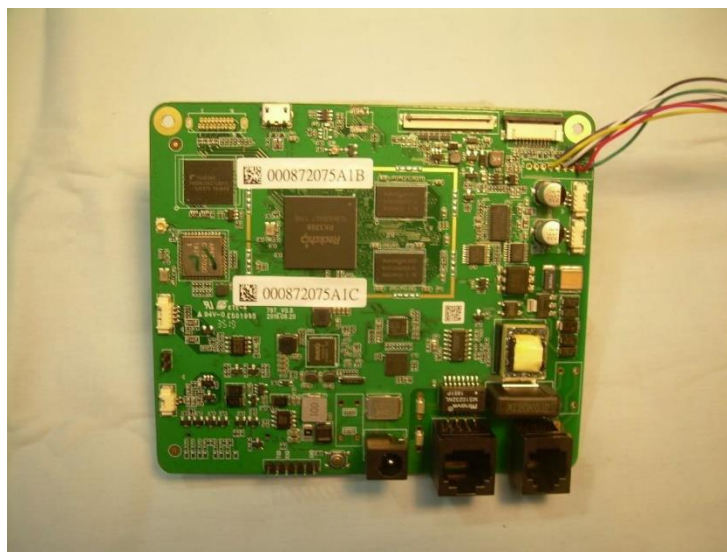
Internal Photographs



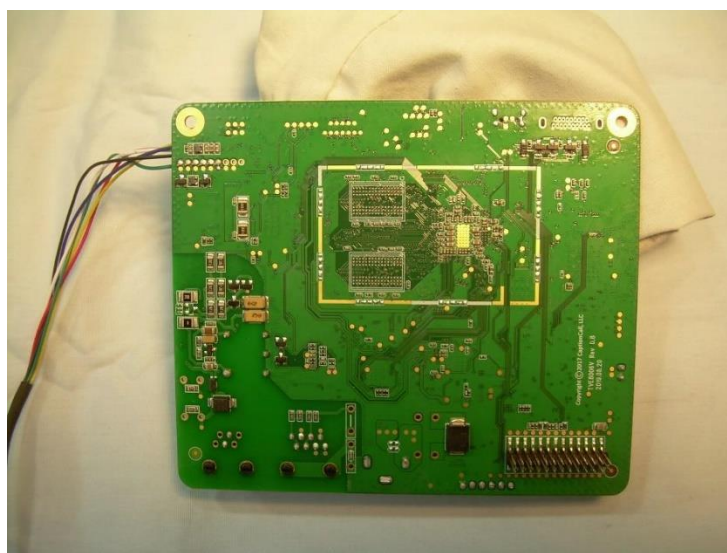
Photograph 1 – Top View of the Keypad PCB



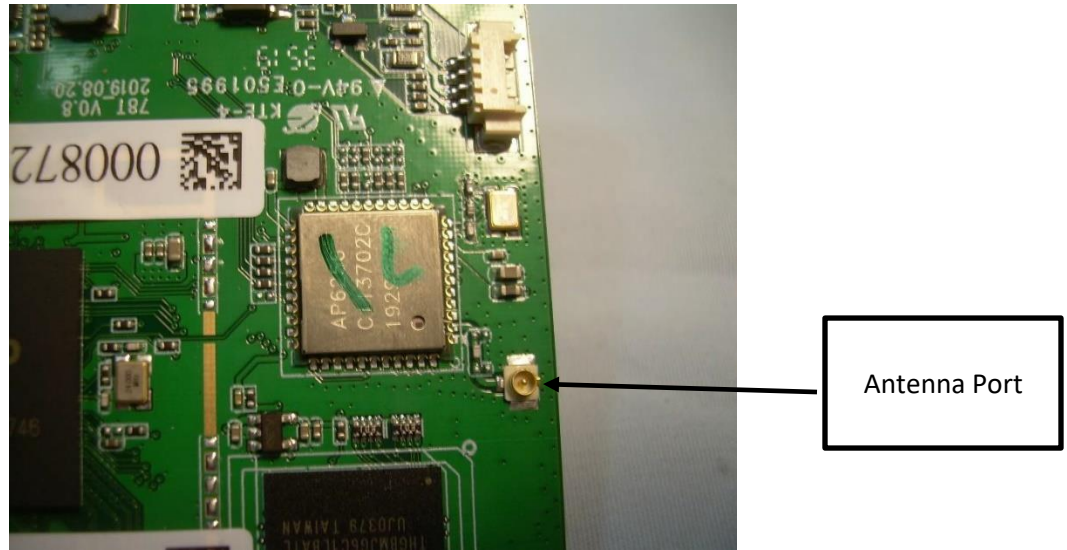
Photograph 2 – View of the Bottom Side of the Keypad PCB



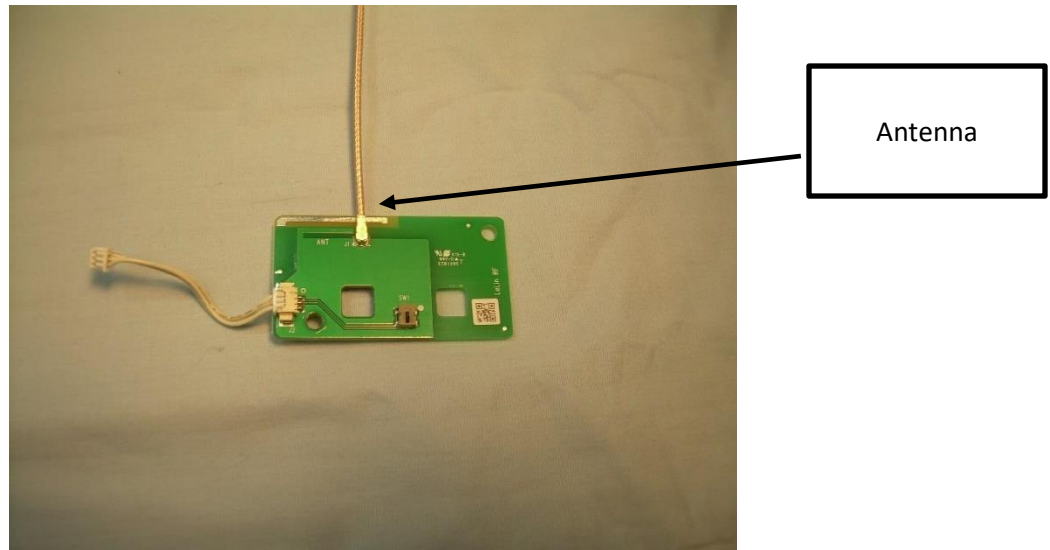
Photograph 3 – Front View of the Main PCB



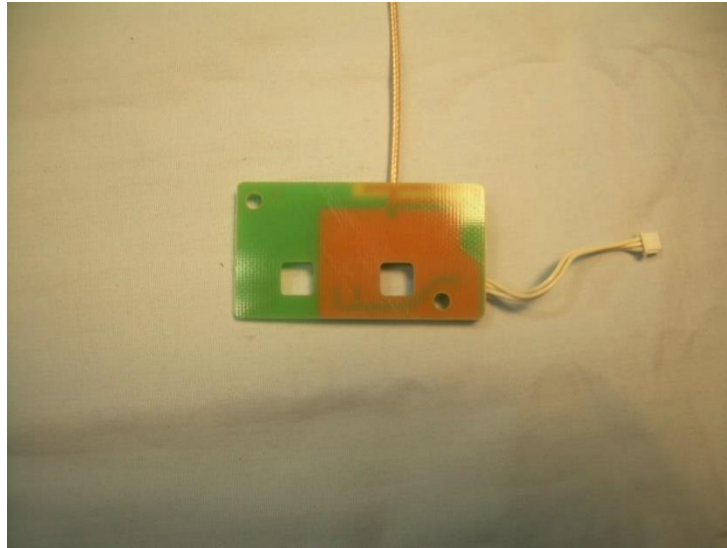
Photograph 4 – Back View of the Main PCB



Photograph 5 – View of the Transceiver portion of the PCB



Photograph 6 – Front View of the Antenna PCBA



Photograph 7 – Back View of the Antenna PCBA



Photograph 8 – View of PCBs in Housing