

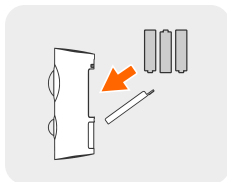
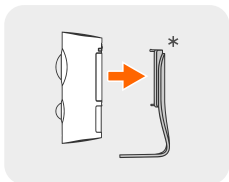
Quick Start Guide



If you have more than one Piper, you must set them up one at a time.

1

Remove Piper's stand and install the provided AA batteries for backup power.

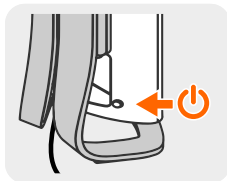
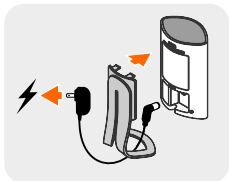


*Piper includes an optional wall mount



2

Plug Piper's power cable into an electrical outlet and reattach its stand. Piper's power button is located on the back.



3

Download the Piper app from getpiper.com/download and **Create an account** when Piper's light turns blue.

OR

To add an additional Piper, go to **'Settings' > 'Multi Piper Management'** in the Piper app.

Need help? Visit help.getpiper.com