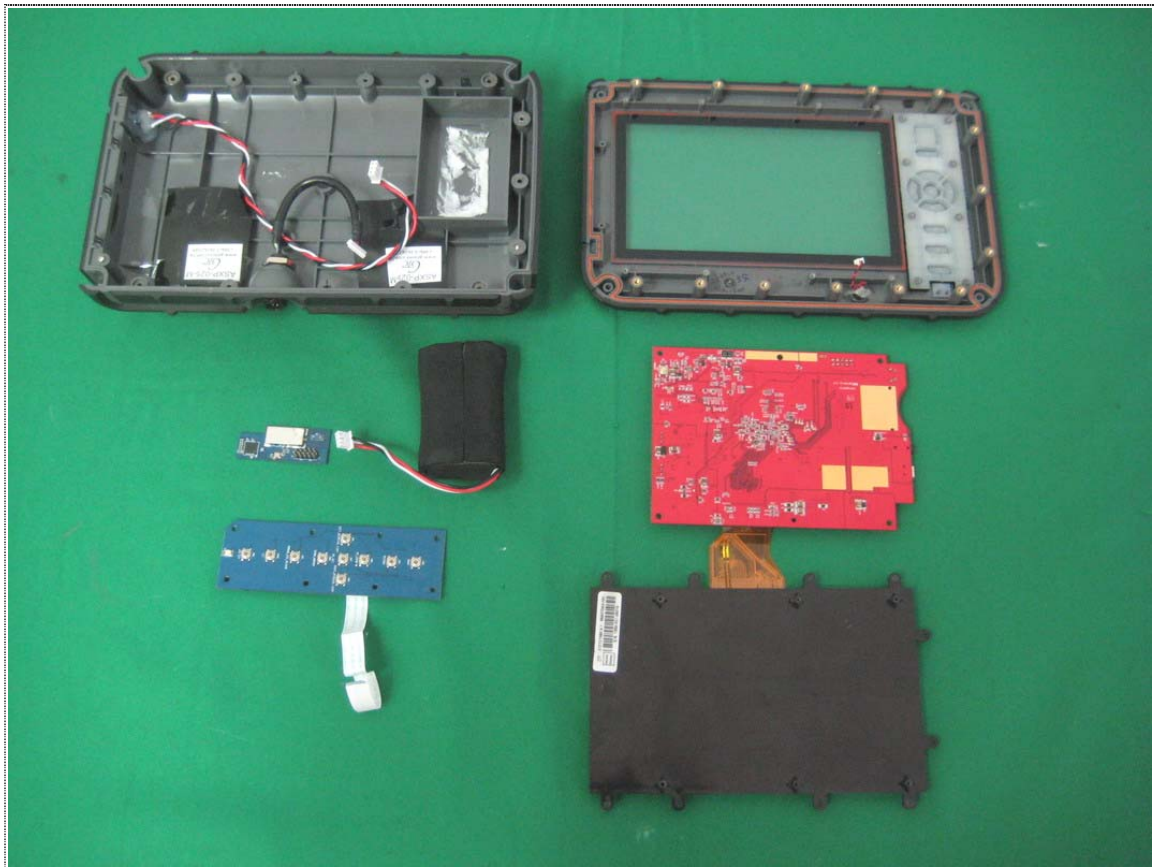
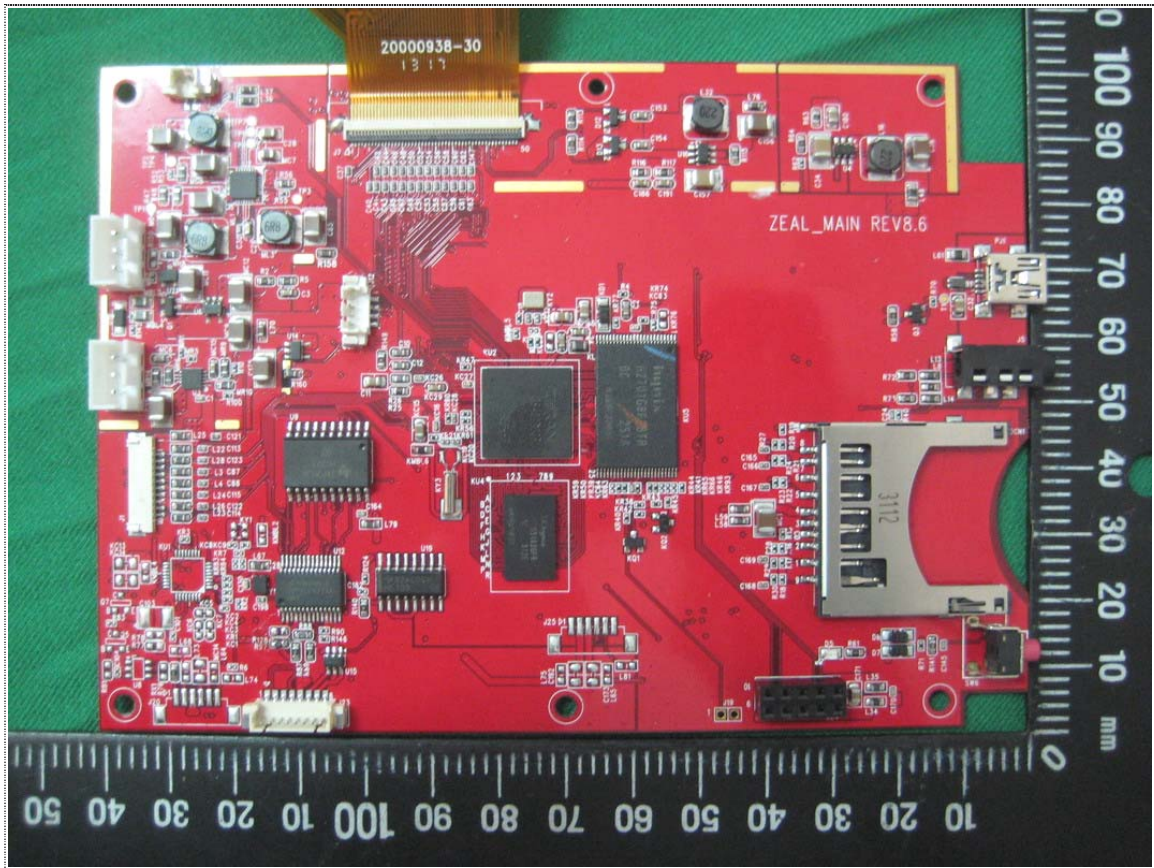


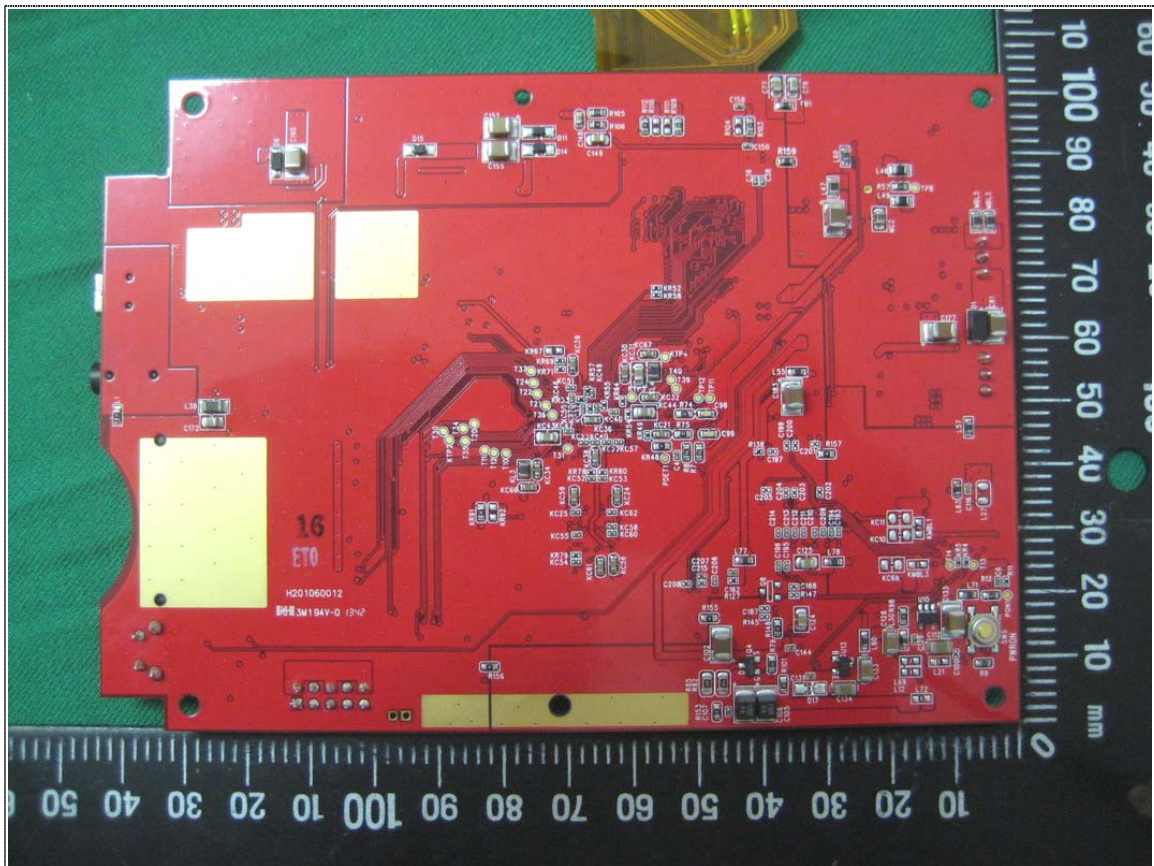
Inner View of EUT-1



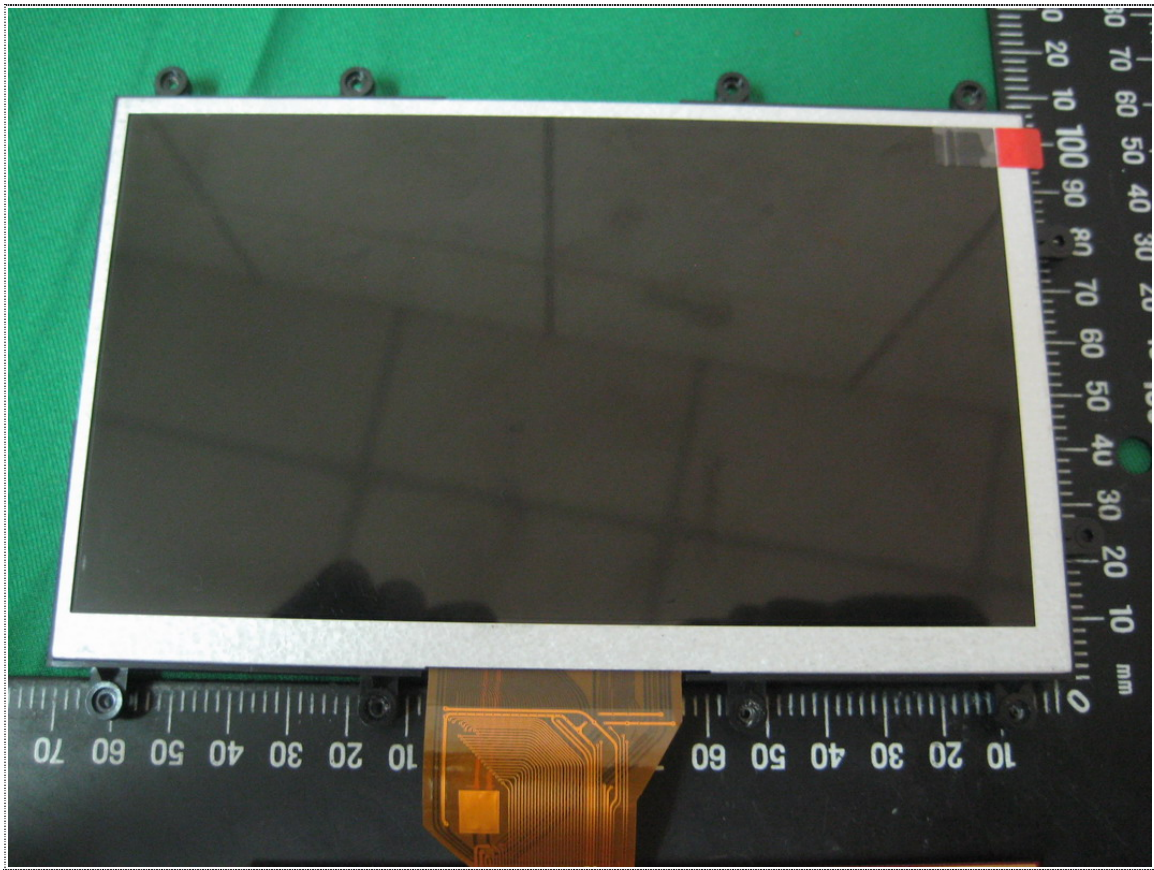
Inner View of EUT-2



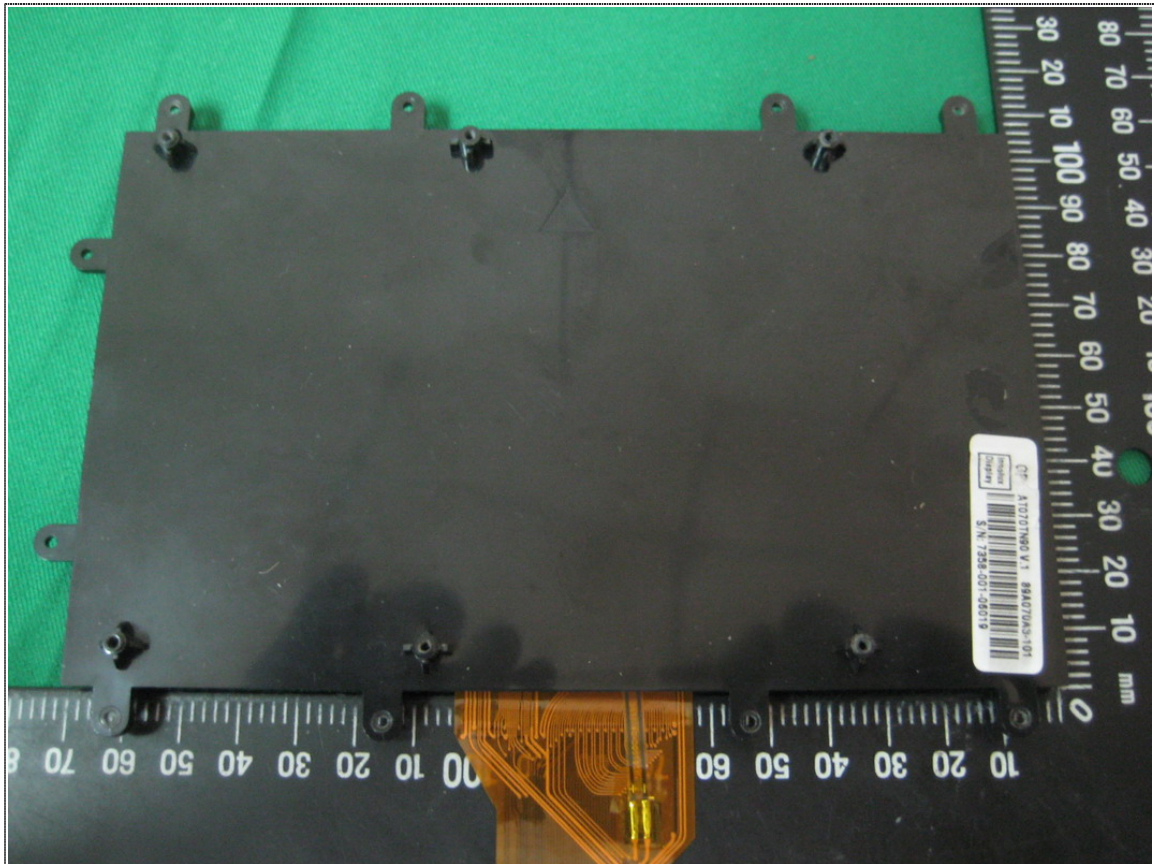
Front View of PCB Board



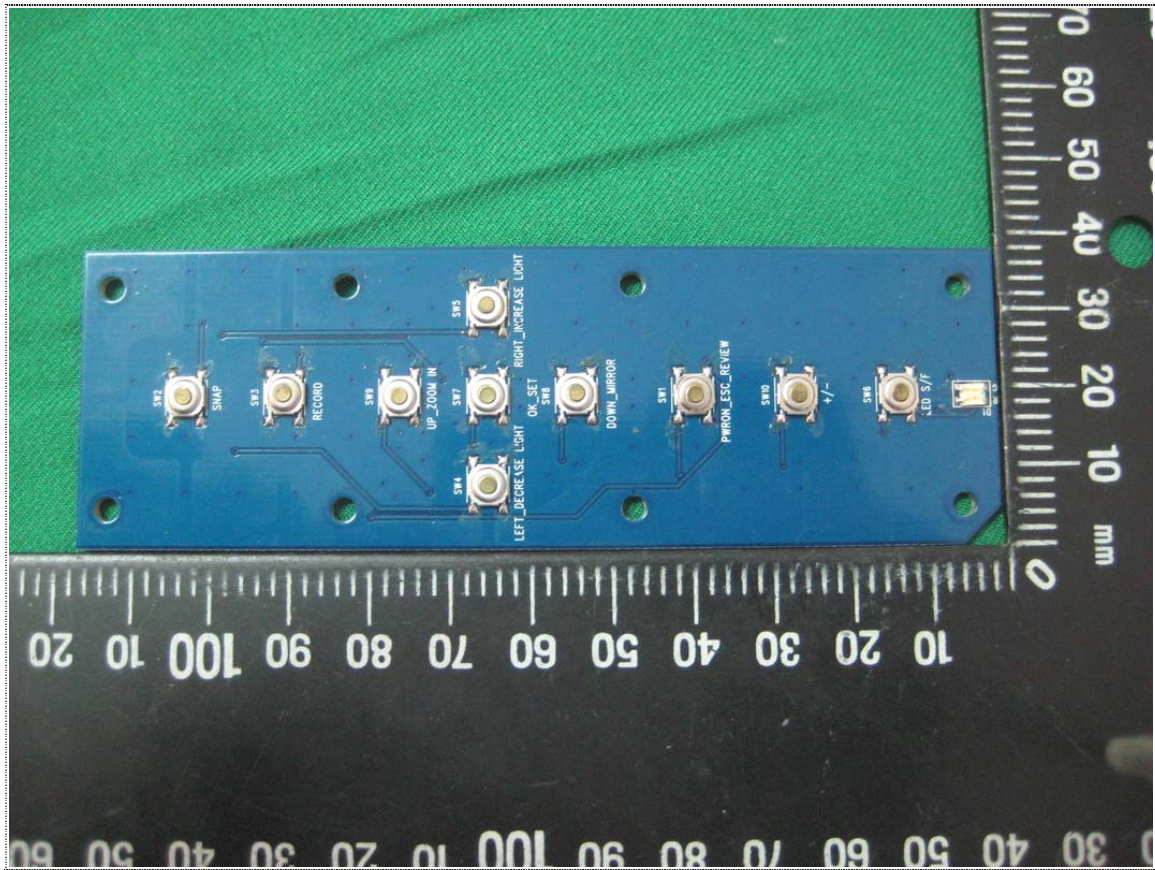
Rear View of PCB Board



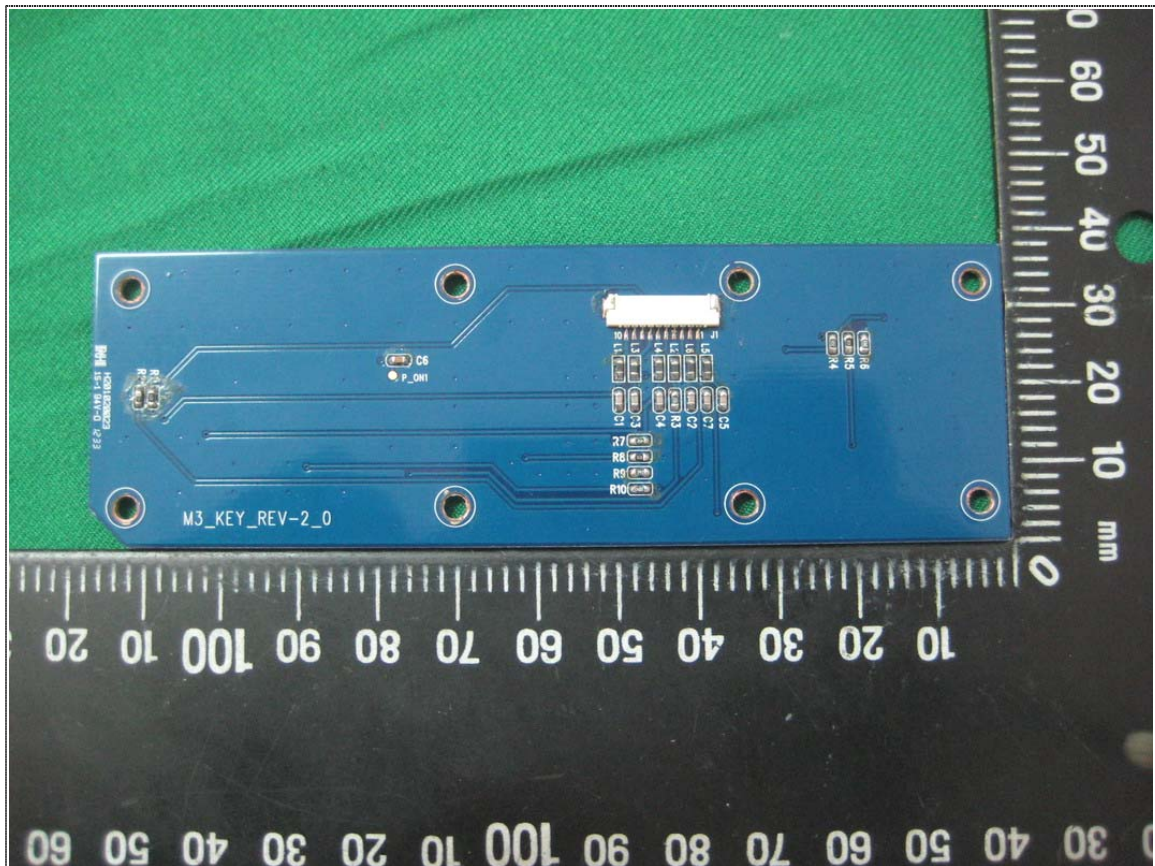
Front View of Panel



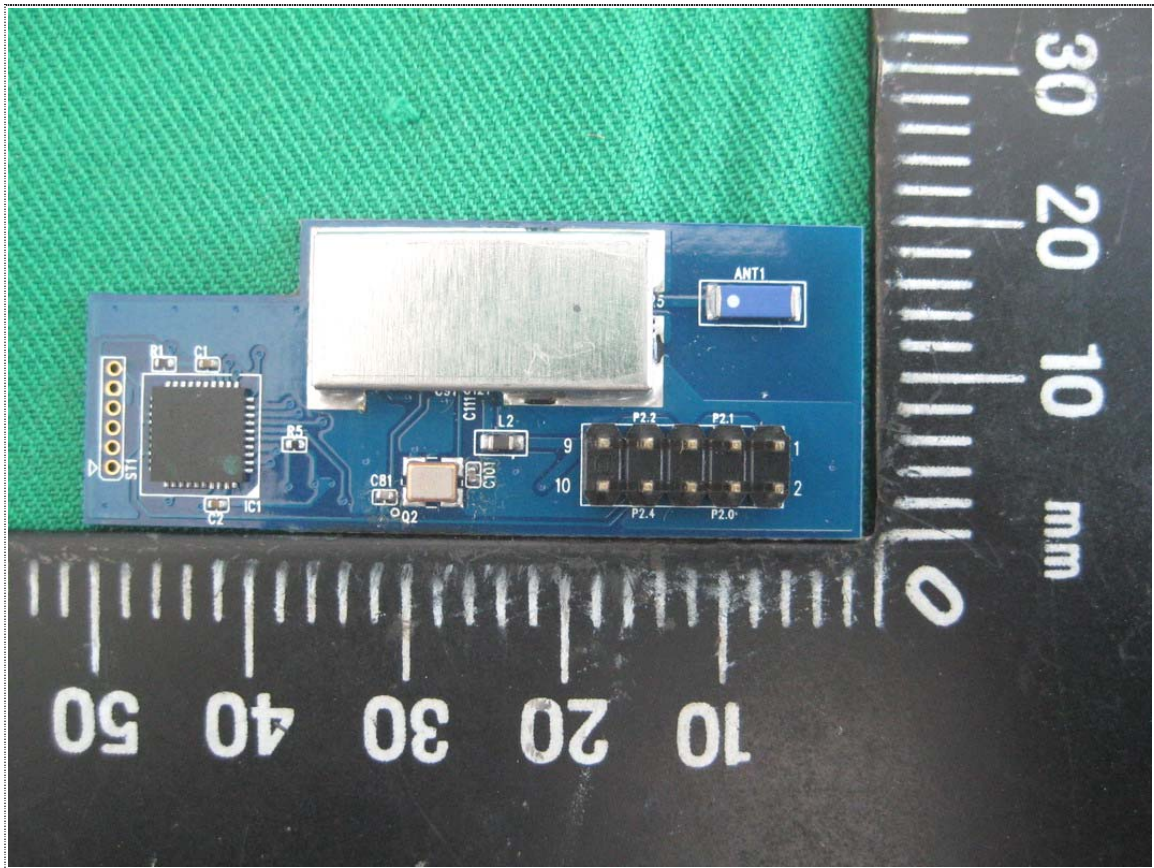
Rear View of Panel



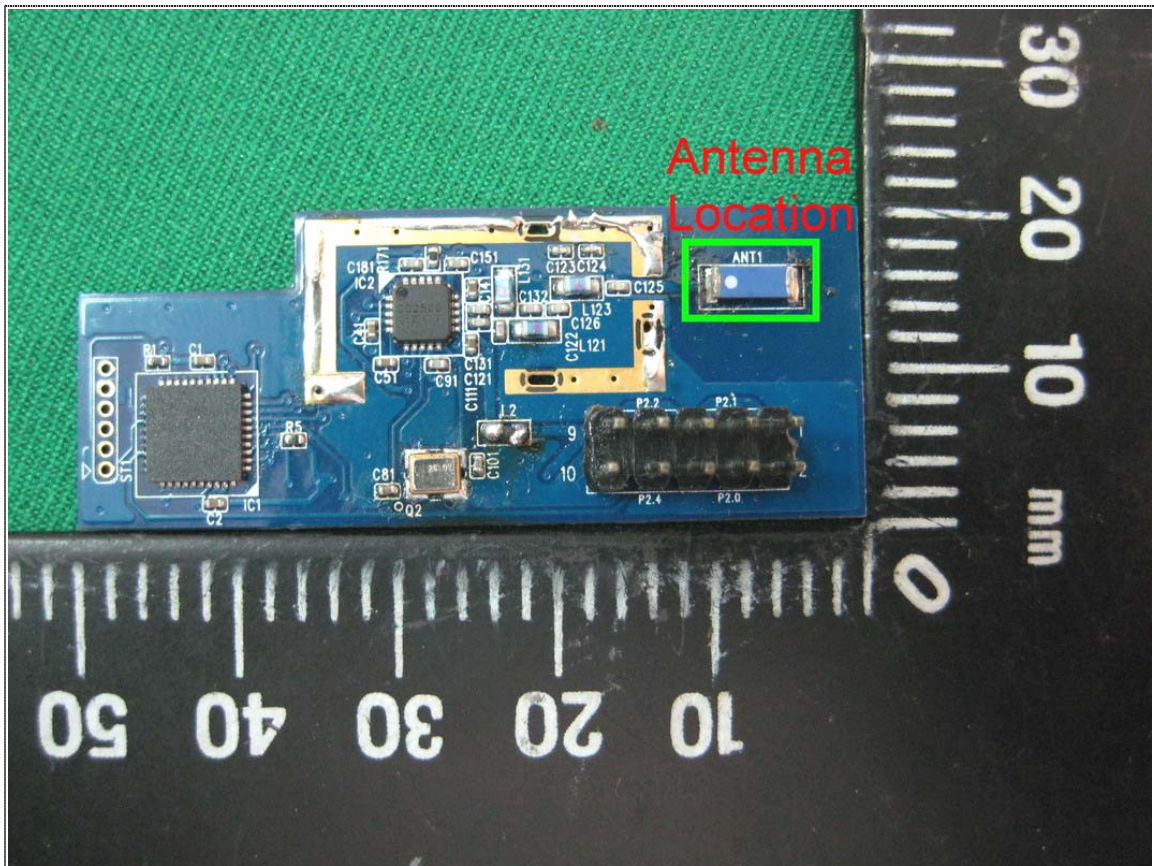
Front View of Button Board



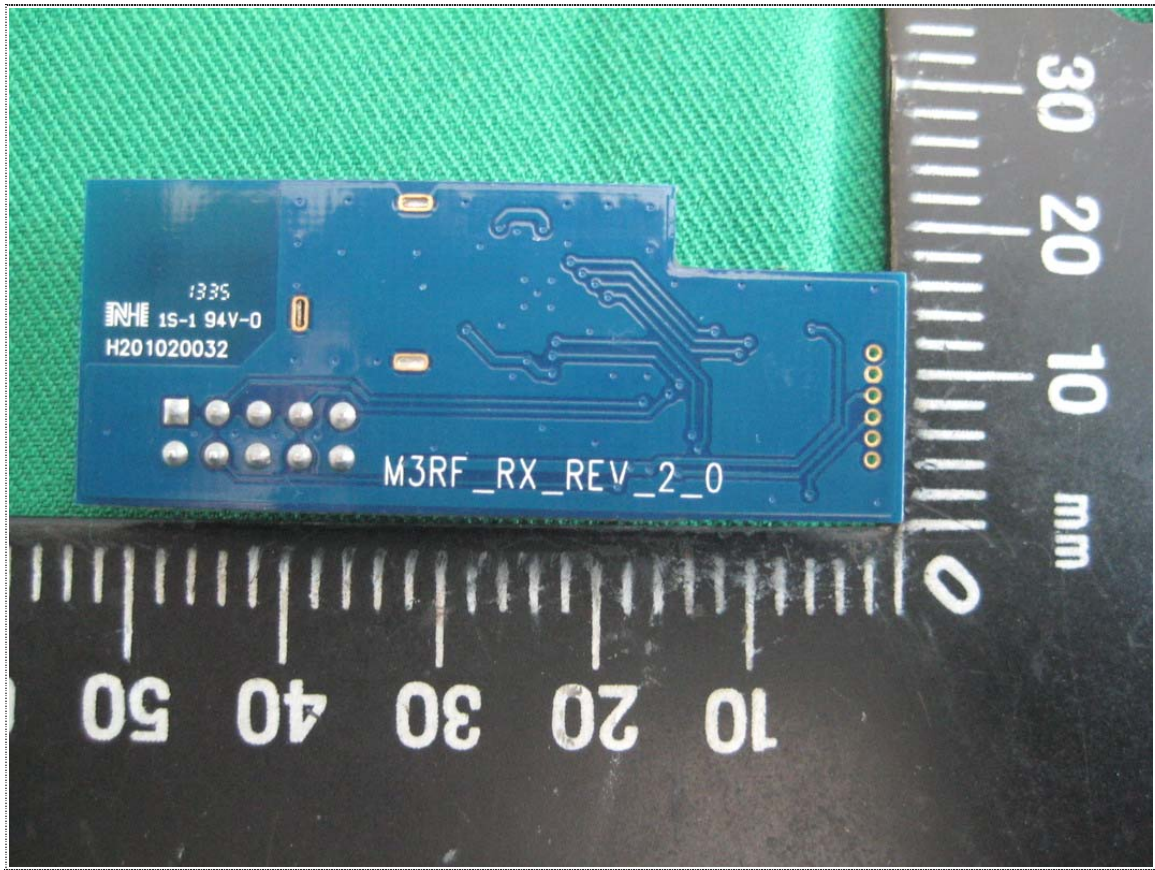
Rear View of Button Board



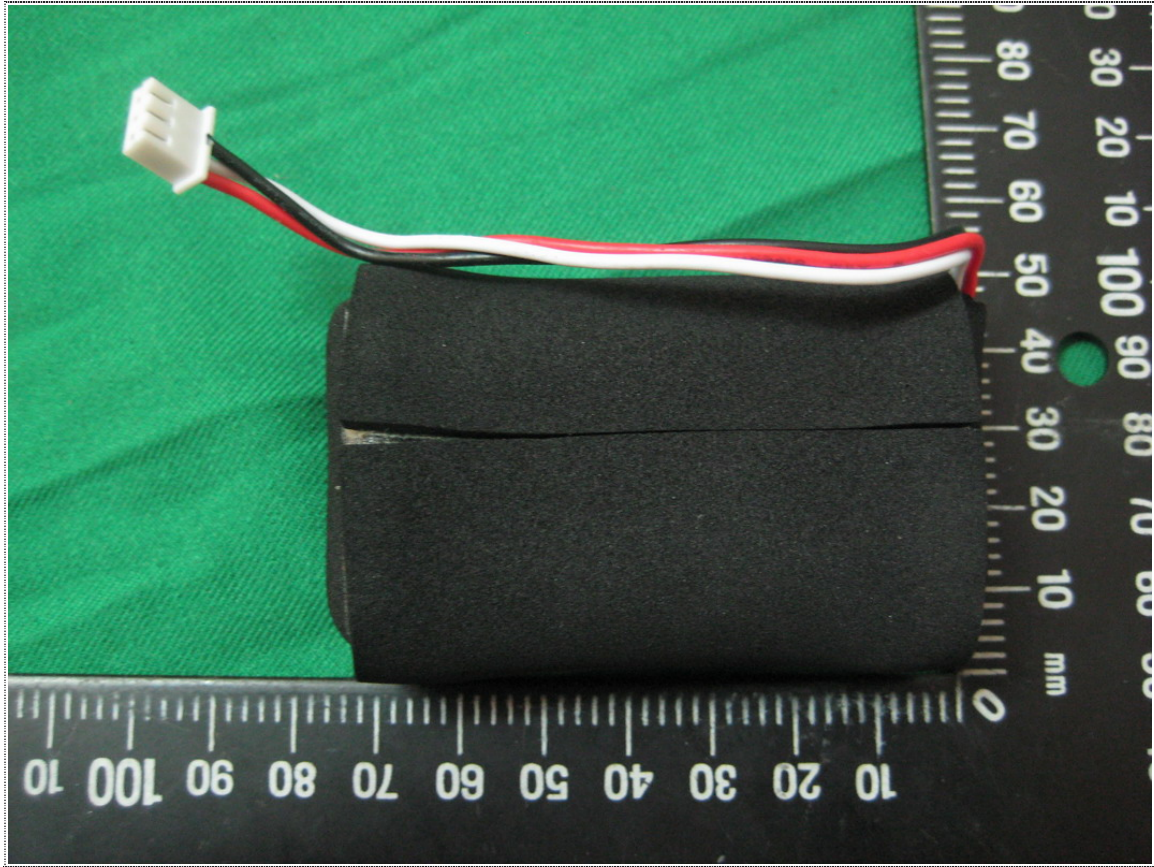
Front View of RF Module-1



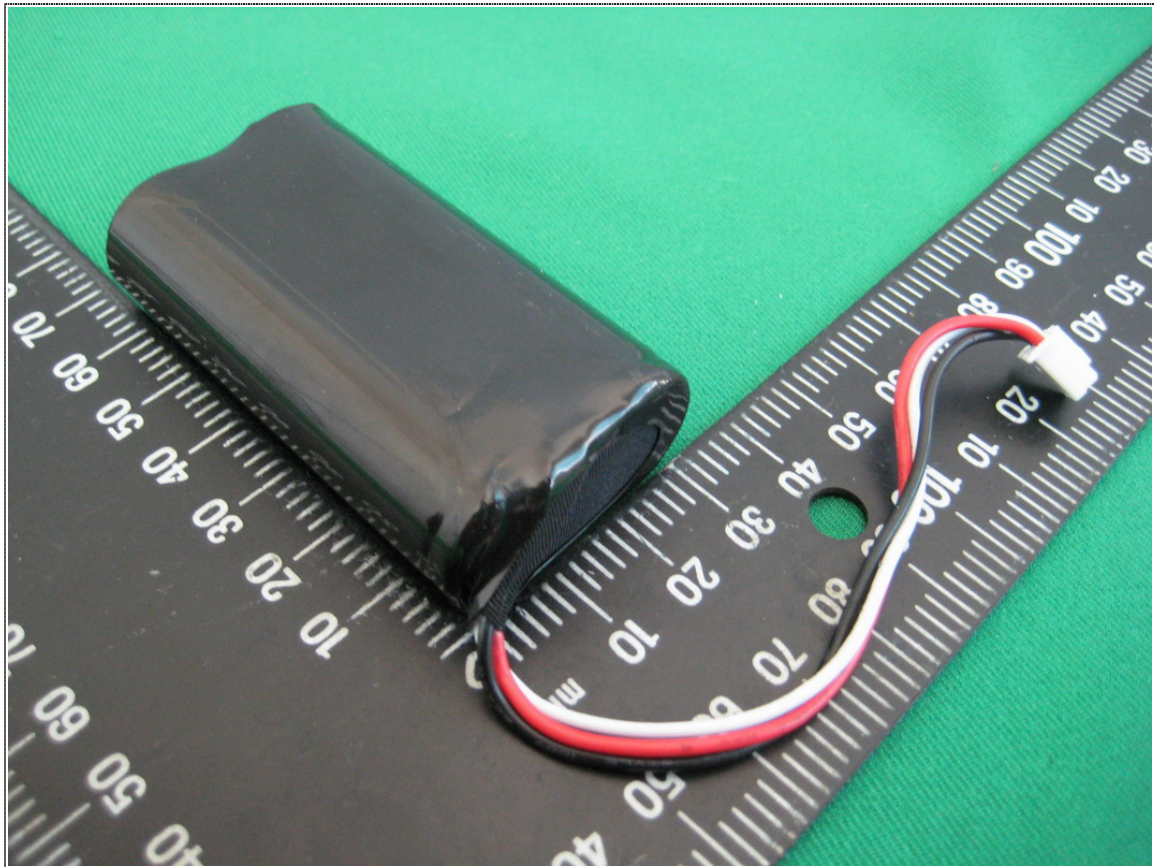
Front View of RF Module-2



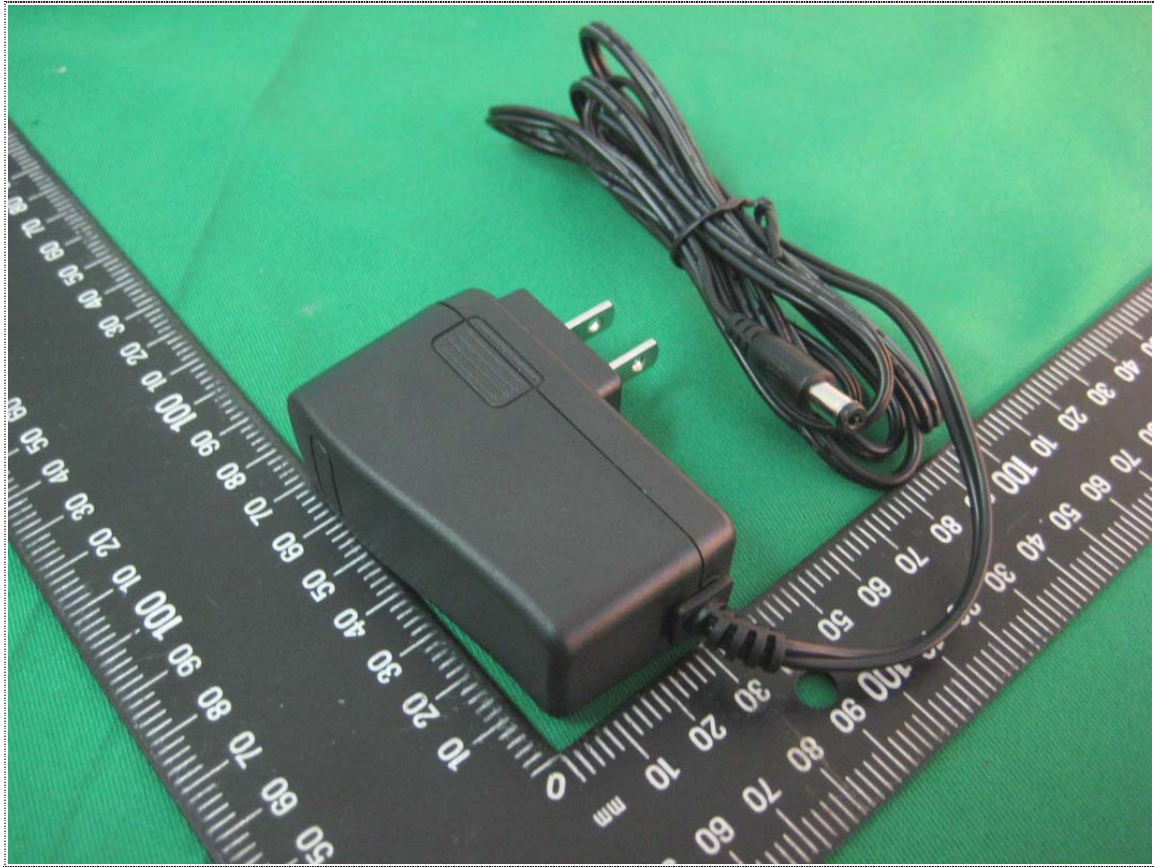
Rear View of RF Module



Front View of Battery



Rear View of Battery

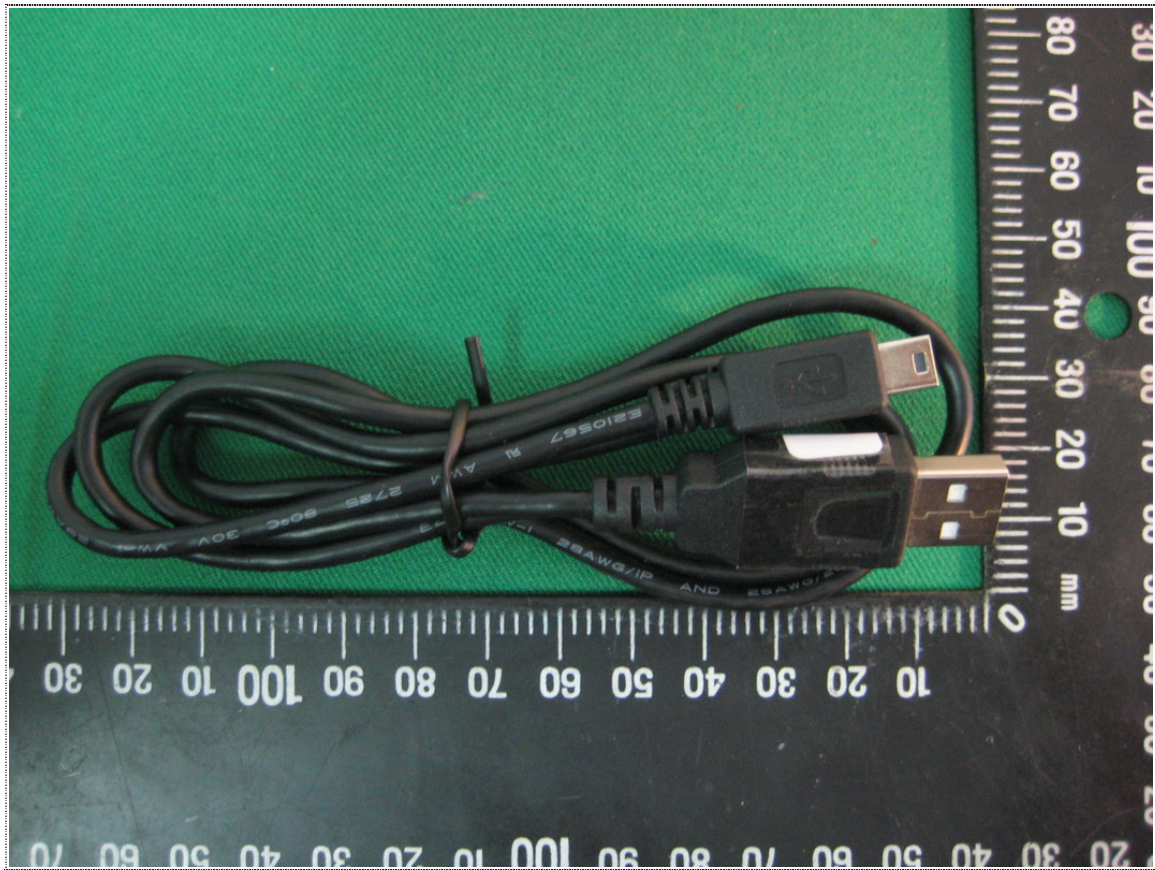


View of Adaptor

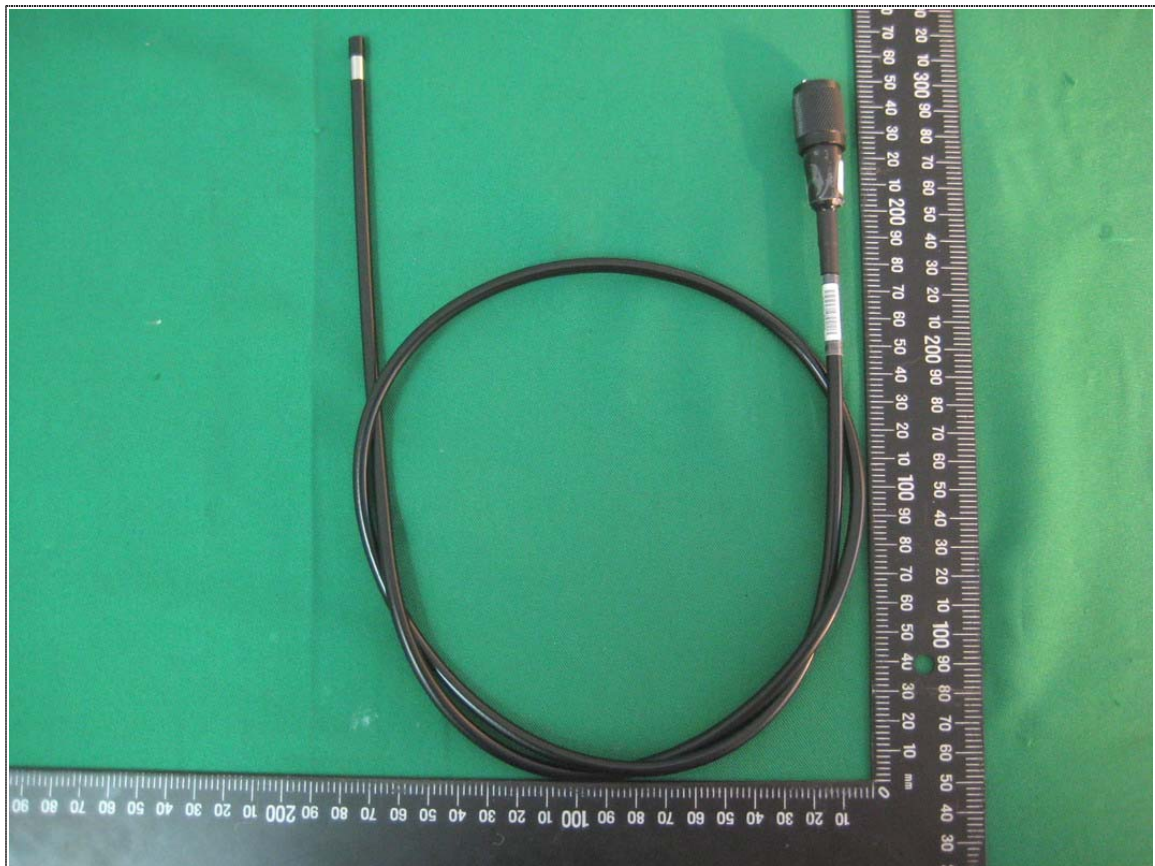


Spec. View of Adaptor





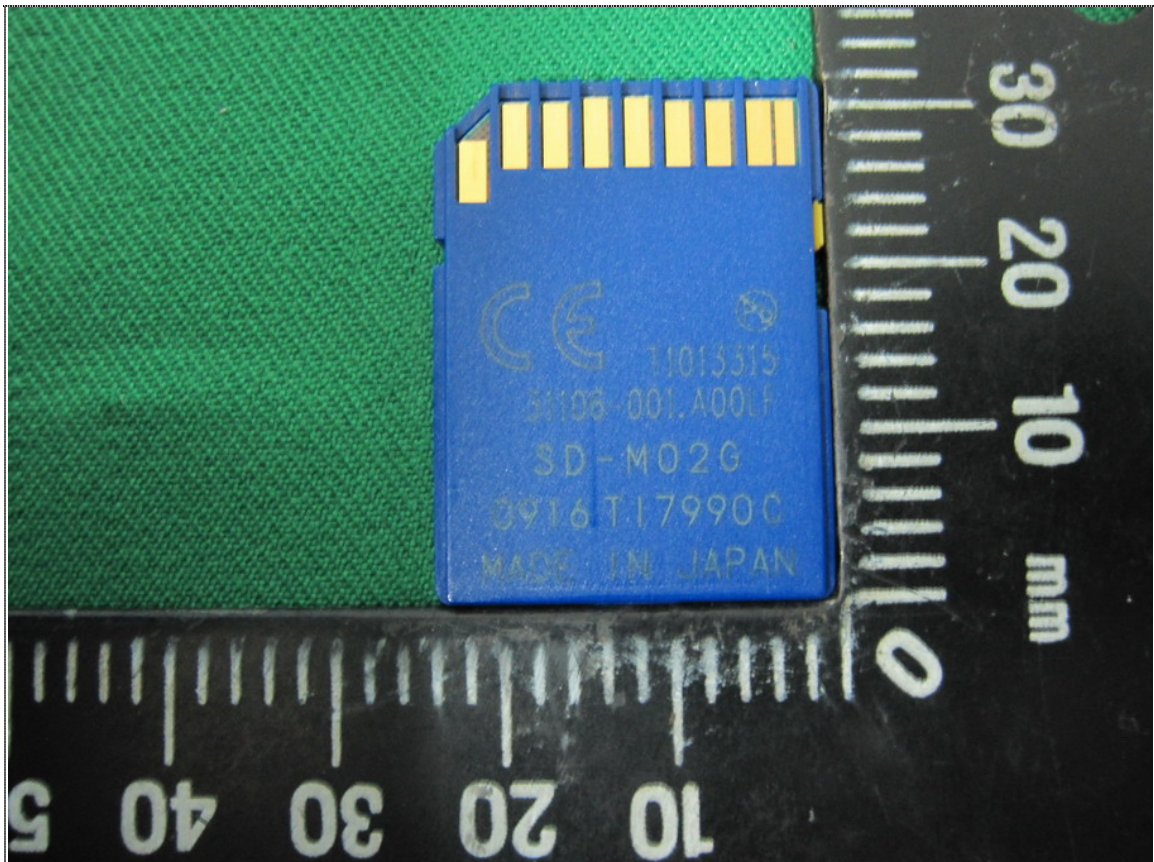
View of USB Cable



View of Video Cable



Front View of SD Card



Rear View of SD Card