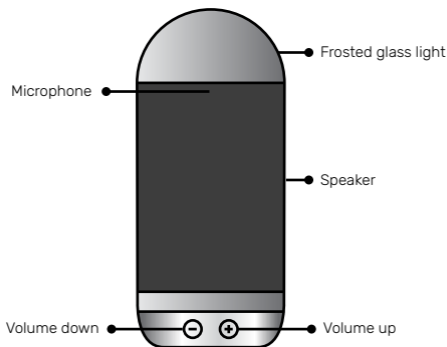


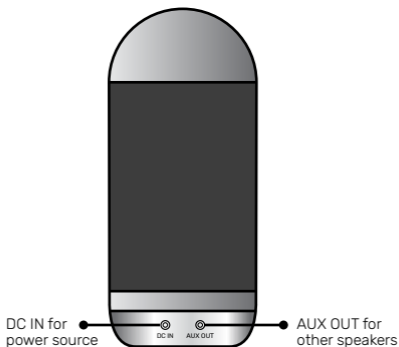
Maddbox

QUICK START GUIDE

Device layout



Front view



Back view

Button functions

Volume up

- 1) Short press to turn the volume up
- 2) Long press for 2 seconds to power on/off Moodbox

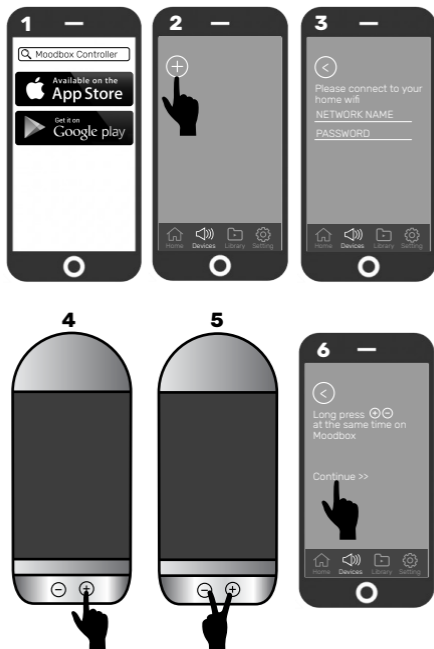
Volume down

- 1) Short press to turn the volume down
- 2) Long press for 2 seconds to mute the microphone

Volume up & down

- 1) Short press both buttons and then speak to Moodbox (this button serves an alternative to saying the wake up words 'Okay Emi')
- 2) Long press both buttons together for 2 seconds to set up Wifi (please follow instructions on the companion app)

WiFi setup



- 1) Download Moodbox Controller App from iOS App Store or Google Play Store. Open the app and create a Moodbox account with your email
- 2) Click (+) on the Devices page
- 3) Input home WiFi credentials which has to be the **same** network as the one your smartphone is connecting to
- 4) Long press (+) button on Moodbox to power it on (if off)
- 5) Long press (+) (-) on Moodbox altogether until to hear Emi saying "Connecting to WiFi"
- 6) Click "Continue" on the app to finish the setup process. Then you can give a name to your Moodbox on the app

Speaking to Moodbox

To speak to Emi on Moodbox please say "Okay Emi" and then tell Emi what you want. Here are some things you can say -



Artist & genre based music

Okay Emi, play some jazz
Okay Emi, play music by The Beatles
Okay Emi, play something for me
Okay Emi, I want some songs like Coldplay



Mood & theme based music

Okay Emi, play some happy songs
Okay Emi, I am feeling stressed
Okay Emi, I got a promotion today
Okay Emi, play some party music



Alarms & music scheduling

Okay Emi, set an alarm for 9AM tomorrow
Okay Emi, set an alarm for 8AM every Monday
Okay Emi, play some jazz tomorrow night at 10PM
Okay Emi, setup a playlist for tonight at 11PM



Weather

Okay Emi, what is the weather like today?
Okay Emi, will it rain tomorrow?
Okay Emi, weather forecast for Hong Kong
Okay Emi, tell me about the day



Date and time telling

Okay Emi, what is the time?
Okay Emi, what is the time in Toronto?
Okay Emi, what is today's date?
Okay Emi, what will be the date of next Monday?



Question & answers

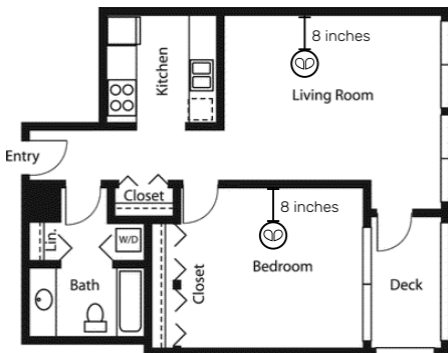
Okay Emi, who is Hillary Clinton?
Okay Emi, when is Christmas?
Okay Emi, how tall is Mount Everest?
Okay Emi, tell me about France



Device control

Okay Emi, play next song
Okay Emi, volume four (1-5)
Okay Emi, dim the lights
Okay Emi, change the color to baby blush

Where to put Moodbox



Place  Moodbox at least 8 inches from the wall for the best performance

Tips:

Moodbox comes with five light scenes which are baby blush (pink), lavender mist (purple), sea breeze (aqua), sunset glow (orange) and zen (warm). You can change the light scene using voice commands or using the controller app

Moodbox supports Bluetooth 4.0. To play from your own music library, turn on Bluetooth on your smartphone and pair with Moodbox. When Bluetooth mode is on, you cannot talk to Moodbox. Once you unpair, Moodbox will go back to the default Wi-Fi mode and all voice commands will be restored

5Ghz Wi-Fi networks are not currently supported. Please connect your Moodbox to 2.4Ghz Wi-Fi networks

For more information and examples, please go to Help on the Moodbox Controller App

Visit our website www.mymoodbox.com for the latest updates

You can also send us an email anytime with your questions and feedback: support@emostech.com

Disclaimer:

The lampshade is fragile as it is made of glass. Please handle with care. Any physical damages to the lampshade are not covered by our after-sales warranty

FCC statement

This device complies with Part 15 of the FCC Rules: Operation is subject to the following two conditions:

1. This device may not cause harmful interference and
2. This device must accept any interference that is received, including any interference that may cause undesired operation.

This device is acting as slave and operating in the 2.4 GHz (2412 ~2462 MHz) band.

NOTE: This equipment has been tested and found to comply with the limits for a Class B digital device, pursuant to part 15 of the FCC Rules. These limits are designed to provide reasonable protection against harmful interference in a residential installation. This equipment generates uses and can radiate radio frequency energy and, if not installed and used in accordance with the instructions, may cause harmful interference to radio communications. However, there is no guarantee that interference will not occur in a particular installation. If this equipment does cause harmful interference to radio or television reception, which can be determined by turning the equipment off and on, the user is encouraged to try to correct the interference by one or more of the following measures:

- Reorient or relocate the receiving antenna.
- Increase the separation between the equipment and receiver.
- Connect the equipment into an outlet on a circuit different from that to which the receiver is connected.
- Consult the dealer or an experienced radio/TV technician for help

Radio Frequency Exposure Statement

The device has been evaluated to meet general RF exposure requirements. The device can be used in fixed/mobile exposure conditions. The min separation distance is 20cm.

Changes or modifications to this unit not expressly approved by the party responsible for compliance could void the user's authority to operate the equipment.