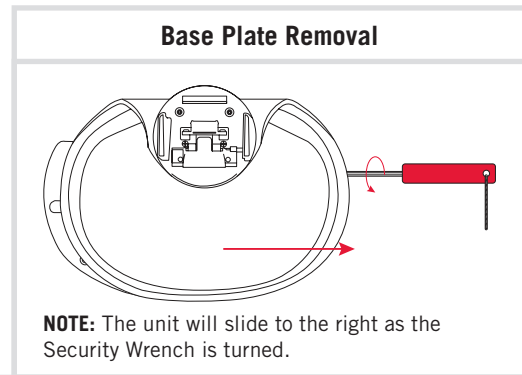
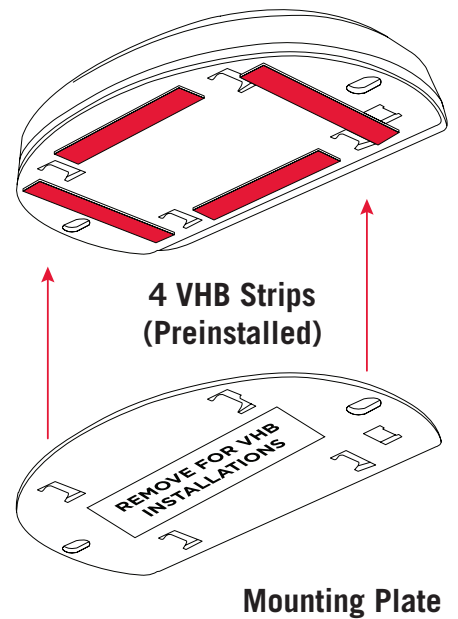
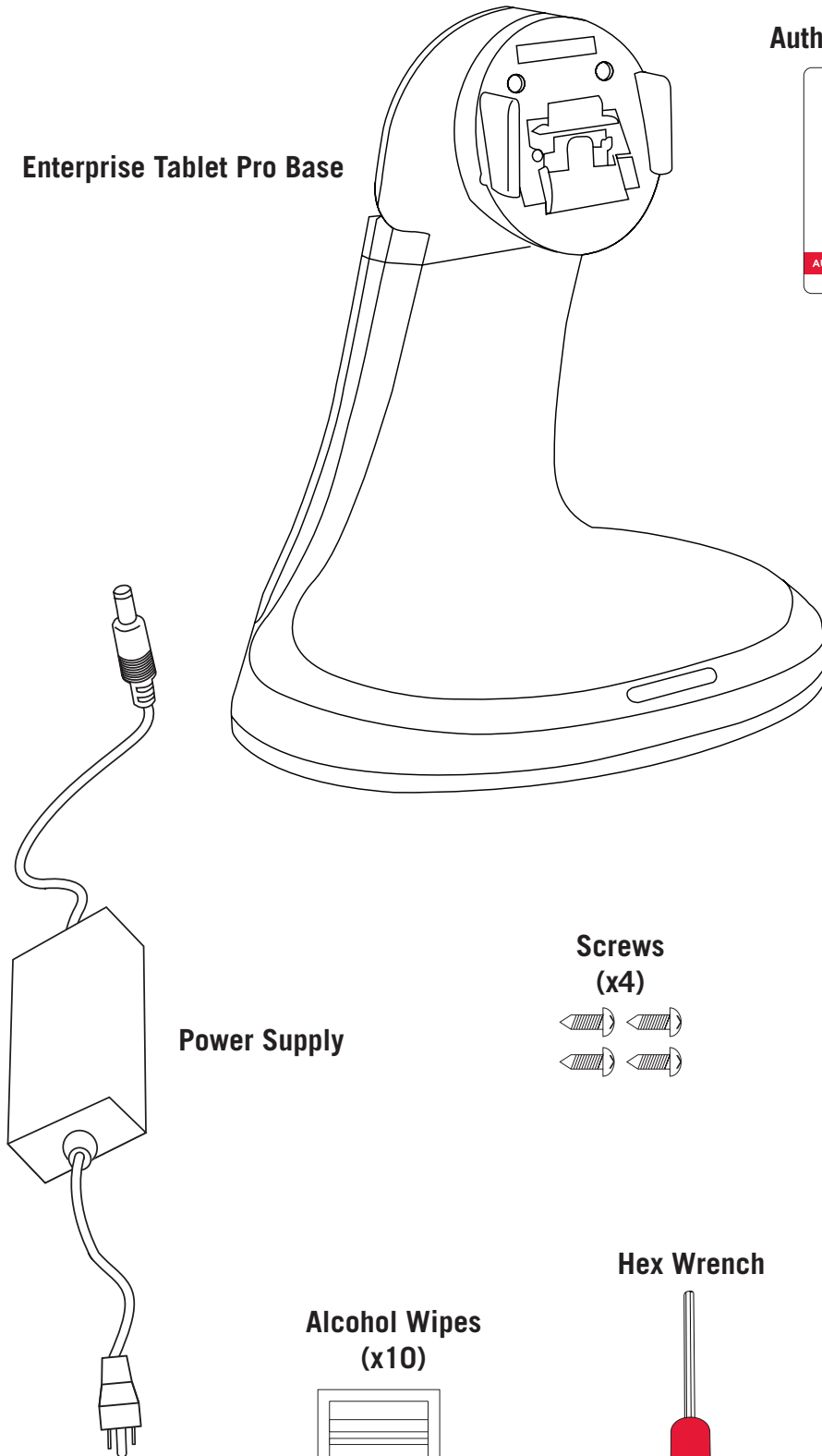


Materials in Box:



Enterprise Tablet Pro	Enterprise Tablet Lite

Configuration A: Top Mounted

1

2

3

Configuration B: Wall Mounted

1

2

3

NOTE: The unit will slide to the left as the Security Wrench is turned.

4

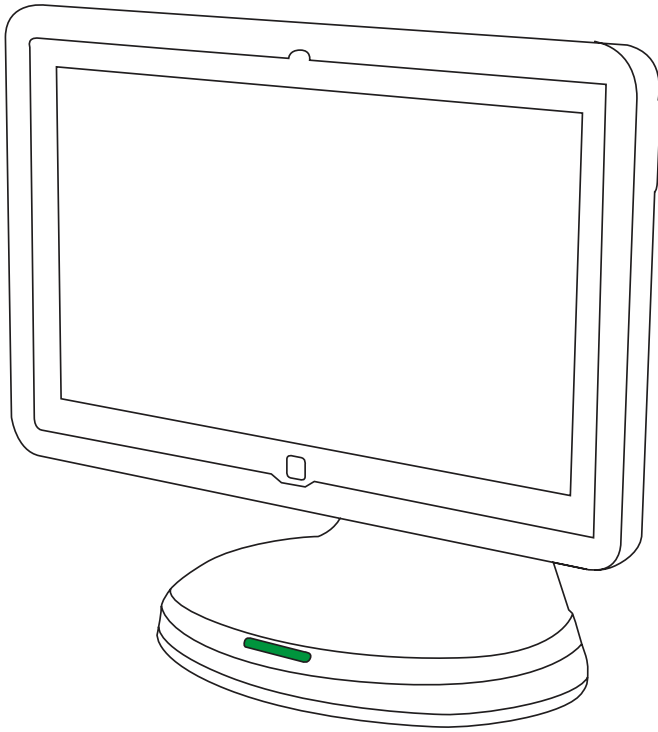
Remove Case from Base

<p>1</p>	<p>2</p>
<p>3</p>	<p>4</p>

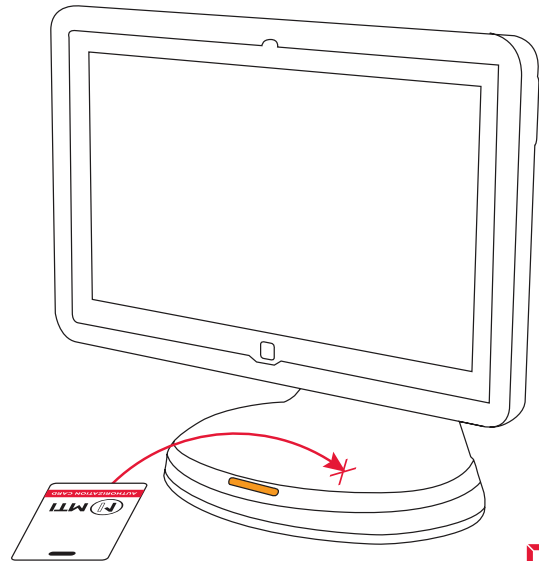
LED Indicators

<p>Case Docked</p>	<p>Case Ready For Removal</p>
<p>Case Removed</p>	<p>Detecting Card</p>

1



2

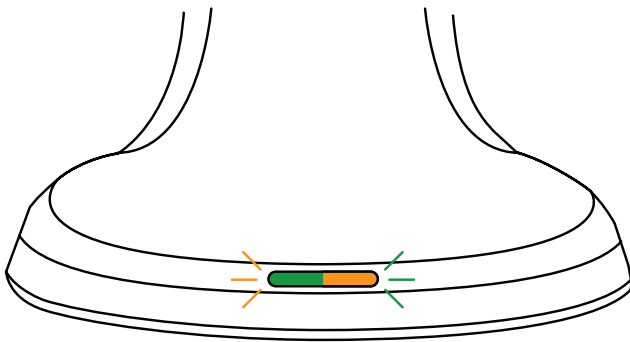


Authorization Card

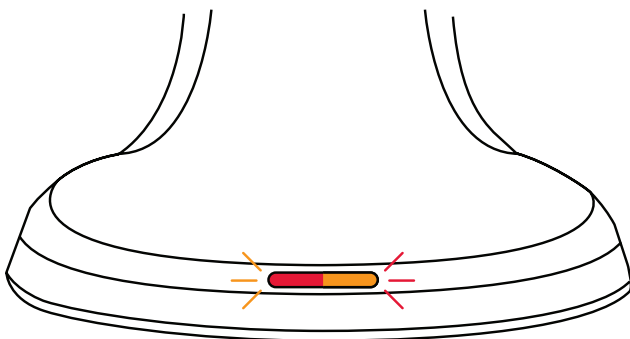
0:02

3

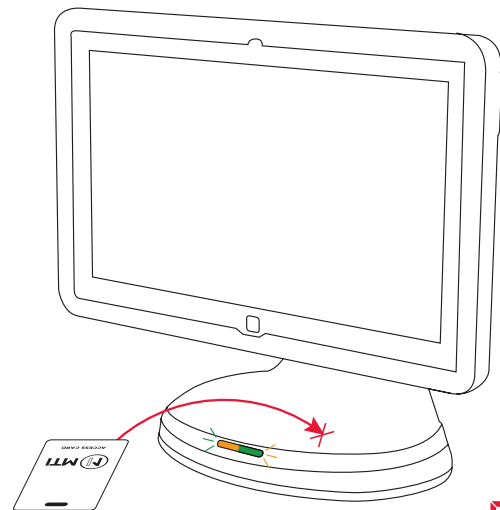
If the case is docked:



If the case is removed:



4



Access Card

0:02

If no Access Card is detected, the Base will return to normal condition waiting for registered Access Card to unlock the Base.

The Base can register a maximum of 5 Access cards. The process will need to be repeated for each card. If a sixth card is registered, the first registered card will be deregistered.

IF AUTHORIZATION CARD IS LOST OR STOLEN, CONTACT CUSTOMER SERVICE FOR REPLACEMENT.

1

The base can register a maximum of 5 Access cards.

Example:

ACCESS005
ACCESS004
ACCESS003
ACCESS002
ACCESS001

NOTE: The above grid is a conceptual visual representation of the Electronic Register.

2

If a sixth card is registered, the first registered card will be deregistered.

Example:

ACCESS006
ACCESS005
ACCESS004
ACCESS003
ACCESS002

3

If a card is **lost or stolen**:

Example:

ACCESS005
ACCESS004
ACCESS003
ACCESS002
ACCESS001

4

Take any of the remaining access cards and register it 5 consecutive times:

Example:

ACCESS001
ACCESS001
ACCESS001
ACCESS001
ACCESS001

5

Then re-register the remaining cards plus the new one ordered through Customer Service.

Example:

ACCESS006
ACCESS005
ACCESS004
ACCESS002
ACCESS001

6

**IF AUTHORIZATION CARD IS LOST OR STOLEN,
CONTACT CUSTOMER SERVICE FOR REPLACEMENT.**

Federal Communication Commission interference statement

This equipment has been tested and found to comply with the limits for a Class B digital device, pursuant to part 15 of the FCC rules. These limits are designed to provide reasonable protection against harmful interference in a residential installation. This equipment generates, uses and can radiate radio frequency energy and, if not installed and used in accordance with the instructions, may cause harmful interference to radio communications. However, there is no guarantee that interference will not occur in a particular installation. If this equipment does cause harmful interference to radio or television reception, which can be determined by turning the equipment off and on, the user is encouraged to try to correct the interference by one or more of the following measures: -Reorient or relocate the receiving antenna. -Increase the separation between the equipment and receiver. -Connect the equipment into an outlet on a circuit different from that to which the receiver is connected. -Consult the dealer or an experienced radio/TV technician for help.

FCC Caution

This device complies with Part 15 of the FCC Rules. Operation is subject to the following two conditions:

1. this device may not cause harmful interference and
2. this device must accept any interference received, including interference that may cause undesired operation

RF Exposure Warning

The equipment complies with RF exposure limits set forth for an uncontrolled environment. The antenna(s) used for this transmitter must not be co-located or operating in conjunction with any other antenna or transmitter.

You are cautioned that changes or modifications not expressly approved by the party responsible for compliance could void your authority to operate the equipment.