

5

4

3

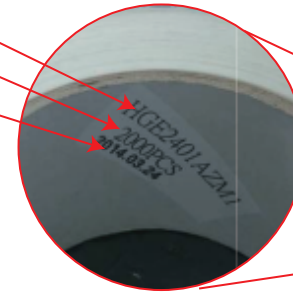
2

1

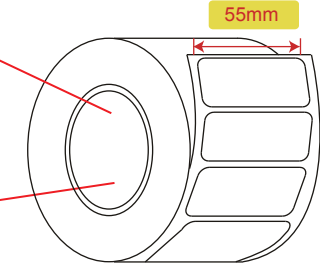
D

D

Calcomp part number
Amount
Manufacture date

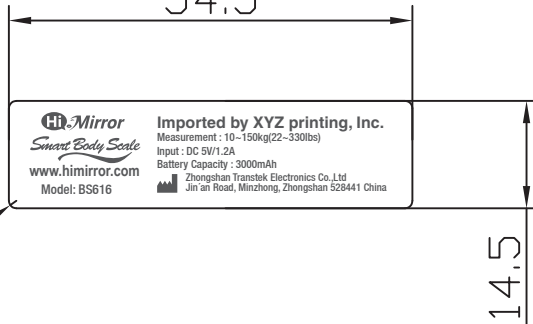


| REVISIONS | | | |
|-----------|-------------|--------------------|------|
| REV | DESCRIPTION | SIGNATURE AND DATE | |
| | | CHK | ENGR |
| | | | |



Roll Film Type

54.5

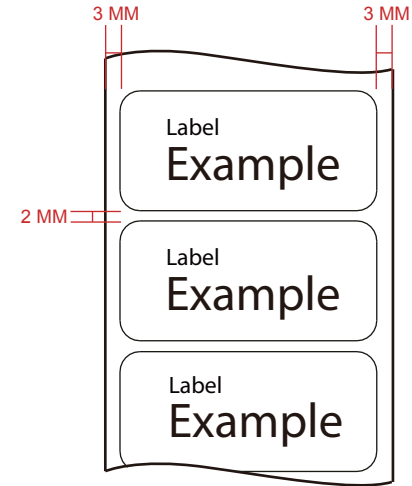


R1

14.5

Hi Mirror
Smart Body Scale
www.himirror.com
Model: BS616

Imported by XYZ printing, Inc.
Measurement : 10-150kg(22-330lbs)
Input : DC 5V/1.2A
Battery Capacity : 3000mAh
Zhongshan Transtek Electronics Co.,Ltd
Jin'an Road, Minzhong, Zhongshan 528441 China



Pull-in way from vendor

SPEC.:

54.5X14.5MM 80G ART PAPER 1C(K80) MAT PP COATING
54.5X14.5MM 80G

A

A

| | | | | | | | |
|--|-----------|-----------|---------|------------|------------------------|----------------------------|--|
| HSF (Hazardous Substances Free) COMPLIANCE | SCALE | 1:1 | UNIT | mm | SIGNATURE | DATE | Cal-Comp ELECTRONICS, INC. TITLE PRODUCT LABEL-1A |
| | TOL. | x ±0.2 | x | ANGL | DESIGN DRAW: Nicole | 16" 07/29 | |
| | MATERIAL: | | | CHECK: | Jimmy | 16" 07/29 | |
| FIRST APPLICATION | NEXT ASSY | MDL NO. | FINISH: | SIZE A4 | SHEET 1 OF 1 | DRAWING NO. HGBS6160X11 | REV. 01 |

| | | |
|-----|----------|-----|
| MDL | PART NO. | RMK |
|-----|----------|-----|

5

4

3

2

1