

# User Manual

## Table of Contents

<b>Safety Information .....</b>	<b>4</b>
<b>Introduction .....</b>	<b>6</b>
<b>Call Functions.....</b>	<b>7</b>
<b>Contacts .....</b>	<b>9</b>
<b>Message .....</b>	<b>12</b>
<b>Camera.....</b>	<b>19</b>
<b>Gallery.....</b>	<b>22</b>

<b>Music</b> .....	<b>24</b>
<b>Sound Recorder</b> .....	<b>24</b>
<b>Alarm Clock</b> .....	<b>25</b>
<b>Google Play</b> .....	<b>27</b>
<b>Settings</b> .....	<b>29</b>
<b>Storage</b> .....	<b>37</b>
<b>FCC Rules Compliance</b> .....	<b>37</b>
<b>IC Notice</b> .....	<b>41</b>

# Safety Information

Please carefully read the items below:

## **Use Safely**

Do not use the phone in situations where it might cause danger.

## **Transportation Safety**

Please observe all transportation laws and regulations.

Please drive with both hands on the wheel.

**DO NOT TEXT AND DRIVE**

## **Hospitals**

Please follow limitations.

Please turn off your mobile phone when near medical instruments.

## **Airports**

Remember to follow all airport and flight safety regulations.

Please do not use your phone during flight.

### **Toxic Chemicals**

Do not use your mobile phone around fuels or chemicals.

### **Hazard**

Do not use in hazardous areas where explosions may occur.

### **Accessories and Batteries**

Use only Blu authorized batteries and accessories.

### **Backup**

Remember to keep a written record of all important information.

### **Water**

Your phone is not waterproof. Keep it away from water and liquids.

### **SOS Emergency Calls**

Make sure your mobile phone is switched on and in a service area. In home screen, tap the

phone key and dial 911 and send.

# Introduction

## Power On and Off

**On** - Please ensure the SIM card has been properly inserted into the phone. Long press the Power key to switch on the phone.

**Off** - In standby mode, long press on Power key until an options menu appears. Select Power Off in the menu and confirm

## Security

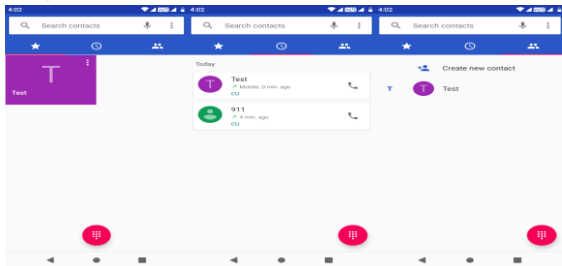
You may set a security lock feature as a security measure for the phone. For further information regarding password locks, password revision and other functions please enter into the security option in system settings.

# Call Functions

At the dial keyboard, enter the phone number and then click the dial key. If dialing an extension, you may click the dial pad icon in the bottom of the screen to open the interface and enter the number of the extension. You may also press and hold the 0 key to add a (+) sign when adding an international dialing prefix.

## history

---





Every telephone number called and received will be saved in the history. All numbers in the history can be dialed directly by clicking the CALL BACK on the screen. When the number appears on the list, click it to view details.

### **Call Options**

---

There are different options that can be used in the history and dialing interface. You may press the MORE while in the dial interface and adjust speed dial and call settings. In the dialing interface, you may press the search button to browse through contacts list or set default contact resources.

## **Contacts**



**Enter:** Click on the applications menu and select contacts.

- The default display is the phone contacts and SIM card contacts.
- The contacts are organized alphabetically by default.

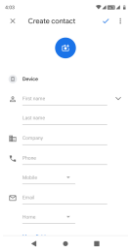
Click the Search icon to enter the contact search interface.

- Any numbers or letters associated with any of the contacts
- saved in the list will be shown in the search results.

### **Add New Contact**

---

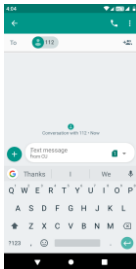
1. Click the add contact icon (+) to add contact.
2. Select to save your contacts to the Google™ account, the phone or the SIM card.
3. You may enter different contact details which include adding a picture, name, telephone number, group, address, and email among other options.
4. Click to finish and save contact.



## Messages

You may use this function to exchange text messages and multimedia messages with your family and friends. The messages to and from the same contact or phone number will be

saved into a single conversation so you may see the entire message history conveniently.



## Send an SMS

---

Application Menu » Messaging » New message (or shortcut icon)

1. Click to enter recipient (You may enter contacts from contact book or enter a new number)

2. Compose Message

3. Send

### **Send an MMS**

---

When creating message, the default message style is SMS. The message will automatically convert to MMS when adding an attachment.

1. Click the attachment icon in the messaging interface.
2. Click to add attachments and create an MMS message.

## **Internet Browser**

### **Menu Functions**

---

•Recent tab

- After browsing through multiple pages, this option will return the user to the previous page.

Windows

- You may view all windows open by clicking the windows icon in the upper right part of the browser.

Bookmarks

- Click the save to Bookmarks option to make the current URL as a saved

Bookmark.

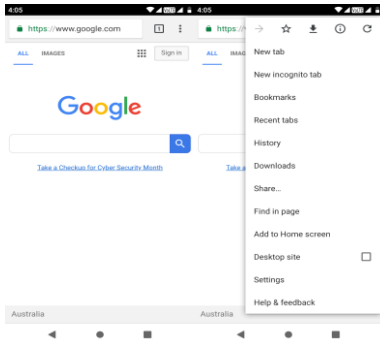
- Click Bookmarks/History to opened saved bookmarks.

Find on page: Search current page.

Share page: Select to share the current page.

Bookmarks/History: Show your browsing history and view the most visited pages.

Settings: Contains a variety of browser settings.



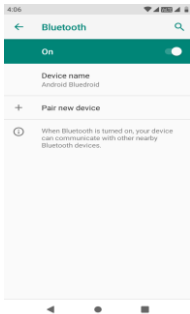


# Bluetooth & Wi-Fi

Bluetooth is a short-range wireless communications technology that devices can use to exchange information and connect to different types of devices which include headsets and other devices.

## **Power on Bluetooth**

---



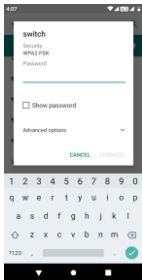
- 1) Settings » Bluetooth and select to power on Bluetooth.
- 2) The Bluetooth icon will appear in the notification bar. Click "scan for devices" and the phone will start to scan for all devices within range.
- 3) In Bluetooth settings all the devices found will displayed in the list under the icon.

**Note:** *The maximum detecting time of the phone is 2 minutes.*

## **Power on Wi-Fi**

---

- 1) Settings » Wi-Fi and select ON to power on Wi-Fi
- 2) Click on the desired Wi-Fi network to be connected. *Unsecured networks can be connected to directly - secured networks require a password or credentials prior to connection.*



# Camera

## Camera

---

**Prior to use:** Insert SD card before using the camera or video camera. All photos or videos taken by the phone are typically stored in the memory card for large storage capacity of images.

### **Open Camera**

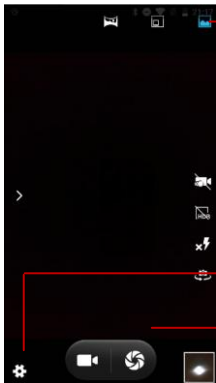
1. Applications Menu » Camera
2. Switch to video mode if you want to record videos.

**Note:** *You may place a camera shortcut icon on any of the screens*

### **Take Pictures**

1. Aim the object that the picture will be taken.

2. Press the "Shutter" button on the screen.
3. After taking the picture, the file will be saved in the camera's gallery folder.
4. You can view the photos by clicking the preview box button. You may adjust various settings for the camera by pressing Menu while in the camera interface. When in the camera viewfinder mode, you can switch to video or photos' gallery.

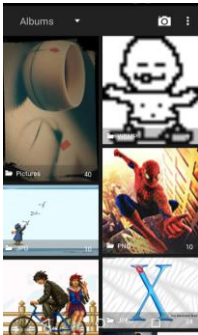


**Picture modes**

**Settings**

**Select between  
Camera & Video**





# Gallery

## Open Images

---

Applications Menu » Gallery

## Share Pictures

---

You may share pictures by sending them through different

types of installed applications. You may also send pictures through the MMS message function by composing a message and attaching the picture. Any image can also be sent via the Bluetooth function by selecting Bluetooth equipment that has been paired.

## Adjust Image

---

Press Menu and Edit to adjust images

You may select from different effects that may include:

Vintage, Black and White, Instant, Latte, Litho, X-Process, Crop, Rotate, Mirror, Straighten, Vignette, Contrast, Exposure, Auto color, Shadows, Vibrancy, among other settings that can be used to adjust picture images.

### **View Images**

---

In the picture interface, click on an album to view images

In the photo album, scroll the picture towards left to view the next picture or towards right to view the previous one.

### **Crop Pictures**

---

If you want to adjust the size of the picture, use the crop tools. Once the arrow appears, pinch your fingers in or out to adjust the size. If you want to adjust the image and keep its proportion, please hold down any of the four corners of the image and adjust accordingly.

# Music

## Open Music

---

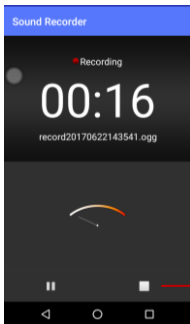
Application Menu » Music

## Search Music

---

You may choose to search for music from media folder through artist name, song name, album name. **The following formats are available:** AMR, MIDI, MP3, WAV, and OGG.

# Sound Recorder



The Sound Recorder can record voice or any audio.

You may send any recorded audio via Bluetooth or MMS and also have the option to make any recorded audio the phones default ring tone.

The recorder uses 3GPP and OGG format.

### Record

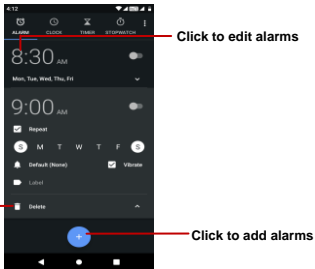
- Keep the phone's microphone near the voice source.
- Click the record button to record the audio.
- Click the stop button to stop recording the audio.

All recordings will be saved in the recording folder in the default music program and can be accessed from the sound recorder application.

**Recording Controls**

# Alarm Clock

1. Click on the Clock icon in the application menu
2. Click set alarm button and enter the alarm clock set interface where you may delete and edit alarms



## Google Play

Google Play allows you to download music, movies, and even games. Click the Play icon to sign in with your Google account.



Search and select between different Play Store categories

# Settings



## Wi-Fi

- **Settings » network & Internet » Wi-Fi** to power on. When on, the Wi-Fi will automatically search for available networks. Any unsecured network can be used directly and any secured network requires a password or credentials prior to connection.



## Connected devices

- Press the switch to power on Bluetooth. Once on, the Bluetooth will automatically scan for any nearby open equipment .You can also use Cast ,Printing and check Received files.



## Apps & notifications

- Press the check recently opened apps and manage notifications options.



## Battery



- General power usage



## Display

Brightness, Auto rotating screen, Wallpaper, Screen Timeout



## Sound

This option sets the phone tone settings for receiving calls and notifications. Some of the settings include:

- Vibrate, volume, ring tones, ring tones notification, dial touchpad, and haptic feedback and tones



## Storage

- View the phone memory usage.



## Security & location

Set up screen locks: Use slide, face/voice unlock, pattern, PIN or password to lock the screen.

- Pattern: The first time there will be simple unlock instructions and examples. Click “next step” to continue the security pattern step.
- PIN: Enter PIN number to unlock the screen.
- Password: Use password to unlock the screen

*You may stop the security feature at any time.*

### **Set up SIM card PIN lock**

- SIM card PIN (Personal Identification Number) is used to prevent unauthorized use of SIM card.

To change a blocked PIN code, you will need to unlock the SIM lock then go to the Change Password screen. The phone will automatically prompt you enter the old PIN code and ask to enter a new PIN code twice. The phone will then prompt you that the change was successful. If you enter the PIN incorrectly three times, the SIM and PIN codes will be automatically locked. You will need the PUK code to unlock the phone which is available through your service provider. If you enter the PUK code incorrectly 10 times, the SIM card will be permanently locked. Please see your service provider for a new SIM card.

- Password visible – Make the password visible when it’s typed.
- Use security credentials - Allow applications to visit security credentials or other credentials.
- Mobile Network Location - Use wireless services to find locations in applications.

- When using the GPS, power on to set satellite positioning for accuracy.



### **Accounts**

- Add accounts,include Duo、Exchange、Google、Personal(IMAP)、Personal(POP3)



### **Accessibility**

- Power button ends call and auto rotate screen
- Speak Passwords and large text



### **Google**

- Google account and google services



### **DuraSpeed**

- DuraSpeed helps boost the foreground APP by restricting background APPs;some notifications may be postponed or not received.



## **System**

### **Language and Input**

- Language – Change the language of the phone.
- Custom Dictionary - Add or delete words to the custom dictionary.
- Keyboard Settings – Haptic vibration, Haptic tones, Capitalizing, Speech Input, Inputting words, Predictive text function, Auto-Text, Input keyboard method

### **Gestures**

- Jump to camera
- Prevent ringing

### **Date & Time**

- Date and Time adjustment.
- Time Zone - Select Time Zone according to where your location.
- Select Date Format - There are 3 kinds of formats you can choose from:

Month-Day-Year, Day-Month-Year and Year-Month-Day, and Year-Month-Day which is the default setting

### **Backup**

- Backup Data – Will back up all application data, WLAN passwords, and other settings to **Google**'s servers
- Restore to Factory Settings - Clear all data stored on the phone.

### **Reset options**

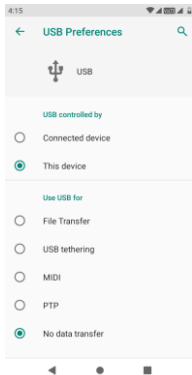
- DRM reset; reset Wi-Fi, mobile & Bluetooth ; reset app preferences ; Erase all data

### **About phone**

- Phone information status and build number

## **Storage**

Connect the phone with the USB cable provided. Once connected, a connection interface will appear. In the connection mode interface, select MTP and turn on from the connection screen to be able to transfer files. Other storage options are also available.



Some system settings, hardware, and UI options may vary depending on final version.

## **Regulatory Information**

---

### **FCC Rules Compliance**

#### **(United States Federal Communications Commission)**

This mobile phone complies with part 15 of the FCC Rules. Operation is subject to the following two conditions: (1) This device may not cause harmful interference, and (2) this device must accept any interference received, including interference that may cause undesired operation.



This mobile phone has been tested and found to comply with the limits for a Class B digital device, pursuant to Part 15 of the FCC Rules. These limits are designed to provide reasonable protection against harmful interference in a residential installation. This equipment generates uses and can radiate radio frequency energy and, if not installed and used in accordance with the instructions, may cause harmful interference to radio communications. However, there is no guarantee that interference will not occur in a particular installation if this equipment does cause harmful interference to radio or television reception, which can be determined by turning the equipment off and on, the user, is encouraged to try to correct the interference by one or more of the following measures:

- Reorient or relocate the receiving antenna.
- Increase the separation between the equipment and receiver.
- Connect the equipment into an outlet on a circuit different from that to which the receiver is connected.
- Consult the dealer or an experienced radio/TV technician for help.

Changes or modifications not expressly approved by the party responsible for compliance could void the user's authority to operate the equipment. The antenna(s) used for this transmitter must not be co-located or operating in conjunction with any other antenna or transmitter.

## **RF Exposure Information (SAR)**

---

This mobile phone meets the government's requirements for exposure to radio waves. The guidelines are based on standards developed by independent scientific organizations through periodic and thorough evaluation of scientific studies. The standards include a margin of safety designed to ensure the safety of all people regardless of their age or health.

The FCC Statement of Exposure to RF and the SAR limit for the United States (FCC) is 1.6 W/kg average for each gram of tissue. This device was tested for typical operations of use on the body, with the back of the phone at 10mm from the body. To maintain compliance with FCC RF exposure requirements, use accessories that maintain a distance of 10mm between the user's body and the back of the phone. The use of belt clips, covers and similar accessories must not contain metallic components in their assembly. The use of accessories that do not meet these requirements may not meet FCC RF exposure requirements and should be avoided.

### **Functioning in the body**

This device was tested for typical operations of use in the body. To comply with RF exposure requirements, a minimum separation distance of 10mm must be maintained between the user's body and the telephone, including the antenna. Third-party accessories such as belt clips, covers and similar accessories used with this device should not contain metallic components, accessories that do not meet these RF exposure requirements and

should be avoided from use on the body. Use only the supplied antenna or an approved antenna.

SAR information on this model phone is on file with the FCC and can be found under the Display Grant section [www.fcc.gov/oet/ea/fccid](http://www.fcc.gov/oet/ea/fccid) after searching - FCC ID: 2A9ZK-TSERIES

### **Additional Information**

---

The information provided in this user manual is subject to change without notice and BLU Products reserves the right to modify the manual at any given time. BLU Products has made every effort to ensure that this user manual is accurate and disclaims responsibility and liability for any inaccuracies or omissions. BLU Products makes no commitment to keep current the user manuals, however, does reserve the right to make improvements to the user manual at any given time without notice.

## **IC Notice**

This device complies with Industry Canada license-exempt RSS standard(s). Operation is subject to the following two conditions:

- (1) this device may not cause interference, and
- (2) this device must accept any interference, including interference that may cause undesired

operation of the device.

IC: 30030-TSERIES

### **IC Radiation Exposure Statement**

Specific Absorption Rate (SAR) refers to the rate at which the body absorbs RF energy. The SAR limit is 1.6 watts per kilogram in Canada that set the limit averaged over 1 gram of tissue. During testing, Mobile Phone (IC: 30030-TSERIES) radios are set to their highest transmission levels and placed in positions that simulate uses against the head, with no separation, and when worn or carried against the torso of the body, with 10mm separation. To reduce exposure to RF energy, use a hands-free option, such as the built-in speaker phone, the supplied headphones, or other similar accessories. Cases with metal parts may change the RF performance of the device, including its compliance with RF exposure guidelines, in a manner that has not been tested or certified. Although this device has been tested to determine SAR in each band of operation, not all bands are available in all areas. Bands are dependent on your service provider's wireless and roaming networks.

Google, Google Play and other marks are trademarks of Google LLC.