

Front



Wi-Fi Smart On/Off Wall Switch
Single Pole or 3-Way Compatible

SWW-SWT-WH

Included in Box:



Switch x1

Specifications:

Power: 120V AC, 60Hz
Wireless Frequency: 2.4GHz
Wireless Standard: IEEE802.11b/g/n
Maximum Load: 150W LED
1500W Incandescent
Temperature Range: 32° F ~ 104° F
Range up to 50 ft radius from
Wi-Fi Access point
For indoor use.

Contents

Section 1. Installation

- Pre-installation preparation
- Installation steps

Section 2. Wiring Diagram

- Wiring instructions
- Single pole and 3-way wiring diagram

Section 3. APP Pairing

- Download the app
- Add a device in your app using Smart Pairing
- Add a device in your app using Manual Pairing

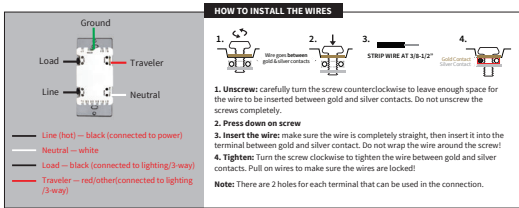
For more details, please refer to the manual.

If you have any questions during installation,
please contact us techsupport@puredeilighting.com

Section 1. Installation

A Few Quick Reminders

A quick note before we go over the wiring schematics. Please do not try installing this device if you are unsure of how electrical circuits operate within your home. As exciting as it is to have a smart switch installed, it can be dangerous and even life-threatening if you do not install this correctly. Please consult a qualified electrician if necessary. With that said, here are a few other warnings we'd like to point out for your safety:



Note before installation

- 1) The In-Wall Smart On/Off Switch must not exceed **150W LED/1500W Incandescent**.
- 2) Works with **traditional 3-way on/off** for 2 location control. It can only be connected with traditional non-smart 3-way/4-way on-off combination, **don't use a smart switch or a smart dimmer!**
- 3) The colors of the wires may not match those in our diagrams so please make sure you've **identified all wires correctly** based on their source, not only by color.
- 4) Please check the original 3-way wiring in your home before installation, and then follow the wiring diagram in the manual.
- 5) Install the smart switch in the electrical box which directly connects to the power **Line** and **Neutral**.
- 6) This switch **requires a Neutral** for installation.
- 7) Not recommended for use with a fan.

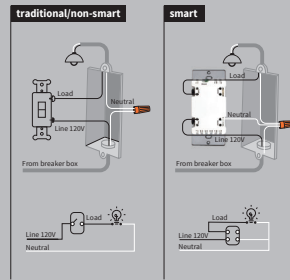
If you have any questions, please contact us at
techsupport@puredeilighting.com

Section 2. Wiring Diagram

Installation

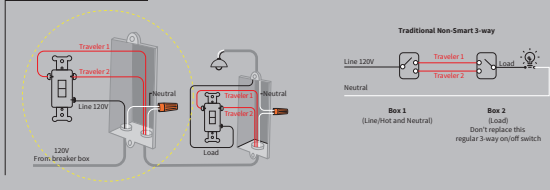
1. Tools Needed: Flat Head Screwdriver.
2. Turn power **OFF** at circuit breaker or fuse box.
3. Remove wallplate.
4. Remove the switch mounting screws.
5. Disconnect the wires and label them after removing the old switch. (Please use our sticker)
6. Carefully remove the switch from the electrical box. (DO NOT disconnect the wires.)
7. There are up to five screw terminals on the smart switch, each of these are marked (Please refer to: **HOW TO INSTALL THE WIRES**)
8. After successful wiring, install the wall plate with the included screws.
9. The Ground was excluded from the diagram to simplify the illustration. Please make sure the ground wires are connected to the switches respectively.

Single-pole Wiring

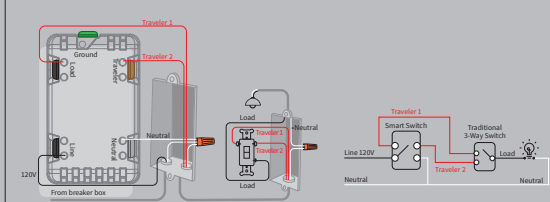


3-pole Wiring

traditional/non-smart 3-way



smart 3-way



Section 3. App Pairing

Connected by
WIZ PRO



Wi-Fi + Bluetooth

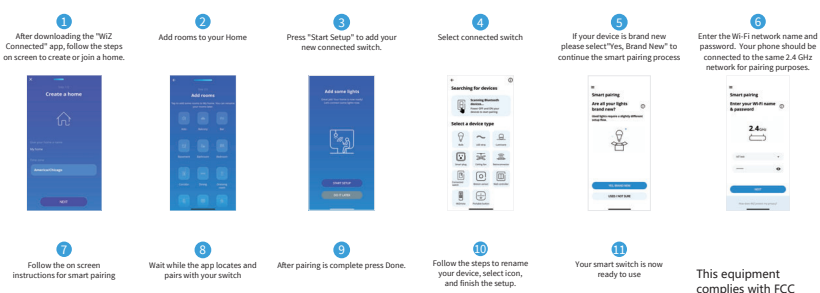
FCC
This device complies with part 15 of the FCC and Industry Canada license-exempt RSS standards. Operation is subject to the following two conditions:
(1) This device may not cause harmful interference, and
(2) this device must accept any interference received, including interference that may cause undesired operation.
FCC NOTE: The manufacturer is not responsible for any radio or TV interference caused by unauthorized modifications to this equipment. Such modifications could void the user's authority to operate the equipment.
— Reorient or relocate the receiving antenna.
— Increase the separation between the equipment and receiver.
— Connect the equipment into an outlet on a circuit different from that to which the receiver is connected.
— Consult the dealer or an experienced radio/TV technician for help.
WARNING: This equipment has been tested and found to comply with the limits for a Class B digital device, pursuant to Part 15 of the FCC Rules. These limits are designed to provide reasonable protection against harmful interference in a residential installation. This equipment generates, uses and can radiate radio frequency energy and, if not installed and used in accordance with the instructions may cause harmful interference to radio communications. However, there is no guarantee that interference will not occur in a particular installation. If this equipment does cause harmful interference to radio or television reception, which can be determined by turning the equipment off and on, the user is encouraged to try to correct the interference by one or more of the following measures:
Important note: To comply with the FCC RF exposure compliance requirements, no change to the antenna or the device is permitted. Any change to the antenna or the device could result in the FCC exceeding the RF exposure requirements and void user's authority to operate the device.

CAUTION - PLEASE READ!
This device is intended for installation in accordance with the National Electrical Code and local regulations in the United States, or the Canadian Electrical Code and local regulations in Canada. If you are unsure or uncomfortable about performing this installation consult a qualified electrician.

WARNING - SHOCK HAZARD
TURN OFF THE POWER to the circuit for the switch and lighting fixture at the service panel (circuit breaker) prior to installation.
ALL WIRING CONNECTIONS MUST BE MADE WITH THE POWER OFF to avoid personal injury and/or damage to the switch.

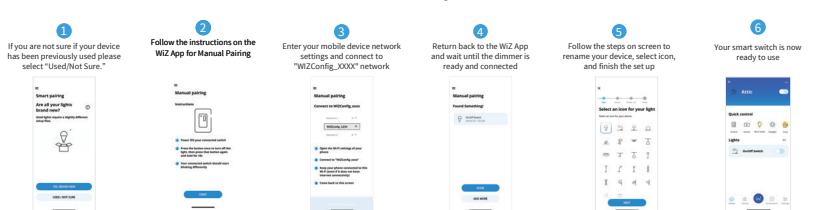
OTHER WARNINGS
Risk of Fire
Risk of Electric Shock
Risk of Burns
V1.0

Smart Pairing



This equipment complies with FCC radiation exposure limits set forth for an uncontrolled environment. This equipment should be installed and operated with minimum distance 20cm between the radiator and your body.

Manual Pairing



WIZ Pro Software Suite



- Grant access permission to different stakeholders
- A clear overview to monitor lights with their mapped location
- Full range of configurations and remote control
- Comprehensive reporting on device status



- An interface dedicated to installers
- Extends capabilities of installation of WIZ Pro products



- For end users to have simple, quick control on a daily basis
- Rich features including Scenes and Rhythms

pro.wizconnected.com

