

Front

**PURE SMART**  
by PureEdge Lighting

**Smart Wi-Fi Wall Dimmer**  
Single Pole or 3-Way Compatible

SWW-DIM-WH

Included in Box:



wiring x1

screws x2

**Specifications:**  
Power: 120V AC, 60Hz  
Wireless Frequency: 2.4GHz  
Wireless Standard: IEEE802.11b/g/n  
Maximum Load: 500W Incandescent  
150W Dimmable CFL/LED  
Temperature Range: 32° F-104° F  
Range up to 50 ft radius from  
Wi-Fi Access point  
For indoor use.

## Contents

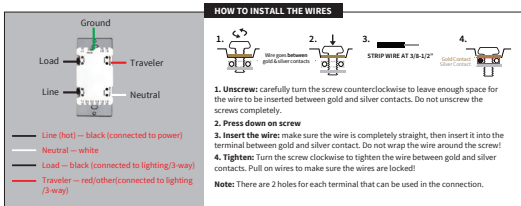
- Section 1. Installation**
  - Pre-installation preparation
  - Installation steps
- Section 2. Wiring Diagram**
  - Wiring instructions
  - Single pole and 3-way wiring diagram
- Section 3. APP Pairing**
  - Download the app
  - Add a device in your app using Smart Pairing
  - Add a device in your app using Manual Pairing

For more details, please refer to the manual.  
If you have any questions during installation,  
please contact us [techsupport@pureedge-lighting.com](mailto:techsupport@pureedge-lighting.com)

## Section 1. Installation

### A Few Quick Reminders

A quick note before we go over the wiring schematics. Please do not try installing this device if you are unsure of how electrical circuits operate within your home. As exciting as it is to have a smart switch installed, it can be dangerous and even life-threatening if you do not install this correctly. Please consult a qualified electrician if necessary. With that said, here are a few other warnings we'd like to point out for your safety:



### Note before installation

- The In-Wall Smart On/Off Switch must not exceed **150W LED/500W Incandescent**.
- Works with **traditional 3-way on/off** for 2 location control. It can only be connected with traditional non-smart 3-way/4-way on-off combinations, **don't use a smart switch or a smart dimmer!**
- The colors of the wires may not match those in our diagrams so please make sure you've identified **all wires correctly** based on their source, not only by color.
- Please check the original 3-way wiring in your home before installation, and then follow the wiring diagram in the manual.
- Install the smart switch in the electrical box which directly connects to the power **Line** and **Neutral**.
- This switch **requires a Neutral** for installation
- Not recommended for use with a fan.

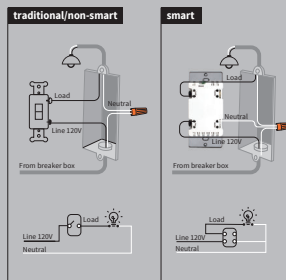
If you have any questions, please contact us at  
[techsupport@pureedge-lighting.com](mailto:techsupport@pureedge-lighting.com)

## Section 2. Wiring Diagram

### Installation

- Tools Needed: Flat Head Screwdriver.
- Turn power **OFF** at circuit breaker or fuse box.
- Remove wallplate.
- Remove the switch mounting screws.
- Disconnect the wires and label them after removing the old switch. (Please use our sticker)
- Remove the dimmer from the electrical box. (DO NOT disconnect the wires.)
- There are up to five screw terminals on the smart dimmer, each of these are marked (Please refer to: HOW TO INSTALL THE WIRES)
- After successful wiring, install the wall plate with the included screws.
- The Ground was excluded from the diagram to simplify the illustration. Please make sure the ground wires are connected to the switches respectively.

### Single-pole Wiring

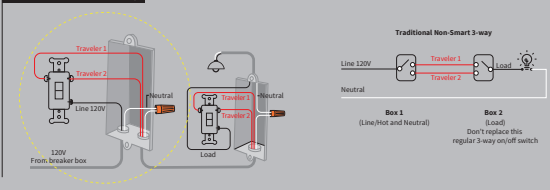


### NOTE:

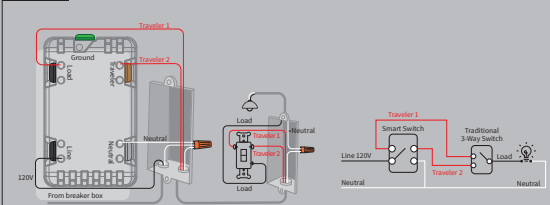
- Neutral required.** If the electrical box does not have a Neutral, please stop! Connect the **white wire to neutral terminal** (use the white jumper that is included in the packaging.)
- Before the old switch is detached, please identify the **common terminal**.
- Only work with a **traditional non-smart 3-way on/off** for 2 location control. It can only be connected with a traditional non-smart 3-way on/off switch, **Not for use with a smart switch or smart dimmer.**

### 3-pole Wiring

#### traditional/non-smart 3-way



#### smart 3-way



## Section 3. App Pairing

Connected by  
**WIZ PRO**



Wi-Fi + Bluetooth

[pro.wizconnected.com](http://pro.wizconnected.com)

### Smart Pairing

- Please scan the QR code to download the application "WIZ Connected".
- You may also find the WIZ app in the Apple App Store or the Google Play Store under "WIZ Connected".
- After you download the WIZ Connected App and register a new account, please follow the instructions below to set up your smart switch.

**For WIZ Pro Dashboard:** Once WIZ Pro Dashboard account and home are created before starting commissioning in the WIZ app. Please create an account on WIZ Pro Dashboard. Then create your home and location. After doing so, you may proceed to create an installation in the dashboard to go to "settings" and then the "newbars" tab. By clicking on the "newbars" button you will be able to generate an invitation to access the dashboard location in the WIZ app. From there you can proceed with commissioning in the WIZ app but also have the added functionality of the dashboard desktop application.

- After downloading the "WIZ Connected" app, follow the steps on screen to create or join a home.
- Add rooms to your Home
- Press "Start Setup" to add your new connected switch.
- Select connected switch
- If your device is brand new please select "Yes, Brand New" to continue the smart pairing process
- Enter the Wi-Fi network name and password. Your phone should be connected to the same 2.4 GHz network for pairing purposes.
- Follow the steps on the screen for smart pairing
- Wait while the app locates and pairs with your dimmer
- After pairing is complete press Done.
- Follow the steps to rename your device, select icon, and finish the setup.
- Your smart dimmer is now ready to use

This equipment complies with FCC radiation exposure limits set forth for an uncontrolled environment. This equipment should be installed and operated with minimum distance 20cm between the radiator & your body.

**FCC**  
The device complies with part 15 of the FCC and Industry Canada license-exempt (RSS standard). Operation is subject to the following two conditions:  
(1) This device may not cause harmful interference, and (2) this device must accept any interference received, including interference that may cause undesired operation.  
**FCC NOTE:** The manufacturer is not responsible for any radio or TV interference caused by unauthorized modifications to this equipment. Such modifications could void the user's authority to operate the equipment.  
— Reconnect or relocate the receiving antenna.  
— Increase the separation between the equipment and receiver.  
— Connect the equipment into an outlet on a circuit different from that to which the receiver is connected.  
— Consult the dealer or an experienced radio/TV technician for help.  
**NOTE:** This equipment has been tested and found to comply with the limits for a Class B digital device, pursuant to Part 15 of the FCC Rules. These limits are designed to provide reasonable protection against harmful interference in a residential installation. This equipment generates, uses and can radiate radio frequency energy and, if not installed and used in accordance with the instructions may cause harmful interference to radio communications. However, there is no guarantee that interference will not occur in a particular installation. If this equipment does cause harmful interference to radio or television reception, which can be determined by turning the equipment off and on, the user is encouraged to try to correct the interference by one or more of the following measures:  
**Important note:** To comply with the FCC RF exposure compliance requirements, no change to the antenna or the device is permitted. Any change to the antenna or the device could result in the device exceeding the RF exposure requirements and void user's authority to operate the device.

**CAUTION - PLEASE READ!**  
This device is intended for installation in accordance with the National Electric Code and local regulations in the United States, or the Canadian Electrical Code and local regulations in Canada. If you are unsure or uncomfortable about performing this installation consult a qualified electrician.

**WARNING - SHOCK HAZARD**  
**TURN OFF THE POWER** to the circuit for the switch and lighting fixture at the service panel (circuit breaker) prior to installation.  
**ALL WIRING CONNECTIONS MUST BE MADE WITH THE POWER OFF** to avoid personal injury and/or damage to the switch.

**OTHER WARNINGS**  
Risk of Fire  
Risk of Electrical Shock  
Risk of Burns  
V1.0

### WIZ Pro Software Suite

- WIZ Pro Dashboard**
  - Grant access permission to different stakeholders
  - A clear overview to monitor lights with their mapped location
  - Full range of configurations and remote control
  - Comprehensive reporting on device status

### WIZ Pro Setup

- An interface dedicated to installers
- Extends capabilities of installation of WIZ Pro products

### WIZ app

- For end users to have simple, quick control on a daily basis
- Rich features including Scenes and Rhythms

[pro.wizconnected.com](http://pro.wizconnected.com)

