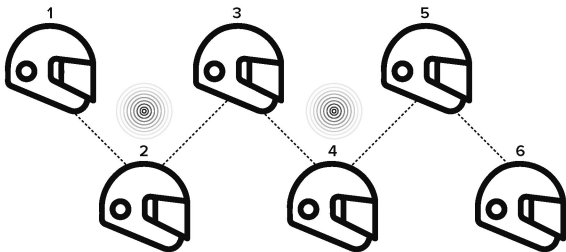


One-key-networking of Multiple GX10s

Automatic pairing steps (take 6 GX10 units for instance)

- 1) Power on all the 6 GX10 intercoms (**123456**), hold the **M** buttons to activate passive pairing mode and the red and blue lights will flash quickly and alternatively;
- 2) Press the **Multifunction button** of any unit (**No.1 unit**), the red and blue lights will flash slowly and alternatively and then No.1 unit will enter automatic pairing mode along with a 'pairing' voice prompt;
- 3) After pairing is successful, there will be a 'Device Connected' voice prompt.



Notice

Due to various use environment, large external interference, and many environmental interference factors, it is recommended to communicate with multiple riders within 1000 meters. Longer the range, more interference there will be, affecting the riding experiences.

Music Sharing (between 2 GX10 Units)

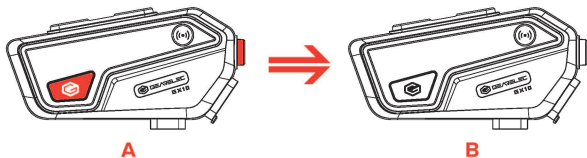
How to turn on

With both GX10 in power on state, music can only be shared in one direction. For example, if you want to share music from GX10 A to GX10 B, then the instructions are as follows:

- 1) Connect A to your phone via Bluetooth (Open a music player and keep music in pause state);
- 2) Pair and connect A to B (Keep both in non-intercom mode);
- 3) After pairing is successful, press and hold the **Bluetooth Talk** and **M buttons** of A for 3 seconds to turn on music sharing, and there will be slow flashing blue lights and a 'Start Music Sharing' voice prompt, indicating music is shared successfully.

How to turn off

In music sharing state, press and hold the **Bluetooth Talk** and **M buttons** of A for 3 seconds to turn off music sharing. There will be a 'Stop Music Sharing' voice prompt.



EQ Sound Settings

In music playback state, press the **M button** to enter EQ setting. Each time you press the **M button**, it will switch to the next sound effect along with a voice prompt of Middle Range Boost/Treble Boost/Bass Boost.

Voice Control

In standby state, press the **M button** to enter voice control mode. The blue light will flash slowly.

Last Number Redial

In standby state, press the **Multifunction button** twice to redial the last number that you called.

Factory Reset

In power on state, hold the **Multifunction, Bluetooth Talk, and M buttons** for 5 seconds. The red and blue lights will be always-on for 2 seconds.

Battery Level Prompt

In standby state, press the **Bluetooth Talk and M buttons** and there will be voice prompt of the current battery level. Also, there will be low battery level prompt.

Flowing Light Mode

In Bluetooth standby state, hold the **M and Volume up buttons** for 2 seconds.

The red flowing light flashes twice when turning on/off flowing light.

Colorful Light Mode

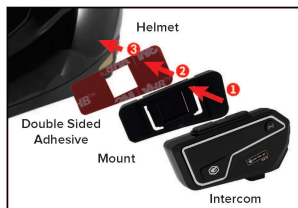
In Bluetooth standby and flowing light on state, press the **M and Volume up buttons** to turn on colorful light mode. The color of the light can be switched in order.

Notice

It will automatically shut down after 15 minutes of standby.

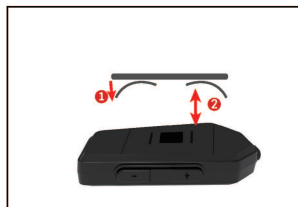
Installation (2 Methods)

Method 1: Install with the adhesive mount



1 Install the intercom into the mount

Mounting Accessories



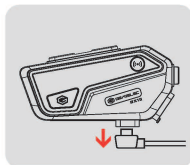
2 Attach the double sided adhesive on the mount



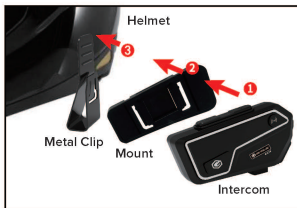
3 Install the intercom with adhesive onto the helmet

Quick removal of the intercom on the helmet

Unplug the headset, hold the intercom with fingers, then push up the intercom, and you can remove the intercom from the helmet.



Method 2: Install with the clip mount



Mounting Accessories

1 Install the metal clip onto the mount



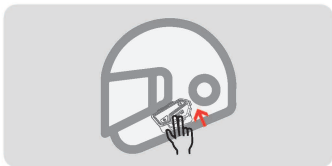
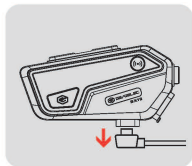
2 Install the intercom onto the mount



3 Clip the mount on the helmet

Quick removal of the intercom on the helmet

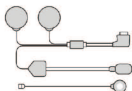
Unplug the headset, hold the intercom with fingers, then push up the intercom, and you can remove the intercom from the helmet.



GX10 Parts & Accessories



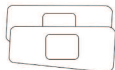
Intercom x1



Microphone &
Speaker Set x1



Mount x1



Single/Double
Sided Adhesives x1



Metal Clip x1



Speaker
Fasteners x4



USB Cable x1



Rectangular
Fasteners x2



Manual x1

Charging instructions

- 1) Before using the Bluetooth intercom, please use the provided charging cable to charge it. Plug the USB Type-C connector into the USB C charging port of the Bluetooth intercom. Connect the USB A connector to a USB A port of the following power supply:
 - A. A USB A port on a PC
 - B. A DC 5V USB output on a power bank
 - C. A DC 5V USB output on a power adapter
- 2) The indicator is an always-on red light when charging and then goes out when fully charged. It takes about 1.5 hours from a low battery level to a full charge.

Parameter

Communication count:	2-8 riders
Working frequency:	2.4 GHz
Bluetooth version:	Bluetooth 5.2
Supported Bluetooth protocol:	HSP/HFP/A2DP/AVRCP
Battery type:	1000 mAh Rechargeable lithium polymer
Standby time:	up to 400 hours
Talk time:	35 hours talk time with lights off 25 hours talk time with lights always-on
Music time:	up to 40 hours
Charging time:	about 15 hours
Power adapter:	DC 5V/1A (NOT included)
Charging interface:	USB Type-C port
Operating temperature:	41-104 °F (5-40 °C)

Precaution

- 1) If the intercom is not used for one month or more, to protect its lithium battery, please charge it every two months.
- 2) The applicable storage temperature of this product is - 20 °C to 50 °C. Do not store it in an environment where the temperature is too high or too low, otherwise the service life of the product will be affected.
- 3) Do not expose the product to open fire to avoid explosion.
- 4) Do not open the device by yourself to avoid short circuit of the main board or battery damage, which will affect normal use. Keep that in mind.

**Wireless Connects You with Me and
Brings Just What Lives Need!**



Made in China

FCC Caution:

This device complies with part 15 of the FCC Rules. Operation is subject to the following two conditions: (1) This device may not cause harmful interference, and (2) this device must accept any interference received, including interference that may cause undesired operation.

Any Changes or modifications not expressly approved by the party responsible for compliance could void the user's authority to operate the equipment.

Note: This equipment has been tested and found to comply with the limits for a Class B digital device, pursuant to part 15 of the FCC Rules. These limits are designed to provide reasonable protection against harmful interference in a residential installation. This equipment generates uses and can radiate radio frequency energy and, if not installed and used in accordance with the instructions, may cause harmful interference to radio communications. However, there is no guarantee that interference will not occur in a particular installation. If this equipment does cause harmful interference to radio or television reception, which can be determined by turning the equipment off and on, the user is encouraged to try to correct the interference by one or more of the following measures:

- Reorient or relocate the receiving antenna.
- Increase the separation between the equipment and receiver.
- Connect the equipment into an outlet on a circuit different from that to which the receiver is connected.
- Consult the dealer or an experienced radio/TV technician for help.

The device has been evaluated to meet general RF exposure requirement. The device can be used in portable exposure condition without restriction.