



Operational Manual

MODEL NAME: INTUITION DISPLAY
MODEL NO.: ID001
VERSION NO.: V0
TRADE MARK: CYC
COMPANY: CYC MOTOR LTD.

AUTHOR: MR. FELIX / MR. PAUL LAI
Counter Checking: MR. HUNTER
DATE: AUG. 25, 2023



Product Overview

The product under concern which is the smart display for the ebike, it displays the parameters of battery, walk modes, controller and torque sensors as well, and also equipped with Bluetooth chip that enable user to turn on the ANT+ lights, access to the phone app wirelessly.

This product (DUT) Device Under Test unit, which only built-in electronic components and solder parts and coin size battery, Bluetooth chip inside and LCD display, the only accessory which is the key-knob, that enable user to access the display.

The main power supply of the device that connects to the chargeable battery outside.



Product diagram

Back view





Front view



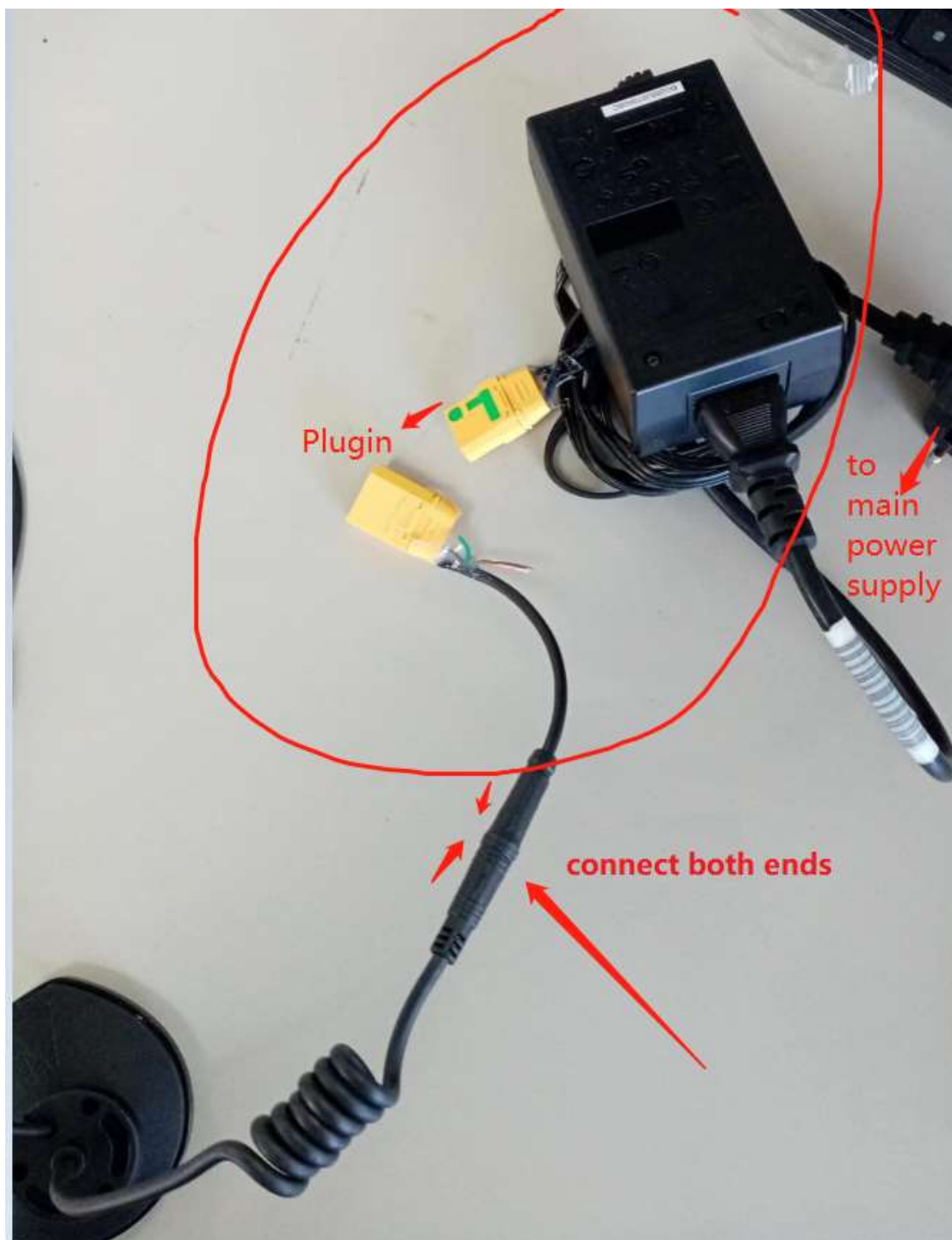


Key-knob (Power On Button)





Power Supply





Button (Key)

Side v



Front view 1





Front view 2



Power On



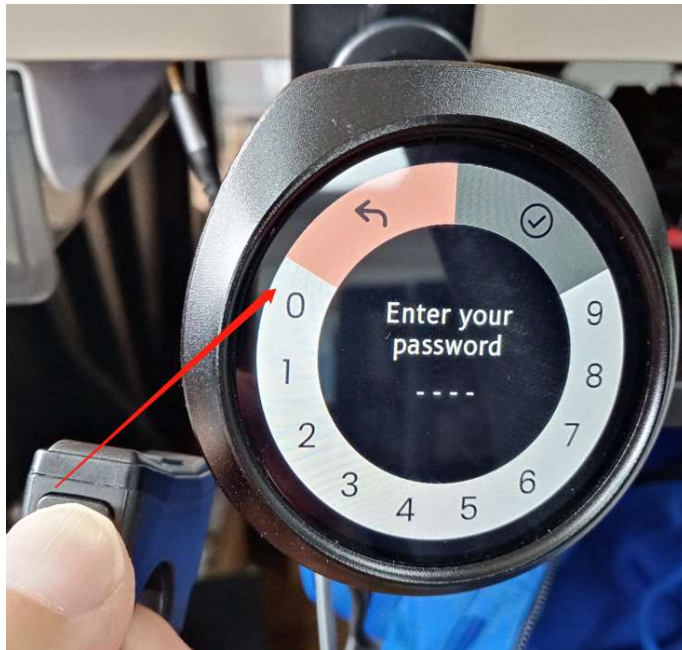


Press "POWER" button and hold



When Logo appear, release finger

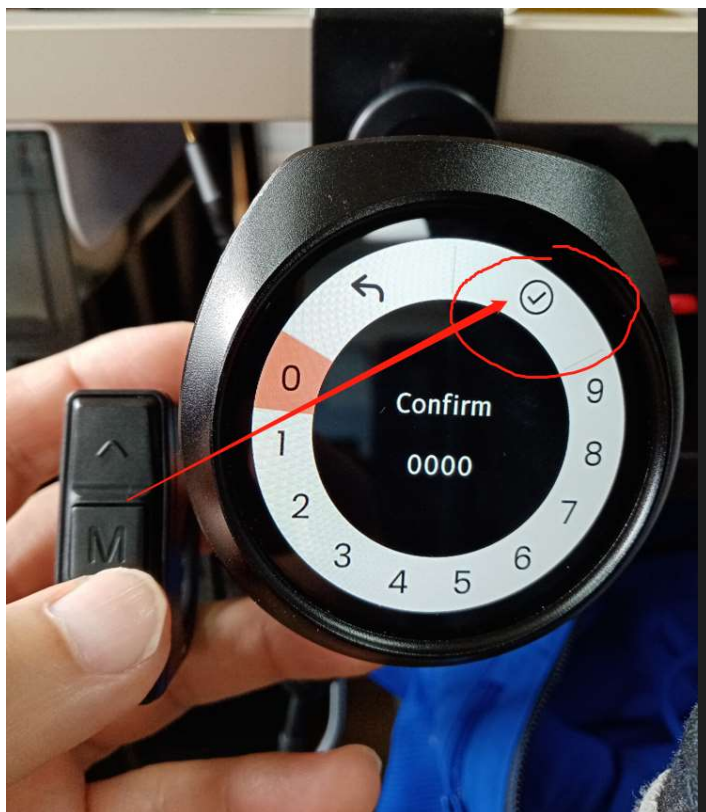
Release finger when Logo show up.



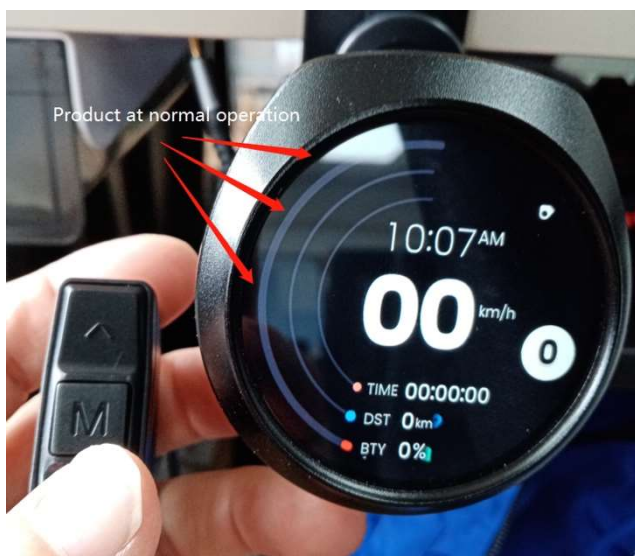
At first time, it needs to be enter password, say "0000",
By pressing UP or DOWN button to select the digits and press "M" button if the digit want to be entered.



Password confirmation



By navigating the UP or DOWN button and locate the orange mark on the “circle tick” then press “M” button to confirm the password setting.



Product at normal operating once complete the above procedures.



Joycon User Guide

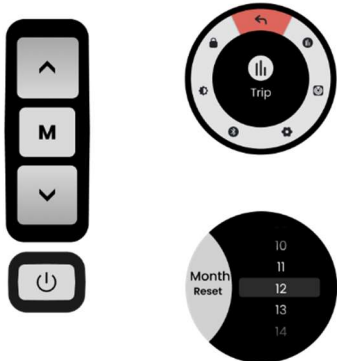
INTUITION
Smart Display System



- Home Page**
- Short Press > Assist Level up 0>1
 - Short Press > Assist Level down 1>0
 - Long Press to switch on Head light
 - Long Press to go to walk mode
 - M Short Press to menu page
 - Long Press to Switch on / Switch off
- Walk Mode**
- Short Press > Leave Walk Mode
 - Use this button as throttle, 6km/h
 - M Leave Walk mode

Joycon User Guide (Menu)

INTUITION
Smart Display System



- Menu**
- M Short Press to Confirm
 - Short Press go anti-clockwise
 - Short Press go clockwise
- Menu Selection**
- M Short Press to Confirm
 - Short Press go upward
 - Short Press go downward
 - Long press go upward continuously
 - Long press go downward continuously



For Fixed 2.4GHz wireless transmission, there's a label marking on the back of the DUT (Device Under Test) and operation procedure are the same as above except It radiates 2.4GHz wireless frequency, once it power on, it starting its 2.4GHz frequency transmission,
Non-stop.





Accessory Part:

The DUT (Device Under Test) the only accessory part which is the key-knob, which is already well connected to the DUT.

END

This device complies with part 15 of the FCC Rules. Operation is subject to the following two conditions: (1) this device may not cause harmful interference, and

(2) This device must accept any interference received, including interference that may cause undesired operation.

Changes or modifications not expressly approved by the party responsible for compliance could void the user's authority to operate the equipment. This equipment has been tested and found to comply with the limits for a Class B digital device, pursuant to Part 15 of the FCC Rules. These limits are designed to provide reasonable protection against harmful interference in a residential installation. This equipment generates uses and can radiate radio frequency energy and, if not installed and used in accordance with the instructions, may cause harmful interference to radio communications. However, there is no guarantee that interference will not occur in a particular installation. If this equipment does cause harmful interference to radio or television reception, which can be determined by turning the equipment off and on, the user is encouraged to try to correct the interference by one or more of the following measures:

- - Reorient or relocate the receiving antenna.
- - Increase the separation between the equipment and receiver.
- - Connect the equipment into an outlet on a circuit different from that to which the receiver is connected.
- - Consult the dealer or an experienced radio/TV technician for help.ct.

This equipment complies with the FCC RF radiation exposure limits set forth for an uncontrolled environment. This equipment should be installed and operated with a minimum distance of 20cm between the radiator and any part of your body.