



# STL-01-BK

---

Dental Monitoring Device

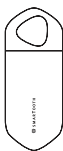
+82 02 518 2842  
contact@smartooth.co  
<https://smartooth.co/>

# Package Contents

## · Package



Smartooth body



Base  
(Built-in Corrector  
in inner mirror)



Disposable probe  
(6 pieces)

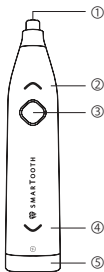
## · Sold separately



1.5V AA Alkaline battery

· Product	SMARTOOTH	· Model	STL-01-BK
· Power Consumption	200mW	· Input	1.5V
· Dimension	155.5 X 35.5 X 34.4(mm) W/O Probe	· Weight	69.2g

## · Functions



- ① Laser output
- ② Status LED
- ③ Power button
- ④ Measurement display LED
- ⑤ Battery holder cap

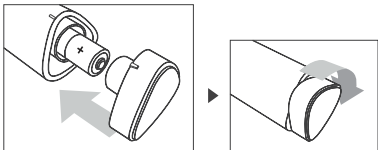
	Color	Explanation
② Status LED	Red Light	20% or less of battery remaining
	Blinks green	Waiting for measurement
	Blinks blue	Waiting for bluetooth connection
④ Measurement display LED	Red Light	Stage3 (Suspicion of caries)
	Yellow Light	Stage2 (Needs care and attention)
	Green Light	Stage1 (Normal)

· If any items are missing or damaged, please contact dealer.

## Installation & Synchronization

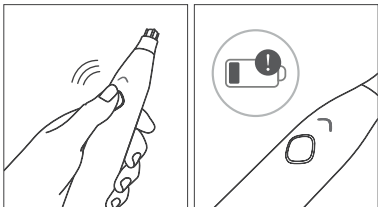
---

### · Battery insertion & replacement



- 1) Remove the lid by turning it counterclockwise.
- 2) Insert the AA battery so that the (+) pole faces out.
- 3) Assemble the lid back by turning it clockwise.

### · Power On & Off

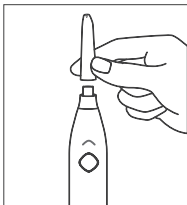


- 1) To turn on the power, push the Power button for 1 second until beep sounds one time.
- 2) To turn off the power, push the Power button for 3 second until beep sounds one time.

\* If it is unused for more than 3 minutes, the power is turned off automatically.

\* When the Status LED displays red, please replace the battery since it means battery level is less than 20%.

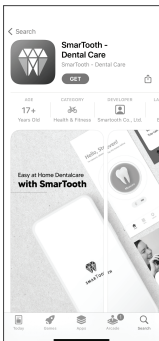
## · Probe Mount



Attach the disposable Probe to the upper part of the body and fix it with the groove direction.

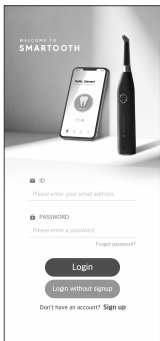
Measurement may be affected if the probe is not mounted correctly.

## · Application Installation



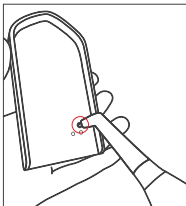
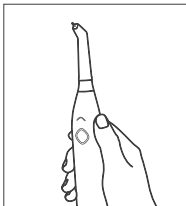
- 1) Access the Appstore. (Access the Play Store in case of Android)
- 2) Search for SmarTooth in the search bar and install the application.

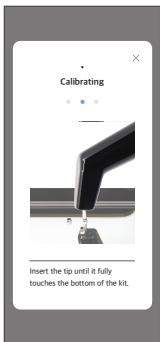
## · Application Synchronization



- 1) Push the power button for 1 second to turn on the power.
- 2) Status LED blinks blue, which is remained until device and application are synchronized.
- 3) Run the application and log in.
- 4) When login is successful, the application scans and is synchronized with the device.
- 5) When synchronization is successful, the application screen changes as shown in the figure and the Status LED blinks green.

## · Calibration





Before you measure the tooth status, you need 'calibration', which is a set of adjustments performed on a sensor tip (probe) and device to make that SmarTooth function as accurately, or error free, as possible.

- 1) When you combine a probe into the body, please wait a moment for the device to recognize the atmosphere and press the 'Next' button for calibration.
- 2) Insert the sensor tip (the bottom side of the probe) vertically into the one of the three holes of the calibration kit inside the mirror.
- 3) When the sensor tip reaches the bottom of the calibration kit, press the 'Next' button again to obtain the calibrated reference.

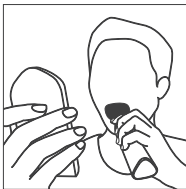
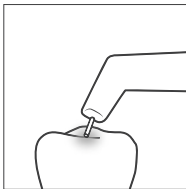
\*Calibration may not be performed properly depending on the mounting condition of the probe.

\*If you calibrate once a sensor tip, the calibrated value remains when you turn off and on the device.

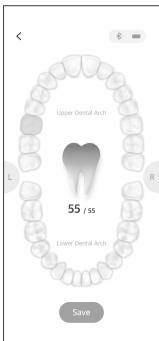
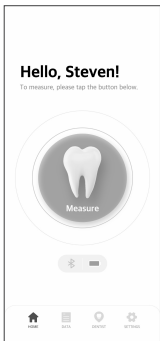
## Quick Start Guide

---

- Measurement (Contact between teeth and device)



## · Measurement (To use application)



- 1) Click "Measure" button on application screen to start measurement.
- 2) After selecting tooth to be measured, position the tip perpendicular to the measurement surface, then the measurement value will be displayed on the screen.

- \* Pressing or scratching with excessive force may damage teeth.
- \* The number below the tooth picture in the center means the highest value and real-time value of the tooth measured currently.

## · Interpretation of Measurement Values

0	11	21
Stage 1	Stage 2	Stage 3

The measurement value ranges from 0 to 99.

0-10 : teeth that is normal.

11-20 : teeth that requires care and attention.

21-99 : teeth that is suspicious of caries.

- \* The measured value is not an absolute value for caries activity, but the higher value indicates the higher possibility of caries activity.
- \* We recommend to visit a dentistry when you have any doubt about your tooth status, even if there is no pain.

## Important Safety Precautions

---

※ Please read the followings carefully and use the device correctly in order to prevent any damage to the user's safety and property.

---

### ⓘ Warning / Caution

- Do not use the product for other purposes.
- Do not stare directly into the laser.
- Use leak-proof battery.
- Remove the battery when the device is not used for a long time.
- Do not use rechargeable battery.
- Dispose the used battery according to regulation.
- Do not change the battery with wet hands.
- Do not use power supply.
- Do not apply the voltage other than that specified on the product.
- Do not use the probe for other purpose.
- To check whether probe is mounted properly, pull the probe.
- Do not bite tip sensor during measurement.
- Excessive force to the tooth during measurement may break the tip.
- Do not wash the product under running water or immerse it in water.

### ⓘ Note

- Be careful not to apply strong impact.
- Avoid exposure to heat, including prolonged exposure to direct sunlight.
- Brush teeth before measuring for accurate measurement.
- Use this product only for oral monitoring.
- If the status LED is display red, replace the batteries. If the red light continues to blink without battery replacement, the device may be turned off during operation.
- If multiple users share one device, use one probe per user.
- The used probe should be disposed without washing to keep or reuse.
- Do not disassemble the probe.
- Keep the probe out of the reach of children.
- The opened probe should be used immediately.
- Do not disinfect probes and products.

---

※ For more details, please refer to the pdf file of SmarTooth User Manual.



---

※ The revised User Manual does not contain the FCC required warning statements.

---

- a. Rule Part 15.19(a)(3): This device complies with part 15 of the FCC Rules. Operation is subject to the following two conditions:
- (1) This device may not cause harmful interference.
  - (2) This device must accept any interference received, including interference that may cause undesired operation.
- b. Rule Part 15.21: The users manual or instruction manual for an intentional or unintentional radiator shall caution the user that changes or modifications not expressly approved by the party responsible for compliance could void the user's authority to operate the equipment.

NOTE: This equipment has been tested and found to comply with the limits for a Class B digital device, pursuant to part 15 of the FCC Rules. These limits are designed to provide reasonable protection against harmful interference in a residential installation. This equipment generates, uses and can radiate radio frequency energy and, if not installed and used in accordance with the instructions, may cause harmful interference to radio communications. However, there is no guarantee that interference will not occur in a particular installation. If this equipment does cause harmful interference to radio or television reception, which can be determined by turning the equipment off and on, the user is encouraged to try to correct the interference by one or more of the following measures:

- Reorient or relocate the receiving antenna.
- Increase the separation between the equipment and receiver.
- Connect the equipment into an outlet on a circuit different from that to which the receiver is connected.
- Consult the dealer or an experienced radio/TV technician for help.