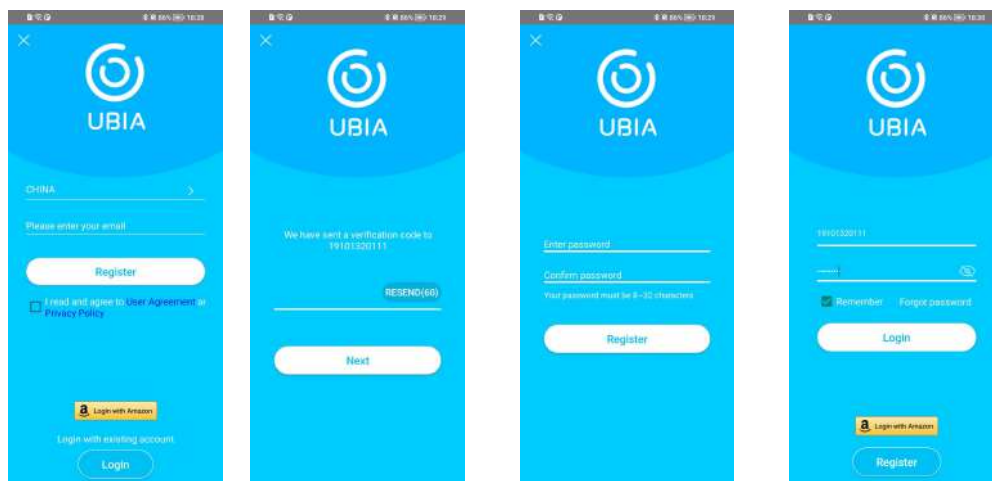


I. Scan below QR code and download UBOX APP. (Select Android or Iphone accordingly)



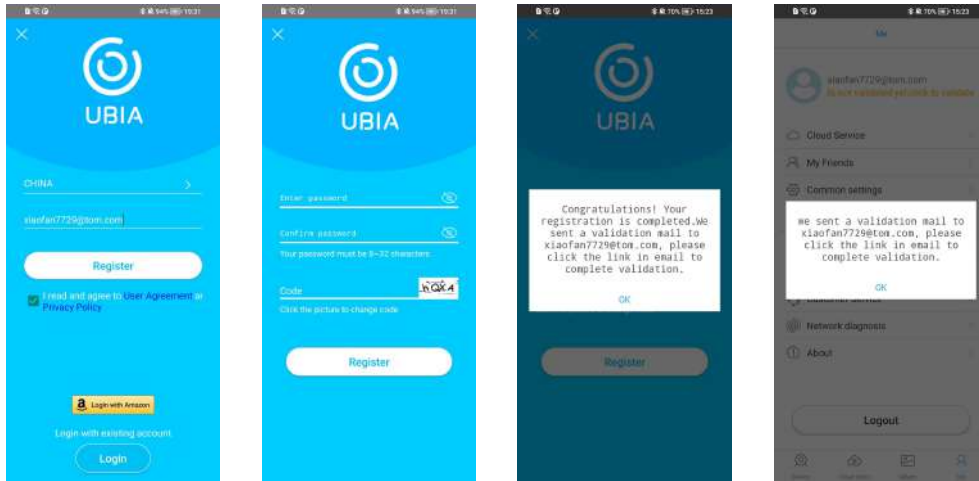
II. Register Page.

1. Registered by mobile phone: Select your country region, input your mobile phone number. Check the user agreement and privacy policy, then click to register. After receiving the verification code on mobile phone, fill in the next step, set an 8-32 digit password. Then mobile phone account is registered successfully!

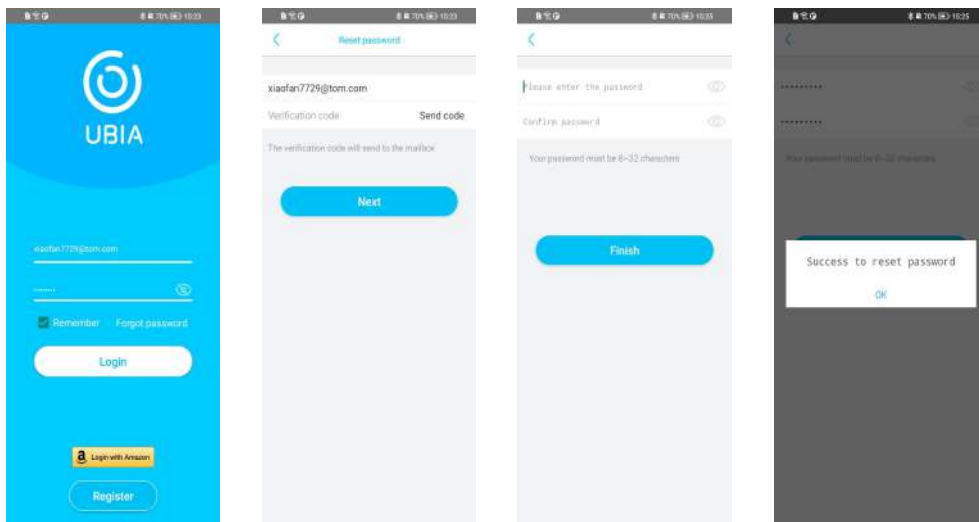


2. Registered by email: Select your country region, enter the mobile phone number. Check the user agreement and privacy policy, then click to register. Set an 8-32 digit password, enter the picture characters. A verification code will be sent if registered successfully. Click the email verification link to accomplish verification.

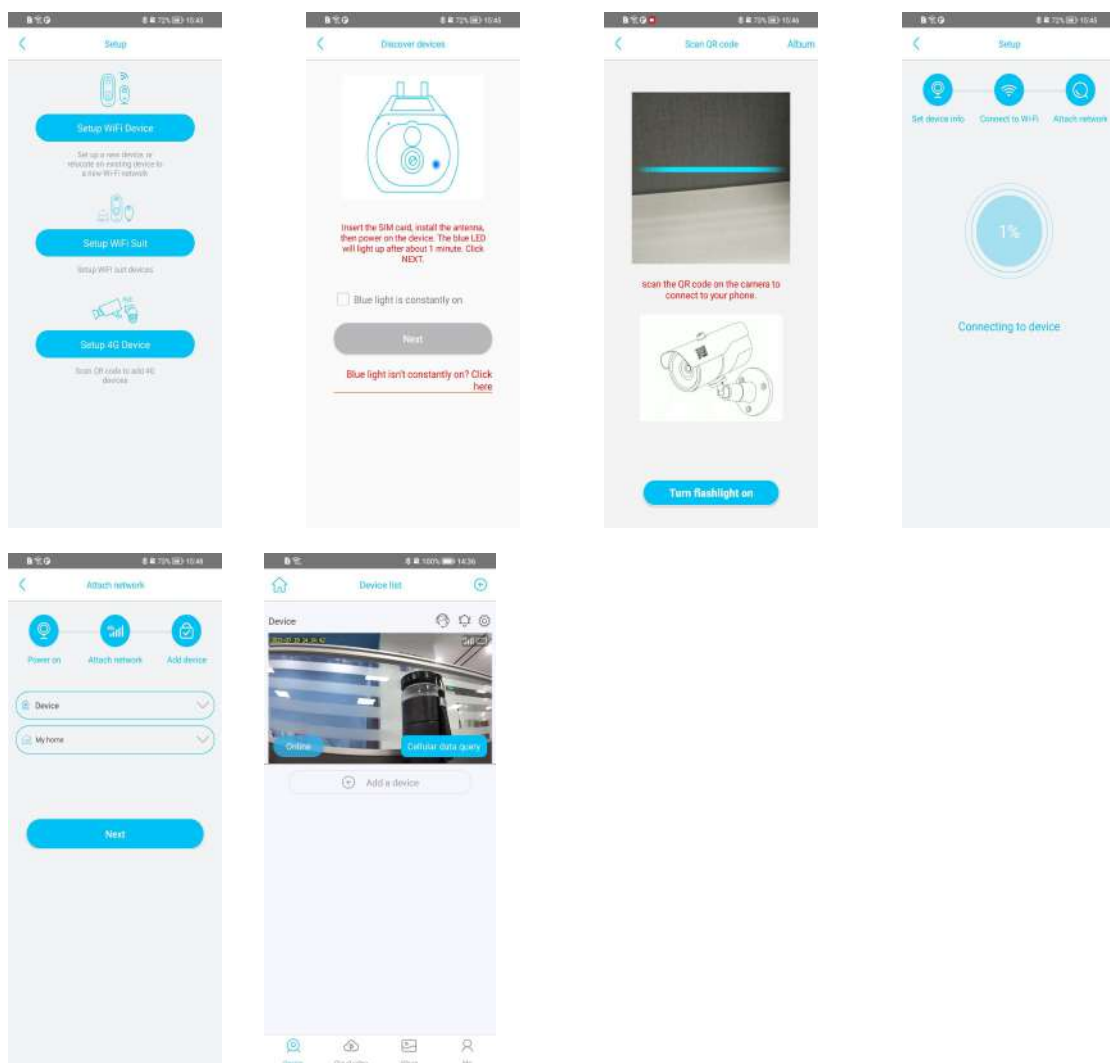
If you have not received the verification code, please click the yellow font on "Me" page to send verification again. The yellow font will disappear automatically after the verification is successful.



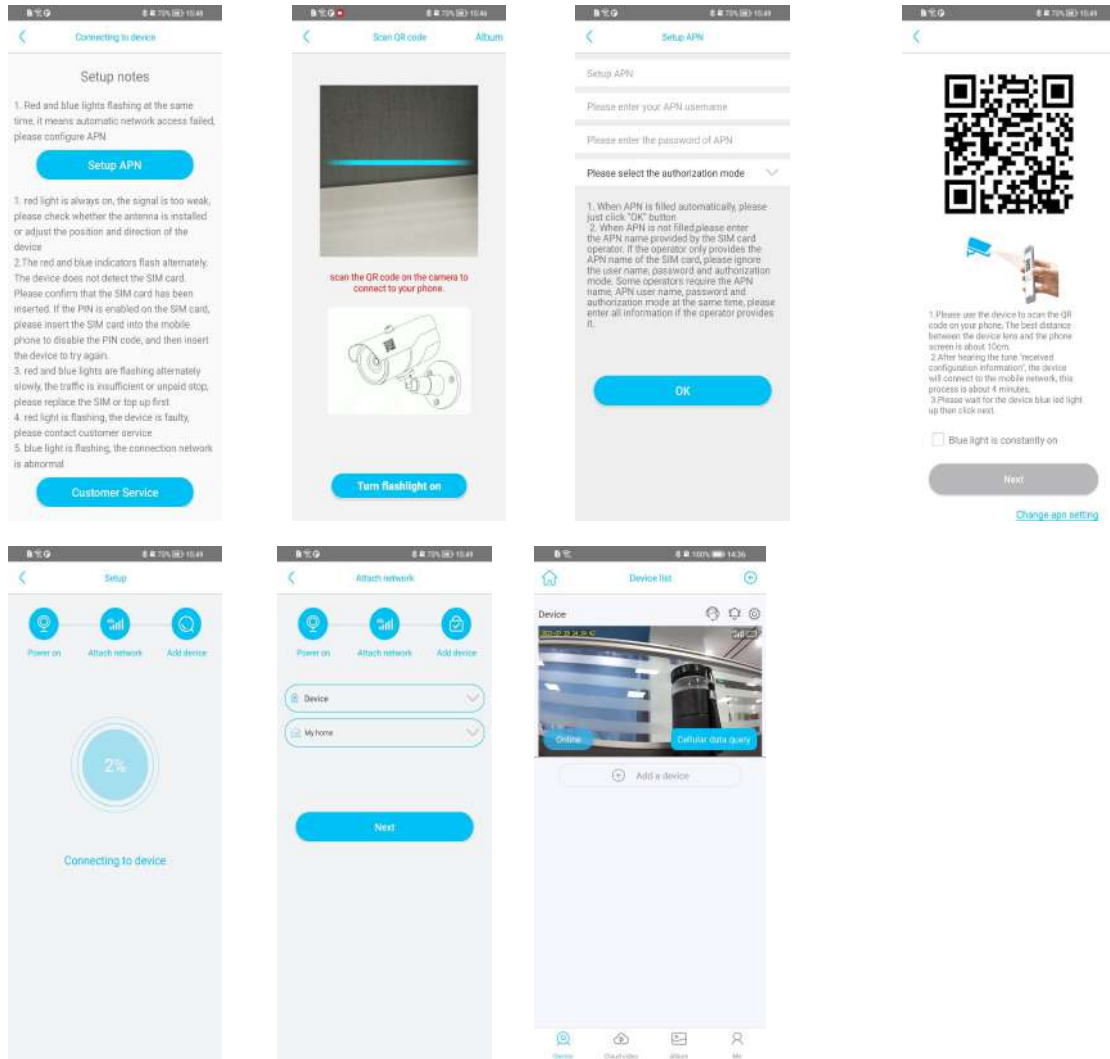
3. Forgot password: Click “Forgot password”, enter account number in the reset page and send verification code. Fill in the next step after verification, then reset password, and it will jump to the login page after the setting is successful.



4. Add 4G device. Check the blue indication light, if it's constantly on, select it on APP and click next step. Use app to scan QR code on the device. Setup device name and address after connection. Click next step, it will jump to device list and available for browse.



If blue indication light is not working, please check the setup notes and setup APN, or you can contact with customer service. If you are from other countries, there is a flicker purple indication light, and fail to networking automatically. Scan the QR code on the device to setup APN. Use the camera to scan the QR code on APN. After hear indication of configuration, enter connection setup. Input device name and address after connected successfully. Then accomplish setup and jump to device list and available for browse.



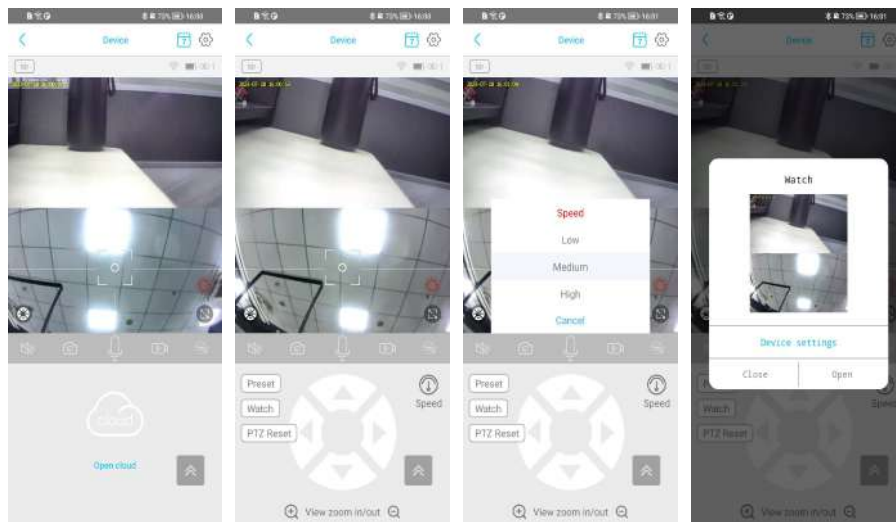
IV Enter preview page of bullet camera.

Pic 1 Preview page of bullet camera.

Pic 2 Click PTZ button on the left of preview page, enter display of PTZ setup.

Pic 3 Click “speed” to setup PTZ shaking speed of High, Medium, Low.

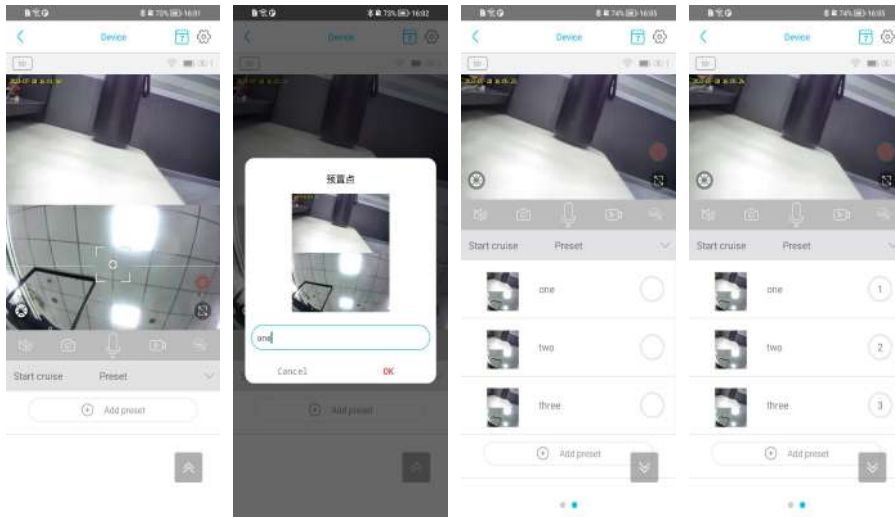
Pic 4 Click “watch” to setup screen. If no setup it shows blank. After clicking “device setting”, it will be as shown in the picture. After clicking “open”, screen image is setup as beginning. After the device enters long-time video recording (or non-sleep mode), it will return to watch status if no person detected within 30 seconds. (note: manually shaking the device will not automatically return to the watching position).



Pic 5 Click Preset, enter preset setup.

Pic 6 Add preset. Click OK and the new added preset will be display on list(Pic 7). 16 presets maximum can be added for cruise.

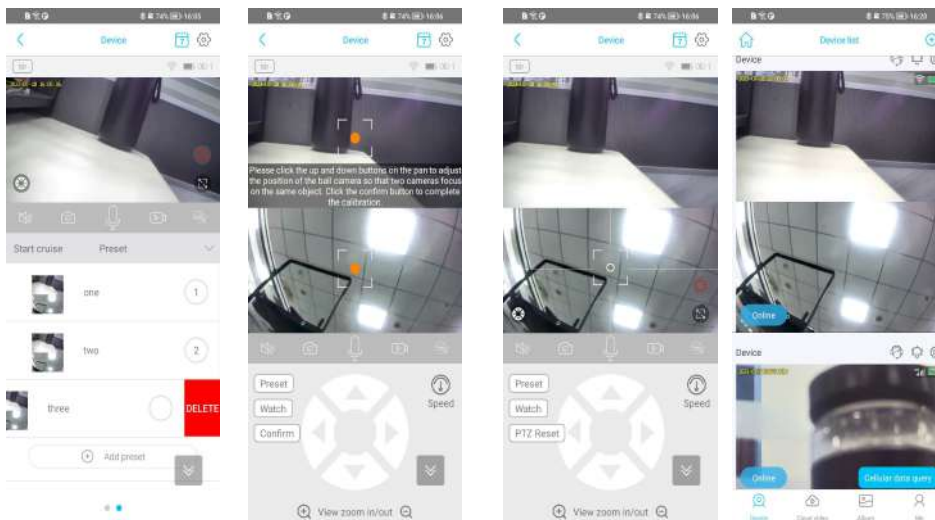
Pic 8 Sort the preset positions according to your needs, click Start Cruise, and enter the cruise video.



Pic 9 After sorting the preset cruise, click the sort button at the end. You can slide left to delete it till the serial number in the button is blank.

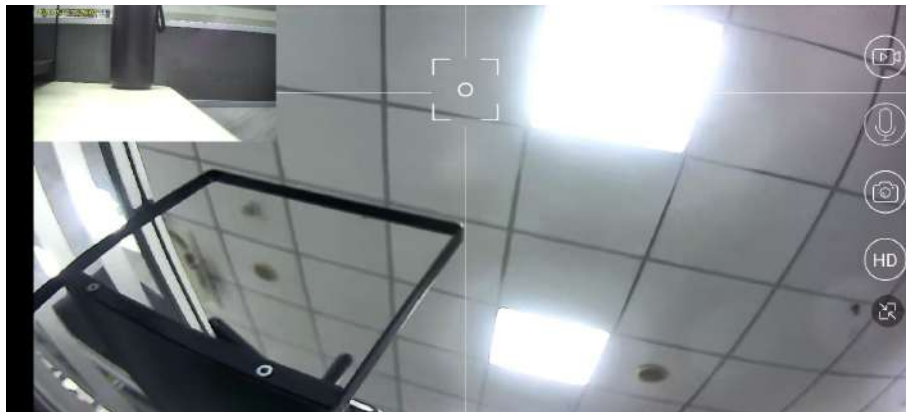
Pic 10 Click PTZ calibration. An orange position mark will appear on the preview page. Press the PTZ shaking button to adjust the position of the sight. Try to adjust the orange button positions of the dome camera and bullet camera to the same position. After clicking to confirm, the image on bullet and dome camera show the same.(as Pic 11)

Pic 12 The device returns from the preview page to the device list, and the thumbnail displays dual screen.



Pic 13 Click the horizontal screen button at right corner of the preview page, then enter the horizontal screen. Picture-in-picture will appear. Click on the focal point, and the dome camera will rotate to the corresponding position.

Pic 14 Double-click the screen to switch the picture-in-picture of display of bullet and dome camera.



V Enter the dual-lense device preview page

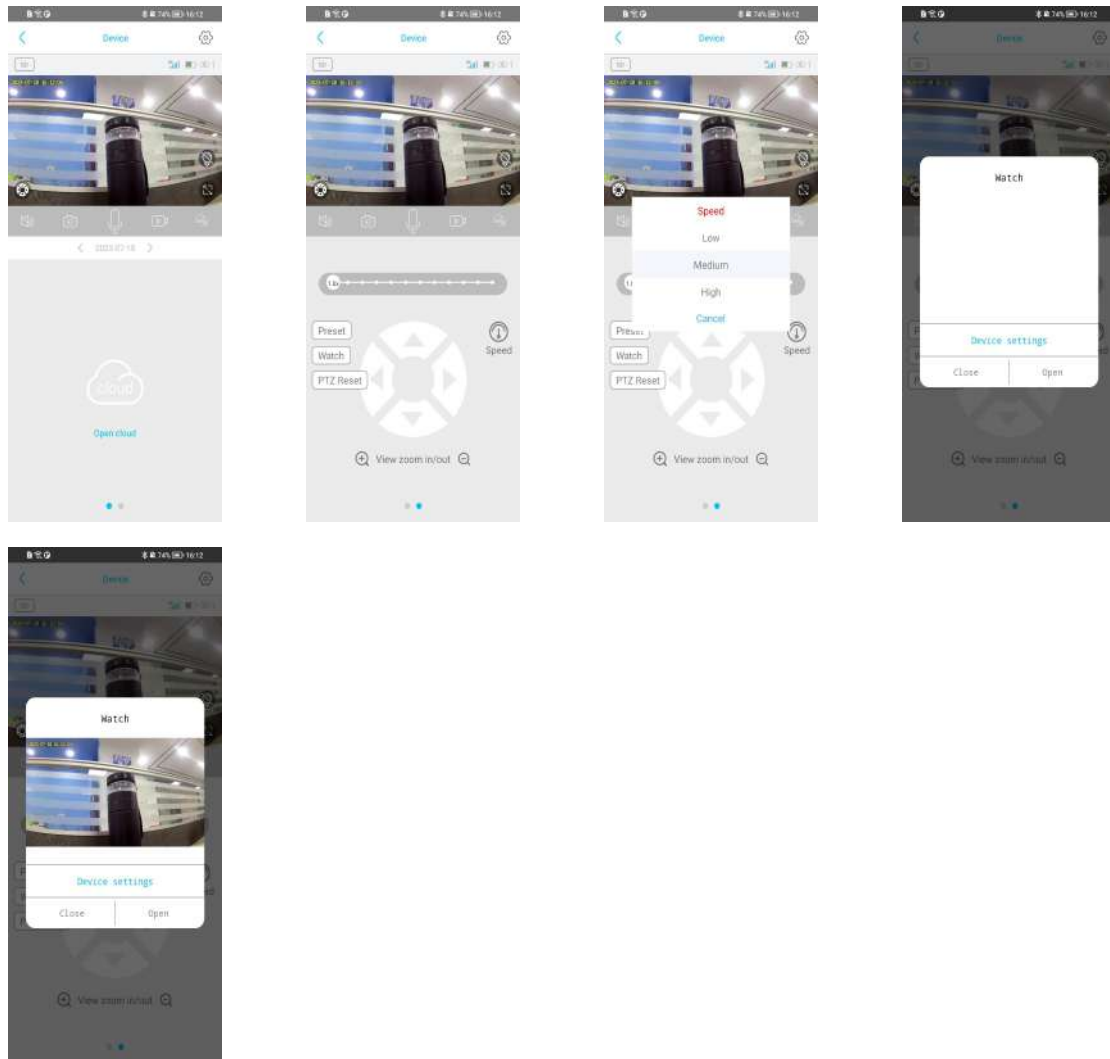
Pic 1 Preview page of dual-lense device

Pic 2 Click the PTZ button at the left corner of the preview page to enter the PTZ setup screen.

Pic 3 Click "Speed" to setup speed of PTZ shaking of high, medium, low.

Pic4 Pic5 Click "watch" to pop up the setup screen. If there is no setup, the display will be blank. After clicking "device setting", it will be as shown in the picture. After clicking "open", if the screen is the starting point of the setting, click "open". After the device enters long-time video recording (or non-sleep), there will be nothing after 30 seconds. When a person is detected, return to the watch position (note: manually shaking the device will not automatically return to the

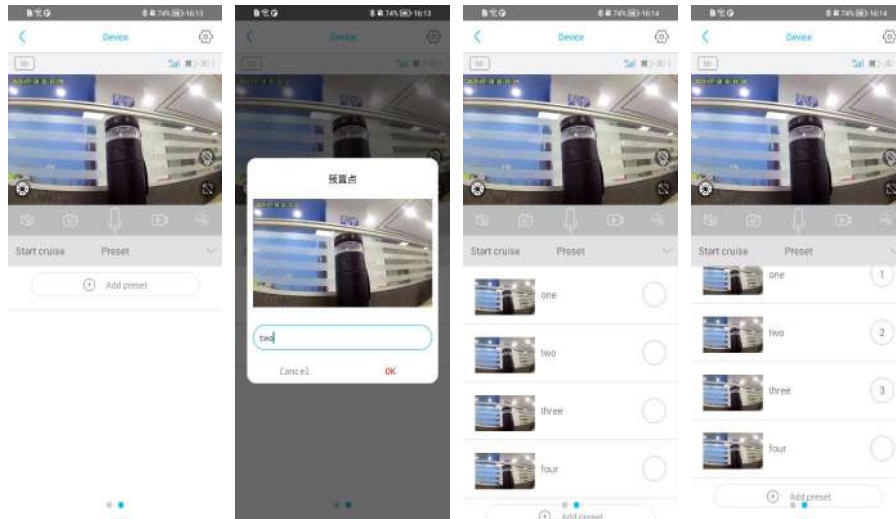
watching position)



Pic 5 Click Preset, enter preset setup.

Pic 6 Click add preset to setup preset. Click OK, the new added will be display on list(As Pic 7). 16 presets maximum can be added for watch.

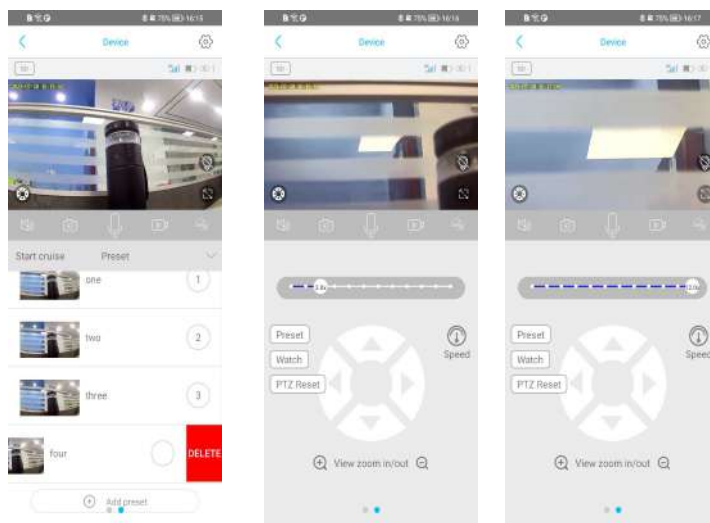
Pic 8 Sort the preset positions according to your needs, click Start Cruise, and enter the cruise video.



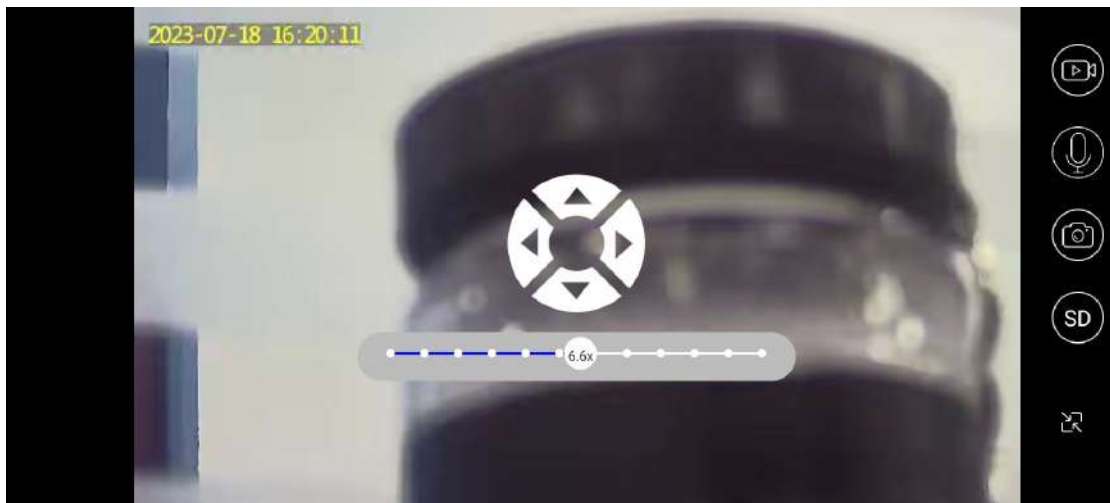
Pic 9 After sorting the preset cruise, click the sort button at the end. Only when the serial number in the button is blank, you can slide left to delete it.

Pic 10 The preview page displays a progress bar, and you can set the screen to switch between short focus and far focus; 3.0 starts to switch between long focus and long focus.

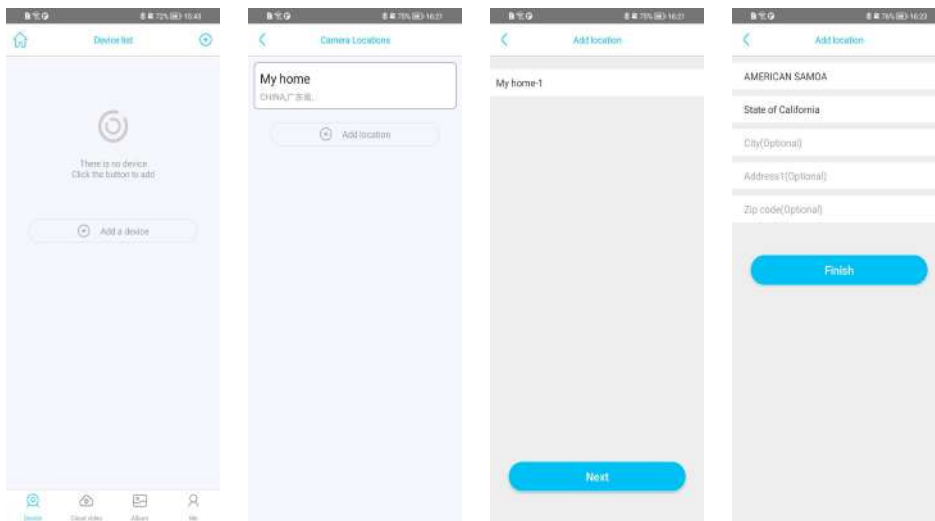
Pic 11 Telefocus can be switched to a maximum of 12 times





Pic 12 After the preview page is turned horizontally, you can also switch between near focus and far focus images.




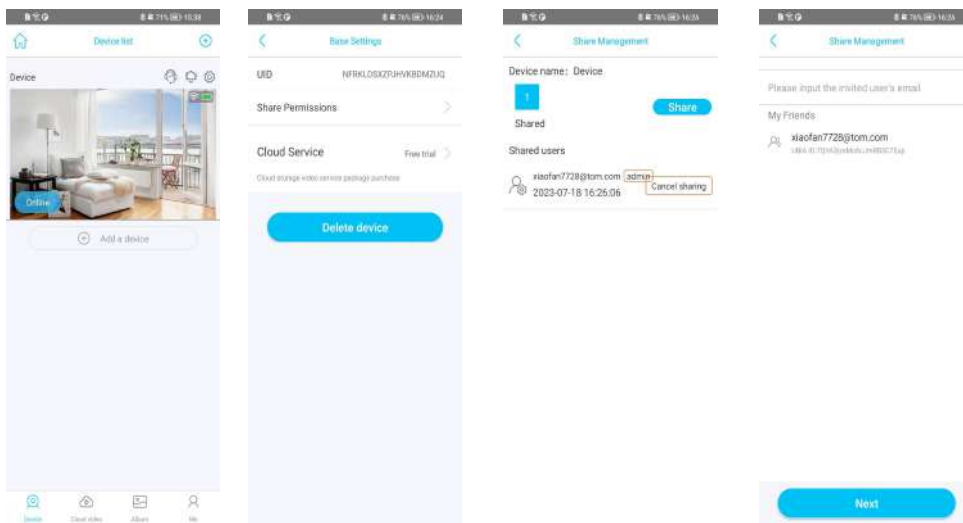
VI Add a family: Click “My home” button in the upper left corner of the page and add a family based on the address;



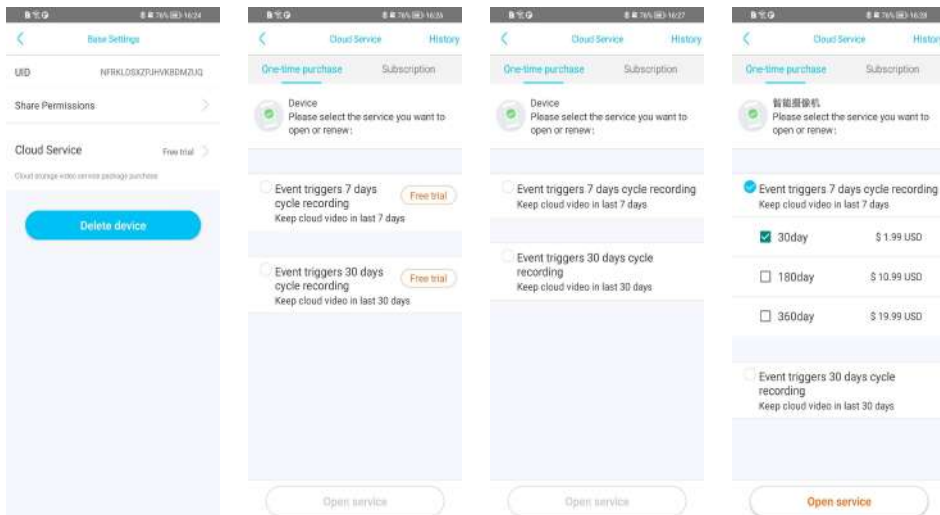
VII Device list and basic settings

Pic 1 Click the customer service button  in the device list. If you have any questions, please contact customer service for consultation; Click the bell button  to turn on/off push notifications.

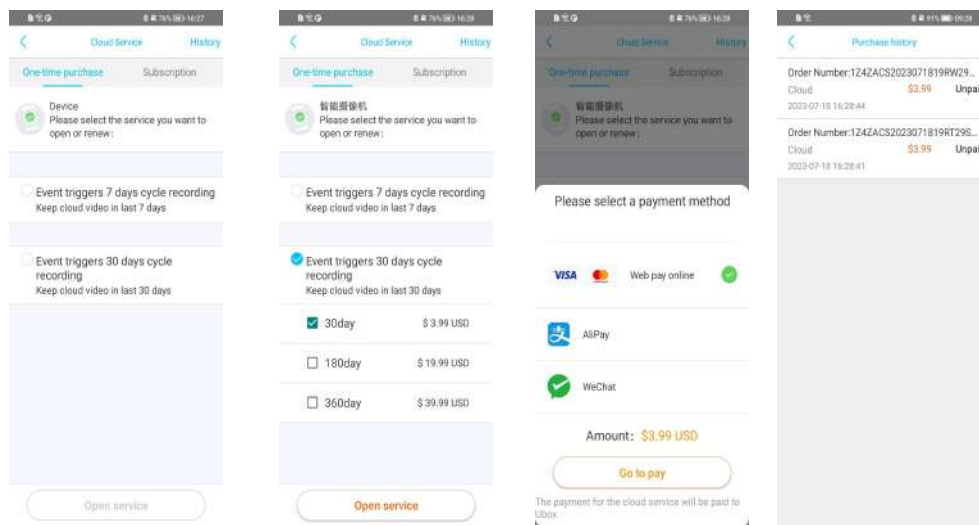
1 Share Management: Click the Settings button  on the device list page, click on sharing permissions to enter sharing management, input the shared account. Or directly select the friend account and click Next, shared successfully. To cancel sharing of a device, click "Cancel Sharing" in the sharing management.



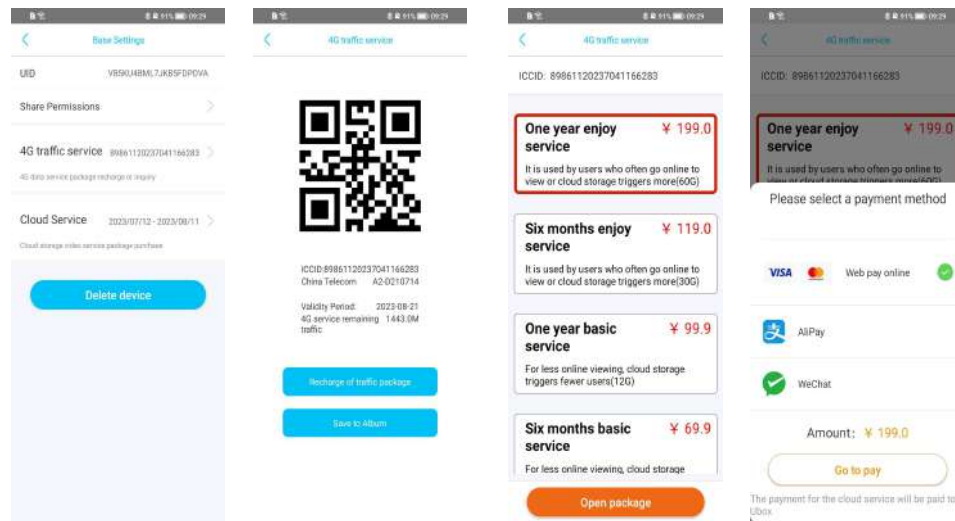
2 Purchase cloud service: On the basic setup page, click Cloud Service to enter the cloud service purchase list. For devices that have not been approved, you can click to activate the service for free as (as below Pic 2) ; It will indicate if expired. 7-day and 30-day cycle recording options will be displayed and you can choose to purchase it or not(as below Pic 3): After purchasing the 7-day service, the upgrade service will be displayed. After clicking the upgrade service and paying, you can enjoy 30 days of cycle recording(as below Pic 4).



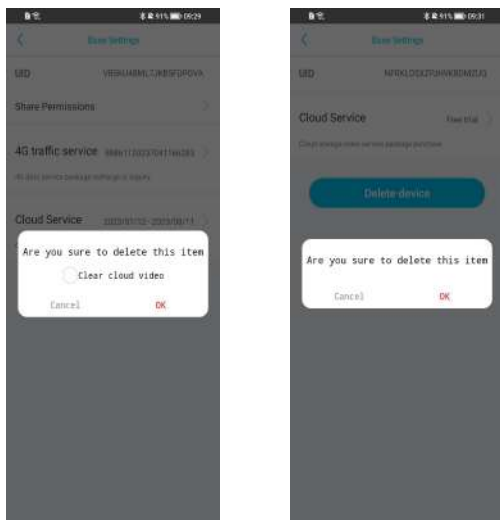
If you have purchased the 30-day service, you can continue to purchase the 30-day cloud service (as below Pic 1) ; you can choose Alipay and WeChat to purchase, and you can check the order in the purchase record after purchase (the cloud service time can be checked in My - Cloud Service - Query)




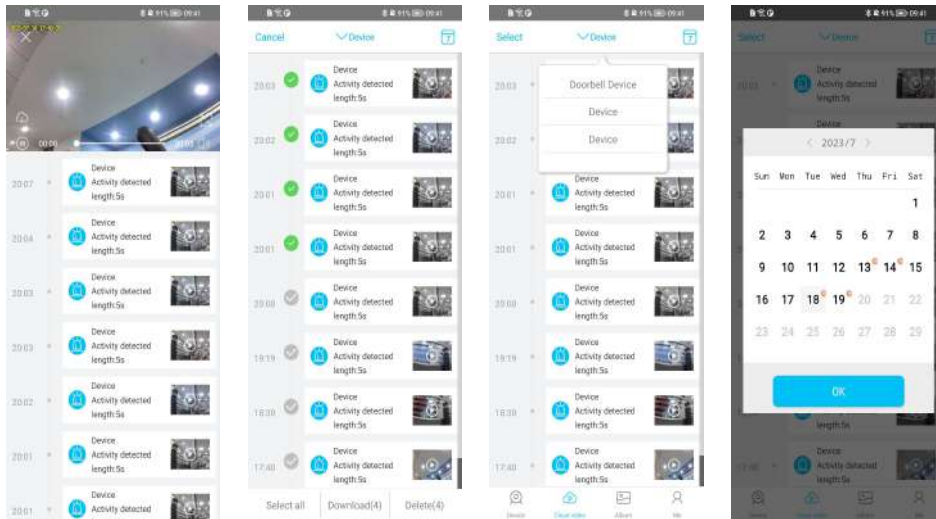
4G traffic service: Click 4G traffic service to check and recharge, select the recharge package, you can pay with Alipay and WeChat, and the QR code of the traffic card can be saved to the mobile phone (both the traffic card number and device UID can be copied and pasted by long pressing to share)



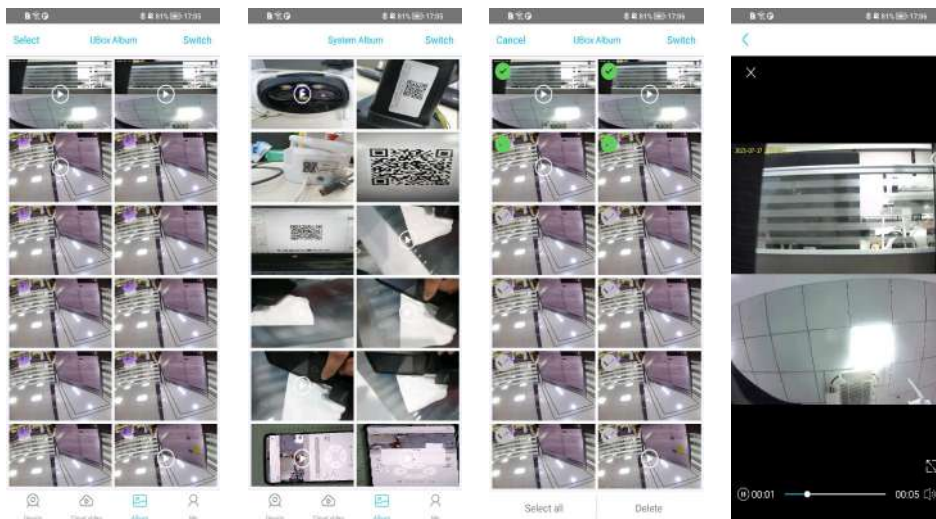
4 Delete the device: basic Settings click to delete the main device, will prompt "empty cloud storage video", select "delete", re-add to the same account, if you choose not to delete the previous cloud video, then re-add to the same account, the previous cloud video can be watched; After the video is deleted and added to another account, the cloud video is automatically cleared. Delete a shared device and confirm the deletion. After the device is deleted, it is no longer displayed in the list.




VIII Cloud video: Play cloud videos on the cloud list page, you can press  on the left corner to download video(as Pic1). You can also download or delete cloud video on the left corner(Shared videos can not be deleted)(as Pic 2). Click drop-down button on the device name to open the image(as Pic 3). You can choose to view the cloud video on the device; click on the calendar in the upper right corner to view the cloud video of the specified date.

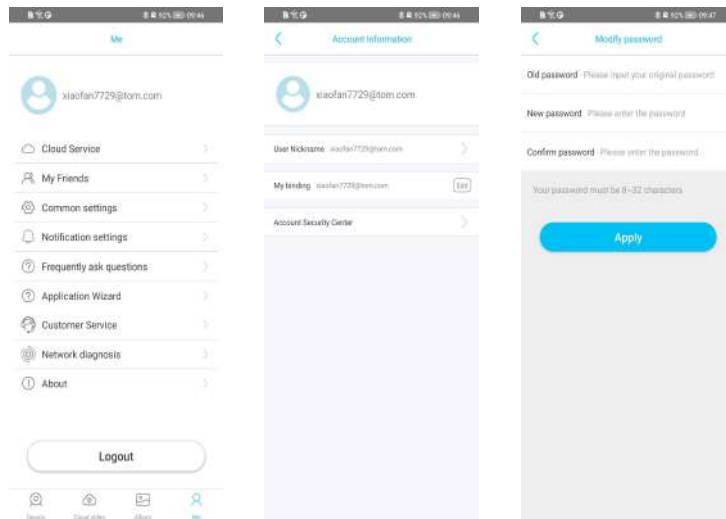


IX Album: On the album page, click Select to select the pictures or videos you want to delete; click Switch in the upper right corner to switch to the system album; click the videos or pictures in the album to view them horizontally and vertically.

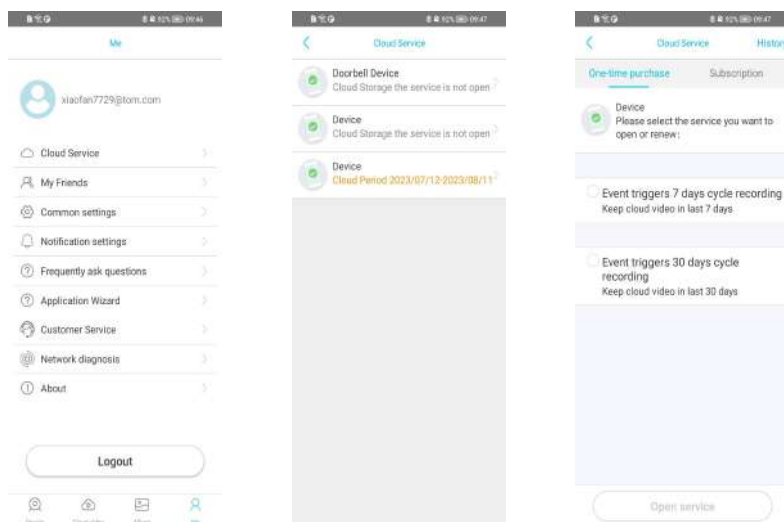


X “Me” Page

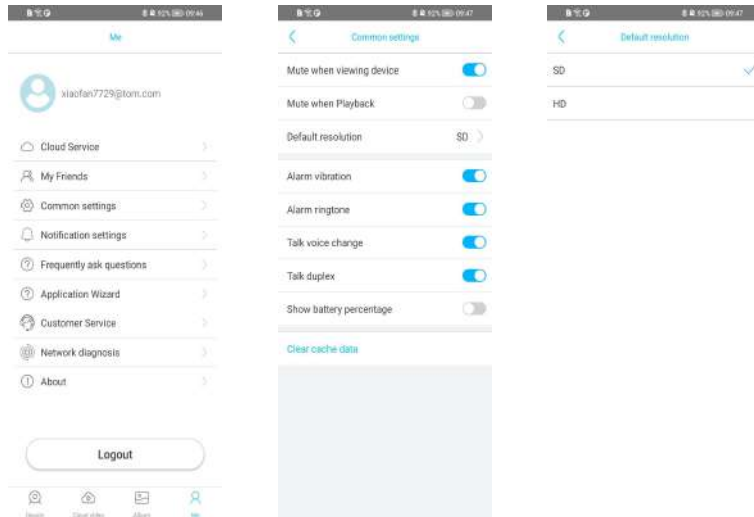
1 Modify the account login password: Click the avatar  15012703952 to enter the account information. Click Edit, and modify the password. If the modification is successful, it will jump to the login page. Login with the original password fails.



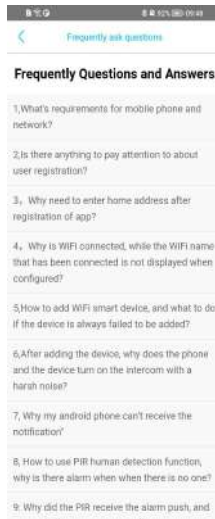
2. Click “Cloud Service” to enter the cloud service list. You can view the service period of all devices. Other purchases are consistent with the basic settings of cloud services.



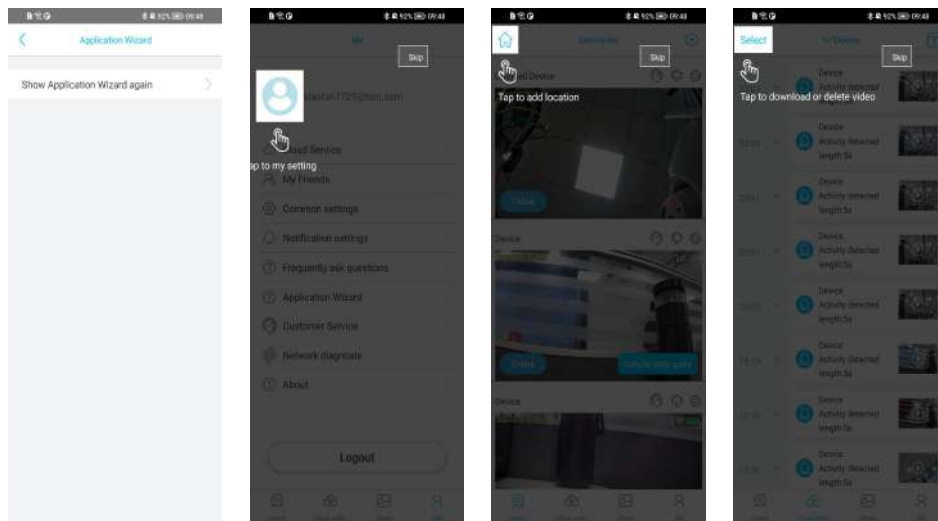
3.General settings: Click the general settings page to set the default sound and playback sound switch for the device when entering the browsing page; Set the alarm and vibration switches, set the default high-definition or standard definition preview for live broadcast; set the voice change and single-duplex intercom settings, and browse the page. Power display percentage switch and clear cache data, clear pictures and videos cached in the phone.



4 Frequently Asked Questions: When you encounter a problem, you can refer to the solutions inside first. Click on the corresponding problem to find the corresponding solution.



5 Me-Application Wizard-Click to display all wizards again, making it easier to use the APP

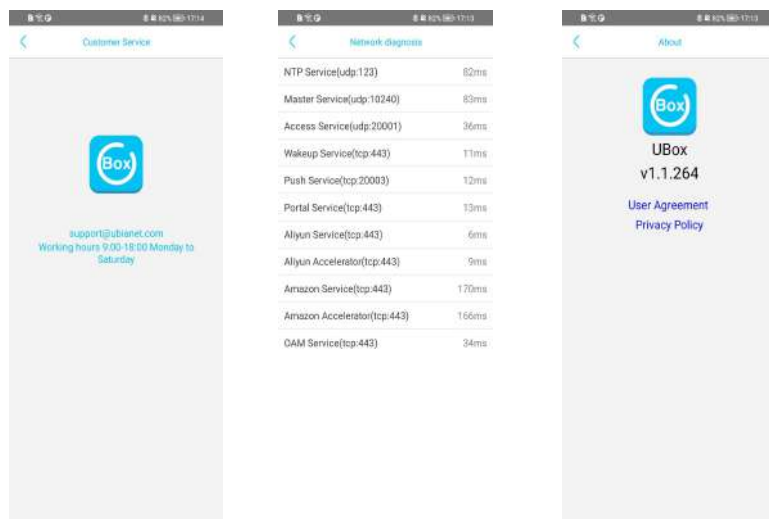


6 Contact customer service: When you encounter problems or need help, you can contact

customer service for consultation.(Pic 1)

7 Network diagnosis: When you encounter problems connecting to the device, use network diagnosis to see if the mobile phone network is normal.

8 About: You can view the APP version, user agreement, and privacy policy.



9 Monitor the live stream page:

9.1 The device list is displayed in recording-normal recording mode, and online is in low-power mode(Pic 1)

9.2 Enter the live broadcast page: turn on the speaker to monitor the sound on the device; you can take photos and videos; turn on the intercom and the APP has a conversation with the device; in the upper left corner of the live broadcast screen, you can switch between HD and SD quality to view the surveillance screen.You can switch to view SD card video and cloud video with the

button 

9.3 The live stream screen has operation buttons for special equipment: Dome device - there is a



corresponding shaking button to adjust the direction and rotation speed of the equipment.(Pic 4)



9.4 Dual light source device: can display white light in the live stream screen or switch to

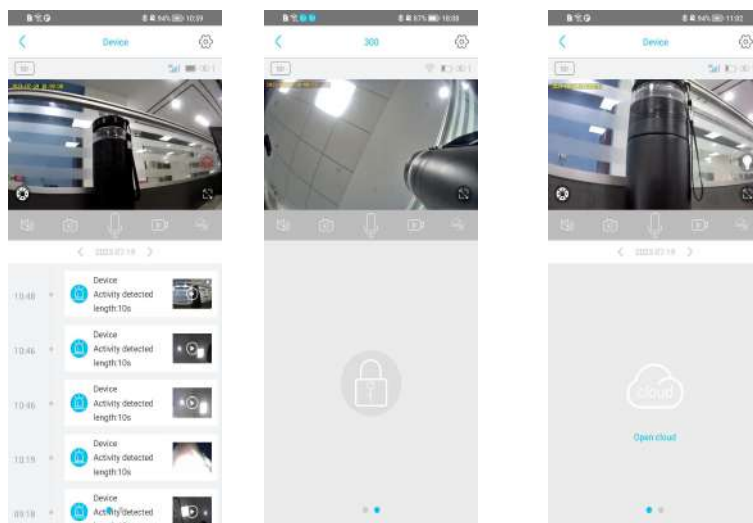
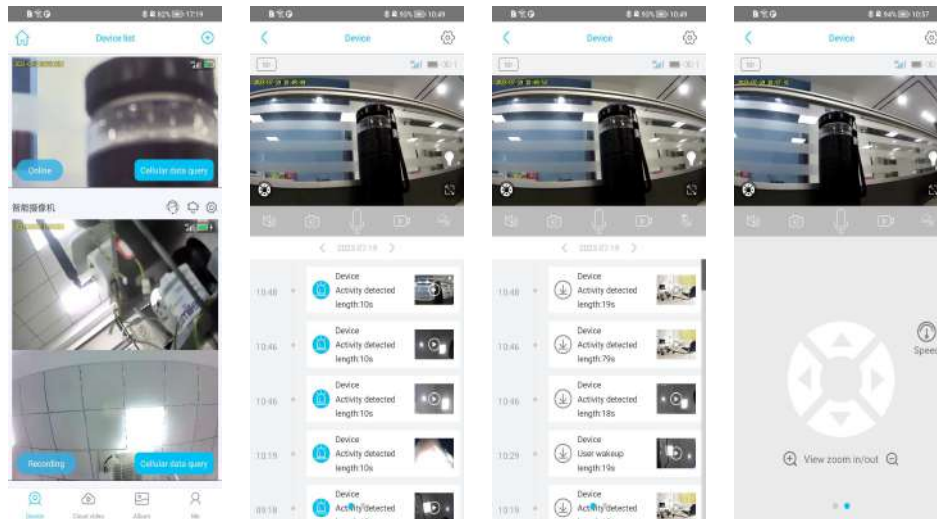


night vision (Pic 2 Pic 5)

9.5 For devices with door locks, you can swipe left on the cloud video to display the second page for unlocking.(Pic 6)

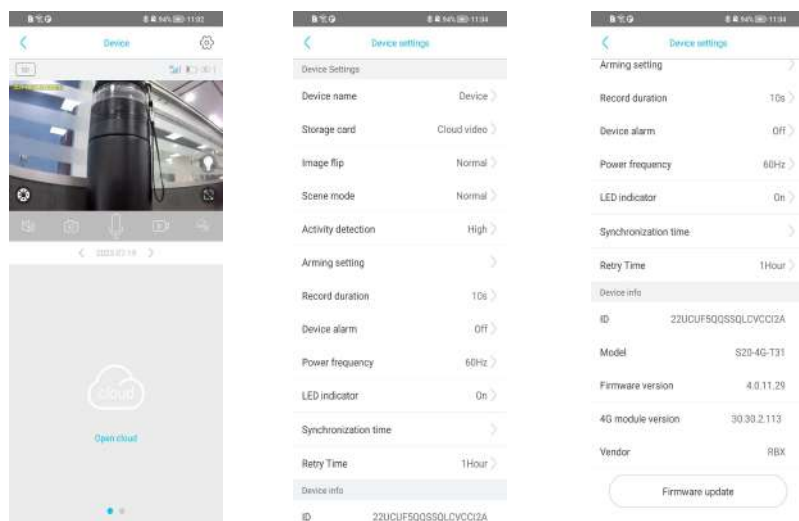
9.6 When the cloud service expires, click Play Cloud Video to prompt for renewal. After renewal, you can view the cloud video.

9.7 If the cloud service has not been activated, a button to enable the cloud service will be displayed under the live stream page. Click to jump to the purchase cloud service page.



9.8 Advanced settings of the live stream page: Open  in the upper right corner of the live

stream screen to enter the advanced settings; you can click Sync Time, and OSD time display is synchronized with the mobile phone; click Firmware Upgrade to upgrade to the new version

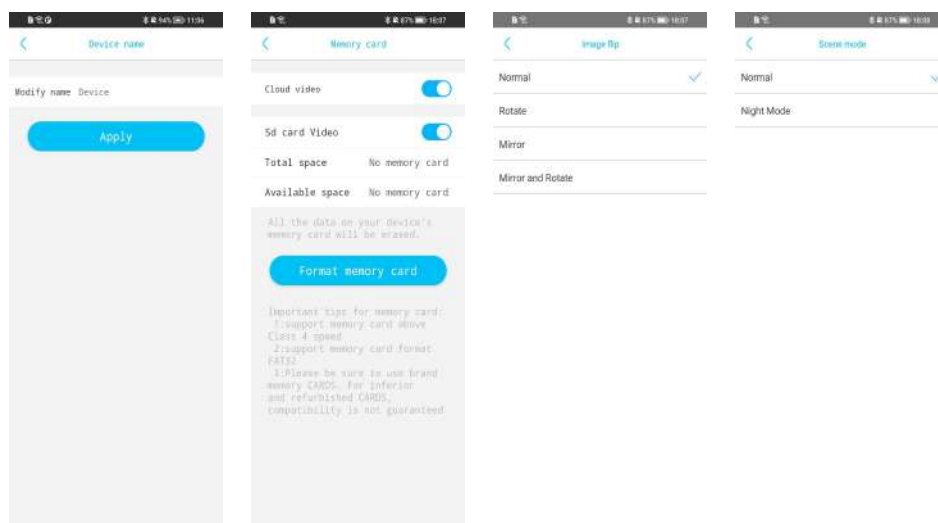


Enter "Device Name" to modify the name map(Pic 1)

Enter "Memory card" to turn on and off cloud video upload, check the SD card capacity and format the SD card(Pic 2)

Enter "Image Flip" to set the image orientation(Pic 3)

Enter "Scene Mode" to set five modes. The default is normal mode. In addition to night vision mode, black devices are automatically detected during the day. In night vision mode, night vision is forced. The picture is black and white. (Pic 4)



Enter "Activity Detection" to set the detection sensitivity to off, High - immediately trigger,

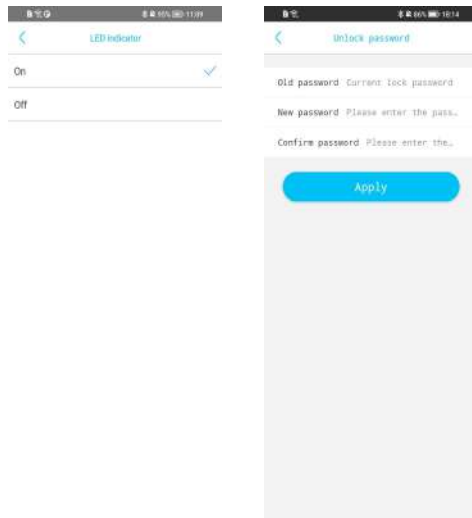
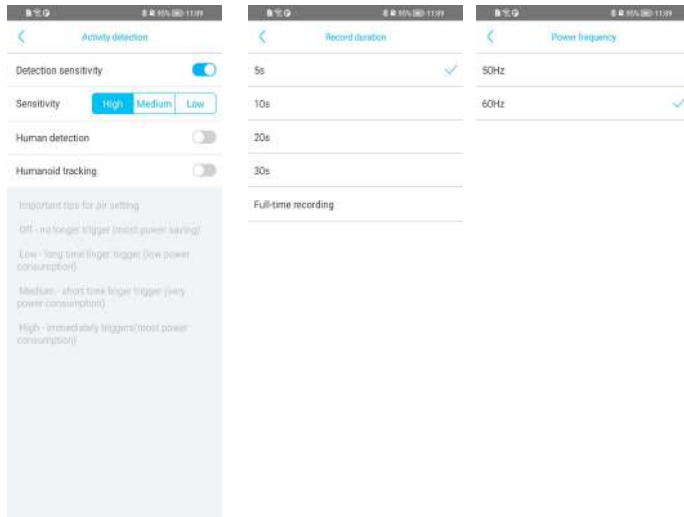
Medium - 5-6 second trigger, Low - 7-8 second trigger(Pic 3)

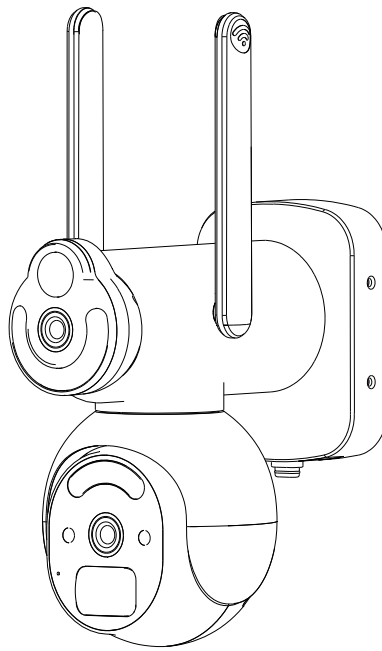
Enter "sleep delay" to set the sleep delay time: 5 seconds, 10 seconds, 20 seconds, 30 seconds, Full-time recording (Pic 4)

Enter "Power Frequency" to set 50HZ and 60HZ

Enter "LED Indicator" to set the switch device working indicator light.(Pic 5)

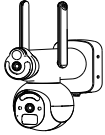
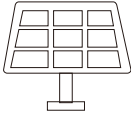
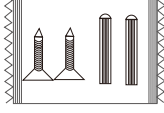
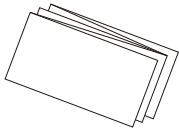
Enter "Unlock Password" to reset the unlock password - this item is only displayed if the door lock device is supported(Pic 6)





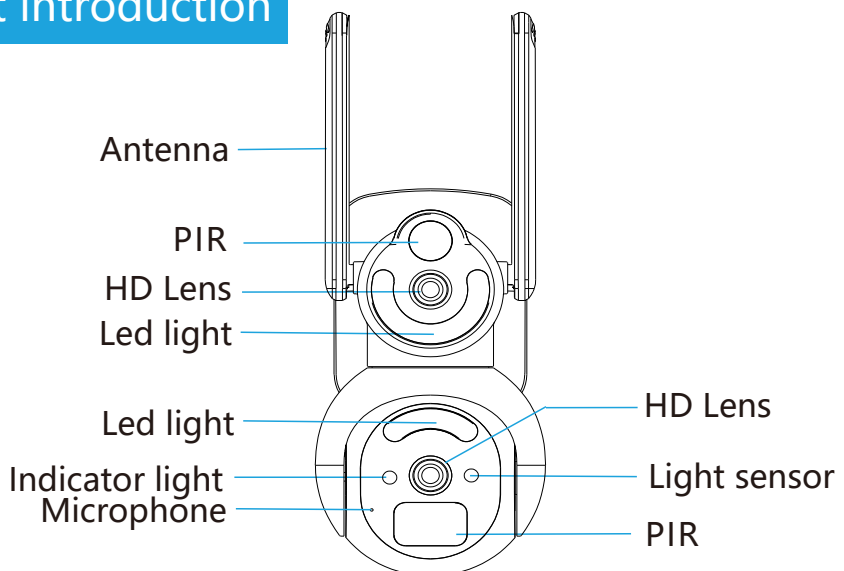
Packing List

Please consult below checklist for all the components

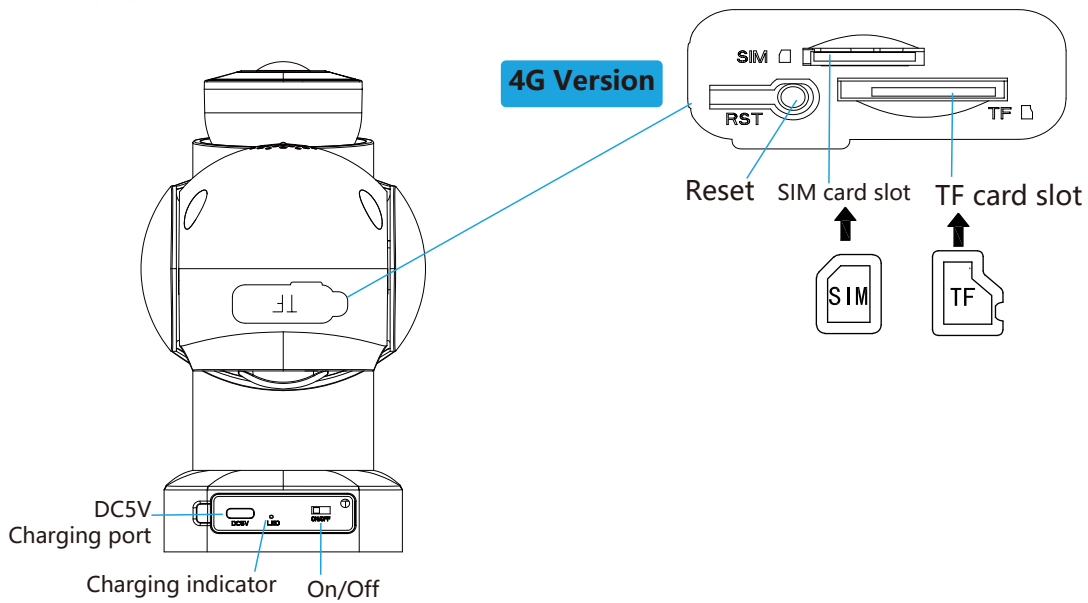
 <p>PTZ Camera</p>	 <p>Solar Panel</p>	 <p>Screw bag</p>	 <p>User manual</p>
---	--	---	--

Product introduction

Front



Back



Charging indicator: The green light is always on during charging, and the green light is off when fully charged.

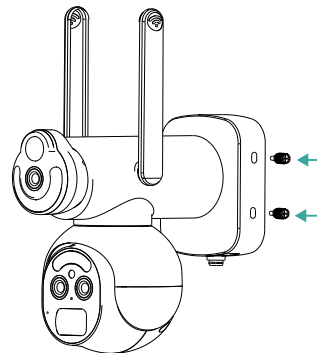
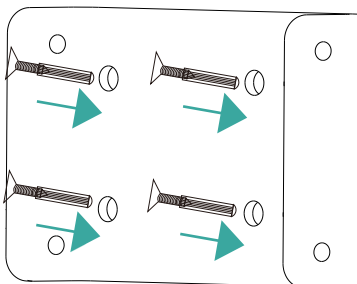
Button instruction

- 4G Version** **Power button:** ON to power on, OFF to power off (the power on indicator will light up)
- Press and hold the reset button for 3s:** device reset (system reset after 1 beep)

Installation method

Make a hole to install

1. After punching holes in the wall, insert the expansion rubber plug, and fix the mounting bracket to the wall with the screws.
2. Fix the camera on the wall with screws.



FCC Statement

This equipment has been tested and found to comply with the limits for a Class B digital device, pursuant to part 15 of the FCC Rules. These limits are designed to provide reasonable protection against harmful interference in a residential installation. This equipment generates, uses and can radiate radio frequency energy and, if not installed and used in accordance with the instructions, may cause harmful interference to radio communications. However, there is no guarantee that interference will not occur in a particular installation. If this equipment does cause harmful interference to radio or television reception, which can be determined by turning the equipment off and on, the user is encouraged to try to correct the interference by one or more of the following measures:

- Reorient or relocate the receiving antenna.
- Increase the separation between the equipment and receiver.
- Connect the equipment into an outlet on a circuit different from that to which the receiver is connected.
- Consult the dealer or an experienced radio/TV technician for help.

Caution: Any changes or modifications to this device not explicitly approved by manufacturer could void your authority to operate this equipment.

This device complies with part 15 of the FCC Rules. Operation is subject to the following two conditions: (1) This device may not cause harmful interference, and (2) this device must accept any interference received, including interference that may cause undesired operation.

RF Exposure Information

This equipment complies with FCC radiation exposure limits set forth for an uncontrolled environment.

This equipment should be installed and operated with minimum distance 20cm between the radiator and your body.

|