

1	
2	
3	

1 100mm

2 70mm



NewPie

NP-S2201 Conference Speakerphone
Instruction Manual

Please carefully read this manual before using the product, and keep it for future reference!
Be advised that the actual product may differ slightly from the instructions.

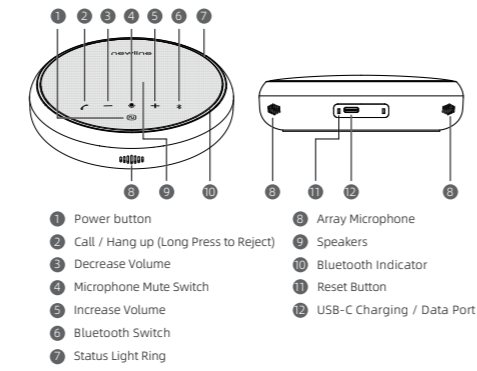
Introduction

Thank you for choosing our omnidirectional conference speakerphone. This is a high-quality speakerphone with professional noise reduction function, 3-microphone array pickup, compatible with multi-media conferencing platforms, suitable for various scenarios such as home, office, team meeting, business, online audio and video conference, etc. It can be used as a Bluetooth speaker. The unique sound cavity design and high-power speaker unit can provide HIFI-level high-quality music experience.

Packing List

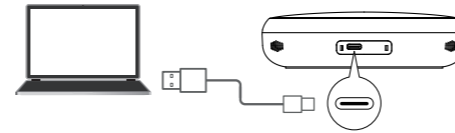
- 1 x NP-S2201 omnidirectional conference speakerphone
- 1 x storage bag
- 1 x instruction manual
- 1 x USB-C cable (1 meter)

Functionality diagram



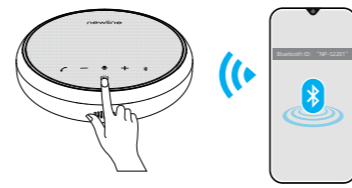
Connecting

1. Connect to your computer via a USB-C cable.



2. Connect to your computer or mobile device via Bluetooth.

- a. Long-press the power button to turn on the speakerphone, after which it will switch to its Bluetooth pairing mode (waiting for a connection). (Note: Bluetooth ID is NewPie)
- b. Turn on the Bluetooth of your mobile phone / computer / tablet / other device, search and find NewPie, and then tap / click to connect.
- c. Every time it is restarted, the speakerphone will automatically reconnect to the most recently connected Bluetooth device.



3. The speakerphone can stay connected via either USB or Bluetooth, but not both at the same time.



For more information, please visit our website.
If you need help, feel free to contact us through our official support channels.

Website: www.newline-work.com
Customer Service: support@newline-work.com
Hotline: (+1) 650 353 7707

正面

On/Off

1. When the speakerphone is connected through a USB data cable to a computer, it will automatically switch to USB connection mode.
2. Upon press-holding the power button for 2 seconds, if the unit is not connected to a computer via USB, the speakerphone will turn on, and can then be connected via Bluetooth.
3. After turning on, if there is no Bluetooth connection within 5 minutes, the speakerphone will automatically turn off.
4. In the Bluetooth connection mode, press-hold the power button for 2 seconds to turn off the speakerphone.

Status Indicators

Status ring light is solid blue	The speakerphone is connected to a computer via USB
Bluetooth light is solid blue	The speakerphone is connected to a computer or mobile device via Bluetooth
Bluetooth light is blinking red and blue	Bluetooth pairing mode
Bluetooth is blinking blue	Ready for Bluetooth connection
Bluetooth light is solid	Bluetooth connected
Status ring light is blinking blue	Incoming call to Bluetooth-connected mobile phone
Status ring light blinks clockwise/counterclockwise	Volume increase or decrease
Status ring light is solid red	Microphone array muted
Status ring light is solid red (According to battery percentage)	Press the power button to check the battery charge level
Status ring light blinking red	Low battery reminder
Status ring light is solid red (According to battery percentage)	Charging

Key Functions

📞	Short press	Answer / Hang up call
	Press-hold for 2 seconds	Reject call
-	Short press	Volume decrease
	Short press	Volume increase
🎤	Short press	Microphone Mute / Unmute
	Short press	Turn Bluetooth on / off
📶	Press-hold for 2 seconds	Activate Bluetooth pairing state
	Short press	Check battery charge level
🔋	Short press	Turn on / off

Specifications

Bluetooth version	V5.1
Bluetooth distance	10 m
Microphone array	3 Units
Microphone sensitivity	-27 dB
Microphone Distortion	<3%
Microphone SNR	70 dB
Microphone pickup distance	5 m radius
Microphone Frequency Response	100 Hz - 7.5 KHz
Bluetooth talk time	up to 12 hours
Bluetooth music playback	up to 10 hours
Battery capacity	2600 mAh
Speaker specifications	4 Ω, 3 W
Product dimensions	Φ130 x 35.5 mm
Product weight	300 g
Charging interface	USB-C
Rated input charge	5 V → 1 A

Troubleshooting

1. If the speakerphone fails to turn on when using it for the first time, please recharge it before attempting once more.
2. If the speakerphone cannot be normally shut down during usage, please short-press the reset button to reset it.

背面

技术要求:

- 1, 280(70x4)x100 mm, 128g铜版纸,双面彩色印刷, 3折页, 红色实线(裁切线)和红色虚线(折叠线)都不印刷
- 2, 重点尺寸为 **1** -; **2**
- 3, 印刷密着性须符合鸿合规范;
- 4, 印刷清晰无飞边,毛刺,扭曲等现象
- 5, 须满足RoHS要求,并按鸿合要求提供相关资料。

第三角法

COMMON TOLERANCE		Unit : mm		
DIM	CLASS	A	B	C
	$L \leq 3$	± 0.05	± 0.1	± 0.2
	$3 < L \leq 6$	± 0.05	± 0.1	± 0.2
	$6 < L \leq 16$	± 0.1	± 0.15	± 0.3
	$16 < L \leq 30$	± 0.1	± 0.2	± 0.5
	$30 < L \leq 120$	± 0.15	± 0.3	± 0.8
	$120 < L \leq 315$	± 0.2	± 0.5	± 1.2
	$315 < L \leq 1000$	± 0.5	± 0.8	± 2.0
	$1000 < L \leq 2000$	± 1.0		± 3.0

新线科技有限公司

材质 MATERIAL		比例 SCALE	1 : 1	单位 UNIT	mm
名称 PART NAME	NewPie NP-S2201_说明书		承认 APPROVED	系统签核	
			教核 CHECK	系统签核	
件号 PART NO.		制图 DRAW	黄佐贤		
备注 NOTE		日期 DATE	2022/11/17		

Federal Communications Commission (FCC) Statement. This device complies with part 15 of the FCC Rules. Operation is subject to the following two conditions:

- (1) This device may not cause harmful interference, and
- (2) this device must accept any interference received,

including interference that may cause undesired operation. Note: This equipment has been tested and found to comply with the limits for a Class B digital device, pursuant to part 15 of the FCC Rules. These limits are designed to provide Reasonable protection against harmful interference in a residential installation. This equipment generates, uses and can radiate radio frequency energy and, if not installed and used in accordance with the instructions, may cause harmful interference to radio communications. However, there is no guarantee that interference will not occur in a particular installation. If this equipment does cause harmful interference to radio or television reception, which can be determined by turning the equipment off and on, the user is encouraged to try to correct the interference by one or more of the following measures:

- Reorient or relocate the receiving antenna.
- Increase the separation between the equipment and receiver.
- Connect the equipment into an outlet on a circuit different from that to which the receiver is connected.
- Consult the dealer or an experienced radio/TV technician for help.

Warning: Changes or modifications made to this device not expressly approved by **Newline Technology Company Ltd.** may void the FCC authorization to operate this device. Note: The manufacturer is not responsible for any radio or TV interference caused by unauthorized modifications to this equipment. Such modifications could void the user's authority to operate the equipment.

RF exposure statement:

This device complies with FCC RF radiation exposure limits set forth for an uncontrolled environment. The device is installed and operated without restriction.