

VOYOR



STRONG WATER JET

Rechargeable Water Flosser

W011

Enjoy A Healthy And Beautiful Life

ENGLISH.....	02
DEUTSCH	08
FRANÇAIS.....	14
ITALIANO	20
ESPAÑOL.....	26



Product operation video



VOYOR Customer service



Follow us to become our VIP



STRONG WATER JET

Rechargeable Water Flosser

W011

Enjoy A Healthy And Beautiful Life
Instruction Manual

Contents

Attention	03
Product description	04
How to use	05
Specification	06
Cleansing and maintenance	07

Attention

01. Please read this instruction manual carefully before use and keep it for future use.
02. Do not use this device for any purpose other than oral cleansing.
03. Do not put the water over 40°C into tank to clean your teeth, to prevent from injury.
04. Do not put mouthwash liquid in water tank because it may cause corrosion.
05. Do not press the nozzle too hard against your teeth or gums to avoid injury.
06. Do not place or store the product where it can fall or be pulled into a sink, water or other liquid while plugged in.
07. Make sure your power adaptor is in good condition. Do not use damaged cord or plug to charge the device.
08. Keep the product, cord and charging plug and any attachments away from heated surfaces.
09. Do not charge the device when the temperature is lower than 0°C or higher than 40°C (For example: under the sunlight).
10. In case of abnormal conditions (such as abnormal smell, temperature and sound) during charging or use, the power supply should be cut off immediately.
11. People who are experiencing tooth or gum pain should consult with your dentist before using this device.
12. Toddlers, infants, people who are unable to operate it should not be allowed to use this device. Please keep it out of the reach of children. Keep the nozzle away from little kids to prevent them swallowing it by accident.
13. When the product is broken and cannot work normally, please do not disassemble or repair it yourself, please contact VOYOR Customer Service for assistance.

Product description

- 01.Nozzle
- 02.Nozzle release button
- 03.On/off button
- 04.Working mode selection button
- 05.Working mode indicator light
- 06.Charging indicator light
- 07.Charging base
- 08.Water tank



THREE WORKING MODES

Normal mode

It is a common mode. It is suitable for deep cleaning.

Soft mode

It is a mild mode. It is suitable for people who first time use or those with sensitive teeth who are prone to bleeding.

Pulse mode

It is an intermittent massage mode. It helps massage and stimulate your gums.

4 EXCHANGEABLE TIPS

Ordinary high-pressure tip

Suitable for a 360-degree cleaning and deep cleaning of teeth.

Periodontal tip

Rinse and massage gums, relieve periodontitis, gingivitis, teeth shrinking, reduce the thickness of periodontal pockets.

Tongue cleaner tip

Clean coating and bacterias to effectively keep oral fresh.

Dental plaque tip

An appropriate tip with ultra-fine nozzle design for implants, dental bridge, false tooth crowns.

How to use

01.Charging

- 1).It takes about 20 hours to be fully charged. When the device runs out of power and needs to be charged, the charging indicator light will start to flash.
- 2).Plug the charging plug into your home socket. Make sure there is no any water inside the charging socket before charging.
- 3).Then put the device onto the charging base (Picture 1). The charging indicator light will show up to indicate that the appliance is charging.
- 4).When the charging indicator lights all stay on, it means the device is fully charged.

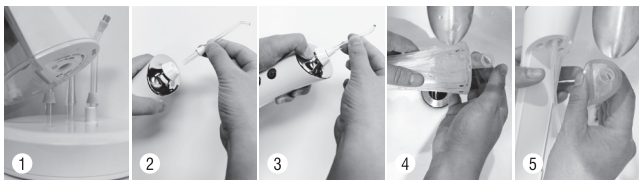
02.Install & Replace nozzles

- 1).Insert it directly into the device body until you hear a click sound, which indicates that the replacement head is successfully connected with the device (Picture 2).
- 2).Press on the nozzle release button and pull it out directly and gently and replace another tip according to your needs. (Picture 3)

03.Fill the water tank.

There are two ways to fill the water tank:

- 1).Open the cap on the bottom of tank and fill the water in it. (Picture4)
 - 2).Take off the tank from device body and fill the water in it. (Picture 5) Then install water tank back.
- 04.Put the nozzle inside your mouth first, and then click the on/off button to start the device, click “mode” button to choose the appropriate working mode according to your needs.
- 05.Direct the water jet flow at a 90-degree angle against your teeth and gums and move it slowly for effective oral cleansing. Keep your mouth open a little bit so the water can flow out of your mouth.
- 06.It has a built-in timer and will automatically turn off after 2 minutes. Just restart it to use it.
- 07.Click on/off button again to turn off the device.
- 08.Open the water tank cap and drain off the water inside the water tank.
- 09.Wipe the device with a clean and dry cloth.



Specification

Product name	Rechargeable Water Flosser
Model	W011
Material	ABS
Working voltage	3.7 V
Working power	5 W
Battery capacity	1500 mAh
Product size	8.4*7.2*21.5 cm

Product weight	322 g
Charging time	20 h
Box contents	1 x VOYOR rechargeable water flosser 1 x Ordinary high-pressure tip 1 x Periodontal tip 1 x Dental plaque tip 1 x Tongue cleaner tip 1 x Charging base 1 x User manual

Cleansing and maintenance

- 01.Ensure that there is no residual water inside the unit to prevent bacteria propagating. If you do not use the product for a long time, please clean and dry it for storage.
- 02.Wash the device with water or neutral detergent. Never use a caustic solution because they may cause damage to product.
- 03.Do not wash with water over 50°C .
- 04.Please clean the device body with a dry or wet cloth. Please do not submerge it into water.
- 05.You can clean the nozzles with a dry or wet cloth, or rinse it under tap water.
- 06.Keep this product out of the reach of children.
- 07.Replace the nozzles every 6 months for your health. (New replacement nozzles are available from VOYOR Amazon store.)

IMPORTANT: If you do not use the product for a long time, please remember to fully charge it at least once per year.

CONTACT: If you have any questions or problems when using the product, please feel free to contact us at any time via the following email, thank you.

USA: support.us@voyor.com | **EU:** support.eu@voyor.com

FaceBook:www.facebook.com/voyorbeauty

- Thank you again for choosing VOYOR products!

IPX7  CE RoHS FC  
Made in China 

FCC ID: 2A9VL-W011

Model: W011

This device complies with part 15 of the FCC Rules. Operation is subject to the following two conditions: (1) This device may not cause harmful interference, and (2) this device must accept any interference received, including interference that may cause undesired operation.

Changes or modifications to this equipment may cause harmful interference unless the modifications are expressly approved in the instruction manual. The user could lose the authority to operate this equipment if an unauthorized change or modification is made.

NOTE: This equipment has been tested and found to comply with the limits for a Class B digital device, pursuant to part 15 of the FCC Rules. These limits are designed to provide reasonable protection against harmful interference in a residential installation. This equipment generates, uses and can radiate radio frequency energy and, if not installed and used in accordance with the instructions, may cause harmful interference to radio communications. However, there is no guarantee that interference will not occur in a particular installation. If this equipment does cause harmful interference to radio or television reception, which can be determined by turning the equipment off and on, the user is encouraged to try to correct the interference by one or more of the following measures:

- Reorient or relocate the receiving antenna.
- Increase the separation between the equipment and receiver.
- Connect the equipment into an outlet on a circuit different from that to which the receiver is connected.
- Consult the dealer or an experienced radio/TV technician for help.
- The rating information is located at the bottom of the unit.

Xiamen JIEBOYA Technology Co.,Ltd



ENJOY A HEALTHY AND
BEAUTIFUL LIFE

VOYOR ELECTRONIC CO.,LTD

VOYOR ELECTRONIC CO.,LTD

Room 801, Building 75, Taoyuan Village,
33 Longzhu Avenue, Taoyuan Community,
Taoyuan Street, Nanshan District,
Shenzhen, Guangdong
China
518000

Contact Email:

US:support.us@vovor.com | EU:support.eu@vovor.com
www.vovor.com



Xiamen JIEBOYA Technology Co.,Ltd

Add: No.9 Fengshan North 5th Road,
Haicang District,
Xiamen, Fujian,
China,
361000
Email: vovor.feedback.us@hotmail.com



Authorized European Representative:

Company Name: Prolinx GmbH
Contact person: Mr. Nianzhuang Liu
Add: Brehmstr. 56, 40239 Duesseldorf Germany
E-mail: eu@eulinx.eu

Company Name: Prolinx Global LTD
Contact person: Mr. Nianzhuang Liu
Add: 27 Old Gloucester Street, London,
WC1N 3AX, UK
E-mail: eu@eulinx.eu