

Size: 432*92mm 材质: 120g哑粉纸



User Manual

We are appreciated for purchasing our wireless headset. This guide contains instructions for setting up and using your headset easily.

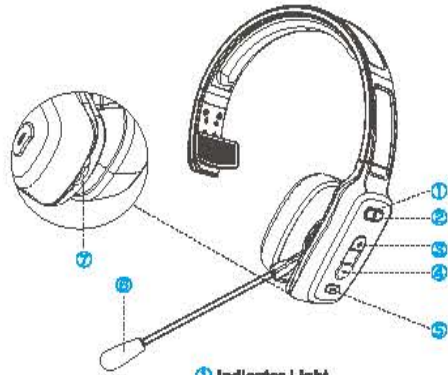
Package List



A. Wireless Headset
B. Type-C USB Cable
C. User Manual

If any questions are not answered in the manual, please check the product description on Amazon (FAQ at the product listing bottom), or contact our store customer service team through the Amazon platform, we will reply within 24 hours

Headset Overview



- 1 Indicator Light
- 2 MFB Button
- 3 Volume Up/ Next Music
- 4 Volume Down/Previous Music
- 5 Mute Button
- 6 Microphone
- 7 USB C Charging Port

Wearing and Adjusting

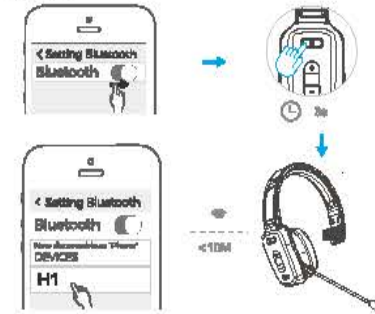


- Place the headset on your head.
- Position the speaker directly on your ear. You can slide the headband to find the best fit for stability and comfort.
- You can bend the microphone boom to position the microphone about one finger's width away from your face at the corner of your mouth.
- The microphone boom supports 270 degrees of rotation so that you can position the headset on either ear.

Pairing

How to pairing

- Press and hold on the "MFB" button to power on, a voice prompt "Power on, Pairing" with the indicator light flashes blue-red alternately.
- Turn on the Bluetooth on your phone, search and click the "H1", a voice prompt "Your Headset is connected" with the indicator light off.

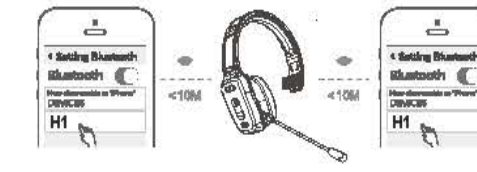


NOTE

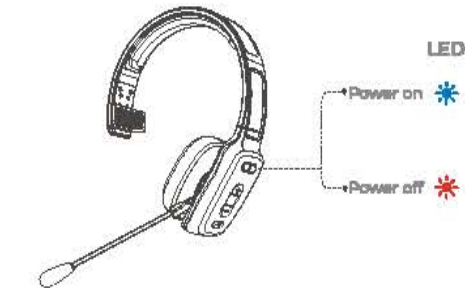
- After the headset is disconnected from the phone, it will automatically enter the pairing state and shut down after 5 minutes.
- When there is a pairing record, just power on, and the headset will automatically connect to the phone.

How to pairing two device at the same time

- After the first device is successfully connected, turn off the Bluetooth of the first device and the headset will re-enter the pairing state with the indicator light flashing blue-red alternately.
- Turn on the Bluetooth of the second device, search and click "H1", the pairing is successful with the indicator light off.
- Turn on the Bluetooth of the first device, search and click "H1", so that successfully connect two devices at the same time.



Power On/Off

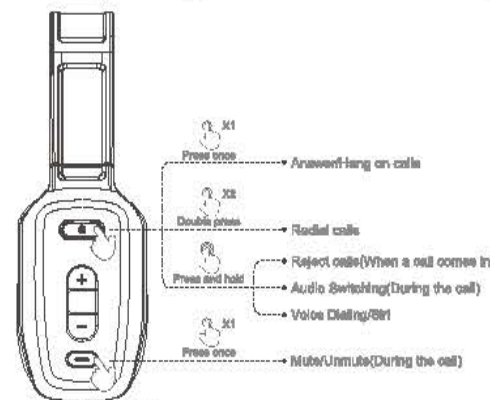


Power on: Press MFB button for 3s, the Indicator light flashes blue 3 times with a voice prompt "Power On".

Power off: Press MFB button for 5s, the Indicator light flashes red 1s with a voice prompt "Power Off".

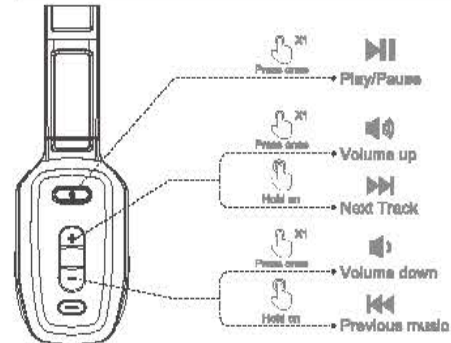
THANK YOU

Making/Taking Calls



- Answer/End Calls:** Press once the "MFB" button.
- Reject Calls:** Press and hold the "MFB" button for 2s.
- Audio Switching:** Press and hold the "MFB" button for 1s to switch the audio between the phone and the headset.
- Mute/Unmute:** Press once the "Mute" button.
- Redial Calls:** Double press the "MFB" button.
- Voice Dialing/Siri:** Press and hold the "MFB" button for 1s.

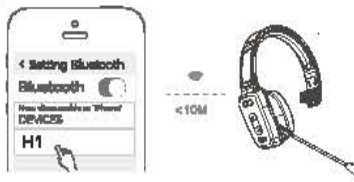
Music



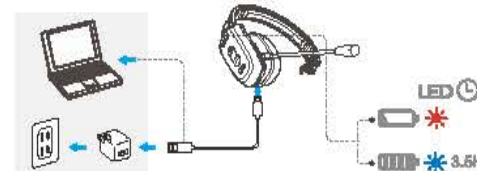
- Play/Pause:** Press once the "MFB" button.
- Next Track:** Press and hold the "+" button.
- Previous Track:** Press and hold the "-" button.
- Volume Up:** Press once the "V+" button.
- Volume Down:** Press once the "V-" button.

Resetting

- In the state of power on, press and hold both the MFB button and "+" button for 5s, the reset is successful with the indicator light flashing blue-red and waiting for pairing.
- Delete the Bluetooth pairing record "H1" of the headphone on the original phone and then turn off the Bluetooth.
- After 10 seconds, Turn on the phone's bluetooth to search "H1" and pair.



Charging The Headset



Use the Type-C charging cable(provided) to connect your computer(with power on) or an adapter(not provided) to the headset. The indicator will stay red when charging and stay blue after fully charging.

NOTE:

- The power level down to 3.2V starts to alarm, there will be a voice prompt " Battery is Low Please Charge" every 3 min with the indicator flash red.
- The headset shut down when the power level down to 3.1V.

Specification

Model: H1
Version: V6.2
Transmission Distance: 33 feet/10 meters (open space)
Supporting Protocols: HSP HFP A2DP AVRCP
CODEC : SBC,AAC
Battery Capacity: 400mAh
Talk Time: About 25 Hours
Using Time: About 80 Hours
Charging Time: About 2 Hours
Item Size: About 192.90*157.08*54.05mm
Item Weight: About 141g

Safety

IMPORTANT SAFETY NOTE: Prolonged exposure to high volume levels can damage your hearing. To avoid injury, set the volume to the lowest comfortable level. If you experience ringing in your ears, or voice sound muffled, stop using the headset. Avoid turning up the volume to block noisy surroundings. It's possible for your ears to adapt to the volume that is too high, and this could result in permanent hearing damage without any noticeable discomfort.

- Check with local and state laws regarding cell phone/headset usage while operating a motor vehicle.
- Do not immerse any part of this product in water.
- Plastic bags and small parts may cause choking if ingested. Keep them away from small children and pets.
- Avoid temperatures exceeding 60°C (140°F) (it will cause equipment failure).

Q&A

- Q: How to reconnect and what to do if reconnection fails?**
A: When H1 is successfully connected to your phone for the first time, it will automatically search and reconnect the paired device after power on. If it fails, please re-pair and connect. H1 can reconnect within 10 minutes, if more than 10 minutes will be turned off.
- Q: How can I delete the paired record?**
A: Press and hold the MFB and Volume - buttons for 5 seconds to clear the pairing record. After deletion, H1 will not connect the device automatically.
- Q: What is the password for pairing?**
A: Some connected devices need password for pairing, please try 0000 or 8888 or 1111 or 1234.
- Q: What devices can charge the headset?**
A: Any car charger, portable charger, computer, etc. that needs DC 5V and has a charging current greater than 500mA can charge the H1.
- Q: If there is a connection problem or dead, what should I do?**
A: Please try charging reset, the operation method: plug in the charging cable charging, the headset reset to the off state, the power on can be used normally, if still can not be used normally, you can seek technical support from us at Amazon.
- Q: My headset automatically shut down?**
A: If more than 10 minutes without connecting any device, or the battery voltage is lower than 3.1V, H1 will automatically shut down.

This device complies with part 15 of the FCC Rules. Operation is subject to the following two conditions: (1) This device may not cause harmful interference, and (2) this device must accept any interference received, including interference that may cause undesired operation.

Any Changes or modifications not expressly approved by the party responsible for compliance could void the user's authority to operate the equipment.

Note: This equipment has been tested and found to comply with the limits for a Class B digital device, pursuant to part 15 of the FCC Rules. These limits are designed to provide reasonable protection against harmful interference in a residential installation. This equipment generates uses and can radiate radio frequency energy and, if not installed and used in accordance with the instructions, may cause harmful interference to radio communications. However, there is no guarantee that interference will not occur in a particular installation. If this equipment does cause harmful interference to radio or television reception, which can be determined by turning the equipment off and on, the user is encouraged to try to correct the interference by one or more of the following measures:

- Reorient or relocate the receiving antenna.
- Increase the separation between the equipment and receiver.
- Connect the equipment into an outlet on a circuit different from that to which the receiver is connected.
- Consult the dealer or an experienced radio/TV technician for help.