

USER GUIDE

Label Printer



Driver Installation compatible with



Windows



macOS

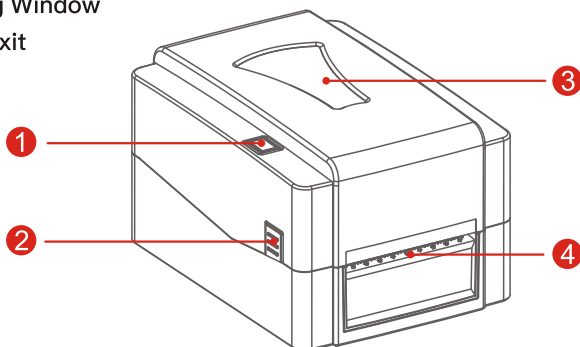
Please read the guide before use !

Contents

Appearance Components	1
Internal Components	1
Default Accessories List	2
Loading the Label	2
Loading the Ribbon	4
Connecting the Printer	7
LED Indicator Light & Buzzer	8
Function Button Operation	8
Switch Sensor Modes and Factory Default	9
Driver for Windows -1 (Quick Installtion)	10
Driver for Windows -2 (Custom Installation)	14
Driver for macOS	20

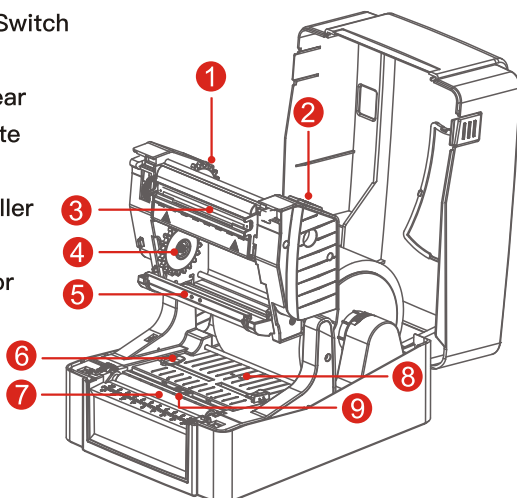
Appearance Components

- ① LED Indicator Light + FEED Button
- ② Cover Open Switch
- ③ Viewing Window
- ④ Label Exit

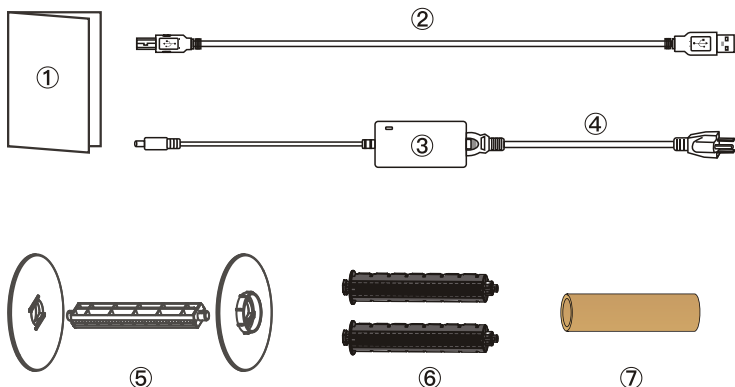


Internal Components

- ① Ribbon Rewind Gear
- ② Print Head Open Switch
- ③ Print Head
- ④ Ribbon Supply Gear
- ⑤ Ribbon Baffle Plate
- ⑥ Media Guide
- ⑦ Rubber Platen Roller
- ⑧ Gap Sensor
- ⑨ Black Mark Sensor



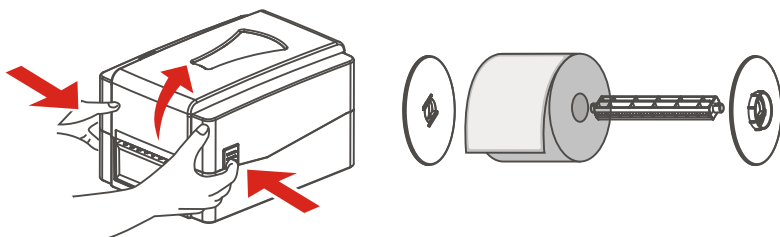
Default Accessories List



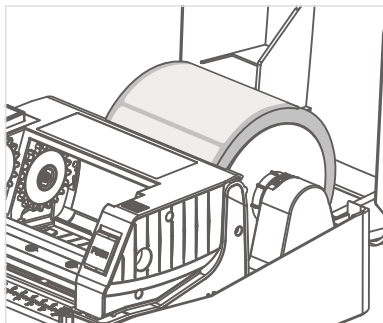
- ① User Guide ② USB Cable ③ Power Adapter ④ Power Cord
⑤ Media Shaft & Baffle Plate x 2 ⑥ Ribbon Shaft x 2
⑦ Ribbon Rewind Paper Core

Loading the Label

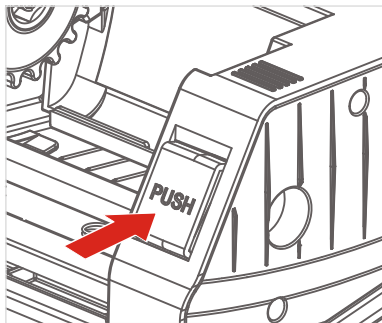
- ① Open the printer top cover by holding and pushing upward the open switch buttons on both sides.
② Insert the media shaft into the label roll and fix the label roll right in the middle with the two baffle plates.



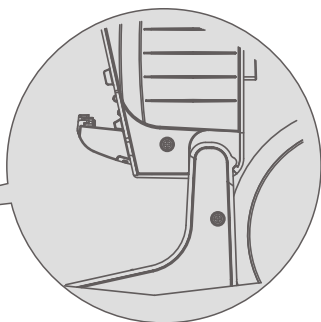
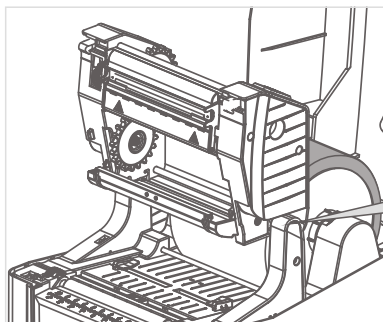
- 3** Load the ready fixed label roll in the printer.



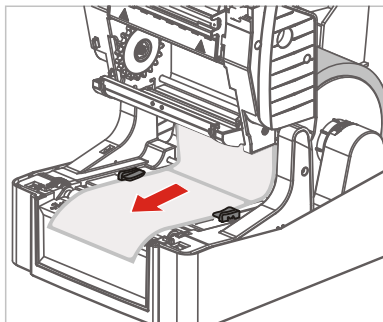
- 4** Open the print head by pressing the PUSH button.



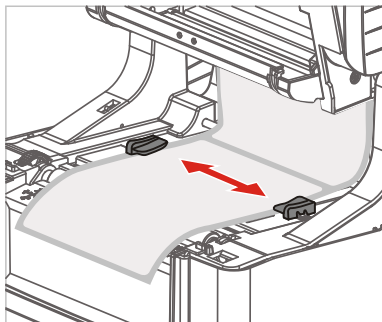
- 5** Lift the print head to the maximum angle and fix it well.



- 6** Pull out the label paper towards the printer exit.

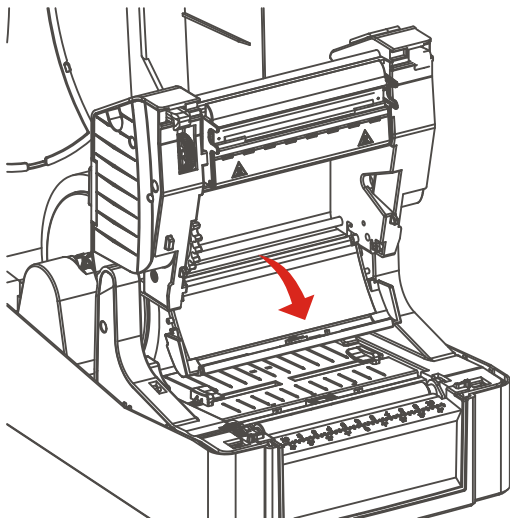


- 7** Adjust the label paper well by moving the media guide.

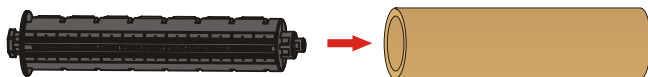


Loading the Ribbon

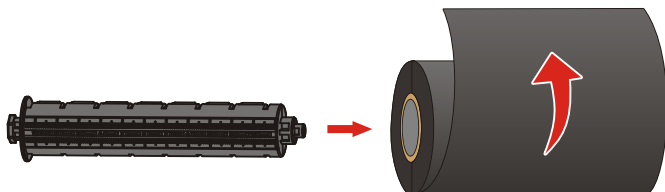
- 1 Lower the ribbon baffle plate and put it down to the maximum angle.



- 2** Insert one ribbon shaft into the empty rewind paper core

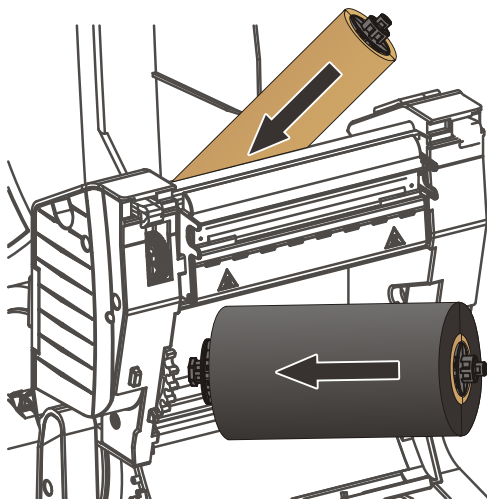


- 3** Insert the other ribbon shaft into the ribbon roll and fix the ribbon in the middle.



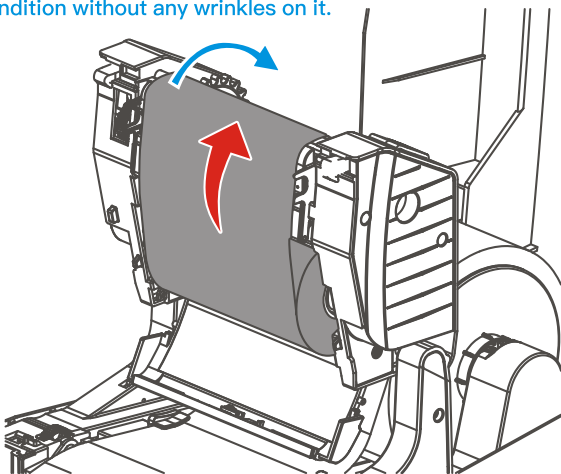
Ink side winding direction as per above image

- 4** Insert the left side marked as “L” first , then the right side marked as “R” to the ribbon rewind or supply gears.



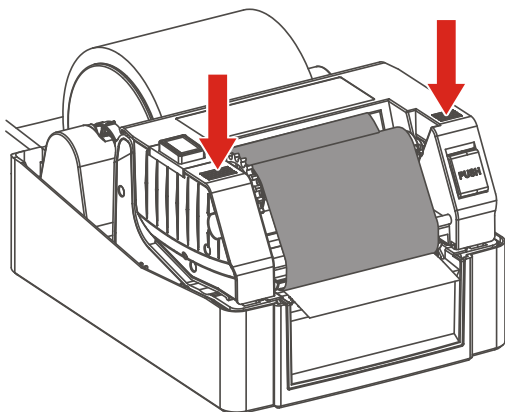
- 5** Pull out the ribbon leader tape and paste it perfectly onto the rewind paper core.

Wheel the rewind ribbon gear until the black ribbon area can cover the print head. Fix and adjust the ribbon to a perfect condition without any wrinkles on it.



- 6** Close the print head perfectly by press hard both ends (the area pointed by the red arrows)

Make sure the print head is completely closed for an ideal printing experience.



Connecting the Printer

1. Connect USB Cable

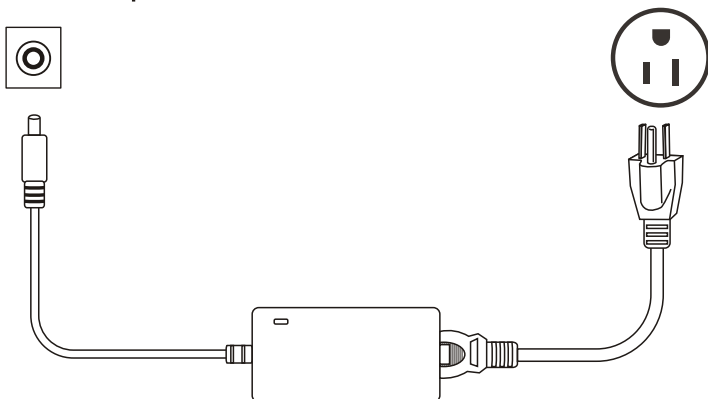


① Plug USB cable into the printer

② Plug USB cable into the computer

* Please connect the USB port on the backside of the case if you are using desktop computer.

2. Connect the power cord



① Plug power cord into the printer

② Plug power cord into the socket

LED Indicator Light & Buzzer

LED light color	Printer Status
Solid blue	Power on and standby, ready for print
Blinking blue	Paused
Solid red	Print head uplift
Blinking red	Paper end
Blinking purple	Print head overheated
Solid purple	On printing
Blinking red and blue (one after the other)	Ribbon end
Blinking red and purple (one after the other)	Paper jam

Buzzer	Explanations
Two beeps	power on and standby, ready for print
One beep	Indicator light turns solid red or blinking red

Function Button Operation

Pause and Resume the Printing Job

Press the FEED button once during the print, the printer will pause job with the indicator light blinking blue; press it one more time, the printer will resume the job.

Feed Paper

The printer gets standby (solid blue). Press the FEED button once quickly, one label feeds out only and it stops at the start end of the next label.

Print Configuration Page

The printer gets standby(solid blue).Press the FEED button twice quickly to print the configuration page.

Paper Calibration

The printer gets standby(solid blue).Press and hold the FEED button for 3 seconds to initiate the automatic paper calibration.

Switch Sensor Modes and Factory Default

Gap Sensor Mode (Default)

Suitable for gap labels

1. Turn off the printer
2. Press and hold the FEED button while turn on the printer at the same time.
3. Release the FEED button when indicator light blinks purple, and the gap sensor starts detecting the paper,
4. Followed by the light turning solid blue and the printer getting standby.
5. Select the gap mode in driver setting.

Black Mark Sensor Mode

Suitable for black mark labels and punched labels

(Note: If the label punched hole is not in the middle, the black mark sensor must be adjusted to align with the punch hole position)

1. Turn off the printer
2. Press and hold the FEED button while turn on the printer at the same time.
3. Release the FEED button when indicator light blinks blue, then the black mark sensor starts detecting the paper
4. Followed by the light turning solid blue and the printer getting stand by.
5. Select the black mark mode in driver setting.

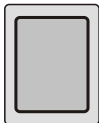
Continuous Mode

Suitable for continuous paper roll

Select the continuous mode directly in the driver setting.

Factory default

1. Turn off the printer
2. Press and hold the FEED button while turn on the printer at the same time.
3. Release the FEED button when indicator light blinks red.
4. Printer resets and turns it on by itself.



← FEED button is at the left side of the printer cover



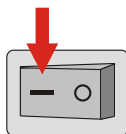
Driver for Windows

Driver for Windows –1 (Quick Installtion)

Driver for Windows –2 (Custom Installation)

Read below carefully before installing the driver

- 1.The printer is connected to the computer with USB cable properly.
- 2.The power cable is properly plugged and the printer switch button is ON.

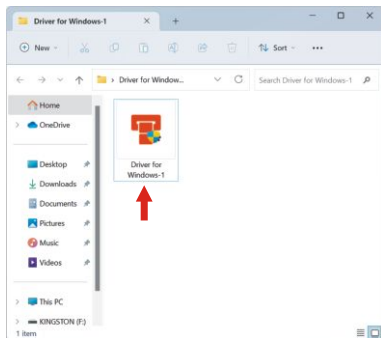


Driver for Windows -1 (Quick Installtion)

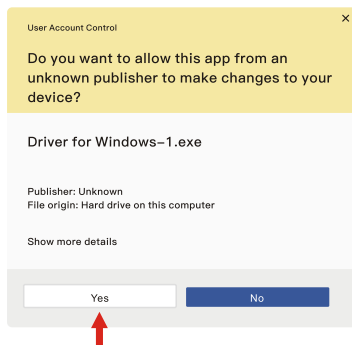


Note: Close the security software before installation

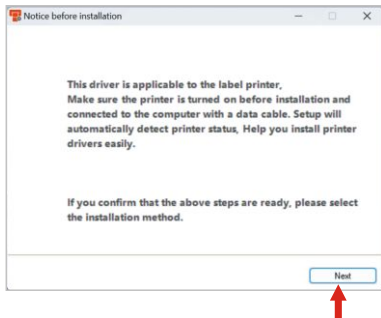
1. Double click on Driver



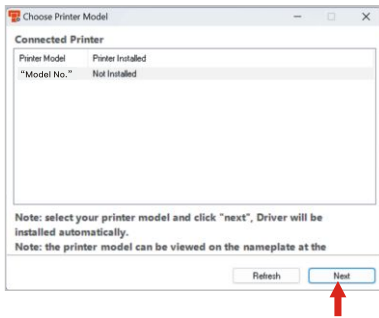
2. Click on “Yes”



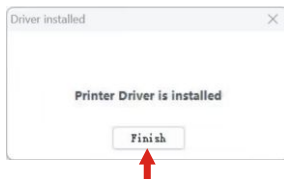
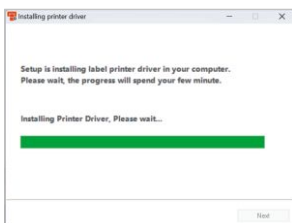
3. Click on “Next”



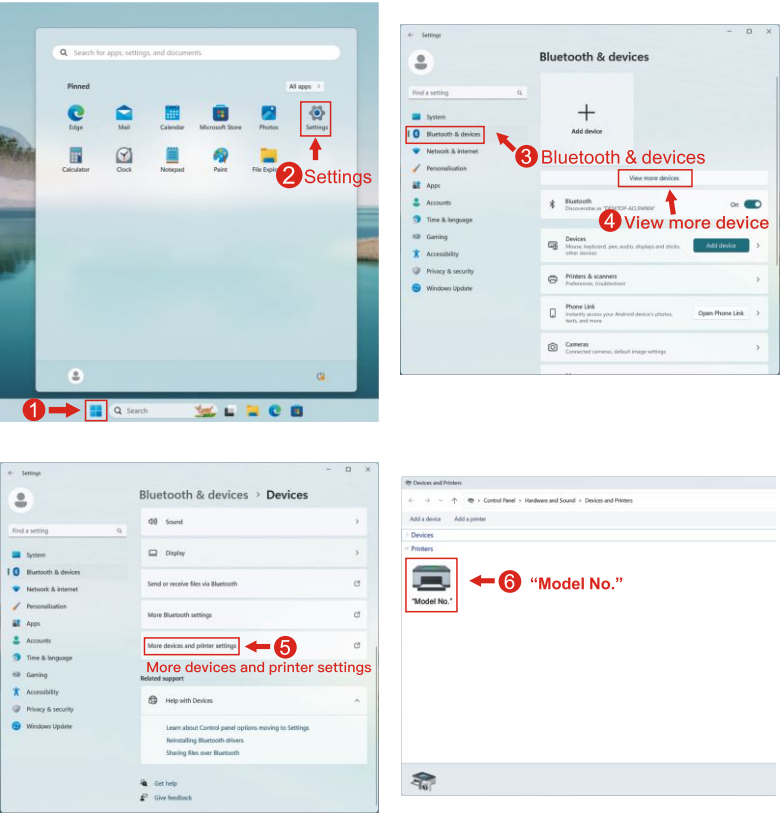
4. Click on “Next”



5. Click on “Finish”



6. Steps for how to find the installed printer in Windows 11 PC.



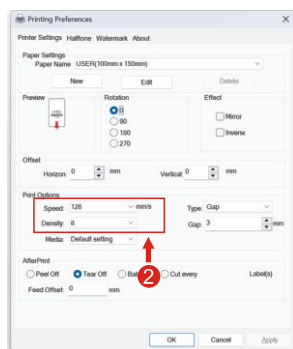
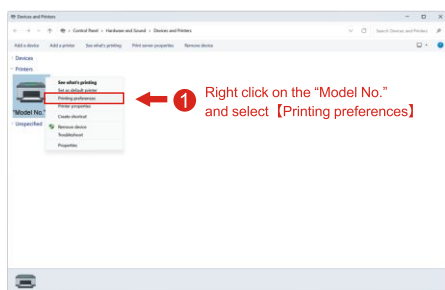
Important tips :

When [Driver for Windows-1] does not work, you can go for the solution of [Driver for Windows-2].

Printer Setting

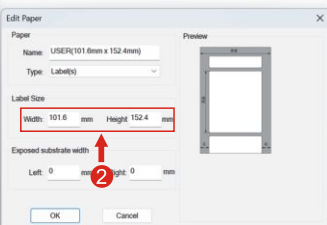
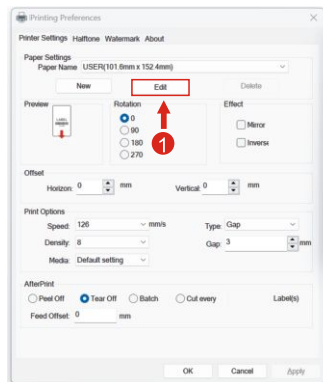
How to make the print sharper and darker?

1. By default, your printer is set to print at its fastest. Slowing this speed will result in a higher resolution.
2. Increasing the number for your density / darkness will result in a darker print. Setting the density too high will result in unwanted dark lines and/or label getting too hot and sticking mid-way to the printer head. Decreasing this number results in a lighter print.
3. Besides, to clean the print head and rubber platen roller softly with industrial alcohol-sprayed wet cloth also helps to improve the print quality.
4. If the print head is broken or the rubber platen roller worn-out, the print quality also looks not good. In this case, you are suggested to replace the print head or rubber roller.



How to set the paper?

You can choose a default size from the list or edit a custom size.

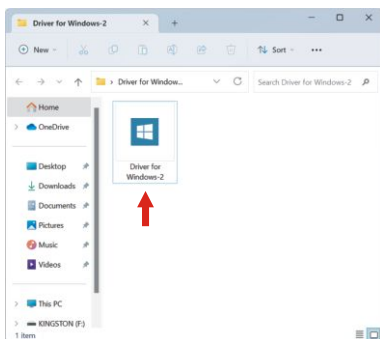


Driver for Windows -2 (Custom Installation)

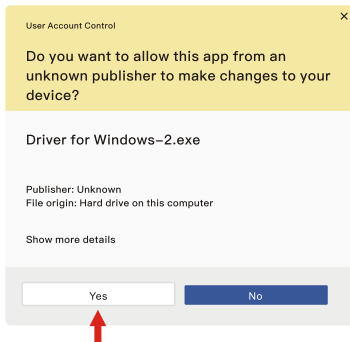


Note: Close the security software before installation

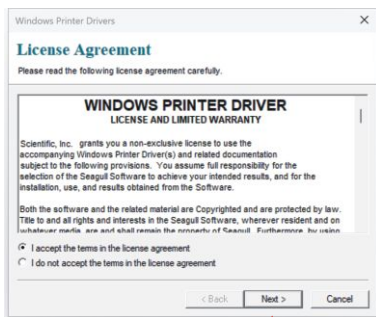
1. Double click on Driver



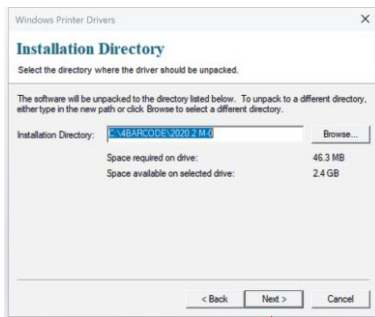
2. Click on “Yes”



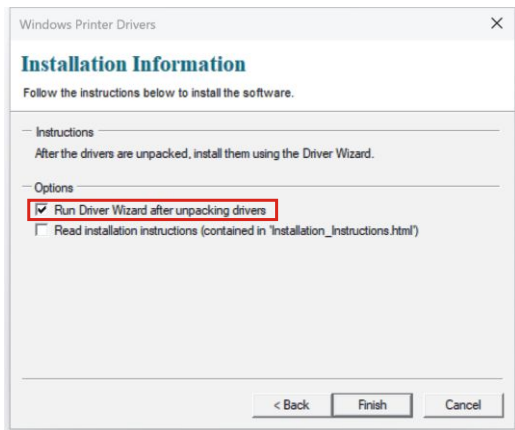
3. Click on “Next”



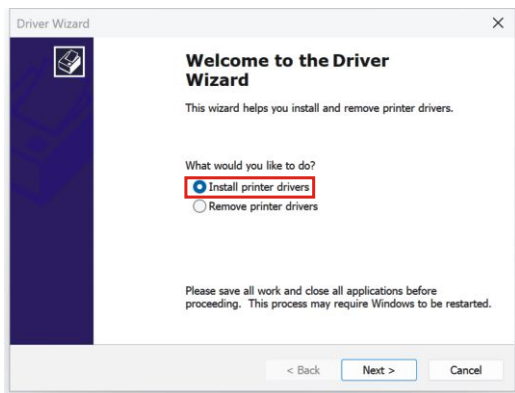
4. Click on “Next”



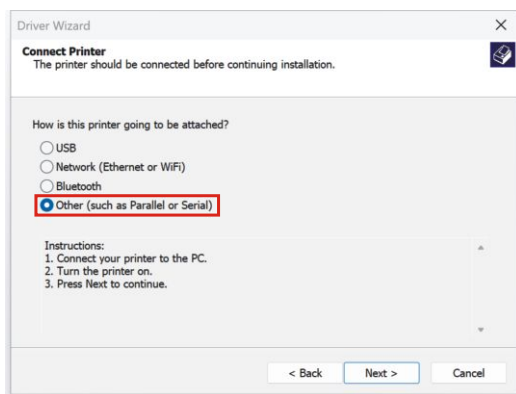
5. Click on “Finish”



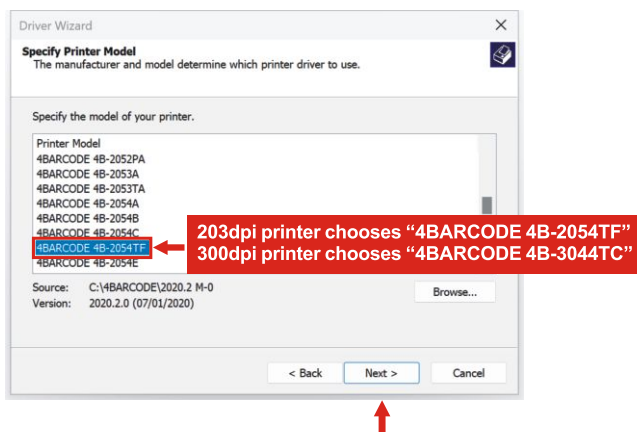
6. Click on “Next”



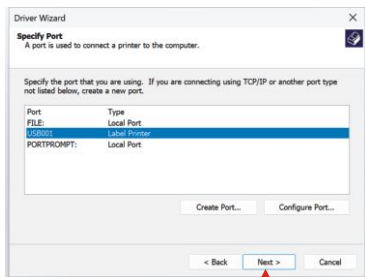
7. Choose “Other (such as Parallel or Serial)” and click on “Next”



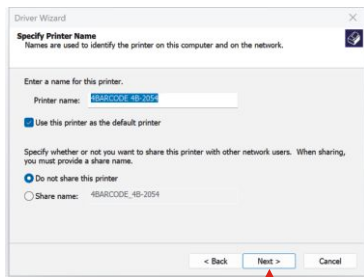
8. Choose “4BARCODE” and click on “Next”



9. Choose “USB...” and click on “Next”



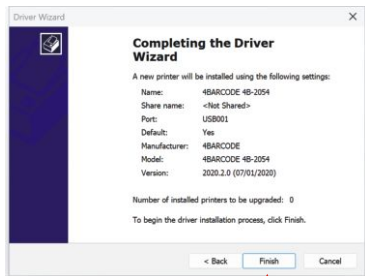
10. Click on “Next”



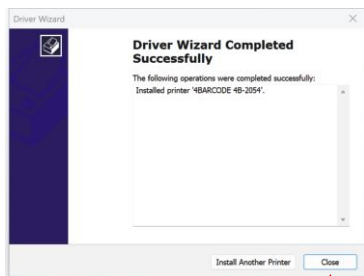
For Win 11, choose "USB... Label Printer..."

For Win 7/ Win10, choose the biggest digit USB port

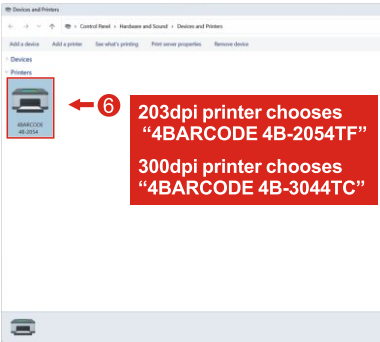
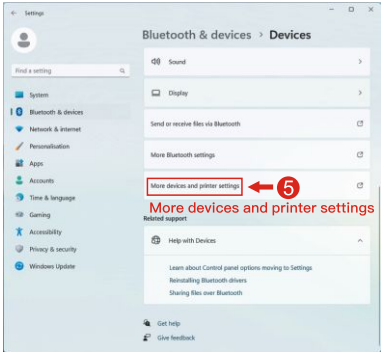
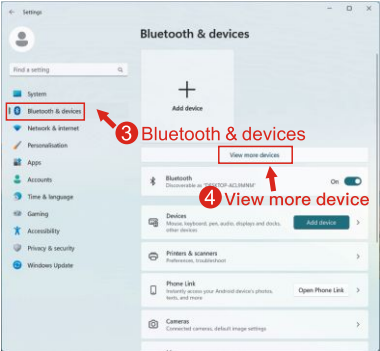
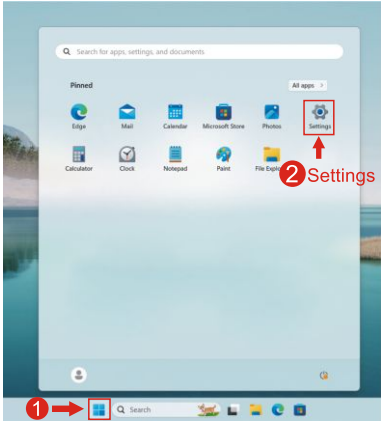
11. Click on “Finish”



12. Click on “Close”



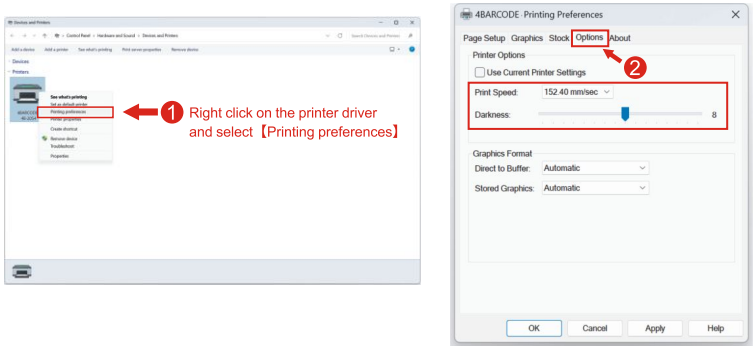
13. Steps for how to find the installed printer in Windows 11 PC.



Printer Setting

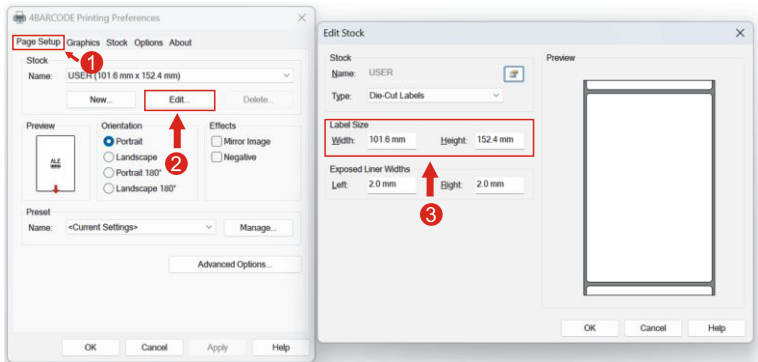
How to make the print sharper and darker?

1. By default, your printer is set to print at its fastest. Slowing this speed will result in a higher resolution.
2. Increasing the number for your density / darkness will result in a darker print. Setting the density too high will result in unwanted dark lines and/or label getting too hot and sticking mid-way to the printer head. Decreasing this number results in a lighter print.
3. Besides, to clean the print head and rubber platen roller softly with industrial alcohol-sprayed wet cloth also helps to improve the print quality.
4. If the print head is broken or the rubber platen roller worn-out, the print quality also looks not good. In this case, you are suggested to replace the print head or rubber roller.



How to set the paper?

You can choose a default size from the list or edit a custom size.

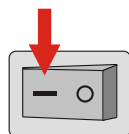




Driver for macOS

Read below carefully before installing the driver

- 1.The printer is connected to the computer with USB cable properly.
- 2.The power cable is properly plugged and the printer switch button is ON.

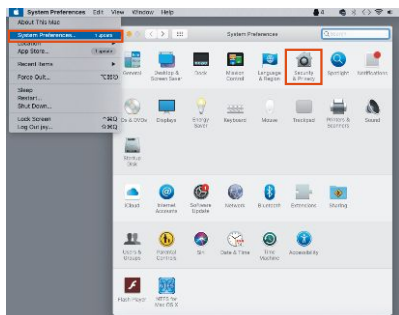
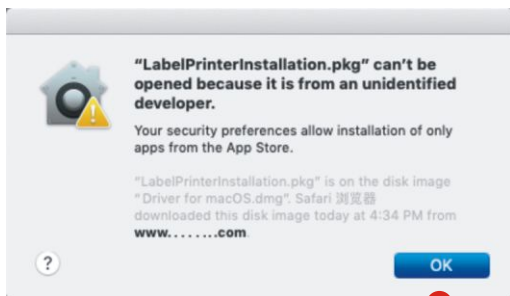


Driver for macOS

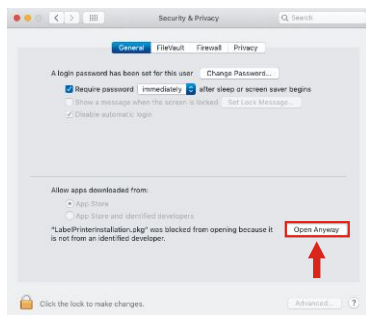
! Important tips :

As a default, macOS only permits softwares downloaded from App Store, so when it runs a software downloaded from elsewhere, it will pop out a warning page like below to stop the installation process.

Therefore, if you choose to download the driver from our official website, you will need to conduct some extra steps to ensure a successful driver installation in your macbook.



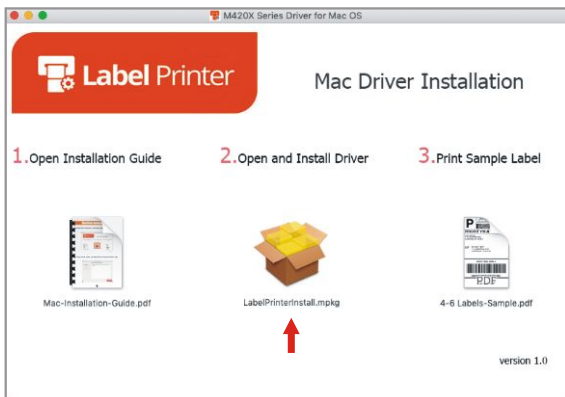
Click on "System Preferences" and click on "Security&Privacy".



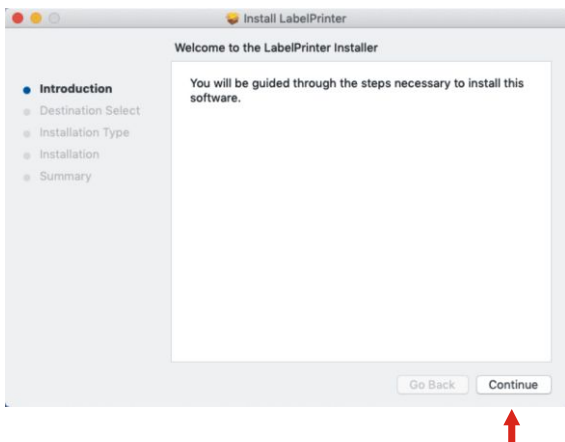
In "Security&Privacy", click on "Open Anyway".

Follow the below steps to finish the driver installation successfully.

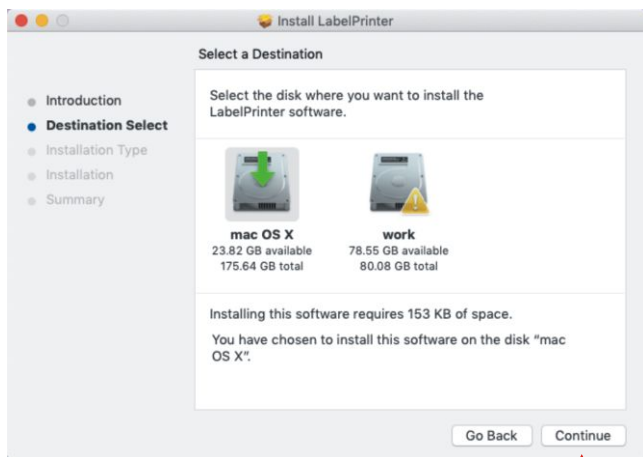
1. Please double click on the installer pkg to begin the installation.



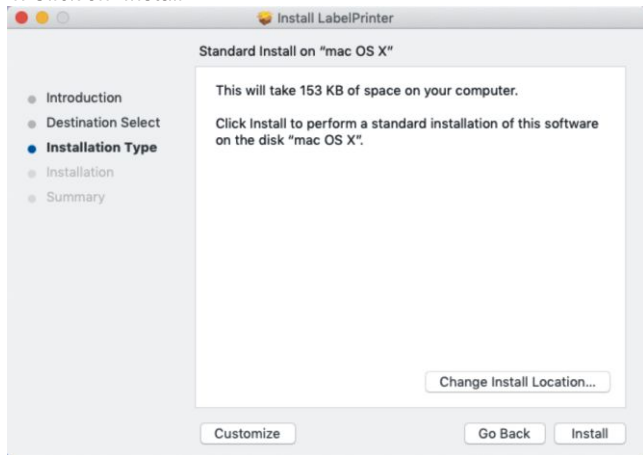
2. Click on "Continue" and proceed with the remaining installation steps.



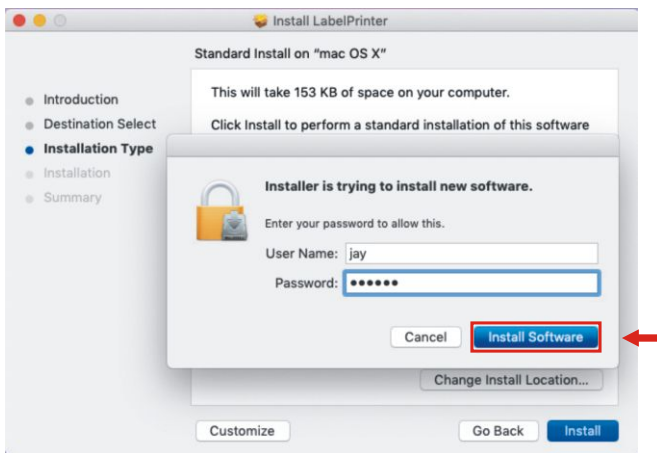
3. Click on “Continue”



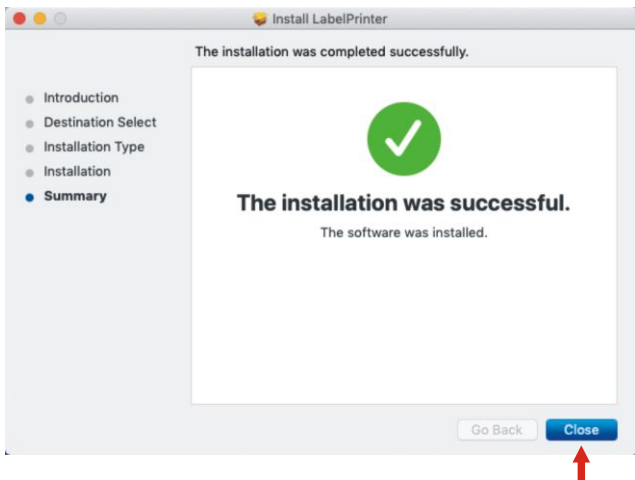
4. Click on “Install”



5. Click on “Install Software”



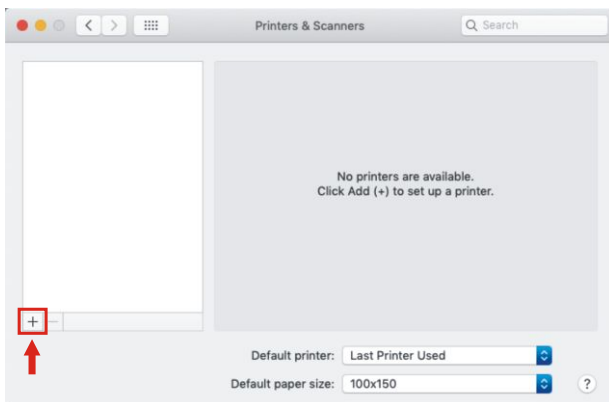
6. Click on “Close”



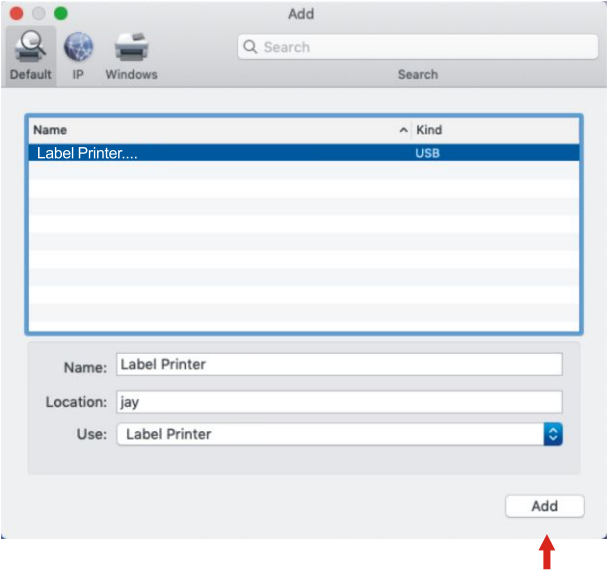
7. Click on “System Preferences” and click on “Printers &Scanners” .



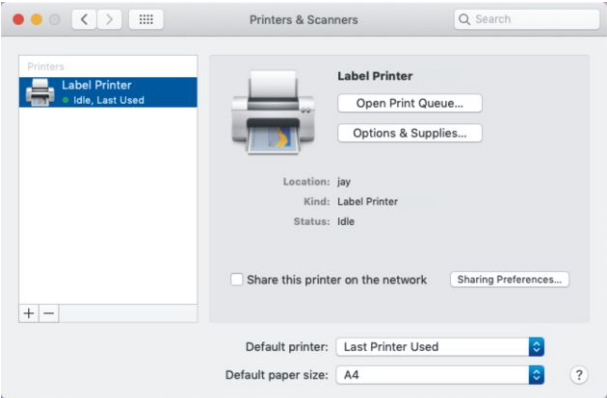
8. Click on “+”



9. Click on “Label Printer ...” and Click on “Add” .



10. After adding, the printer driver model will be in the list of “Printers &Scanners” with a green light on.



11. In the print dialogue, please be sure to select your “Paper Size” appropriately (for example 4x6).., Select “Printer Features”, then “Feature Sets”, select “Media Setting” in the drop down menu. You can set the “Method” and “Type”.

The screenshot shows a print dialog for a Priority Mail 2-Day label. On the left is a preview of the label with fields for address, tracking number, and a 'DO NOT SHIP' warning. On the right are the print settings. The 'Printer' is 'Label Printer "Model No."'. 'Presets' is 'Last Used Settings'. 'Copies' is 1. 'Pages' is 'All'. 'Paper Size' is '4x6inches(101.6mm x 15...' and is highlighted with a red box. 'Orientation' is 'Portrait'. 'Printer Features' is selected and highlighted with a red box. Under 'Feature Sets', 'Media Setting' is selected and highlighted with a red box. In the 'Media Setting' sub-dialog, 'Method' is 'Thermal Transfer' and 'Type' is 'Label with Gaps', both highlighted with red boxes. Other settings include 'GapsHeight: 0.118 in', 'Post-Print Action: Tear Off', 'Occurrence: After Every Page', 'Interval: 1', and 'Feedout: 0 mm'. At the bottom are buttons for '?', 'PDF', 'Hide Details', 'Cancel', and 'Print'.

12. Then select “Printer Options” in the drop down menu. You can set the “Print Speed” “Darkness”, click on “Print”.

This screenshot shows the same print dialog as above, but with 'Printer Options' selected under 'Feature Sets' and highlighted with a red box. The 'Media Setting' sub-dialog is no longer visible. Instead, the 'Printer Options' sub-dialog is shown, with 'Print Speed' set to '4.00 in/sec' and 'Darkness' set to '8', both highlighted with red boxes. 'Horizontal' and 'Vertical' settings are both '0 mm'. The 'Printer Features' dropdown remains highlighted with a red box. The bottom buttons are the same as in the previous screenshot.

13. Wanna print again, select the "Last Used Settings" at the "Presets" menu, click on "Print".

Label Preview:

P USPS TRACKING #

PRIORITY MAIL 2-DAY™ 99

John Smith
1234 BARNES RD
CARSON NY 10009

DO NOT SHIP

SHIP TO: 11 CAMPBELL AVE
CAMPBELL CA 95008

USPS TRACKING #

00 00000 000000 00000 00000 0

DO NOT SHIP

<< < 1 of 1 > >>

Printer Settings:

Printer: Label Printer "Model No."

Presets: **Last Used Settings**

Copies: 1

Pages: ☒ All
☐ From: 1 to: 1

Paper Size: 100x100 3.16 by 3.54 inches

Orientation:

Printer Features:

Feature Sets: Printer Options

Print Speed: 5.00 in/sec

Darkness: 8

Horizontal: 0 mm

Vertical: 0 mm

? PDF Hide Details Cancel Print

FCC WARNING

This device complies with part 15 of the FCC Rules. Operation is subject to the following two conditions: (1) this device may not cause harmful interference, and (2) this device must accept any interference received, including interference that may cause undesired operation.

Any changes or modifications not expressly approved by the party responsible for compliance could void the user's authority to operate the equipment.

NOTE: This equipment has been tested and found to comply with the limits for a Class B digital device, pursuant to Part 15 of the FCC Rules. These limits are designed to provide reasonable protection against harmful interference in a residential installation. This equipment generates, uses and can radiate radio frequency energy and, if not installed and used in accordance with the instructions, may cause harmful interference to radio communications.

However, there is no guarantee that interference will not occur in a particular installation. If this equipment does cause harmful interference to radio or television reception, which can be determined by turning the equipment off and on, the user is encouraged to try to correct the interference by one or more of the following measures:

- Reorient or relocate the receiving antenna.
 - Increase the separation between the equipment and receiver.
 - Connect the equipment into an outlet on a circuit different from that to which the receiver is connected.
 - Consult the dealer or an experienced radio/TV technician for help.
- To maintain compliance with FCC's RF Exposure guidelines, This equipment should be installed and operated with minimum 20cm distance between the radiator and your body: Use only the supplied antenna.



USER GUIDE

* Specifications, accessories, parts and programs are subject to the change without notice.