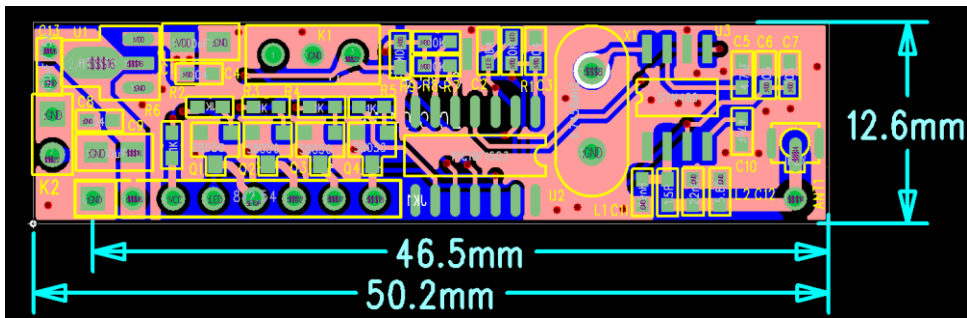


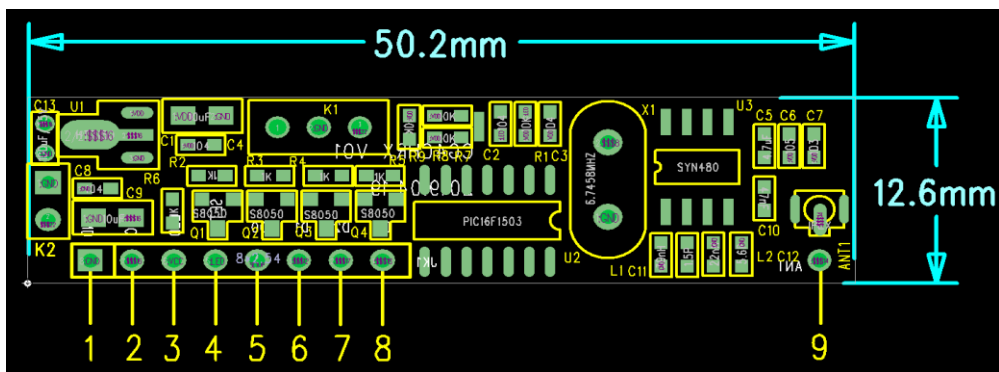
KL-CG4CHRX433 receiver's specification

1. Parameter

- 1) Operating voltageDC5V~DC15.5V
- 2) Electric current: 15mA
- 3) Operating frequency: 433.92MHZ
- 4) Receiving sensitivity: -107dBm
- 5) Modulation: FM（OOK）
- 6) Decoding type: rolling code（Single chip）
- 7) Temperature: -40~70℃
- 8) Dimension: 50.2*12.6*11mm



2. Pins and functions:



Pins	Functions
1 GND	Negative pole of power
2 VCC	Positive pole of power
3 LED	LED positive pole
4 SETUP	Pairing button
5 D0	Data output
6 D1	Data output
7 D2	Data output
8 D3	Data output
9 ANT	Antenna ipex

3. Pairing code

Press the pairing code key, learning indication light is on, press the any button on

transmitter, the indication light is off. Press the pairing code key again, learning indication light is on. Now press 2 times on any button of transmitter, the learning indication light flashes, pairing is done. It can maximum keep 20 emitters.

4. Repeat rolling code

When the receiver is power on, press the pairing code key until light is off. Release the button, delete pairing code is done.

FCC Caution:

This device complies with part 15 of the FCC Rules. Operation is subject to the following two conditions: (1) this device may not cause harmful interference, and (2) this device must accept any interference received, including interference that may cause undesired operation.

Any changes or modifications not expressly approved by the party responsible for compliance could void the user's authority to operate the equipment.

NOTE: This equipment has been tested and found to comply with the limits for a Class B digital device, pursuant to Part 15 of the FCC Rules. These limits are designed to provide reasonable protection against harmful interference in a residential installation. This equipment generates, uses and can radiate radio frequency energy and, if not installed and used in accordance with the instructions, may cause harmful interference to radio communications. However, there is no guarantee that interference will not occur in a particular installation.

If this equipment does cause harmful interference to radio or television reception, which can be determined by turning the equipment off and on, the user is encouraged to try to correct the interference by one or more of the following measures:

- Reorient or relocate the receiving antenna.
- Increase the separation between the equipment and receiver.
- Connect the equipment into an outlet on a circuit different from that to which the receiver is connected.
- Consult the dealer or an experienced radio/TV technician for help.

To maintain compliance with FCC's RF Exposure guidelines, This equipment should be installed and operated with minimum distance between 20cm the radiator your body: Use only the supplied antenna.