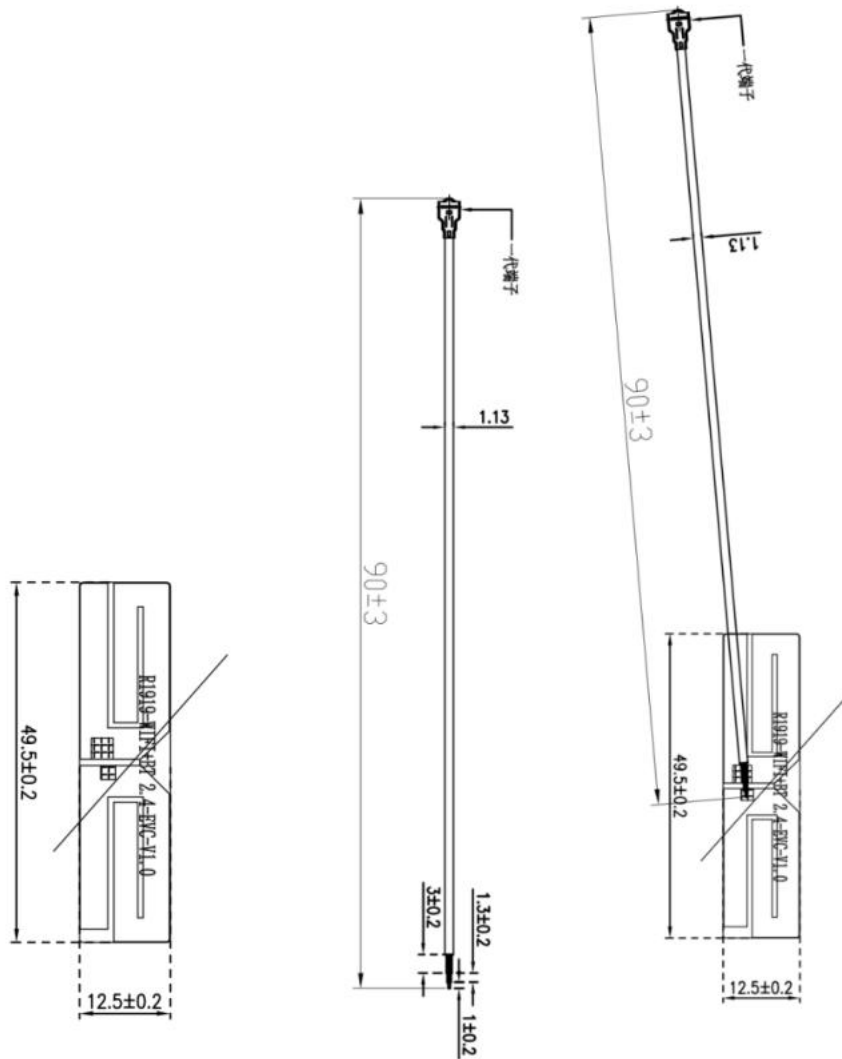


## 目录/Catalogue

序号 No.	项目 Item	页码 Page No.
1	图纸或实物图片 Drawing or Product Image	3-4
2	尺寸测量报告 Dimensions Test Report	5
3	射频性能测试报告 RF Performance Test Report	6-12

产品图纸或实物图片

Drawing or Product Image



## 样品尺寸测量报告

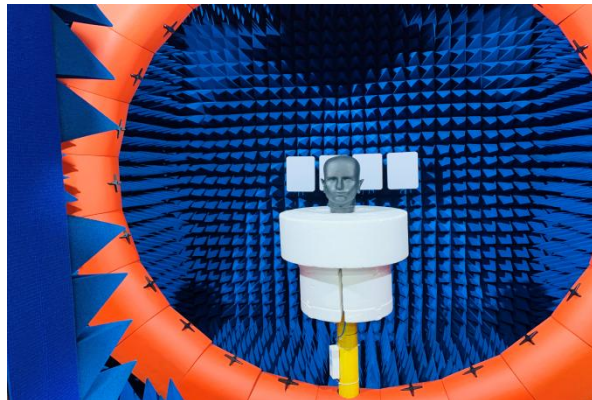
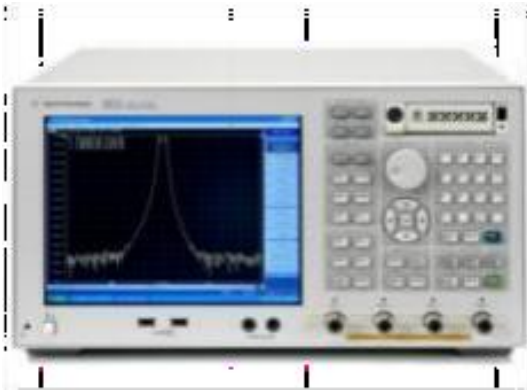
### Sample Dimensions Test Report

客户名称 Customer Name	FJ Dynamics Co., Ltd.	客户料号 Customer P/N		合立讯料号 Helixun P/N	HLX0014-R1919- WIFI+BT 2.4-EVC- V1.0
测试日期 Test Date	2022/11/16	样品数量 Sample Qty.	3	测试人 Inspector	Huang Yafei
尺寸编号 Dimension No.	标准 Standard	样品 1 Sample 1	样品 2 Sample 2	样品 3 Sample 3	Pass/NG
①long	$49.5\text{mm} \pm 0.2\text{m}$ m	49.6mm	49.4mm	49.5mm	Pass
②wide	$12.5\text{mm} \pm 0.2\text{m}$ m	12.6mm	12.6mm	12.5mm	Pass
③thick	$0.2\text{mm} \pm 0.05\text{m}$ m	0.20mm	0.21mm	0.21mm	Pass
④Line length	$90 \pm 3\text{mm}$	90mm	91mm	91mm	Pass
⑤					
⑥					
⑦					
最终结论 Conclusion					PASS
测试人&日期 Inspector & Date	Huang Yafei 2022/11/16		批准&日期 Approval & Date		

TEL: 0755-23591525 FAX: 0755-23591525

**TestSystem**

Sequence Number	Test Item	equipment
S parameter	VSWR	Agilent 5071C & Agilent 5062A
OTA Test	TRP&TIS	Agilent 8960 E5515C& Agilent 4438C&CMW500 ETS&SATIMO
		ETS&SATIMO
Gain & Efficiency	Gain & Efficiency	Agilent 5071C



## Product Overview & Dimension



## S11 Parameter-VSWR

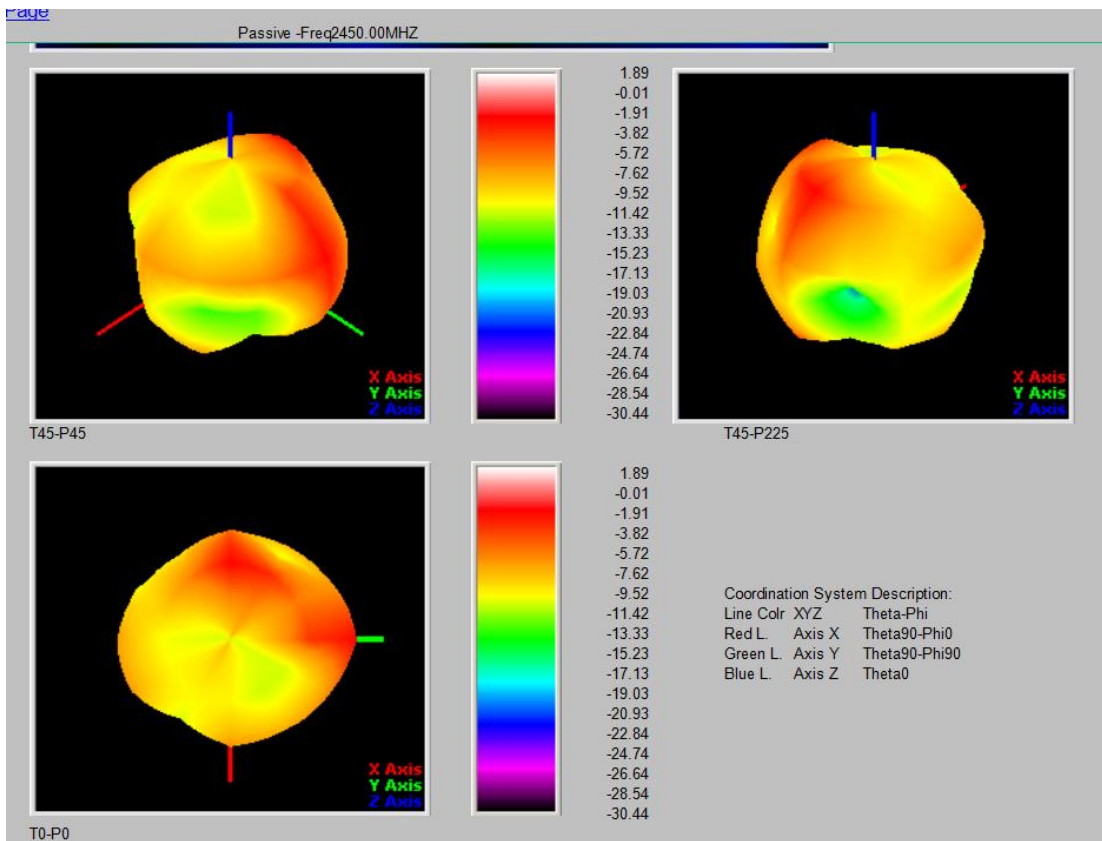
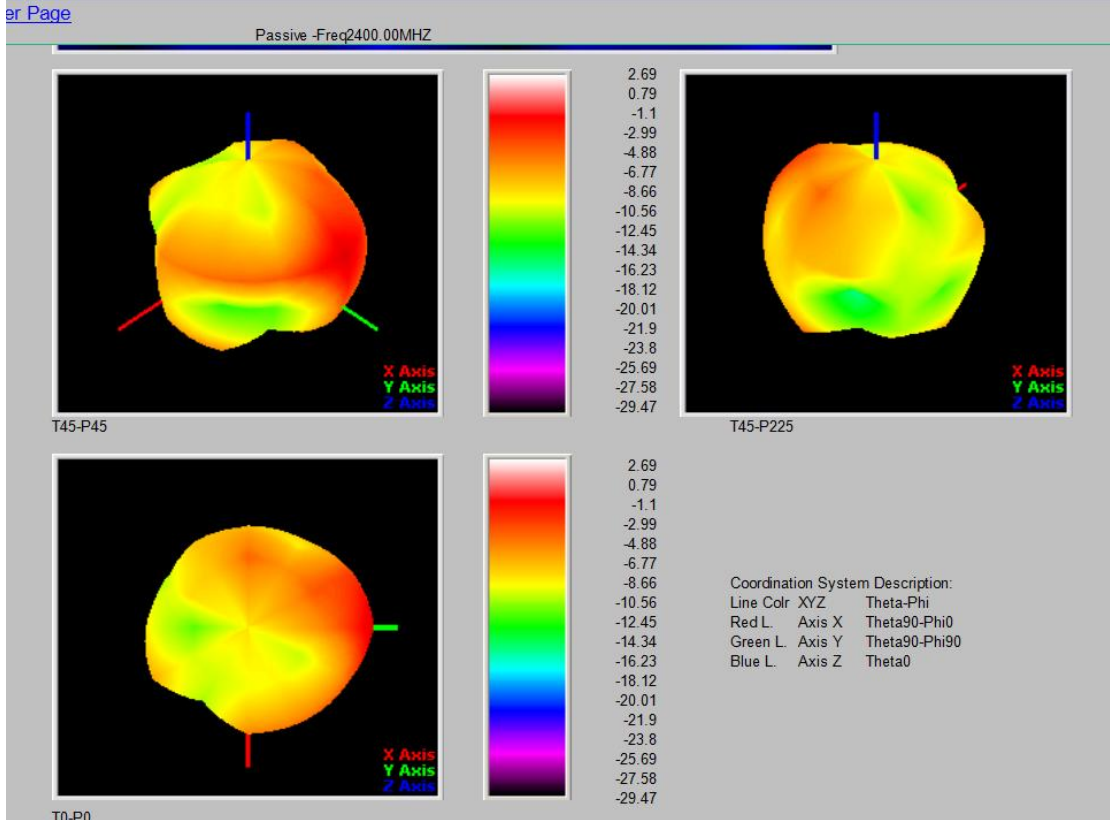


Frequency	2400	2450	2500	5150	5720	5850
VSWR	1.61	1.29	1.16	1.81	1.35	1.51

## Gain &amp; Efficiency——ANT

Frequency (MHz)	Efficiency (%)	Peak GAIN (dBi)
2400	63.8	2.69
2450	65.5	1.89
2500	68.23	2.31
5150	57	4.8
5700	60	3.5
5800	65	5.23

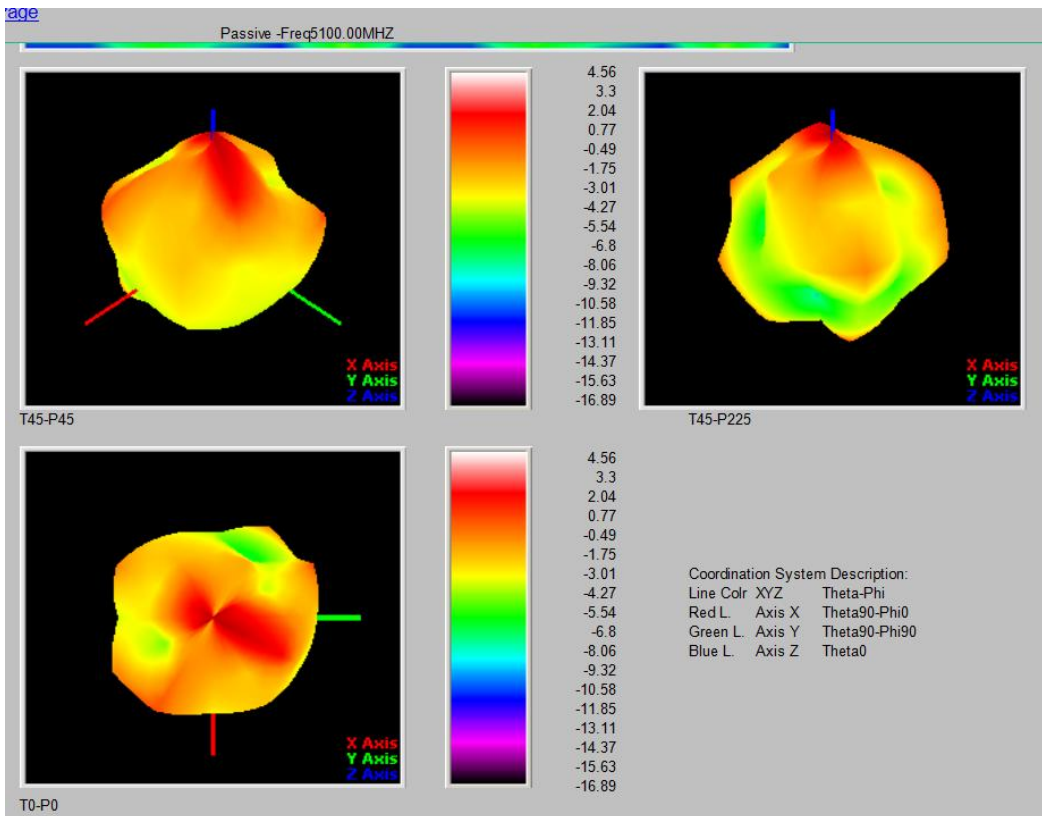
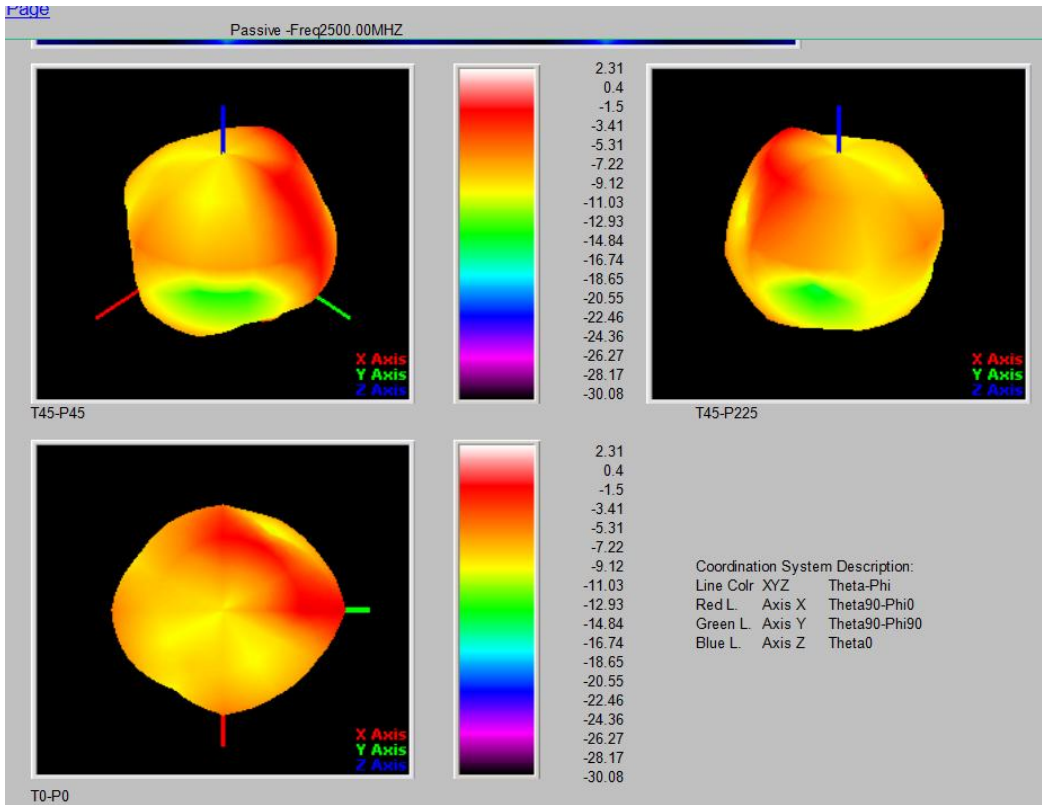
## 2D Pattern



TEL: 0755-23591525 FAX: 0755-23591525

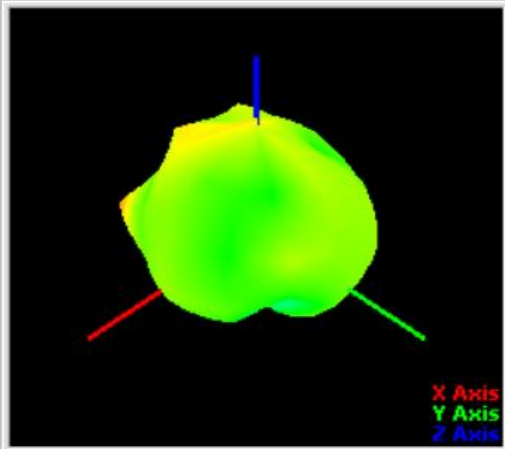


## 2D Pattern



TEL: 0755-23591525 FAX: 0755-23591525

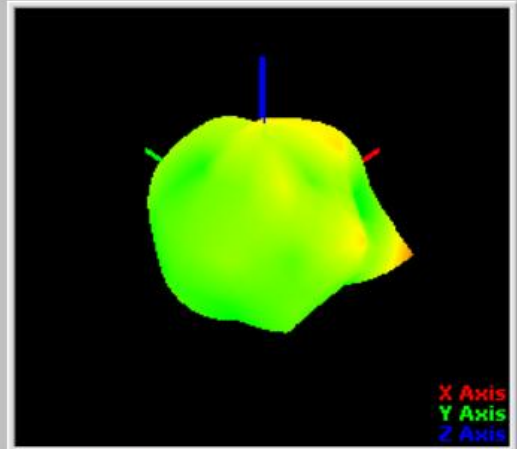
Passive -Freq5800.00MHZ



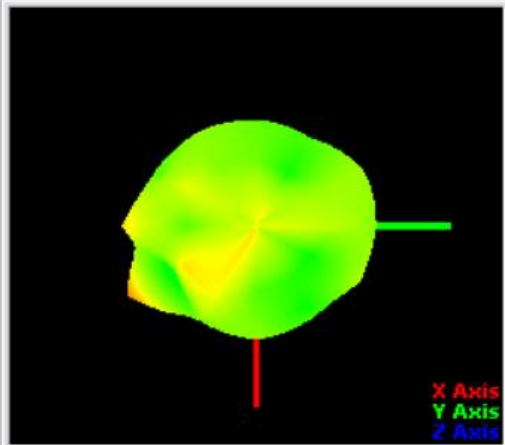
T45-P45



5.23  
3.91  
2.59  
1.27  
-0.05  
-1.36  
-2.68  
-4  
-5.32  
-6.64  
-7.96  
-9.28  
-10.6  
-11.92  
-13.24  
-14.56  
-15.88  
-17.2



T45-P225



T0-P0



5.23  
3.91  
2.59  
1.27  
-0.05  
-1.36  
-2.68  
-4  
-5.32  
-6.64  
-7.96  
-9.28  
-10.6  
-11.92  
-13.24  
-14.56  
-15.88  
-17.2

Coordination System Description:  
Line Colr XYZ Theta-Phi  
Red L. Axis X Theta90-Phi0  
Green L. Axis Y Theta90-Phi90  
Blue L. Axis Z Theta0