

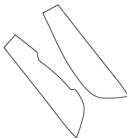
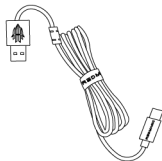
GS001J



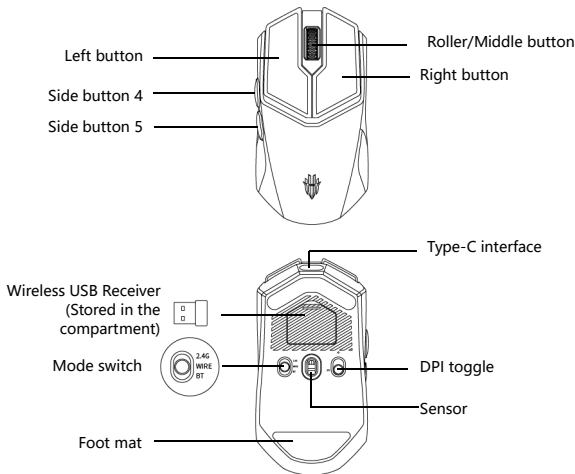
REDMAGIC

REDMAGIC GAMING MOUSE
USER GUIDE

Package Contents



Product Diagram



Installation and Operation

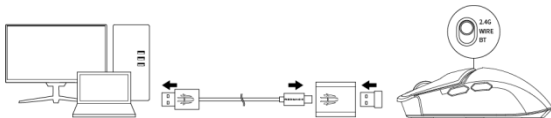
Wired Mode

- ① Toggle the mouse mode switch to WIRE mode
- ② Plug the Type-C cord into the mouse port
- ③ Connect USB cable to dedicated port in computer



Wireless 2.4G mode

- ① Toggle the mouse mode switch to 2.4G mode
- ② Insert the wireless USB receiver into the computer's USB interface

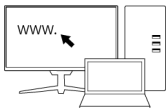


Bluetooth Mode

- ① Toggle the mouse mode switch to BT mode
- ② Press and hold the DPI toggle for 3s to start pairing
- ③ Perform the Bluetooth scan and pair the device

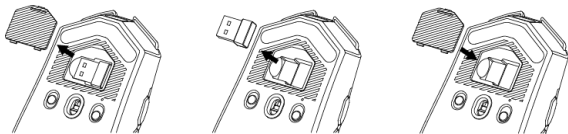


Driver Download



For more settings, visit <https://global.redmagic.gg/> to download drivers

Wireless USB Receiver compartment



FCC STATEMENT

This device complies with Part 15 of the FCC Rules. Operation is subject to the following two conditions:

(1) This device may not cause harmful interference, and

(2) This device must accept any interference received, including interference that may cause undesired operation.

2. Changes or modifications not expressly approved by the party responsible for compliance could void the user's authority to operate the equipment.

NOTE: This equipment has been tested and found to comply with the limits for a Class B digital device, pursuant to Part 15 of the FCC Rules. These limits are designed to provide reasonable protection against harmful interference in a residential installation.

This equipment has been tested and found to comply with the limits for a Class B digital device, pursuant to Part 15 of the FCC Rules. These limits are designed to provide reasonable protection against harmful interference in a residential installation. This equipment generates uses and can radiate radio frequency energy and, if not installed and used in accordance with the instructions, may cause harmful interference to radio communications. However, there is no guarantee that interference will not occur in a particular installation. If this equipment does cause harmful interference to radio or television reception, which can be determined by turning the equipment off and on, the user is encouraged to try to correct the interference by one or more of the following measures:

Reorient or relocate the receiving antenna.

Increase the separation between the equipment and receiver.

Connect the equipment into an outlet on a circuit different from that to which the receiver is connected.

Consult the dealer or an experienced technician for help.

FCC ID: 2A9QD-GS001J

RF warning statement:

The device has been evaluated to meet general RF exposure requirement. The device can be used in portable exposure condition without restriction.